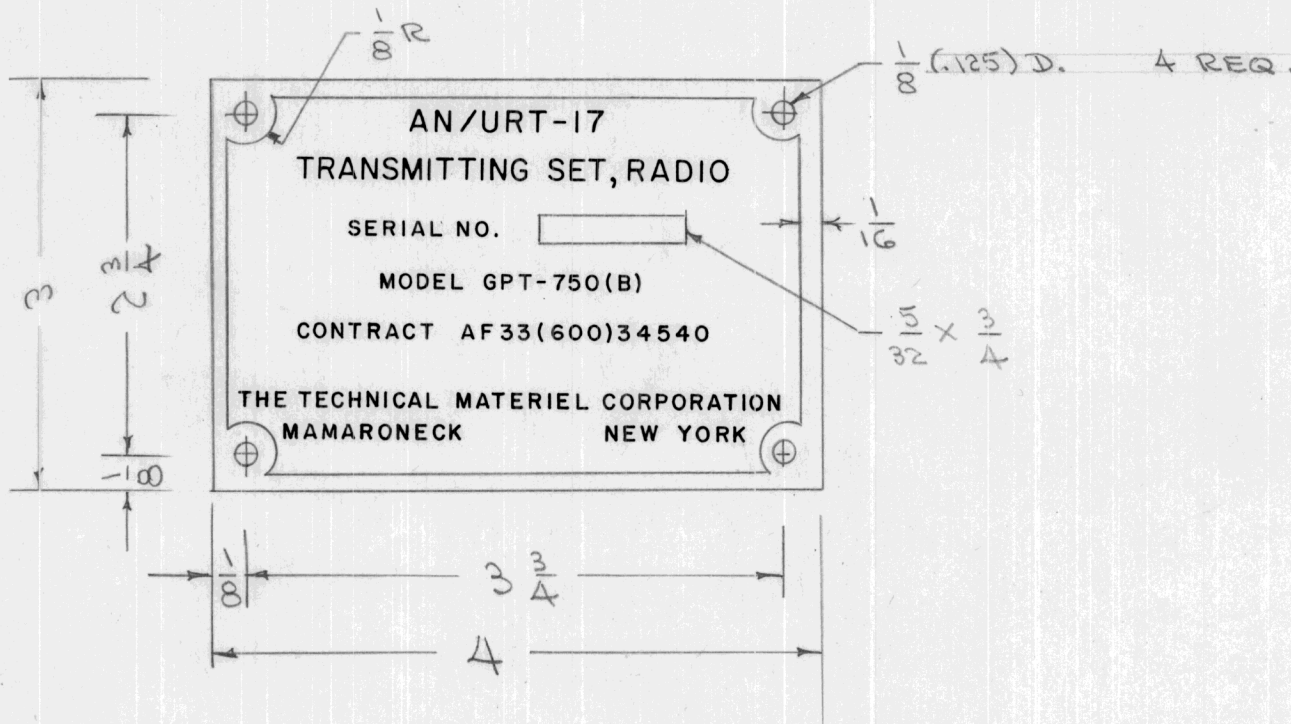


REQ. PER UNIT	USED ON			NP-206	A
	MODEL	ASS'Y. NO.	DATE		
1	GPT-750(B)		9-10-57		

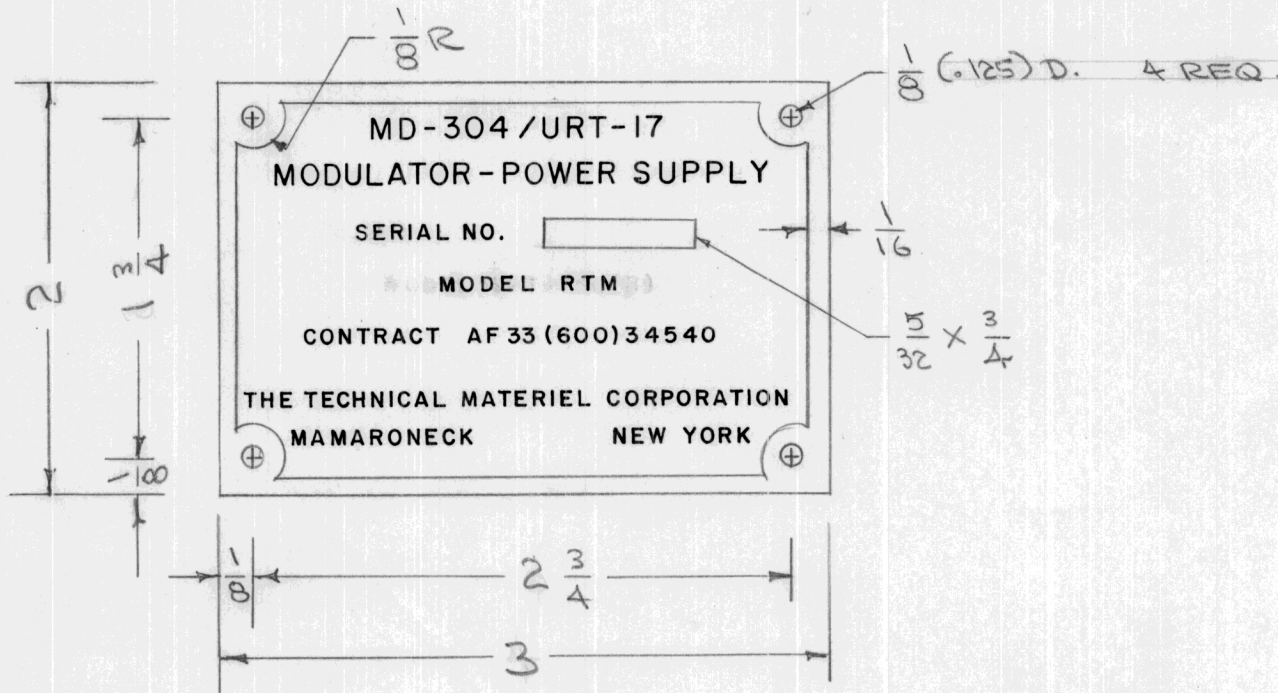


NOTE:
BLACK MATTE BACKGROUND
& CLEAR LACQUER.

NAMEPLATE TO BE MANUFACTURED IN
ACCORDANCE WITH MIL-STD-130

REQ.	ITEM	PART NO.	DESCRIPTION				SYMBOL
		.032	THE TECHNICAL MATERIEL CORP. MAMARONECK. NEW YORK				
		ALUMINUM	NAMEPLATE, IDENTIFICATION				
			AN/URT-17				
A	1	Finish Added	2457	1	Dr. Hilde	A.S.J.	
ISSUE	ITEM	CHANGED FROM	DATE	CH. NO.	DRAFTS	CHECKER	ENG. APP.
TOLERANCES			SCALE: NOT TO SCALE				
DEC. DIM. ±			MAXIMUM ALLOWABLE TOLERANCES HAVE BEEN DETERMINED AND ANY DEVIATIONS WILL BE CAUSE FOR REJECTION.				
FRAC. DIM. ±			REMOVE ALL BURRS AND SHARP EDGES				
ANGULAR DIM. ±							
TYPE & TEMPER		HEAT TREAT. SPEC.	DRAWN		CHECKED	FINAL APPROVAL	
SEE NOTE			Hilde		A.S.J.		
FINISH & SPEC. NO.		ELEC. DES. APP.	MECH. DES. APP.		NP-206 A		

REQ. PER UNIT	USED ON			NP-207	A
	MODEL	ASS'Y. NO.	DATE		
1	RTM		9-10-57		

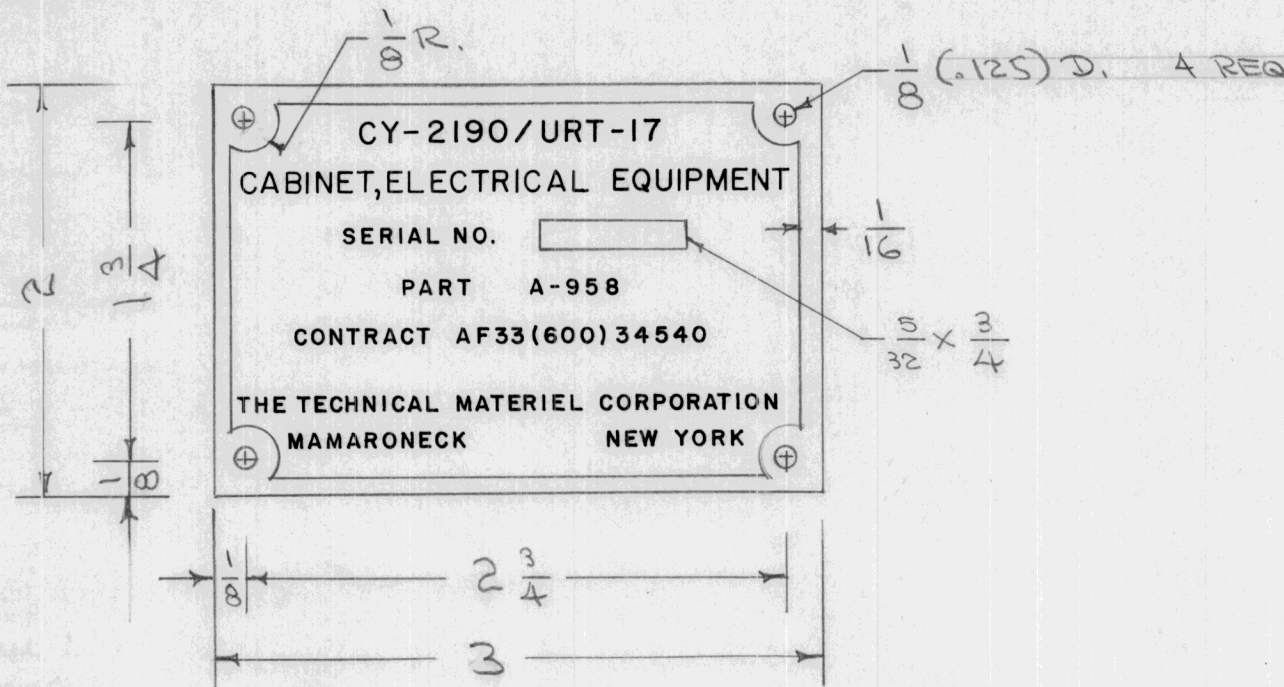


NOTE:
BLACK MATTE BACKGROUND
& CLEAR LACQUER.

NAMEPLATE TO BE MANUFACTURED IN ACCORDANCE WITH MIL-STD-130

ISSUE	ITEM	CHANGED FROM	DATE	CH. NO.	DRAFTS	CHECKER	ENG. APP.	REQ. ITEM	PART NO.	DESCRIPTION	SYMBOL		
									.032	THE TECHNICAL MATERIEL CORP. MAMARONECK, NEW YORK			
									STOCK SIZE				
									ALUMINUM		NAMEPLATE, IDENTIFICATION		
										MATERIAL	MD-304/URT17		
A	1	Finish Added	9/24/57	1	Sc.	HWD	ATJ		250	CDD.	HWD	ATJ	
TOLERANCES			SCALE: NOT TO SCALE										
DEC. DIM. ± FRAC. DIM. ± ANGULAR DIM. ±			MAXIMUM ALLOWABLE TOLERANCES HAVE BEEN DETERMINED AND ANY DEVIATIONS WILL BE CAUSE FOR REJECTION. REMOVE ALL BURRS AND SHARP EDGES										
									SEE NOTE				
									FINISH & SPEC. NO.		ELEC. DES. APP.	MECH. DES. APP.	NP-207 A

REQ. PER UNIT	USED ON			NP-208	A
	MODEL	ASS'Y. NO.	DATE		
1	A-958		9-10-57		

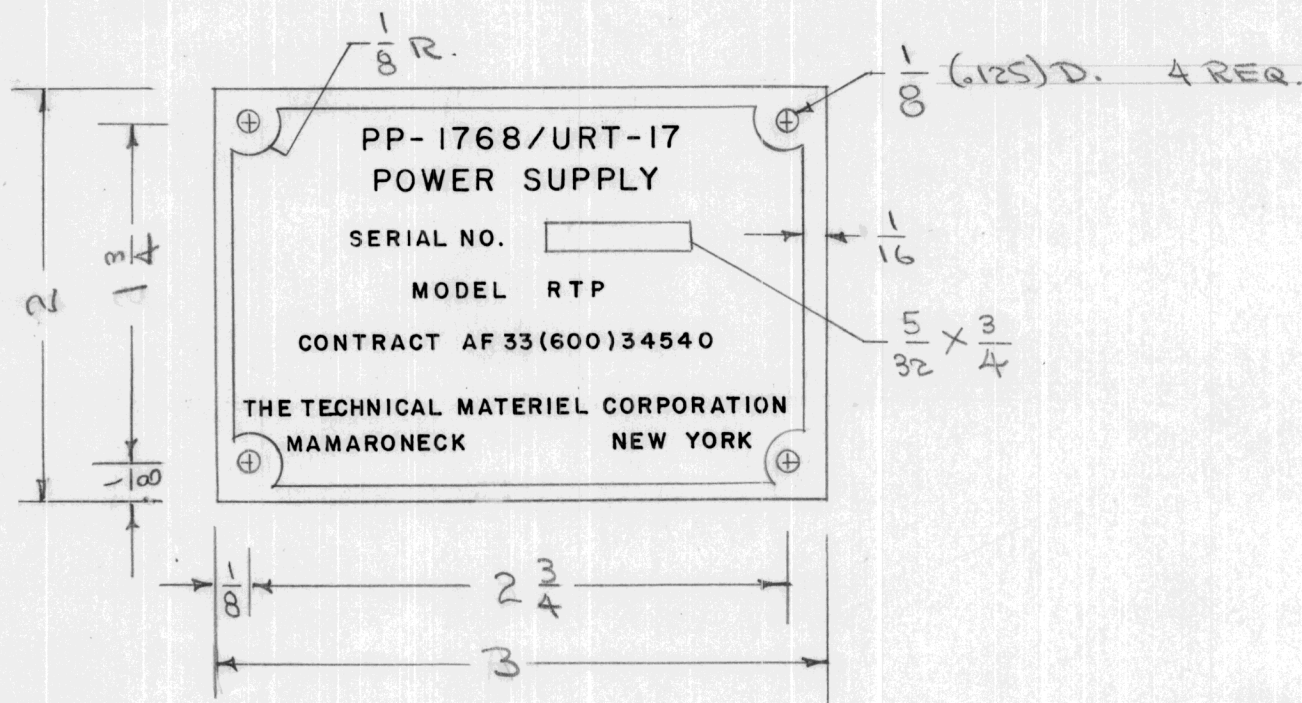


NOTE:
BLACK MATTE BACKGROUND
& CLEAR LACQUER

NAMEPLATE TO BE MANUFACTURED IN ACCORDANCE WITH MIL-STD-130

REQ. ITEM	PART NO.	DESCRIPTION	SYMBOL
	.032	THE TECHNICAL MATERIEL CORP. MAMARONECK. NEW YORK	
	STOCK SIZE	NAMEPLATE, IDENTIFICATION	
	ALUMINUM	CY-2190/URT-17	
	MATERIAL		
A	Finish Added	24 57	1
ISSUE	ITEM	CHANGED FROM	DATE
			CH. NO.
			DRAFTS
			CHECKER
			ENG. APP.
TOLERANCES		SCALE: NOT TO SCALE	
DEC. DIM. ±		MAXIMUM ALLOWABLE TOLERANCES HAVE BEEN DETERMINED AND ANY DEVIATIONS WILL BE CAUSE FOR REJECTION.	
FRAC. DIM. ±		REMOVE ALL BURRS AND SHARP EDGES	
ANGULAR DIM. ±			
250	HEAT TREAT. SPEC.	DRAWN	CHECKED
SEE NOTE			
FINISH & SPEC. NO.	ELEC. DES. APP.	MECH. DES. APP.	
			NP-208
			A

REQ. PER UNIT	USED ON			NP-209	A
	MODEL	ASS'Y. NO.	DATE		
1	RTP		9-10-57		

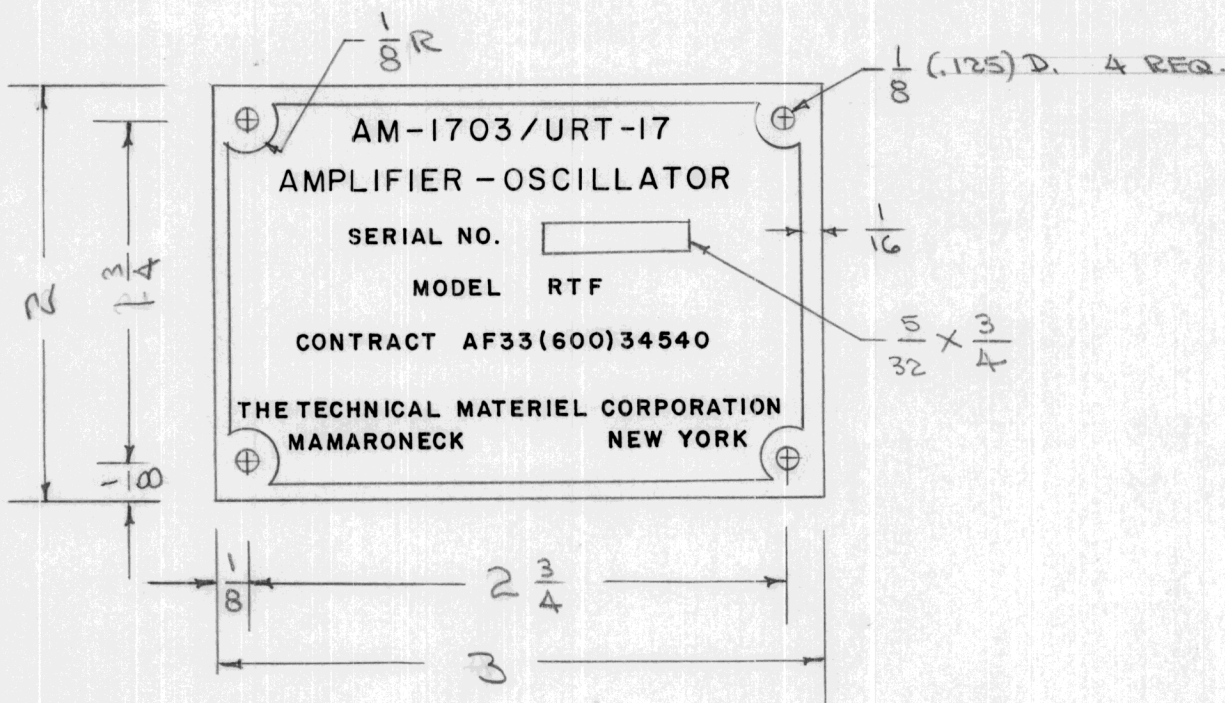


NOTE:
BLACK MATTE BACKGROUND
& CLEAR LACQUER

NAMEPLATE TO BE MANUFACTURED IN
ACCORDANCE WITH MIL-STD-130

REQ. ITEM	PART NO.	DESCRIPTION	SYMBOL
	032	THE TECHNICAL MATERIEL CORP. MAMARONECK. NEW YORK	
	STOCK SIZE		
	ALUMINUM	NAMEPLATE, IDENTIFICATION PP-1768/URT-17	
	MATERIAL		
	250	TH	CDD
	TYPE & TEMPER	HEAT TREAT. SPEC.	DRAWN
	SEE NOTE		CHECKED
	FINISH & SPEC. NO.	ELEC. DES. APP.	MECH. DES. APP.
			NP-209
			A

REQ. PER UNIT	USED ON			NP-210	A
	MODEL	ASS'Y. NO.	DATE		
1	RTF		9-10-57		

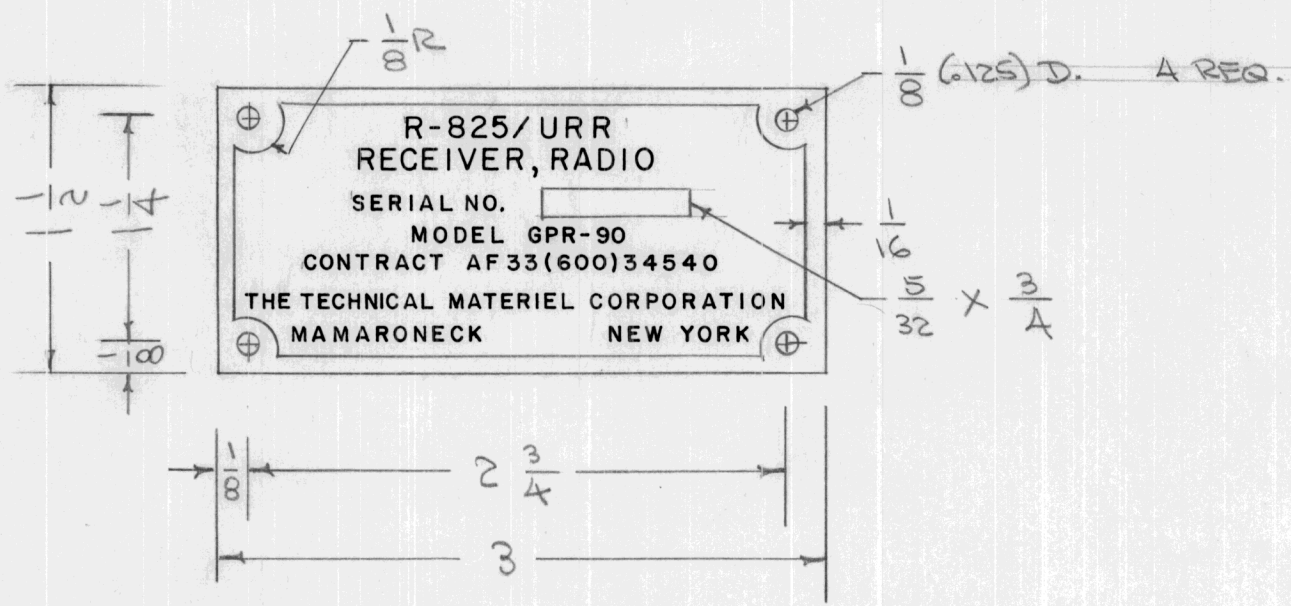


NOTE:
BLACK MATTE BACKGROUND
& CLEAR LACQUER.

NAMEPLATE TO BE MANUFACTURED IN
ACCORDANCE WITH MIL-STD-130

REQ.	ITEM	PART NO.	DESCRIPTION				SYMBOL
		.032	THE TECHNICAL MATERIEL CORP. MAMARONECK, NEW YORK				
		STOCK SIZE	NAMEPLATE, IDENTIFICATION				
		ALUMINUM	AM-1703/URT-17				
		MATERIAL					
A	1	Finish Added	9/24/57	1	ec.	J.M.D. A.J.J.	
ISSUE	ITEM	CHANGED FROM	DATE	CH. NO.	DRAFTS	CHECKER	ENG. APP.
TOLERANCES			SCALE: NOT TO SCALE				
DEC. DIM. ±			MAXIMUM ALLOWABLE TOLERANCES HAVE BEEN DETERMINED AND ANY DEVIATIONS WILL BE CAUSE FOR REJECTION. REMOVE ALL BURRS AND SHARP EDGES				
FRAC. DIM. ±							
ANGULAR DIM. ±							
TYPE & TEMPER		HEAT TREAT. SPEC.	DRAWN		CHECKED	FINAL APPROVAL	
SEE NOTE						NP-210 A	
FINISH & SPEC. NO.			ELEC. DES. APP.		MECH. DES. APP.		

REQ. PER UNIT	USED ON			NP-211	A
	MODEL	ASS'Y. NO.	DATE		
1	GPR-90		9-10-57		



NOTE:
BLACK MATTE BACKGROUND
& CLEAR LACQUER.

NAMEPLATE TO BE MANUFACTURED IN ACCORDANCE WITH MIL-STD-130

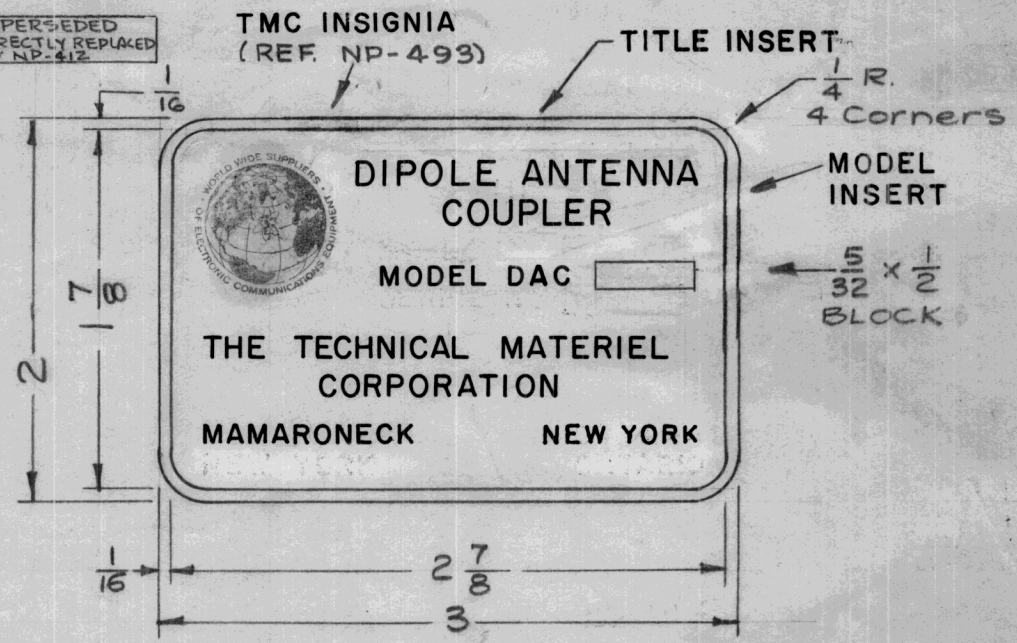
ISSUE	ITEM	CHANGED FROM	DATE	CH. NO.	DRAFTS	CHECKER	ENG. APP.	REQ. ITEM	PART NO.	DESCRIPTION	SYMBOL		
									.032	THE TECHNICAL MATERIEL CORP. MAMARONECK, NEW YORK			
									STOCK SIZE				
A	1	Finish Added	9/24/57	1	50	H. J. J.	A. J. J.		ALUMINUM	NAMEPLATE, IDENTIFICATION			
									MATERIAL	R-825/URR			
TOLERANCES			SCALE: NOT TO SCALE					250	*	CDD	H. J. J.	A. J. J.	
DEC. DIM. ± FRAC. DIM. ± ANGULAR DIM. ±			MAXIMUM ALLOWABLE TOLERANCES HAVE BEEN DETERMINED AND ANY DEVIATIONS WILL BE CAUSE FOR REJECTION. REMOVE ALL BURRS AND SHARP EDGES					TYPE & TEMPER	HEAT TREAT. SPEC.	DRAWN	CHECKED	FINAL APPROVAL	
								SEE NOTE					
								FINISH & SPEC. NO.		ELEC. DES. APP.	MECH. DES. APP.	NP-211	A

STANDARD DRAWING

TMC NO.	TITLE INSERT	MODEL INSERT
NP-222-1	DIPOLE ANTENNA COUPLER	DAC
NP-222-2	CASE, TRANSIT/OPERATING	TOC
NP-222-3	TRANSMITTING ANTENNA COUPLER	TRC
NP-222-4		
NP-222-5		
NP-222-6		
NP-222-7		
NP-222-8		
NP-222-9		
NP-222-10		

SUPERSEDED DIRECTLY REPLACED BY NP-412

REQ. PER UNIT	USED ON			NP-222	E
	MODEL	ASS'Y. NO.	DATE		



- NOTE:**
1. Aluminum Colored Gothic Lettering. (Approx. Size Shown)
 2. Background To Be Black W/Aluminum Border.
 3. To Be Supplied W/#583 Adhesive Backing.

- NOTE:**
1. This Nameplate Will Be Mounted on an Epoxy Resin Covered Case, Which Will Be Mounted Outdoors.

Ref: In Acc/with MIL-P-19834

E	1	LOCATION OTTAWA ONTARIO DELETED	2-5-81	21863	GDL		
D	1	NP-222-3, DIRECTLY REPLACED BY NP-412	2-21-63	8270			
C	1	NEW TMC INSIGNIA ADDED	8/7/62	7046	MJT		
B	1	NP-222-3 Added (TRC)	10/11/61	5702	LG		
A	1	NP-222-2 Added (TOC)	8/5/58	1	16		
ISSUE	ITEM	CHANGED FROM	DATE	CH. NO.	DRAFTS	CHECKER	ENG. APP.
TOLERANCES			SCALE: $\frac{1}{16}$				
DEC. DIM. \pm FRAC. DIM. \pm ANGULAR DIM. \pm			MAXIMUM ALLOWABLE TOLERANCES HAVE BEEN DETERMINED AND ANY DEVIATIONS WILL BE CAUSE FOR REJECTION. REMOVE ALL BURRS AND SHARP EDGES				

REQ. ITEM	PART NO.	DESCRIPTION	SYMBOL
		THE TECHNICAL MATERIEL CORP. MAMARONECK, NEW YORK	
	.003 to .005	STOCK SIZE	
	Aluminum Foil	NAMEPLATE, IDENTIFICATION, ADHESIVE	
	Anodized	LG 4/15/58	
TYPE & TEMPER	HEAT TREAT. SPEC.	DRAWN	CHECKED
See Note			
FINISH & SPEC. NO.	ELEC. DES. APP.	MECH. DES. APP.	
			NP-222
			E

REQ. PER UNIT	USED ON		
	MODEL	ASS'Y. NO.	DATE
1	SW-206		
1	SW-195		
1	SW-196		
1	SW-210		
1	SW-211		
1	JB-103		
1	JB-102		
1	SW-224		

NP-224 E

TMC INSIGNIA (REF NP-493)



NOTE:

Black Matte Background Clear Anodized Lettering, Border and TMC Insignia. PRESSURE SENSITIVE ADHESIVE BACKING 3M PT. NO., Y-9164 OR EQUIV

APPLICATION: Painted Surface

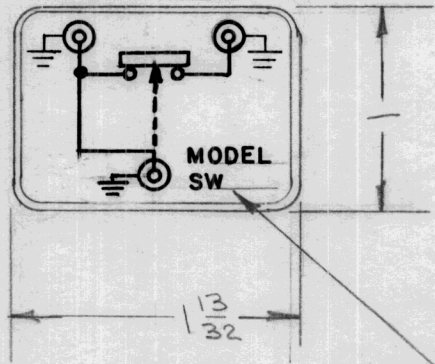
E		'PRESSURE SENSITIVE' NOTE ADDED	12/14/66	17477	WFO	CPB	2/23/67
D	1	NEW TMC INSIGNIA ADDED	8-7-62	7046	MJT	file	2/23/67
C	1	LETTERING RELOCATED	7-18-61	5280	G.D.L.	H.O.F.	2/23/67
B	1	ADDED JB-103	5/29/58		ARC	file	2/23/67
A	1	NOTE Clarified	5/19/58	1	MLO	file	2/23/67
ISSUE	ITEM	CHANGED FROM	DATE	CH. NO.	DRAFTS	CHECKER	ENG. APP.
TOLERANCES			SCALE: 1:2 (Do Not Scale).				
DEC. DIM. ± FRAC. DIM. ± ANGULAR DIM. ±			MAXIMUM ALLOWABLE TOLERANCES HAVE BEEN DETERMINED AND ANY DEVIATIONS WILL BE CAUSE FOR REJECTION. REMOVE ALL BURRS AND SHARP EDGES				

REQ.	ITEM	PART NO.	DESCRIPTION	SYMBOL
		.003 TO .005	THE TECHNICAL MATERIEL CORP. MAMARONECK, NEW YORK	
		STOCK SIZE		
		ALUMINUM FOIL	NAME PLATE	
		MATERIAL		
		TYPE & TEMPER	HEAT TREAT. SPEC.	DRAWN
		SEE NOTE		CHECKED
		FINISH & SPEC. NO.	ELEC. DES. APP.	MECH. DES. APP.
				NP-224 E

PART NO.	MODEL INSERT
NP-226-1	SW-195
-2	SW-196
-3	SW-282
-4	BLANK
-5	SW401
-6	SW211

REQ. PER UNIT	USED ON		
	MODEL	ASS'Y. NO.	DATE
1	SEE CHART	A-1433	5-8-58
1	SEE CHART	A-1498	5-8-58

NP-226 E



MODEL INSERT

NOTE:

All Lettering, Symbols and Border To Be Black.
 Background To Be Aluminum Clear Anodized.
 Adhesive Backing Water Solvent.

APPLICATION: Painted Surface

PRESSURE SENSITIVE ADHESIVE
 BACKING W/ ZIP OFF LINER

E	UPDATED & REV	2/18-69	19238	GE	JW	FB	Ref-CK-344
D	UPDATED & REV.	9-26-68	19050	H.S.	JW	EFM	
C	1 IT-5 ADDED	9/14/65	14775	L.K.	JCB	MM	
B	1 NP-226-3 & 4 ADDED	4-8-61	4617	MAF.	JCB	SK	
A	1 NOTE Clarified	5/19/58	1	MLO	JW	AW	

ISSUE	ITEM	CHANGED FROM	DATE	CH. NO.	DRAFTS	CHECKER	ENG. APP.
TOLERANCES			SCALE:				
DEC. DIM. ±			MAXIMUM ALLOWABLE TOLERANCES HAVE BEEN DETERMINED AND ANY DEVIATIONS WILL BE CAUSE FOR REJECTION. REMOVE ALL BURRS AND SHARP EDGES				
FRAC. DIM. ±							
ANGULAR DIM. ±							

REQ.	ITEM	PART NO.	DESCRIPTION	SYMBOL	
		.003 To .005	THE TECHNICAL MATERIEL CORP. MAMARONECK, NEW YORK	SCHEMATIC DIAGRAM	
		STOCK SIZE			
		ALUMINUM FOIL			
MATERIAL					
TYPE & TEMPER		HEAT TREAT. SPEC.	DRAWN	CHECKED	FINAL APPROVAL
SEE NOTE					
FINISH & SPEC. NO.			ELEC. DES. APP.	MECH. DES. APP.	

NP-226 E

REQ. PER UNIT	USED ON			NP-228	C
	MODEL	ASS'Y. NO.	DATE		
2	TOC		6-6-58		

NOTE -

ALL LETTERING AND BORDER
TO BE BLACK.

BACKGROUND TO BE ALUMINUM
CLEAR ANODIZED.

APPLICATION - TO PLASTIC RESIN

PRESSURE SENSITIVE ADHESIVE BACKING

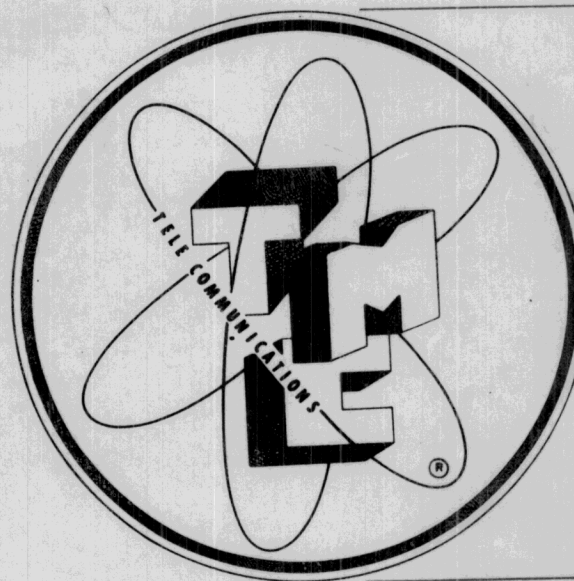
3M P/N, Y-9164 OR EQUIVALENT

TERMINOLOGY SHALL BE AS SHOWN

NP-228-2

DWG NO

DIAMETER
(INCHES)

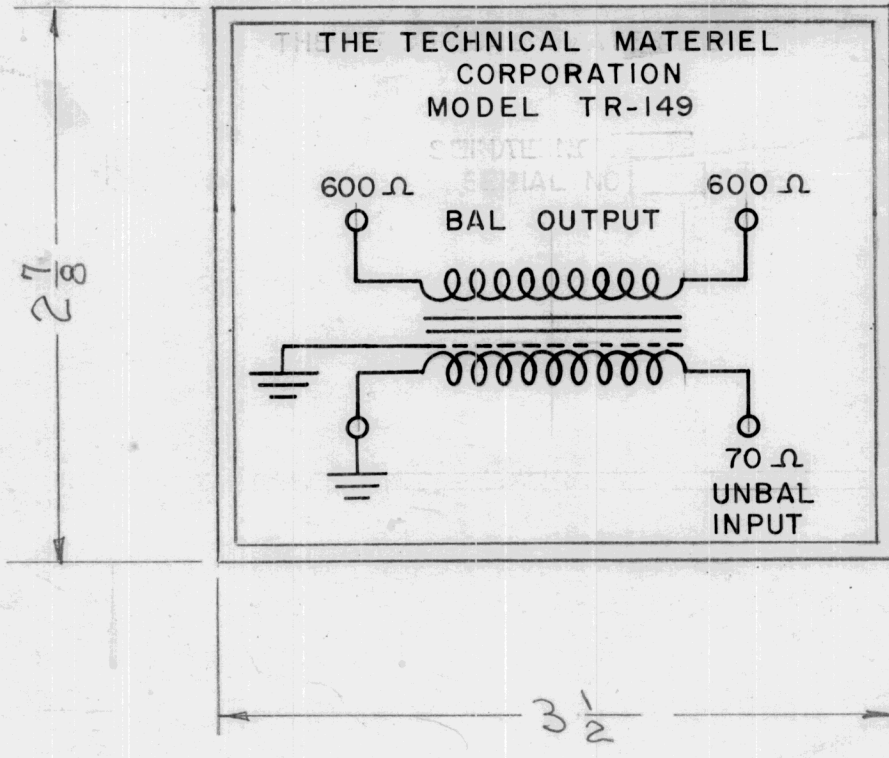


DIA.

Ref - In Acc. / with MIL-P-19834

ISSUE	ITEM	CHANGED FROM	DATE	CH. NO.	DRAFTS	CHECKER	ENG. APP.	REQ. ITEM	PART NO.	DESCRIPTION	SYMBOL	
C		"PRESSURE SENSITIVE BACKING" NOTE ADDED	12.14.66	17477	4/10	JCB		.003 To .005		THE TECHNICAL MATERIEL CORP. MAMARONECK. NEW YORK		
B	1	Adhesive Backing Note Added	6/5/58	2	16			STOCK SIZE		TMC INSIGNIA, CIRCULAR		
A	1	PART NO CLARIFIED	7/21/58	1	file			ALUMINUM FOIL				
TOLERANCES								SCALE:				
DEC. DIM. ± FRAC. DIM. ± ANGULAR DIM. ±								MAXIMUM ALLOWABLE TOLERANCES HAVE BEEN DETERMINED AND ANY DEVIATIONS WILL BE CAUSE FOR REJECTION. REMOVE ALL BURRS AND SHARP EDGES				
								TYPE & TEMPER	HEAT TREAT. SPEC.	DRAWN	CHECKED	FINAL APPROVAL
								SEE NOTE		6/6/58	JCB	JCB
								FINISH & SPEC. NO.	ELEC. DES. APP.	MECH. DES. APP.	NP-228	C

REQ. PER UNIT 1	USED ON			NP-229	A
	MODEL TR-149	ASS'Y. NO.	DATE 6-13-58		



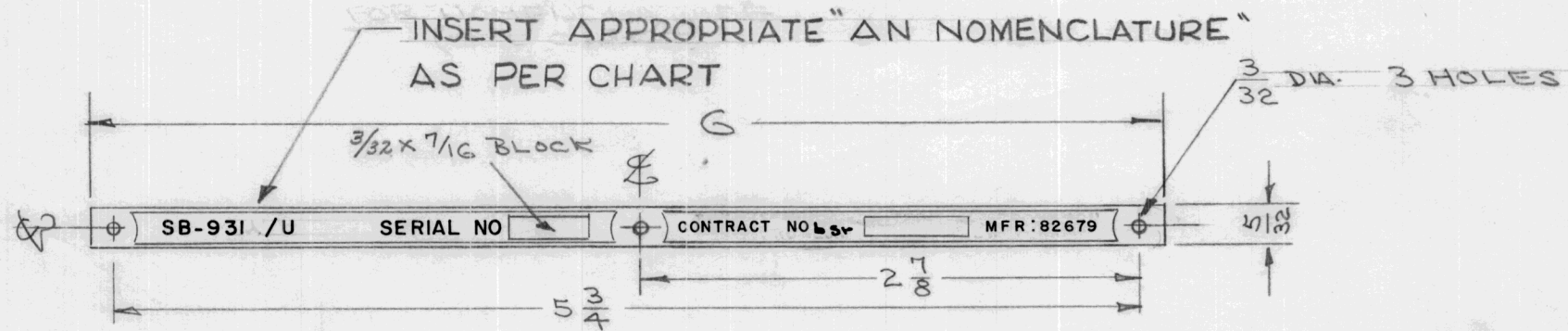
NOTE: All Lettering, Symbols, & Border to be black.
 Background to be Aluminum Clear Anodized.
 Adhesive Backing. Water Solvent.

APPLICATION:
 Painted Surface.

ISSUE	ITEM	CHANGED FROM	DATE	CH. NO.	DRAFTS	CHECKER	ENG. APP.	REQ. ITEM	PART NO.	DESCRIPTION	SYMBOL	
								.003 to .005		THE TECHNICAL MATERIEL CORP. MAMARONECK. NEW YORK		
								STOCK SIZE		NAMEPLATE IDENTIFICATION		
A	1	SERIAL No. BLOCK REMOVED	6/14/58	1	awc		alm	Aluminum Foil				
								MATERIAL				
TOLERANCES				SCALE:								
DEC. DIM. ±				MAXIMUM ALLOWABLE TOLERANCES HAVE BEEN DETERMINED AND ANY DEVIATIONS WILL BE CAUSE FOR REJECTION.								
FRAC. DIM. ±				REMOVE ALL BURRS AND SHARP EDGES								
ANGULAR DIM. ±												
								TYPE & TEMPER	HEAT TREAT. SPEC.	DRAWN	CHECKED	FINAL APPROVAL
								See Note				
								FINISH & SPEC. NO.	ELEC. DES. APP.	MECH. DES. APP.		
											NP-229	A

TMC NO	AN NOMENCLATURE INSERT
NP-232 - 1	SB-931/U
NP-232 - 2	SB-932/U

REQ. PER UNIT	USED ON			NP-232	C
	MODEL	ASS'Y. NO.	DATE		



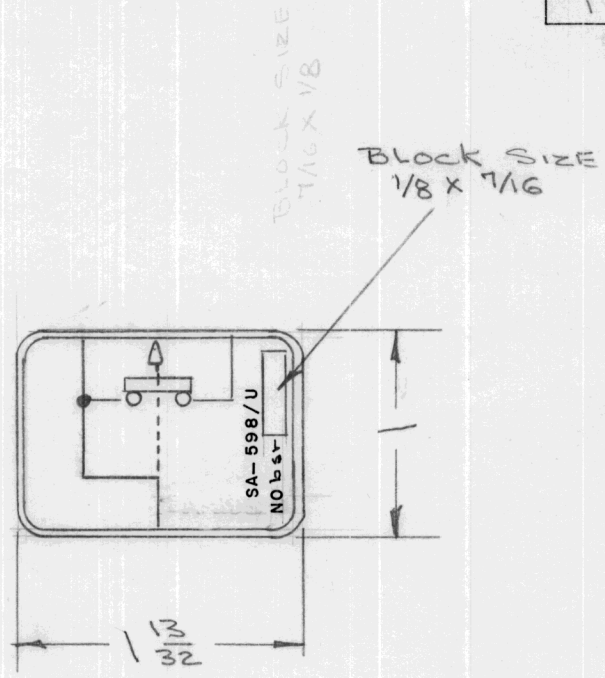
NAVY NO TMC NO.
 SB-931/U QDP-411
 SB-932/U SPP-3

FINISH NOTE:
 REVERSE ETCH, ANODIZED ON
 LUSTERLESS BLACK BACKGROUND.
 (FED SPEC. TT-C-595) 3727

Name Plate To Be In Accordance with
 MIL-P-150248 (SHIPS) & AMEND. - TYPE A

REQ. ITEM	PART NO.	DESCRIPTION	SYMBOL									
C 1	Insert note added & SB-93 changed to SB-931	3-16-61	4439	RU	JCB	CFM	.032 THK	THE TECHNICAL MATERIEL CORP. MAMARONECK, NEW YORK				
B 1	DIY. CHG.: 3/32 WAS 1/8	8/20/58	—	MC	JCB	AM	STOCK SIZE					
A 1	CONTRACT No. Added	8/4/58	1	JCB	JCB	AM	ALUMINUM	NAMEPLATE, IDENTIFICATION				
ISSUE	ITEM	CHANGED FROM	DATE	CH. NO.	DRAFTS	CHECKER	ENG. APP.	MATERIAL	SB-93 / U			
TOLERANCES				SCALE:				250				
DEC. DIM. ±				MAXIMUM ALLOWABLE TOLERANCES HAVE BEEN DETERMINED AND ANY DEVIATIONS WILL BE CAUSE FOR REJECTION.				TYPE & TEMPER	HEAT TREAT. SPEC.	DRAWN	CHECKED	FINAL APPROVAL
FRAC. DIM. ±				REMOVE ALL BURRS AND SHARP EDGES				SEE NOTE				
ANGULAR DIM. ±								FINISH & SPEC. NO.	ELEC. DES. APP.	MECH. DES. APP.	NP-232	C

REQ. PER UNIT	USED ON			NP-233
	MODEL	ASS'Y. NO.	DATE	
1	SW-195		6-18-53	

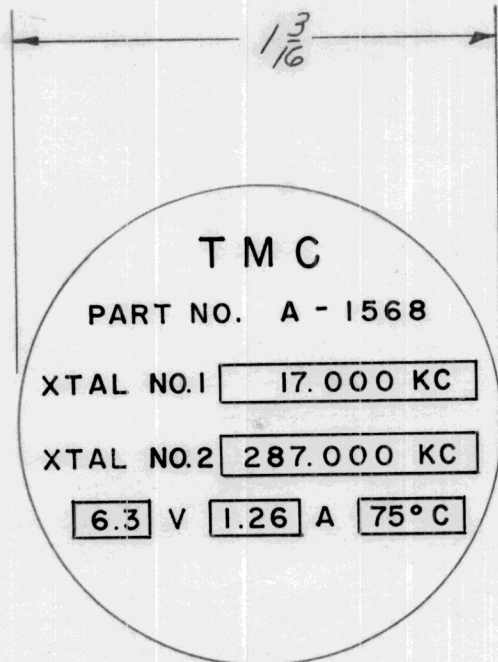


FINISH NOTE:
 REVERSE ETCH, ANODIZED ON THE
 LUSTERLESS BLACK BACKGROUND,
 (FED SPEC. TT-C-595) 3727,
 ADHESIVE BACKED ALUMINUM FOIL.
 APPLICATION: PAINTED SURFACE
 IN ACCORDANCE WITH MIL-P-19834 (SHIPS)
 OF 29 MAY 1957

Name Plate To Be In Accordance With
 MIL-P-150248B (SHIPS) & AMEND. TYPE A

REQ. ITEM	PART NO.	DESCRIPTION	SYMBOL
	.003 TO .005 STOCK SIZE	THE TECHNICAL MATERIEL CORP. MAMARONECK, NEW YORK	
A 1	ALUMINUM FOIL	NAME PLATE IDENTIFICATION SA-598/U	
ISSUE ITEM	CHANGED FROM	DATE	CH. NO. DRAFTS CHECKER ENG. APP.
TOLERANCES		SCALE: <i>H</i>	
DEC. DIM. ± FRAC. DIM. ± ANGULAR DIM. ±		MAXIMUM ALLOWABLE TOLERANCES HAVE BEEN DETERMINED AND ANY DEVIATIONS WILL BE CAUSE FOR REJECTION. REMOVE ALL BURRS AND SHARP EDGES	
TYPE & TEMPER		HEAT TREAT. SPEC.	DRAWN
SEE NOTE			CHECKED
FINISH & SPEC. NO.		ELEC. DES. APP.	MECH. DES. APP.
			NP-233 A

REQ. PER UNIT	USED ON			NP-236
	MODEL	ASS'Y. NO.	DATE	
1	SBE-2		8-19-58	



FINISH NOTE:
 REVERSE ETCH, ANODIZED ON
 LUSTERLESS BLACK BACKGROUND
 (FED. SPEC. TT-C-59.5) 3727
 ADHESIVE BACKED ALUMINUM FOIL
 IN ACCORDANCE WITH MIL-P-19834(SHIPS)
 OF 29 MAY 1957

SCALE: 2"=1"

ISSUE	ITEM	CHANGED FROM	DATE	CH. NO.	DRAFTS	CHECKER	ENG. APP.	REQ. ITEM	PART NO.	DESCRIPTION	SYMBOL	
								.003 To .005		THE TECHNICAL MATERIEL CORP. MAMARONECK, NEW YORK		
								STOCK SIZE			NAMEPLATE IDENTIFICATION	
								ALUMINUM FOIL			SBE-2	
									MATERIAL			
								CD	CD	osc.	JDe	ARB
								TYPE & TEMPER	HEAT TREAT. SPEC.	DRAWN	CHECKED	FINAL APPROVAL
								SEE NOTE		RWB	Am	NP-236
								FINISH & SPEC. NO.		ELEC. DES. APP.	MECH. DES. APP.	

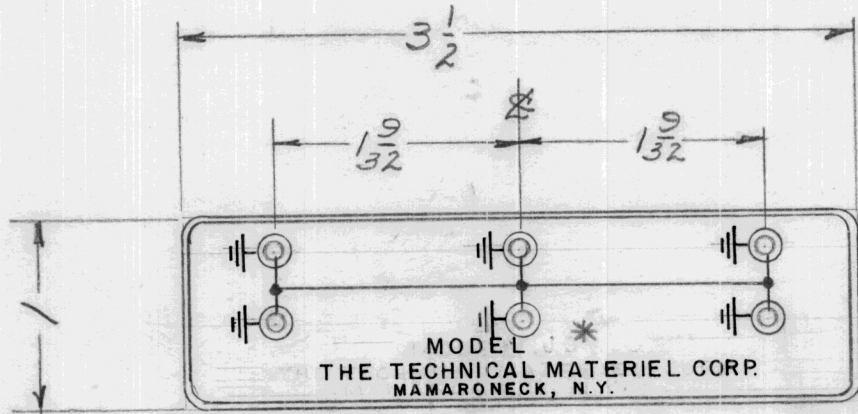
DEC. DIM. ±
 FRAC. DIM. ±
 ANGULAR DIM. ±

SCALE: 2X
 MAXIMUM ALLOWABLE TOLERANCES HAVE BEEN DETERMINED AND ANY DEVIATIONS WILL BE CAUSE FOR REJECTION.
 REMOVE ALL BURRS AND SHARP EDGES

TMC PART NO.	MODEL * NO.
NP239	JB103
NP239-2	JB114

REQ. PER UNIT	USED ON		
	MODEL	ASS'Y. NO.	DATE
1	JB-103		

NP-239 B



NOTE:
 ALL LETTERING, SYMBOLS & BORDER TO BE BLACK.
 BACKGROUND TO BE ALUMINUM CLEAR ANODIZED.
 ADHESIVE BACKING WATER SOLVENT.
 APPLICATION - PAINTED SURFACE
 * SEE CHART FOR MODEL NO.

122
 10/29/59

ISSUE	ITEM	CHANGED FROM	DATE	CH. NO.	DRAFTS	CHECKER	ENG. APP.	REQ. ITEM	PART NO.	DESCRIPTION	SYMBOL	
								.003 To .005		THE TECHNICAL MATERIEL CORP.		
								STOCK SIZE		MAMARONECK, NEW YORK		
B		ADD CHART & JB103 ON PICT. DELETED	1-27-56	21356	2	CL		ALUMINUM FOIL		SCHEMATIC DIAGRAM		
A	1	PICTORIAL CLARIFIED	7/22/59					MATERIAL				
								CP	CP	10-29-58		
								TYPE & TEMPER	HEAT TREAT. SPEC.	DRAWN	CHECKED	FINAL APPROVAL
								SEE NOTE				
								FINISH & SPEC. NO.		ELEC. DES. APP.	MECH. DES. APP.	
												NP-239 B

REQ.
PER
UNIT

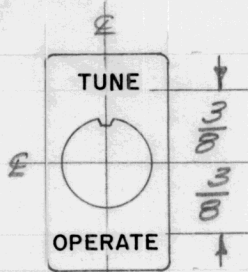
MODEL

USED ON

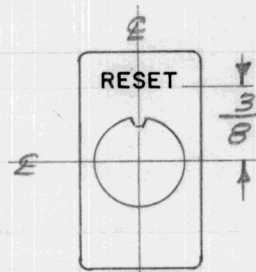
ASS'Y. NO.

DATE

NP-240



NP-240-1



NP-240-2

NOTES-

FINISH- 5101 Caustic Dip
5114 Zinc Chromate Primer
5115 Smooth Grey Enamel

All Lettering to be Engraved, 3/64" High (Approx),
White Filled.

Ref- Use Blank Plate TMC No. PO-156

REQ.	ITEM	PART NO.	DESCRIPTION				SYMBOL
			THE TECHNICAL MATERIEL CORP. MAMARONECK, NEW YORK NAMEPLATE, INSTRUCTION, SWITCH				
			MATERIAL				
			TYPE & TEMPER HEAT TREAT. SPEC. DRAWN CHECKED FINAL APPROVAL				
			FINISH & SPEC. NO.				

ISSUE	ITEM	CHANGED FROM	DATE	CH. NO.	DRAFTS	CHECKER	ENG. APP.
TOLERANCES			SCALE: FULL				
DEC. DIM. ±			MAXIMUM ALLOWABLE TOLERANCES HAVE BEEN DETERMINED AND ANY DEVIATIONS WILL BE CAUSE FOR REJECTION. REMOVE ALL BURRS AND SHARP EDGES				
FRAC. DIM. ±							
ANGULAR DIM. ±							

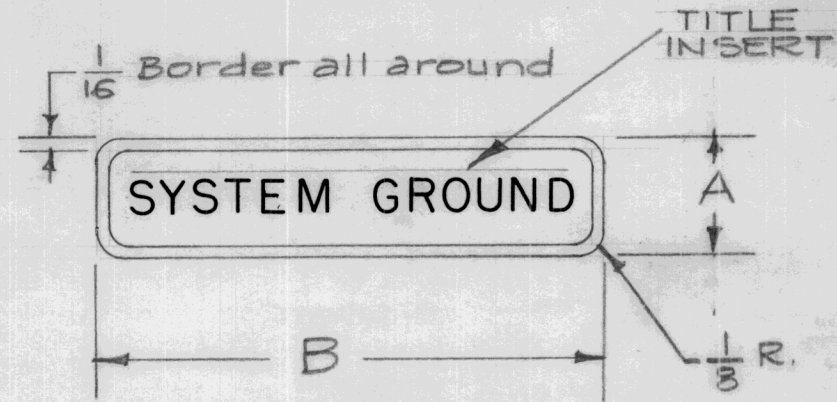
46 10/1/58

JWD

JSR

NP-240

TMC NO.	TITLE INSERT (POSITIONED AS SHOWN BELOW)	LETTER HEIGHT	DIM. "A"	DIM. "B"	USED ON			NP-265	A
					MODEL	ASS'Y. NO.	DATE		
NP-265-1	SYSTEM GROUND	3/16"	5/8"	2-5/8"					
NP-265-2	MODIFICATION S-506	1/8"	1/2"	2"					

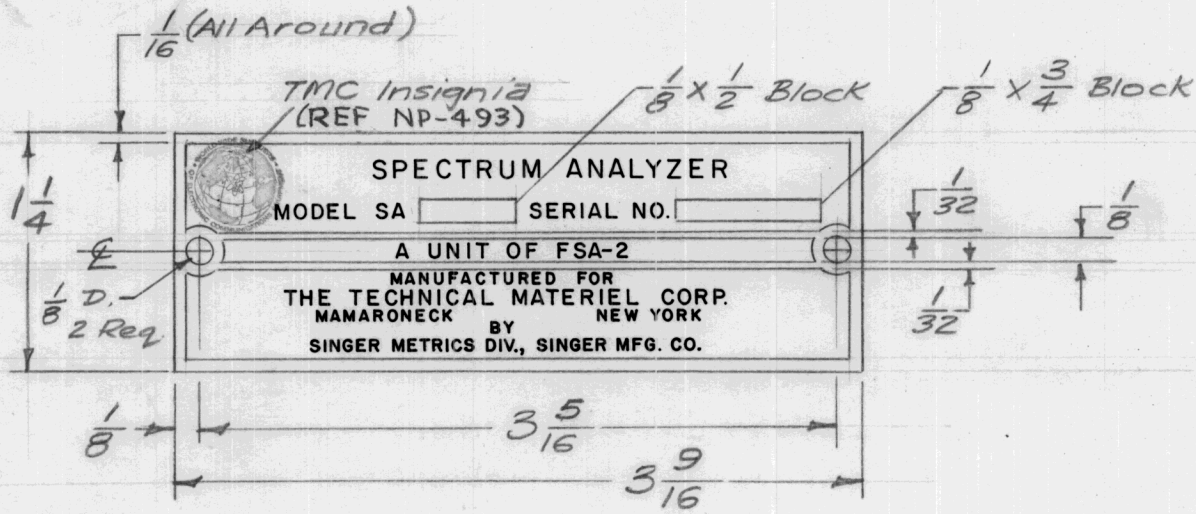


NOTE:

1. Aluminum Colored Gothic Lettering (Size as per chart)
2. Background to be black, with Aluminum Border.
3. To be supplied with Adhesive Backing. Must Adhere to Painted Surfaces.

ISSUE	ITEM	CHANGED FROM	DATE	CH. NO.	DRAFTS	CHECKER	ENG. APP.	REQ.	ITEM	PART NO.	DESCRIPTION	SYMBOL	
											THE TECHNICAL MATERIEL CORP. MAMARONECK, NEW YORK		
										.003 to .005 THK. STOCK SIZE	NAMEPLATE, INSTRUCTION		
										Aluminum Foil			
										MATERIAL			
A	1	ITEM NP-265-2 ADDED	8-11-60	2747	RU	JCB	[Signature]						
TOLERANCES			SCALE:					Anodized		16 ^{12/17/58}	[Signature]	[Signature]	
DEC. DIM. ± FRAC. DIM. ± ANGULAR DIM. ±			MAXIMUM ALLOWABLE TOLERANCES HAVE BEEN DETERMINED AND ANY DEVIATIONS WILL BE CAUSE FOR REJECTION. REMOVE ALL BURRS AND SHARP EDGES					TYPE & TEMPER	HEAT TREAT. SPEC.	DRAWN	CHECKED	FINAL APPROVAL	
								See Note				NP-265	A
								FINISH & SPEC. NO.	ELEC. DES. APP		MECH. DES. APP		

REQ. PER. UNIT	USED ON			NP-277	B
	MODEL	ASS'Y. NO.	DATE		
1	SA-2		3-9-59		

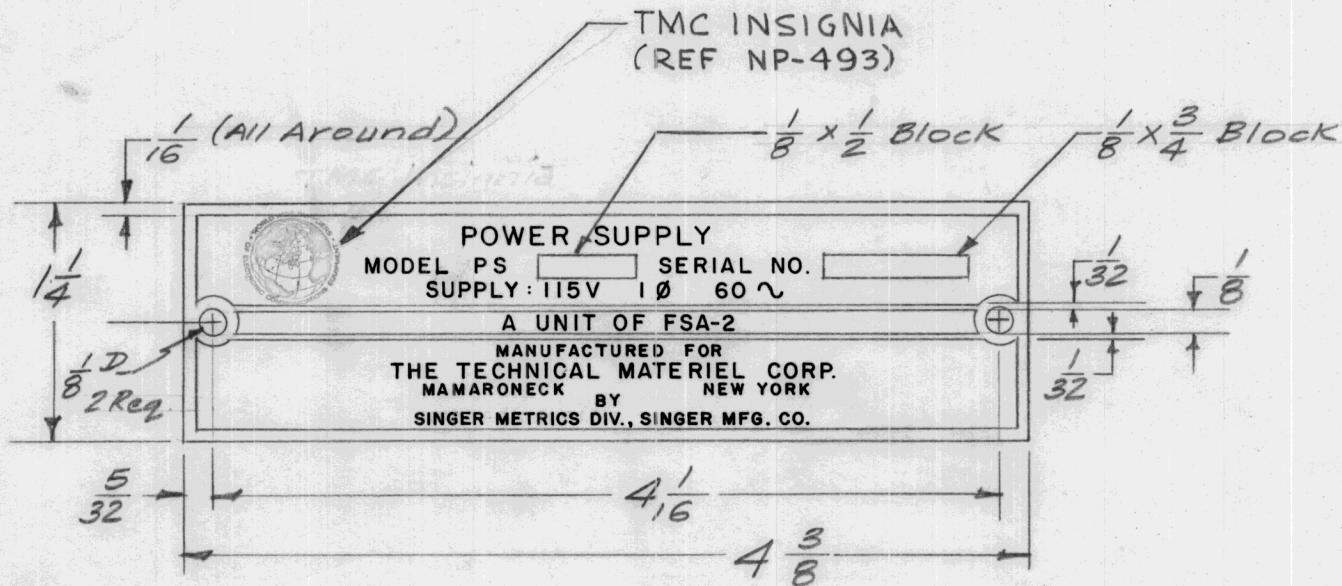


All Lettering Approx. to Scale

Ref - Navy Nameplate - NP-263

								REQ.	ITEM	PART NO.	DESCRIPTION	SYMBOL									
								.032 THK.		THE TECHNICAL MATERIEL CORP.											
								STOCK SIZE		MAMARONECK, NEW YORK											
B	1	MFG WAS PANORAMIC RADIO PRODUCTS INC.	7-17-63	9516	EQ	NP			NAMEPLATE, IDENTIFICATION, COMMERCIAL (SA)												
A	1	NEW TMC INSIGNIA ADDED	8-7-62	7046	MJT																
ISSUE	ITEM	CHANGED FROM	DATE	CH. NO.	DRAFTS	CHECKER	ENG. APP.	MATERIAL													
TOLERANCES			SCALE: FULL					250		16 ^{3/9} /59	File	OKB									
DEC. DIM. ±			MAXIMUM ALLOWABLE TOLERANCES HAVE BEEN DETERMINED AND ANY DEVIATIONS WILL BE CAUSE FOR REJECTION. REMOVE ALL BURRS AND SHARP EDGES					TYPE & TEMPER		HEAT TREAT. SPEC.		DRAWN		CHECKED		FINAL APPROVAL					
FRAC. DIM. ± 1/64								Black Matte Background & Clear Lacquer										NP-277		B	
ANGULAR DIM. ±								FINISH & SPEC. NO.		ELEC. DES. APP		MECH. DES. APP									

REQ. PER. UNIT	USED ON			NP-278	B
	MODEL	ASSY. NO.	DATE		
1	PS-2		3-9-59		

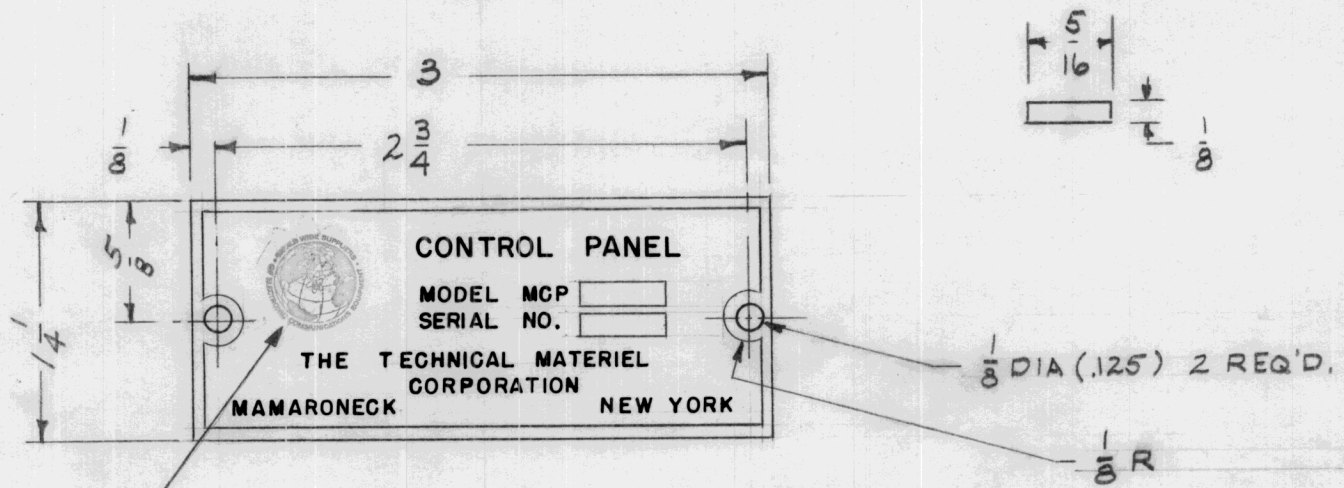


All Lettering Approx. to Scale.

Ref - Navy Nameplate NP-264

ISSUE	ITEM	CHANGED FROM	DATE	CH. NO.	DRAFTS	CHECKER	ENG. APP.	REQ.	ITEM	PART NO.	DESCRIPTION	SYMBOL							
										.032 THK.	THE TECHNICAL MATERIEL CORP. MAMARONECK, NEW YORK NAMEPLATE, IDENTIFICATION, COMMERCIAL (PS)	NP-278 B							
B	1	MFG WAS PANORAMIC RADIO PRODUCTS INC.	7-17-63	9516						STOCK SIZE									
A	1	NEW TMC INSIGNIA ADDED	8-7-62	7046	MJT					ALUMINUM									
										MATERIAL									
										250	16 3/9/59								
TOLERANCES			SCALE: FULL																
DEC. DIM. ±			MAXIMUM ALLOWABLE TOLERANCES HAVE BEEN DETERMINED AND ANY DEVIATIONS WILL BE CAUSE FOR REJECTION. REMOVE ALL BURRS AND SHARP EDGES					TYPE & TEMPER		HEAT TREAT. SPEC.		DRAWN		CHECKED		FINAL APPROVAL			
FRAC. DIM. ± 1/16								Black Matte Background & Clear Lacquer											
ANGULAR DIM. ±								FINISH & SPEC. NO.		ELEC. DES. APP		MECH. DES. APP							

REQ. PER UNIT	USED ON			NP-279	B
	MODEL	ASS'Y. NO.	DATE		
1	MCP	P/O EPT10K			



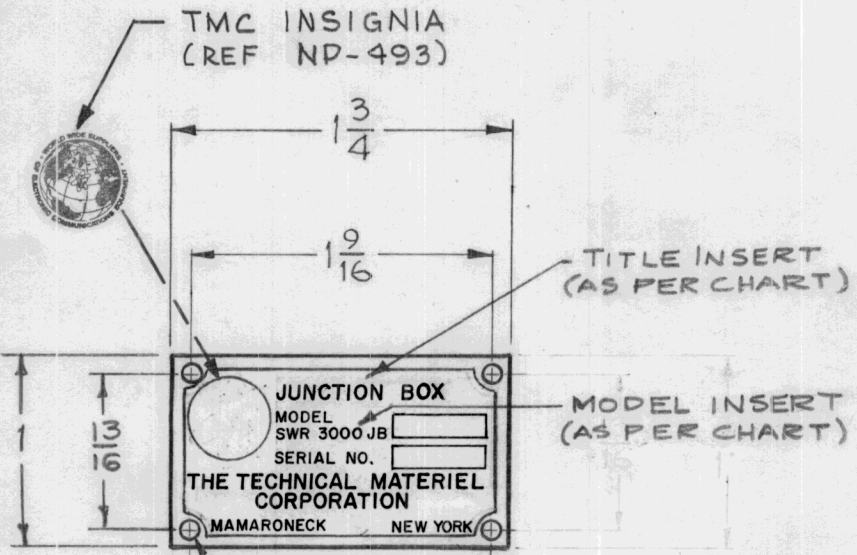
TMC INSIGNIA
(REF NP-493)

ISSUE	ITEM	CHANGED FROM	DATE	CH. NO.	DRAFTS	CHECKER	ENG. APP.	REQ.	ITEM	PART NO.	DESCRIPTION	SYMBOL					
										.032	THE TECHNICAL MATERIEL CORP. MAMARONECK, NEW YORK						
B	1	NEW TMC INSIGNIA ADDED	8-7-62	7046	MJT	<i>[Signature]</i>	<i>[Signature]</i>			STOCK SIZE	NAME PLATE						
A	1	SERIAL WAS SERIEL	2-6-62	6322	EG	<i>[Signature]</i>	<i>[Signature]</i>			ALUMINUM	IDENTIFICATION COMMERCIAL						
TOLERANCES								SCALE:									
DEC. DIM. ± FRAC. DIM. ± ANGULAR DIM. ±								MAXIMUM ALLOWABLE TOLERANCES HAVE BEEN DETERMINED AND ANY DEVIATIONS WILL BE CAUSE FOR REJECTION. REMOVE ALL BURRS AND SHARP EDGES									
								250		DRAWN		CHECKED		FINAL APPROVAL			
								TYPE & TEMPER BLACK MATTE BACKGROUND & CLEAR LACQUER		HEAT TREAT. SPEC.		DRAWN		CHECKED		FINAL APPROVAL	
								FINISH & SPEC. NO.		ELEC. DES. APP		MECH. DES. APP		NP-279 B			

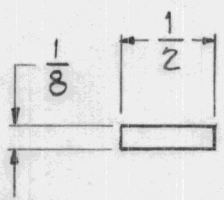
REQ. PER. UNIT	USED ON		
	MODEL	ASS'Y. NO.	DATE
			5-14-59

NP-283 C

TMC NO.	TITLE INSERT	MODEL INSERT
NP-283-1	JUNCTION BOX	SWR-3000JB
NP-283-2	JUNCTION BOX	JBIII
NP-283-3	REMOTE PANEL	KIT-319



3/32 (.093) DIA. - 4 Req.



APPROX. SIZE OF BLOCKS

NOTE ~ ALL LETTERING APPROX. TO SCALE.

ISSUE	ITEM	CHANGED FROM	DATE	CH. NO.	DRAFTS	CHECKER	ENG. APP.	REQ. ITEM	PART NO.	DESCRIPTION	SYMBOL	
C		NP-283-3 ADDED	12-21-66	17557	RME	<i>[Signature]</i>	<i>[Signature]</i>	.032		THE TECHNICAL MATERIEL CORP. MAMARONECK, NEW YORK	NAME PLATE	
B	1	NP-283-2 ADDED	1-4-65	13209	MB	<i>[Signature]</i>	<i>[Signature]</i>	STOCK SIZE				
A	1	NEW TMC INSIGNIA ADDED	8-8-62	7046	MJT	<i>[Signature]</i>	<i>[Signature]</i>	ALUMINUM				
TOLERANCES			SCALE:					250		J.C. BIELE	<i>[Signature]</i>	<i>[Signature]</i>
DEC. DIM. ± FRAC. DIM. ± ANGULAR DIM. ±			MAXIMUM ALLOWABLE TOLERANCES HAVE BEEN DETERMINED AND ANY DEVIATIONS WILL BE CAUSE FOR REJECTION. REMOVE ALL BURRS AND SHARP EDGES					TYPE & TEMPER	HEAT TREAT. SPEC.	DRAWN	CHECKED	FINAL APPROVAL
								BLACK MATTE BACKGROUND & CLEAR LACQUER				
								FINISH & SPEC. NO.		ELEC. DES. APP	MECH. DES. APP	NP-283 C

TMC No	MODEL INSERT
NP-285 - 1	JB-100
NP-285 - 2	JB-102
NP-285 - 3	JB-112

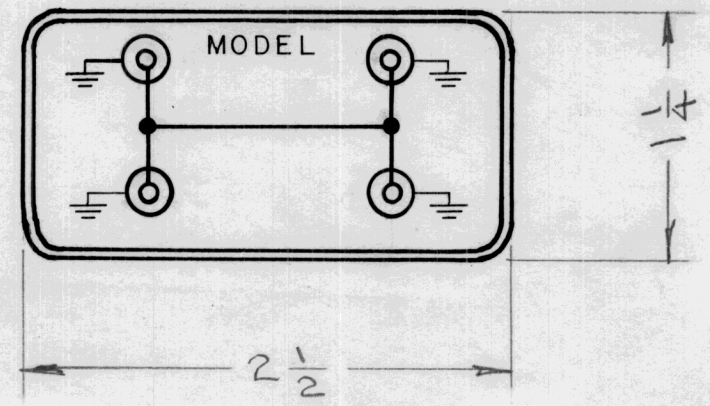
REQ. PER. UNIT	USED ON			NP-285	A
	MODEL	ASS'Y. NO.	DATE		
1	JB-100		6-12-59		
1	JB-102		6-12-59		

NOTE:

All Lettering, Symbols and Border to be black.
 Background to be aluminum clear anodized.
 Adhesive backing, Water solvent.

APPLICATION: Painted Surface

MODEL INSERT



ISSUE	ITEM	CHANGED FROM	DATE	CH. NO.	DRAFTS	CHECKER	ENG. APP.	REQ. ITEM	PART NO.	DESCRIPTION	SYMBOL				
								.003 TO .005		THE TECHNICAL MATERIEL CORP.					
								STOCK SIZE		MAMARONECK, NEW YORK					
A		ADDED NP.285-3	4.16.68	18873	MS.	WV	EFM	ALUMINUM FOIL		SCHMATIC DIAGRAM					
								MATERIAL		DECAL					
TOLERANCES			SCALE:												
DEC. DIM. ±			MAXIMUM ALLOWABLE TOLERANCES HAVE BEEN DETERMINED AND ANY DEVIATIONS WILL BE CAUSE FOR REJECTION. REMOVE ALL BURRS AND SHARP EDGES					TYPE & TEMPER	HEAT TREAT. SPEC.	DRAWN	CHECKED	FINAL APPROVAL			
FRAC. DIM. ±															
ANGULAR DIM. ±															
								FINISH & SPEC. NO.		ELEC. DES. APP.	MECH. DES. APP.				
												NP-285	A		