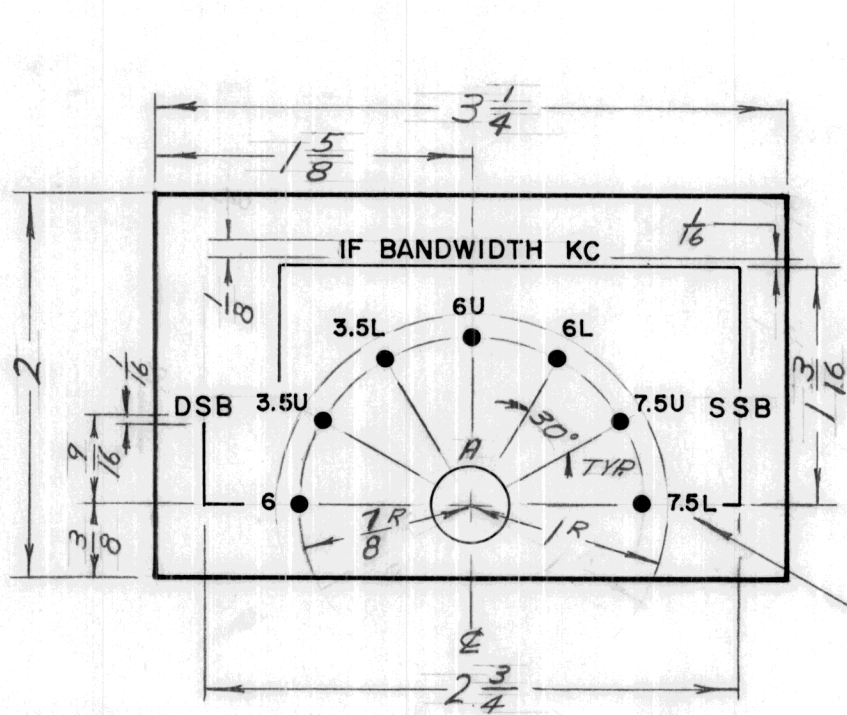


ISSUE	ITEM	CHANGED FROM	DATE	CN. NO.	DRAFTS	CHECKER	ENG. APP.	REQ.	ITEM	PART NO.	DESCRIPTION	SYMBOL
0	1	ORIGINAL RELEASE FOR PRODUCTION	4/15/64	0	AM							



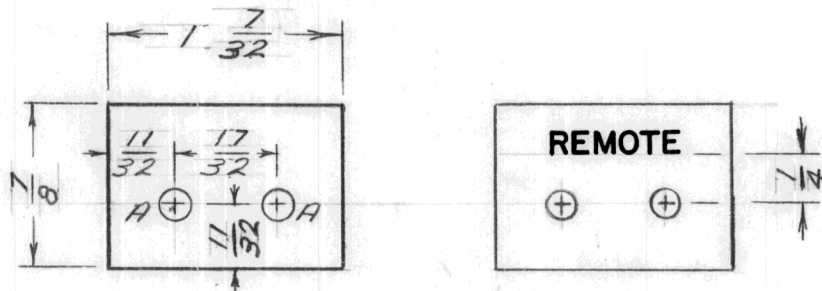
HOLE A - $\frac{3}{8}$ DIA

ENGRAVING: WHITE FILLED
- HEIGHT & LOCATION
AS SHOWN

$\frac{3}{32}$ HIGH TYP.

HFI-1		6-3-64		.051		TMC (Canada) LIMITED	
MODEL	PROJECT NO.	ASS'Y. NO.	DATE	STOCK SIZE		OTTAWA	ONTARIO
USED ON				ALUM.	CCIR MOD. FOR		
MAXIMUM ALLOWABLE TOLERANCES HAVE BEEN DETERMINED AND DEVIATIONS WILL BE CAUSE FOR REJECTION. REMOVE ALL BURRS AND SHARP EDGES		IF IT IS FOUND DESIRABLE TO CHANGE ANY TOLERANCE OR OTHER DETAIL SPECIFIED ON THIS DRAWING NOTIFY THE PURCHASER PROMPTLY.		MATERIAL	WEIGHT PER PC.	HFI-1	
TOLERANCES		SCALE		575-H32	RD		
DEC. DIM. ±		DIMENSIONS IN INCHES UNLESS OTHERWISE SPECIFIED		TYPE & TEMPER		DRAWN	ELEC. DES. APP.
FRAC. DIM. ±		DRILL, PUNCH, COMMERCIAL STOCK SIZES AND MANUFACTURERS TOLERANCES ARE NOT INCLUDED.		HEAT TREAT. SPEC.		MECH. DES. APP.	
ANGULAR DIM. ±				S-115 - SMOOTH GREY ENAMEL		CHECKED	
				FINISH & SPEC. NO.		FINAL APPROVAL	
						NP10121 0	

ISSUE	ITEM	CHANGED FROM	DATE	CN. NO.	DRAFTS	CHECKER	ENG. APP.	REQ.	ITEM	PART NO.	DESCRIPTION	SYMBOL
0		ORIGINAL RELEASE FOR PRODUCTION	3.2.65	0	AL							



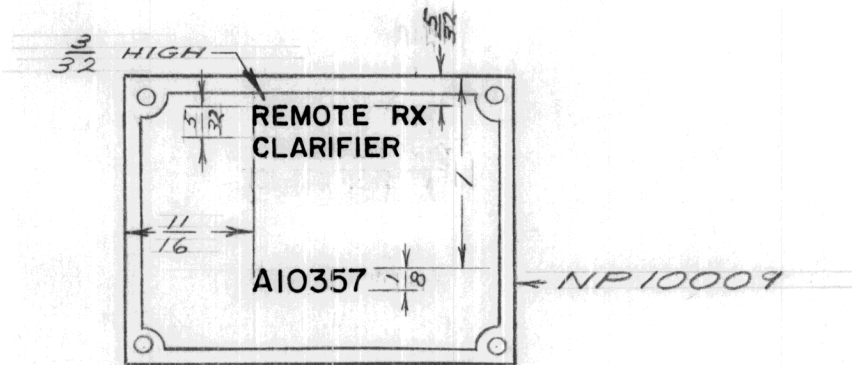
"A" HOLES - 9/64 DIA - 2 REQ

LETTERING: 1/8 HIGH WHITE GOTHIC
LOCATED AS SHOWN
AS PER TMC SPEC: 5127

TTRR-251		022/65		14-12-64		.040		TMC (Canada) LIMITED OTTAWA ONTARIO					
MODEL		PROJECT NO.		ASS'Y. NO.		DATE						STOCK SIZE	
USED ON						ALUM.		NAMEPLATE					
MAXIMUM ALLOWABLE TOLERANCES HAVE BEEN DETERMINED AND DEVIATIONS WILL BE CAUSE FOR REJECTION. REMOVE ALL BURRS AND SHARP EDGES				IF IT IS FOUND DESIRABLE TO CHANGE ANY TOLERANCE OR OTHER DETAIL SPECIFIED ON THIS DRAWING NOTIFY THE PURCHASER PROMPTLY.				MATERIAL		WEIGHT PER PC.		(REMOTE)	
								5052-H32				RD	
TOLERANCES				SCALE				HEAT TREAT. SPEC.		DRAWN		CHECKED	
ALL OTHERS: DEC. DIM. ± FRAC. DIM. ± ANGULAR DIM. ±				DIMENSIONS IN INCHES UNLESS OTHERWISE SPECIFIED DRILL, PUNCH, COMMERCIAL STOCK SIZES AND MANUFACTURERS TOLERANCES ARE NOT INCLUDED.				5115-SMOOTH GREY ENAMEL		FINAL APPROVAL		NP10125 0	
								FINISH & SPEC. NO.					

ISSUE	ITEM	CHANGED FROM	DATE	CN. NO.	DRAFTS	CHECKER	ENG. APP.	REQ.	ITEM	PART NO.	DESCRIPTION	SYMBOL
-------	------	--------------	------	---------	--------	---------	-----------	------	------	----------	-------------	--------

0		ORIGINAL RELEASE FOR PRODUCTION	3.2.65	0	SL							
---	--	---------------------------------	--------	---	----	--	--	--	--	--	--	--



A10357	022/65		29-12-64
MODEL	PROJECT NO.	ASS'Y. NO.	DATE

USED ON

MAXIMUM ALLOWABLE TOLERANCES HAVE BEEN DETERMINED AND DEVIATIONS WILL BE CAUSE FOR REJECTION. REMOVE ALL BURRS AND SHARP EDGES

IF IT IS FOUND DESIRABLE TO CHANGE ANY TOLERANCE OR OTHER DETAIL SPECIFIED ON THIS DRAWING NOTIFY THE PURCHASER PROMPTLY.

TOLERANCES	SCALE
ALL OTHERS:	DIMENSIONS IN INCHES UNLESS OTHERWISE SPECIFIED
DEC. DIM. ±	DRILL, PUNCH, COMMERCIAL STOCK SIZES AND MANUFACTURERS TOLERANCES ARE NOT INCLUDED.
FRAC. DIM. ±	
ANGULAR DIM. ±	

STOCK SIZE	
MATERIAL	WEIGHT PER PC.
TYPE & TEMPER	
HEAT TREAT. SPEC.	
FINISH & SPEC. NO.	

TMC (Canada) LIMITED
OTTAWA ONTARIO

NAMEPLATE IDENTIFICATION

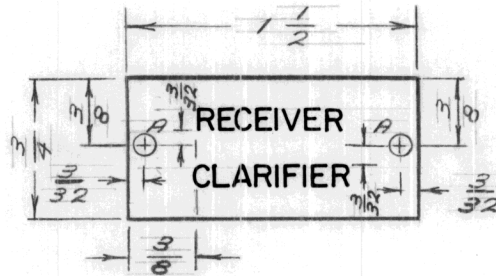
R.D. [Signature] [Signature]

DRAWN [Signature] ELEC. DES. APP. [Signature] MECH. DES. APP. [Signature]

CHECKED [Signature] FINAL APPROVAL [Signature]

NP10126 0

ISSUE	ITEM	CHANGED FROM	DATE	CN. NO.	DRAFTS	CHECKER	ENG. APP.	REQ.	ITEM	PART NO.	DESCRIPTION	SYMBOL
0		ORIGINAL RELEASE FOR PRODUCTION	3-2-65	0	21							



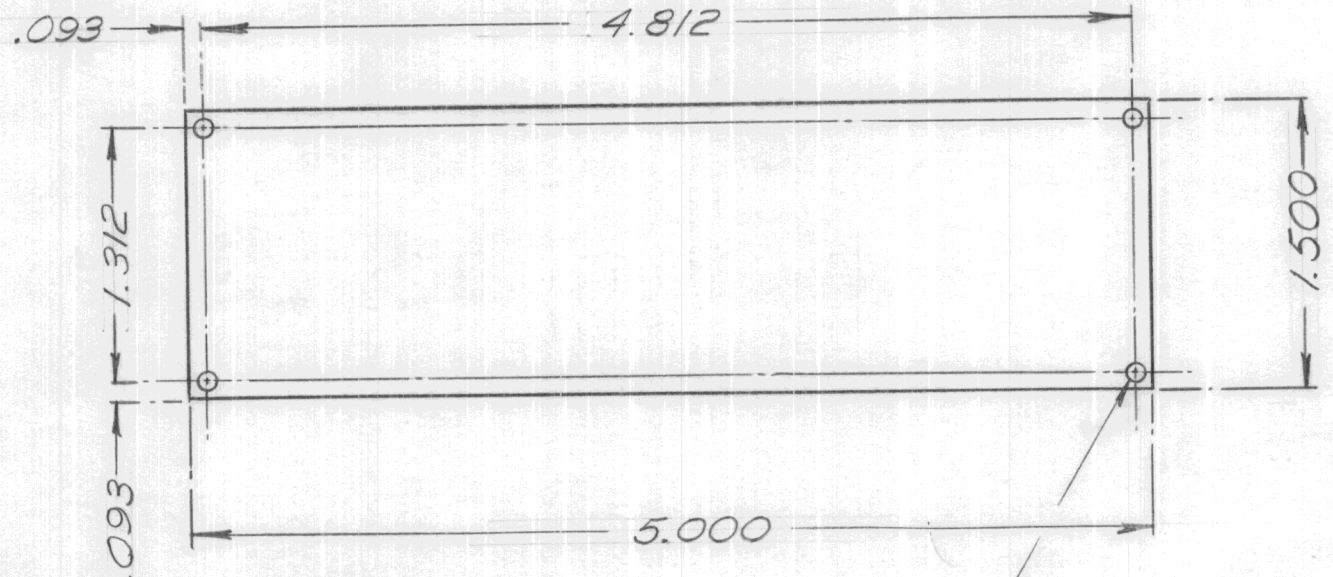
"A" HOLE 9/64" DIA (2 REQ)

LETTERING: 1/8 HIGH WHITE GOTHIC
LOCATED AS SHOWN

022/65		A10357		30-12-64		.032		TMC (Canada) LIMITED OTTAWA ONTARIO			
MODEL	PROJECT NO.	ASS'Y. NO.	DATE	STOCK SIZE		ALUM					
USED ON						MATERIAL	WEIGHT PER PC.	RD			
MAXIMUM ALLOWABLE TOLERANCES HAVE BEEN DETERMINED AND DEVIATIONS WILL BE CAUSE FOR REJECTION. REMOVE ALL BURRS AND SHARP EDGES			IF IT IS FOUND DESIRABLE TO CHANGE ANY TOLERANCE OR OTHER DETAIL SPECIFIED ON THIS DRAWING NOTIFY THE PURCHASER PROMPTLY.			TYPE & TEMPER		DRAWN		ELEC. DES. APP.	MECH. DES. APP.
						HEAT TREAT. SPEC.		CHECKED		FINAL APPROVAL	
TOLERANCES			SCALE			FINISH & SPEC. NO.		NP10127			
ALL OTHERS:	DEC. DIM. ±	DIMENSIONS IN INCHES UNLESS OTHERWISE SPECIFIED			5115! SMOOTH GREY ENAMEL						
	FRAC. DIM. ±	DRILL, PUNCH, COMMERCIAL STOCK SIZES AND MANUFACTURERS TOLERANCES ARE NOT INCLUDED.									
	ANGULAR DIM. ±										

LD 10174

ISSUE	ITEM	CHANGED FROM	DATE	CN. NO.	DRAFTS	CHECKER	ENG. APP.	REQ.	ITEM	PART NO.	DESCRIPTION	SYMBOL
X		ENG RELEASE	25 APRIL 73		CC							



1. FINISH: POLISH ONE SIDE

SILKSCREEN AS PER LD 10474 & TO BE APPLIED ON POLISHED SIDE

.093 DIA., 4 PLACES

NOTES:

TRS 400		25 APRIL 73		.064 THK		TMC (Canada) LIMITED	
MODEL	PROJECT NO.	ASSY. NO.	DATE	STOCK SIZE		OTTAWA	ONTARIO
USED ON				AL ALY		NAMEPLATE,	
MAXIMUM ALLOWABLE TOLERANCES HAVE BEEN DETERMINED AND DEVIATIONS WILL BE CAUSE FOR REJECTION. REMOVE ALL BURRS AND SHARP EDGES				IF IT IS FOUND DESIRABLE TO CHANGE ANY TOLERANCE OR OTHER DETAIL SPECIFIED ON THIS DRAWING NOTIFY THE PURCHASER PROMPTLY.		575 H32	
						TYPE & TEMPER	
TOLERANCES				SCALE 1:1		DRAWN	
ALL OTHERS				DIMENSIONS IN INCHES UNLESS OTHERWISE SPECIFIED		ELEC. DES. APP.	
DEC. DIM. ± .05				DRILL: PUNCH, COMMERCIAL STOCK SIZES AND MANUFACTURERS TOLERANCES ARE NOT INCLUDED.		MECH. DES. APP.	
FRAC. DIM. ± 1/64						CHECKED	
ANGULAR DIM. ± 0° 30'						FINAL APPROVAL	
				FINISH & SPEC. NO.		NP 10177 X	

NP 10177