

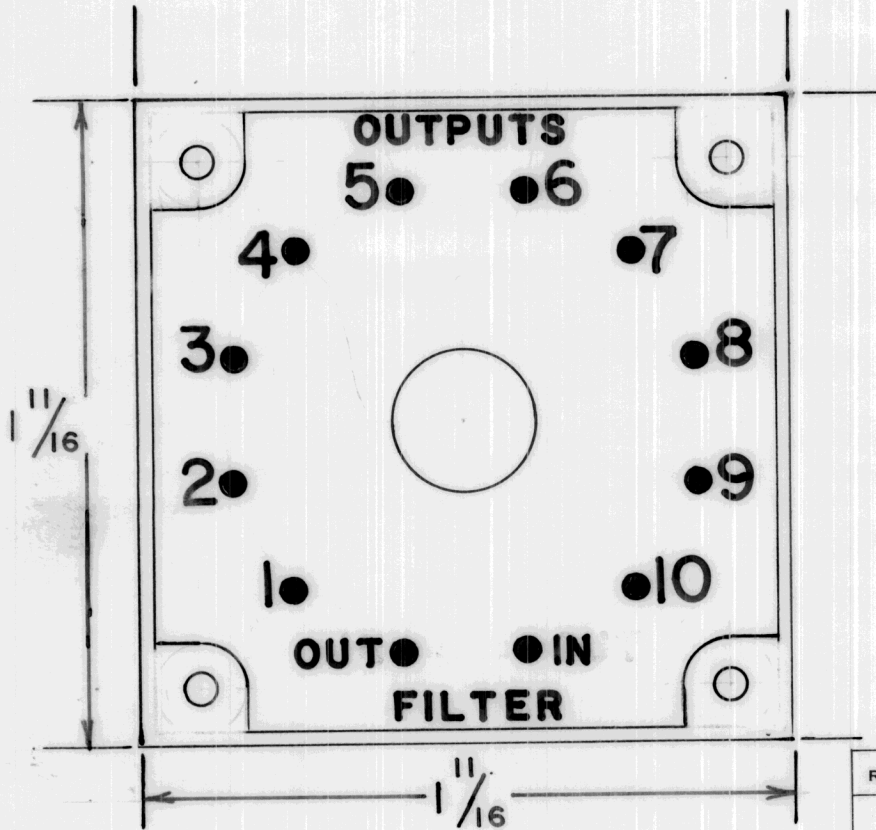
IF IT IS FOUND DESIRABLE TO CHANGE ANY TOLERANCE OR OTHER DETAIL SPECIFIED ON THIS DRAWING NOTIFY THE PURCHASER PROMPTLY.

NP-10070

MAXIMUM ALLOWABLE TOLERANCES HAVE BEEN DETERMINED AND DEVIATIONS WILL BE CAUSE FOR REJECTION. REMOVE ALL BURRS AND SHARP EDGES

USED ON

MODEL	PROJECT NO.	ASS'Y. NO.	DATE
LMC-10	CE-5107		19 AUG 60



Keep until further information

M. Vg.

REQ.	ITEM	PART NO.	DESCRIPTION	SYMBOL
		.032	TMC (Canada) LIMITED OTTAWA ONTARIO	
		STOCK SIZE		
		ALUM ALLOY	ESCUTCHEON PLATE	
		MATERIAL WEIGHT PER PC. ALCAN 2S-H " 3S-H ALCOA 2S-H18	METER SWITCH LMC-10	
		TYPE & TEMPER	WHDAVISON	<i>M. Vg.</i>
			DRAWN	ELEC. DES. APP. MECH. DES. APP.
			<i>W. H. Davison</i>	<i>W. H. Davison</i>
		HEAT TREAT. SPEC.	CHECKED	FINAL APPROVAL
		BLACK ETCHED BACK-GROUND, CLEAR LAQUER		
		FINISH & SPEC. NO.		NP-10070

ISSUE	ITEM	CHANGED FROM	DATE	CN. NO.	DRAFTS	CHECKER	ENG. APP.

TOLERANCES

SCALE 1:2

DIMENSIONS IN INCHES UNLESS OTHERWISE SPECIFIED
DRILL, PUNCH, COMMERCIAL STOCK SIZES AND MANUFACTURERS TOLERANCES ARE NOT INCLUDED.

ALL OTHERS

DEC. DIM. ±
FRAC. DIM. ± 1/64
ANGULAR DIM. ±