

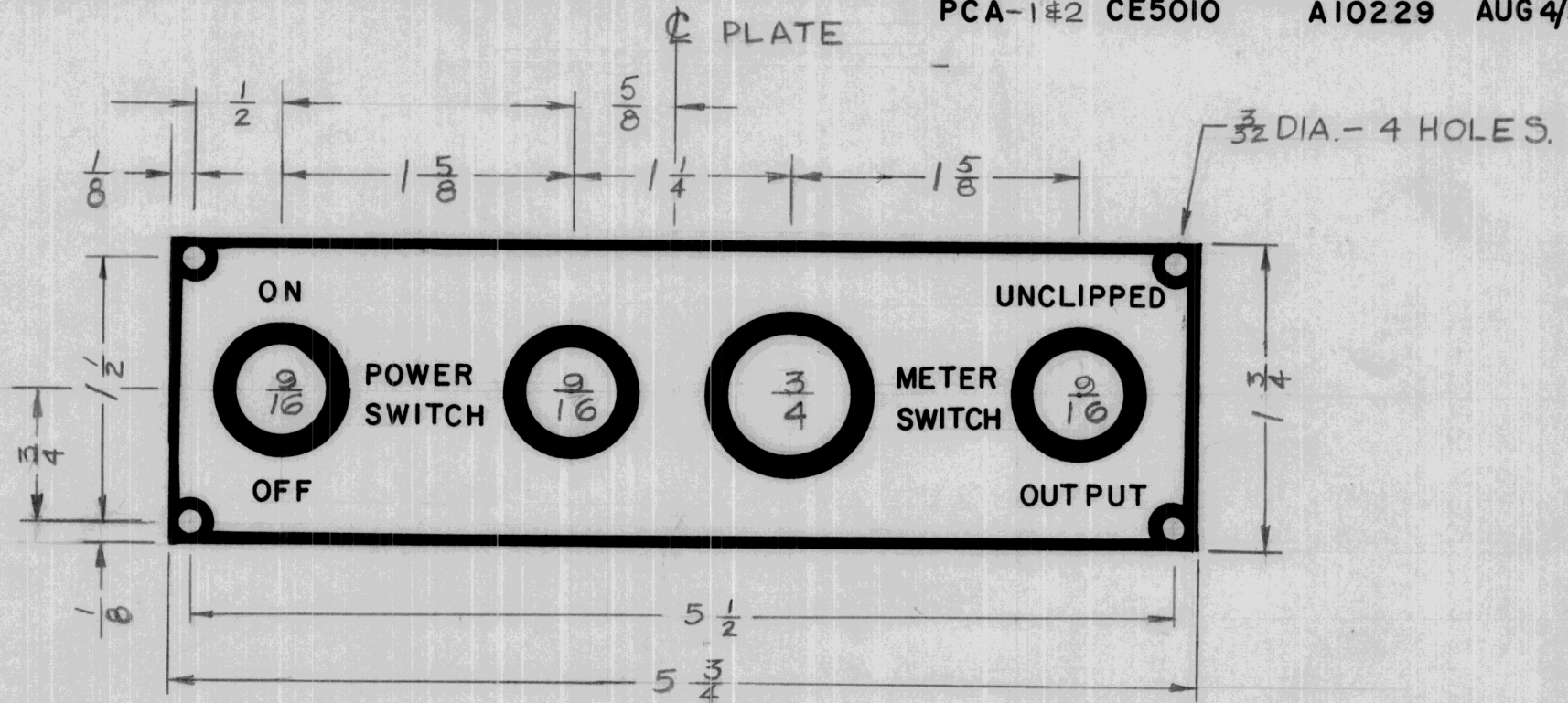
IF IT IS FOUND DESIRABLE TO CHANGE ANY TOLERANCE OR OTHER DETAIL SPECIFIED ON THIS DRAWING NOTIFY THE PURCHASER PROMPTLY.

NPI0047

MAXIMUM ALLOWABLE TOLERANCES HAVE BEEN DETERMINED AND DEVIATIONS WILL BE CAUSE FOR REJECTION. REMOVE ALL BURRS AND SHARP EDGES

USED ON

MODEL	PROJECT NO.	ASS'Y. NO.	DATE
PCA-1#2	CE5010	A10229	AUG 4/59



REQ.	ITEM	PART NO.	DESCRIPTION	SYMBOL
	.031TK. SHEET.		TMC (Canada) LIMITED	
	STOCK SIZE		OTTAWA ONTARIO	
	ALUM.		SWITCH ESCUTCHEON PLATE	
	MATERIAL	WEIGHT PER PC.	PCA-1#2	
	TYPE & TEMPER		JPC	
	ALCAN 2 SH		DRAWN	ELEC. DES. APP.
	ALCAN 3 SH		10CM	MECH. DES. APP.
	ALCOA 2 SH -10.			
	HEAT TREAT. SPEC.		CHECKED	FINAL APPROVAL
	REVERSE ETCH BLACK B.GROUND			NP-10047
	FINISH & SPEC. NO.			

ISSUE	ITEM	CHANGED FROM	DATE	CN. NO.	DRAFTS	CHECKER	ENG. APP.

TOLERANCES

SCALE 1:1

ALL OTHERS
DEC. DIM. \pm
FRAC. DIM. \pm 1/64
ANGULAR DIM. \pm

DRILL, PUNCH, COMMERCIAL STOCK SIZES AND MANUFACTURERS TOLERANCES ARE NOT INCLUDED.