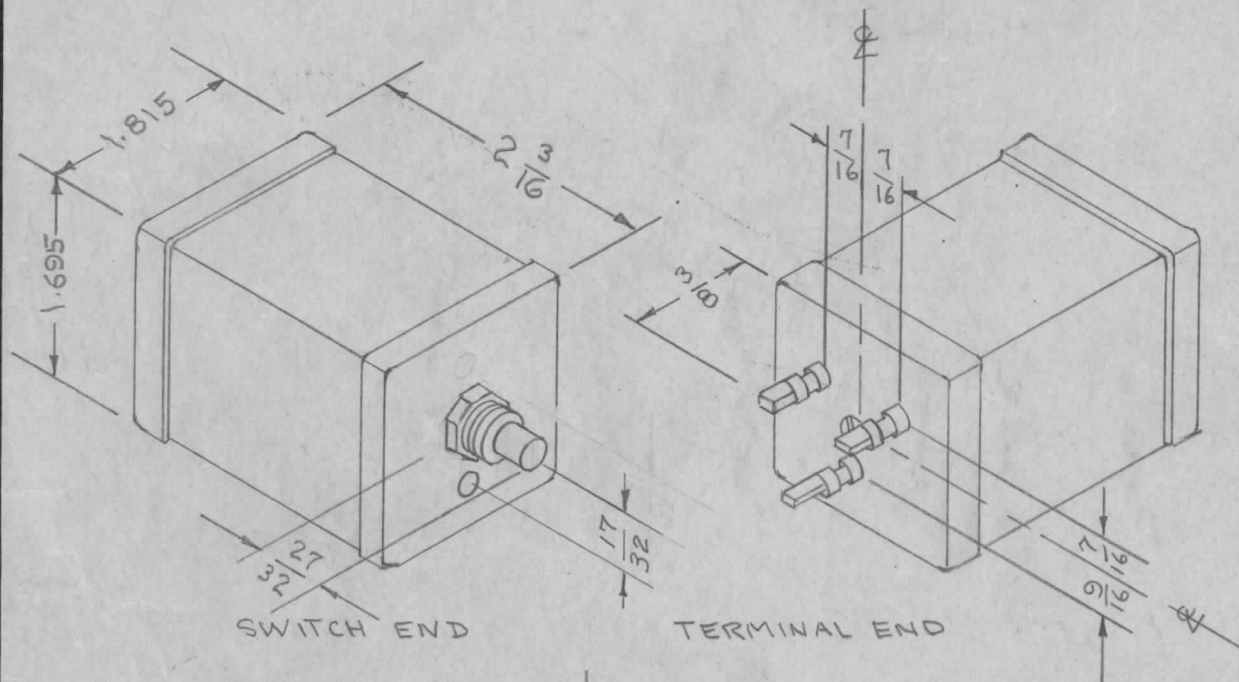


IF IT IS FOUND DESIRABLE TO CHANGE ANY TOLERANCE OR OTHER DETAIL SPECIFIED ON THIS DRAWING NOTIFY THE PURCHASER PROMPTLY.

NF-102 B

MAXIMUM ALLOWABLE TOLERANCES HAVE BEEN DETERMINED AND DEVIATIONS WILL BE CAUSE FOR REJECTION. REMOVE ALL BURRS AND SHARP EDGES

REQ. PER UNIT	USED ON			
	MODEL	PROJECT NO.	ASS'Y. NO.	DATE
1	RSC-2	170	A-865	11-3-54



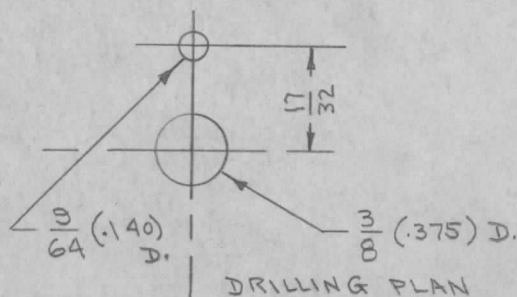
MECHANICAL SPECIFICATIONS

- (1) Case - Steel
- (2) Color - Grey

ELECTRICAL SPECIFICATIONS

- (1) Resonant circuit with provisions for following frequencies; 500 cps, 750 cps, 1000 cps, 1250 cps; all $\pm 5\%$, and for "off" position.
- (2) Fixed insertion loss ≤ 14 D.B.
- (3) Ratio of off position to any one resonant frequency ≤ 3 D.B.

(Refer to CK-275 for associated circuitry).

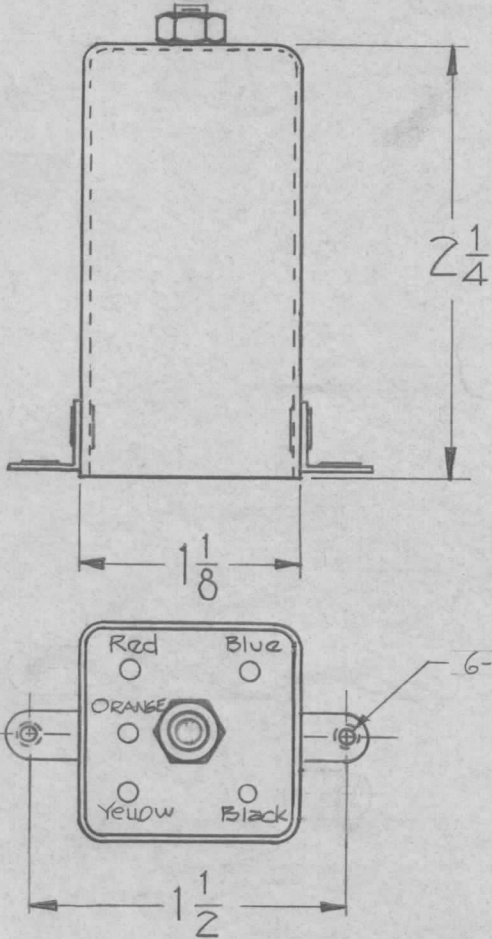


REQ.	ITEM	PART NO.	DESCRIPTION	SYMBOL
			THE TECHNICAL MATERIEL CORP.	
			MAMARONECK. NEW YORK	
STOCK SIZE			NETWORK AUDIO-SELECTIVE	
			NF-102	
			C.D.D 11-3-54	M.H.S.
			DRAWN	ELEC. DES. APP.
			M.H.S.	A.J.J.
			CHECKED	FINAL APPROVAL
			NF-102 B	

B	2	ON ASSY BLOCK A865 WAS A-864	246-63	9950			
	1	REF CK-275 WAS CK-195					
ISSUE	ITEM	CHANGED FROM	DATE	CN. NO.	DRAFTS	CHECKER	ENG. APP.

TOLERANCES		SCALE
ALL OTHERS	DEC. DIM. \pm FRAC. DIM. \pm ANGULAR DIM. \pm	DRILL, PUNCH, COMMERCIAL STOCK SIZES AND MANUFACTURERS TOLERANCES ARE NOT INCLUDED.

REQ. PER UNIT	USED ON			NF-106	B
	MODEL	ASS'Y. NO.	DATE		
1	CSS-1		5-2-60		



USED ON MODEL	REQ.	FUNCTION	OPER. FREQ.	SYM
CSS-1	1	COUPLING NETWORK	1 MC	Z601

ELECTRICAL SPECIFICATION

L-85⁺¹⁰ MICROHENRIES

Q-50 or Greater

FREQ(TEST) - 2.5 MCS

REQ.	ITEM	PART NO.	DESCRIPTION			SYMBOL	
			THE TECHNICAL MATERIEL CORP.				
			MAMARONECK, NEW YORK				
B	2	Elect. Spec. FREQ was 790KC	6-3-61	4983	<i>J.C.B.</i>		
	1	Elect. Spec. Q' was 75					
A	1	Electrical Specifications "L" was 100 Microhenries	10-24-60	3247	<i>J.C.B.</i>		
ISSUE	ITEM	CHANGED FROM	DATE	CH. NO.	DRAFTS	CHECKER	ENG. APP.
TOLERANCES			SCALE: 2A-1895				
DEC. DIM. ± FRAC. DIM. ± ANGULAR DIM. ±			MAXIMUM ALLOWABLE TOLERANCES HAVE BEEN DETERMINED AND ANY DEVIATIONS WILL BE CAUSE FOR REJECTION. REMOVE ALL BURRS AND SHARP EDGES				
TYPE & TEMPER		HEAT TREAT. SPEC.		DRAWN		CHECKED	
FINISH & SPEC. NO.		ELEC. DES. APP.		MECH. DES. APP.		NF-106 B	