

FREQUENCY: 1,000,000 MEGAHERTZ

SUPPLY VOLTAGE: OSCILLATOR +28 VOLTS D.C. +2, -5 VOLTS REGULATED TO 1%, OVEN +24 VOLTS D.C. +2, -5 VOLTS REGULATED TO 1% .65 AMPS MAX.

OUTPUT: 1 VOLT RMS MINIMUM 50 OHMS, SINE WAVE .

HAR. DISTORTION: 15% MAXIMUM .

SHOCK: 100G 8MS 5 PARTS IN 10⁸

VIBRATION: 5 TO 55 CPS .016 INCHES D.A. 5 PARTS IN 10⁸.

STABILITY: a. 1 PART IN 10⁸ PER DAY
b. 5 PARTS IN 10⁸ PER MONTH

SHORT TERM STABILITY: 4 PARTS 10⁹ PER 15 MINUTES AFTER 24 HOURS WARM-UP

AMBIENT: 0 TO +65°C 3 PARTS IN 10⁸. 1 PART IN 10⁸ PER 15°C CHANGE WITHIN THE TEMPERATURE RANGE OF 0 TO +65°C.

WARM-UP: a. 60 MINUTES FOR 1 PART ON 10⁷ PER DAY
b. 4 HOURS FOR 1 PART IN 10⁸ PER DAY.

ALTITUDE: 10,000 FEET NO CHANGE IN STABILITY

LOAD CHANGE: ±10% 5 PARTS IN 10⁹

VOLTAGE CHANGE: ±1 VOLT 1 PART IN 10⁸ MAX

STORAGE: -65°C TO +75°C

HUMIDITY: UNIT HERMETICALLY SEALED

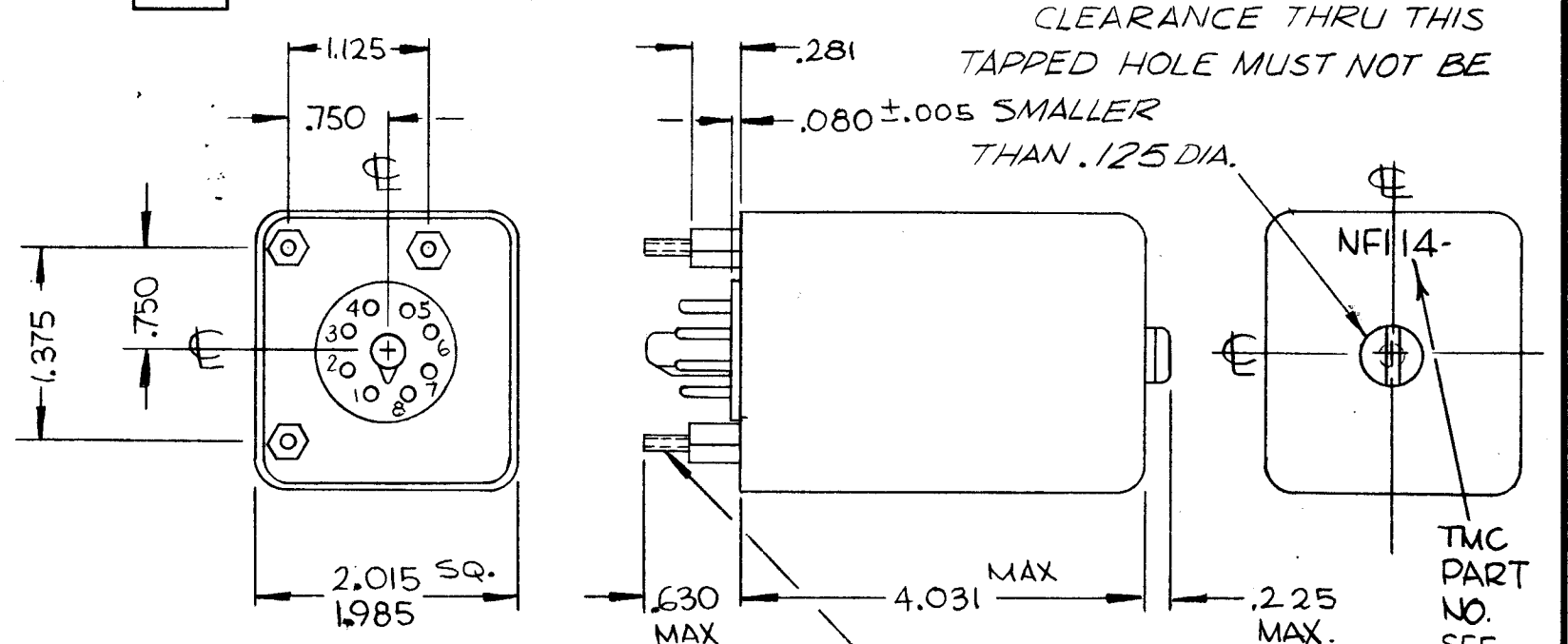
MINIMUM TRIM RANGE: INTERNAL PISTON TRIMMER ± 0.7 PARTS IN 10⁶.

VARICAP TRIM: GREATER THAN 1 PART IN 10⁷ AND LESS THAN 3 PART IN 10⁷ WITH A VOLTAGE CHANGE OF +3.2 TO +5.8 VOLTS.

JITTER: 3° RMS IN 10 MILLISECONDS

MARKING: MARK TMC PART NUMBER 1/8 HIGH GOTHIC WITH LATEST REV. LETTER (APPROX AS SHOWN).

		REVISIONS				
SYM	DESCRIPTION	DATE	E.M.N. NO.	DRAFT	CHKD	APPD
X1	SPECIFICATIONS REVISED	9.2.66				
X2	PICTORIAL ADDED	9.22.66		WHS		
Ø	ORIGINAL RELEASE FOR PROD	9/29/66				
A	DELETED INNER VIEW OF CAN. PIN 2 WAS +28VDC. ADD STD. DWG STAMP FREQUENCY ADDED	1-19-67	17701	RME	WHS	
B	NOTE ADD. TO TRIMMER ADJ ACC HOLE	5.21.69	19437	GE	WHS	OP
C	PIN 2 WAS 24VDC	1-9-70	19712	KD	WHS	O.P.



- OCTAL BASE CONNECTIONS
- PIN 1 - NC
 - 2 - OSC +28VDC
 - 3 - OVEN +28VDC
 - 4 - VARICAP +
 - 5 - VARICAP -
 - 6 - OSC OUTPUT
 - 7 - RF GRD -28VDC
 - 8 - NC

STANDARD DRAWING

NOTES

Q'TY./UNIT	MODEL USED ON	ASS'Y. NO.
SCALE	CODE	S401-96 (970-1612-0)

THE CONTENTS OF THIS DRAWING ARE THE EXCLUSIVE PROPERTY OF THE TECHNICAL MATERIEL CORP. ITS UNAUTHORIZED USE OR REPRODUCTION IN WHOLE OR IN PART IS STRICTLY FORBIDDEN.

REQ'D.	ITEM	PART NUMBER	DESCRIPTION	SYMBOL
POSE LIST OF MATERIAL				
MATERIAL			THE TECHNICAL MATERIEL CORP. MAMARONECK, NEW YORK	
FINISH			TITLE OSCILLATOR, OVENIZED	
UNLESS OTHERWISE SPECIFIED DIMENSIONS ARE IN INCHES AND INCLUDE CHEMICALLY APPLIED OR PLATED FINISHES			DRAWN: <i>WHS</i> DATE: 9.22.66 CHECKED: <i>WHS</i> DATE: 9/29/66 ELECT. DES: <i>WHS</i> DATE: MECH. DES: <i>WHS</i> DATE: SHEET: NF114 REV. LTR.: C	
DECIMALS	TOLERANCES	FRACTIONS		
.X ± .05 .XX ± .01 .XXX ± .005		± 1/64 ANGLES ± 0° 30'		