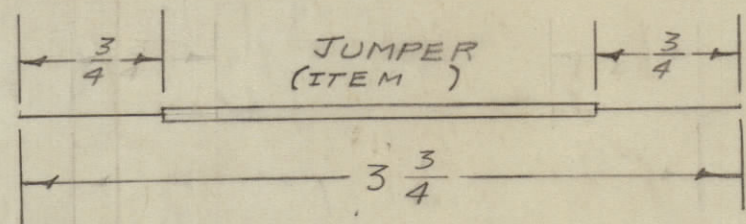
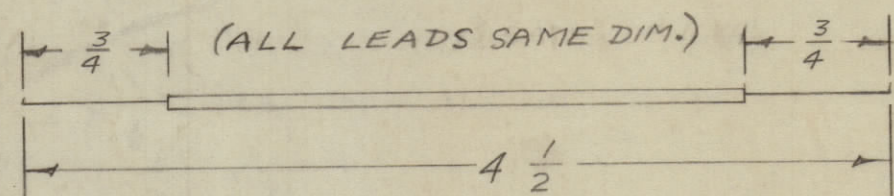
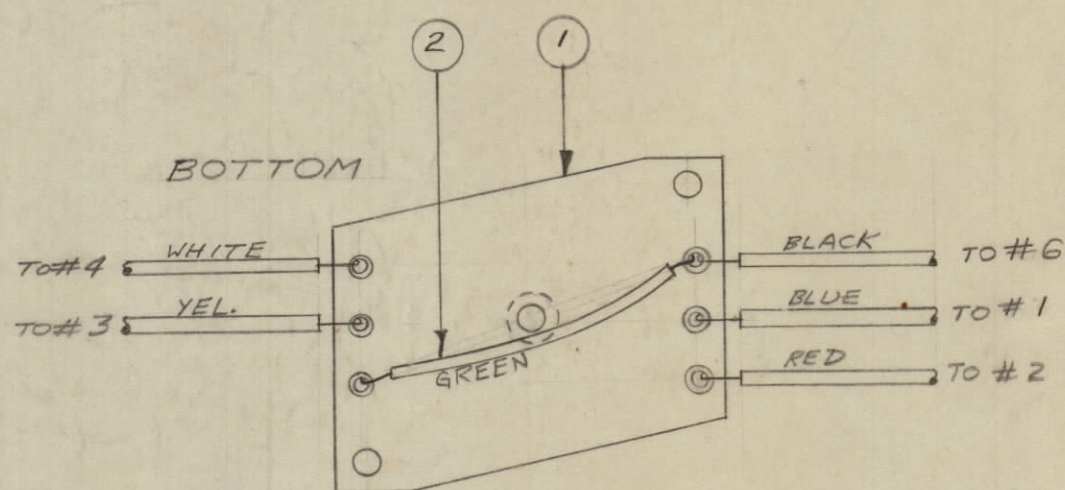
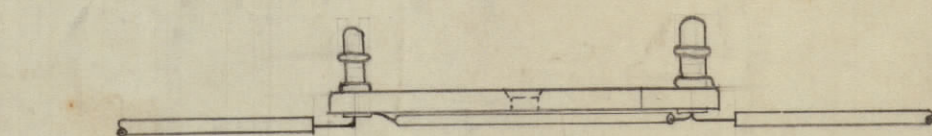
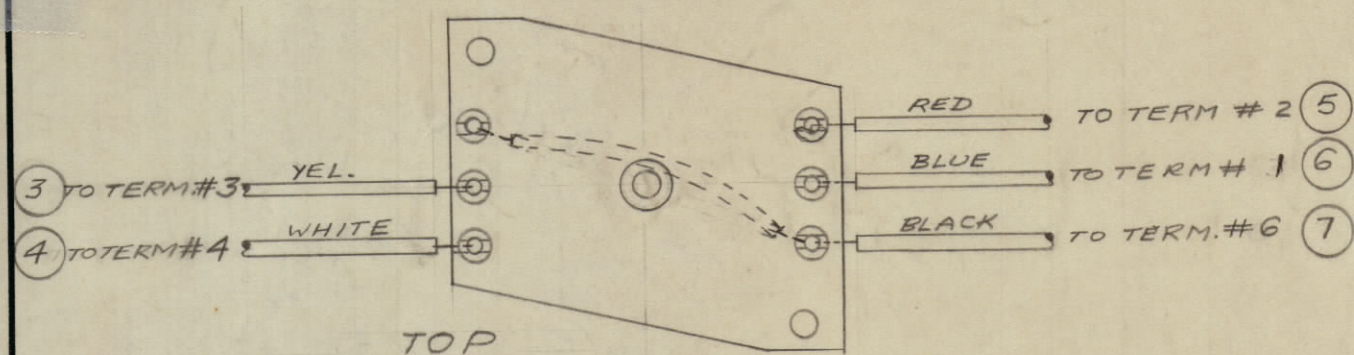


IF IT IS FOUND DESIRABLE TO CHANGE ANY TOLERANCE OR OTHER DETAIL SPECIFIED ON THIS DRAWING NOTIFY THE PURCHASER PROMPTLY.

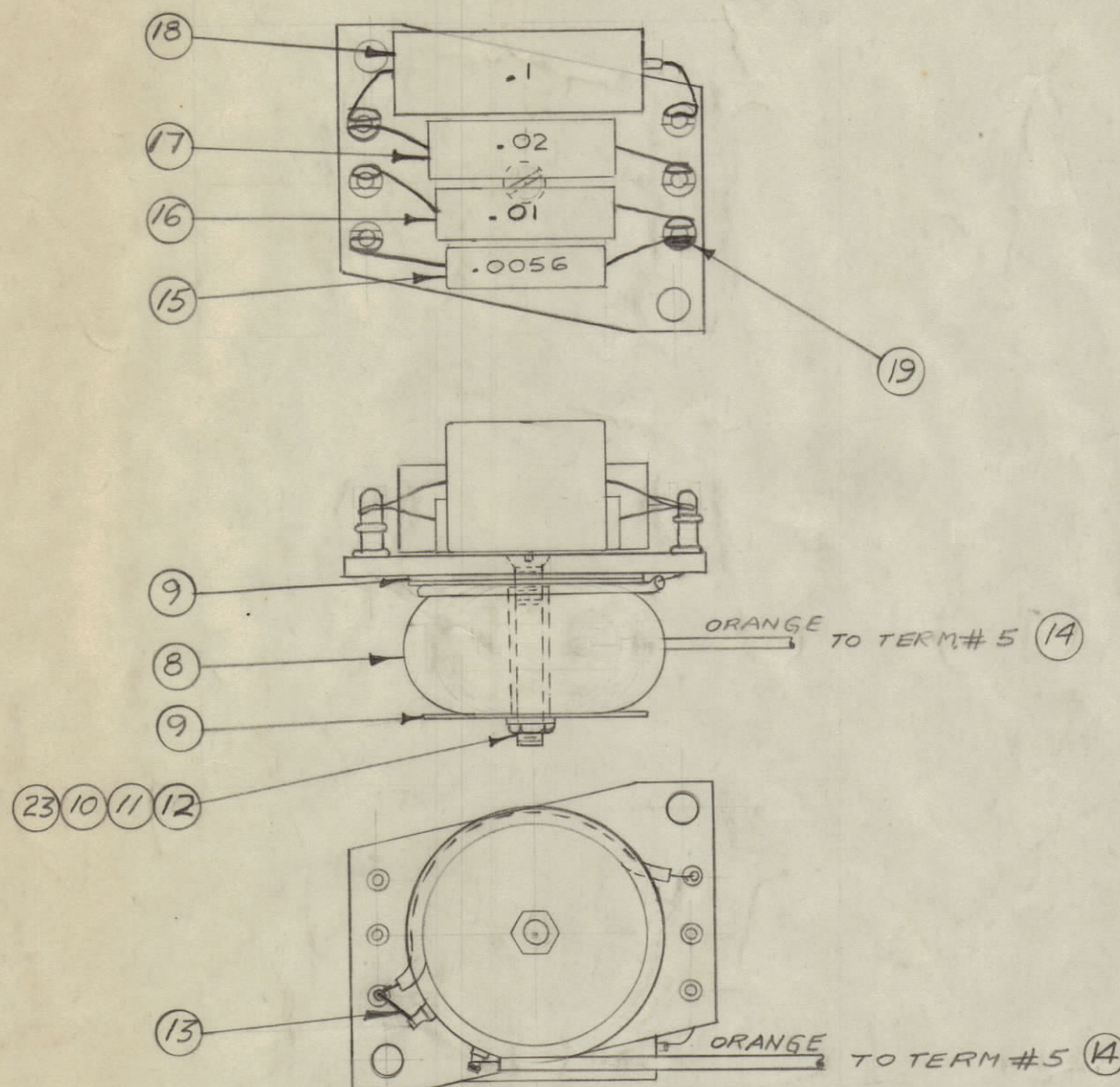
MAXIMUM ALLOWABLE TOLERANCES HAVE BEEN DETERMINED AND DEVIATIONS WILL BE CAUSE FOR REJECTION. REMOVE ALL BURRS AND SHARP EDGES



STEP "A"

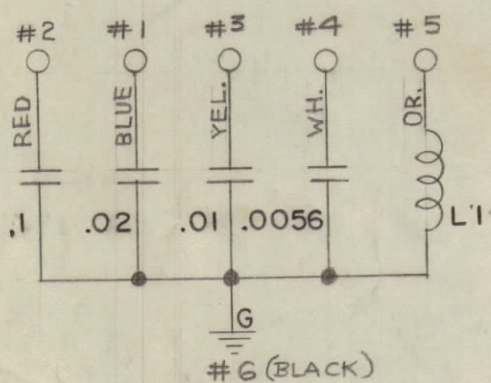
1. ATTACH, BUT DO NOT SOLDER, ALL LEADS & JUMPERS AS SHOWN ABOVE.

NOTE: ALL PREVIOUS LEADS LEFT OFF FOR CLARITY.



STEP "B"

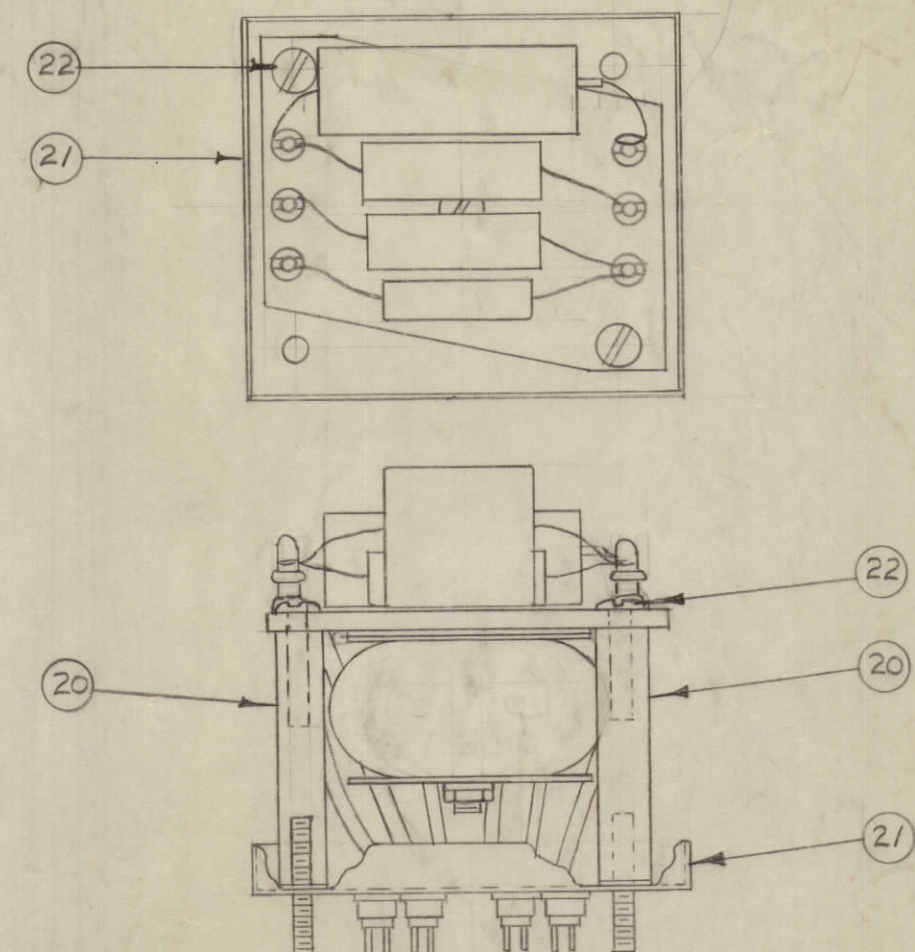
1. FASTEN COIL (ITEM 8) TO BOARD. THEN ATTACH LEAD & JUMPER
 2. BRIDGE ITEMS # 16, 17, & 18 TO A TOLERANCE OF ± 15%
 3. ATTACH COMPONENTS.
 4. SOLDER ALL CONTACTS.



SCHEMATIC DIAGRAM

STEP "D"

1. PLACE CAN BOTTOM ASS'Y. INTO CAN (BX-114)
 2. TEST ACCORDING TO SPEC. NO. S-135. PROCEED ONLY IF TEST IS SATISFACTORY.
 3. SOLDER ALL AROUND BOTTOM EDGE.
 4. POUR COMPOUND (ITEM 24) APPROX. 1/2" FROM TOP.
 5. INSERT TOP COVER AND SOLDER ALL AROUND OUTER EDGE.
 6. PAINT CAN WITH S-115 (SMOOTH GREY ENAMEL) WITH THE EXCEPTION OF STUDS AND TERMINALS.



STEP "C"

1. SCREW SPACERS TO CAN BOTTOM.
 2. FASTEN TERM. BD. TO SPACERS.
 3. SOLDER LEADS TO CORRESPONDING TERMINALS (SEE STEPS A & B FOR WIRING)

NF-101 D

D	1	ITEM 21 WAS BX-114-2	5/13/53	4	JAG	CSG	WJC
C	1	NO. 2 OF STEP "B" ADDED	10/22/53	3	VG	WJC	G.T.O
B	1	COIL POSITION CHANGED	10/19/53	2	VG	WJC	G.T.O
A	1	TERMINALS CHANGED	10/16/53	1	JAG	WJC	WJC

ISSUE	ITEM	CHANGED FROM	DATE	CN. NO.	DRAFTS	CHECKER	ENG. APP.
TOLERANCES		SCALE: $\frac{1}{8}$					
ALL OTHERS	DEC. DIM. ±	DRILL, PUNCH, COMMERCIAL STOCK SIZES AND MANUFACTURERS TOLERANCES ARE NOT INCLUDED.					
	FRAC. DIM. ±						
	ANGULAR DIM. ±						

REQ.	ITEM	PART NO.	DESCRIPTION	SYMBOL
X	24	GL-100	COMPOUND, POTTING	
$\frac{3}{8}$ "	23	PX-100-1-133	INSULATION, SLEEVING (SIZE B)	
2	22	SCBS0632BCB	SCREW, MACH.	
1	21	BX-114	CASE, TRANSFORMER	
2	20	TE-135-21	STAND-OFF, SPACER	
X	19	BS-100	SOLDER, SOFT	
1	18	CN-100-4	CAPACITOR, FIXED .1 - 400 15%	
1	17	CN-100-2	CAPACITOR, FIXED .02 - 400 15%	
1	16	CN-100-1	CAPACITOR, FIXED .01 - 400 15%	
1	15	CM30A562K	CAPACITOR, FIXED, MICA .0056	
4 1/2"	14	SRIR 3/8(7)22-U-33	CABLE, INSULATED OR.	
1 3/8"	13	WL-100-7	BUSS BAR 22 GA.	
1	12	NTH06328CB	NUT, HEX.	
1	11	FW06MRC	WASHER, FLAT	
1	10	SCFS0632BC14	SCREW, MACH.	
3	9	WA-110-1	WASHER, PAPER	
1	8	CL-106-7	TORROIDAL COIL 1h.	
4 1/2"	7	SRIR 3/8(7)22-U-00	CABLE, INSULATED BLK.	
4 1/2"	6	SRIR 3/8(7)22-U-66	CABLE, INSULATED BLUE	
4 1/2"	5	SRIR 3/8(7)22-U-22	CABLE, INSULATED RED	
4 1/2"	4	SRIR 3/8(7)22-U-99	CABLE, INSULATED WH.	
4 1/2"	3	SRIR 3/8(7)22-U-44	CABLE, INSULATED YEL.	
3 3/4"	2	SRIR 3/8(7)22-U-55	CABLE, INSULATED GREEN	
1	1	A-561	TERMINAL BOARD ASS'Y.	

REQ.	ITEM	PART NO.	DESCRIPTION	SYMBOL
THE TECHNICAL MATERIEL CORP. MAMARONECK, NEW YORK				
NETWORK, TONE SELECTIVITY				
MATERIAL		WEIGHT PER PC.		
TYPE & TEMPER		16 10-9-53	G.T.O	WJC
HEAT TREAT. SPEC.		7B.	G.T.O	WJC
FINISH & SPEC. NO.		CHECKED	FINAL APPROVAL	
			NF-101 D	

RSC-1 (A, B, C, D, E)	170	10-9-53
MODEL	PROJECT NO.	ASS'Y. NO.
USED ON		