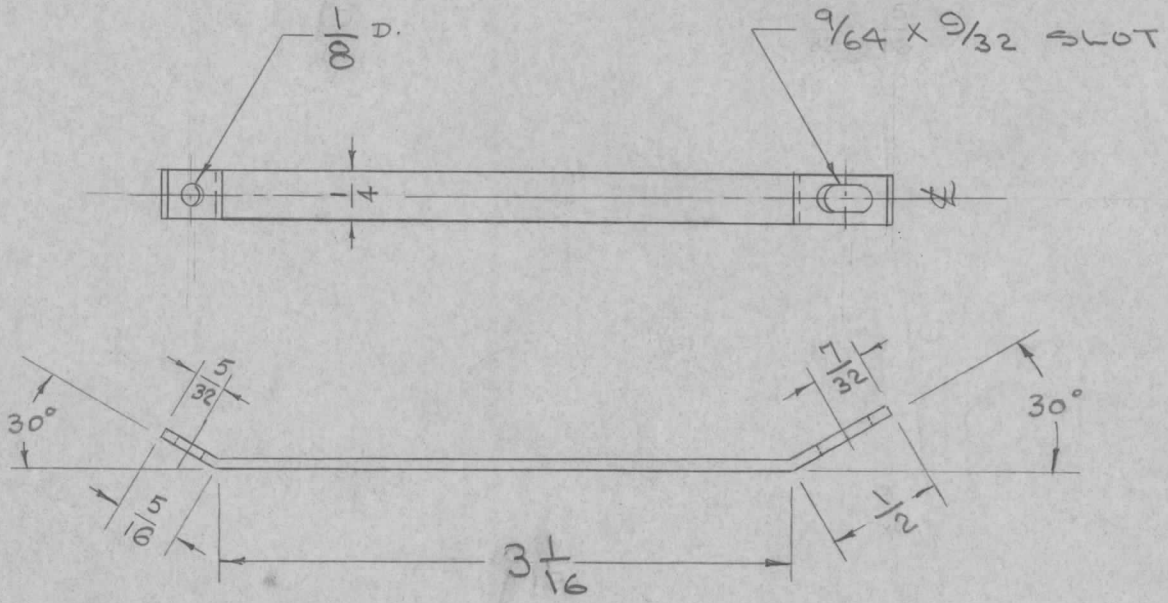


REQ. PER UNIT	USED ON		
	MODEL	ASS'Y. NO.	DATE
1	RTF		2-23-56
1	PMO-1,2		5-16-56
1	VOX-1,2		11
1	RTF-2	M/O	11-10-58
1	CHG-2-OVEN		8-11-61

MS-900 B



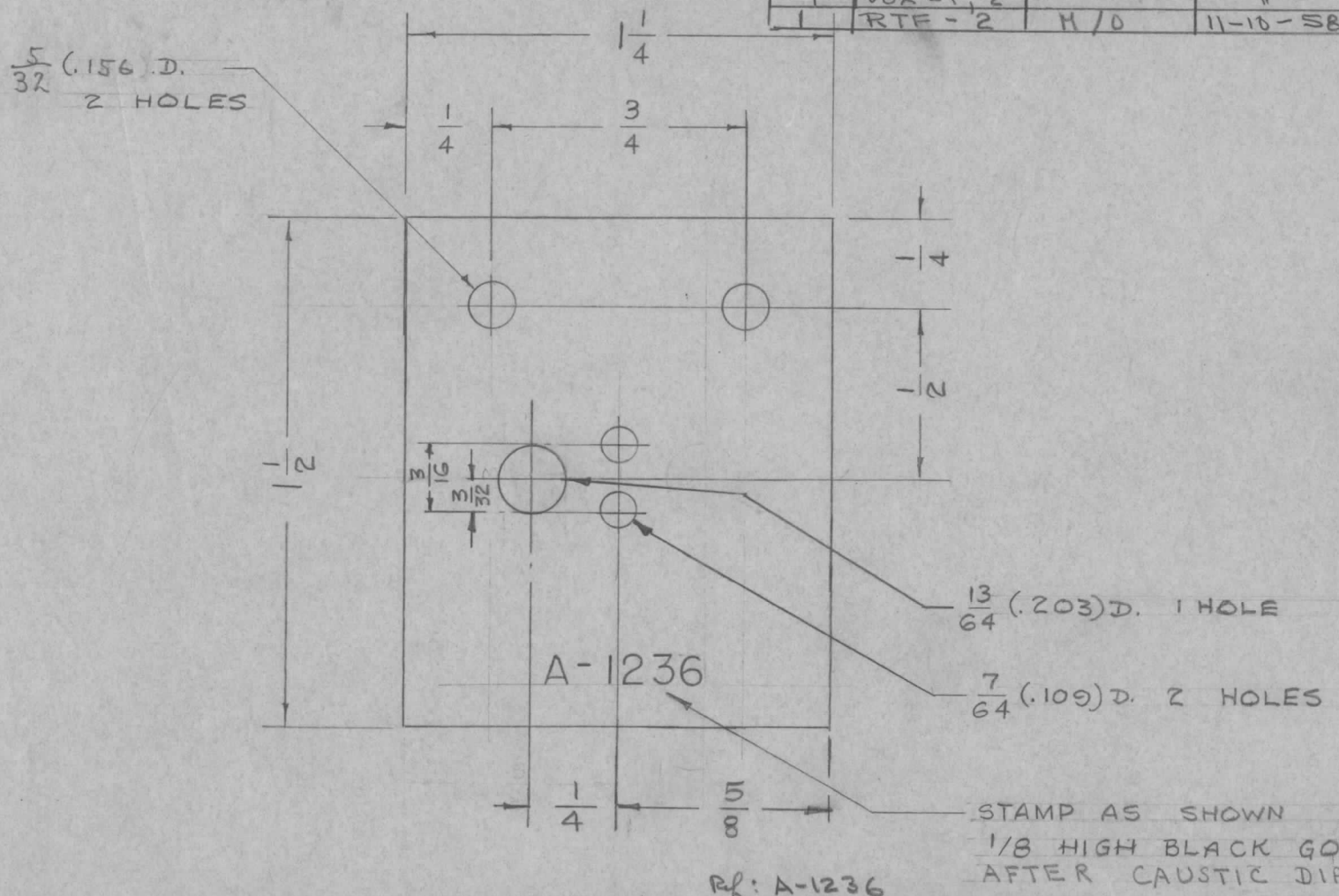
BLANK SIZE
 $3 \frac{1}{16} \times \frac{1}{4}$

REF - A-1236

ISSUE	ITEM	CHANGED FROM	DATE	CH. NO.	DRAFTS	CHECKER	ENG. APP.	REQ. ITEM	PART NO.	DESCRIPTION	SYMBOL								
B	1	$3 \frac{1}{16}$ was $2 \frac{9}{16}$ VBD was $\frac{9}{64}D$	2/15/57	2	HA	HA	MO	.012		THE TECHNICAL MATERIEL CORP. MAMARONECK, NEW YORK									
A	4	SLOTS were $\frac{5}{32} \times \frac{5}{16}$		1				STOCK SIZE											
	3	.012 was .021						PHOS. BRONZE		SPRING, STRAP,									
	2	$2 \frac{9}{16}$ was $2 \frac{5}{16}$	3/20/51	1	B	HA		MATERIAL		THERMOSTAT									
	1	$\frac{1}{2}$ was $\frac{9}{16}$ $\frac{7}{32}$ was $\frac{1}{4}$						GRADE A	-H	B 2-23-56									
TOLERANCES			SCALE:					TYPE & TEMPER		HEAT TREAT. SPEC.		DRAWN		CHECKED		FINAL APPROVAL			
DEC. DIM. \pm			MAXIMUM ALLOWABLE TOLERANCES HAVE BEEN DETERMINED AND ANY DEVIATIONS WILL BE CAUSE FOR REJECTION. REMOVE ALL BURRS AND SHARP EDGES					S-105		CAD. PLATE									
FRAC. DIM. $\pm \frac{1}{32}$								FINISH & SPEC. NO.		ELEC. DES. APP.		MECH. DES. APP.							
ANGULAR DIM. $\pm 2^\circ$																			

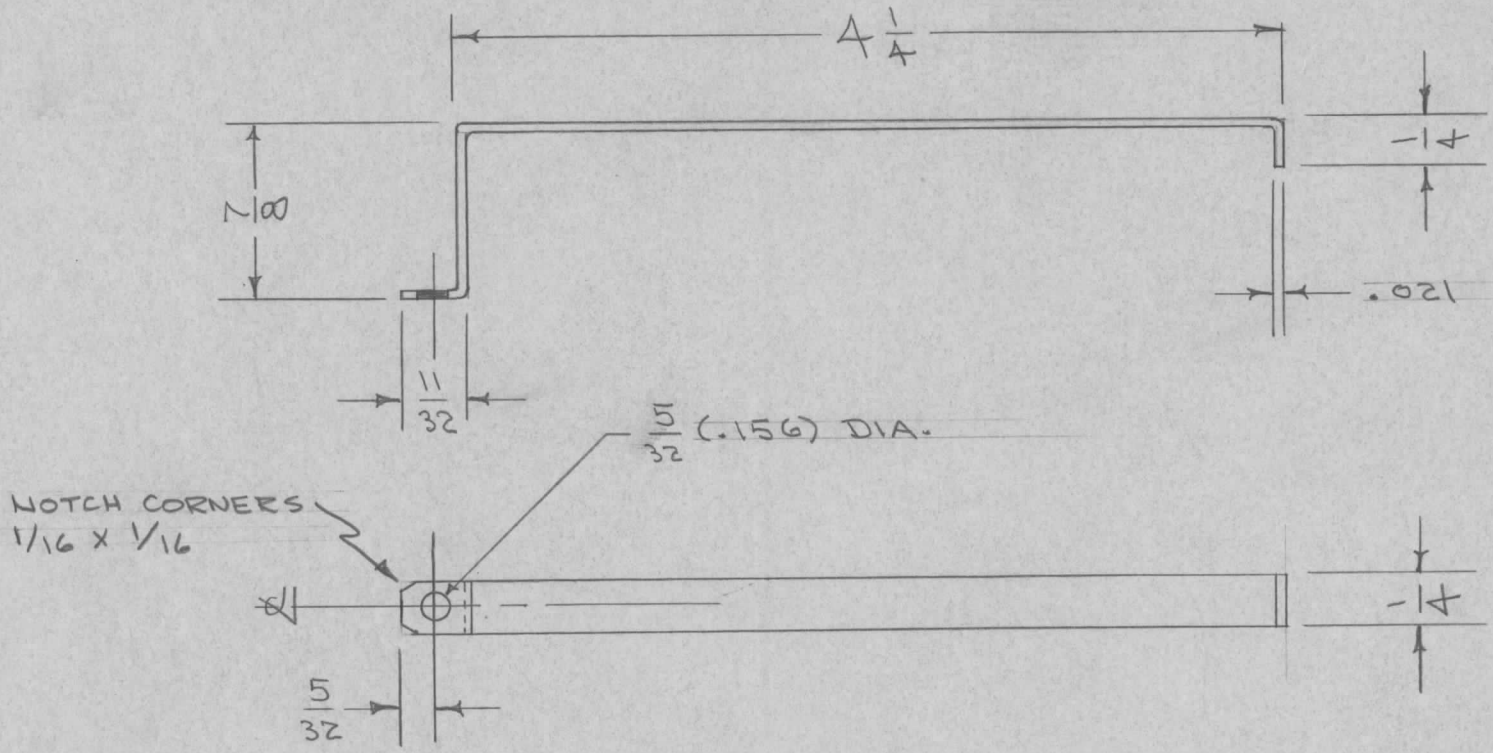
REQ. PER UNIT	USED ON		
	MODEL	ASS'Y. NO.	DATE
1	R.T.F.		2-25-56
1	PMD-1, 2		5-16-56
1	VOX-1, 2		"
1	R.T.F.-2	H/O	11-10-58

MS-903 B



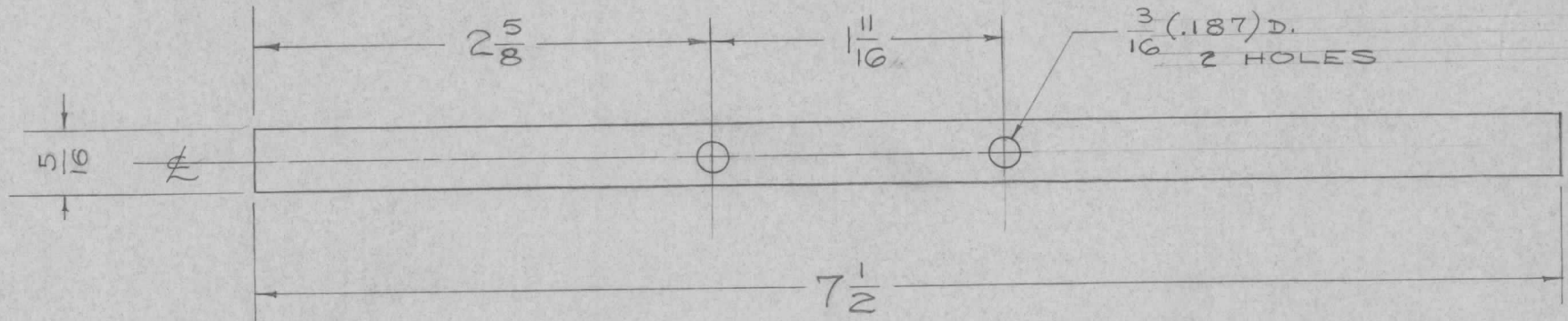
ISSUE	ITEM	CHANGED FROM	DATE	CH. NO.	DRAFTS	CHECKER	ENG. APP.	REQ. ITEM	PART NO.	DESCRIPTION	SYMBOL		
									.051	THE TECHNICAL MATERIEL CORP. MAMARONECK, NEW YORK	FACE PLATE METALLIC THERMOSTAT M/O		
B	1	5404-IRIDITE WAS S101-CAUSTIC DIP	12-7 59	1001	P	EMN			STOCK SIZE				
A	1	13/64 D. HOLE REVERSED WAS ON RIGHT SIDE	2/15/57	1	16	JAC	CMO		ALUMINUM				
TOLERANCES								MATERIAL					
DEC. DIM. ±			SCALE:					5052-H32	—	11	2-25-56	WDC	
FRAC. DIM. ± 1/64			MAXIMUM ALLOWABLE TOLERANCES HAVE BEEN DETERMINED AND ANY DEVIATIONS WILL BE CAUSE FOR REJECTION. REMOVE ALL BURRS AND SHARP EDGES					TYPE & TEMPER		HEAT TREAT. SPEC.	DRAWN	CHECKED	FINAL APPROVAL
ANGULAR DIM. ±								S404 IRIDITE					
								FINISH & SPEC. NO.		ELEC. DES. APP.	MECH. DES. APP.		

REQ. PER UNIT	USED ON			MS-905	A
	MODEL	ASS'Y. NO.	DATE		
1	RTF		3-5-56		



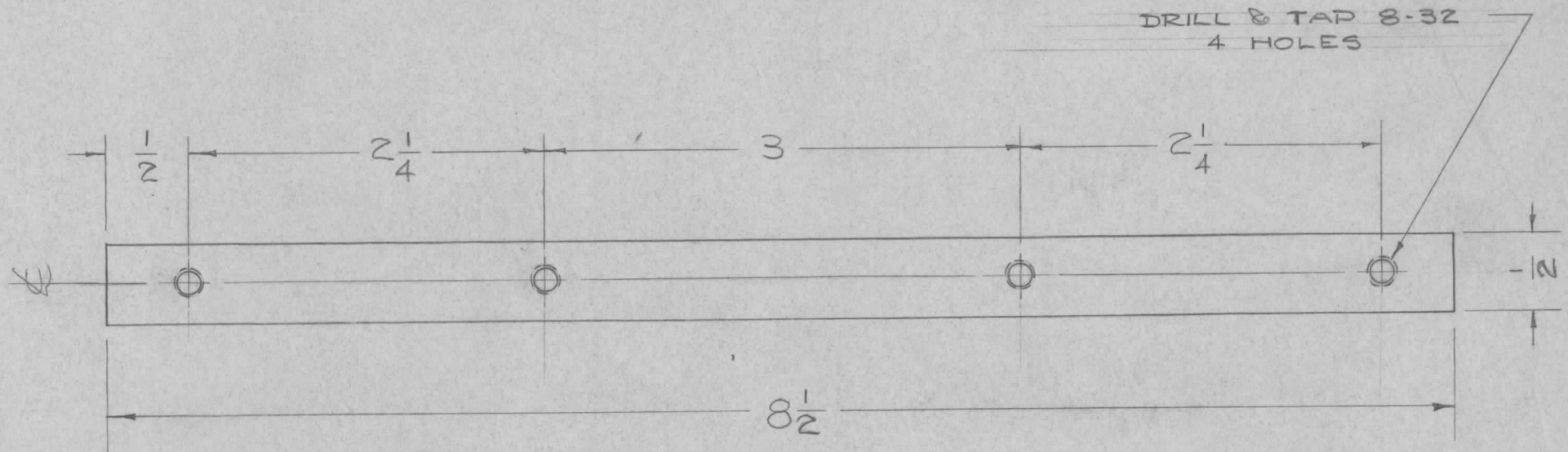
ISSUE	ITEM	CHANGED FROM	DATE	CH. NO.	DRAFTS	CHECKER	ENG. APP.	REQ. ITEM	PART NO.	DESCRIPTION	SYMBOL	
								.021		THE TECHNICAL MATERIEL CORP. MAMARONECK, NEW YORK	STRAP, CONNECTING MULT.	
								STOCK SIZE				
								COPPER				
A	1	CORNERS NOTCHED	12/13/54	1	16	FAIRBANKS	AK					
TOLERANCES			SCALE:					COMMERCIAL SOFT		CDD. 3/5/56	FAIRBANKS	WDR
DEC. DIM. \pm FRAC. DIM. $\pm \frac{1}{64}$ ANGULAR DIM. \pm			MAXIMUM ALLOWABLE TOLERANCES HAVE BEEN DETERMINED AND ANY DEVIATIONS WILL BE CAUSE FOR REJECTION. REMOVE ALL BURRS AND SHARP EDGES					TYPE & TEMPER SILVER PLATE .0002	HEAT TREAT. SPEC.	DRAWN	CHECKED	FINAL APPROVAL
								FINISH & SPEC. NO.		ELEC. DES. APP.	MECH. DES. APP.	MS-905 A

REQ. PER UNIT	USED ON			MS-914	B
	MODEL	ASS'Y. NO.	DATE		
1	RTF		3-29-56		



ISSUE	ITEM	CHANGED FROM	DATE	CH. NO.	DRAFTS	CHECKER	ENG. APP.	REQ. ITEM	PART NO.	DESCRIPTION	SYMBOL				
B	1	$5/16$ WAS $3/8$	3-12-57	2	SC.	VB	<i>[Signature]</i>		.019	THE TECHNICAL MATERIEL CORP. MAMARONECK. NEW YORK	CONNECTOR STRAP TS-125				
A	1	WAS .022 THK.	3/1/56	1	ESD	AM	<i>[Signature]</i>		SOFT COPPER			P/A	GPT-750		
TOLERANCES								MATERIAL		DRAWN		CHECKED		FINAL APPROVAL	
DEC. DIM. \pm			SCALE:					TYPE & TEMPER		HEAT TREAT. SPEC.		ELEC. DES. APP.		MECH. DES. APP.	
FRAC. DIM. \pm $1/64$			MAXIMUM ALLOWABLE TOLERANCES HAVE BEEN DETERMINED AND ANY DEVIATIONS WILL BE CAUSE FOR REJECTION.					5-245 SILVER PLATE		.0005		<i>[Signature]</i>		MS-914 B	
ANGULAR DIM. \pm			REMOVE ALL BURRS AND SHARP EDGES												

REQ. PER UNIT	E-500-P	USED ON		MS-915	A
	MODEL	ASS'Y. NO.	DATE		
2	A-959		3-30-56		



ISSUE	ITEM	CHANGED FROM	DATE	CH. NO.	DRAFTS	CHECKER	ENG. APP.	REQ. ITEM	PART NO.	DESCRIPTION	SYMBOL
										THE TECHNICAL MATERIEL CORP. MAMARONECK, NEW YORK	
									$\frac{3}{16}$ STOCK SIZE	PANEL MOUNTING PLATE	
A	2	FINISH DELETED	4/6/57	1	SC.	H. De	Al		BRASS	A-959	
	1	MATERIAL WAS ALUM.							MATERIAL		
								HALF HARD	#	B 3-3046	
								TYPE & TEMPER	HEAT TREAT. SPEC.	DRAWN	CHECKED
											FINAL APPROVAL
											MS-915
											A

DEC. DIM. \pm
 FRAC. DIM. $\pm \frac{1}{64}$
 ANGULAR DIM. \pm

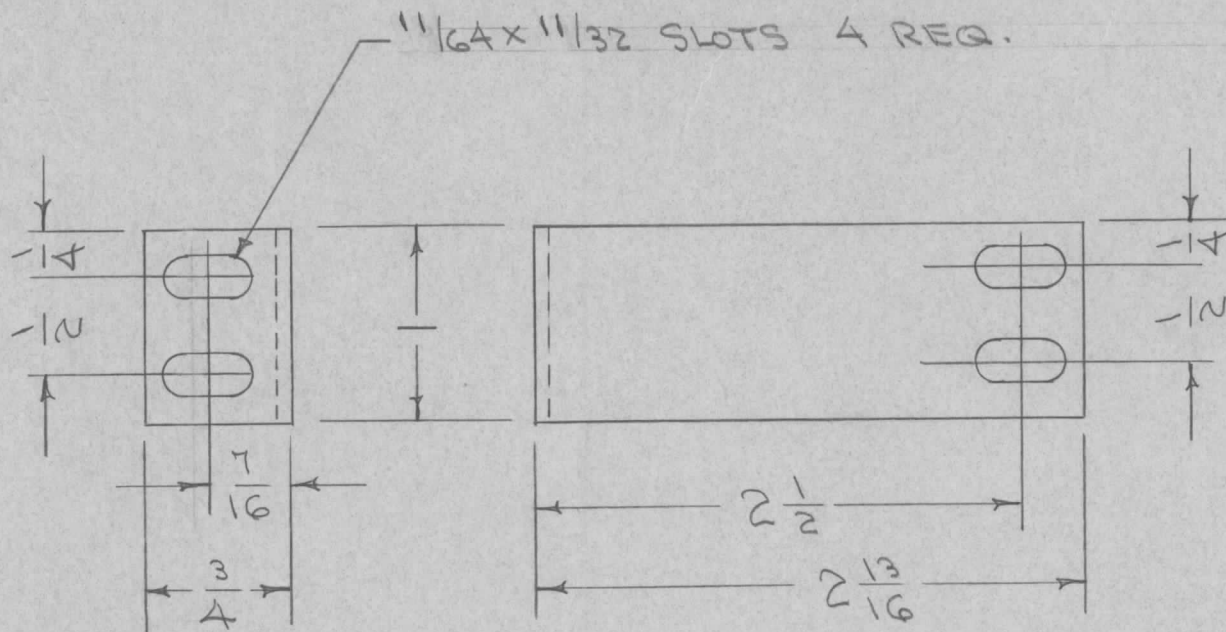
SCALE:
 MAXIMUM ALLOWABLE TOLERANCES HAVE BEEN DETERMINED AND ANY DEVIATIONS WILL BE CAUSE FOR REJECTION.
 REMOVE ALL BURRS AND SHARP EDGES

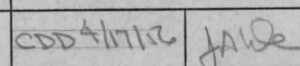
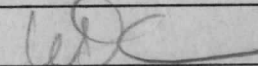
FINISH & SPEC. NO.

ELEC. DES. APP. MECH. DES. APP.

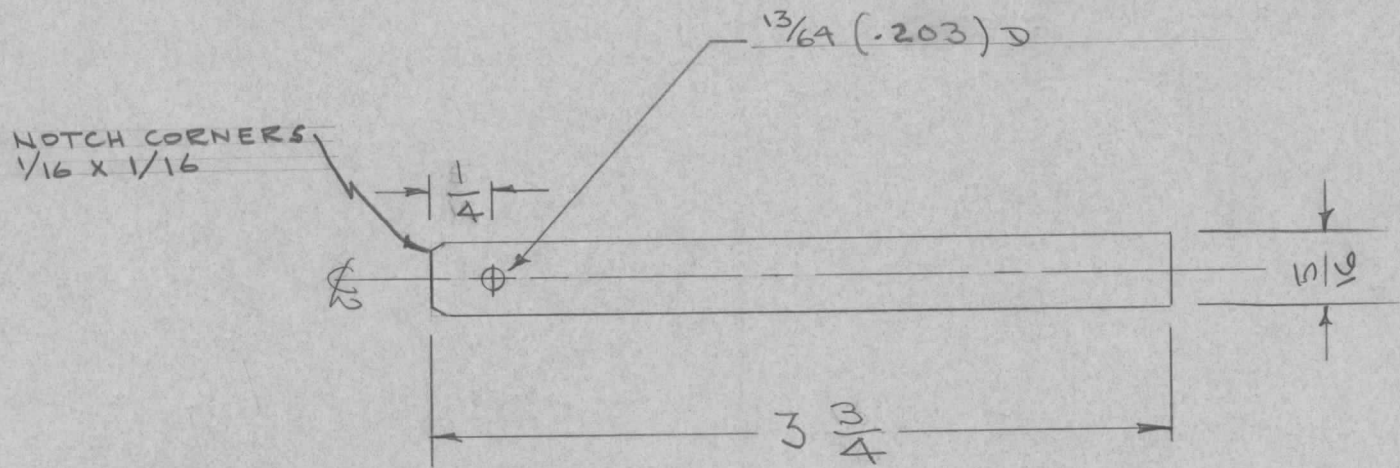
REQ. PER UNIT	USED ON		
	MODEL	ASS'Y. NO.	DATE
1	RTF		4-17-58
1	RTF-2	M/D	11-10-58

MS-918 A



ISSUE	ITEM	CHANGED FROM	DATE	CH. NO.	DRAFTS	CHECKER	ENG. APP.	REQ. ITEM	PART NO.	DESCRIPTION	SYMBOL	
								.081		THE TECHNICAL MATERIEL CORP. MAMARONECK, NEW YORK		
								STOCK SIZE				
								ALUMINUM		SUPPORT, LEFT SIDE,		
								MATERIAL		OVEN REAR	GPT-750	
A	1	S404-IRIDITE WAS S101-CAUSTIC DIP	12-7 59	1001	P		EMN	5052 H32		 		
TOLERANCES			SCALE:					TYPE & TEMPER	HEAT TREAT. SPEC.	DRAWN	CHECKED	FINAL APPROVAL
DEC. DIM. ±			MAXIMUM ALLOWABLE TOLERANCES HAVE BEEN DETERMINED AND ANY DEVIATIONS WILL BE CAUSE FOR REJECTION. REMOVE ALL BURRS AND SHARP EDGES					S404-IRIDITE				MS-918 A
FRAC. DIM. ± 1/64												
ANGULAR DIM. ±												

REQ. PER UNIT	USED ON			MS-920	A
	MODEL	ASS'Y. NO.	DATE		
1	RTF		4/13/56		

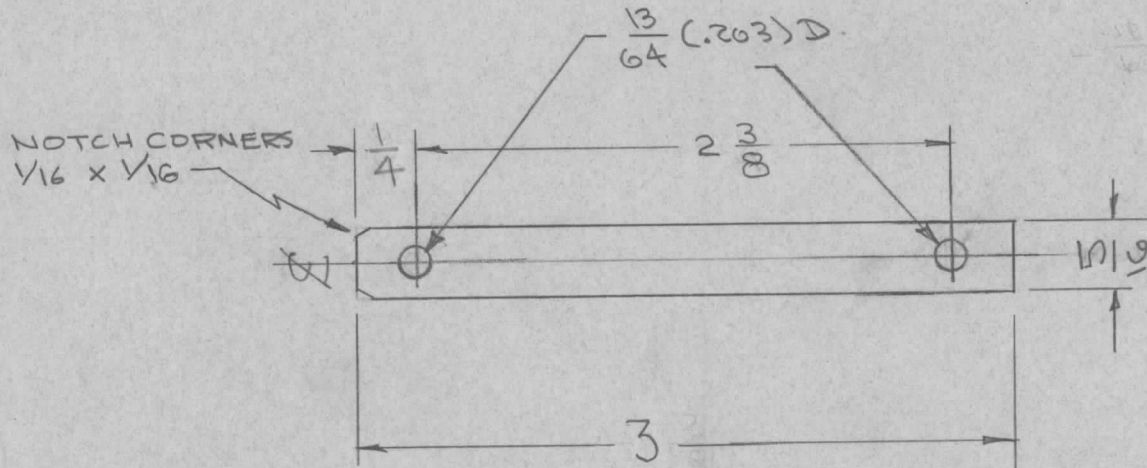


UNLESS OTHERWISE SPECIFIED DIMENSIONS ARE IN INCHES AND INCLUDE CHEMICALLY APPLIED OR PLATED FINISHES		
DECIMALS	TOLERANCES	FRACTIONS
.X ± .05		± 1/64
.XX ± .01		ANGLES
.XXX ± .005		± 0° 30'

CUT HERE
GUARANTEED
2-66

REQ.	ITEM	PART NO.	DESCRIPTION				SYMBOL
		.019	THE TECHNICAL MATERIEL CORP. MAMARONECK, NEW YORK				
		STOCK SIZE	CONNECTOR, CB-117 TO SW-166				
A	2	3 3/4 WAS 3 13/16	P/A RTF GPT-750				
	1	CORNER NOTCHED					
ISSUE	ITEM	CHANGED FROM	DATE	CH. NO.	DRAFTS	CHECKER	ENG. APP.
		TOLERANCES	SCALE:				
		DEC. DIM. ±	MAXIMUM ALLOWABLE TOLERANCES HAVE BEEN DETERMINED AND ANY DEVIATIONS WILL BE CAUSE FOR REJECTION.				
		FRAC. DIM. ±	REMOVE ALL BURRS AND SHARP EDGES				
		ANGULAR DIM. ±					
		SOFT	DRAWN		CHECKED	FINAL APPROVAL	
		TYPE & TEMPER	HEAT TREAT. SPEC.				
		SILVER PLATE					
		.0005					
		FINISH & SPEC. NO.	ELEC. DES. APP.		MECH. DES. APP.		
					MS-920		A

REQ. PER UNIT	USED ON			MS-921	B
	MODEL	ASS'Y. NO.	DATE		
1	RTF		4/13/56		

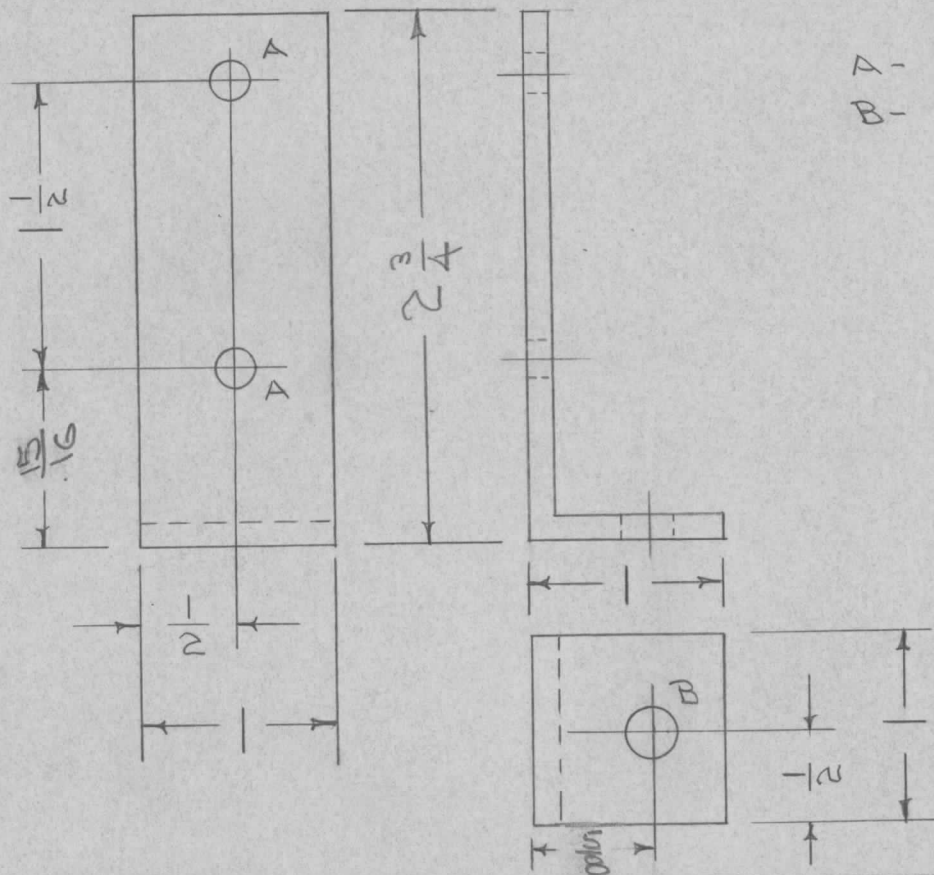


ISSUE	ITEM	CHANGED FROM	DATE	CH. NO.	DRAFTS	CHECKER	ENG. APP.	REQ. ITEM	PART NO.	DESCRIPTION	SYMBOL		
									.013	THE TECHNICAL MATERIEL CORP. MAMARONECK. NEW YORK			
B	1	1/4 WAS 5/16 CORNERS NOTCHED	12/13/56	2	16	JMR	AM		STOCK SIZE		CONNECTOR, MULT. TO P/A		
A	2	DIMENSIONS CHANGED	10/9/56	1	000	JMR	AM		COPPER	RTF	GPT-750		
	1	HOLE SIZES CHANGED							MATERIAL				
									SOFT	JMR 4/13/56	JMR	WDC	
									TYPE & TEMPER	HEAT TREAT. SPEC.	DRAWN	CHECKED	FINAL APPROVAL
									SILVER PLATE .0005			WDC	MS-921 B
									FINISH & SPEC. NO.	ELEC. DES. APP.	MECH. DES. APP.		

DEC. DIM. ±
 FRAC. DIM. ± 1/64
 ANGULAR DIM. ±

SCALE:
 MAXIMUM ALLOWABLE TOLERANCES HAVE BEEN DETERMINED AND ANY DEVIATIONS WILL BE CAUSE FOR REJECTION.
 REMOVE ALL BURRS AND SHARP EDGES

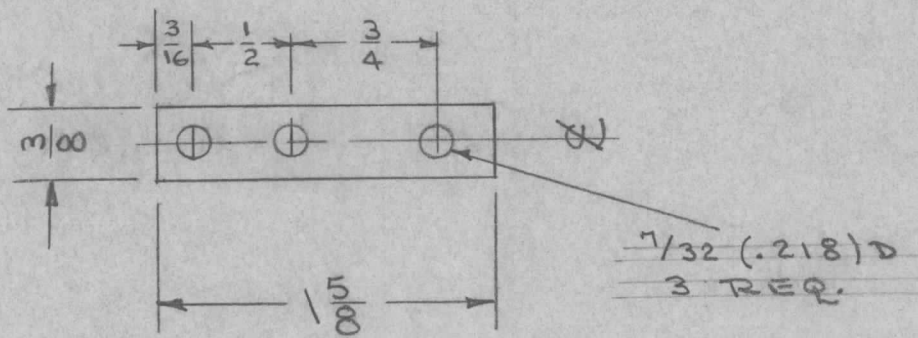
REQ. PER UNIT	E-500-P	USED ON		MS-928	A
	MODEL	ASS'Y. NO.	DATE		
2	A 959		4-20-56		



A - 3/16 (.187) DIA. 2 REQ.
 B - 1/4 (.250) " 1 "

REQ. ITEM	PART NO.	DESCRIPTION	SYMBOL
	.125 THK.	THE TECHNICAL MATERIEL CORP. MAMARONECK, NEW YORK	BRACKET, XFK SUPPORT A959
	STOCK SIZE		
	ALUMINIUM		
	MATERIAL		
A 1	5404 - IRIDITE WAS S101 - CAUSTIC DIP	12-7 59	1001 P 16 EMN
ISSUE ITEM	CHANGED FROM	DATE	CH. NO. DRAFTS CHECKER ENG. APP.
TOLERANCES		SCALE:	
DEC. DIM. ±		MAXIMUM ALLOWABLE TOLERANCES HAVE BEEN DETERMINED AND ANY DEVIATIONS WILL BE CAUSE FOR REJECTION.	
FRAC. DIM. ± 1/64		REMOVE ALL BURRS AND SHARP EDGES	
ANGULAR DIM. ±			
6063 T5		ELEC. DES. APP. MECH. DES. APP.	
TYPE & TEMPER		HEAT TREAT. SPEC.	
S404 IRIDITE		DRAWN CHECKED FINAL APPROVAL	
FINISH & SPEC. NO.		MS-928 A	

REQ. PER UNIT	USED ON			MS-930
	MODEL	ASS'Y. NO.	DATE	
1	RTF	P/A	4/27/56	
	RTF-2			



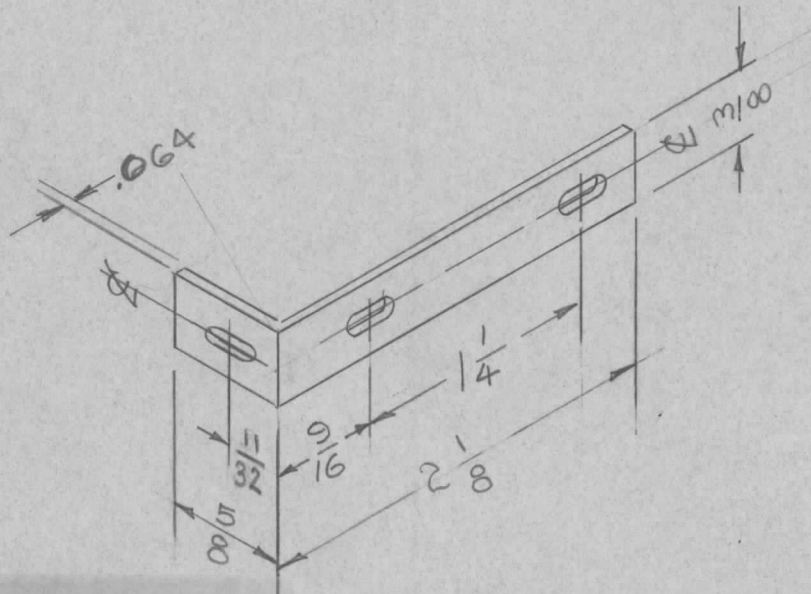
UNLESS OTHERWISE SPECIFIED
DIMENSIONS ARE IN INCHES AND INCLUDE
CHEMICALLY APPLIED OR PLATED FINISHES

DECIMALS	TOLERANCES	FRACTIONS
.X ± .05		± 1/64
.XX ± .01		ANGLES
.XXX ± .005		± 0° 30'

CUT HERE
GUARANTEED
2-66

REQ.	ITEM	PART NO.	DESCRIPTION			SYMBOL		
		.021	THE TECHNICAL MATERIEL CORP.					
		STOCK SIZE	MAMARONECK. NEW YORK					
		COPPER	JUMPER, T101					
		MATERIAL	P/A	RTF	GPT-750			
ISSUE	ITEM	CHANGED FROM	DATE	CH. NO.	DRAFTS	CHECKER	ENG. APP.	
TOLERANCES			SCALE:					
DEC. DIM. ±			MAXIMUM ALLOWABLE TOLERANCES HAVE BEEN DETERMINED AND ANY DEVIATIONS WILL BE CAUSE FOR REJECTION.					
FRAC. DIM. ±			REMOVE ALL BURRS AND SHARP EDGES					
ANGULAR DIM. ±			TYPE & TEMPER		HEAT TREAT. SPEC.	DRAWN	CHECKED	FINAL APPROVAL
			SILVER PLATE .0003					MS-930
			FINISH & SPEC. NO.		ELEC. DES. APP.	MECH. DES. APP.		

REQ. PER UNIT	USED ON			MS-931	A
	MODEL	ASS'Y. NO.	DATE		
1	RTF		4/30/56		
1	RTF-2	MULT	11-20-58		



9/64 x 9/32 SLOTS - 3 REQ.

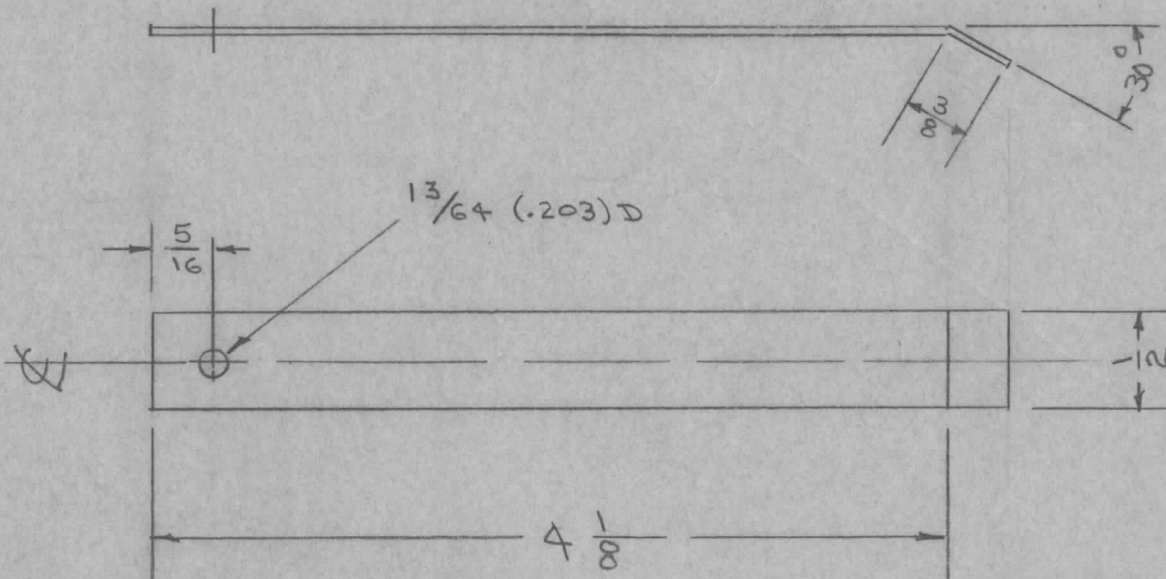
UNLESS OTHERWISE SPECIFIED DIMENSIONS ARE IN INCHES AND INCLUDE CHEMICALLY APPLIED OR PLATED FINISHES		
DECIMALS	TOLERANCES	FRACTIONS
.X ± .05		± 1/64
.XX ± .01		ANGLES
.XXX ± .005		± 0° 30'

CUT HERE
GUARANTEED
2-66

REQ.	ITEM	PART NO.	DESCRIPTION				SYMBOL	
		.064	THE TECHNICAL MATERIEL CORP. MAMARONECK, NEW YORK					
		STOCK SIZE	SUPPORT, L-209					
A	1	ALUMINUM	MULT. GPT-750					
		MATERIAL						
ISSUE	ITEM	CHANGED FROM	DATE	CH. NO.	DRAFTS	CHECKER	ENG. APP.	
		S404 - IRIDITE WAS S101 - CAUSTIC DIP	12-8 59	1001	P		EMN	
TOLERANCES			SCALE:					
DEC. DIM. ±			MAXIMUM ALLOWABLE TOLERANCES HAVE BEEN DETERMINED AND ANY DEVIATIONS WILL BE CAUSE FOR REJECTION.					
FRAC. DIM. ±			REMOVE ALL BURRS AND SHARP EDGES					
ANGULAR DIM. ±								
		5052-H32	TYPE & TEMPER		HEAT TREAT. SPEC.	DRAWN	CHECKED	FINAL APPROVAL
		S404-IRIDITE						
		FINISH & SPEC. NO.	ELEC. DES. APP.	MECH. DES. APP.		MS-931		A

REQ. PER UNIT	USED ON		
	MODEL	ASS'Y. NO.	DATE
1	RAC-7A	A-1354	10-30-56
1	RAC-3	A-1463	10-13-57
1	BAC-1		
1	BAC-1-S-20		

MS-933



UNLESS OTHERWISE SPECIFIED
DIMENSIONS ARE IN INCHES AND INCLUDE
CHEMICALLY APPLIED OR PLATED FINISHES

DECIMALS	TOLERANCES	FRACTIONS
.X ± .05		± 1/64
.XX ± .01		ANGLES
.XXX ± .005		± 0° 30'

CUT HERE
GUARANTEED
2-66

REQ.	ITEM	PART NO.	DESCRIPTION	SYMBOL											
		.025	THE TECHNICAL MATERIEL CORP. MAMARONECK, NEW YORK	HOLDER, DESSICANT											
		STOCK SIZE													
		PHOSPHOR BRONZE													
		MATERIAL													
ISSUE	ITEM	CHANGED FROM	DATE	CH. NO.	DRAFTS	CHECKER	ENG. APP.	GRADE A SPRING	HEAT TREAT. SPEC.	DRAWN	CHECKED	FINAL APPROVAL			
TOLERANCES			SCALE:						TYPE & TEMPER	CADMIUM PLATED					
DEC. DIM. ±			MAXIMUM ALLOWABLE TOLERANCES HAVE BEEN DETERMINED AND ANY DEVIATIONS WILL BE CAUSE FOR REJECTION. REMOVE ALL BURRS AND SHARP EDGES						.0002						
FRAC. DIM. ±									FINISH & SPEC. NO.		ELEC. DES. APP.	MECH. DES. APP.			
ANGULAR DIM. ±															

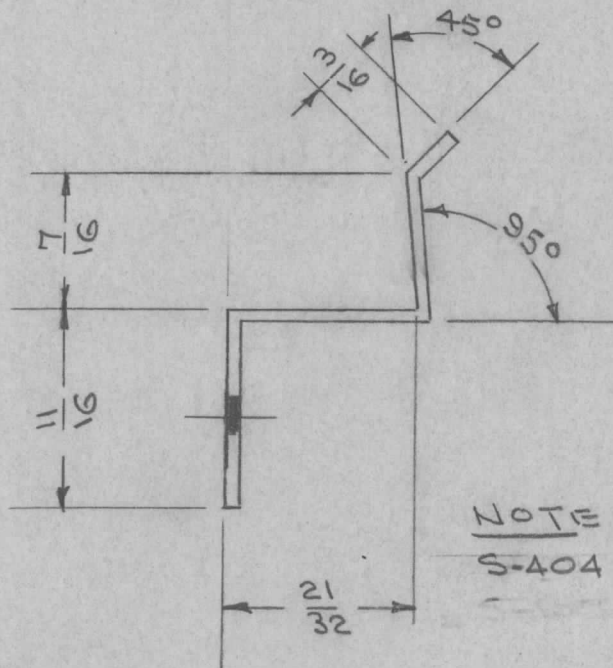
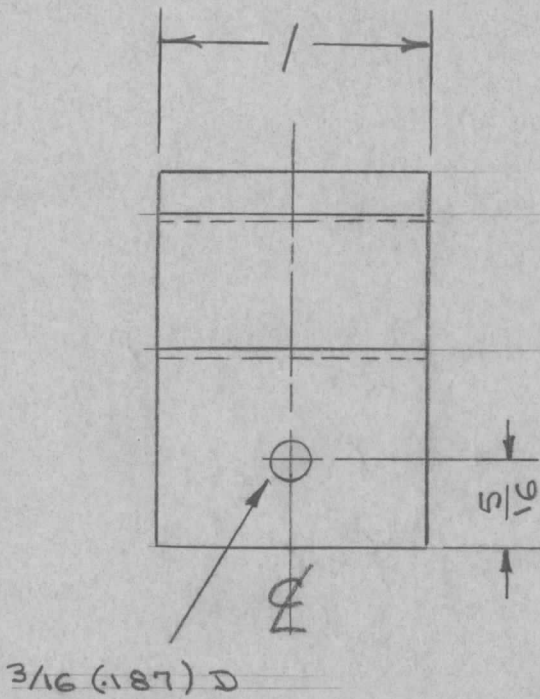
MS-933

IF IT IS FOUND DESIRABLE TO CHANGE ANY TOLERANCE OR OTHER DETAIL SPECIFIED ON THIS DRAWING NOTIFY THE PURCHASER PROMPTLY.

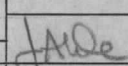
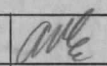
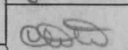
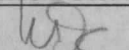
MS-944 | A

MAXIMUM ALLOWABLE TOLERANCES HAVE BEEN DETERMINED AND DEVIATIONS WILL BE CAUSE FOR REJECTION. REMOVE ALL BURRS AND SHARP EDGES

REQ PER UNIT	USED ON			
	MODEL	PROJECT NO.	ASS'Y. NO.	DATE
2	A-1303	271		5/17/56



NOTE:
S-404 IRIDITE

REQ.	ITEM	PART NO.	DESCRIPTION	SYMBOL
		.064	THE TECHNICAL MATERIEL CORP. MAMARONECK, NEW YORK	
		STOCK SIZE		
		ALUMINUM	CLIP, PANEL FASTENING	
		MATERIAL		
		WEIGHT PER PC.	P/O A-1303	
		5052-H32		
		TYPE & TEMPER		
		HEAT TREAT. SPEC.	DRAWN	ELEC. DES. APP.
		FINISH & SPEC. NO.		
			CHECKED	FINAL APPROVAL
				MS-944 A

A	1	S404 IRIDITE WAS S101 CAUSTIC DIP	12-8 59	1001	EP	EMN	
ISSUE	ITEM	CHANGED FROM	DATE	CN. NO.	DRAFTS	CHECKER	ENG. APP.
TOLERANCES			SCALE				
ALL OTHERS	DEC. DIM. \pm FRAC. DIM. $\pm 1/64$ ANGULAR DIM. \pm		DRILL, PUNCH, COMMERCIAL STOCK SIZES AND MANUFACTURERS TOLERANCES ARE NOT INCLUDED.				

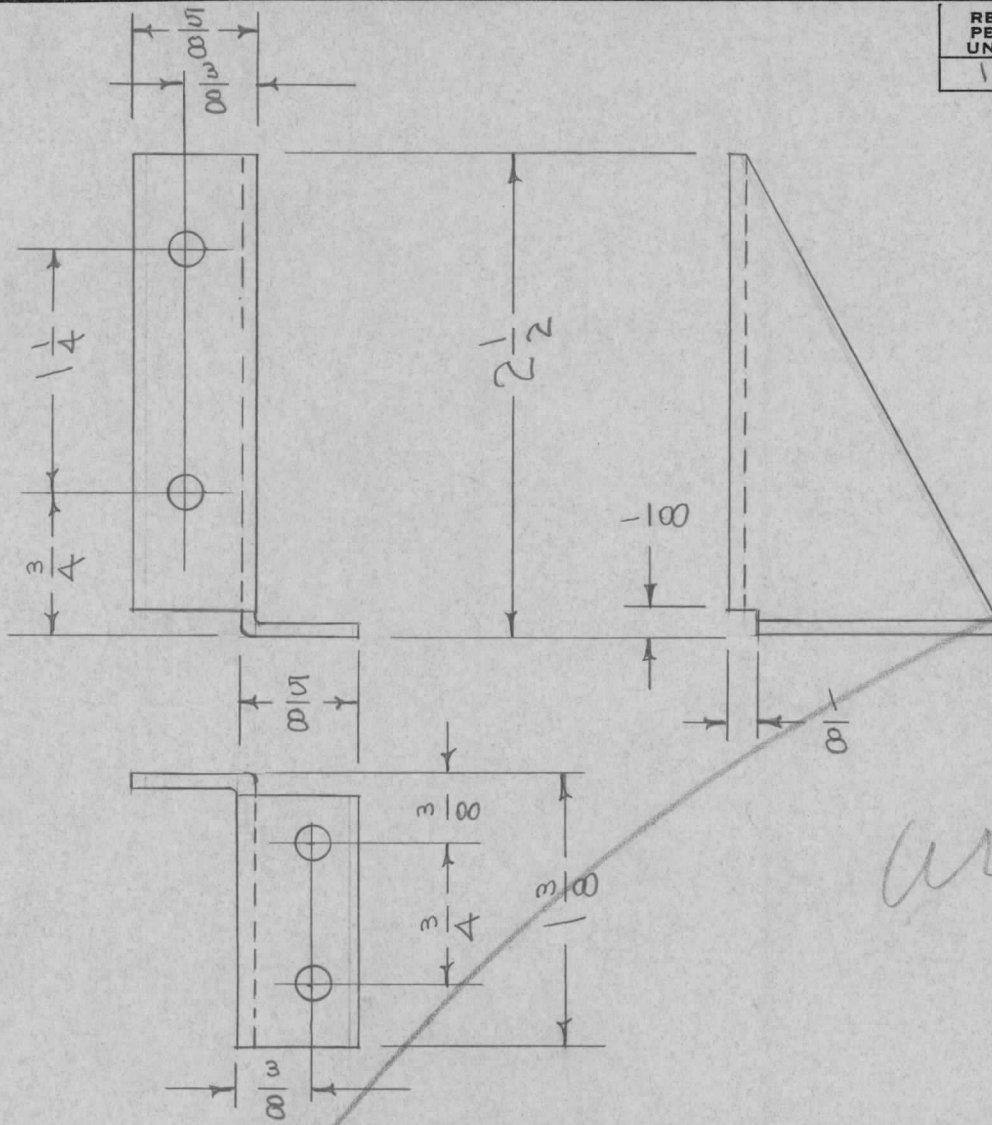
REQ. PER UNIT	AS9	USED ON		MS-948
	MODEL	ASS'Y. NO.	DATE	
1	G SB		5-22-56	

HOLES 1/64(.171) DIA. 4 REQ.

OBSOLETE

OBSOLETE

OBSOLETE



REQ. ITEM	PART NO.	DESCRIPTION	SYMBOL
	.064	THE TECHNICAL MATERIEL CORP. MAMARONECK, NEW YORK	
	STOCK SIZE	BRACKET, LEFT	
	ALUMINUM	DRIVE PLATE	G SB
ISSUE	ITEM	CHANGED FROM	DATE CH. NO. DRAFTS CHECKER ENG. APP.
TOLERANCES		SCALE:	
DEC. DIM. ±		MAXIMUM ALLOWABLE TOLERANCES HAVE BEEN DETERMINED AND ANY DEVIATIONS WILL BE CAUSE FOR REJECTION.	
FRAC. DIM. ± 1/64		REMOVE ALL BURRS AND SHARP EDGES	
ANGULAR DIM. ±		TYPE & TEMPER	HEAT TREAT. SPEC.
		5052 H32	
		9-101 CAUSTIC DIP	
		9-107 LACQUER	
		FINISH & SPEC. NO.	ELEC. DES. APP. MECH. DES. APP.
			DRAWN CHECKED FINAL APPROVAL
			MS-948

REQ. PER UNIT	271	USED ON		MS-951	A
	MODEL	ASS'Y. NO.	DATE		
1	CAB/FRAME		6-1-56		

NOTE - FINISH

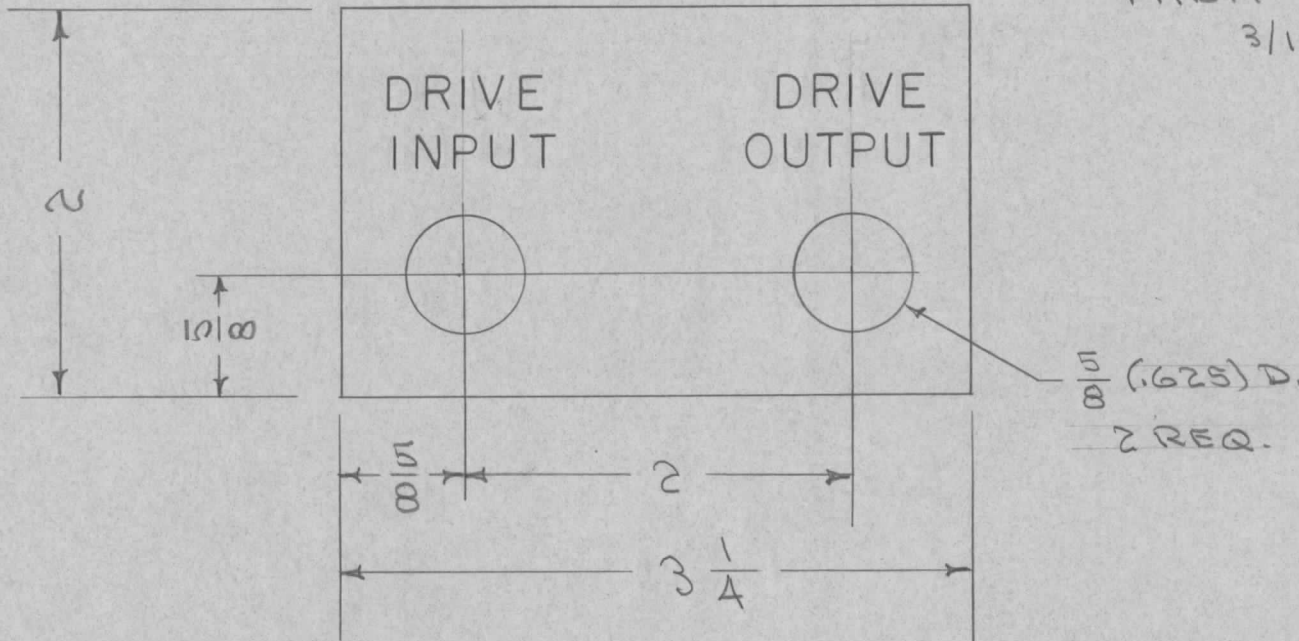
S-404- IRIDITE DIP

S-114 ZINC CHROMATE PRIMER

S-220 RCAF BLUE GRAY ENAMEL

THEN - STAMP AS SHOWN

3/16 HIGH WHITE GOTHIC



TO BE SUPPLIED
 WITH THE PARTS
 LISTED FOR
 THIS PROJECT
 (CONTRACT NO. OR PART NO.
 WHICH ARE IDENTICAL)

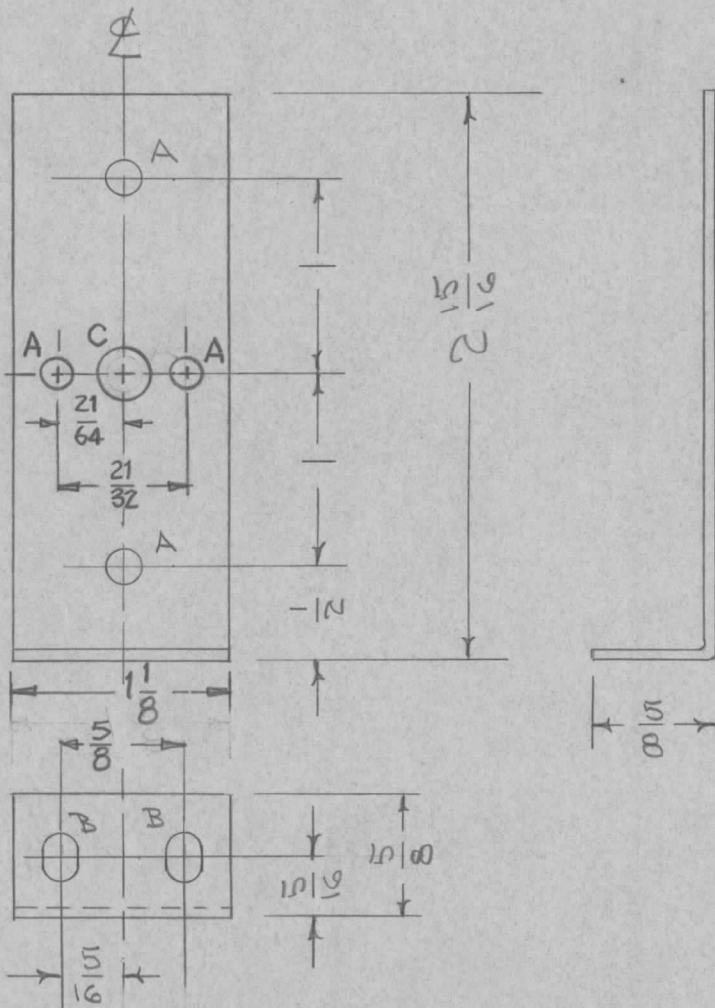
ISSUE	ITEM	CHANGED FROM	DATE	CH. NO.	DRAFTS	CHECKER	ENG. APP.	REQ. ITEM	PART NO.	DESCRIPTION	SYMBOL	
									.040	THE TECHNICAL MATERIEL CORP. MAMARONECK, NEW YORK		
									STOCK SIZE			
A	1	S404 IRIDITE. WAS S101 CAUSTIC DIP	12-8 59	1001	P		EMN		ALUMINUM	IDENTIFICATION PLATE,		
									MATERIAL	J506 J507	GPT-150	
TOLERANCES								SCALE:				
DEC. DIM. ± FRAC. DIM. ± 1/64 ANGULAR DIM. ±								MAXIMUM ALLOWABLE TOLERANCES HAVE BEEN DETERMINED AND ANY DEVIATIONS WILL BE CAUSE FOR REJECTION. REMOVE ALL BURRS AND SHARP EDGES				
								5052 H32		CDD 6/1/56	JND	A. J. J.
								TYPE & TEMPER	HEAT TREAT. SPEC.	DRAWN	CHECKED	FINAL APPROVAL
								SEE NOTE		OVP	WDC	MS-951
								FINISH & SPEC. NO.	ELEC. DES. APP.	MECH. DES. APP.		A

IF IT IS FOUND DESIRABLE TO CHANGE ANY TOLERANCE OR OTHER DETAIL SPECIFIED ON THIS DRAWING NOTIFY THE PURCHASER PROMPTLY.

MAXIMUM ALLOWABLE TOLERANCES HAVE BEEN DETERMINED AND DEVIATIONS WILL BE CAUSE FOR REJECTION. REMOVE ALL BURRS AND SHARP EDGES

MS-953 B

REQ PER UNIT	USED ON			
	MODEL	PROJECT NO.	ASS'Y. NO.	DATE
1	GPR-90	297		7-24-56
1	GPR-90-RXD			5-4-60



A - 1/64 (.171) DIA. 4 HOLES REQ.
 B - 3/16 x 1/4 2 SLOTS "
 C - 9/32 (.281) DIA 1 HOLE REQ

REQ.	ITEM	PART NO.	DESCRIPTION	SYMBOL
		.064	THE TECHNICAL MATERIEL CORP.	
		STOCK SIZE	MAMARONECK. NEW YORK	
		ALUMINUM	BRACKET, COND. WRAP	
		MATERIAL WEIGHT PER PC.	AROUND GPR-90	
		5052 H32	COND 7/24/56	###
		TYPE & TEMPER	DRAWN	ELEC. DES. APP. MECH. DES. APP.
		HEAT TREAT. SPEC.	Checked	Final Approval
		FINISH & SPEC. NO.	S404-IRIDITE	MS-953 B

B	1	(1) 1/4" HOLE AND (1) 1/2" HOLE ADDED	5/4/60		DM	file	
A	1	S404 IRIDITE WAS S101 CAUSTIC DIP	12-8 59	1001	SP		EMN
ISSUE	ITEM	CHANGED FROM	DATE	CN. NO.	DRAFTS	CHECKER	ENG. APP.

TOLERANCES

SCALE

ALL OTHERS

DEC. DIM. ±
 FRAC. DIM. ± 1/64
 ANGULAR DIM. ±

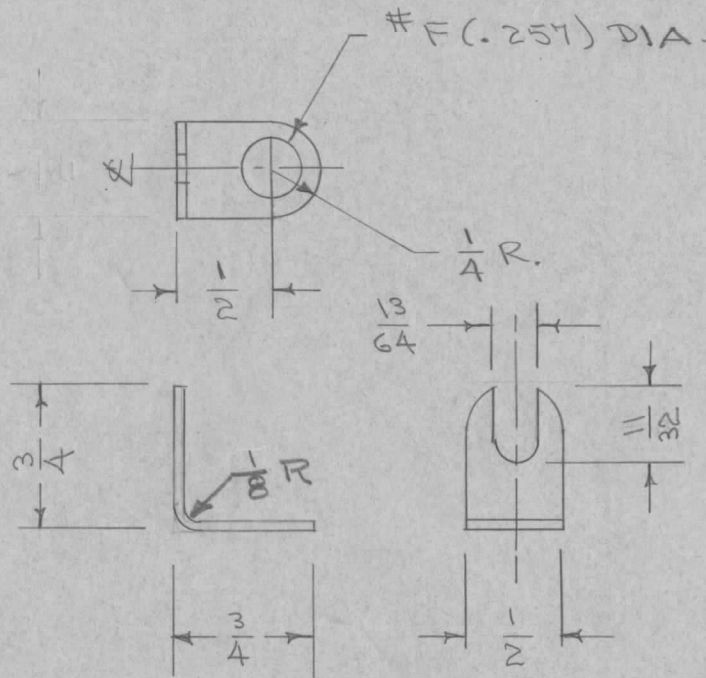
DRILL, PUNCH, COMMERCIAL STOCK SIZES AND MANUFACTURERS TOLERANCES ARE NOT INCLUDED.

IF IT IS FOUND DESIRABLE TO CHANGE ANY TOLERANCE OR OTHER DETAIL SPECIFIED ON THIS DRAWING NOTIFY THE PURCHASER PROMPTLY.

MS-954 A

MAXIMUM ALLOWABLE TOLERANCES HAVE BEEN DETERMINED AND DEVIATIONS WILL BE CAUSE FOR REJECTION. REMOVE ALL BURRS AND SHARP EDGES

REQ. PER UNIT	USED ON			
	MODEL	PROJECT NO.	ASS'Y. NO.	DATE
2	RTF			4-27-56
7	RTF-2			11-5-58

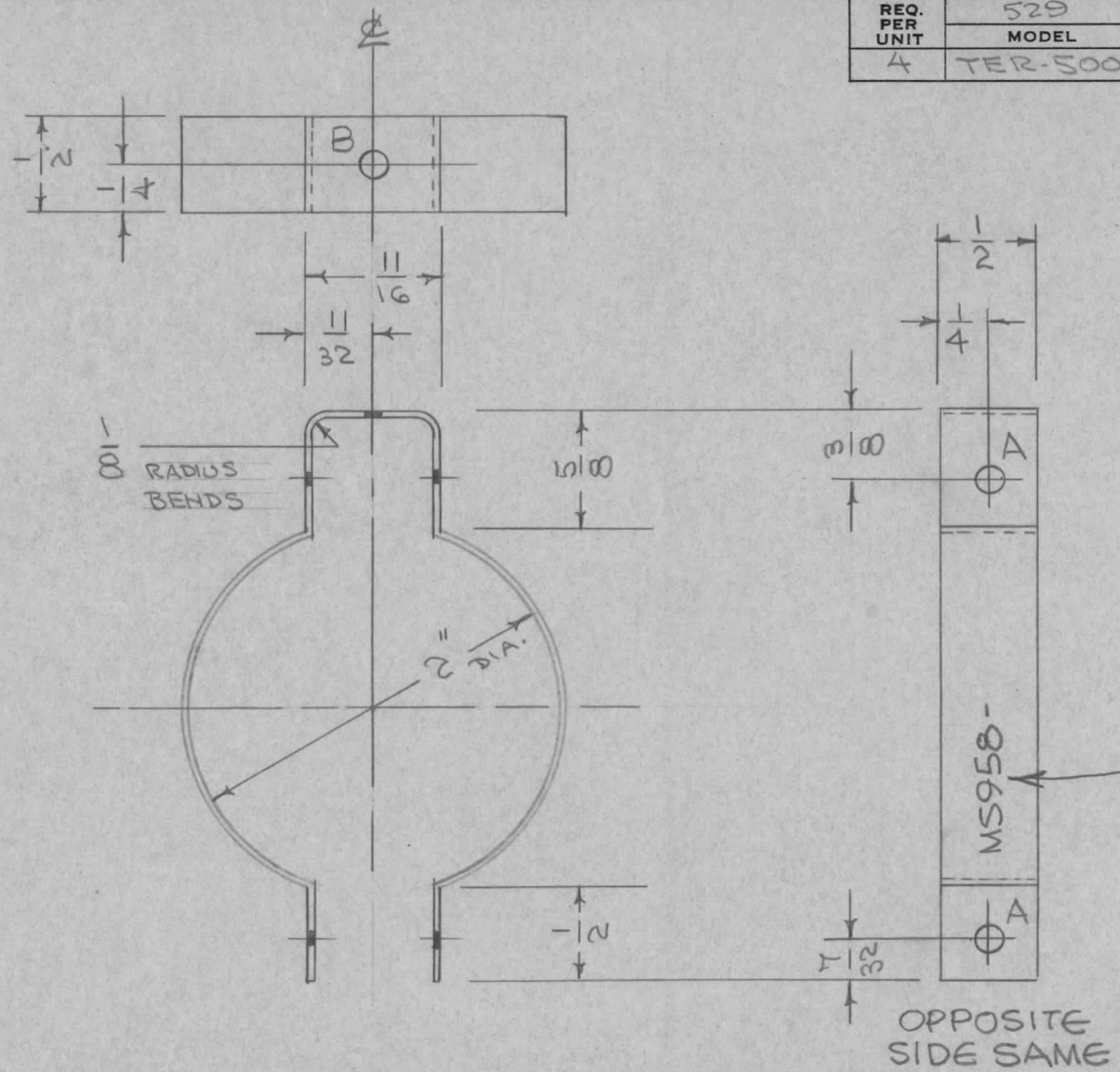


REQ.	ITEM	PART NO.	DESCRIPTION	SYMBOL
			THE TECHNICAL MATERIEL CORP. MAMARONECK, NEW YORK	
			MOUNTING BRACKET	
			POW/AMP - L107 GPT-150	
			SOFT	
			TYPE & TEMPER	
			CHECKED	FINAL APPROVAL
			HEAT TREAT. SPEC.	
			S-245 SILVER PLATE .0005	
			FINISH & SPEC. NO.	
				MS-954 A

A	1	.013 WAS .020	3-8-57	1	Sec.	16	AKS
ISSUE	ITEM	CHANGED FROM	DATE	CN. NO.	DRAFTS	CHECKER	ENG. APP.

TOLERANCES		SCALE
ALL OTHERS	DEC. DIM. \pm FRAC. DIM. $\pm \frac{1}{64}$ ANGULAR DIM. \pm	DRILL, PUNCH, COMMERCIAL STOCK SIZES AND MANUFACTURERS TOLERANCES ARE NOT INCLUDED.

REQ. PER UNIT	529		USED ON		M9 958	A
	MODEL	ASS'Y. NO.	DATE			
4	TER-500		8-20-56			



A HOLES - 5/32 (.156) DIA.
4 REQ.
B HOLES - 3/16 (.187) DIA
1 REQ

MARK TMC PART NO.
1/8 HIGH GOTHIC W/LATEST
REVISION LETTER.

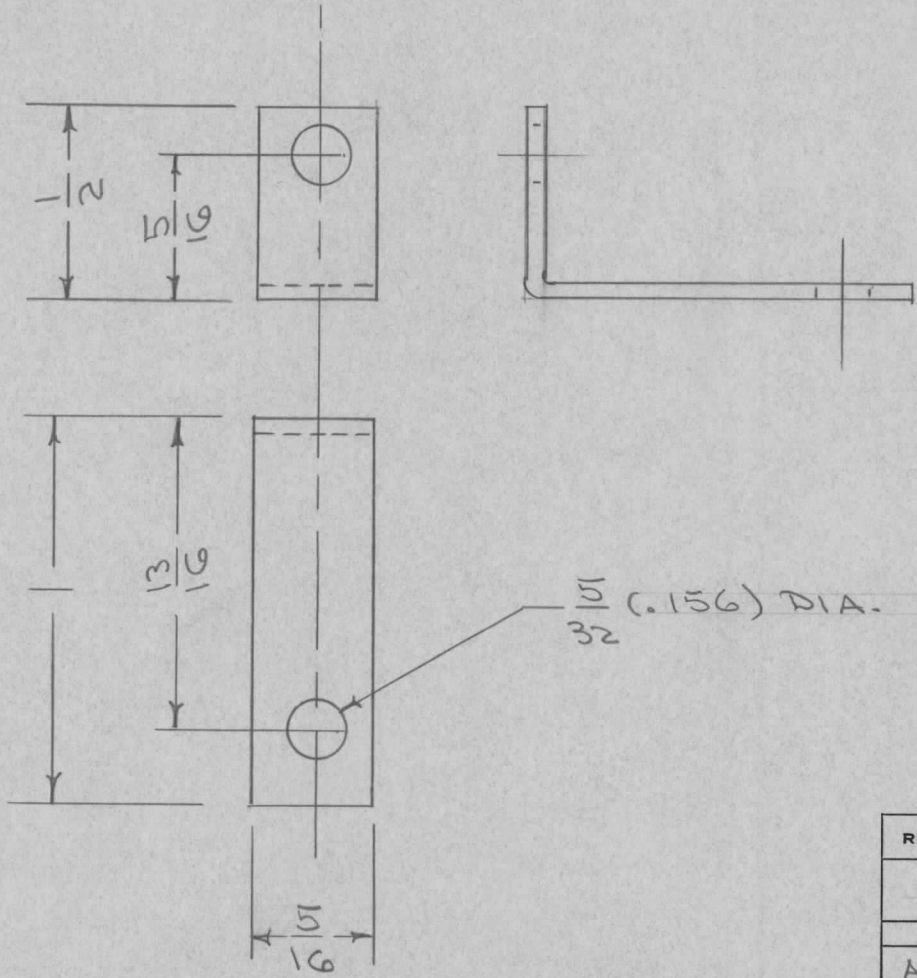
ISSUE	ITEM	CHANGED FROM	DATE	CH. NO.	DRAFTS	CHECKER	ENG. APP.	REQ. ITEM	PART NO.	DESCRIPTION	SYMBOL			
									.023 THK	THE TECHNICAL MATERIEL CORP. MAMARONECK, NEW YORK				
									STOCK SIZE					
									COPPER		RESISTOR CLAMP			
									MATERIAL	TER-500				
A		'B' HOLE WAS 'A' ADD TMC NO.	2.3.67	17778	LHW	<i>[Signature]</i>								
TOLERANCES			SCALE:											
DEC. DIM. ±			MAXIMUM ALLOWABLE TOLERANCES HAVE BEEN DETERMINED AND ANY DEVIATIONS WILL BE CAUSE FOR REJECTION.											
FRAC. DIM. ± Y64			REMOVE ALL BURRS AND SHARP EDGES											
ANGULAR DIM. ±														
			TYPE & TEMPER			HEAT TREAT. SPEC.			DRAWN		CHECKED		FINAL APPROVAL	
			BERYLUM						<i>[Signature]</i>		<i>[Signature]</i>		MS-958	
			SILVER PLATE						<i>[Signature]</i>		<i>[Signature]</i>		A	
			.0004						ELEC. DES. APP.		MECH. DES. APP.			
			FINISH & SPEC. NO.											

IF IT IS FOUND DESIRABLE TO CHANGE ANY TOLERANCE OR OTHER DETAIL SPECIFIED ON THIS DRAWING NOTIFY THE PURCHASER PROMPTLY.

MS-959 A

MAXIMUM ALLOWABLE TOLERANCES HAVE BEEN DETERMINED AND DEVIATIONS WILL BE CAUSE FOR REJECTION. REMOVE ALL BURRS AND SHARP EDGES

REQ PER UNIT	USED ON			
	MODEL	PROJECT NO.	ASS'Y. NO.	DATE
4	FX-150	459		8/15/56



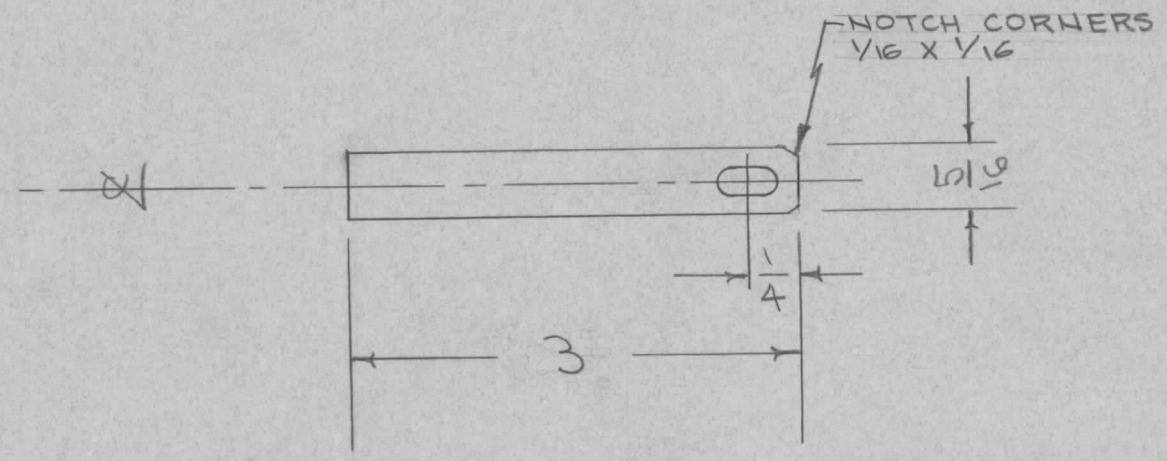
BLANK SIZE - 1 13/32 X 5/16

REQ.	ITEM	PART NO.	DESCRIPTION	SYMBOL
	.051		THE TECHNICAL MATERIEL CORP. MAMARONECK, NEW YORK	
		STOCK SIZE		
	ALUMINUM		BRACKET, COIL MTG.	
		MATERIAL	FX-150	
		WEIGHT PER PC.		
		5052 H32		
		TYPE & TEMPER	ADD 8/15/56	R.S.
			DRAWN	ELEC. DES. APP.
			HEAT TREAT. SPEC.	MECH. DES. APP.
		S-404 IRIDITE	CHECKED	FINAL APPROVAL
		FINISH & SPEC. NO.		MS-959 A

A	1	5404 IRIDITE WAS S101 CAUSTIC DIP	12-8 59	1001	CP	EMN.	
ISSUE	ITEM	CHANGED FROM	DATE	CN. NO.	DRAFTS	CHECKER	ENG. APP.
TOLERANCES			SCALE				
ALL OTHERS	DEC. DIM. ± FRAC. DIM. ± 1/64 ANGULAR DIM. ±		DRILL, PUNCH, COMMERCIAL STOCK SIZES AND MANUFACTURERS TOLERANCES ARE NOT INCLUDED.				

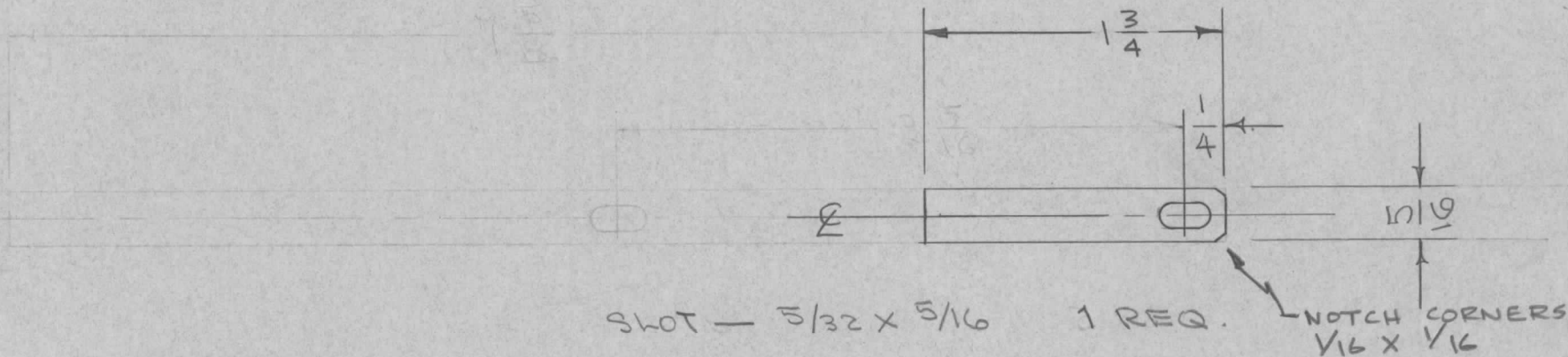
REQ. PER UNIT	44A	USED ON		MS-961	B
	MODEL	ASS'Y. NO.	DATE		
1	RTF		8-20-56		

SLOT - 5/32 x 5/16



ISSUE	ITEM	CHANGED FROM	DATE	CH. NO.	DRAFTS	CHECKER	ENG. APP.	REQ. ITEM	PART NO.	DESCRIPTION	SYMBOL		
									.019 THK.	THE TECHNICAL MATERIEL CORP. MAMARONECK. NEW YORK			
									STOCK SIZE				
B	1	CORNERS NOTCHED	12/13/56	2	16	JAB	AKC		COPPER	CONNECTOR, CAP. INC. SW.			
A	1	3" WAS 2 5/16	10/0/56	1	000	JAB	AKC			TO FIXED CAP. C-118 P/A RTF			
TOLERANCES								MATERIAL					
SCALE:								COMMERCIAL		000 8/20/56	JAB	AKC	
DEC. DIM. ±								TYPE & TEMPER	HEAT TREAT. SPEC.	DRAWN	CHECKED	FINAL APPROVAL	
FRAC. DIM. ± 1/64								S-245 SILVER PLATE				MS-961	B
ANGULAR DIM. ±								0.0005					
MAXIMUM ALLOWABLE TOLERANCES HAVE BEEN DETERMINED AND ANY DEVIATIONS WILL BE CAUSE FOR REJECTION. REMOVE ALL BURRS AND SHARP EDGES								FINISH & SPEC. NO.		ELEC. DES. APP.	MECH. DES. APP.		

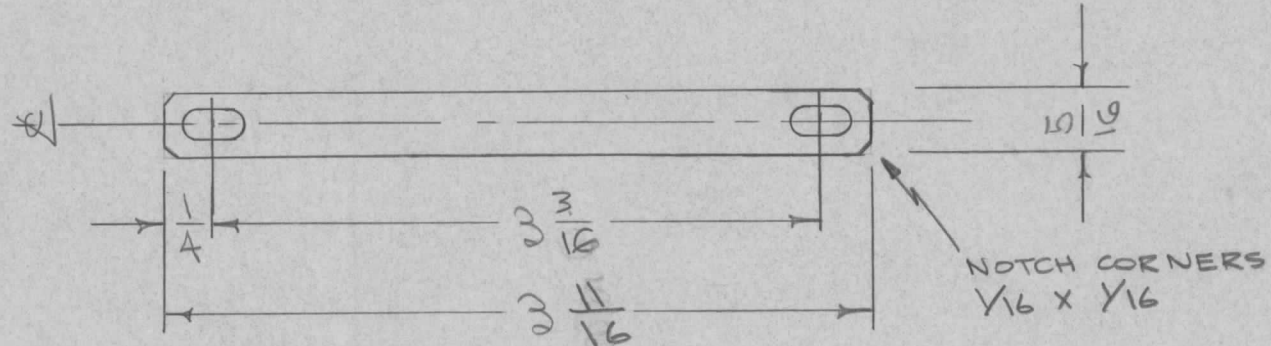
REQ. PER UNIT	444	USED ON		MS-963	B
	MODEL	ASS'Y. NO.	DATE		
1	RTF		8-20-56		



ISSUE	ITEM	CHANGED FROM	DATE	CH. NO.	DRAFTS	CHECKER	ENG. APP.	REQ. ITEM	PART NO.	DESCRIPTION	SYMBOL	
B	3	CORNERS NOTCHED	12/13/56	2	16	JHE	AK		.019 THICK	THE TECHNICAL MATERIEL CORP. MAMARONECK, NEW YORK		
	2	1 3/4 WAS 7 5/8							STOCK SIZE			
	1	SLOT WAS 2 REQ.							COPPER	CONNECTOR, SW-166		
A	1	7 5/8 WAS 7 1/16	10/1/56	1	050	JHE	AK		MATERIAL	TO CHIT SEC A. P/A RTF.		
TOLERANCES			SCALE:					COMMERCIAL SOFT	0008/20/56	JHE	WDC	
DEC. DIM. ±			MAXIMUM ALLOWABLE TOLERANCES HAVE BEEN DETERMINED AND ANY DEVIATIONS WILL BE CAUSE FOR REJECTION. REMOVE ALL BURRS AND SHARP EDGES					TYPE & TEMPER	HEAT TREAT. SPEC.	DRAWN	CHECKED	FINAL APPROVAL
FRAC. DIM. ± 1/64								5-245 SILVER PLATE	.0005		AM	
ANGULAR DIM. ±								FINISH & SPEC. NO.	ELEC. DES. APP.	MECH. DES. APP.		

REQ. PER UNIT	444	USED ON		MS-964	A
	MODEL	ASS'Y. NO.	DATE		
1	RTF		8-20-56		

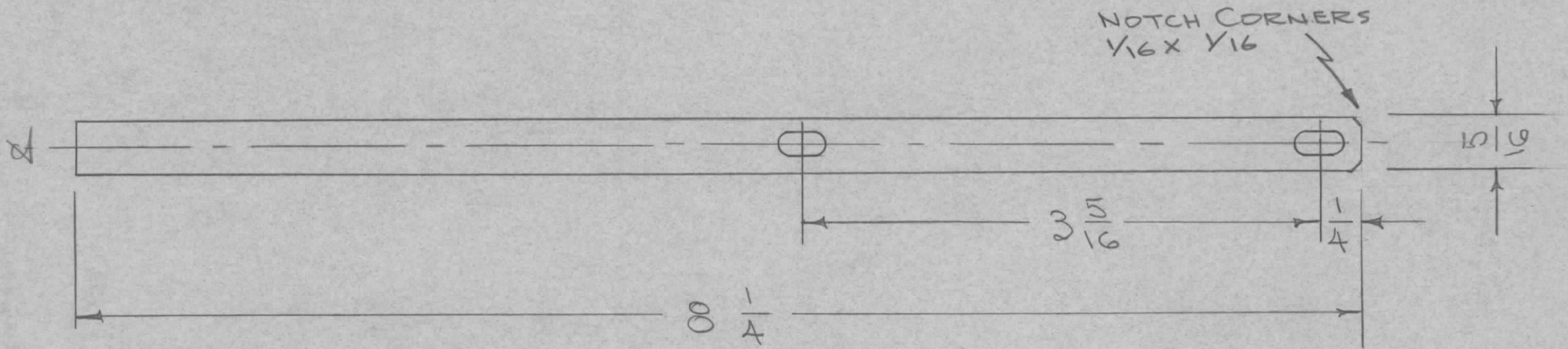
SLOTS 5/32 X 5/16 2 REQ.



ISSUE	ITEM	CHANGED FROM	DATE	CH. NO.	DRAFTS	CHECKER	ENG. APP.	REQ. ITEM	PART NO.	DESCRIPTION	SYMBOL	
									.019 THK	THE TECHNICAL MATERIEL CORP. MAMARONECK, NEW YORK		
									STOCK SIZE			
A	2	CORNERS NOTCHED	12/13/66	1	16	JHQ	AMP		COPPER	CONNECTOR, STAND OFF TO		
	1	3 3/16 WAS 3 1/8								C117 SEC. B	P/A RTF	
									MATERIAL			
								COMMERCIAL SOFT		CDDB/20/56	JHQ	
									TYPE & TEMPER	CHECKED	WC	
									HEAT TREAT. SPEC.			
									S-245 SILVER PLATE			
									.0005			
									FINISH & SPEC. NO.	ELEC. DES. APP.	MS-964	
										MECH. DES. APP.	A	
TOLERANCES			SCALE:					MAXIMUM ALLOWABLE TOLERANCES HAVE BEEN DETERMINED AND ANY DEVIATIONS WILL BE CAUSE FOR REJECTION.				
DEC. DIM. ±								REMOVE ALL BURRS AND SHARP EDGES				
FRAC. DIM. ± 1/64												
ANGULAR DIM. ±												

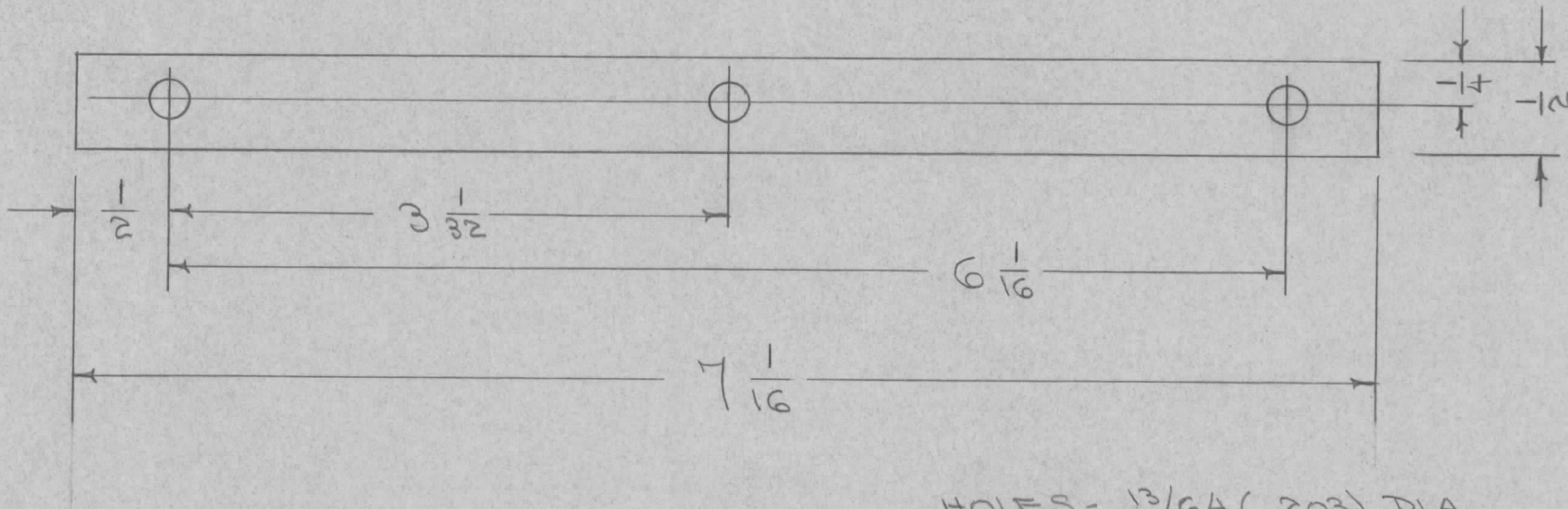
REQ. PER UNIT	444	USED ON		MS-965	A
	MODEL	ASS'Y. NO.	DATE		
1	RTF		8-20-56		

SLOTS - 5/32 X 5/16 2 REQ.



ISSUE	ITEM	CHANGED FROM	DATE	CH. NO.	DRAFTS	CHECKER	ENG. APP.	REQ. ITEM	PART NO.	DESCRIPTION	SYMBOL			
									.019 THK.	THE TECHNICAL MATERIEL CORP. MAMARONECK, NEW YORK				
									STOCK SIZE					
A	1	CORNERS NOTCHED	12/13/56	1	16	JNG	OMO		COPPER	CONNECTOR, COIL TO				
									MATERIAL	CWT SEC. B	P/A RTF			
								COMMERCIAL SOFT		CDD 8/20/56	JNG	WJC		
TOLERANCES			SCALE:								DRAWN	CHECKED	FINAL APPROVAL	
DEC. DIM. ±			MAXIMUM ALLOWABLE TOLERANCES HAVE BEEN DETERMINED AND ANY DEVIATIONS WILL BE CAUSE FOR REJECTION. REMOVE ALL BURRS AND SHARP EDGES											
FRAC. DIM. ± 1/64														
ANGULAR DIM. ±														
									TYPE & TEMPER S-245 SILVER PLATE .0005	HEAT TREAT. SPEC.				
									FINISH & SPEC. NO.	ELEC. DES. APP.	MECH. DES. APP.			
												MS-965	A	

REQ. PER UNIT	529	USED ON		MS-966
	MODEL	ASS'Y. NO.	DATE	
1	TER-500		8-20-56	

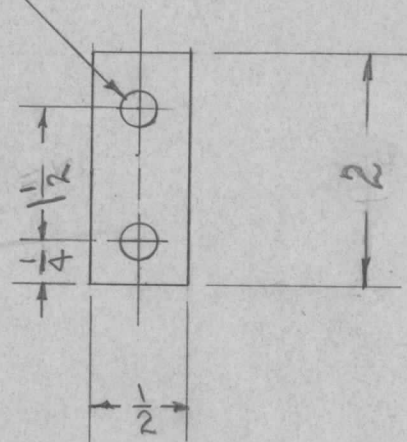


HOLES - 13/64 (.203) DIA.
3 REQ'D.

							REQ. ITEM	PART NO.	DESCRIPTION	SYMBOL	
							.025		THE TECHNICAL MATERIEL CORP. MAMARONECK, NEW YORK GROUND CONNECTOR TER-500		
							STOCK SIZE				
							COPPER				
							MATERIAL				
ISSUE ITEM	CHANGED FROM	DATE	CH. NO.	DRAFTS	CHECKER	ENG. APP.	COMMERCIAL SOFT	ODD 8/20/56	 		
TOLERANCES		SCALE:					TYPE & TEMPER	HEAT TREAT. SPEC.	DRAWN	CHECKED	FINAL APPROVAL
DEC. DIM. ±		MAXIMUM ALLOWABLE TOLERANCES HAVE BEEN DETERMINED AND ANY DEVIATIONS WILL BE CAUSE FOR REJECTION. REMOVE ALL BURRS AND SHARP EDGES					SILVER PLATE		 		MS-966
FRAC. DIM. ± 1/64							FINISH & SPEC. NO.	ELEC. DES. APP.	MECH. DES. APP.		
ANGULAR DIM. ±											

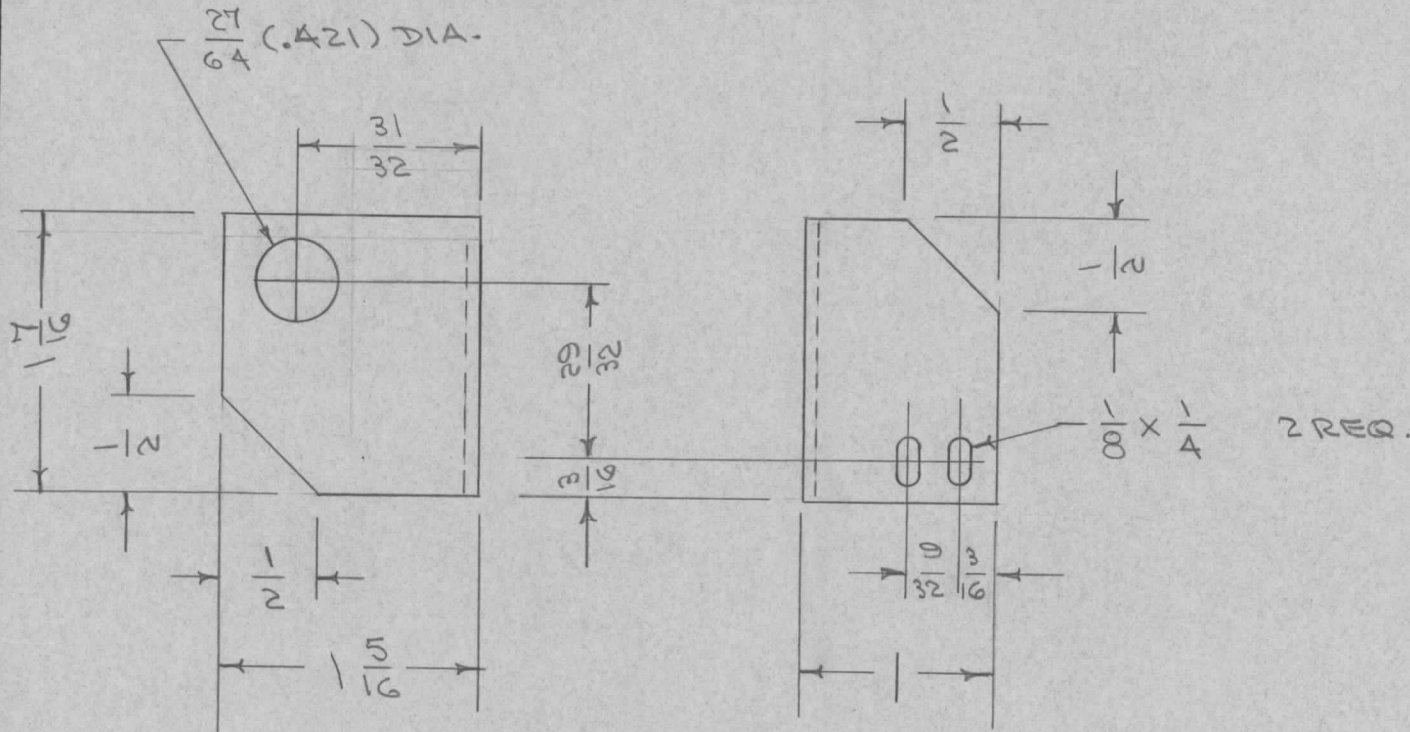
REQ. PER UNIT	USED ON			MS-967	A
	MODEL	ASS'Y. NO.	DATE		
1	G5B-1		8-20-56		

3/16(.187) D
2 HOLES



								REQ. ITEM	PART NO.	DESCRIPTION	SYMBOL						
								.051		THE TECHNICAL MATERIEL CORP. MAMARONECK, NEW YORK							
								STOCK SIZE									
A	1	5404 - IRIDITE WAS S101 - CAUSTIC DIP	12-8 59	1001	<i>P</i>		EMN	ALUMINUM	SOCKET, EXTENSION								
ISSUE	ITEM	CHANGED FROM	DATE	CH. NO.	DRAFTS	CHECKER	ENG. APP.	MATERIAL	MODEL G5B-1								
TOLERANCES			SCALE:					5052-H32									
DEC. DIM. ±			MAXIMUM ALLOWABLE TOLERANCES HAVE BEEN DETERMINED AND ANY DEVIATIONS WILL BE CAUSE FOR REJECTION. REMOVE ALL BURRS AND SHARP EDGES					TYPE & TEMPER	HEAT TREAT. SPEC.	DRAWN	CHECKED	FINAL APPROVAL					
FRAC. DIM. ± 1/64													S404 - IRIDITE				
ANGULAR DIM. ±													FINISH & SPEC. NO.	ELEC. DES. APP.	MECH. DES. APP.	MS-967	A

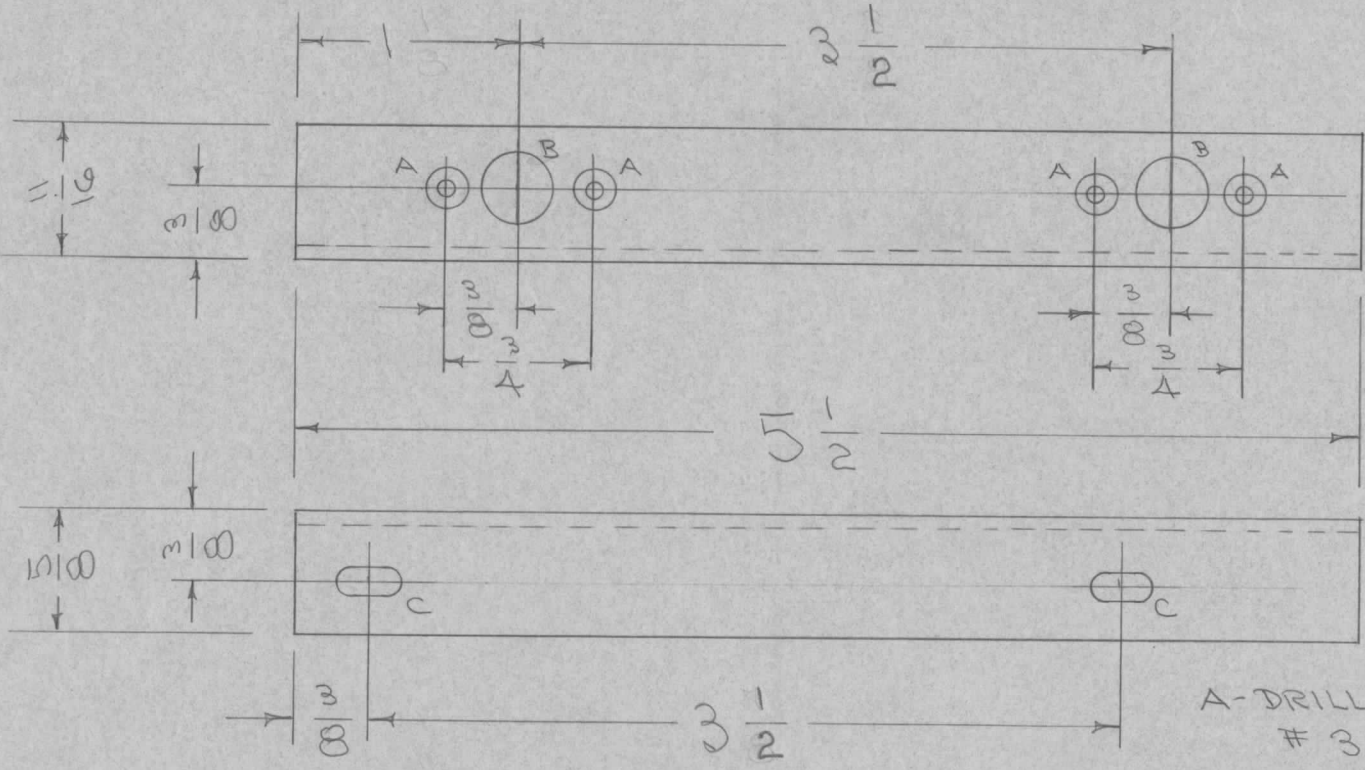
REQ. PER UNIT	USED ON			MS-968	A
	MODEL	ASS'Y. NO.	DATE		
1	RTF		8-23-46		



ISSUE	ITEM	CHANGED FROM	DATE	CH. NO.	DRAFTS	CHECKER	ENG. APP.	REQ. ITEM	PART NO.	DESCRIPTION	SYMBOL				
									.064	THE TECHNICAL MATERIEL CORP. MAMARONECK, NEW YORK	BRACKET, S.S.B. SWITCH				
									STOCK SIZE						
									ALUMINUM						
A	1	5404-IRIDITE WAS 3101-CAUSTIC DIP	12-8 59	1001	P		EMN			MULT.	RTF				
TOLERANCES			SCALE:					5052 H32		8/23/46	JAD	WJ			
DEC. DIM. \pm			MAXIMUM ALLOWABLE TOLERANCES HAVE BEEN DETERMINED AND ANY DEVIATIONS WILL BE CAUSE FOR REJECTION. REMOVE ALL BURRS AND SHARP EDGES					TYPE & TEMPER	HEAT TREAT. SPEC.	DRAWN	CHECKED	FINAL APPROVAL			
FRAC. DIM. \pm $\frac{1}{64}$								5404 IRIDITE							
ANGULAR DIM. \pm								FINISH & SPEC. NO.	ELEC. DES. APP.	MECH. DES. APP.					MS-968

REQ. PER UNIT	610	USED ON	
	MODEL	ASS'Y. NO.	DATE
1	RTF		9-7-56
1	RTF-2	P/A	11/20/58

MS-969 A



- A- DRILL & SINK FOR #3 FHS 4 REQ.
- B- 3/8 (.375) D. 2 "
- C- 5/32 x 5/16 SLOT 2 "

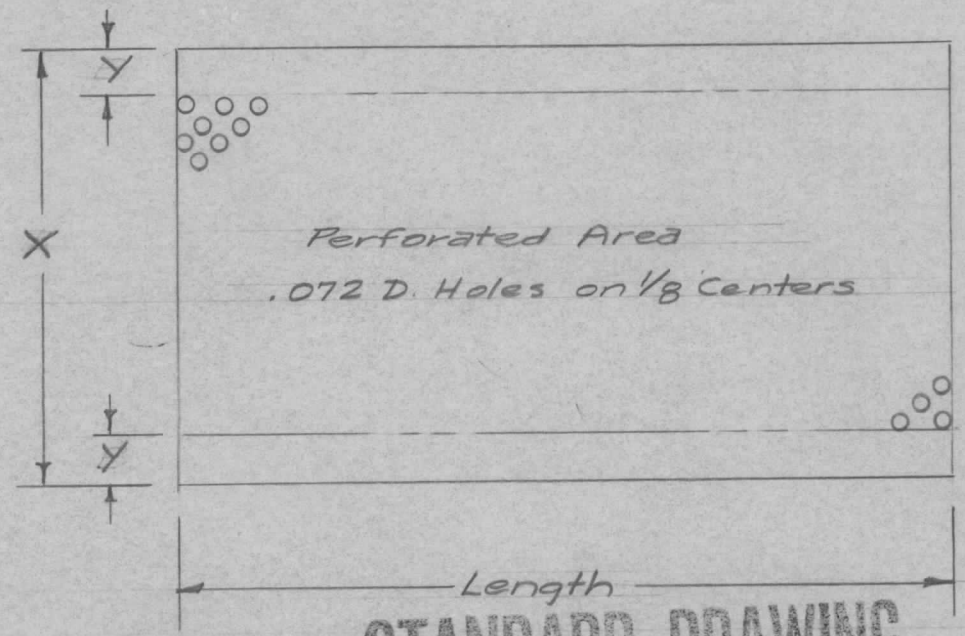
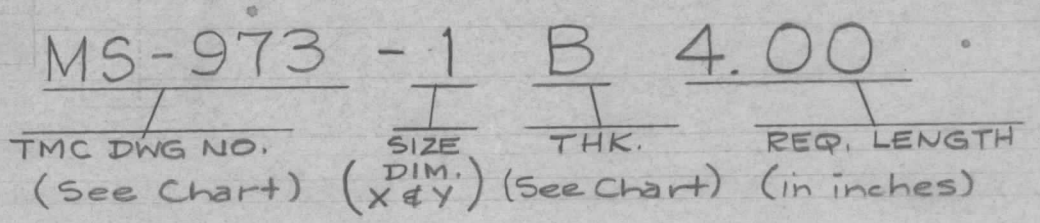
REQ.	ITEM	PART NO.	DESCRIPTION				SYMBOL
		.064	THE TECHNICAL MATERIEL CORP.				
		STOCK SIZE	MAMARONECK, NEW YORK				
A	1	5404-IRIDITE WAS 5101-CAUSTIC DIP	12-8 59	1001	P	EMN	BRACKET, COVER PLATE
ISSUE	ITEM	CHANGED FROM	DATE	CH. NO.	DRAFTS	CHECKER	ENG. APP.
TOLERANCES			SCALE:				
DEC. DIM. ±			MAXIMUM ALLOWABLE TOLERANCES HAVE BEEN DETERMINED AND ANY DEVIATIONS WILL BE CAUSE FOR REJECTION. REMOVE ALL BURRS AND SHARP EDGES				
FRAC. DIM. ± 1/64							
ANGULAR DIM. ±							
5052 H32		MATERIAL		TYPE & TEMPER		HEAT TREAT. SPEC.	DRAWN
5404 IRIDITE							CHECKED
FINISH & SPEC. NO.		ELEC. DES. APP.		MECH. DES. APP.			
						MS-969	A

TMC NO.	DIMENSION	
	X	Y
MS-973-1	2 1/4	1/4
MS-973-2	3	1/4
MS-973-3		
MS-973-4		
MS-973-5		

THK.	CODE
.040	A
.051	B
.064	C
.081	D

REQ. PER UNIT	USED ON		MS-973	B
	MODEL	ASS'Y. NO.		
1st	RFA			

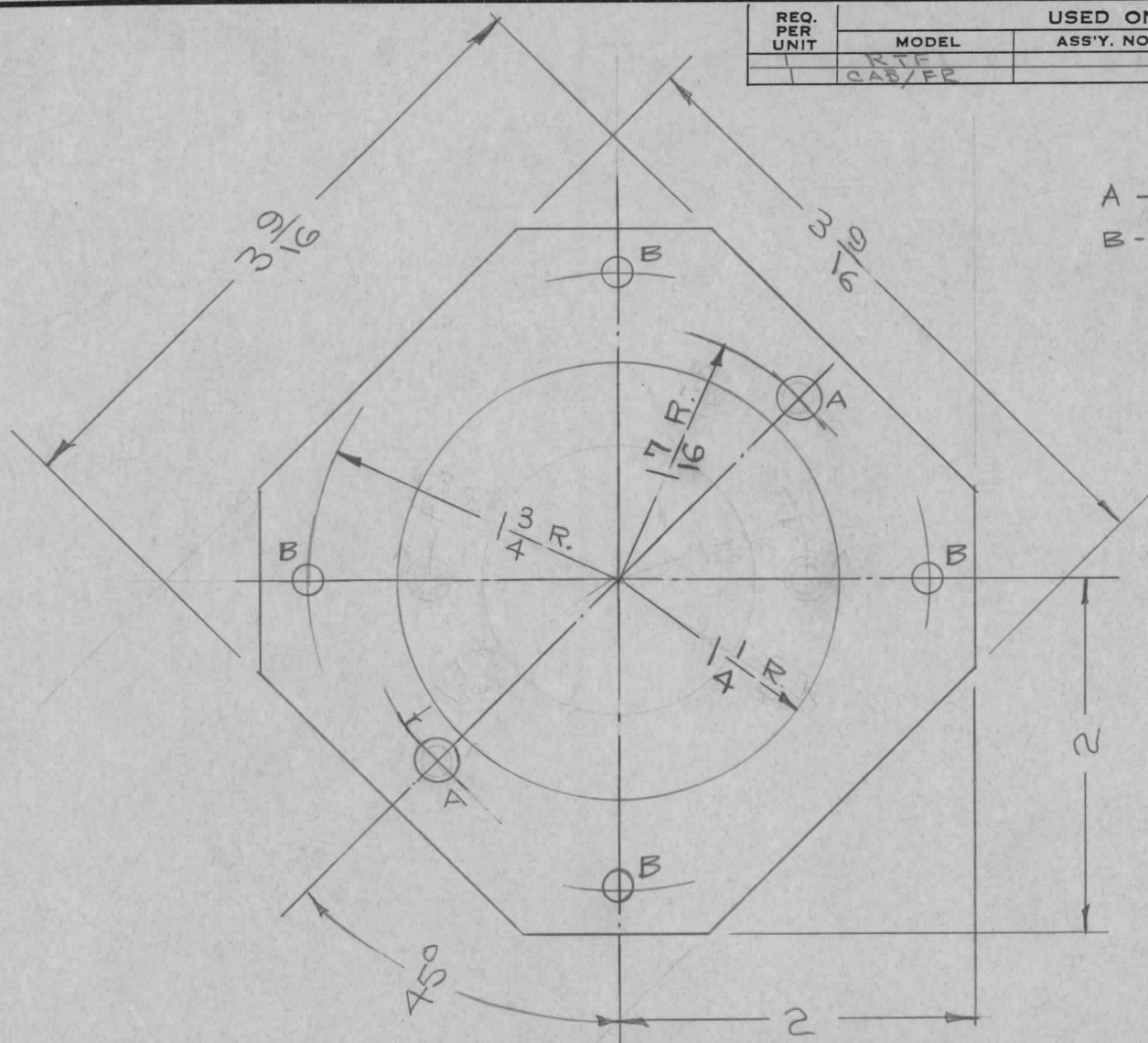
Type Designation to be as follows:



STANDARD DRAWING

ISSUE	ITEM	CHANGED FROM	DATE	CH. NO.	DRAFTS	CHECKER	ENG. APP.	REQ. ITEM	PART NO.	DESCRIPTION	SYMBOL		
B	1	ms-973-2 Added for MS-1268 (RFA)	5/21/58	2	16	HJG	RFB			THE TECHNICAL MATERIEL CORP. MAMARONECK, NEW YORK	BLANK SIZE, PERFORATED		
A	1	.064 & .081 THK. DELE. 2 1/4 WAS 2 1/2 1/4 WAS 1/2	5/19/58	1	16	file	ghr		Aluminum				
TOLERANCES								MATERIAL					
SCALE:								5052-H32		6/5/58	HJG	ghr	
DEC. DIM. ± FRAC. DIM. ± 1/64 ANGULAR DIM. ±								TYPE & TEMPER		HEAT TREAT. SPEC.	DRAWN	CHECKED	FINAL APPROVAL
MAXIMUM ALLOWABLE TOLERANCES HAVE BEEN DETERMINED AND ANY DEVIATIONS WILL BE CAUSE FOR REJECTION. REMOVE ALL BURRS AND SHARP EDGES								FINISH & SPEC. NO.		ELEC. DES. APP.	MECH. DES. APP.	MS-973	B

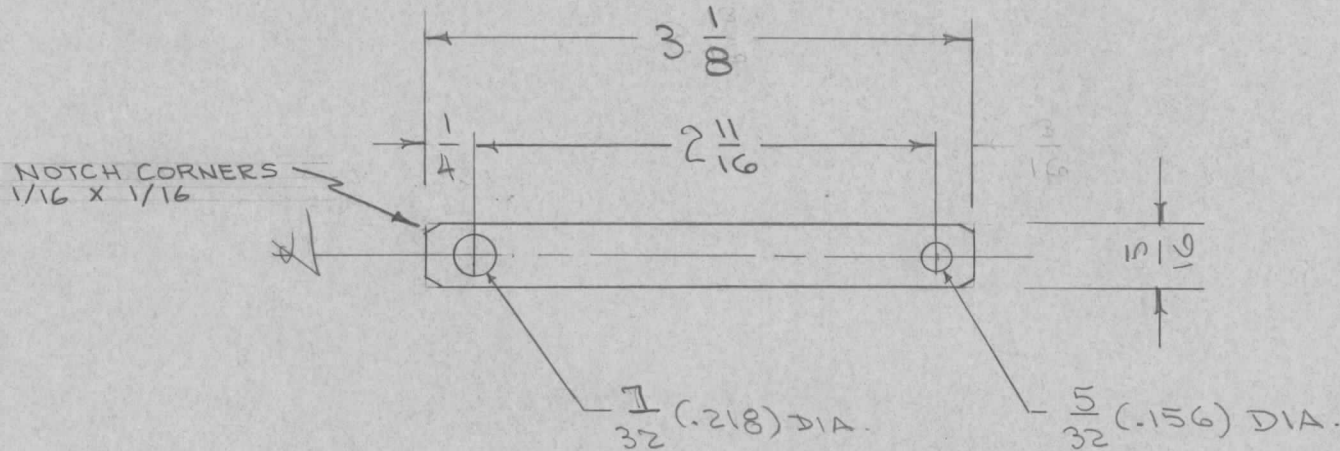
REQ. PER UNIT	USED ON		MS-978 D
	MODEL	ASS'Y. NO.	
	RTF		9/6/56
	CAB/FR		



A - 1/4 (.250) D. 2 REQ.
 B - 13/64 (.203) D. 4 REQ.

D	1	S-404 IRIDITE WAS S-101 CAUSTIC DIP	12-8 59	1001	Φ		EMN	REQ. ITEM	PART NO.	DESCRIPTION	SYMBOL					
C	1	1 1/4 R. WAS 3/4 R. TWO "A" HOLE DELE	11/1/57	3	16	JADe	EMN		.064	THE TECHNICAL MATERIEL CORP. MAMARONECK. NEW YORK						
B	1	FOUR "A" HOLES WERE "B" HOLES	1/5/57	2	16	JADe	EMN		STOCK SIZE							
A	1	13/64 D 2 holes Added	10/29/56	1		JADe	EMN		ALUMINUM	PLATE, MOTOR MOUNT						
									MATERIAL	P/A & CAB/FR	GPT-750					
ISSUE	ITEM	CHANGED FROM	DATE	CH. NO.	DRAFTS	CHECKER	ENG. APP.	5052-H32		JADe 9/6/56	JADe	WDC				
TOLERANCES		SCALE:						TYPE & TEMPER	HEAT TREAT. SPEC.	DRAWN	CHECKED	FINAL APPROVAL				
DEC. DIM. ±		MAXIMUM ALLOWABLE TOLERANCES HAVE BEEN DETERMINED AND ANY DEVIATIONS WILL BE CAUSE FOR REJECTION. REMOVE ALL BURRS AND SHARP EDGES						S404 IRIDITE								
FRAC. DIM. ± 1/64																
ANGULAR DIM. ±																
								FINISH & SPEC. NO.	ELEC. DES. APP.	MECH. DES. APP.	MS-978 D					

REQ. PER UNIT	610			MS-979	B
	MODEL	USED ON ASS'Y. NO.	DATE		
1	RTF		9-6-56		



ISSUE	ITEM	CHANGED FROM	DATE	CH. NO.	DRAFTS	CHECKER	ENG. APP.	REQ. ITEM	PART NO.	DESCRIPTION	SYMBOL	
									.019	THE TECHNICAL MATERIEL CORP. MAMARONECK, NEW YORK		
									STOCK SIZE			
									COPPER		CONNECTOR, THERMOCOUPLE TO R.F. OUTPUT BUTTON P/A RTF	
									MATERIAL			
								COMMERCIAL SOFT		ESD 9/6/56		
								TYPE & TEMPER	HEAT TREAT. SPEC.	DRAWN	CHECKED	FINAL APPROVAL
								SILVER PLATE .0005				
								FINISH & SPEC. NO.		ELEC. DES. APP.	MECH. DES. APP.	
												MS-979 B

TOLERANCES

DEC. DIM. ±

FRAC. DIM. ± 1/64

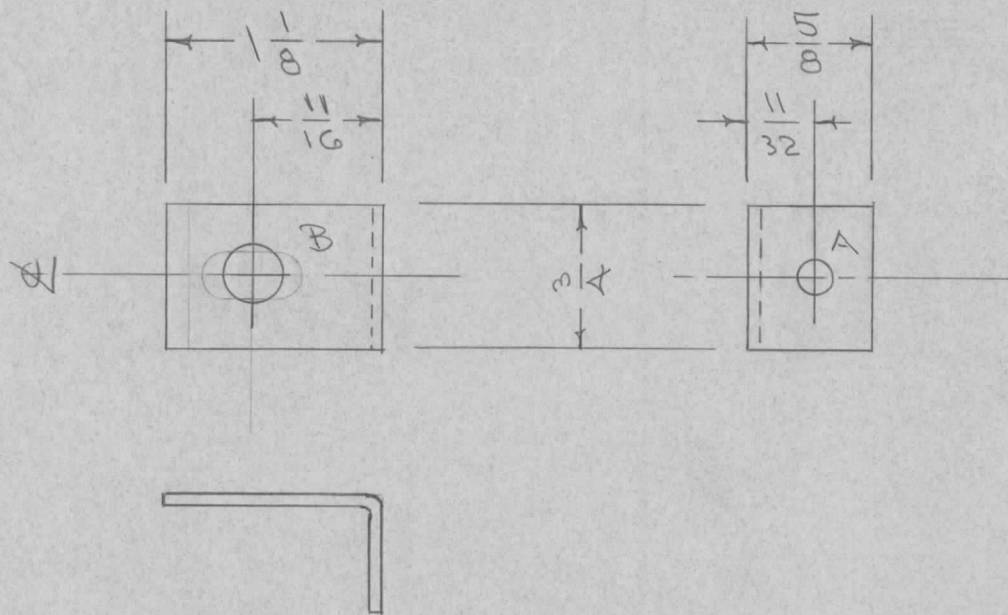
ANGULAR DIM. ±

SCALE:

MAXIMUM ALLOWABLE TOLERANCES HAVE BEEN DETERMINED AND ANY DEVIATIONS WILL BE CAUSE FOR REJECTION.

REMOVE ALL BURRS AND SHARP EDGES

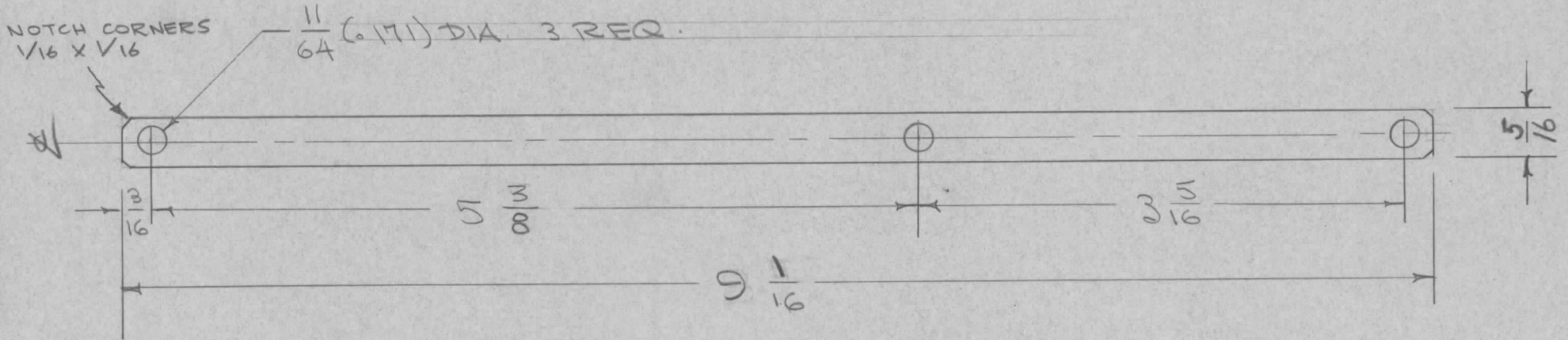
REQ. PER UNIT	610	USED ON		MS-981	A
	MODEL	ASS'Y. NO.	DATE		
1	RTF		9/6/56		
	RTF-3	T/A	11/20/57		



A - 1/64 (.171) DIA.
 B - 5/16 (.3125) "

REQ.	ITEM	PART NO.	DESCRIPTION				SYMBOL
		.064	THE TECHNICAL MATERIEL CORP. MAMARONECK, NEW YORK				
		STOCK SIZE	SUPPORT BRACKET, C112				
A	1	5404 - IRIDITE WAS S101 CAUSTIC DIP	12-8 59	1001	JP	EMN	P/A RTF
ISSUE	ITEM	CHANGED FROM	DATE	CH. NO.	DRAFTS	CHECKER	ENG. APP.
TOLERANCES			SCALE:				
DEC. DIM. ±			MAXIMUM ALLOWABLE TOLERANCES HAVE BEEN DETERMINED AND ANY DEVIATIONS WILL BE CAUSE FOR REJECTION.				
FRAC. DIM. ± 1/64			REMOVE ALL BURRS AND SHARP EDGES				
ANGULAR DIM. ±							
5052 H32		DRAWN		CHECKED		FINAL APPROVAL	
S404 IRIDITE		ELEC. DES. APP.		MECH. DES. APP.		MS-981 A	
FINISH & SPEC. NO.		ELEC. DES. APP.		MECH. DES. APP.			

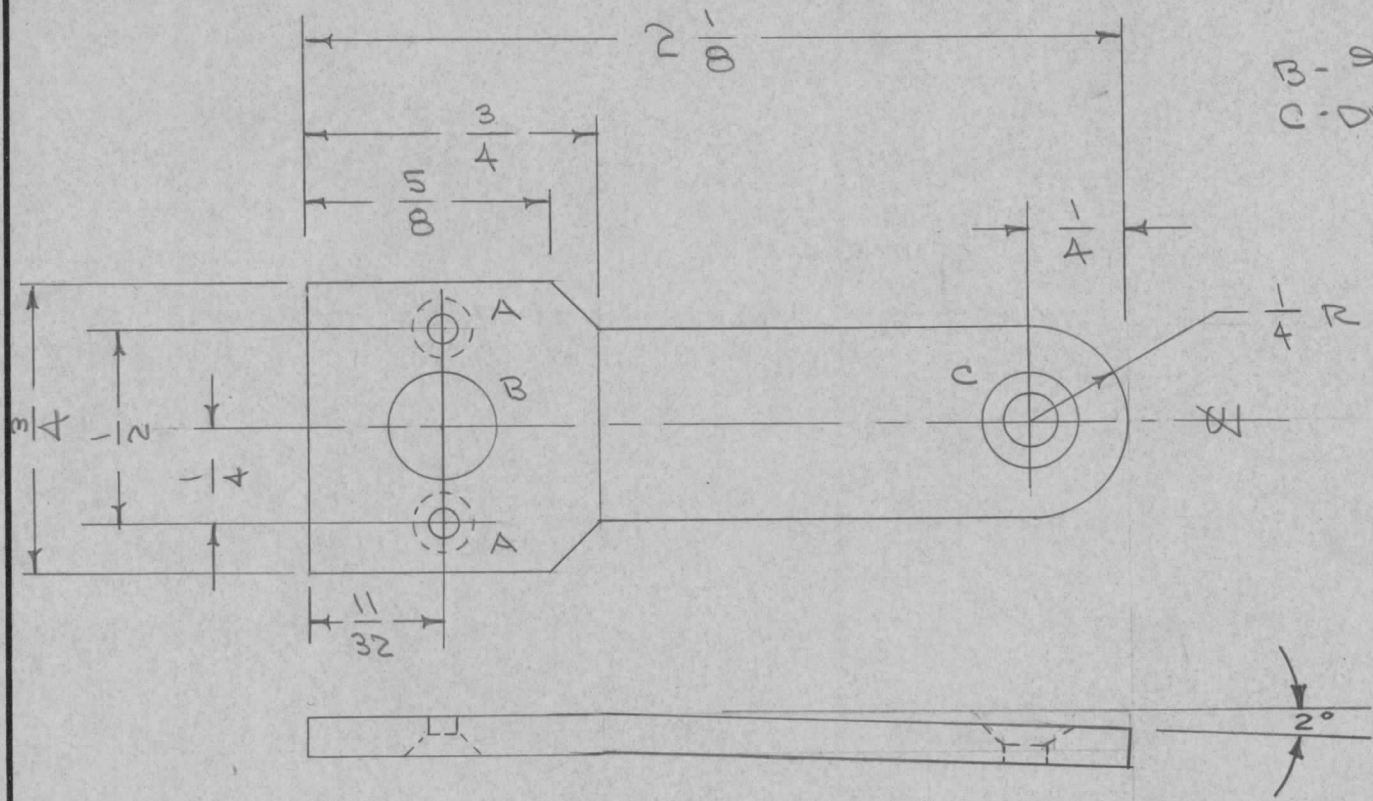
REQ. PER UNIT	610	USED ON		MS-982	B
	MODEL	ASS'Y. NO.	DATE		
1	RTF		9-7-56		



								REQ. ITEM	PART NO.	DESCRIPTION	SYMBOL	
								.019	THE TECHNICAL MATERIEL CORP. MAMARONECK. NEW YORK			
								STOCK SIZE	CONNECTOR, THERMOCOUPLE TO			
								COPPER	CMT SEC. B P/A RTF			
								MATERIAL				
ISSUE	ITEM	CHANGED FROM	DATE	CH. NO.	DRAFTS	CHECKER	ENG. APP.	COMMERCIAL SOFT	CDD 9/11/56	FAIR	WE	
TOLERANCES			SCALE:					TYPE & TEMPER	HEAT TREAT. SPEC.	DRAWN	CHECKED	FINAL APPROVAL
DEC. DIM. ±			MAXIMUM ALLOWABLE TOLERANCES HAVE BEEN DETERMINED AND ANY DEVIATIONS WILL BE CAUSE FOR REJECTION.					SILVER PLATE				
FRAC. DIM. ± 1/16			REMOVE ALL BURRS AND SHARP EDGES					.0005				MS-982 B.
ANGULAR DIM. ±								FINISH & SPEC. NO.	ELEC. DES. APP.	MECH. DES. APP.		

REQ. PER UNIT	610	USED ON		MS-983	C
	MODEL	ASS'Y. NO.	DATE		
1	RTF		8-31-56		

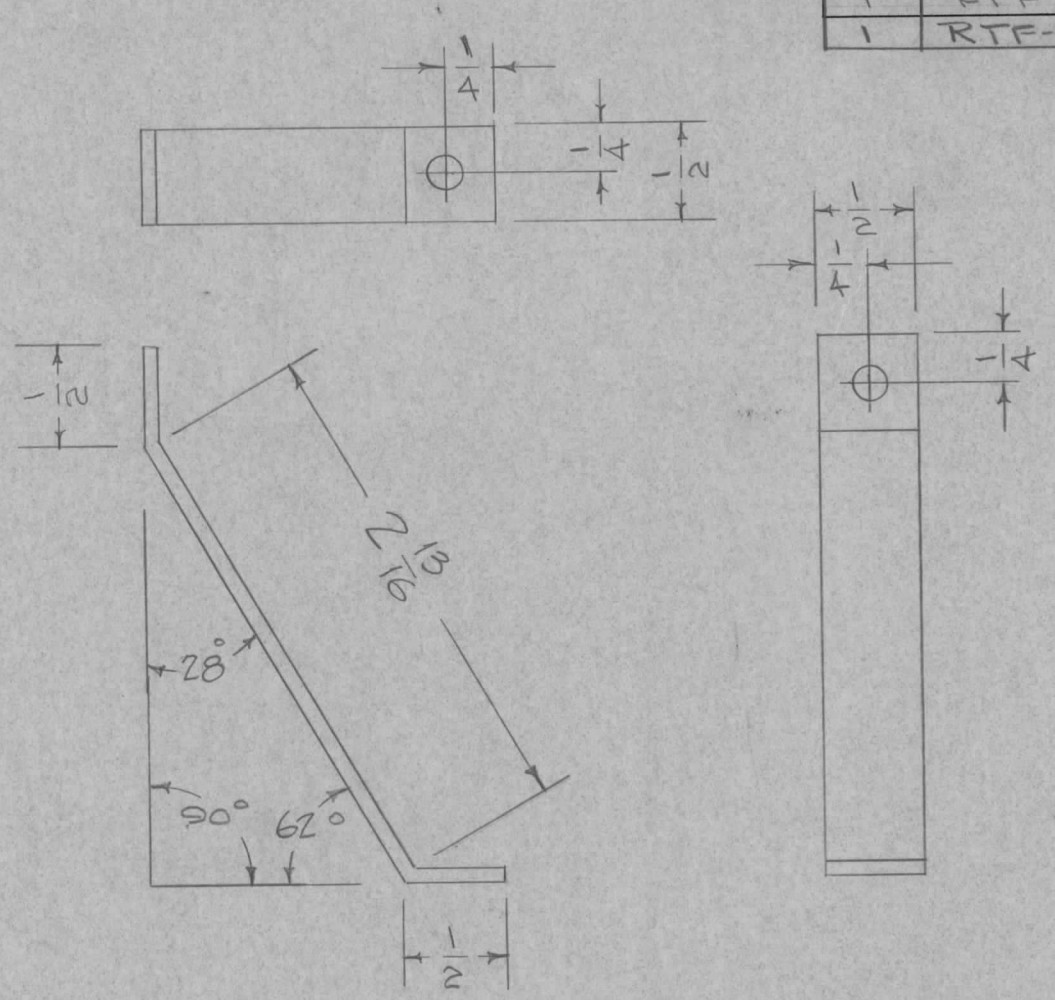
A-DRILL & C'SINK 3-48 FHS
2 REQ.
B- 9/32 (.281) DIA. 1 "
C-DRILL & C'SINK 8-32 FHS.
1 REQ.



ISSUE	ITEM	CHANGED FROM	DATE	CH. NO.	DRAFTS	CHECKER	ENG. APP.	REQ. ITEM	PART NO.	DESCRIPTION	SYMBOL				
C	1	Plating Thk. Added	10/15/57	3	16	JAD	[Signature]	.081	STOCK SIZE	THE TECHNICAL MATERIEL CORP. MAMARONECK. NEW YORK	LEVER, CAP. INC. SWITCH P/A RTF				
B	1	2° Bend Added	12/13/56	2	16	JAD	[Signature]	BRASS	MATERIAL						
A	1	MAT. WAS ALUMINUM	9/21/56	1	JAD	[Signature]	[Signature]	HALF HARD	8/31/56	JAD	[Signature]				
TOLERANCES			SCALE:			MAXIMUM ALLOWABLE TOLERANCES HAVE BEEN DETERMINED AND ANY DEVIATIONS WILL BE CAUSE FOR REJECTION. REMOVE ALL BURRS AND SHARP EDGES		TYPE & TEMPER		DRAWN		CHECKED		FINAL APPROVAL	
DEC. DIM. ±								S-135 NICKEL PLATE				[Signature]		MS-983 C	
FRAC. DIM. ± 1/64								.0003							
ANGULAR DIM. ±								FINISH & SPEC. NO.		ELEC. DES. APP.		MECH. DES. APP.			

REQ. PER UNIT	G10		USED ON
	MODEL	ASS'Y. NO.	DATE
1	RTF		9-13-56
1	RTF-2	P/A	11/20/58

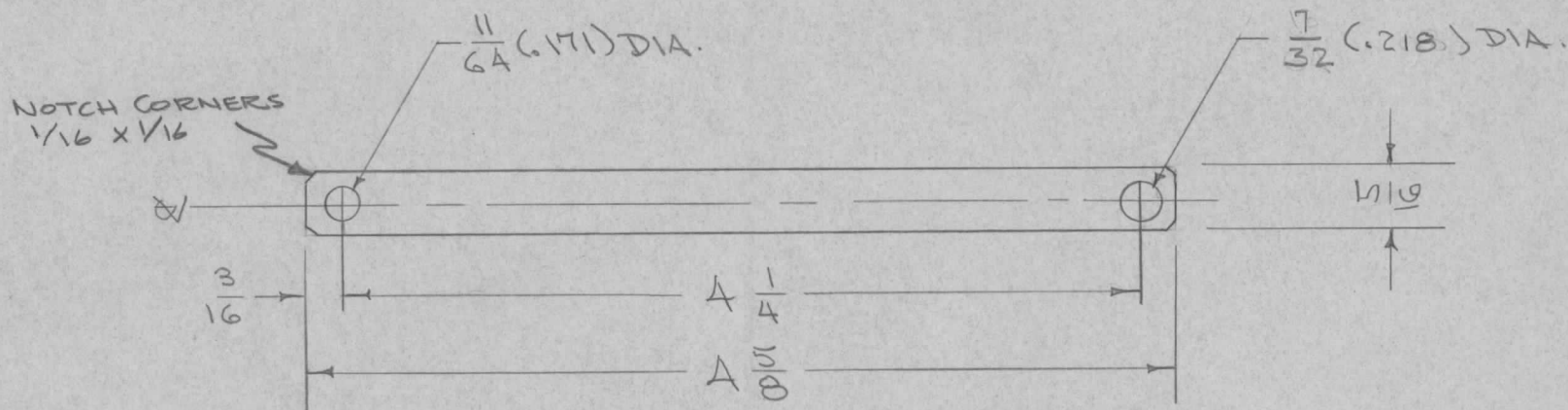
MS-984 B



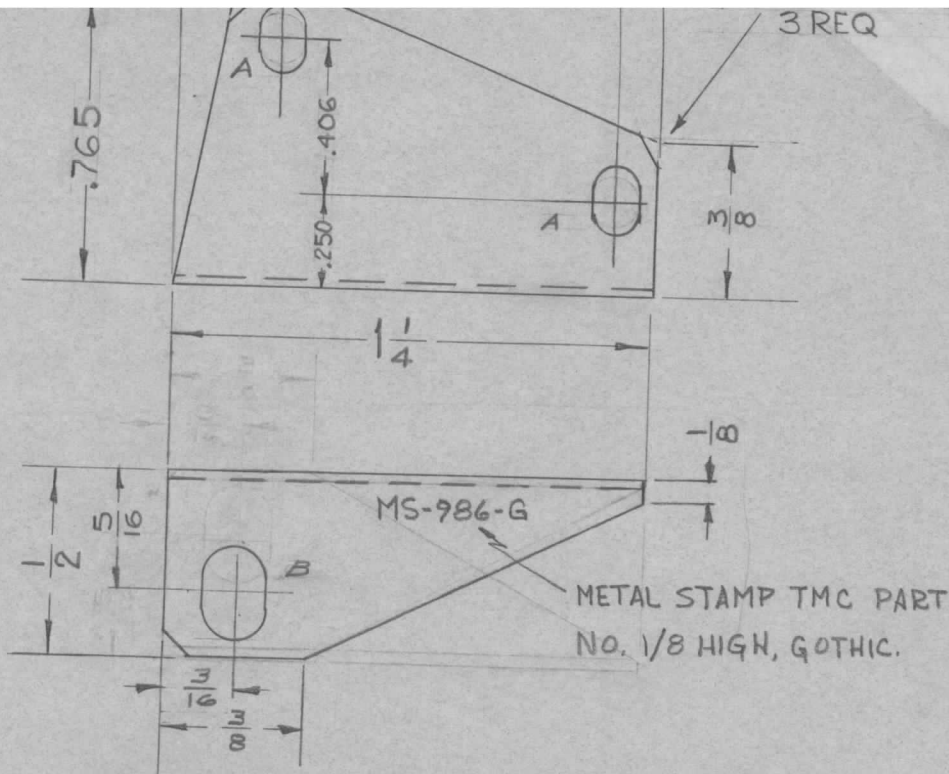
HOLES 1/64(.125) D. 2 REQ.

ISSUE	ITEM	CHANGED FROM	DATE	CH. NO.	DRAFTS	CHECKER	ENG. APP.	REQ. ITEM	PART NO.	DESCRIPTION	SYMBOL		
B	3	28° WAS 30°	3-7-61	4347	RU	gcb	<i>[Signature]</i>	.064		THE TECHNICAL MATERIEL CORP. MAMARONECK. NEW YORK	SWITCH BRACKET, REAR P/A RTF		
	2	62° WAS 60°						STOCK SIZE					
	1	2-13/16 DIM WAS 2-19/32						ALUMINUM					
A	1	5404 - IRIDITE WAS S101 - CAUSTIC DIP	12-8 59	1001	P		EMN	MATERIAL					
TOLERANCES								5052 H32		ADD 9/13/56	<i>[Signature]</i>	<i>[Signature]</i>	
SCALE:								TYPE & TEMPER	HEAT TREAT. SPEC.	DRAWN	CHECKED	FINAL APPROVAL	
DEC. DIM. ± FRAC. DIM. ± 1/64 ANGULAR DIM. ± 2°								MAXIMUM ALLOWABLE TOLERANCES HAVE BEEN DETERMINED AND ANY DEVIATIONS WILL BE CAUSE FOR REJECTION. REMOVE ALL BURRS AND SHARP EDGES					
								5404 - IRIDITE			<i>[Signature]</i>	MS-984 B	
								FINISH & SPEC. NO.	ELEC. DES. APP.	MECH. DES. APP.			

REQ. PER UNIT	G10		USED ON		MS-985	B
	MODEL	ASS'Y. NO.	DATE			
1	RTF		9-13-56			



ISSUE	ITEM	CHANGED FROM	DATE	CH. NO.	DRAFTS	CHECKER	ENG. APP.	REQ. ITEM	PART NO.	DESCRIPTION	SYMBOL		
										THE TECHNICAL MATERIEL CORP. MAMARONECK. NEW YORK			
B	1	$\frac{7}{32}$ (.218) WAS $\frac{13}{64}$ (.203)	3-8-57	2	SC	LB	AK				CONNECTOR, R.F. OUTPUT		
A	1	CORNERS NOTCHED	12/13/56	1	16	FAIR	AK			BUTTON TO J101 P/A RTF			
TOLERANCES								SCALE:					
DEC. DIM. \pm FRAC. DIM. $\pm \frac{1}{64}$ ANGULAR DIM. \pm								MAXIMUM ALLOWABLE TOLERANCES HAVE BEEN DETERMINED AND ANY DEVIATIONS WILL BE CAUSE FOR REJECTION. REMOVE ALL BURRS AND SHARP EDGES					
								COMMERCIAL SOFT		ADD 9/11/56	FAIR	WE	
								TYPE & TEMPER	HEAT TREAT. SPEC.	DRAWN	CHECKED	FINAL APPROVAL	
								SILVER PLATE .0005				MS-985	B
								FINISH & SPEC. NO.	ELEC. DES. APP.	MECH. DES. APP.			



LEGEND
 A- 1/8 x 3/16 SLOT-2
 B 3/16 x 1/4 1 SLOT

NOTE
 S 404 TRIDITE
 S-137 WELDER LIP

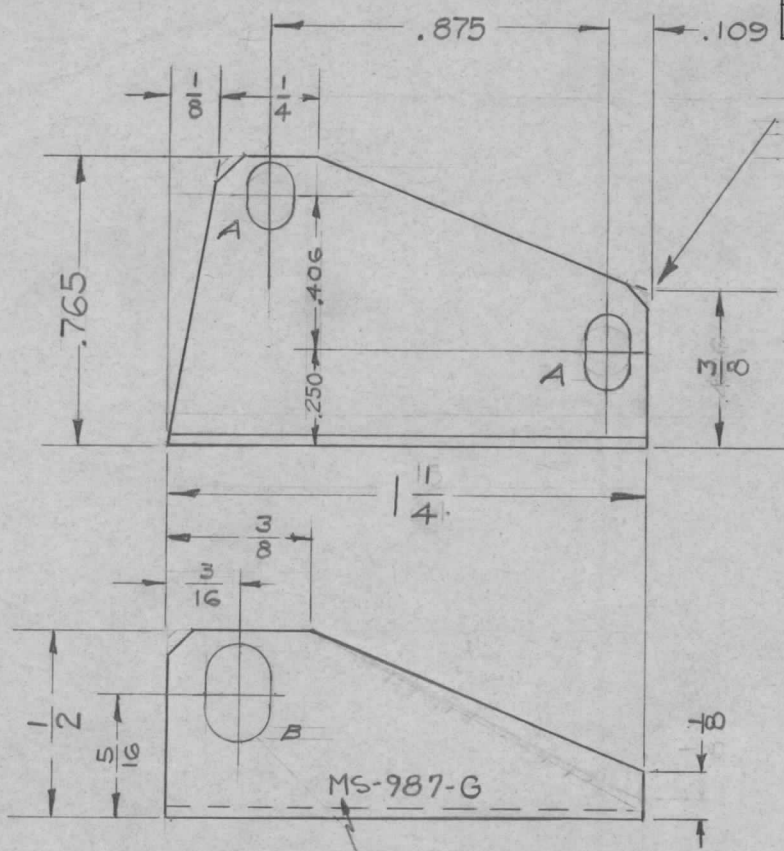
NOTICE TO PERSONS RECEIVING THIS DRAWING

THE TECHNICAL MATERIEL CORPORATION claims proprietary right in the material disclosed hereon. This drawing is issued in confidence for engineering information only and may not be reproduced or used to manufacture anything shown hereon without permission from THE TECHNICAL MATERIEL CORPORATION to the user. This drawing is loaned for mutual assistance and is subject to recall at any time.

Property of:
 THE TECHNICAL MATERIEL CORPORATION
 MAMARONECK, NEW YORK

ISSUE	ITEM	CHANGED FROM	DATE	CH. NO.	DRAFTS	CHECKER	ENG. APP.	REQ. ITEM	PART NO.	DESCRIPTION	SYMBOL
F	1	DIM ADDED (P. TWO)									
E	1										
D	2										
G	1	1/8 x 1/16 NOTCHES ADDED	4-26-63	8900							
<p>TOLERANCES</p> <p>DEC. DIM. ± .005 FRAC. DIM. ± 1/64 ANGULAR DIM. ± 2°</p>								<p>SCALE:</p> <p>MAXIMUM ALLOWABLE TOLERANCES HAVE BEEN DETERMINED AND ANY DEVIATIONS WILL BE CAUSE FOR REJECTION. REMOVE ALL BURRS AND SHARP EDGES</p>		<p>THE TECHNICAL MATERIEL CORP. MAMARONECK, NEW YORK</p>	
								<p>5052-H32</p>		<p>QDP SERIES</p>	
								<p>SEE NOTE</p>		<p>8-2-57</p>	
								<p>FINISH & SPEC. NO.</p>		<p>DRAWN</p>	
								<p>ELEC. DES. APP.</p>		<p>CHECKED</p>	
								<p>MECH. DES. APP.</p>		<p>FINAL APPROVAL</p>	
								<p>MS-986-G</p>		<p>G</p>	

REQ. PER UNIT	USED ON			MS-987	G
	MODEL	ASS'Y. NO.	DATE		
4	QDP		8-2-57		



NOTCH $\frac{1}{16} \times \frac{1}{16}$
3 REQ

LEGEND
A- $\frac{1}{8} \times \frac{3}{16}$ SLOT 2 REQ.
B- $\frac{3}{16} \times \frac{1}{4}$ 1 SLOT REQ.

NOTE
S 404 CIRIDITE DIP
S-107 LACQUER DIP

NOTICE TO PERSONS RECEIVING THIS DRAWING

THE TECHNICAL MATERIEL CORPORATION claims proprietary right in the material disclosed hereon. This drawing is issued in confidence for engineering information only and may not be reproduced or used to manufacture anything shown hereon without permission from THE TECHNICAL MATERIEL CORPORATION to the user. This drawing is loaned for mutual assistance and is subject to recall at any time.

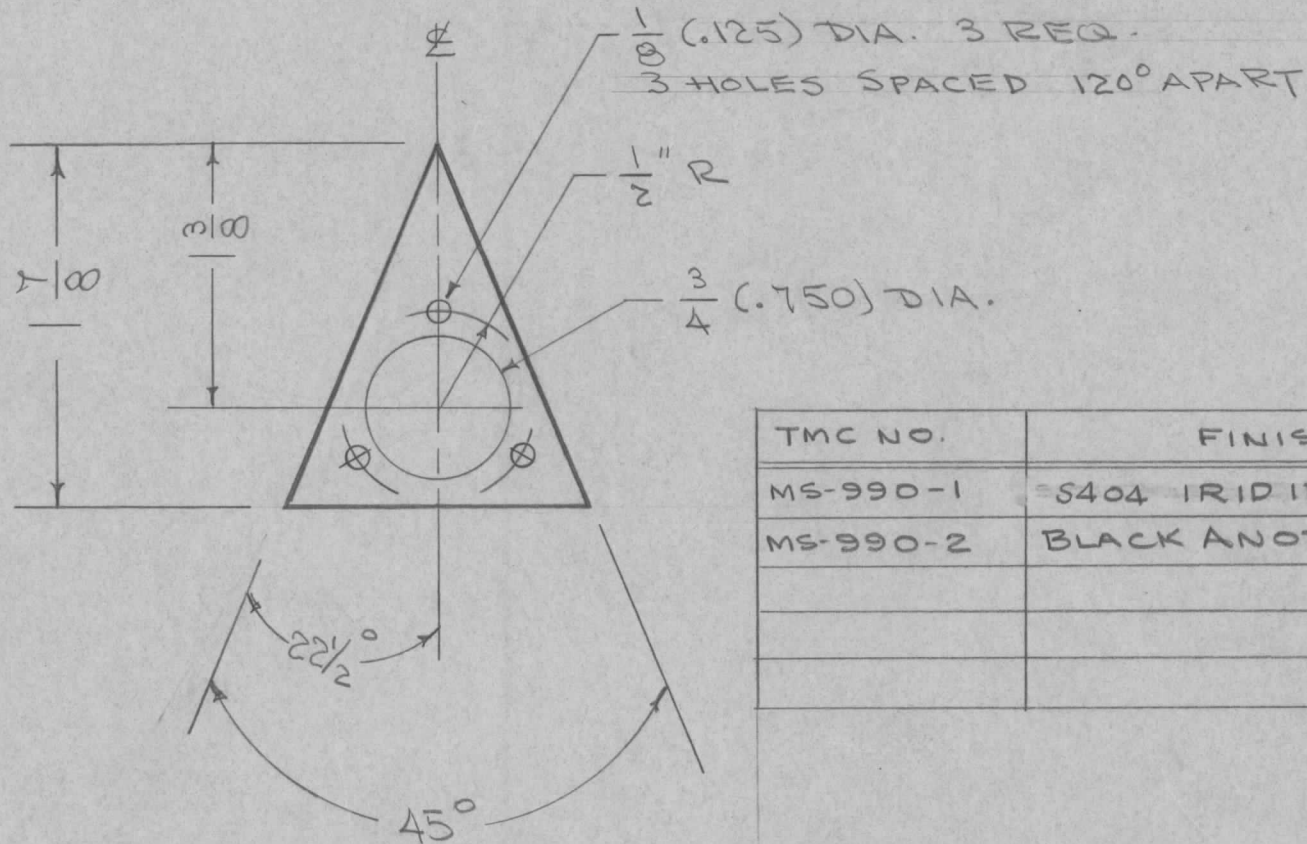
Property of:

THE TECHNICAL MATERIEL CORPORATION
MAMARONECK, NEW YORK

METAL STAMP TMC
PART NO. 1/8 HIGH, GOTHIC.

ISSUE	ITEM	CHANGED FROM	DATE	CH. NO.	DRAFTS	CHECKER	ENG. APP.	REQ. ITEM	PART NO.	DESCRIPTION	SYMBOL	
F	1	1/8 DIM. ADDED (BOTTOM)	1-7-63	7528								
E	2	S404 CIRIDITE WAS STOL CABINING DIP	12-8-59	1021								
D	1	1/2 DIA	1/3/58	2								
G	1	$\frac{1}{16} \times \frac{1}{16}$ NOTCHES ADDED	4-26-63	8900		MY						
TOLERANCES								SCALE:				
DEC. DIM. $\pm .005$ FRAC. DIM. $\pm \frac{1}{64}$ ANGULAR DIM. $\pm 2^\circ$								MAXIMUM ALLOWABLE TOLERANCES HAVE BEEN DETERMINED AND ANY DEVIATIONS WILL BE CAUSE FOR REJECTION. REMOVE ALL BURRS AND SHARP EDGES				
								5052-H32		8-2-57		
								ALUMINUM				
								THE TECHNICAL MATERIEL CORP. MAMARONECK, NEW YORK				
								BRACKET SWITCH (RIGHT)				
								QDP SERIES				
								TYPE & TEMPER	HEAT TREAT. SPEC.	DRAWN	CHECKED	FINAL APPROVAL
								SEE NOTE				
								FINISH & SPEC. NO.	ELEC. DES. APP.	MECH. DES. APP.		
												MS-987 G

MS-990-	REQ. PER UNIT	USED ON			MS-990	C
		MODEL	ASS'Y. NO.	DATE		
1	1	MSR-1,3,4		9-19-56		
2	1	RSC-3	A-1590	10-14-58		



TMC NO.	FINISH
MS-990-1	S404 IRIDITE
MS-990-2	BLACK ANODIZE

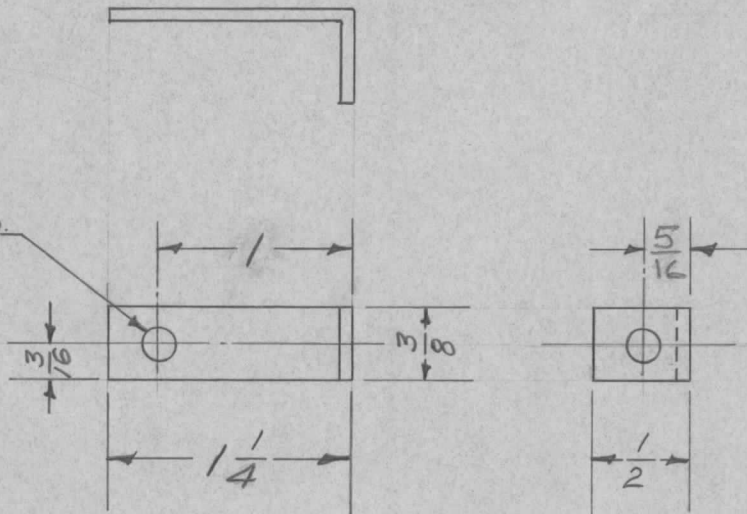
Mounts to PO-102, PO-157

ISSUE	ITEM	CHANGED FROM	DATE	CH. NO.	DRAFTS	CHECKER	ENG. APP.	REQ. ITEM	PART NO.	DESCRIPTION	SYMBOL	
C	1	S404 IRIDITE WAS S101 CAUSTIC DIP	12-8 59	1001	P		EMN		.040 THK.	THE TECHNICAL MATERIEL CORP. MAMARONECK, NEW YORK	C	
B	1	CHART ADDED-FAMILY MADE, MS-990-1 WAS MADE IN MS-990	10/14/58	2	16				STOCK SIZE			
A	1	HOLE SPACING ADDED	9/29/58	1					ALUMINUM			
TOLERANCES								MATERIAL				
DEC. DIM. \pm			SCALE:		5052 H32		//		CDD 9/19/56			
FRAC. DIM. $\pm \frac{1}{64}$			MAXIMUM ALLOWABLE TOLERANCES HAVE BEEN DETERMINED AND ANY DEVIATIONS WILL BE CAUSE FOR REJECTION.		TYPE & TEMPER		HEAT TREAT. SPEC.		DRAWN		CHECKED	
ANGULAR DIM. $\pm \frac{1}{10}$			REMOVE ALL BURRS AND SHARP EDGES		SEE CHART						FINAL APPROVAL	
								FINISH & SPEC. NO.		ELEC. DES. APP.		MECH. DES. APP.
												MS-990

REQ. PER UNIT	USED ON		
	MODEL	ASS'Y. NO.	DATE
2	MSR-1	A-1377	12-27-56

MS-993 B

$\frac{11}{64}$ (.171) D. 2 REQ.



UNLESS OTHERWISE SPECIFIED
DIMENSIONS ARE IN INCHES AND INCLUDE
CHEMICALLY APPLIED OR PLATED FINISHES

DECIMALS	TOLERANCES	FRACTIONS
.X ± .05		± 1/64
.XX ± .01		ANGLES
.XXX ± .005		± 0° 30'

CUT HERE
GUARANTEED
2-66

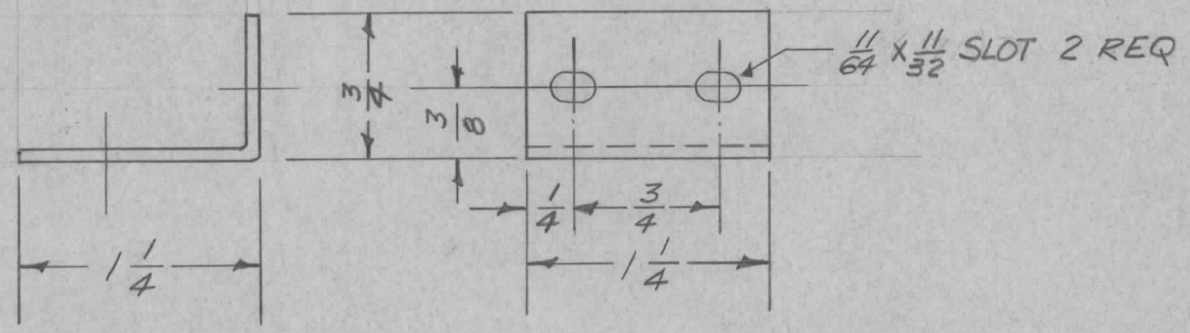
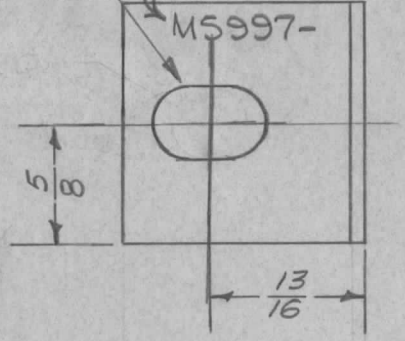
REQ.	ITEM	PART NO.	DESCRIPTION				SYMBOL
		.064 THK.	THE TECHNICAL MATERIEL CORP.				
		STOCK SIZE	MAMARONECK, NEW YORK				
B	1	5404-IRIDITE WAS S101-CAUSTIC DIP	12-8 59	1001	SP	EMN	BRA BRACKET, LE,
A	1	5/16 WAS 1/4	8/27/58	1	file	MP	TERMINAL BOARD
ISSUE	ITEM	CHANGED FROM	DATE	CH. NO.	DRAFTS	CHECKER	ENG. APP.
TOLERANCES			SCALE:				
DEC. DIM. ±			MAXIMUM ALLOWABLE TOLERANCES HAVE				
FRAC. DIM. ±			BEEN DETERMINED AND ANY DEVIATIONS				
ANGULAR DIM. ±			WILL BE CAUSE FOR REJECTION.				
			REMOVE ALL BURRS AND SHARP EDGES				
5052-H32		—H—	12-27-56	file	MP		
TYPE & TEMPER		HEAT TREAT. SPEC.	DRAWN	CHECKED	FINAL APPROVAL		
S404 IRIDITE					MS-993 B		
FINISH & SPEC. NO.		ELEC. DES. APP.	MECH. DES. APP.				

3/8 X 5/8 SLOT 1 REQ.

METAL STAMP TMC
PT. NO. 1/8 HIGH
GOTHIC, W/LATEST
REVISION LETTER

REQ. PER UNIT	USED ON		DATE
	MODEL	ASS'Y. NO.	
1	MSR-1		1-2-57
1	MSR-4		10-9-63
1	MSR-5		10-9-63

MS-997 C

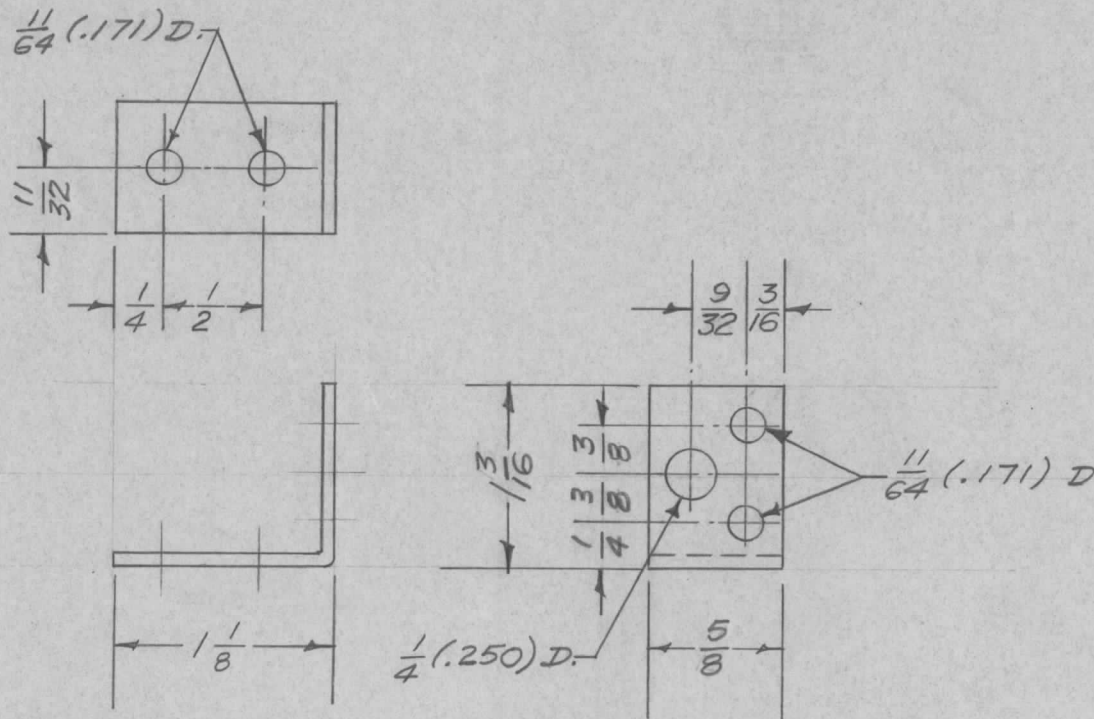


UNLESS OTHERWISE SPECIFIED DIMENSIONS ARE IN INCHES AND INCLUDE CHEMICALLY APPLIED OR PLATED FINISHES		
DECIMALS	TOLERANCES	FRACTIONS
.X ± .05		± 1/64
.XX ± .01		ANGLES ± 0° 30'
.XXX ± .005		

CUT HERE
GUARANTEED
2-66

ISSUE	ITEM	CHANGED FROM	DATE	CH. NO.	DRAFTS	CHECKER	ENG. APP.	REQ. ITEM	PART NO.	DESCRIPTION	SYMBOL	
C		METAL STAMP ADDED 3/8 X 5/8 SLOTS 1 REQ	8/9/65	14587	H.V.V.	JCP	[Signature]			THE TECHNICAL MATERIEL CORP. MAMARONECK, NEW YORK BRACKET, CONDENSER MOUNTING	C	
B	1	USED ON MSR-48-5 ADDED SLOTS WERE 1/8 DIA HOLES	9/23/63	10033	SD	[Signature]		.064 THK.	STOCK SIZE			
A	1	S404 IRIDITE WAS S1.01 CAUSTIC DIP	12-8 59	1001	P	EMN		ALUMINUM	MATERIAL			
								5052-H32	ff			
TOLERANCES			SCALE: 1:1					5052-H32	ff	161-2-57	JMD	AKO
DEC. DIM. ± FRAC. DIM. ± ANGULAR DIM. ±			MAXIMUM ALLOWABLE TOLERANCES HAVE BEEN DETERMINED AND ANY DEVIATIONS WILL BE CAUSE FOR REJECTION. REMOVE ALL BURRS AND SHARP EDGES					TYPE & TEMPER	HEAT TREAT. SPEC.	DRAWN	CHECKED	FINAL APPROVAL
								S404 IRIDITE				MS-997 C
								FINISH & SPEC. NO.		ELEC. DES. APP.	MECH. DES. APP.	

REQ. PER UNIT	USED ON			MS-998	B
	MODEL	ASS'Y. NO.	DATE		
2	MSR-1		1-2-57		



ISSUE	ITEM	CHANGED FROM	DATE	CH. NO.	DRAFTS	CHECKER	ENG. APP.	REQ. ITEM	PART NO.	DESCRIPTION	SYMBOL	
B	1	S404- IRIDITE WAS S101-CAUSTIC DIP	12-8 59	1001	P		EMN		.064 THK.	THE TECHNICAL MATERIEL CORP. MAMARONECK, NEW YORK		
A	1	5/8 WAS 11/16	9/25/57	1	16	HADE	AK		ALUMINUM	BRACKET, RELAY MTG.		
TOLERANCES								MATERIAL				
DEC. DIM. \pm			SCALE:					5052-H32	— # —	16-1-2-57	HADE	AK
FRAC. DIM. \pm V64			MAXIMUM ALLOWABLE TOLERANCES HAVE BEEN DETERMINED AND ANY DEVIATIONS WILL BE CAUSE FOR REJECTION.					TYPE & TEMPER	HEAT TREAT. SPEC.	DRAWN	CHECKED	FINAL APPROVAL
ANGULAR DIM. \pm			REMOVE ALL BURRS AND SHARP EDGES					S404 IRIDITE				MS-998 B
								FINISH & SPEC. NO.	ELEC. DES. APP.	MECH. DES. APP.		