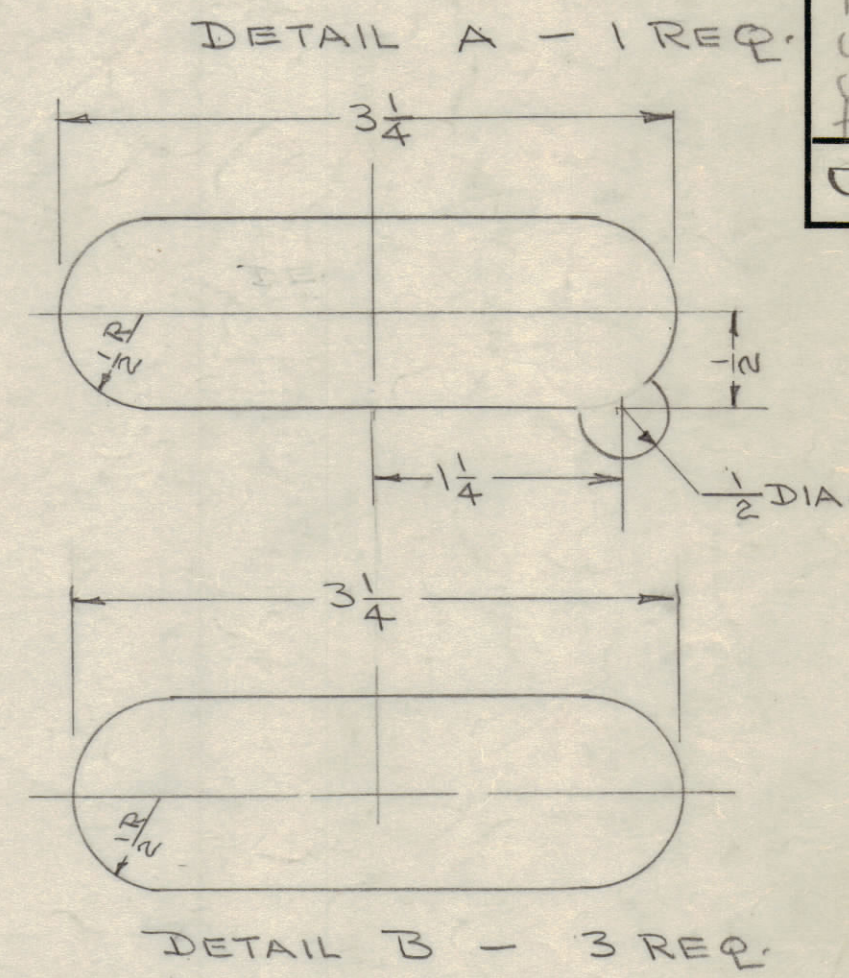
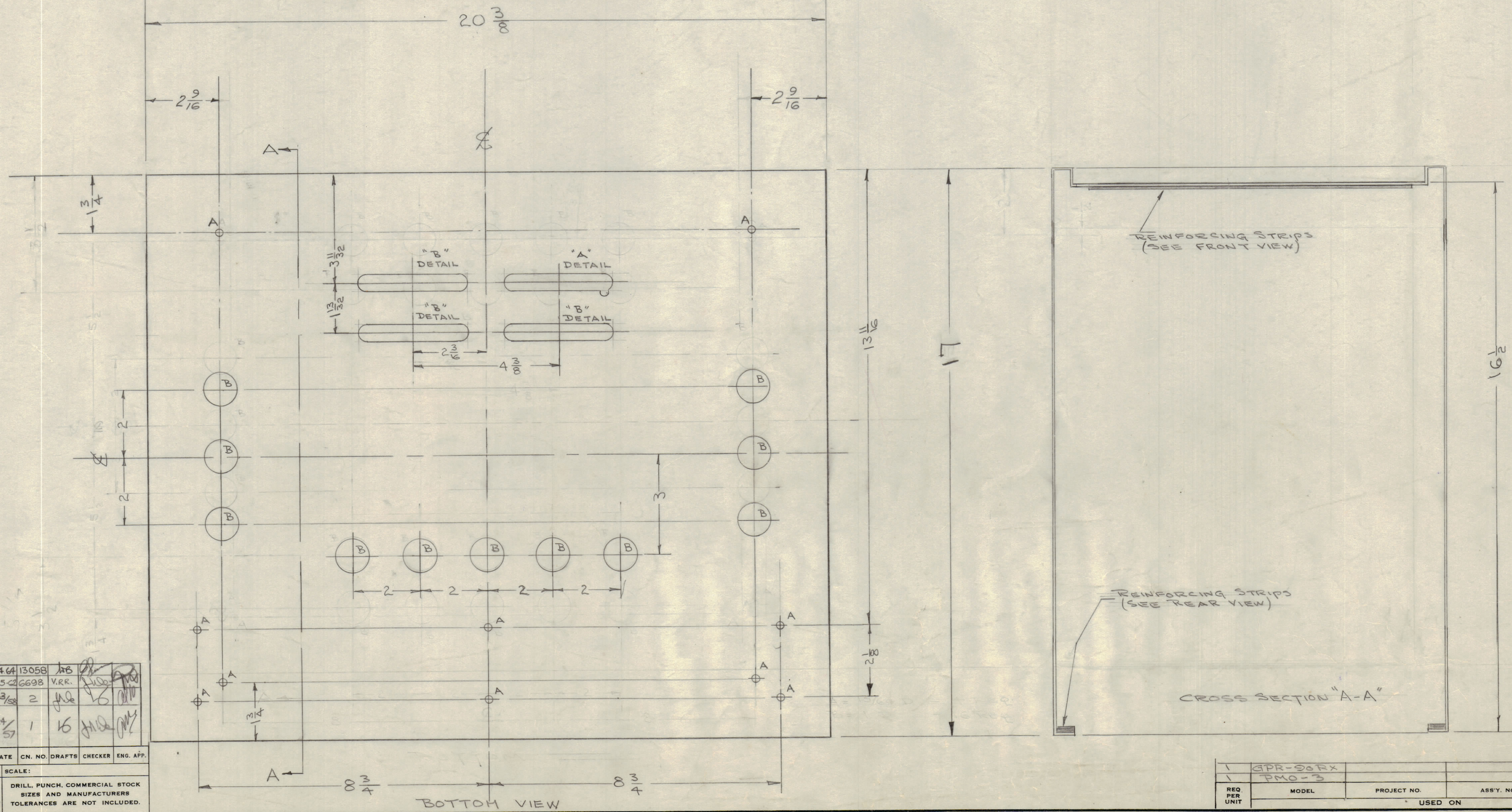
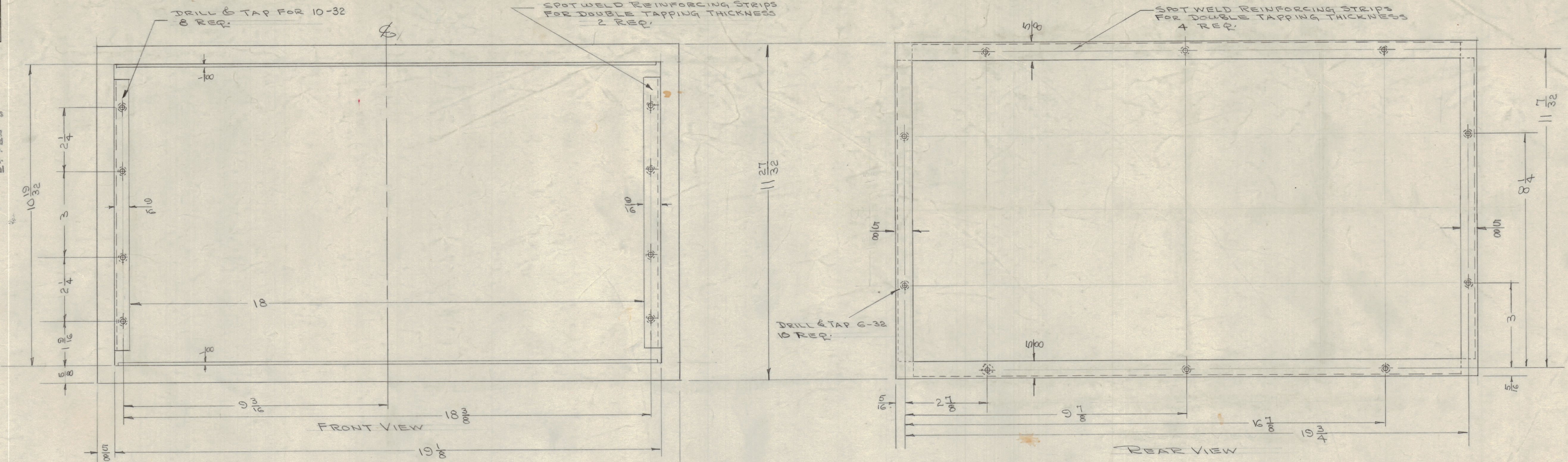


IF IT IS FOUND DESIRABLE TO CHANGE ANY TOLERANCE OR OTHER DETAIL SPECIFIED ON THIS DRAWING NOTIFY THE PURCHASER PROMPTLY.
 MAXIMUM ALLOWABLE TOLERANCES HAVE BEEN DETERMINED AND DEVIATIONS WILL BE CAUSE FOR REJECTION. REMOVE ALL BURRS AND SHARP EDGES

NOTICE TO PERSONS RECEIVING THIS DRAWING

THE TECHNICAL MATERIEL CORPORATION claims proprietary right in the material disclosed herein. This drawing is issued in confidence for engineering information only and may not be reproduced or used to manufacture anything shown hereon without permission from THE TECHNICAL MATERIEL CORPORATION to the user. This drawing is loaned for mutual assistance and is subject to recall at any time.

Property of:
 THE TECHNICAL MATERIEL CORPORATION
 MAMARONECK, NEW YORK



A = 1 3/4 DIA. - 10 HOLES REQ.
 B = 1 DIA. - 11 " "

FINISH
 S-114 ZINC CHROMATE PRIMER ALL SURFACES
 S-220 RCAF GRAY SEMI-GLOSS ENAMEL ALL INSIDE SURFACES
 S-254 RCAF GRAY WRINKLE ENAMEL ALL OUTSIDE SURFACES
 OR PRIME & PAINT TO CUSTOMERS SPECIFICATION.

REF: MS-995 (REAR COVER)

REQ. ITEM	PART NO.	DESCRIPTION	SYMBOL
1	062	THE TECHNICAL MATERIEL CORP. MAMARONECK, NEW YORK	
STOCK SIZE		CABINET	
MATERIAL		STEEL	
WEIGHT PER PC			
TYPE & TEMPER		MILD	
HEAT TREAT. SPEC.			
FINISH & SPEC. NO.		SEE NOTE	

ISSUE	ITEM	CHANGED FROM	DATE	CN. NO.	DRAFTS	CHECKER	ENG. APP.
D	1	SEAM LINE #2 DIM. DELE.	12/4/54	13058	VB		
C	1	DRILL & TAP FOR 10-32 WAS 10-24	5-25-54	6698	VRR.		
B	2	8X "A" HOLES ADDED	4/3/54	2	VB		
A	3	"A" & "B" DETAILS ADDED	1/24/54	1	VB		
A	2	CROSS SECTION A-A DESIGN CHANGED	1/24/54	1	VB		
A	1	"B" HOLES MOVED	1/24/54	1	VB		

SCALE:
 DRILL, PUNCH, COMMERCIAL STOCK SIZES AND MANUFACTURERS TOLERANCES ARE NOT INCLUDED.

REQ. PER UNIT	MODEL	PROJECT NO.	ASSY. NO.	DATE
1	GPR-90RX			4-3-58
1	PMO-3			12-28-56

MS-994 D