

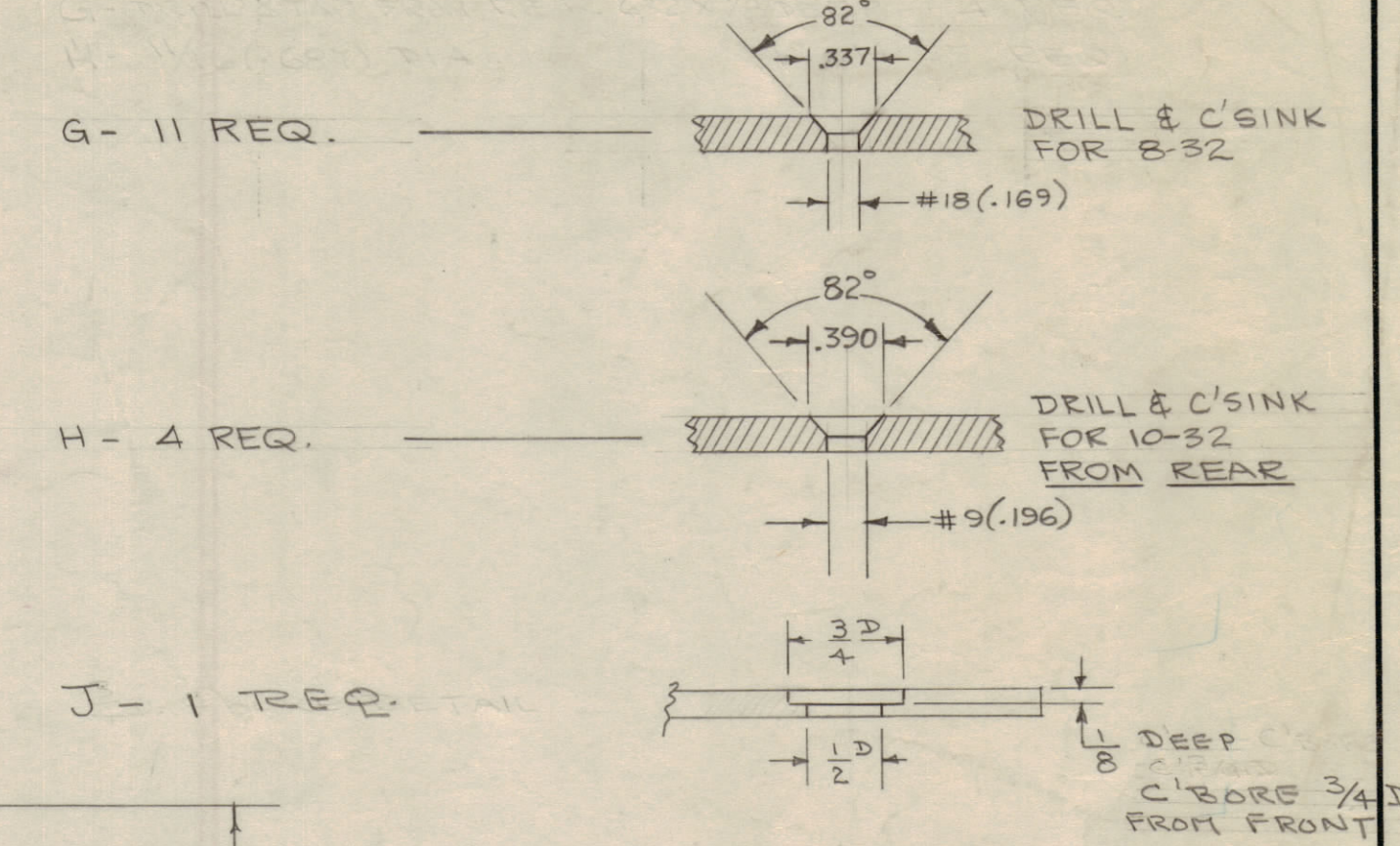
IF IT IS FOUND DESIRABLE TO CHANGE ANY TOLERANCE OR OTHER DETAIL SPECIFIED ON THIS DRAWING NOTIFY THE PURCHASER PROMPTLY.  
 MAXIMUM ALLOWABLE TOLERANCES HAVE BEEN DETERMINED AND DEVIATIONS WILL BE CAUSE FOR REJECTION. REMOVE ALL BURRS AND SHARP EDGES.

**NOTICE TO PERSONS RECEIVING THIS DRAWING**

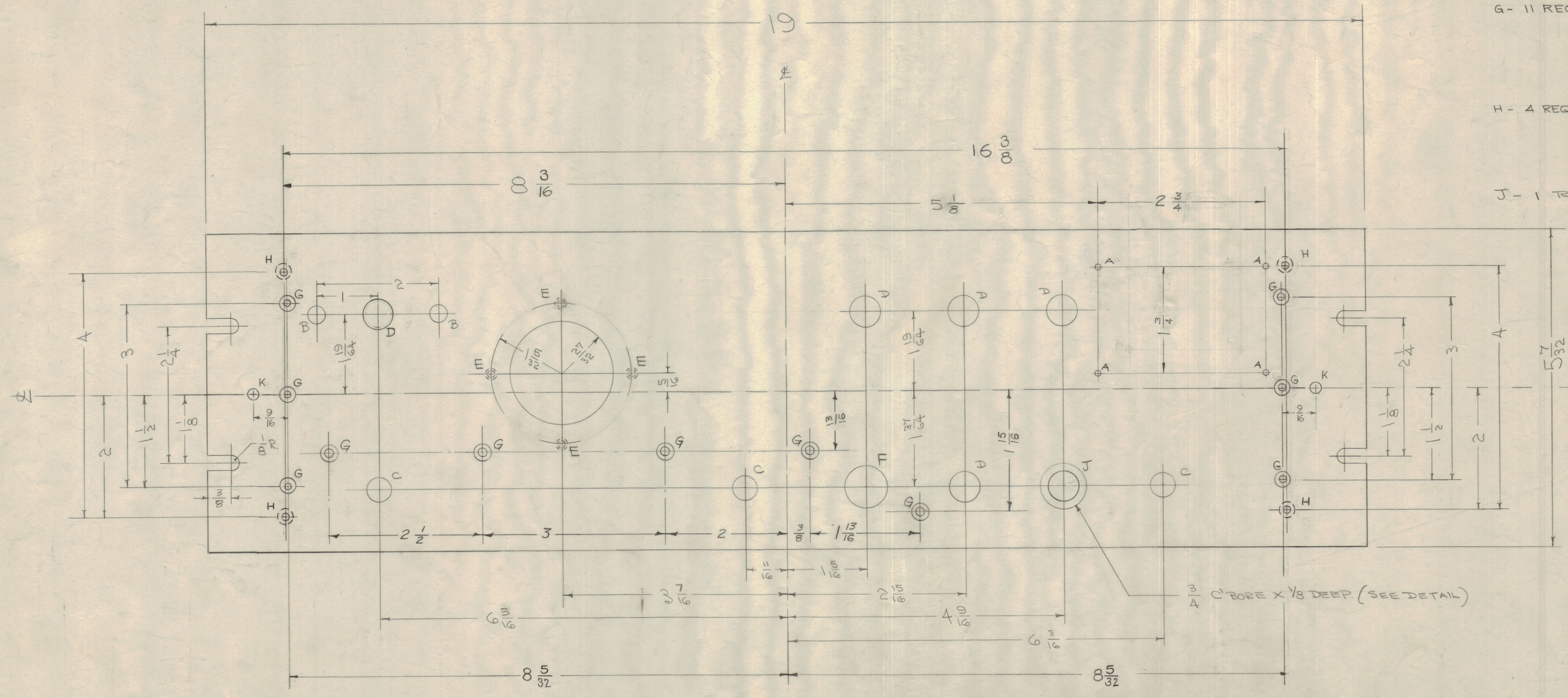
THE TECHNICAL MATERIEL CORPORATION claims proprietary right in the material disclosed herein. This drawing is issued in confidence for engineering information only and may not be reproduced or used to manufacture anything shown hereon without permission from THE TECHNICAL MATERIEL CORPORATION to the user. This drawing is loaned for mutual assistance and is subject to recall at any time.

Property of:  
 THE TECHNICAL MATERIEL CORPORATION  
 MAMARONECK, NEW YORK

- A - #47 (.078) DIA. 4 HOLES REQ.
- B - 9/32 (.281) " 2 " "
- C - 25/64 (.390) " 3 " "
- D - 1/2 (.500) " 5 " "
- E - DRILL & TAP FROM REAR 6-32 X 1/8 DP. - 4 REQ.
- F - 1/16 (.687) DIA. 1 HOLES REQ.



K - 3/16 DIA. 2 Req.



NOTE: FINISH -  
 S-404 VEL IRIDITE  
 FRONT & EDGES ONLY { 514 ZINC CHROMATE PRIMER  
 5115 SMOOTH GREY ENAMEL  
 OR PRIME & PAINT TO CUSTOMERS SPECIFICATIONS

REF. DWG. LD-306

G	1	Ø K HOLES ADDED	7-6-51	5161	6-D.L.	<i>[Signature]</i>
F	2	Ø H HOLES RELOCATED	7-1-61	4050	RU	<i>[Signature]</i>
I	1	Ø G HOLES RELOCATED	12-9			<i>[Signature]</i>
E	1	S-404 VEL IRIDITE WAS S-101 CAUSTIC DIP	12-9	1001	AG	<i>[Signature]</i>
D	1	FOUR A" (#47) HOLES RELOCATED	12-9	4	AG	<i>[Signature]</i>
C	1	C' BORE DETAIL ADDED	12-9	3	AG	<i>[Signature]</i>
B	1	CHART DELETED	12-9	2	AG	<i>[Signature]</i>
A	1	CHART ADDED	7-6-51	1	AG	<i>[Signature]</i>

ISSUE	ITEM	CHANGED FROM	DATE	CN. NO.	DRAFTS	CHECKER	ENG. APP.
TOLERANCES							
SCALE:							
ALL OTHERS	DEC. DIM. ±	DRILL, PUNCH, COMMERCIAL STOCK SIZES AND MANUFACTURERS TOLERANCES ARE NOT INCLUDED.					
	FRAC. DIM. ± 1/64						
	ANGULAR DIM. ±						

1	MSR-1,3	PROJECT NO.	ASS'Y. NO.	9-19-56	DATE
REQ. PER UNIT	MODEL	PROJECT NO.	ASS'Y. NO.	DATE	USED ON

REQ. ITEM	PART NO.	DESCRIPTION	SYMBOL
	3/16 THICK	THE TECHNICAL MATERIEL CORP. MAMARONECK, NEW YORK	
	ALUMINUM	PANEL, FRONT	
	MATERIAL	WEIGHT PER PC.	MSR-1,3
	2024-T3		
	TYPE & TEMPER	CND 9/19/56	
	HEAT TREAT. SPEC.	DRAWN	ELEC. DES. APP.
	SER. NOTE	CHECKED	MECH. DES. APP.
	FINISH & SPEC. NO.		FINAL APPROVAL
			MS-989

MS-989 G