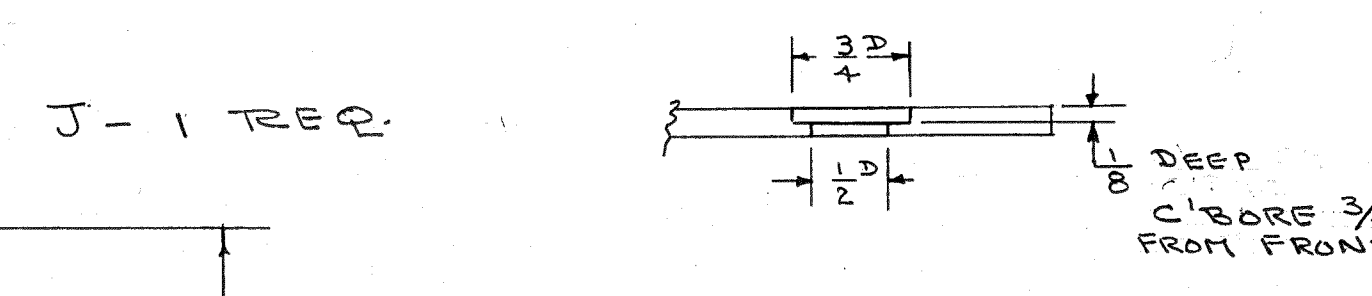
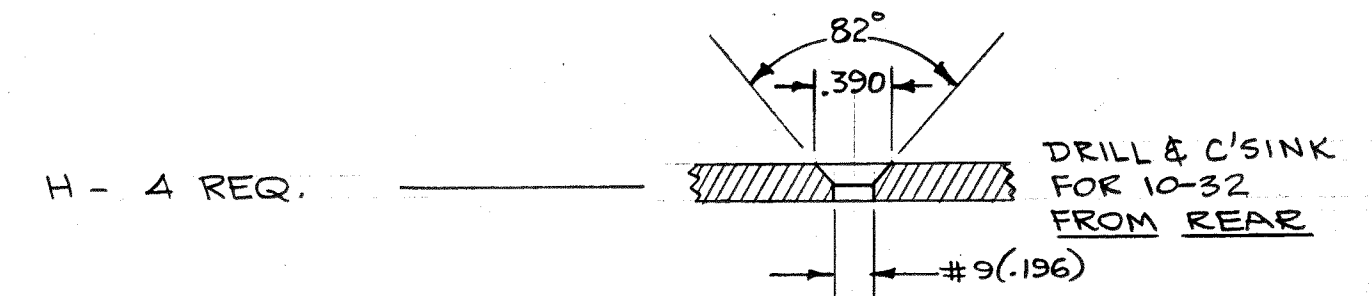
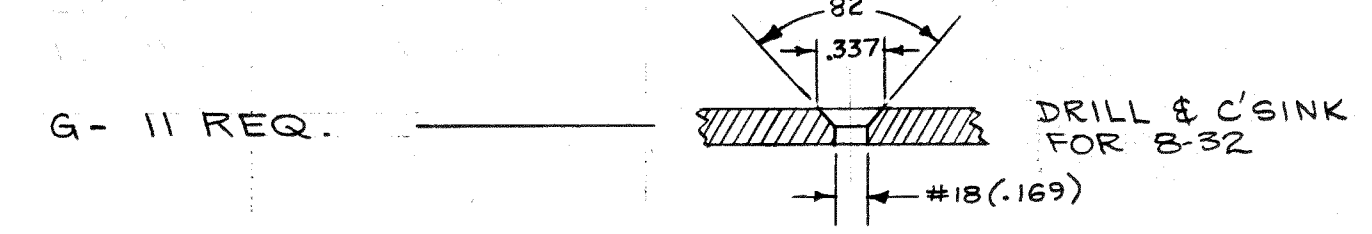


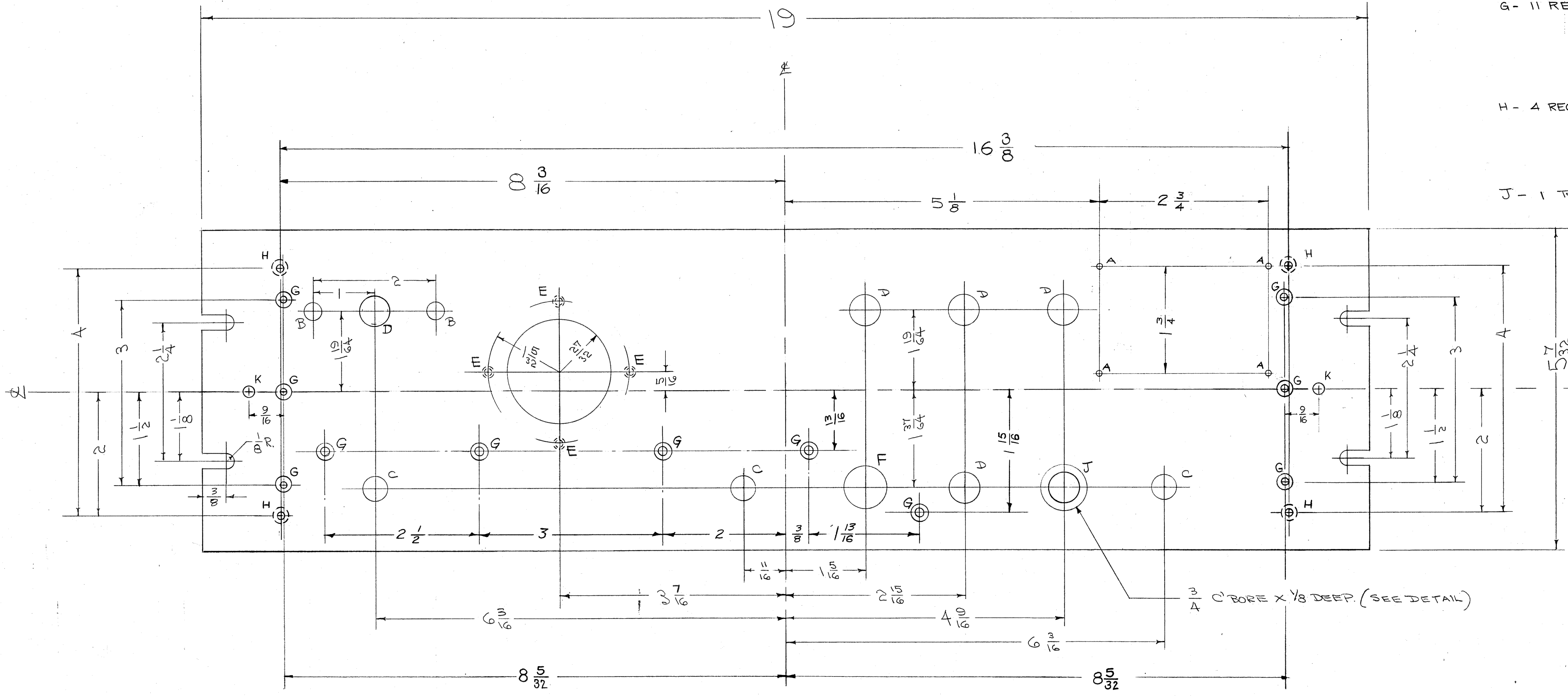
IF IT IS FOUND DESIRABLE TO CHANGE ANY TOLERANCE OR OTHER DETAIL SPECIFIED ON THIS DRAWING NOTIFY THE PURCHASER PROMPTLY.  
 MAXIMUM ALLOWABLE TOLERANCES HAVE BEEN DETERMINED AND DEVIATIONS WILL BE CAUSE FOR REJECTION. REMOVE ALL BURRS AND SHARP EDGES

NOTICE TO PERSONS RECEIVING THIS DRAWING  
 THE TECHNICAL MATERIEL CORPORATION claims proprietary right in the material disclosed hereon. This drawing is issued in confidence for engineering information only and may not be reproduced or used to manufacture anything shown hereon without permission from THE TECHNICAL MATERIEL CORPORATION to the user. This patent is loaned for mutual assistance and is subject to recall at any time.  
 Property of:  
 THE TECHNICAL MATERIEL CORPORATION  
 MAMARONECK, NEW YORK

- A - #47 (.078) DIA. 4 HOLES REQ.
- B - 9/32 (.281) " 2 " "
- C - 25/64 (.390) " 3 " "
- D - 1/2 (.500) " 5 " "
- E - DRILL & TAP FROM REAR 6-32 x 1/8 DP. - 4 REQ.
- F - 1/16 (.687) DIA. 1 HOLES REQ.



K - 3/16 DIA. 2 Req.



NOTE: FINISH - S-404 VEL. IRIDITE  
 FRONT & EDGES ONLY { 314 ZINC CHROMATE PRIMER  
 315 SMOOTH GREY ENAMEL  
 OR PRIME & PAINT TO CUSTOMER'S SPECIFICATIONS

G	1	⊙ K HOLES ADDED	7-6-51	5161	6-D.L.	MSR-1,3
F	2	⊙ H HOLES RELOCATED	1-6	4050	RU	MSR-1,3
I	1	⊙ G METG. HOLES RELOCATED				
E	1	S-404 VEL. IRIDITE FINISH	12/8/57	1001	AG	EMM
D	1	S-101 CAUSTIC DIP	9/1/58	4	MSR	MSR-1,3
C	1	FOUR #4 (.047) HOLES RELOCATED				
C	1	C'BORE DETAIL ADDED	1/16/57	3	MSR	MSR-1,3
B	1	CHART DELETED	8/22/57	2	EC	
A	1	CHART ADDED	7/2/50	1	MSR	MSR-1,3

ISSUE ITEM	CHANGED FROM	DATE	CH. NO.	DRAFTS	CHECKER	ENG. APP.
TOLERANCES		SCALE:				
ALL OTHERS	DEC. DIM. ±	DRILL, PUNCH, COMMERCIAL STOCK				
	FRAC. DIM. ± 1/64	SIZES AND MANUFACTURERS				
	ANGULAR DIM. ±	TOLERANCES ARE NOT INCLUDED.				

REF. DWG. LD-306

1	MSR-1,3	PROJECT NO.	ASSY. NO.	9-19-56	DATE
REQ. PER UNIT	MODEL	PROJECT NO.	ASSY. NO.	DATE	USED ON

REQ. ITEM	PART NO.	DESCRIPTION	SYMBOL
3/16 THICK		THE TECHNICAL MATERIEL CORP.	
STOCK SIZE		MAMARONECK, NEW YORK	
ALUMINUM	#	PANEL, FRONT	
MATERIAL	WEIGHT PER PC	MSR-1,3	
2024-T3			
TYPE & TEMPER	CD 9/5/56		
	DRAWN	ELEC. DES. APP.	MECH. DES. APP.
	CHECKED		
HEAT TREAT. SPEC.			
SEE NOTE			
FINISH & SPEC. NO.			

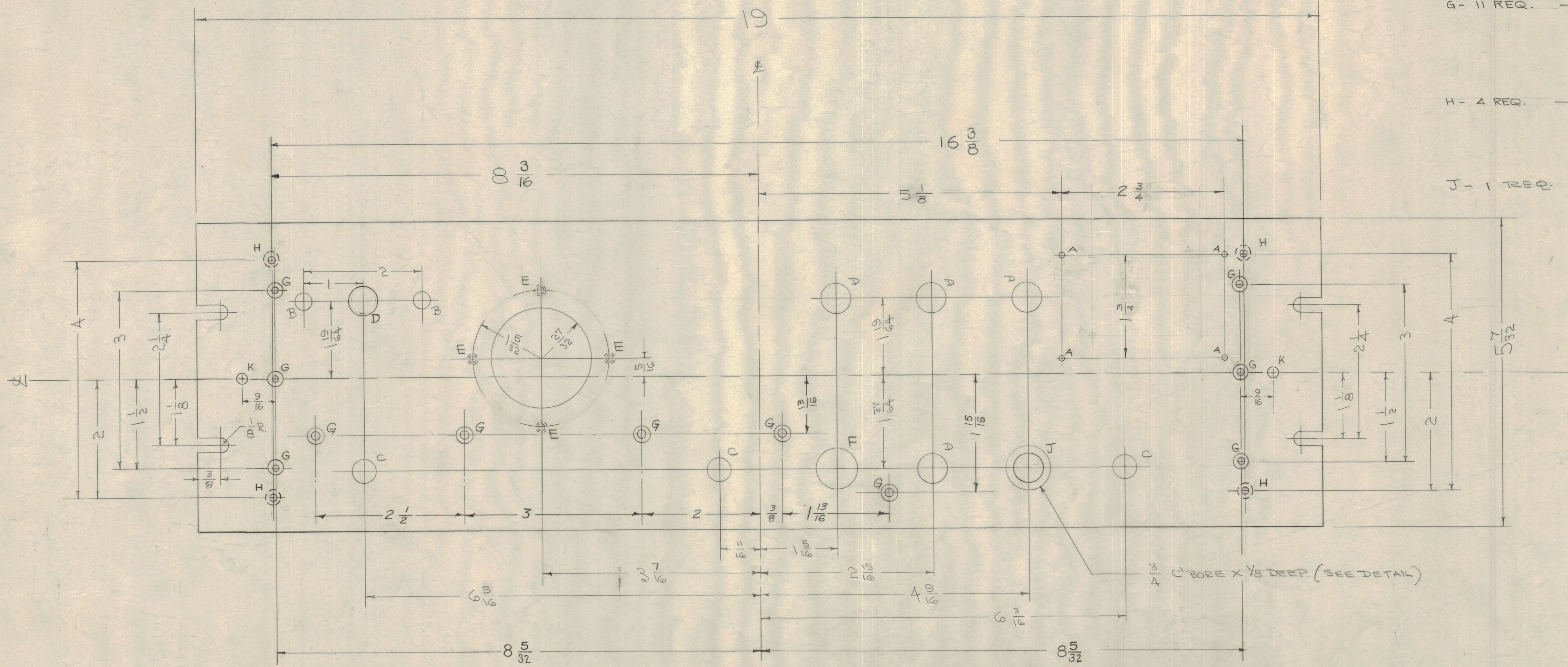
MSR-1,3

IF IT IS FOUND DESIRABLE TO CHANGE ANY TOLERANCE OR OTHER DETAIL SPECIFIED ON THIS DRAWING NOTIFY THE PURCHASER PROMPTLY.  
 MAXIMUM ALLOWABLE TOLERANCES HAVE BEEN DETERMINED AND DEVIATIONS WILL BE CAUSE FOR REJECTION. REMOVE ALL BURRS AND SHARP EDGES.

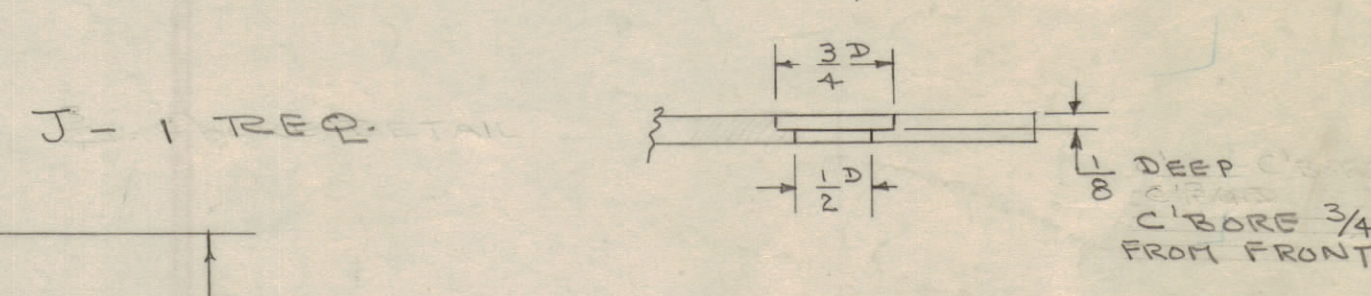
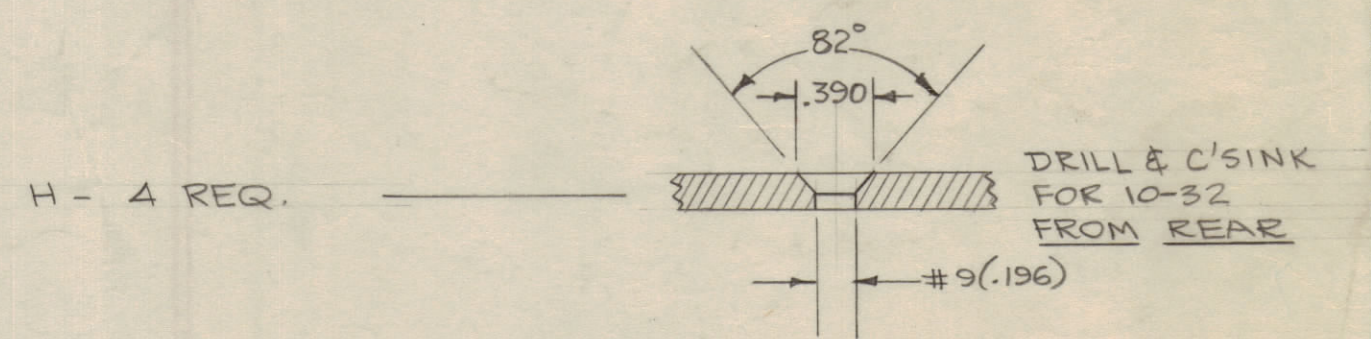
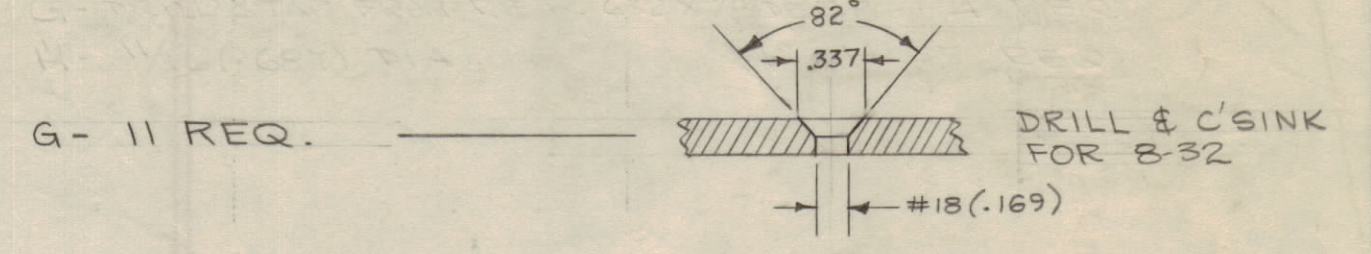
**NOTICE TO PERSONS RECEIVING THIS DRAWING**

THE TECHNICAL MATERIEL CORPORATION claims proprietary right in the material disclosed herein. This drawing is issued in confidence for engineering information only and may not be reproduced or used to manufacture anything shown hereon without permission from THE TECHNICAL MATERIEL CORPORATION to the user. This drawing is loaned for mutual assistance and is subject to recall at any time.

Property of:  
 THE TECHNICAL MATERIEL CORPORATION  
 MAMARONECK, NEW YORK



- A - #47 (.078) DIA. 4 HOLES REQ.
- B - 9/32 (.281) " 2 " "
- C - 25/64 (.390) " 3 " "
- D - 1/2 (.500) " 5 " "
- E - DRILL & TAP FROM REAR 6-32 X 1/8 DP. - 4 REQ.
- F - 1/16 (.687) DIA. 1 HOLES REQ.



K - 3/16 DIA. 2 Req.

NOTE: FINISH -  
 S-404 VEL. IRIDITE  
 FRONT & EDGES ONLY { 514 ZINC CHROMATE PRIMER  
 5115 SMOOTH GREY ENAMEL  
 OR PRIME & PAINT TO CUSTOMERS SPECIFICATIONS

REF. DWG. LD-306

G	1	Ø K HOLES ADDED	7-6-51	5161	6-D.L.	
F	2	Ø H HOLES RELOCATED	7-1-61	4050	RU	
F	1	Ø G HOLES RELOCATED				
E	1	S-404 VEL. IRIDITE WAS	7-9-59	1001	AG	EMW
E	1	S-101 CAUSTIC DIP	7-9-59			
D	1	FOUR 'A' (#47) HOLES RELOCATED	7-9-59	4	MC	
C	1	C'BORE DETAIL ADDED	7-9-59	3	MC	
B	1	CHART DELETED	7-9-59	2	SC	
A	1	CHART ADDED	7-9-59	1	MC	

ISSUE	ITEM	CHANGED FROM	DATE	CN. NO.	DRAFTS	CHECKER	ENG. APP.
TOLERANCES							
SCALE:							
ALL OTHERS	DEC. DIM. ±	DRILL, PUNCH, COMMERCIAL STOCK SIZES AND MANUFACTURERS TOLERANCES ARE NOT INCLUDED.					
	FRAC. DIM. ± 1/64						
	ANGULAR DIM. ±						

1	MSR-1,3	PROJECT NO.	ASS'Y. NO.	DATE
REQ. PER UNIT	MODEL	PROJECT NO.	ASS'Y. NO.	DATE
USED ON				

REQ. ITEM	PART NO.	DESCRIPTION	SYMBOL
	3/16 THICK	THE TECHNICAL MATERIEL CORP. MAMARONECK, NEW YORK	
STOCK SIZE			
ALUMINUM	#	PANEL, FRONT	
MATERIAL	WEIGHT PER PC.	MSR-1,3	
TYPE & TEMPER			
	2024-T3	DRAWN	ELEC. DES. APP. MECH. DES. APP.
HEAT TREAT. SPEC.			
	SEE NOTE	CHECKED	FINAL APPROVAL
FINISH & SPEC. NO.			

MS-989 G