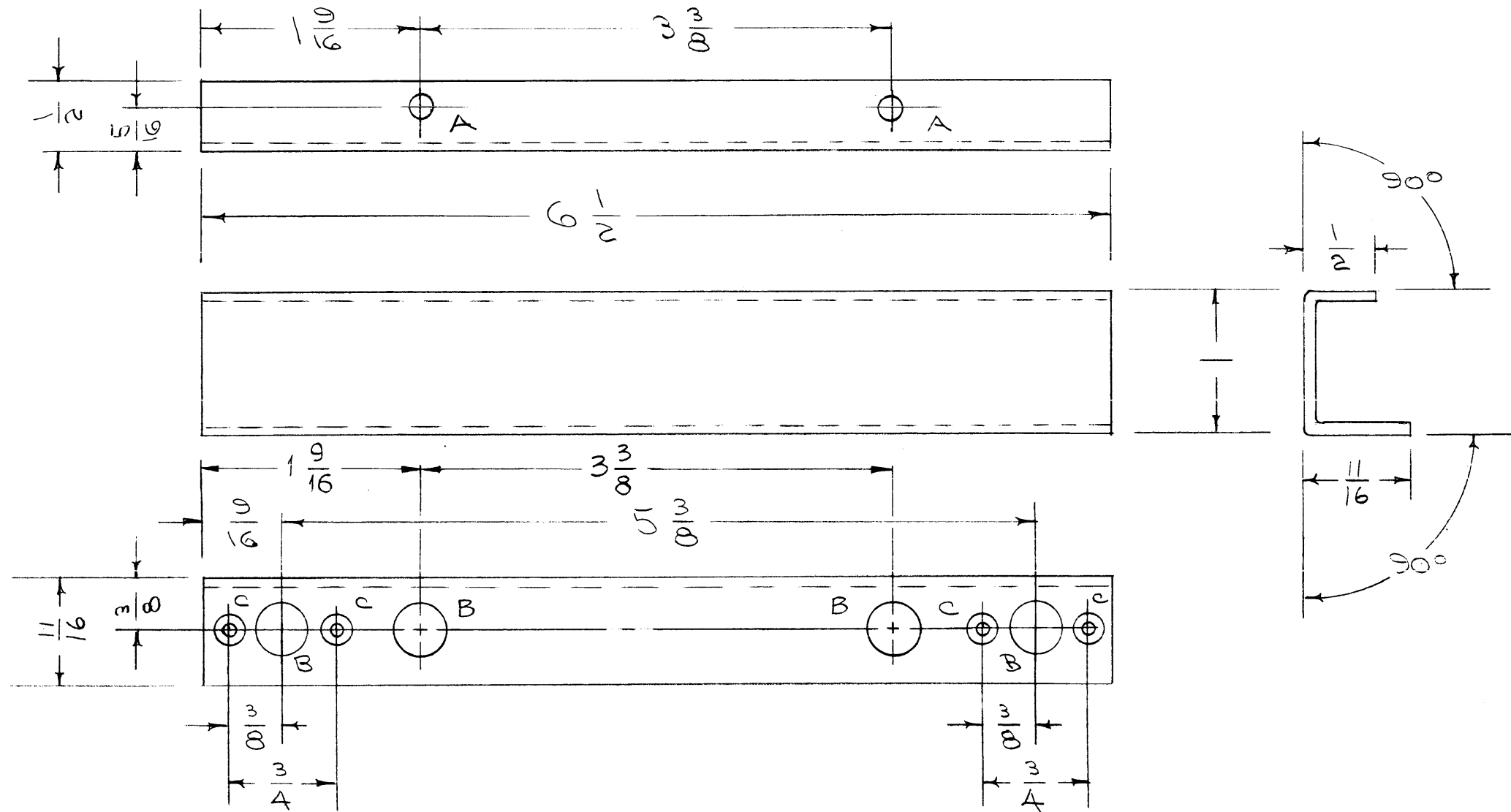


MS-970 C

A - 3/16 (.187) DIA.      2 HOLES REQ.  
 B - 3/8 (.375) DIA.      4 HOLES "  
 C - DRILL & C'SINK      4 " "



NOTICE TO PERSONS RECEIVING THIS DRAWING

THE TECHNICAL MATERIEL CORPORATION claims proprietary right in the material disclosed herein. This drawing is issued in confidence for engineering information only and may not be reproduced or used to manufacture anything shown hereon without permission from THE TECHNICAL MATERIEL CORPORATION to the user. This drawing is loaned for mutual assistance and is subject to recall at any time.

Property of:  
**THE TECHNICAL MATERIEL CORPORATION**  
**MAMARONECK, NEW YORK**

ISSUE	ITEM	CHANGED FROM	DATE	CH. NO.	DRAFTS	CHECKER	ENG. APP.
C	1	② "B" Holes Added	9-6-60	2923	J.C.B.	<i>[Signature]</i>	
B	1	S-404 WAS S-101	12/14/59	1001	A/S	<i>[Signature]</i>	EMN
A	1	"A" HOLES WERE 5/32 X 5/16 SLOTS	9/21/56	1	file	<i>[Signature]</i>	<i>[Signature]</i>

<b>TOLERANCES</b>		<b>SCALE:</b>	
DEC. DIM. ±		MAXIMUM ALLOWABLE TOLERANCES HAVE BEEN DETERMINED AND ANY DEVIATIONS WILL BE CAUSE FOR REJECTION.	
FRAC. DIM. ± 1/64		REMOVE ALL BURRS AND SHARP EDGES	
ANGULAR DIM. ±			

1	RTF-2	MAS/OSC		11-10-58
1	RTF			8-23-56
REQ. PER UNIT	MODEL	PROJECT NO.	ASS'Y. NO.	DATE
				USED ON

REQ. ITEM	PART NO.	DESCRIPTION	SYMBOL
	.064	STOCK SIZE	
	ALUMINUM	MATERIAL	
	5052 H32	TYPE & TEMPER	
		HEAT TREAT. SPEC.	
		FINISH & SPEC. NO.	
		THE TECHNICAL MATERIEL CORP. MAMARONECK, NEW YORK	
		COVER SUPPORT, TOP OVEN RTF	
		DRAWN	CHECKED
		FINAL APPROVAL	
		ELEC. DES. APP.	MECH. DES. APP.