

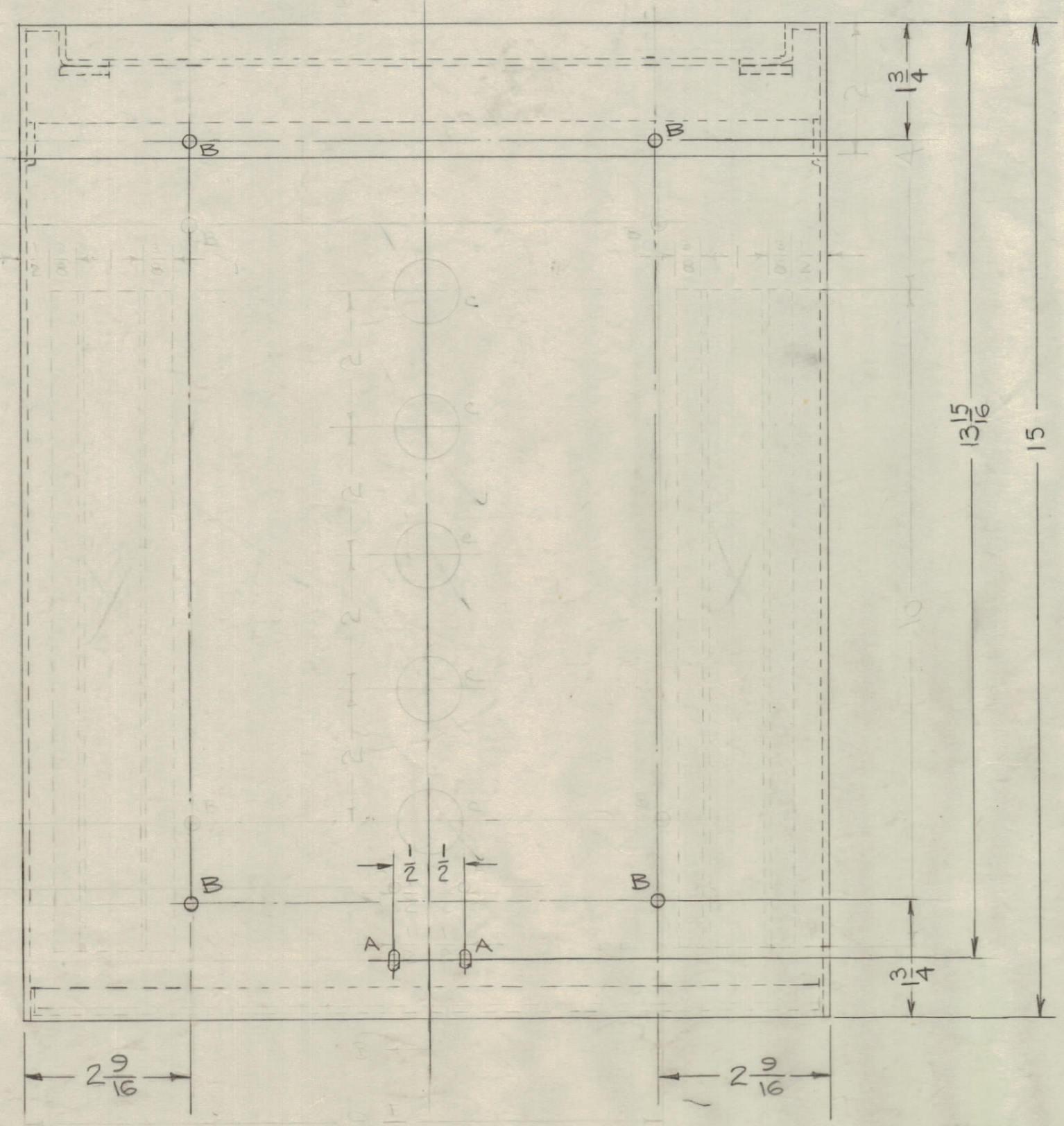
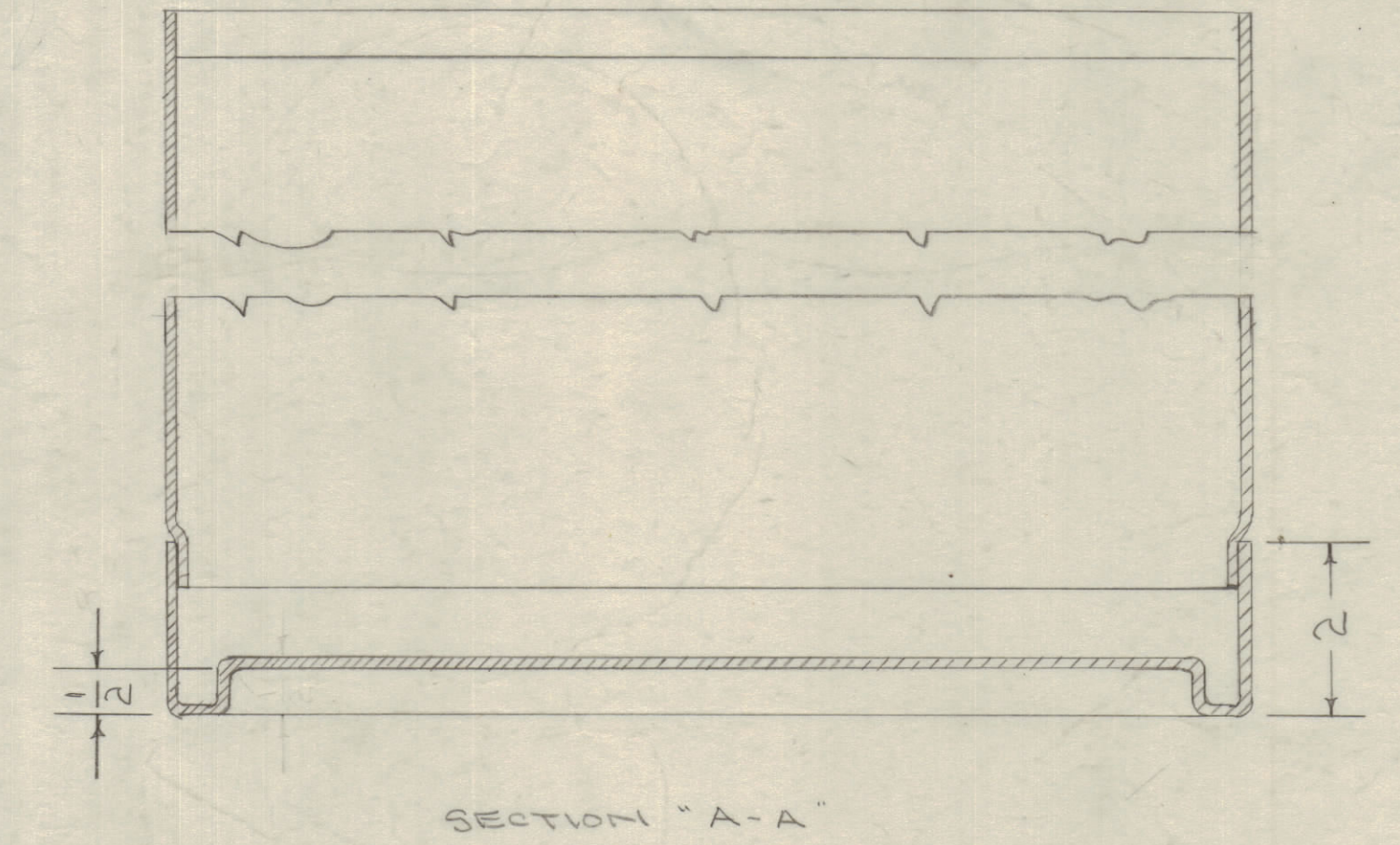
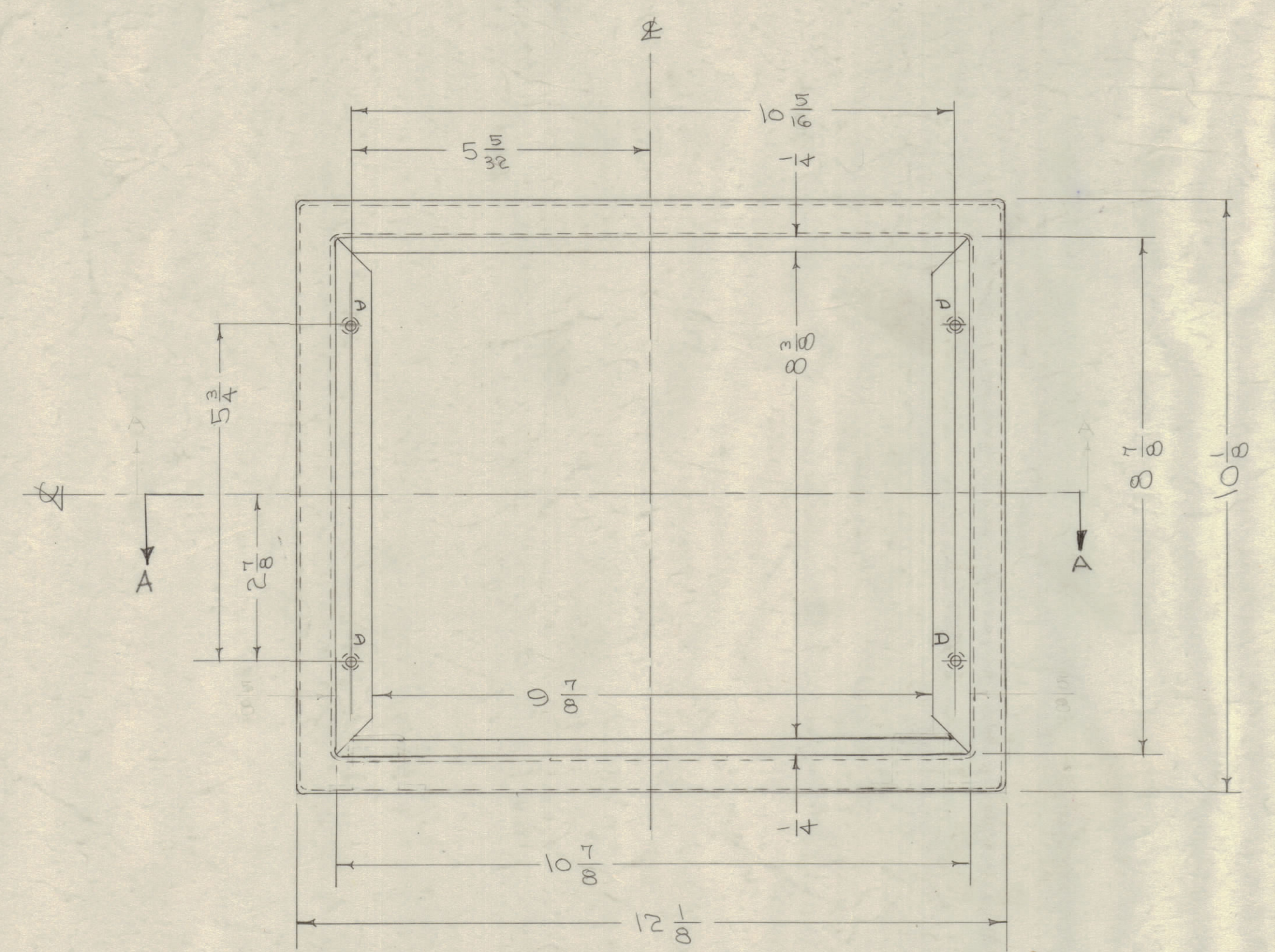
IF IT IS FOUND DESIRABLE TO CHANGE ANY TOLERANCE OR OTHER DETAIL SPECIFIED ON THIS DRAWING NOTIFY THE PURCHASER PROMPTLY.

MAXIMUM ALLOWABLE TOLERANCES HAVE BEEN DETERMINED AND DEVIATIONS WILL BE CAUSE FOR REJECTION. REMOVE ALL BURRS AND SHARP EDGES

NOTICE TO PERSONS RECEIVING THIS DRAWING

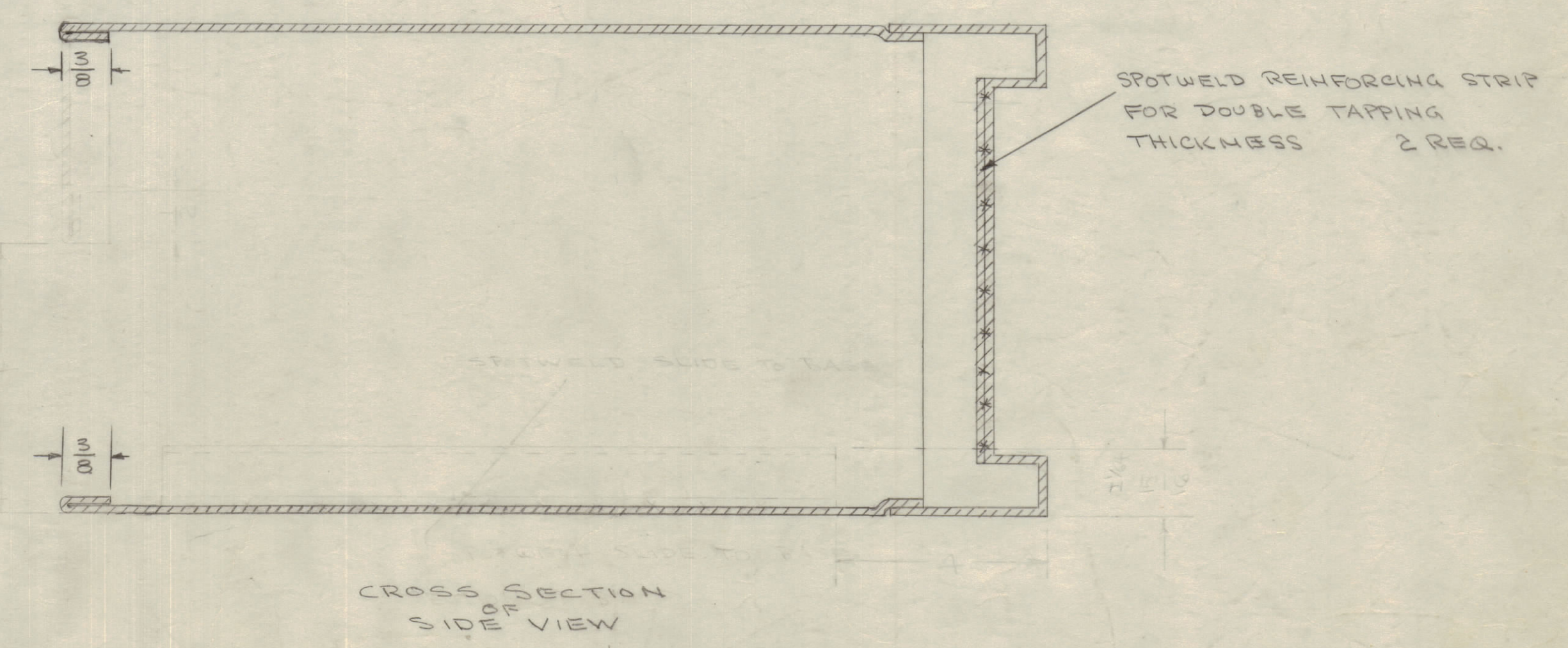
THE TECHNICAL MATERIEL CORPORATION claims proprietary right in the material disclosed hereon. This drawing is issued in confidence for engineering information only and may not be reproduced or used to manufacture anything shown hereon without permission from THE TECHNICAL MATERIEL CORPORATION to the user. This drawing is loaned for mutual assistance and is subject to recall at any time.

Property of:
THE TECHNICAL MATERIEL CORPORATION
MAMARONECK, NEW YORK



LEGEND
A - 1/64 x 1/32 SLOTS
B - 1 3/64 (203) D
C - 1 (100) D
D - DRILL & TAP 10-32

2 SLOTS REQ.
4 HOLES "
" "
4 " "



NOTE - FINISH
ALL SURFACES - S-114 ZINC CHROMATE PRIMER
INSIDE " - S-220 RCAF GRAY SEMI GLOSS ENAMEL
OUTSIDE " - S-254 " " WRINKLE "
OR PRIME & PAINT TO CUSTOMERS SPECIFICATION.

D	1	4(D) HOLES, DRILL & TAP WERE B-32	5-25-62	6698	VRR.	Jude	WJC
C	3	3/8 LIPS WERE 1/2					
	2	A SLOT WAS 1/64 D HOLE	1/4/58	3	16	Jude	WJC
	1	1 3/16 WAS 1 4/16					
B	3	TRACK & C HOLES DELE.					WJC
	2	REAR VIEW, PERFORATION DELE.	1/24/57	2	16	Jude	WJC
	1	EDGES NOTED & TO CORRECT					
A	2	1 1/2 WAS B (TO V HOLE)	10/14/56	1	16	Jude	WJC
	1	DIM. ADDED TO REAR VIEW					

BOTTOM VIEW SHOWN

1	GPS-2			1-24-57
1	GSB-1	459		5-24-56
REQ PER UNIT	MODEL	PROJECT NO.	ASS'Y. NO.	DATE
				USED ON

REQ. ITEM	PART NO.	DESCRIPTION	SYMBOL
	.062	THE TECHNICAL MATERIEL CORP. MAMARONECK, NEW YORK	
	MILD STEEL	CABINET	
	MATERIAL	WEIGHT PER FC.	
	TYPE & TEMPER	###	2 B
	HEAT TREAT. SPEC.		
	FINISH & SPEC. NO.		