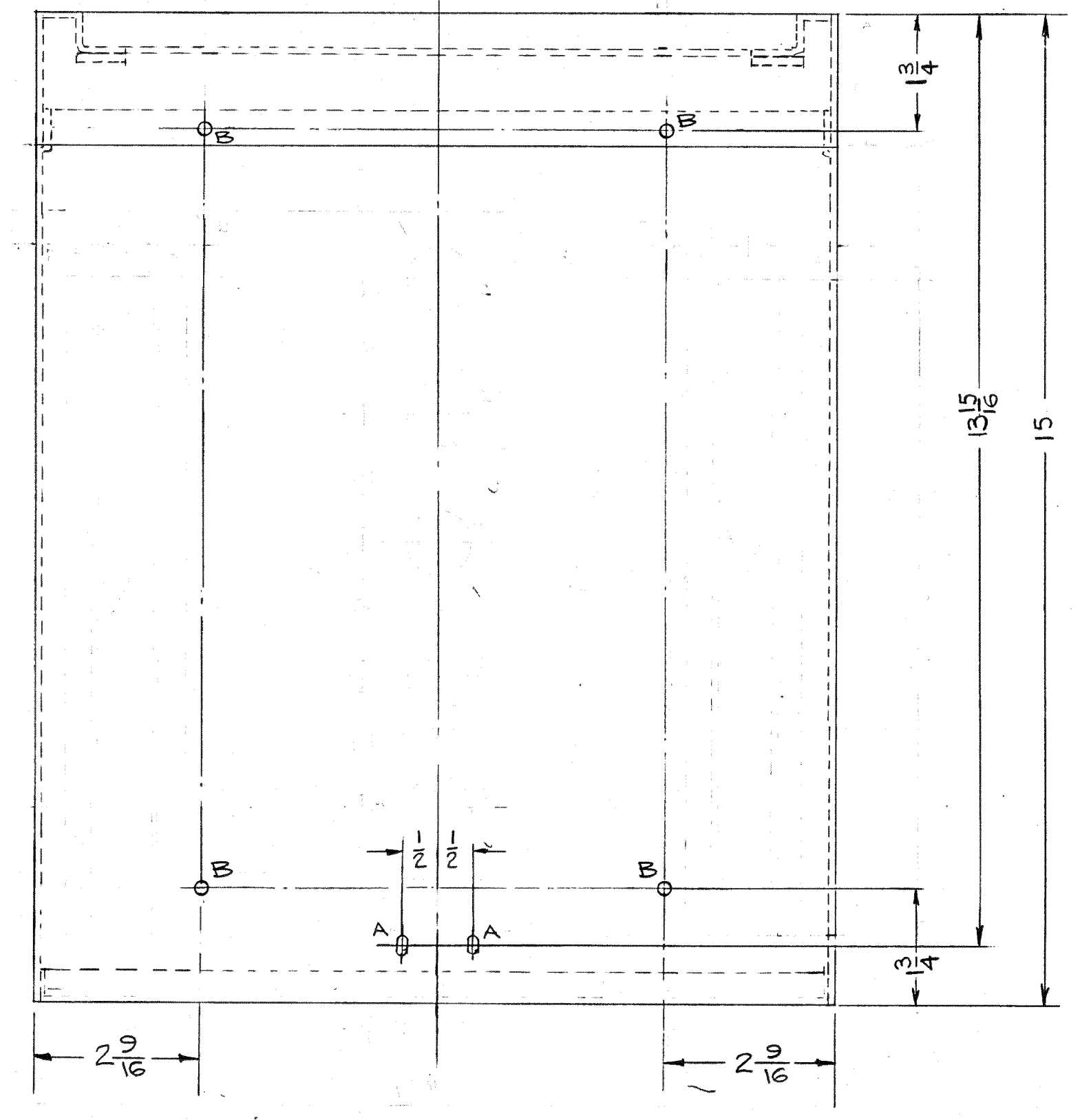
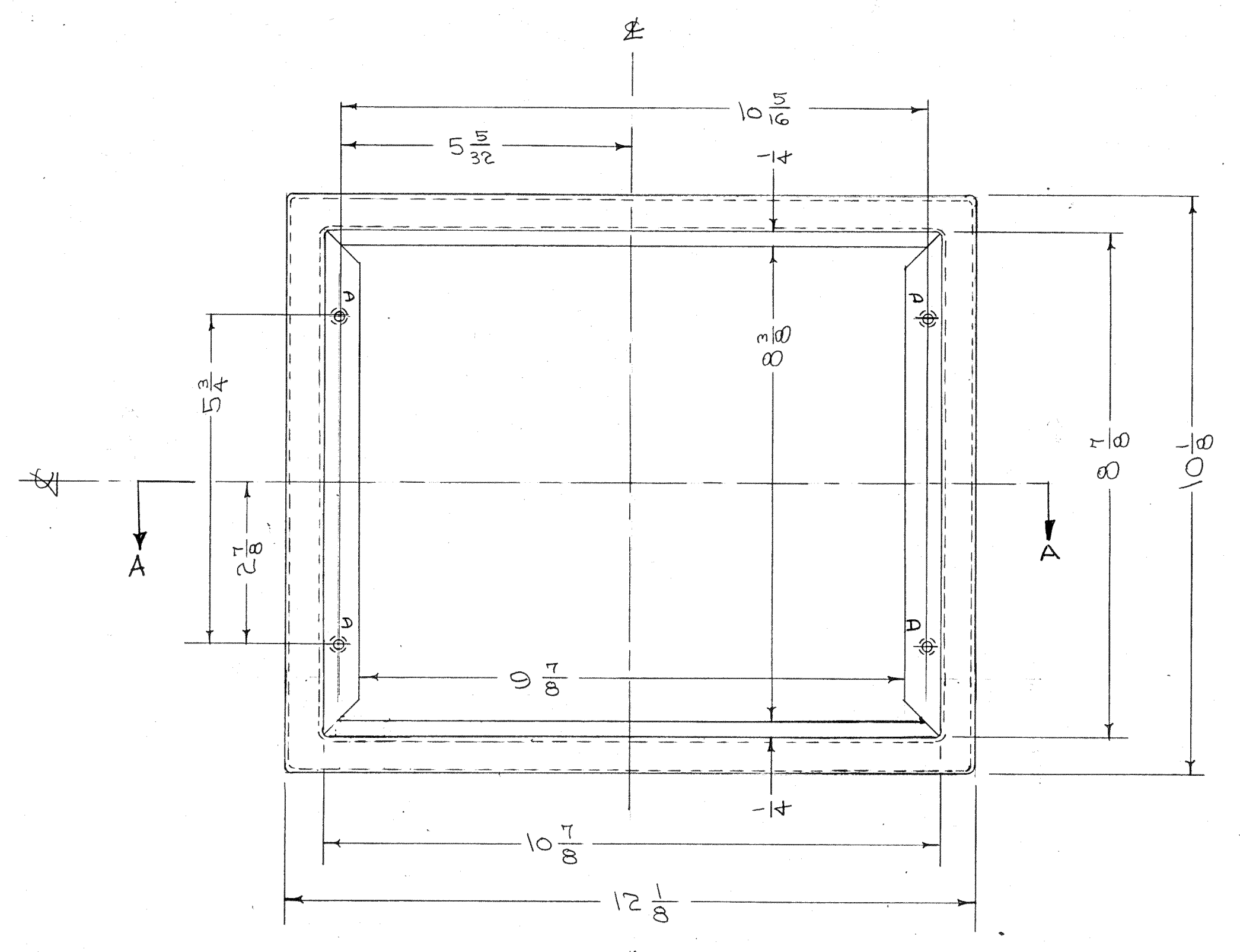


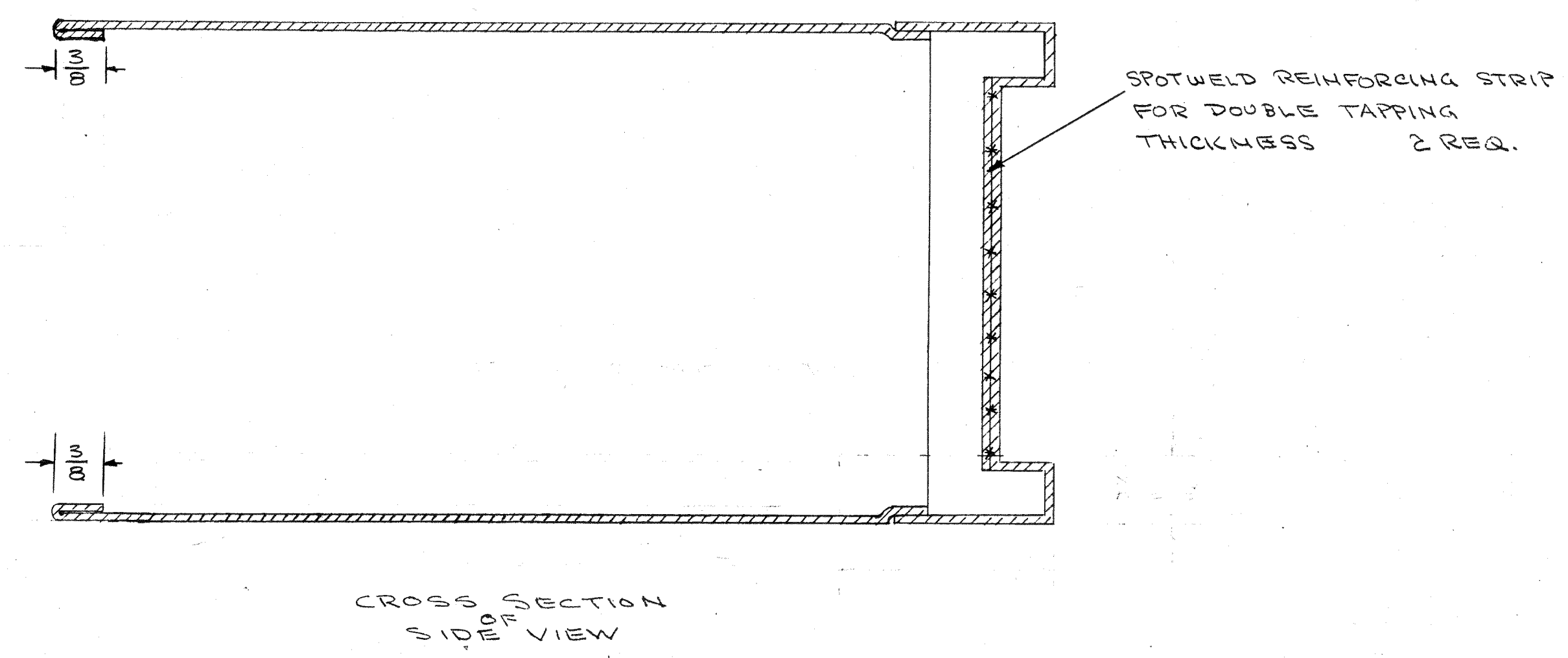
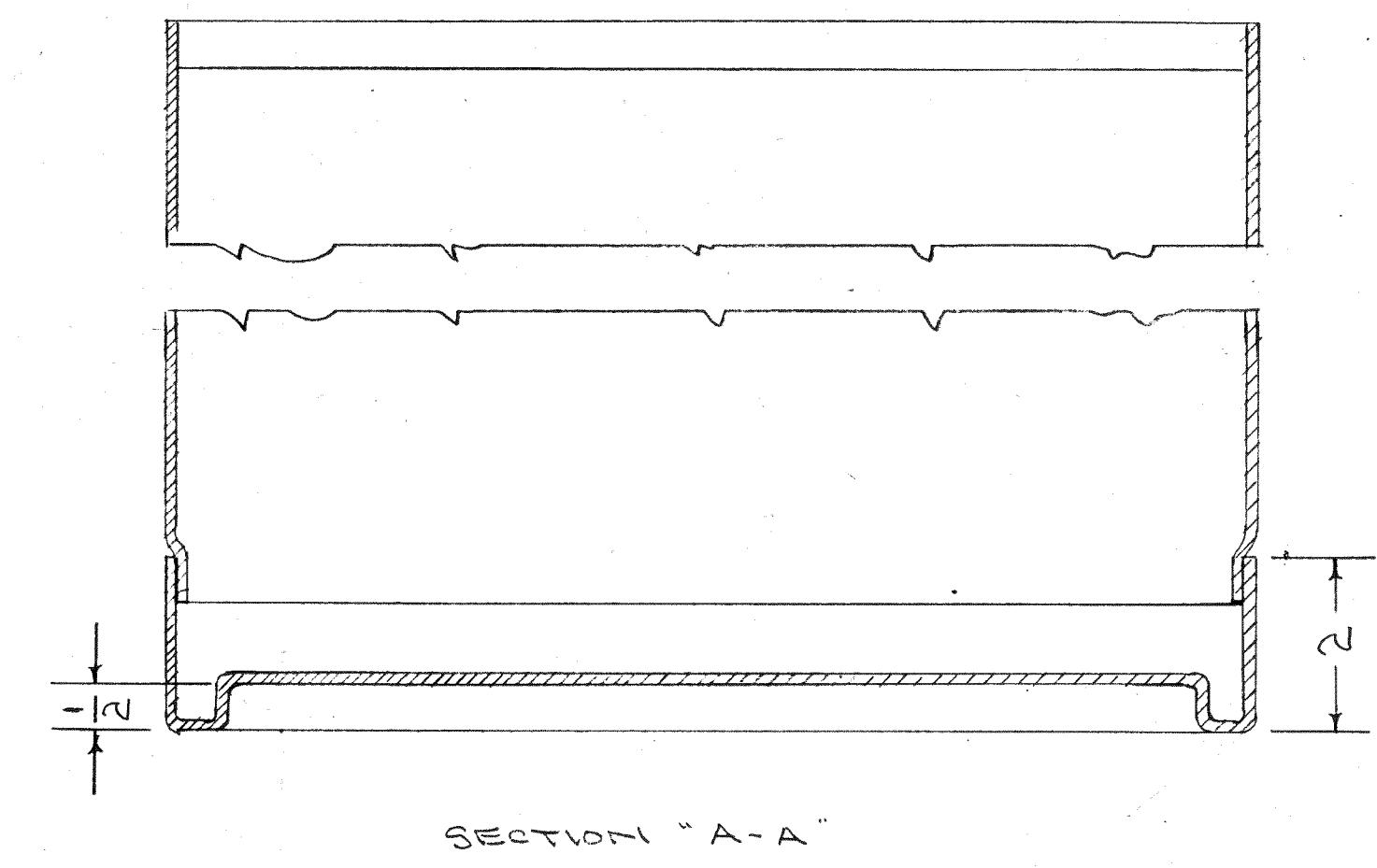
IF IT IS FOUND DESIRABLE TO CHANGE ANY TOLERANCE OR OTHER DETAIL SPECIFIED ON THIS DRAWING NOTIFY THE PURCHASER PROMPTLY.
MAXIMUM ALLOWABLE TOLERANCES HAVE BEEN DETERMINED AND DEVIATIONS WILL BE CAUSE FOR REJECTION. REMOVE ALL BURRS AND SHARP EDGES

NOTICE TO PERSONS RECEIVING THIS DRAWING
THE TECHNICAL MATERIEL CORPORATION claims proprietary right in the material disclosed herein. This drawing is loaned in confidence for engineering information only and may not be reproduced or used to manufacture anything shown herein without permission from THE TECHNICAL MATERIEL CORPORATION to the effect that this drawing is loaned for mutual assistance and is subject to recall at any time.
Property of:
THE TECHNICAL MATERIEL CORPORATION
MAMARONECK, NEW YORK



BOTTOM VIEW SHOWN

LEGEND
A - 1/64 x 1/32 SLOTS
2 SLOTS REQ.
B - 13/64 (.203) D
4 HOLES "
D - DRILL & TAP 10-32
4 " "



NOTE - FINISH
ALL SURFACES - S-114 ZINC CHROMATE PRIMER
INSIDE " - S-220 RCAF GRAY SEMI GLOSS ENAMEL
OUTSIDE " - S-254 " " WRINKLE "
OR PRIME & PAINT TO CUSTOMERS SPECIFICATION.

ISSUE	ITEM	CHANGED FROM	DATE	CH. NO.	DRAFTS	CHECKER	ENG. APP.
D	1	4(D) HOLES, DRILL & TAP WERE 8-32	5/25/57	6696	V.R.R.		
C	3	3/8 LIPS WERE 1/2					
	2	A SLOT WAS 11/64 D. HOLE	4/14/58	3	K6		
	1	B SLOT WAS 14 3/16					
B	3	TRACK & C HOLES DELE.					
	2	REAR VIEW / PERFORATION DELE.	1/24/57	2	K6		
A	1	HOLES MOVED TO 10-32	10/14/56	1	HAR		
	2	12 WAS 8 (TOP HOLE)					
	1	DIM. ADDED TO REAR VIEW					

TOLERANCES			SCALE:
ALL OTHERS	DEC. DIM. ± 1/4	FRAC. DIM. ± 1/4	ANGULAR DIM. ±
		DRILL PUNCH, COMMERCIAL STOCK SIZES AND MANUFACTURERS TOLERANCES ARE NOT INCLUDED.	

REQ. ITEM	PART NO.	DESCRIPTION	SYMBOL
1	GPS-2		1-24-57
1	G5B-1		5-24-56

REQ. PER UNIT	MODEL	PROJECT NO.	APPY. NO.	DATE	FINISH & SPEC. NO.
	GPS-2	459		5-24-56	

THE TECHNICAL MATERIEL CORP. MAMARONECK, NEW YORK	
STOCK SIZE	.062
MATERIAL	MILD STEEL
WEIGHT PER FC.	
TYPE & TEMPER	S20-S/A/56
HEAT TREAT. SPEC.	
SEE NOTE	

DESCRIPTION			SYMBOL
THE TECHNICAL MATERIEL CORP. MAMARONECK, NEW YORK			
CABINET			
DRWN	HAR		
ELEC. DES. APP.			
MECH. DES. APP.			
FINAL APPROVAL			
MS-949 D			

MS-949 D

A2

A2

MS-949-D

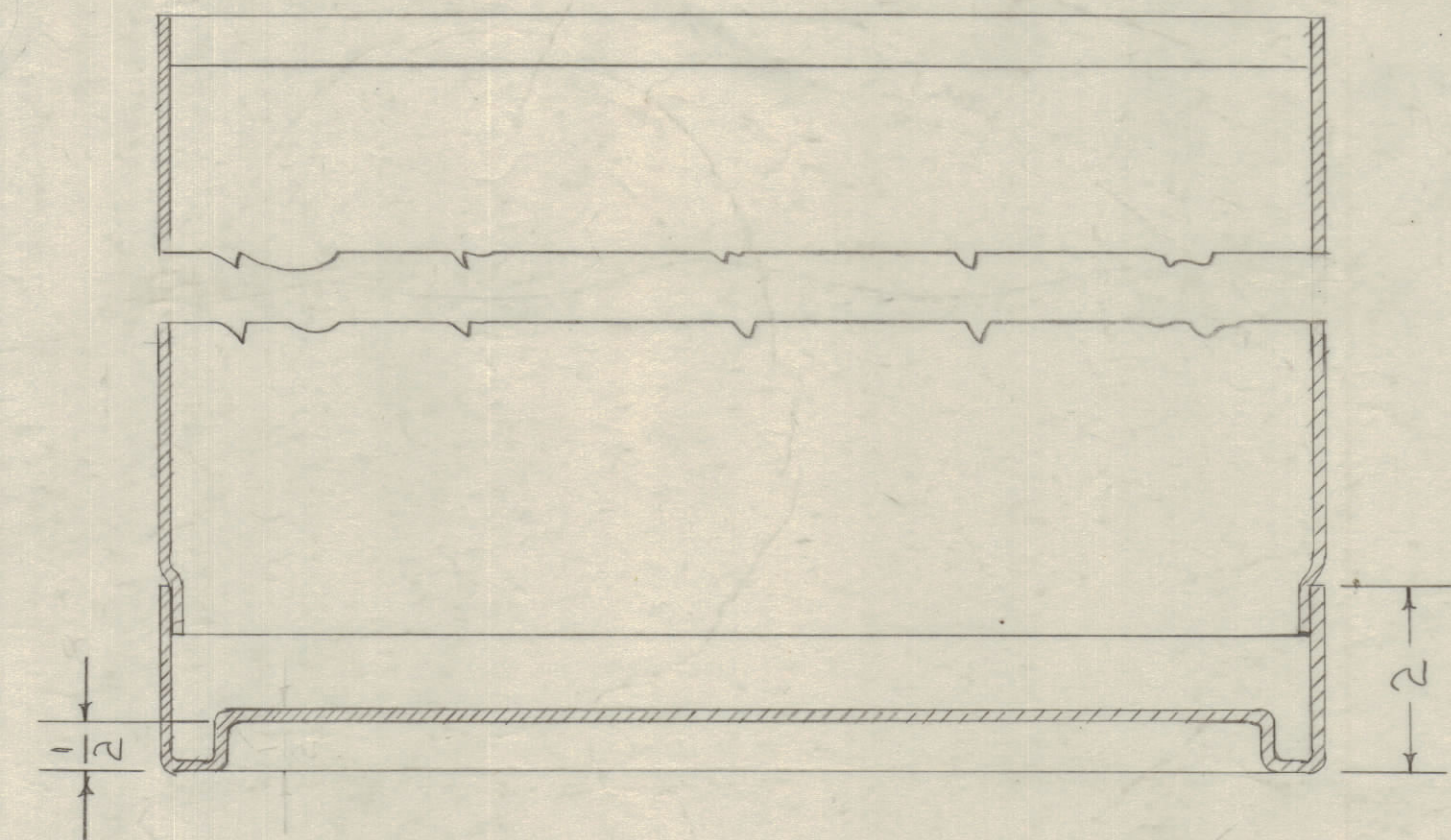
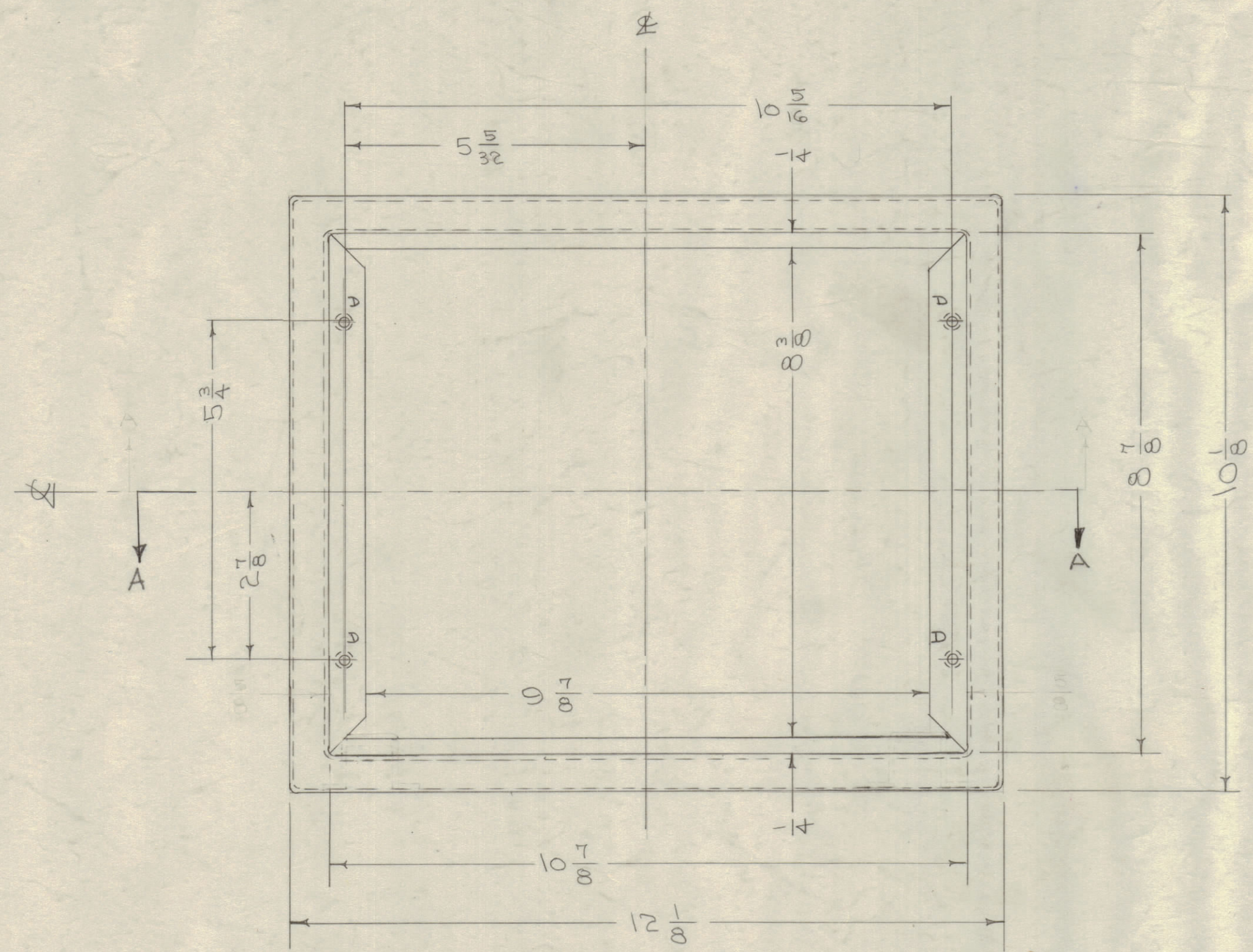
IF IT IS FOUND DESIRABLE TO CHANGE ANY TOLERANCE OR OTHER DETAIL SPECIFIED ON THIS DRAWING NOTIFY THE PURCHASER PROMPTLY.

MAXIMUM ALLOWABLE TOLERANCES HAVE BEEN DETERMINED AND DEVIATIONS WILL BE CAUSE FOR REJECTION. REMOVE ALL BURRS AND SHARP EDGES

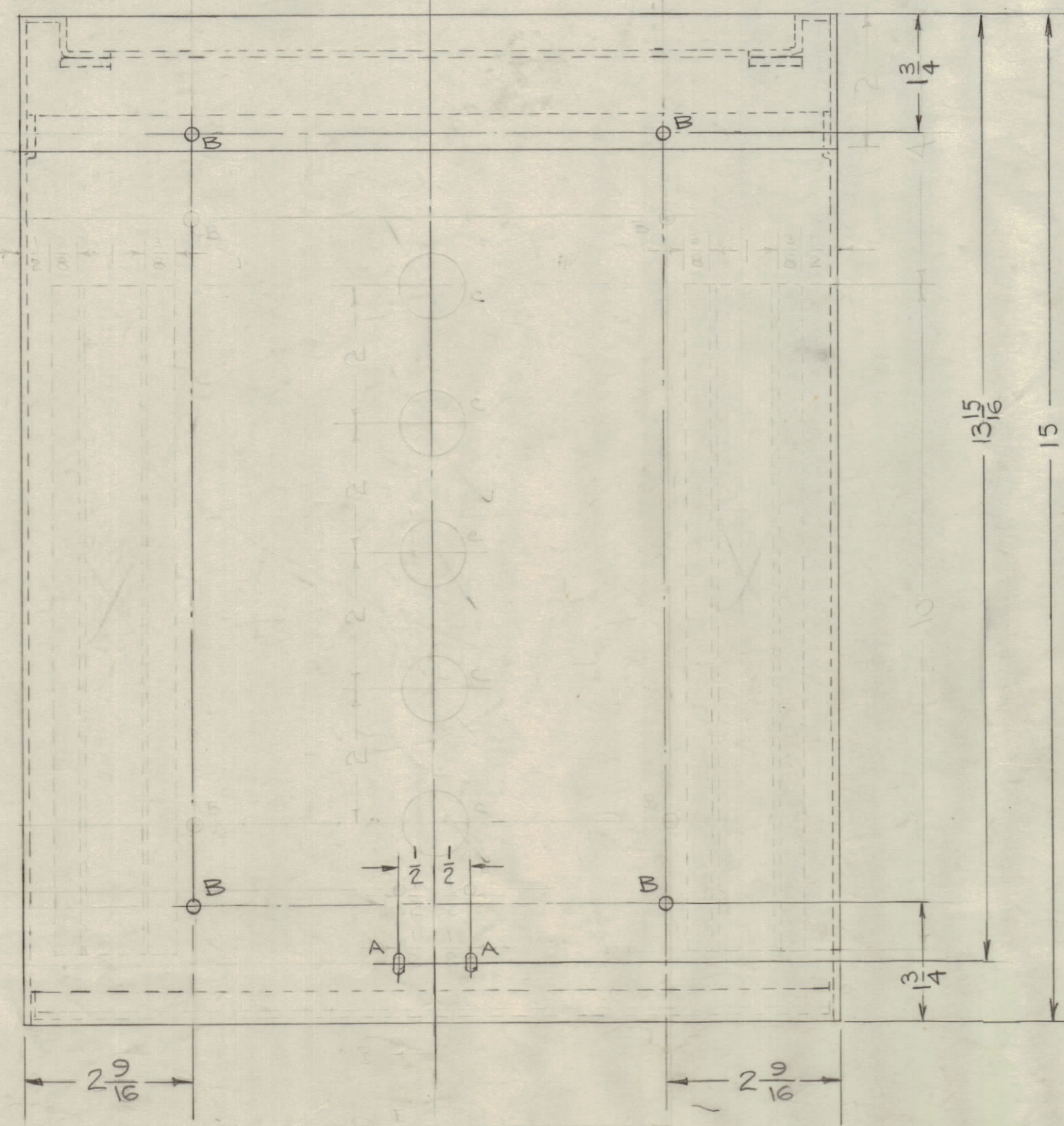
NOTICE TO PERSONS RECEIVING THIS DRAWING

THE TECHNICAL MATERIEL CORPORATION claims proprietary right in the material disclosed hereon. This drawing is issued in confidence for engineering information only and may not be reproduced or used to manufacture anything shown hereon without permission from THE TECHNICAL MATERIEL CORPORATION to the user. This drawing is loaned for mutual assistance and is subject to recall at any time.

Property of:
THE TECHNICAL MATERIEL CORPORATION
MAMARONECK, NEW YORK



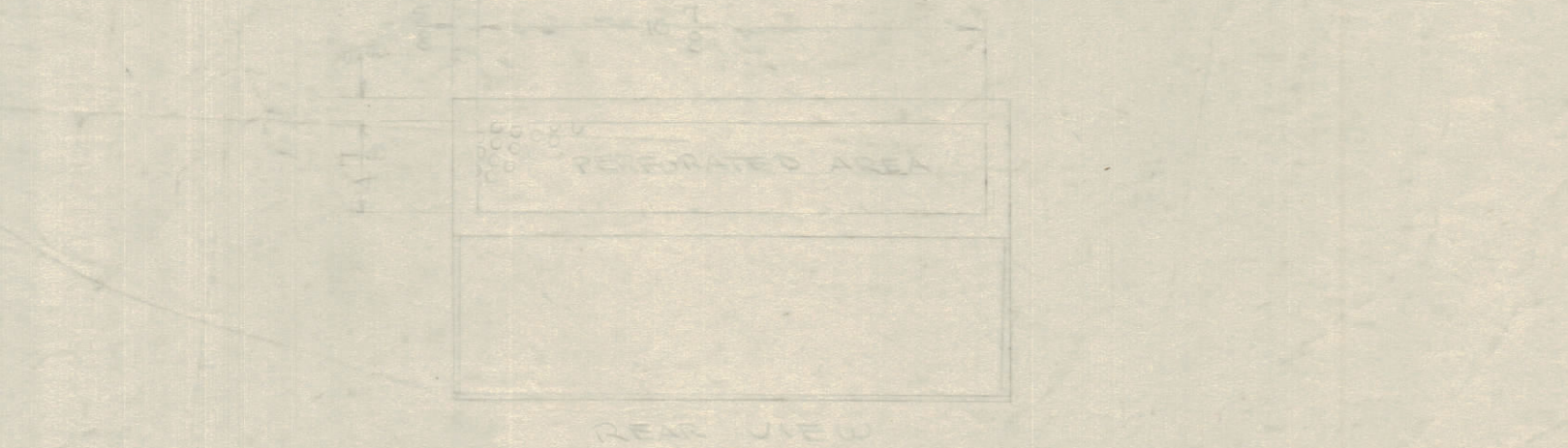
SECTION "A-A"



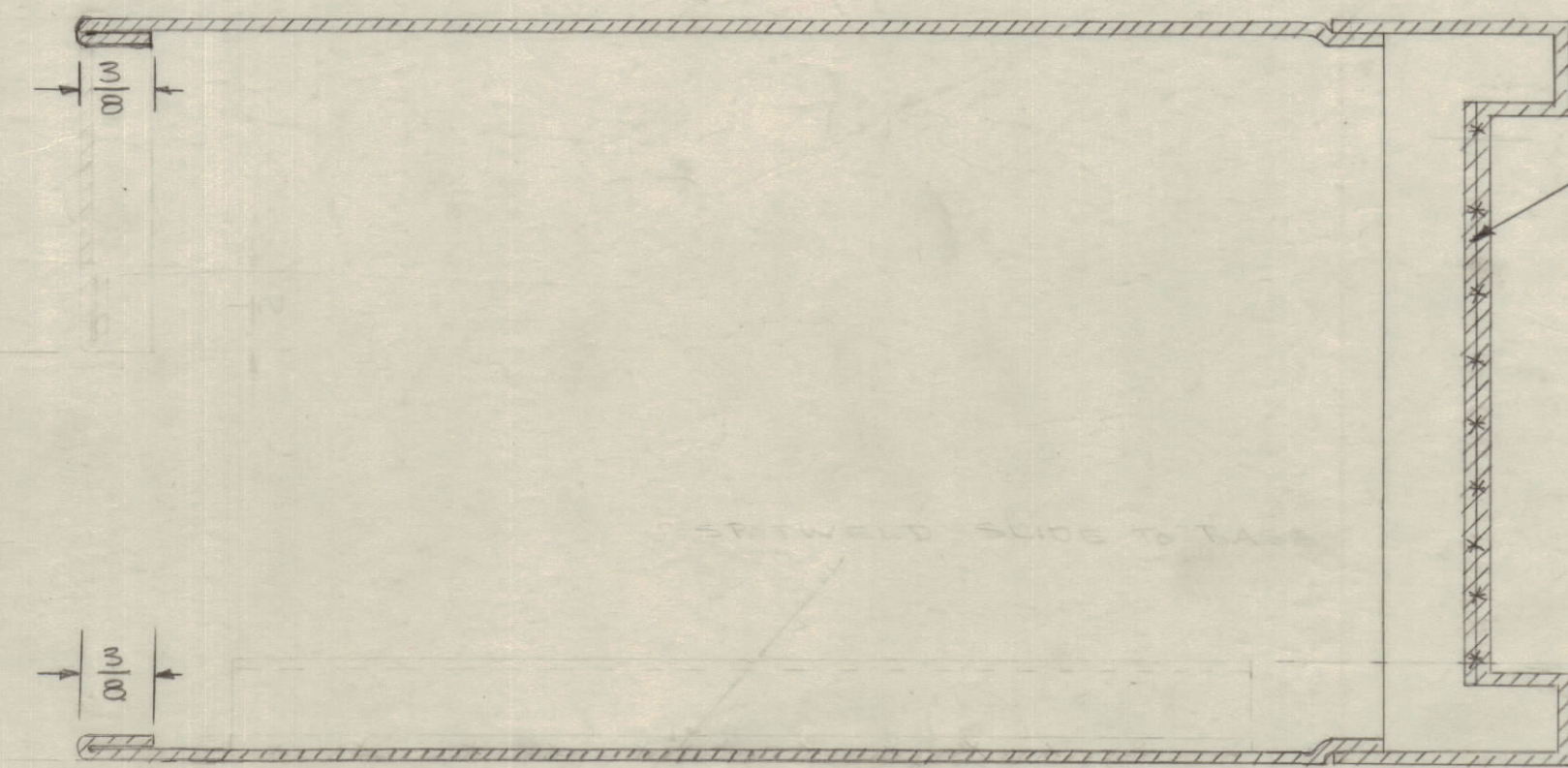
BOTTOM VIEW SHOWN

LEGEND
A - 1/64 x 1/32 SLOTS
B - 1 3/64 (203) D
C - 1 (10-32)
D - DRILL & TAP 10-32

2 SLOTS REQ.
4 HOLES "
" "
4 " "



REAR VIEW



CROSS SECTION SIDE VIEW

SPOTWELD REINFORCING STRIP FOR DOUBLE TAPPING THICKNESS 2 REQ.

NOTE - FINISH
ALL SURFACES - S-114 ZINC CHROMATE PRIMER
INSIDE " - S-220 RCAF GRAY SEMI GLOSS ENAMEL
OUTSIDE " - S-254 " " WRINKLE "
OR PRIME & PAINT TO CUSTOMERS SPECIFICATION.

D	1	4(D) HOLES, DRILL & TAP WERE B-32	5-25-62	6698	VRR.	Jude	WJC
C	3	3/8 LIPS WERE 1/2					
	2	A SLOT WAS 1/64 D HOLE	1/4/58	3	16	Jude	WJC
	1	1 3/16 WAS 1 4/16					
B	3	TRACK & C HOLES DELE					WJC
	2	REAR VIEW, PERFORATION DELE	1/24/57	2	16	Jude	WJC
	1	EDGES NOTED & TO CORRECT					
A	2	1 1/2 WAS B (TO V HOLE)	10/14/56	1	16	Jude	WJC
	1	Dim. Added To Rear View					

ISSUE	ITEM	CHANGED FROM	DATE	CN. NO.	DRAFTS	CHECKER	ENG. APP.
TOLERANCES FROM							
SCALE:							
ALL DEC. DIM. ± 1/16 OTHERS FRACTIONAL DIM. ± 1/32 ANGULAR DIM. ± 1/16			DRILL, PUNCH, COMMERCIAL STOCK SIZES AND MANUFACTURERS TOLERANCES ARE NOT INCLUDED.				

1	GPS-2			1-24-57
1	GSB-1	459		5-24-56
REQ PER UNIT	MODEL	PROJECT NO.	ASS'Y. NO.	DATE
USED ON				

REQ. ITEM	PART NO.	DESCRIPTION	SYMBOL
	.062	THE TECHNICAL MATERIEL CORP. MAMARONECK, NEW YORK	
	MILD STEEL	CABINET	
	MATERIAL	WEIGHT PER FC.	
	TYPE & TEMPER	###	2 B
	HEAT TREAT. SPEC.	###	
	FINISH & SPEC. NO.		

MS-949 D