

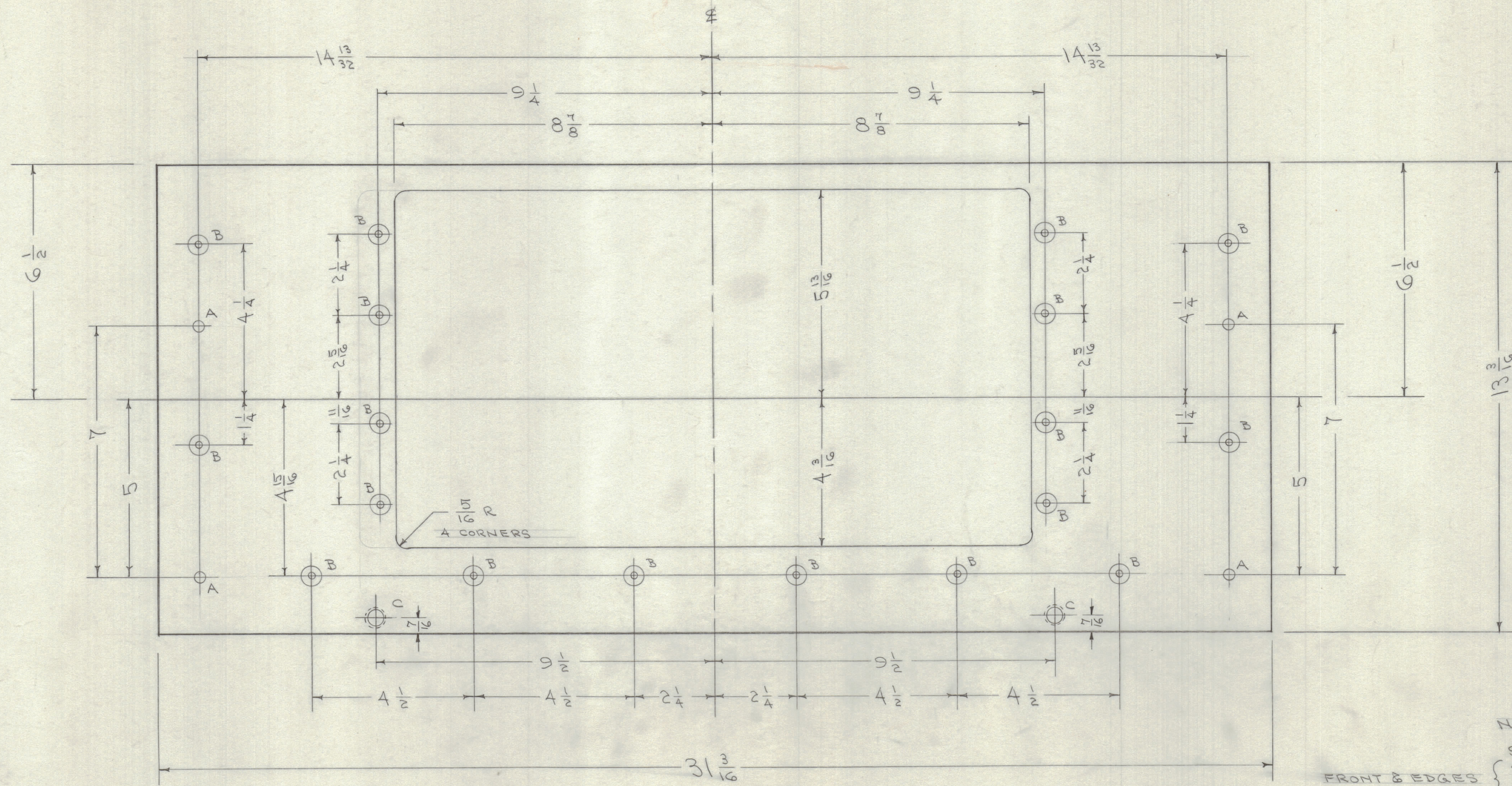
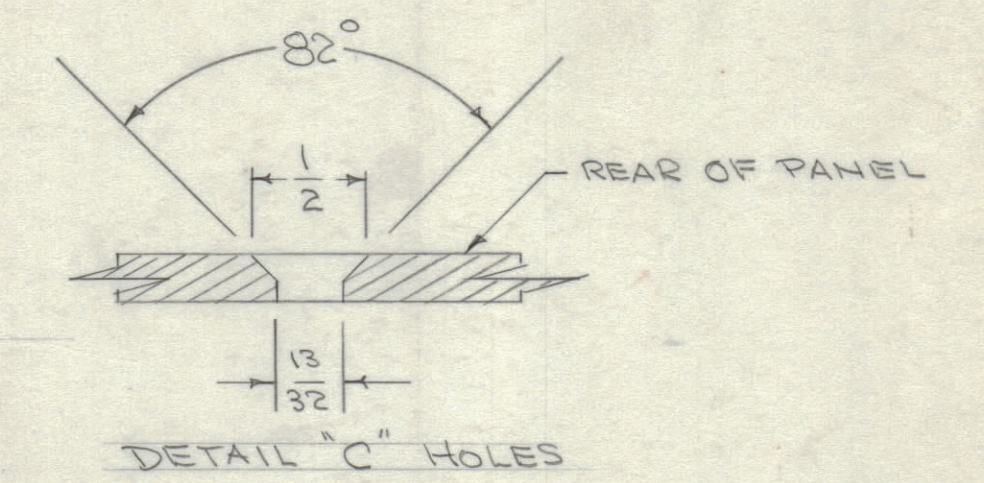
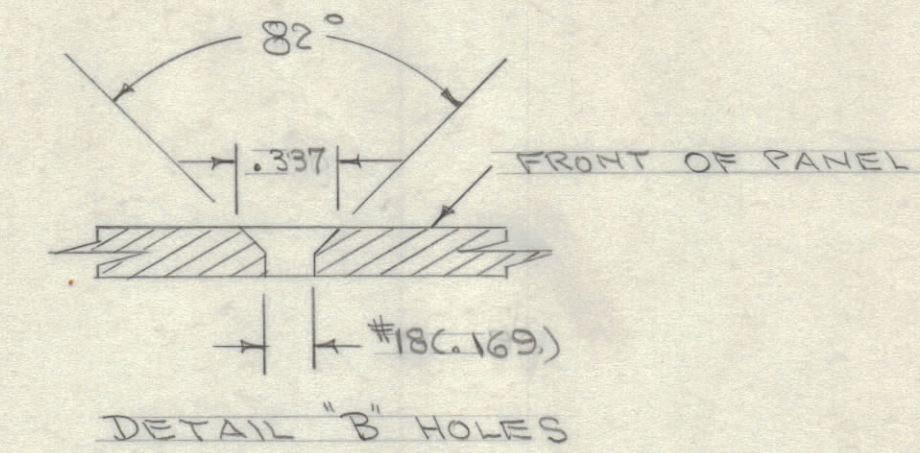
DESIRABLE TO CHANGE ANY TOLERANCE  
DETAIL SPECIFIED ON THIS DRAWING NOTIFY  
DRAWER PROMPTLY.  
MINIMUM ALLOWABLE TOLERANCES HAVE BEEN DETERMINED  
AND DEVIATIONS WILL BE CAUSE FOR REJECTION.  
REMOVE ALL BURRS AND SHARP EDGES

**NOTICE TO PERSONS RECEIVING THIS DRAWING**

THE TECHNICAL MATERIEL CORPORATION claims  
proprietary right in the material disclosed herein.  
This drawing is issued in confidence for engineering  
information only and may not be reproduced or used  
to manufacture any part shown hereon without per-  
mission from THE TECHNICAL MATERIEL CORPORA-  
TION to the user. This drawing is loaned for mutual  
assistance and is subject to recall at any time.

Property of:  
THE TECHNICAL MATERIEL CORPORATION  
MAMARONECK, NEW YORK

A - 15/64 (.234) DIA. 4 HOLES REQ.  
B - SEE DETAIL "B" 18 " " "  
C - SEE DETAIL "C" 2 " " "



FRONT OF PANEL SHOWN

NOTE: FINISH  
FRONT & EDGES { S-404 VEL. IRIDITE  
S-114 ZINC CHROMATE PRIMER  
S-115 SMOOTH GRAY ENAMEL

MS-923  
A

ISSUE	ITEM	CHANGED FROM	DATE	CN. NO.	DRAFTS	CHECKER	ENG. APP.
A	1	S-404 VEL. IRIDITE WAS 1/4 S-101 CAUSTIC DIP	4/29/59	1001	EMN		
TOLERANCES							
ALL DEC. DIM. ±		DRILL, PUNCH, COMMERCIAL STOCK					
OTHERS FRAC. DIM. ± 1/64		SIZES AND MANUFACTURERS					
		TOLERANCES ARE NOT INCLUDED.					

REQ. PER UNIT	MODEL	PROJECT NO.	ASSY. NO.	DATE
1	A959	E-500-P		4-23-56
USED ON				

REQ. ITEM	PART NO.	DESCRIPTION	SYMBOL
	3/16 THK.	THE TECHNICAL MATERIEL CORP. MAMARONECK, NEW YORK	
	ALUMINUM	FRONT PANEL	
	MATERIAL	WEIGHT PER PC.	
	2024 T3	XFK, ADAPTOR A959	
	TYPE & TEMPER	CDP 4-23-56	
	HEAT TREAT. SPEC.	DRAWN	ELEC. DES. APP.
	SEE NOTE	CHECKED	MECH. DES. APP.
			FINAL APPROVAL
			MS-923 A
			FINISH & SPEC. NO.