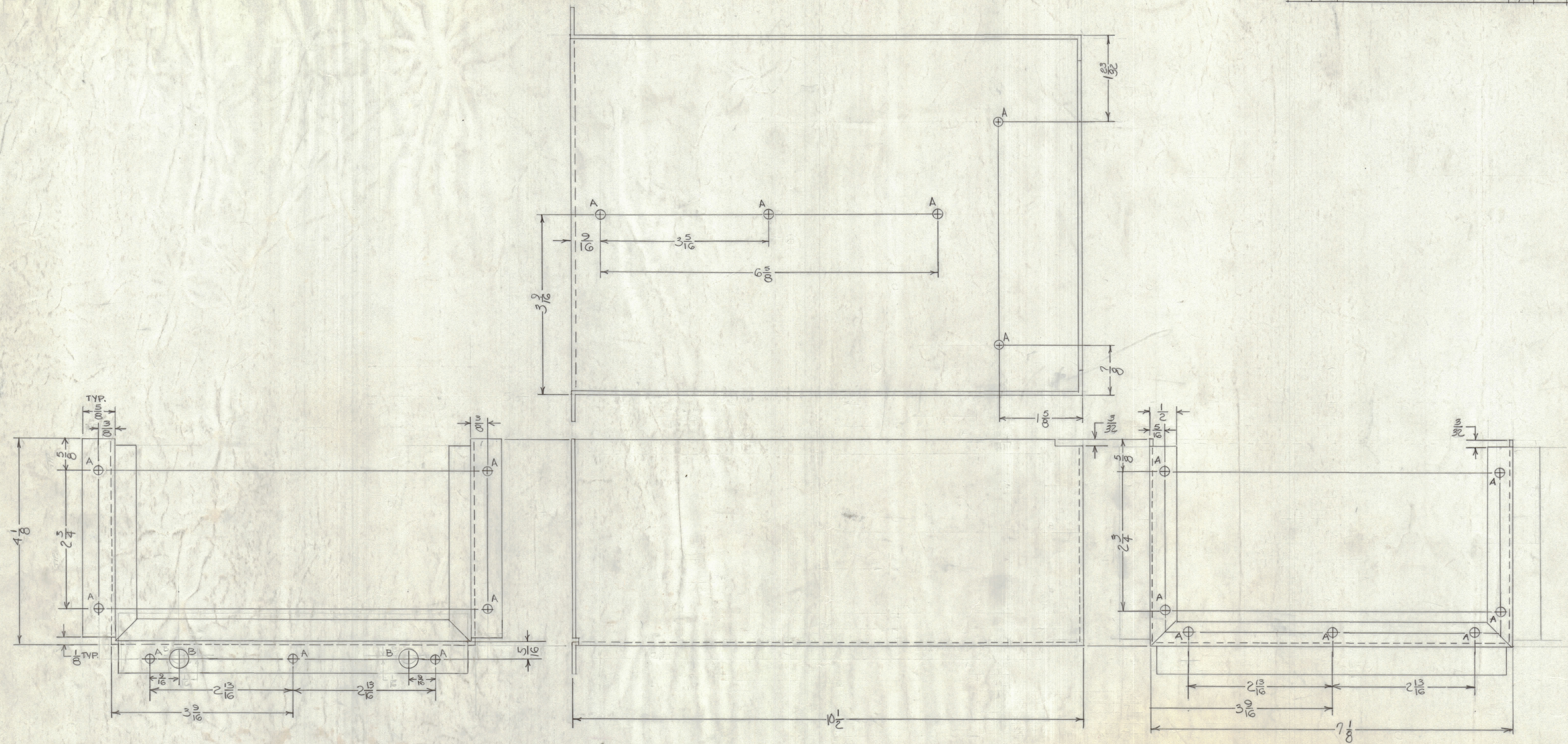


REVISIONS						
ZONE	LTR	DESCRIPTION	DATE	E.M.N.NO	DRAFT	CHKD
	φ	ORIGINAL RELEASE FOR PRODUCTION	11/16/68			



M/E	DESCRIPTION	REQ.
A	11/64 DIA.	17
B	3/8 DIA.	2
C	13/64 DIA.	2

QTY / UNIT	MODEL USED ON	ASS'Y NO.
	SPT 3KVHF	AP141
APPLICATION		
	CODE	

UNLESS OTHERWISE SPECIFIED DIMENSIONS ARE IN INCHES AND INCLUDE CHEMICALLY APPLIED OR PLATED FINISHES

TOLERANCES ON

DECIMALS	FRACTIONS
.X ± .05	± 1/64
.XX ± .01	ANGLES
.XXX ± .005	± 0° - 30'

MATERIAL 5052H 32 .064 ALUM.

FINISH S404-YEL. IRIDITE

QTY. REQ.	ITEM	PART NO.	DESCRIPTION	SYMBOL
LIST OF MATERIAL				
FINAL APPROVAL: F. BUDETTI				
MECH. DES. DATE: 8-1-69				
ELECT. DES. DATE:				
CHECKED DATE:				
DRAWN: A. PETROCCA DATE: 11/14/68				
THE TECHNICAL MATERIEL CORP. MAMARONECK, NEW YORK				
MAIN CHASSIS - 12V.P.S.-MOD.				
SIZE	CODE IDENT. NO.	DWG NO.	ISSUE	
D	82679	MS8461	φ	
SCALE				SHEET 1 OF 1

NOTICE TO PERSONS RECEIVING THIS DRAWING

THE TECHNICAL MATERIEL CORPORATION claims proprietary right in the material disclosed hereon. This drawing is issued in confidence for engineering information only and may not be reproduced or used to manufacture anything shown hereon without permission from THE TECHNICAL MATERIEL CORPORATION to the user. This drawing is loaned for mutual assistance and is subject to recall at any time.