

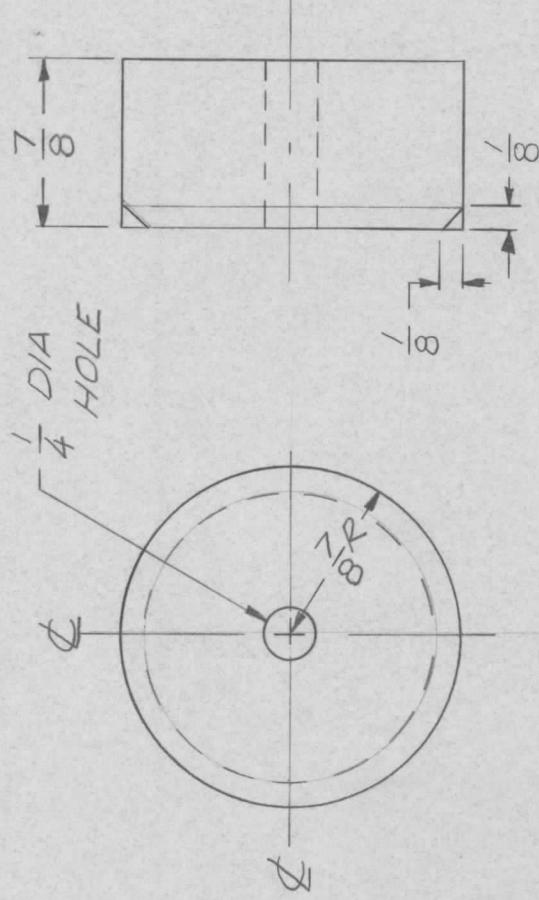
APPLICATION

QTY MODEL USED ON ASS'Y NO. LTR

4 PYLON UNIT 4 X1 Ø

REVISIONS

DESCRIPTION	DATE	E.M.N.NO	DRAFT	CHKD	APPD
ADD. DIM. 1/8 ORIGINAL RELEASE FOR PRODUCTION	5-19-68	-H-	GE		
	5-19-69	-H-	GE		



UNLESS OTHERWISE SPECIFIED DIMENSIONS ARE IN INCHES AND INCLUDE CHEMICALLY APPLIED OR PLATED FINISHES

DECIMALS .X ± .05 .XX ± .01 .XXX ± .005
FRACTIONS 1/64
TOLS. ANGLES 0°-30'

MATERIAL 2024-T3 ALUM

FINISH S404 YEL IRIDITE

REQ'D ITEM	PART NUMBER	DESCRIPTION	SYMBOL
FINAL APPROVAL	DATE 5/24/69	LIST OF MATERIAL	
MECH. DES.	DATE	THE TECHNICAL MATERIEL CORP. MAMARONECK, NEW YORK	
ELECT. DES.	DATE	PYLON PLUG	
CHECKED	DATE 5/16/69		
DRAWN	DATE 1/4-68		

NOTICE TO PERSONS RECEIVING THIS DRAWING

THE TECHNICAL MATERIEL CORPORATION claims proprietary right in the material disclosed hereon. This drawing is issued in confidence for engineering information only and may not be reproduced or used to manufacture anything shown hereon without permission from THE TECHNICAL MATERIEL CORPORATION to the user. This drawing is loaned for mutual assistance and is subject to recall at any time.

SIZE A CODE IDENT. NO. 82679 DWG NO. MS 8432

ISSUE Ø