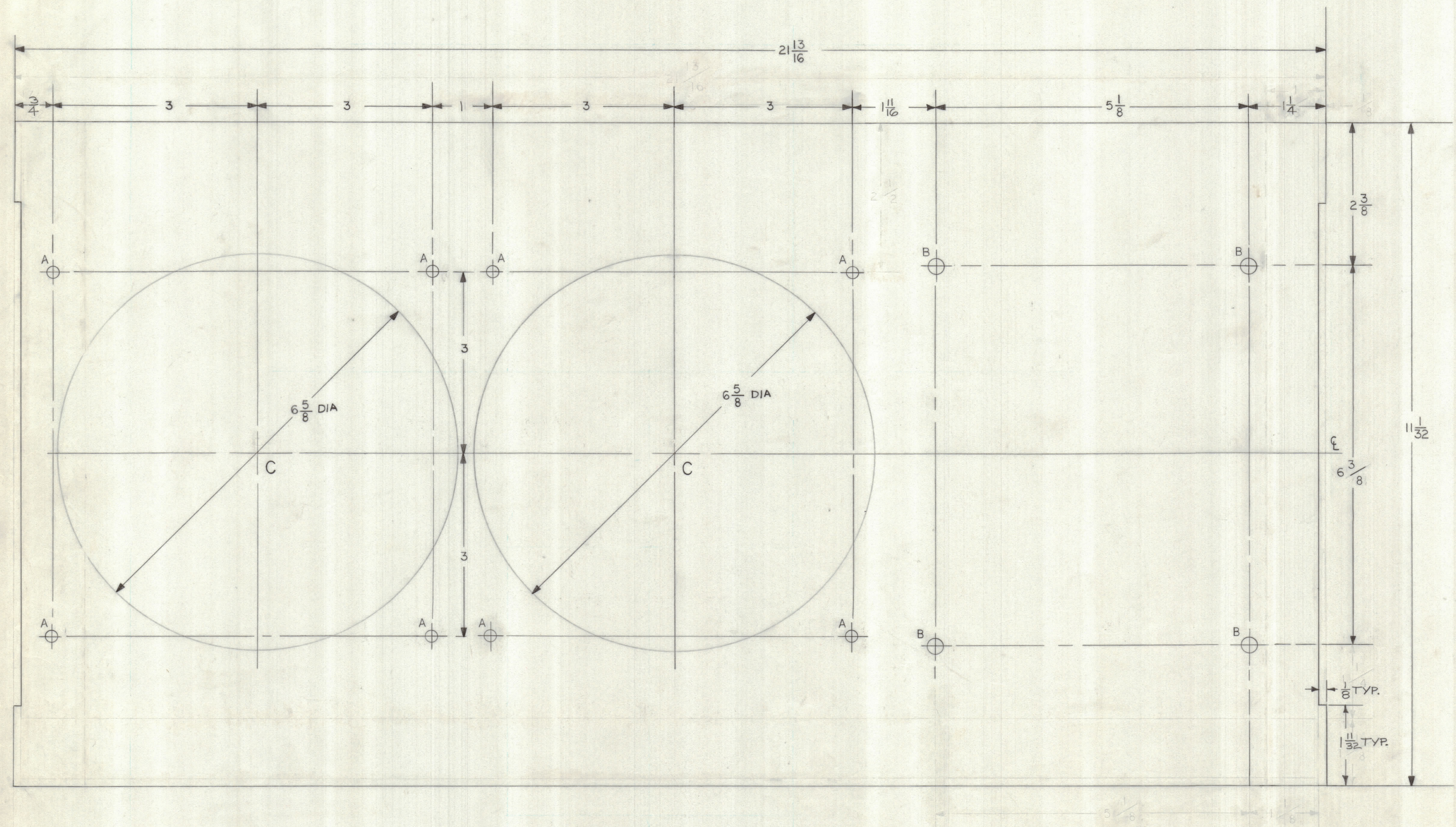


REVISIONS						
ZONE	LTR	DESCRIPTION	DATE	E.M.N.NO	DRAFT	CHKD APPD
X		DWG No. WAS 40M12D7033	8-17-68		C. G. B.	
Ø		ORIGINAL RELEASE FOR PRODUCTION	8-15-68		MIT	



NOTE: ALUM. ANGLE UNDER BOTTOM PLATE

HOLE SIZE	
A	NO 9 DRILL
B	17/64 DIA
C	6 5/8 DIA

QTY / UNIT	MODEL USED ON	ASS'Y NO.
1	SPT-3KVHF	AP139
APPLICATION		
CODE		
<small>THE TECHNICAL MATERIEL CORPORATION claims proprietary right in the material disclosed hereon. This drawing is issued in confidence for engineering information only and may not be reproduced or used to manufacture anything shown hereon without permission from THE TECHNICAL MATERIEL CORPORATION to the user. This drawing is loaned for mutual assistance and is subject to recall at any time.</small>		

TOLERANCES ON	
DECIMALS	FRACTIONS
.X ± .05	± 1/64
.XX ± .01	ANGLES
.XXX ± .005	± 0° - 30'

FINAL APPROVAL	DATE
JEP	3-20-68
MECH. DES.	DATE
JEP	11-5-68
ELECT. DES.	DATE
	8-11-68
CHECKED	DATE
R. Smith	10-MAR-68
DRAWN	DATE
CR	12-27-67

QTY. REQ.	ITEM	PART NO.	DESCRIPTION	SYMBOL
LIST OF MATERIAL				
THE TECHNICAL MATERIEL CORP. MAMARONECK, NEW YORK				
BASE PLATE BIAS MODULATOR SUPPLY				
SIZE	CODE IDENT. NO.	DWG NO.	ISSUE	
D	82679	40MS83423	Ø	
SCALE			SHEET 4 OF	