

5

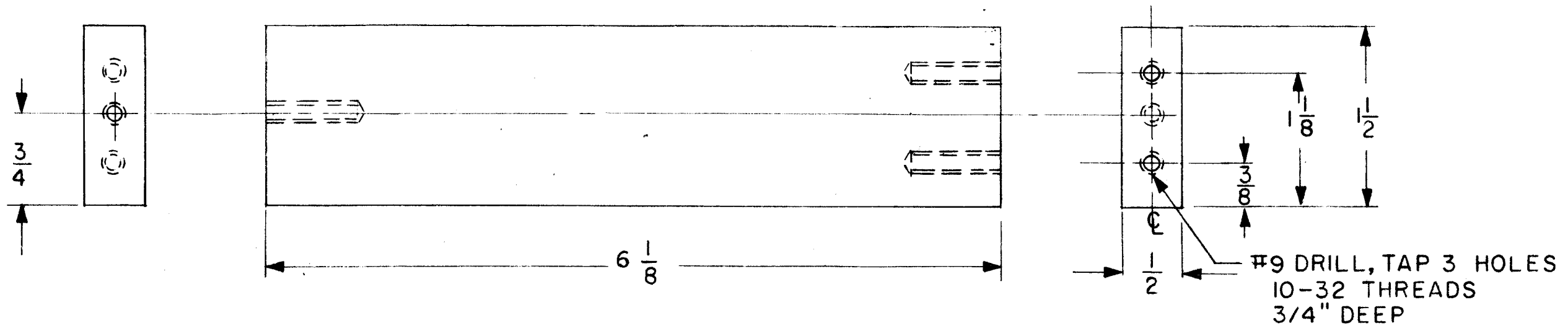
4

3

2

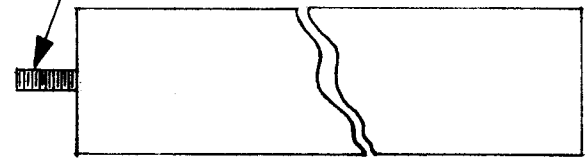
1

REVISIONS							
ZONE	LTR	DESCRIPTION	DATE	E.M.N.NO	DRAFT	CHKD	APPD
	X	DWG. No. WAS 40Q12B7194	8-22-68		C. Grob		
	Ø	ORIGINAL RELEASE	8/26/69	Ø	CG		JG



ITEM - 2

NO. 10-32
TERMINAL STUD
1-1/4 LONG



ASSEMBLY ITEM - 3

RESIWELD NO. 7200 PART A.
AND PART B. AS MADE BY
H.B. FULLER CO.

REQ'D	ITEM	PART NUMBER	DESCRIPTION	SYM.
LIST OF MATERIAL				
THE TECHNICAL MATERIEL CORP. MAMARONECK, NEW YORK				
STANDOFF INSULATOR SCREEN SUPPLY				
QTY / UNIT		MODEL USED ON	ASS'Y NO.	
2		SPT-3KVHF	AP-140	
APPLICATION				
CODE				
<p>NOTICE TO PERSONS RECEIVING THIS DRAWING THE TECHNICAL MATERIEL CORPORATION claims proprietary right in the material disclosed hereon. This drawing is issued in confidence for engineering information only and may not be reproduced or used to manufacture anything shown hereon without permission from THE TECHNICAL MATERIEL CORPORATION to the user. This drawing is loaned for mutual assistance and is subject to recall at any time.</p>				
MATERIAL		G-10 EPOXY		
FINISH		COAT CUT SURFACES WITH RESIWELD.		
FINAL APPROVAL	DATE	THE TECHNICAL MATERIEL CORP.		
J.F.	5-1-68	MAMARONECK, NEW YORK		
MECH. DES.	DATE	SIZE	CODE IDENT. NO.	DWG NO.
J.S.	12-10-67	B	82679	MS8330
ELECT. DES.	DATE	SCALE	1/1	SHEET OF
J.F.	8-13-69			
CHECKED	DATE	ISSUE		
J.F.	3-5-68	Ø		
DRAWN	DATE			
CB	3/4/68			

5

4

3

2

1