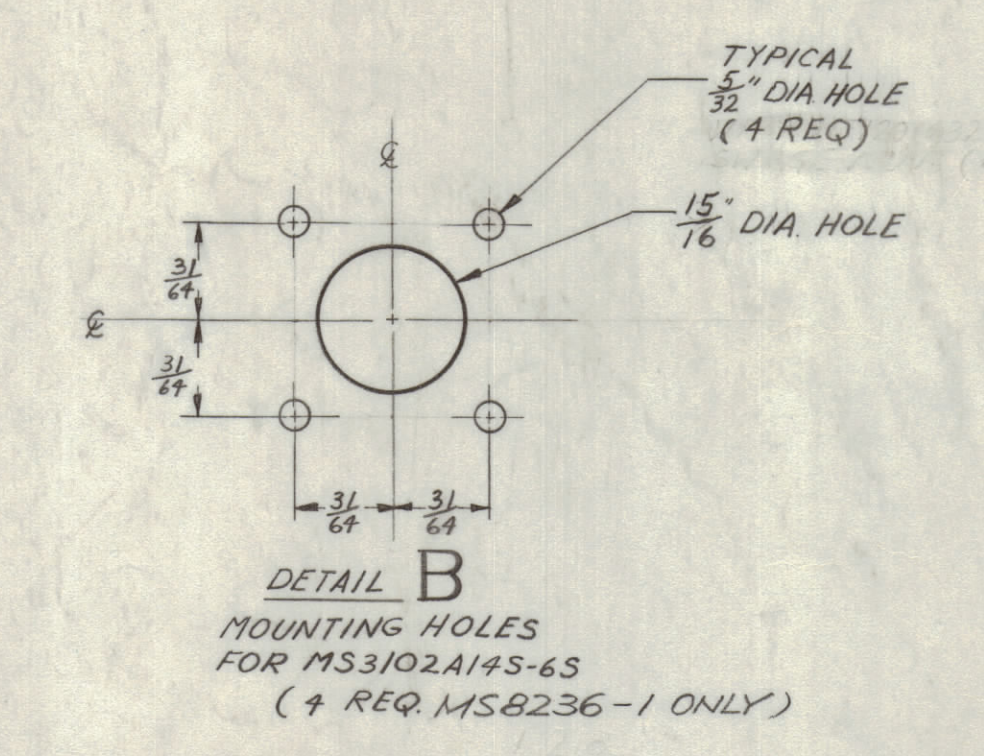
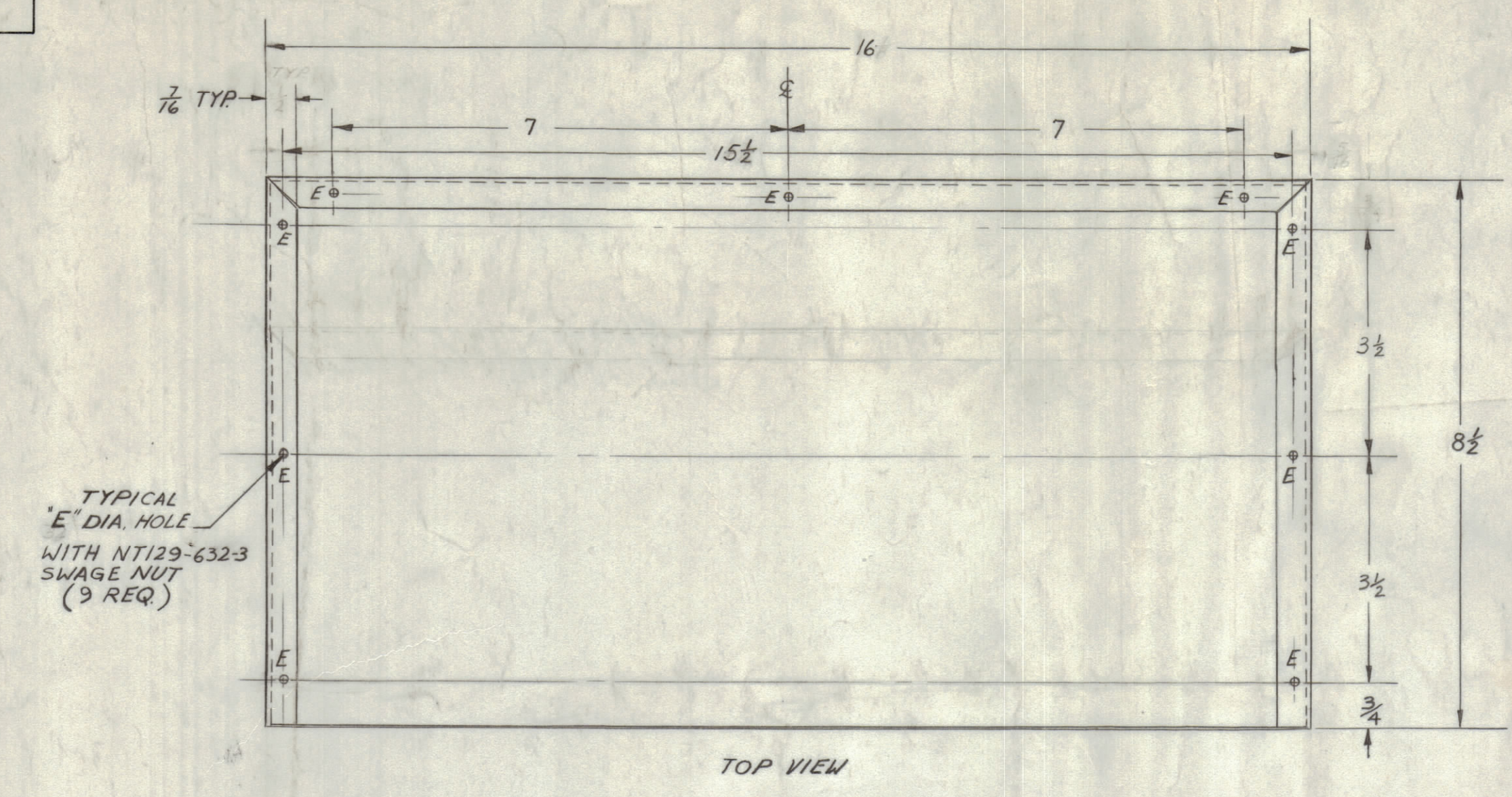
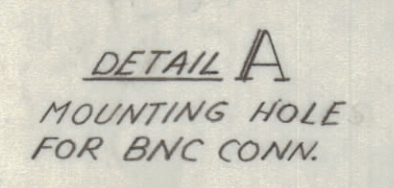


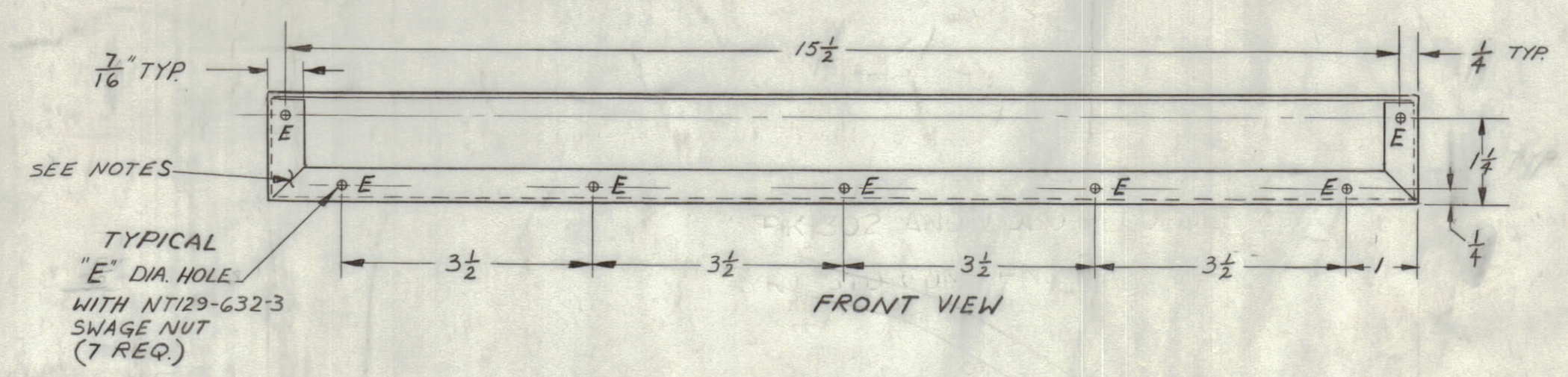
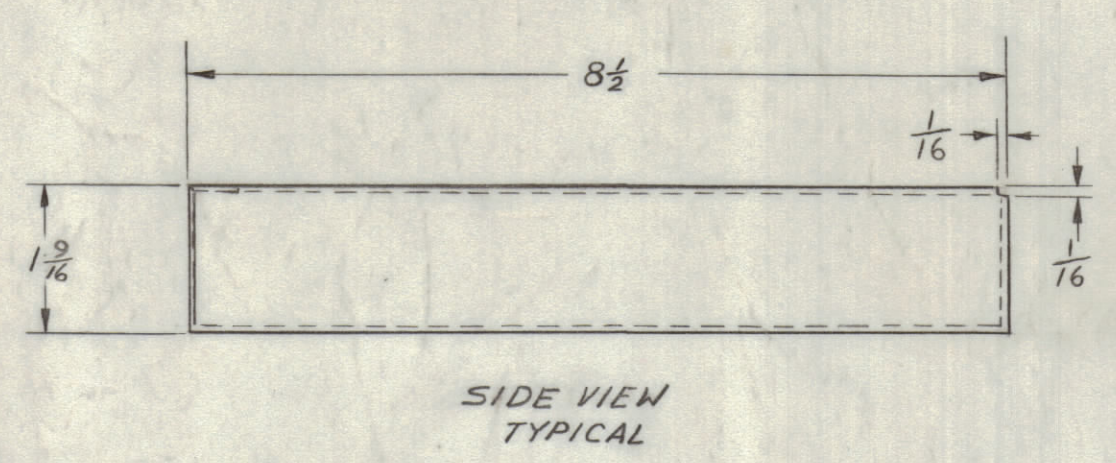
REVISIONS						
ZONE	LTR	DESCRIPTION	DATE	E.M.N.NO	DRAFT	CHKD APPD
	X	DWG. No. WAS 40M 12C 7098 40M 12C 7102 40M 12C 7103	8-20-47		C. G. R.	
	X/	MS 8236-2 ADD. & CLARIFIED	2/11/69		LH	J
		ORIGINAL RELEASE FOR PRODUCTION	3/13/69		G.R.	



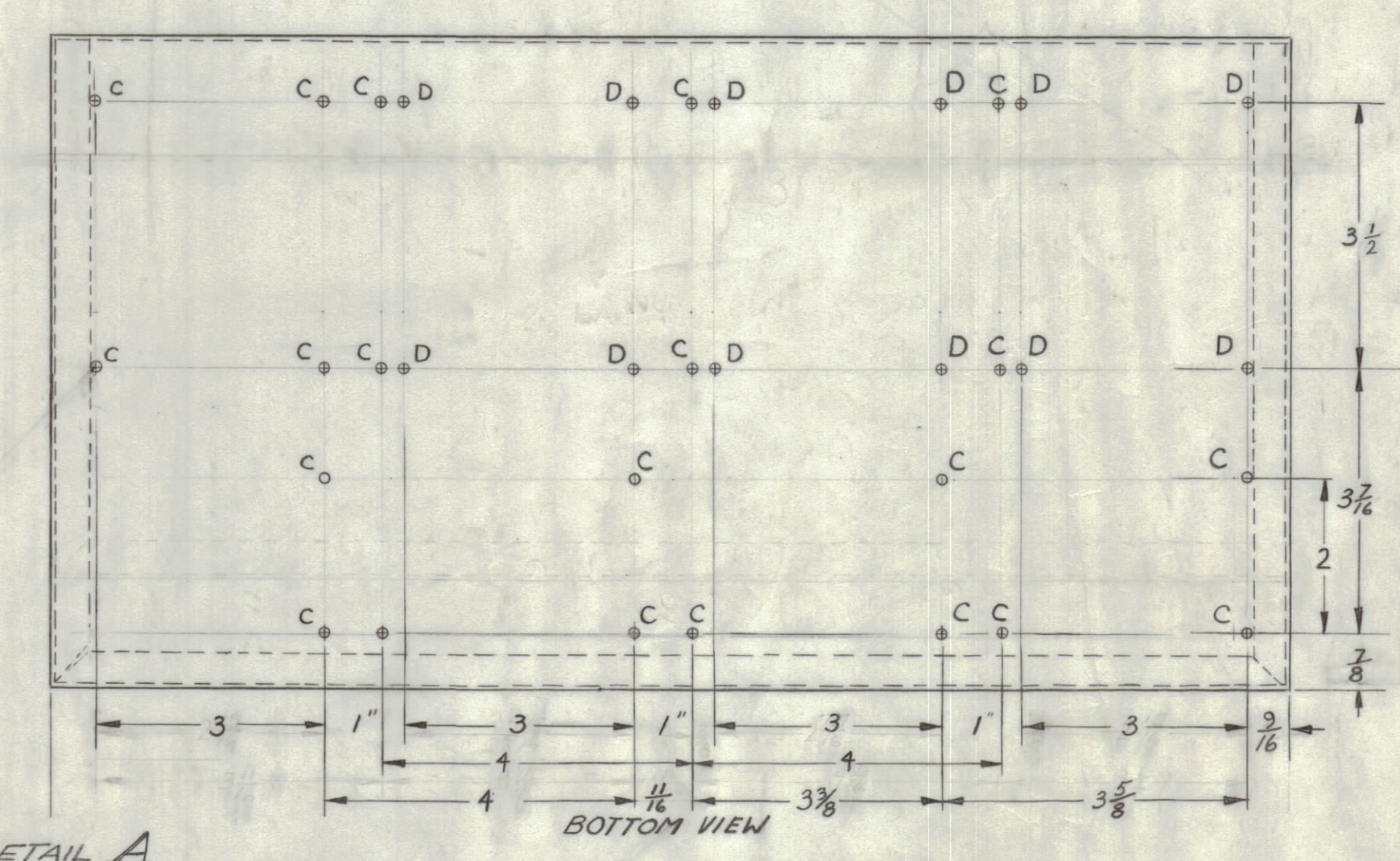
HOLE LEGEND  
 C HOLES  $\frac{1}{16}$  DIA. (17 REQ)  
 D HOLES  $\frac{5}{32}$  DIA. (16 REQ)  
 E HOLES .191 DIA. (16 REQ)



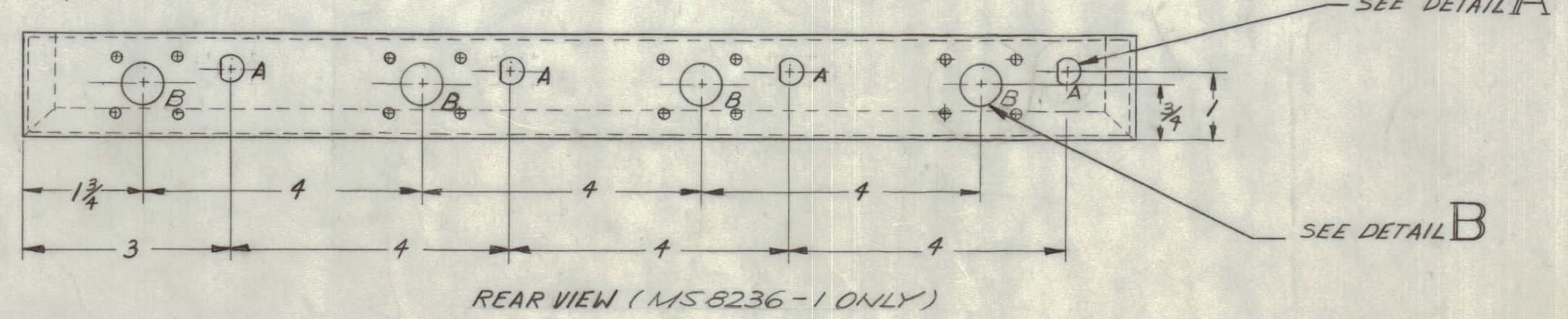
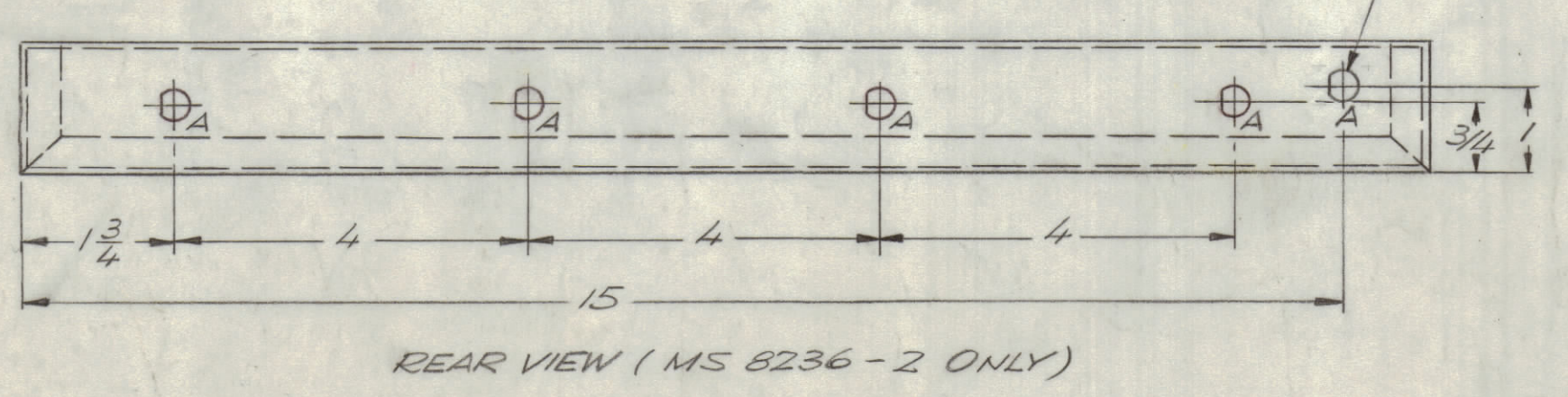
NOTES:  
 1. ROUND ALL EDGES AND REMOVE ALL BURRS ALL CORNERS TO BE SQUARE.



TYPICAL "E" DIA. HOLE WITH NT129-632-3 SWAGE NUT (7 REQ)



TYPICAL "C" DIA. HOLE WITH NT129-632-3 SWAGE NUT (3 REQ)



QTY. REQ.	ITEM	PART NO.	DESCRIPTION	SYMBOL
16	1	NT-129-632-3	SWAGE NUT	

LIST OF MATERIAL			
FINAL APPROVAL	DATE		
MECH. DES.	DATE		
ELECT. DES.	DATE		
CHECKED	DATE		
DRAWN	DATE		

THE TECHNICAL MATERIEL CORP.  
 MAMARONECK, NEW YORK  
 DEK CHASSIS CHASSIS

MS 8236-2	1	SPT-3KVHF	AX 8028
MS 8236-1	1	SPT-3K-VHF <td>AX 8037 </td>	AX 8037
QTY / UNIT		MODEL USED ON	ASS'Y NO.

APPLICATION  
 CODE  
 NOTICE TO PERSONS RECEIVING THIS DRAWING  
 THE TECHNICAL MATERIEL CORPORATION claims proprietary right in the material disclosed herein. This drawing is issued in confidence for engineering information only and may not be reproduced or used to manufacture anything shown herein without permission from THE TECHNICAL MATERIEL CORPORATION to the user. This drawing is loaned for mutual assistance and is subject to recall at any time.

UNLESS OTHERWISE SPECIFIED DIMENSIONS ARE IN INCHES AND INCLUDE CHEMICALLY APPLIED OR PLATED FINISHES  
 TOLERANCES ON  
 DECIMALS .X ± .05 FRACTIONS ± 1/64 ANGLES ± 0°-30'  
 MATERIAL .051 ALUMINUM 5052-H32  
 FINISH S104 YELLOW IRIDITE

SIZE	CODE IDENT. NO.	DWG NO.	ISSUE
D	82679	MS8236	1

SCALE 1/2" = 1" SHEET 1 OF 1