

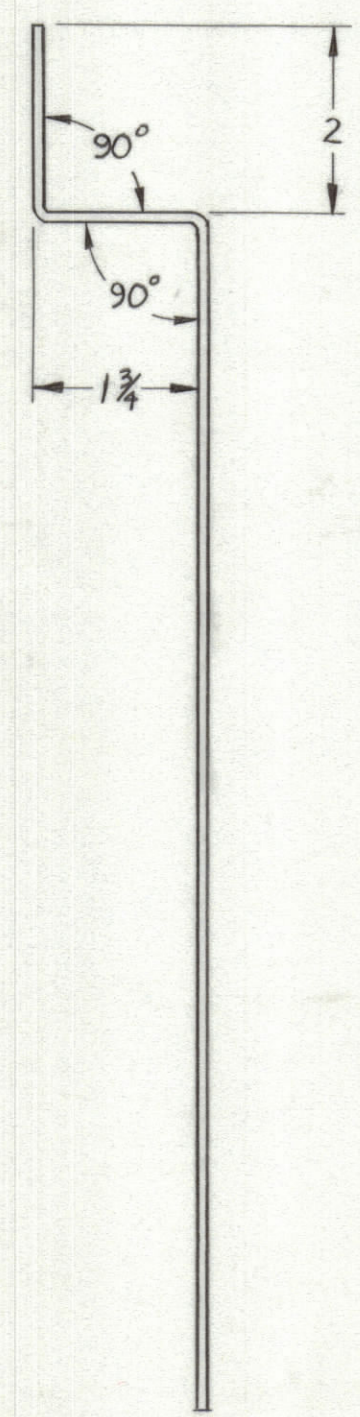
4

3

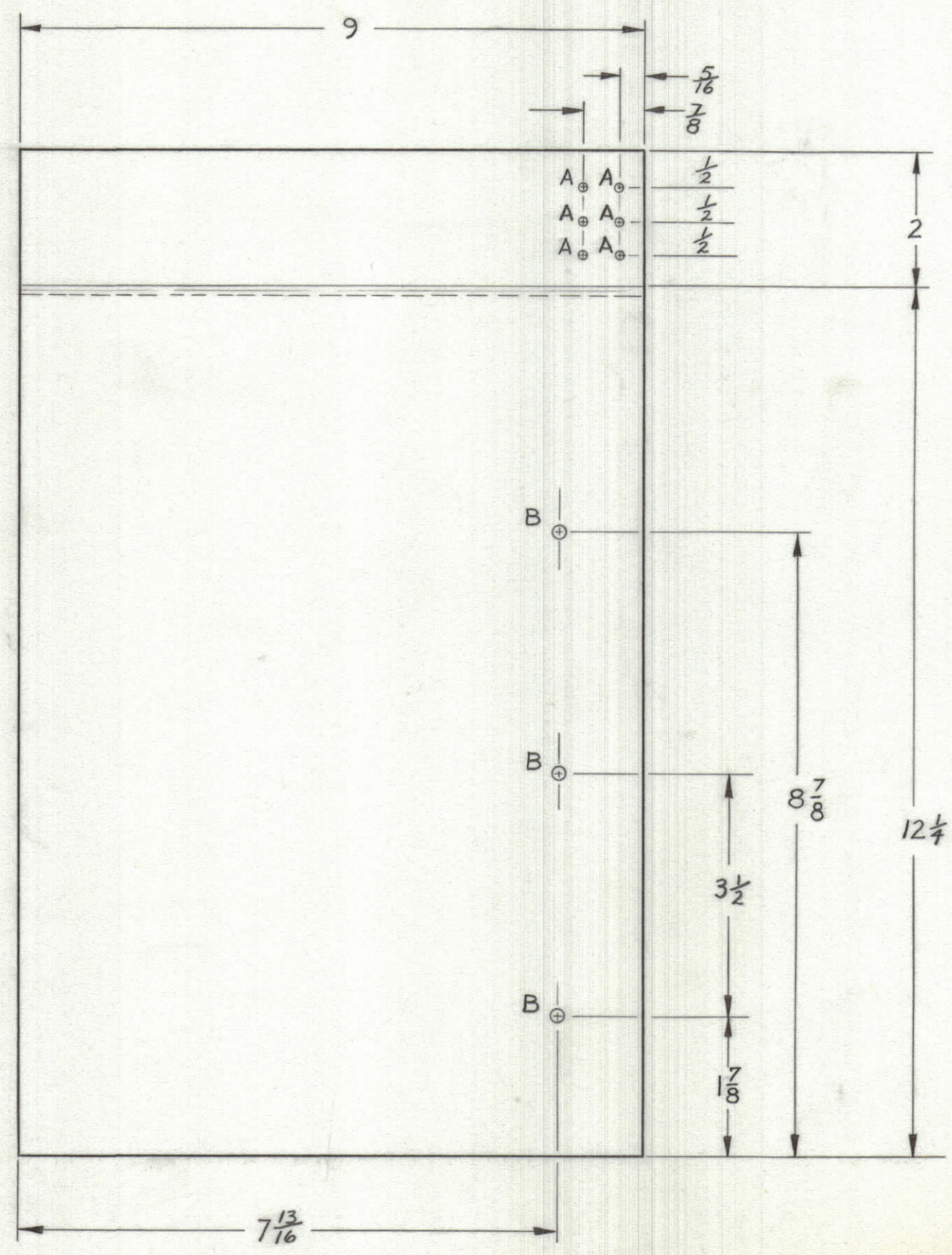
2

1

REVISIONS					
ZONE	LTR	DESCRIPTION	DATE	E.M.N.NO	APPD



SIDE VIEW



FRONT VIEW

HOLE GUIDE  
 "A" HOLES  $\frac{3}{32}$ " DIA. DRILL  
 (6 HOLES REQ.)  
 "B" HOLES  $\frac{3}{16}$ " DIA. DRILL  
 AND TAP (3 HOLES REQ.)

MS 8213

φ

B

QTY. REQ.	ITEM	PART NO.	DESCRIPTION	SYMBOL
LIST OF MATERIAL				
FINAL APPROVAL		DATE	<b>THE TECHNICAL MATERIEL CORP.</b> MAMARONECK, NEW YORK  <b>SIDE PANEL, LEFT</b>	
MECH. DES.		DATE		
ELECT. DES.		DATE		
CHECKED		DATE		
DRAWN		DATE		
SIZE	CODE IDENT.NO.	DWG NO.	ISSUE	
C	82679	MS 8213	φ	
SCALE $\frac{1}{2} \times 1"$			SHEET 1 OF 1	

UNLESS OTHERWISE SPECIFIED  
 DIMENSIONS ARE IN INCHES  
 AND INCLUDE CHEMICALLY APPLIED  
 OR PLATED FINISHES

TOLERANCES ON	
DECIMALS	FRACTIONS
.X ± .05	± 1/64
.XX ± .01	ANGLES
.XXX ± .005	± 0° -30'

1	UNIT 19 C	ASS'Y NO.
QTY / UNIT	MODEL USED ON	
APPLICATION		
	CODE	
NOTICE TO PERSONS RECEIVING THIS DRAWING THE TECHNICAL MATERIEL CORPORATION claims proprietary right in the material disclosed hereon. This drawing is issued in confidence for engineering information only and may not be reproduced or used to manufacture anything shown hereon without permission from THE TECHNICAL MATERIEL CORPORATION to the user. This drawing is loaned for mutual assistance and is subject to recall at any time.		

4

3

2

1

A