

5

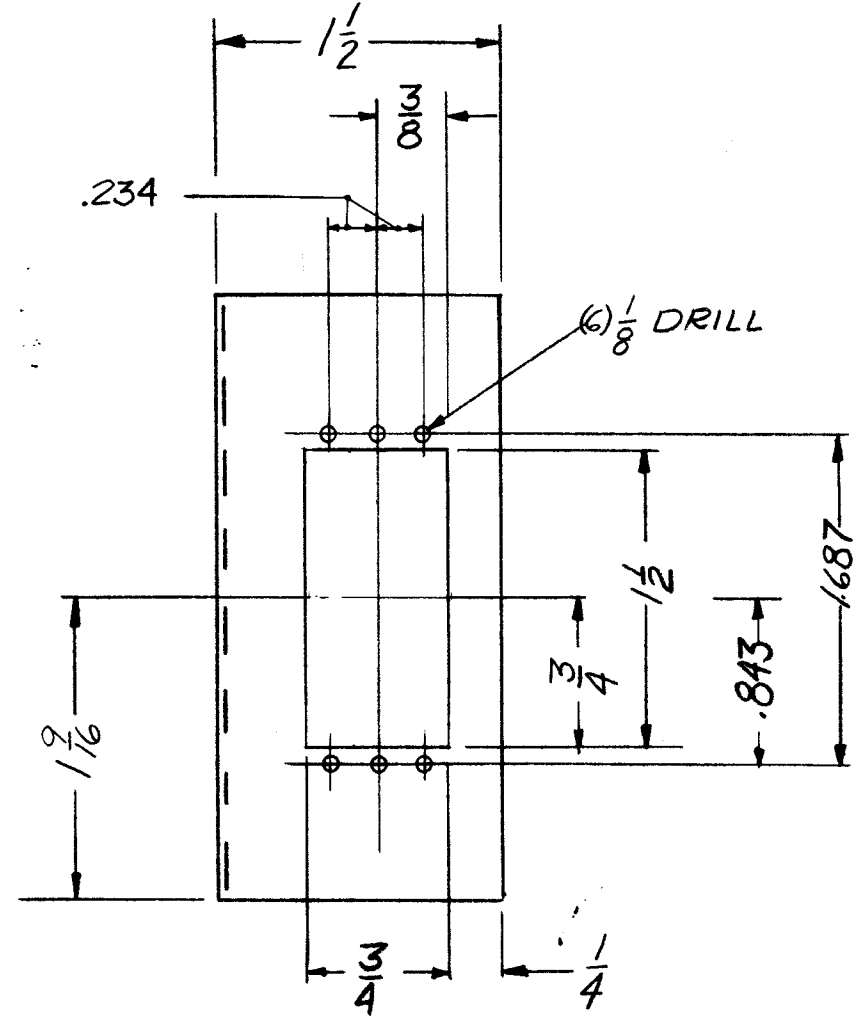
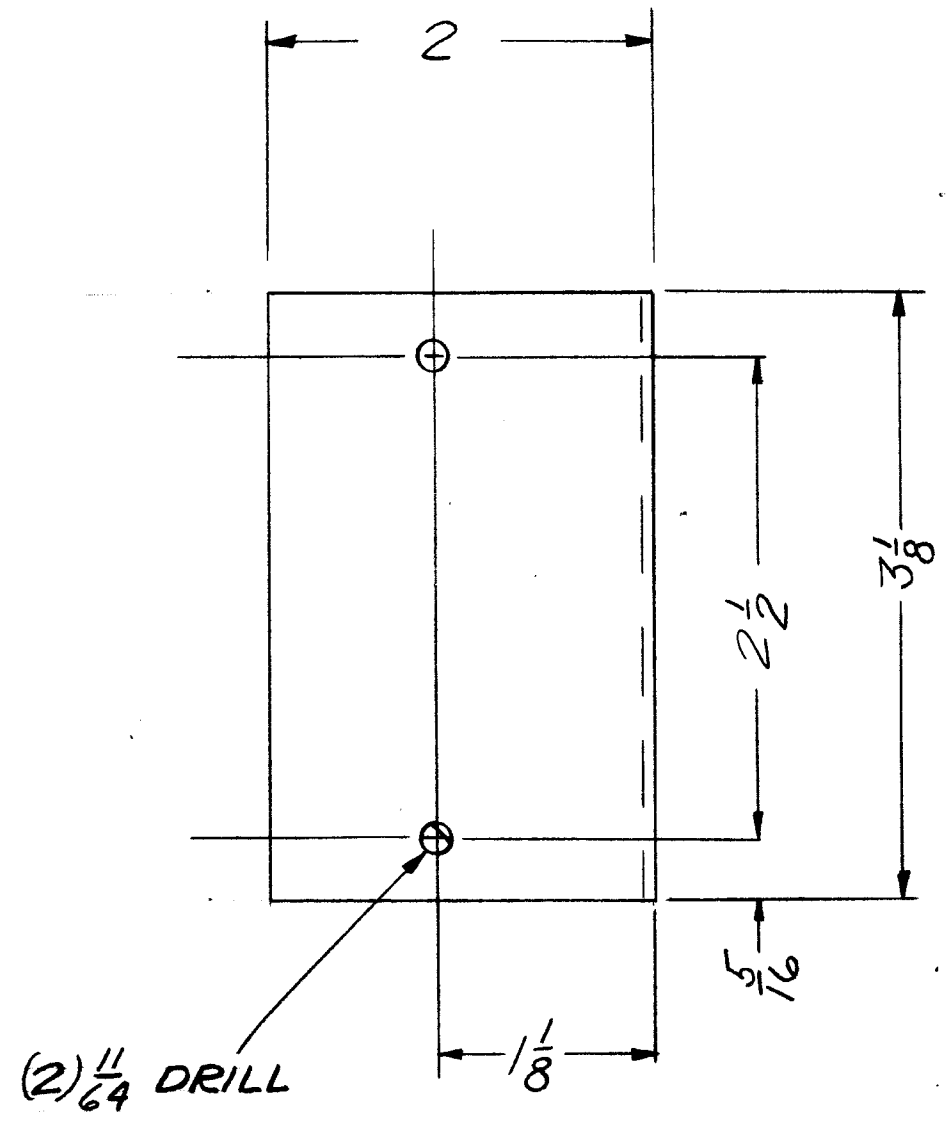
4

3

2

1

REVISIONS						
ZONE	LTR	DESCRIPTION	DATE	E.M.N.NO	DRAFT	CHKD APPD



1 / 16D FRAME/J1369
 1 / 13A FRAME

QTY / UNIT	MODEL USED ON	ASS'Y NO.
APPLICATION		
CODE		

NOTICE TO PERSONS RECEIVING THIS DRAWING
 THE TECHNICAL MATERIEL CORPORATION claims proprietary right in the material disclosed hereon. This drawing is issued in confidence for engineering information only and may not be reproduced or used to manufacture anything shown hereon without permission from THE TECHNICAL MATERIEL CORPORATION to the user. This drawing is loaned for mutual assistance and is subject to recall at any time.

UNLESS OTHERWISE SPECIFIED DIMENSIONS ARE IN INCHES AND INCLUDE CHEMICALLY APPLIED OR PLATED FINISHES

DECIMALS	FRACTIONS
.X ± .05	1/64
.XX ± .01	TOLS. ANGLES
.XXX ± .005	0° - 30'

MATERIAL
 .064 ALUM
 5052 - H32

FINISH
 S404-IRIDITE

REQ'D	ITEM	PART NUMBER	DESCRIPTION	SYM.
LIST OF MATERIAL				
FINAL APPROVAL <i>[Signature]</i> DATE 6-5-68				
MECH. DES. <i>[Signature]</i> DATE 1-3-68				
ELECT. DES. <i>[Signature]</i> DATE 1-3-68				
CHECKED <i>[Signature]</i> DATE 5-1-68				
DRAWN <i>[Signature]</i> DATE 3-5-68				
THE TECHNICAL MATERIEL CORP. MAMARONECK, NEW YORK			CONN. CLIP UNIT 13A & 16D	
SIZE	CODE IDENT. NO.	DWG NO.	ISSUE	
B	82679	MS 8205	Ø	
SCALE FULL			SHEET	OF