

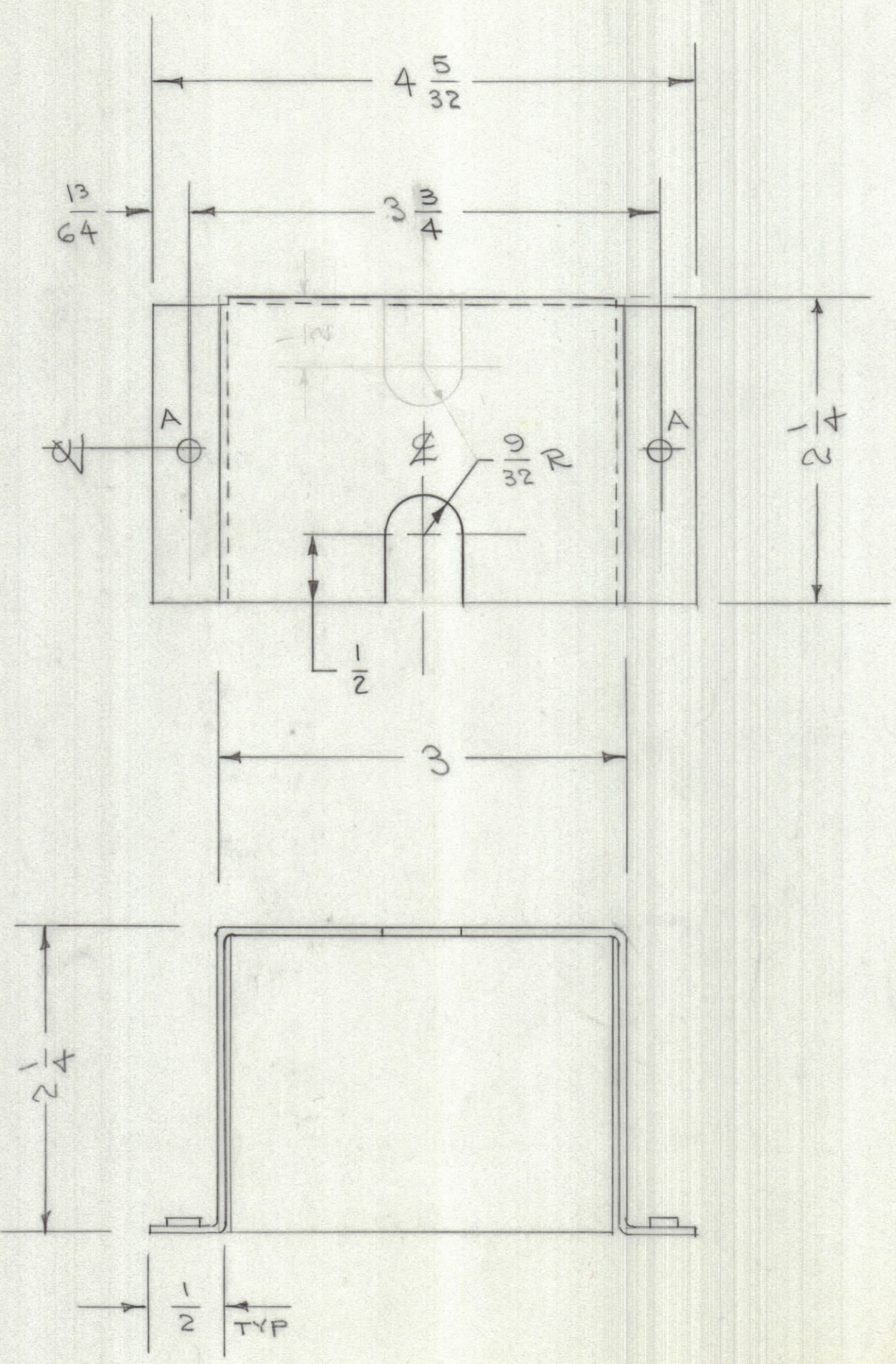
4

3

2

1

REVISIONS							
ZONE	LTR	DESCRIPTION	DATE	E.M.N.NO	DRAFT	CHKD	APPD



A HOLES - .191-.194 DIA 2 REQ'D

QTY. REQ.	ITEM	PART NO.	DESCRIPTION	SYMBOL
1	2	EY102-23	GROMMET	
2	1	NT129-632-3	NUT, ROUND, SWAGE TYPE	

LIST OF MATERIAL

UNLESS OTHERWISE SPECIFIED DIMENSIONS ARE IN INCHES AND INCLUDE CHEMICALLY APPLIED OR PLATED FINISHES

TOLERANCES ON  
 DECIMALS .X ± .05  
 .XX ± .01  
 .XXX ± .005  
 FRACTIONS ± 1/64  
 ANGLES ± 0° -30'

MATERIAL .051 THK  
 5052 H32 ALUMINUM  
 FINISH  
 S404 IRIDITE

FINAL APPROVAL <i>SM</i>	DATE 1-27-68
MECH. DES. <i>R di Fato</i>	DATE 12-28-67
ELECT. DES.	DATE
CHECKED G. ORLANDI	DATE 1-27-68
DRAWN C. IDEAN	DATE 12-28-67

THE TECHNICAL MATERIEL CORP.  
 MAMARONECK, NEW YORK

SWITCH BRACKET  
 UNIT 16 B

1	16 B	
QTY / UNIT	MODEL USED ON	ASS'Y NO.
APPLICATION		
	CODE	

NOTICE TO PERSONS RECEIVING THIS DRAWING  
 THE TECHNICAL MATERIEL CORPORATION claims proprietary right in the material disclosed hereon. This drawing is issued in confidence for engineering information only and may not be reproduced or used to manufacture anything shown hereon without permission from THE TECHNICAL MATERIEL CORPORATION to the user. This drawing is loaned for mutual assistance and is subject to recall at any time.

SIZE	CODE IDENT. NO.	DWG NO.	ISSUE
C	82679	MS8152	
SCALE		SHEET	OF

4

3

2

1

M98152  
 0  
 B