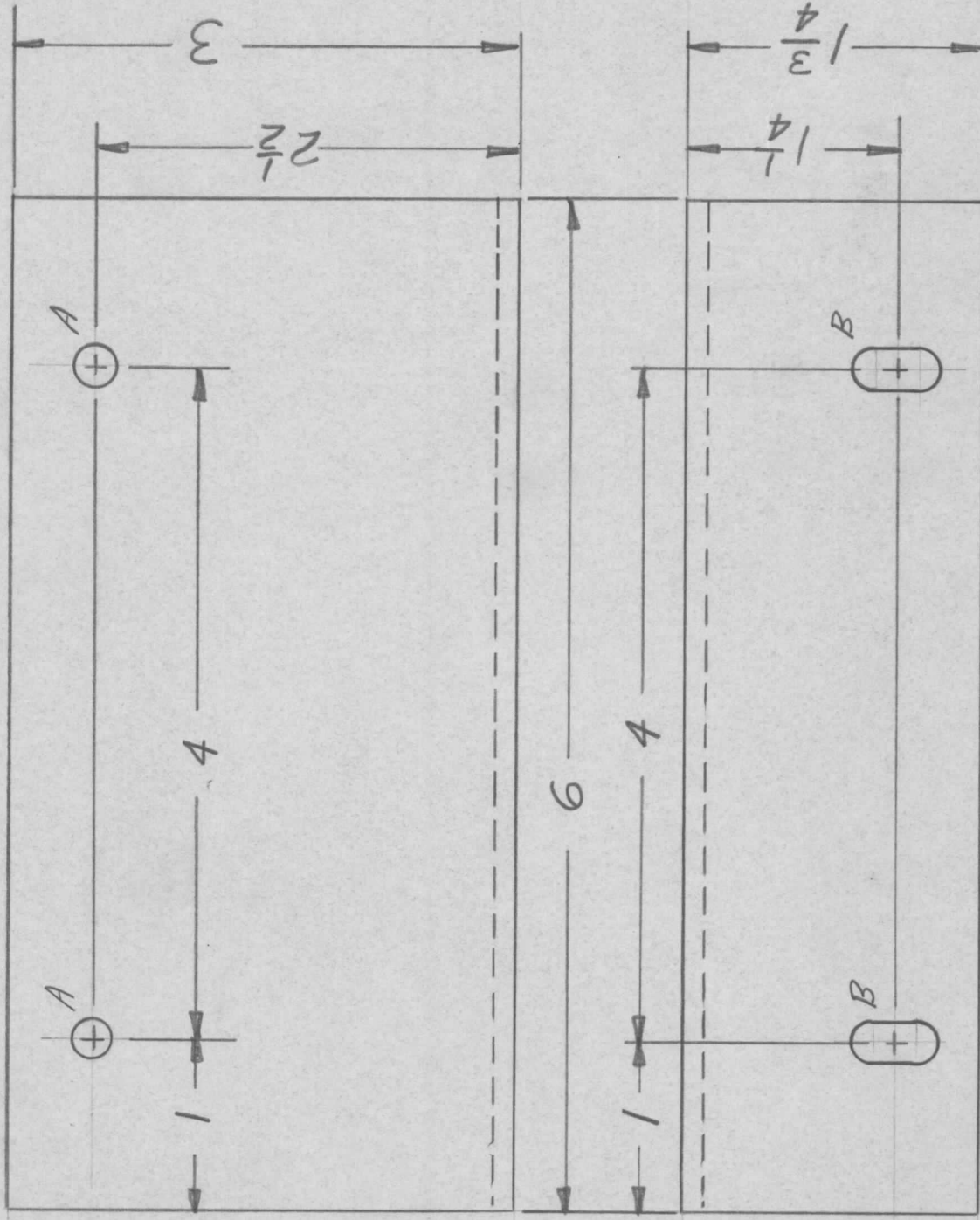


APPLICATION

REVISIONS

QTY	MODEL USED ON	ASS'Y NO.	LTR	DESCRIPTION	DATE	E.M.N.NO	DRAFT	CHKD	APPD
2	RACK 7A								



A ~ 15/64 DIA. 2 REQ. B ~ 1/4 x 1/2 SLOT 2 REQ.

UNLESS OTHERWISE SPECIFIED DIMENSIONS ARE IN INCHES AND INCLUDE CHEMICALLY APPLIED OR PLATED FINISHES	REQ'D ITEM	PART NUMBER	DESCRIPTION	SYM.
DECIMALS X ± .05 .XX ± .01 .XXX ± .005	FINAL APPROVAL		LIST OF MATERIAL	
FRACTIONS 1/64 ANGLES 0°-30°	MECH. DES.		THE TECHNICAL MATERIEL CORP. MAMARONECK, NEW YORK	
MATERIAL 1/8 ALUM 5052-H32	ELECT. DES.		BRACKET, INTERFACE MTG.	
FINISH S404 VEL. IRID	CHECKED G. ORLANDI		SIZE A	CODE IDENT. NO. MS8140
	DRAWN JMA		SCALE	ISSUE
				OF

NOTICE TO PERSONS RECEIVING THIS DRAWING  
THE TECHNICAL MATERIEL CORPORATION claims proprietary right in the material disclosed hereon. This drawing is issued in confidence for engineering information only and may not be reproduced or used to manufacture anything shown hereon without permission from THE TECHNICAL MATERIEL CORPORATION to the user. This drawing is loaned for mutual assistance and is subject to recall at any time.