

4

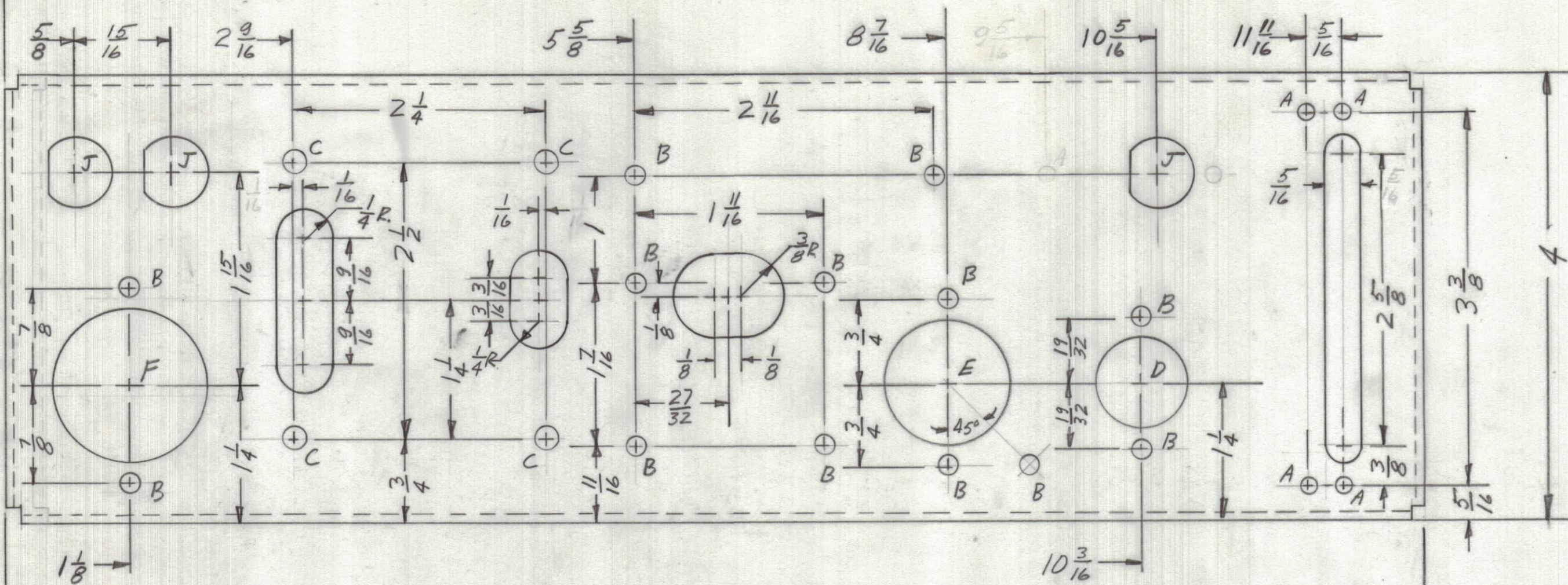
3

2

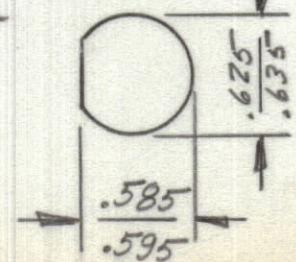
1

REVISIONS						
ZONE	LTR	DESCRIPTION	DATE	E.M.N.NO	DRAFT	CHKD APPD

LOCATING BASELINE



- A ~ 9/64 DIA. 4 REQ.
- B ~ 11/64 DIA. 13 REQ.
- C ~ 13/64 DIA. 4 REQ.
- D ~ 13/16 DIA. 1 REQ.
- E ~ 1 1/8 DIA. 1 REQ.
- F ~ 1 3/8 DIA. 1 REQ.
- G ~ .191-.194 8 REQ.
- H ~ .221-.224 4 REQ.
- J ~ 3 REQ.



1 MOUNT IN ALL G HOLES AS SHOWN.

2 MOUNT IN ALL H HOLES AS SHOWN.

REF: LDB032

QTY. REQ.	ITEM	PART NO.	DESCRIPTION	SYMBOL
4	2	NT129-0832-4	NUT, PLN. SPLINE	H
8	1	NT129-0632-4	NUT, PLN. SPLINE	G

LIST OF MATERIAL

UNLESS OTHERWISE SPECIFIED DIMENSIONS ARE IN INCHES AND INCLUDE CHEMICALLY APPLIED OR PLATED FINISHES	FINAL APPROVAL <i>[Signature]</i>	DATE 1-2-68
TOLERANCES ON	MECH. DES. <i>[Signature]</i>	DATE 1-2-68
DECIMALS .X ± .05 .XX ± .01 .XXX ± .005	ELECT. DES.	DATE
FRACTIONS ± 1/64 ANGLES ± 0° -30'	CHECKED G. ORLANDI	DATE 1-2-68
	DRAWN <i>[Signature]</i>	DATE 12-16-67

THE TECHNICAL MATERIEL CORP.
MAMARONECK, NEW YORK

CHASSIS, P.S. AX8009

1	AX8009	
QTY / UNIT	MODEL USED ON	ASS'Y NO.
APPLICATION		
	CODE	

MATERIAL .081 ALUM	SIZE	CODE IDENT.NO.	DWG NO.	ISSUE
5052-H32	C	82679	MS8138	φ
FINISH	SCALE	SHEET		OF
S404 VEL. IRID.				

NOTICE TO PERSONS RECEIVING THIS DRAWING
THE TECHNICAL MATERIEL CORPORATION claims proprietary right in the material disclosed hereon. This drawing is issued in confidence for engineering information only and may not be reproduced or used to manufacture anything shown hereon without permission from THE TECHNICAL MATERIEL CORPORATION to the user. This drawing is loaned for mutual assistance and is subject to recall at any time.

4

3

2

1

MS8138