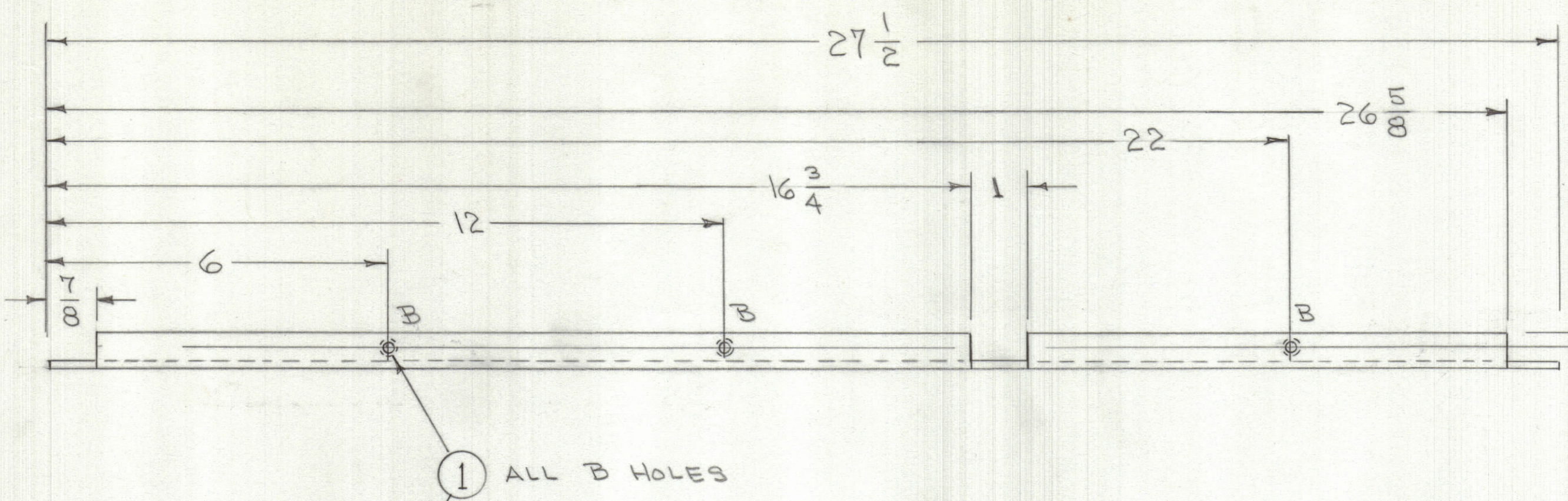
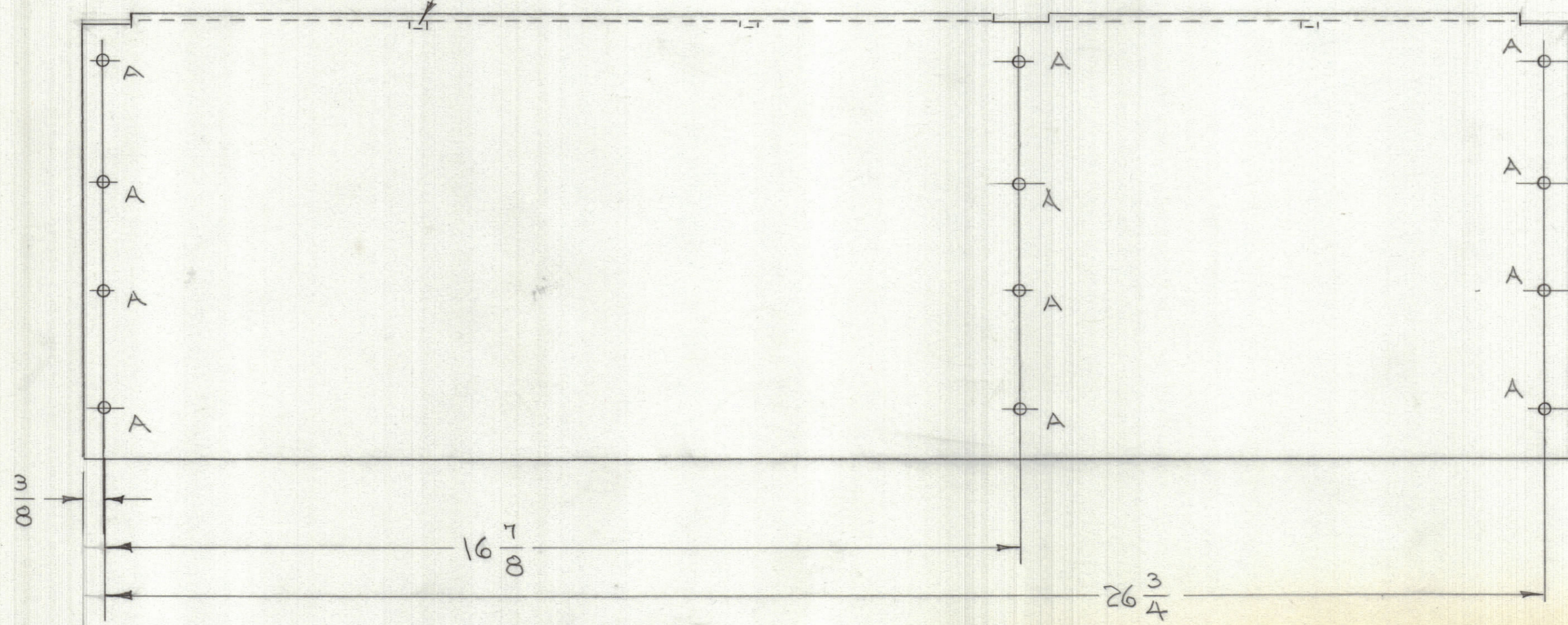
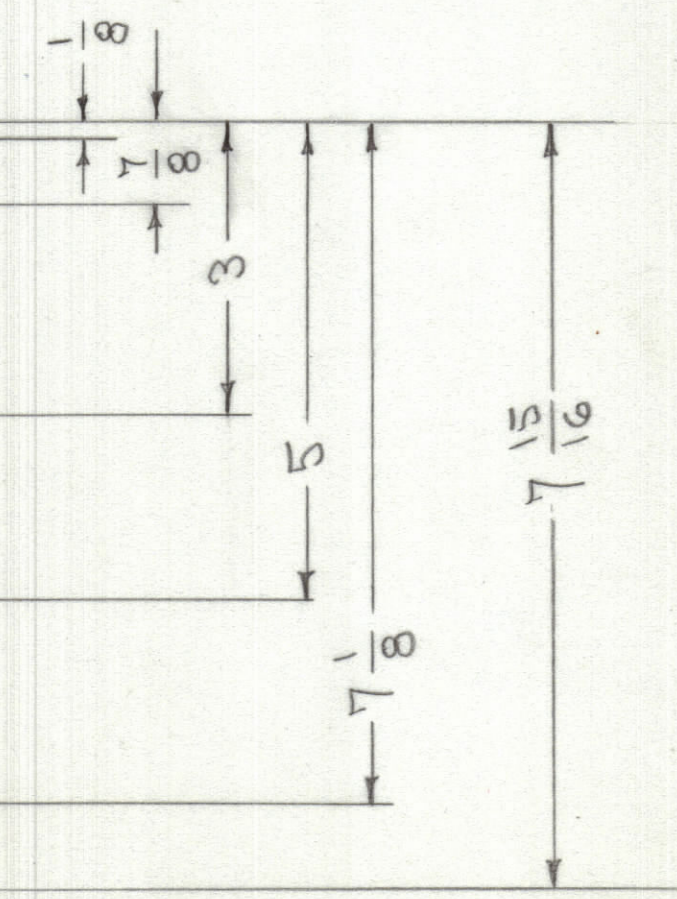
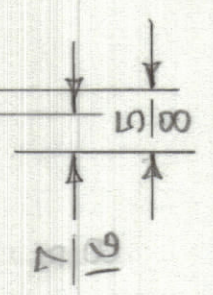


REVISIONS							
ZONE	LTR	DESCRIPTION	DATE	E.M.N.NO	DRAFT	CHKD	APPD



A HOLES - 5/32 (.156) DIA
12 REQ'D
B HOLES - .161-.164 DIA
3 REQ'D



MS8123-1 AS SHOWN RIGHT SIDE
-2 OPPOSITE BEND LEFT SIDE

QTY. REQ.	ITEM	PART NO.	DESCRIPTION	SYMBOL
3	L	NT129-440-A	NUT, ROUND, SWAGE TYPE	

FINAL APPROVAL		DATE
<i>Ben Nap</i>		3-20-68
MECH. DES.		DATE
<i>[Signature]</i>		3-7-68
ELECT. DES.		DATE
<i>[Signature]</i>		
CHECKED		DATE
G. ORLANDI		3-18-68
DRAWN		DATE
C.D. DEAN		12-12-67

LIST OF MATERIAL			
THE TECHNICAL MATERIEL CORP. MAMARONECK, NEW YORK			
SIDE PLATES			
SCALE	CODE IDENT. NO.	DWG. NO.	ISSUE
C	82679	MS8123	Ø
SHEET			OF

1 EACH	TCRM-1	ASS'Y NO.
QTY / UNIT	MODEL USED ON	
APPLICATION		
CODE		

UNLESS OTHERWISE SPECIFIED
DIMENSIONS ARE IN INCHES
AND INCLUDE CHEMICALLY APPLIED
OR PLATED FINISHES

TOLERANCES ON

DECIMALS	FRACTIONS
.X ± .05	± 1/64
.XX ± .01	ANGLES
.XXX ± .005	± 0° -30'

MATERIAL .064 THK
5052 H32 ALUMINUM

FINISH
8404 IRIDITE

NOTICE TO PERSONS RECEIVING THIS DRAWING
THE TECHNICAL MATERIEL CORPORATION claims proprietary right in the material disclosed hereon.
This drawing is issued in confidence for engineering information only and may not be reproduced or used
to manufacture anything shown hereon without permission from THE TECHNICAL MATERIEL CORPORATION
to the user. This drawing is loaned for mutual assistance and is subject to recall at any time.

MS8123 Ø B