

4

3

2

1

REVISIONS							
ZONE	LTR	DESCRIPTION	DATE	E.M.N.NO	DRAFT	CHKD	APPD

D

D

C

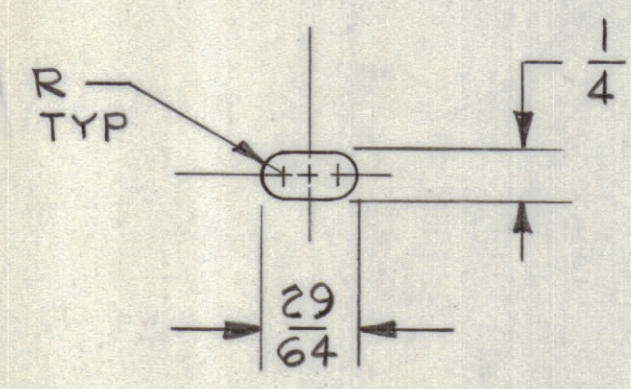
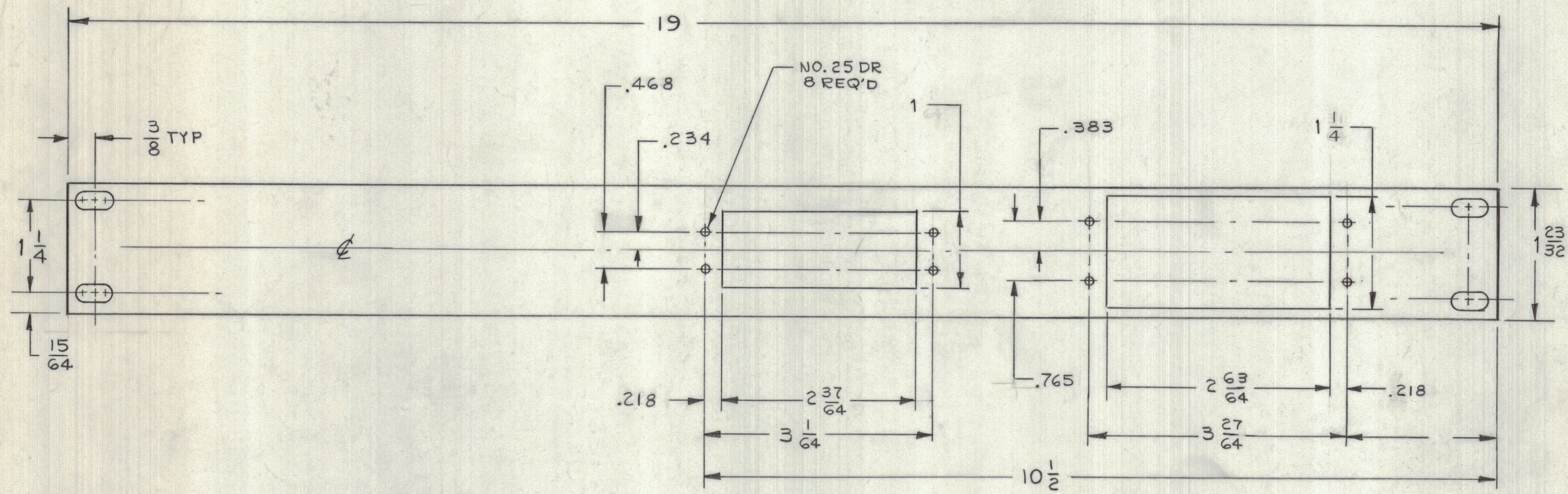
C

B

B

A

A



SLOT DETAIL
4 REQ'D

MS 8097

UNIT - 19		
QTY / UNIT	MODEL USED ON	ASS'Y NO.
APPLICATION		
CODE		

NOTICE TO PERSONS RECEIVING THIS DRAWING
 THE TECHNICAL MATERIEL CORPORATION claims proprietary right in the material disclosed hereon. This drawing is issued in confidence for engineering information only and may not be reproduced or used to manufacture anything shown hereon without permission from THE TECHNICAL MATERIEL CORPORATION to the user. This drawing is loaned for mutual assistance and is subject to recall at any time.

UNLESS OTHERWISE SPECIFIED DIMENSIONS ARE IN INCHES AND INCLUDE CHEMICALLY APPLIED OR PLATED FINISHES

TOLERANCES ON

DECIMALS	FRACTIONS
.X ± .05	± 1/64
.XX ± .01	ANGLES
.XXX ± .005	± 0° -30'

MATERIAL 1/8 THK ALUM 5052-H32
 FINISH S114 IRIDITE
 S115 PRIMER } FRONT & EDGES
 S115 ENAMEL }

QTY. REQ.	ITEM	PART NO.	DESCRIPTION	SYMBOL
LIST OF MATERIAL				
FINAL APPROVAL <i>gjm</i> DATE 1-2-68 MECH. DES. DATE F.O'Donnell 12-3-67 ELECT. DES. DATE CHECKED G. O'ELANDI DATE 12-27-67 DRAWN Amiska 12-4-67				
THE TECHNICAL MATERIEL CORP. MAMARONECK, NEW YORK PANEL, REAR CONNECTOR UNIT-19				
MATERIAL		SIZE	CODE IDENT.NO	DWG NO.
ALUM 5052-H32		C	82679	MS 8097
FRONT & EDGES		SCALE	FULL	SHEET OF

4

3

2

1