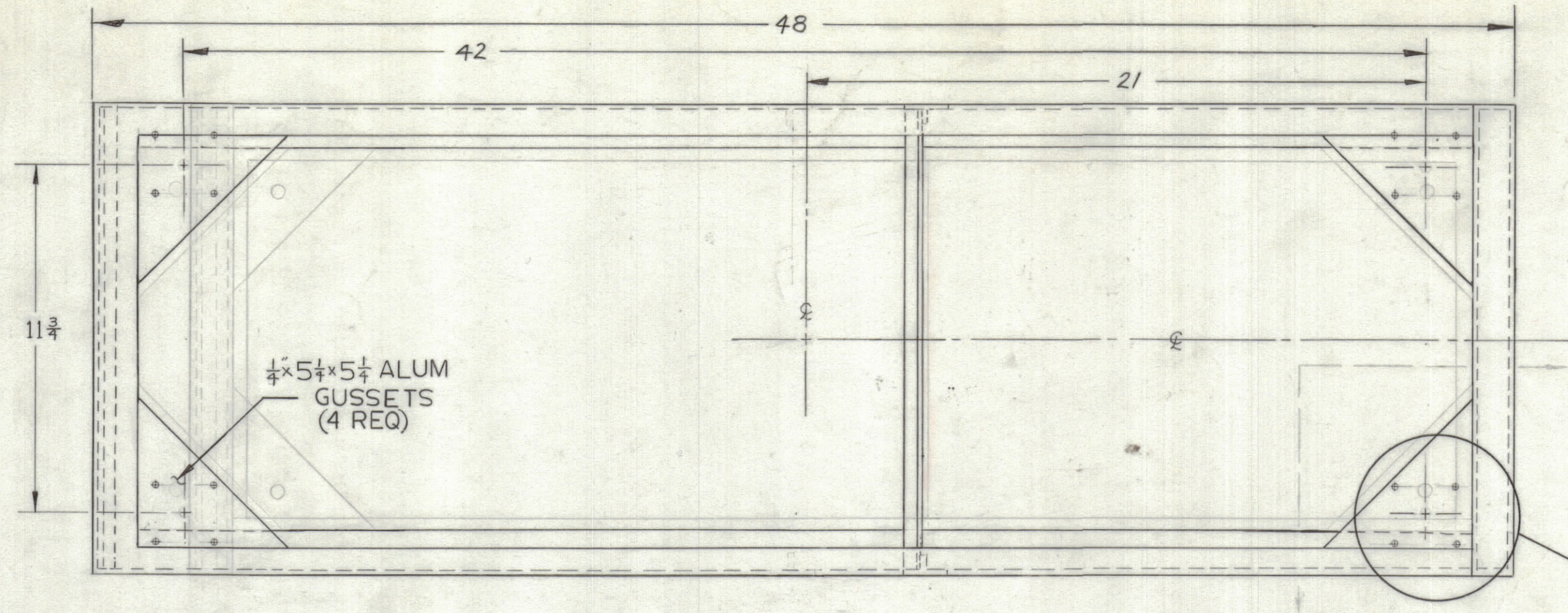
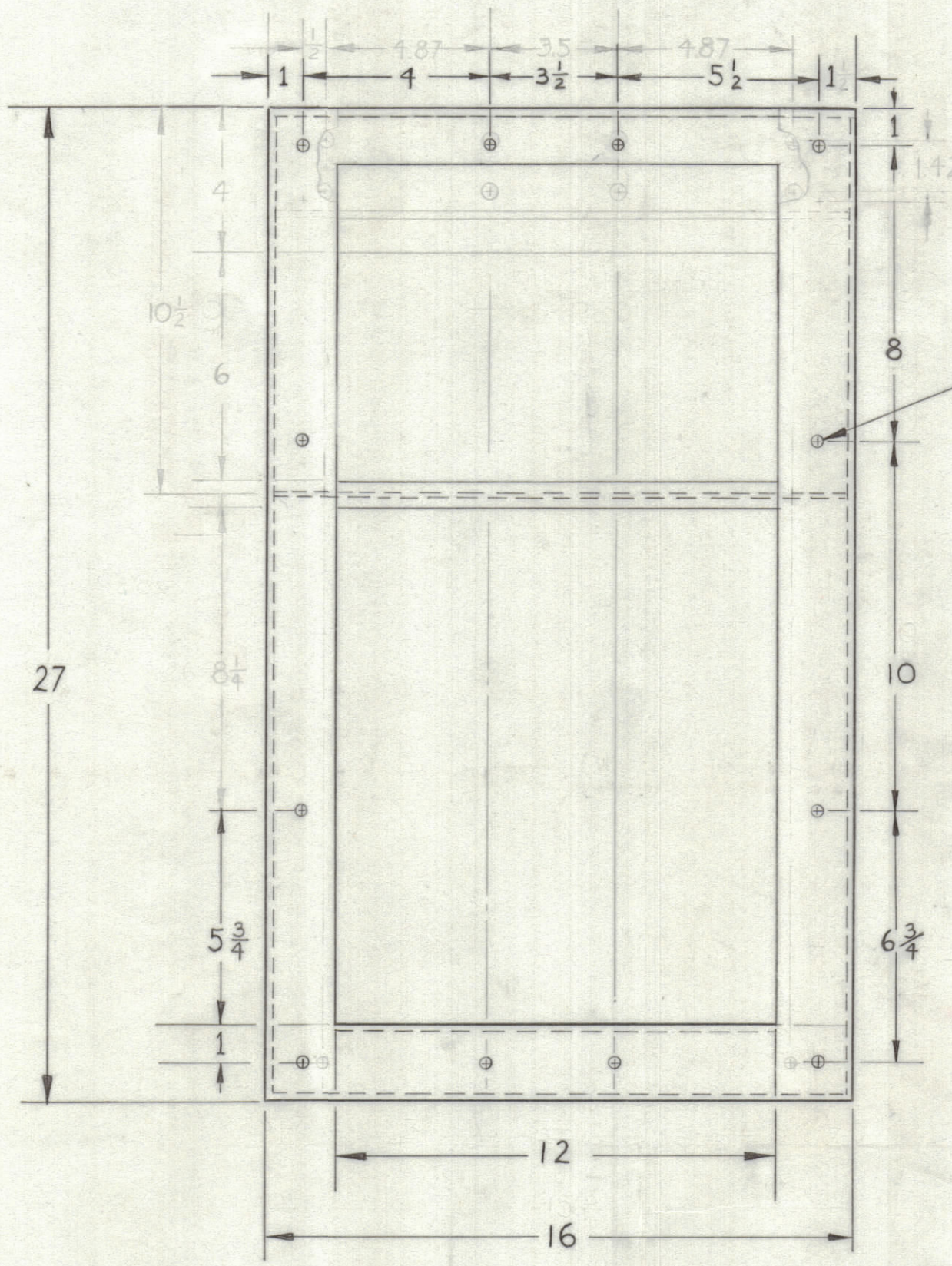


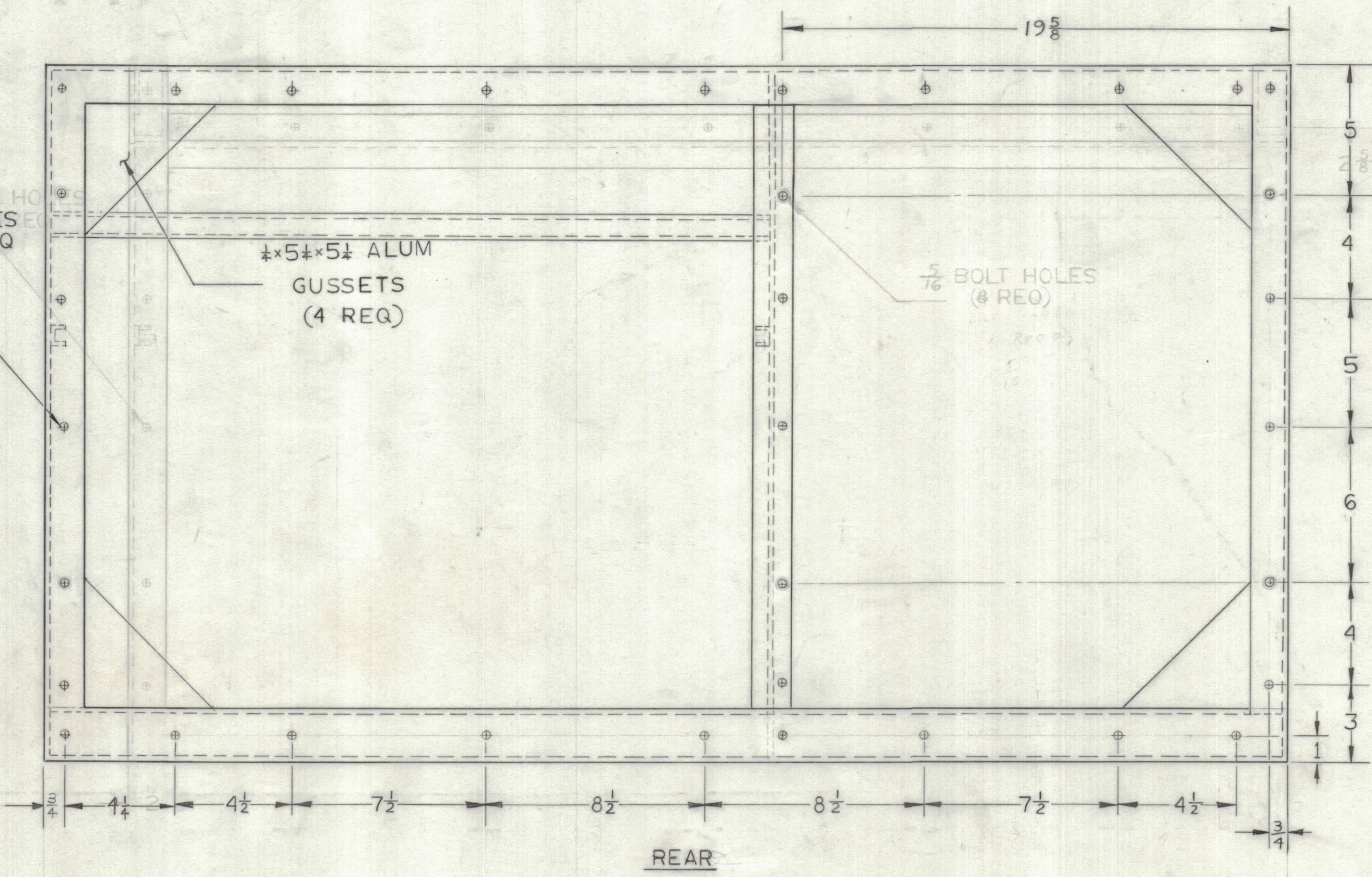
ZONE		LTR		DESCRIPTION		REVISIONS		DATE	E.M.N.NO	DRAFT	CHKD	APPD



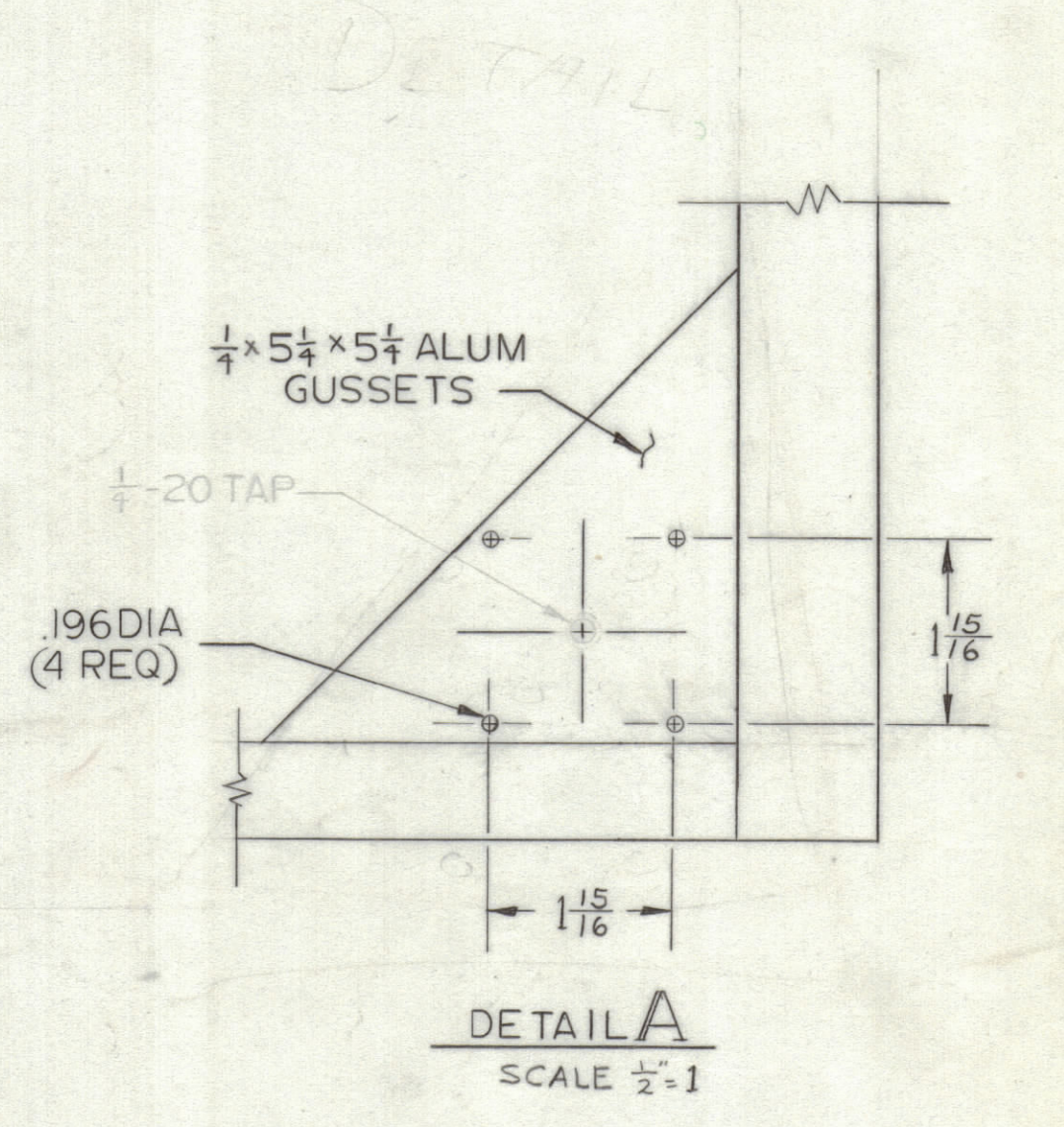
TOP



L.H. SIDE



REAR



- NOTE:
1. WELD AND REMOVE ALL BURRS FROM JOINTS.
  2. ZINC CHROMATE PER MIL-R-8585 A
  3. FINISH: TMC S115 ENAMEL

QTY. REQ.	ITEM	PART NO.	DESCRIPTION	SYMBOL
LIST OF MATERIAL				
FINAL APPROVAL		DATE	<b>THE TECHNICAL MATERIEL CORP.</b> MAMARONECK, NEW YORK  <b>PROJECTOR BASE</b>	
MECH. DES.		DATE		
ELECT. DES.		DATE		
CHECKED		DATE		
DRAWN		DATE	SIZE CODE IDENT. NO. DWG NO. ISSUE D 82679 MS 8064 $\emptyset$	
MATERIAL		SEE MS 8063		
FINISH		SEE NOTE		
SCALE		1/4" = 1"		
SHEET		2 OF 2		

QTY / UNIT	MODEL USED ON	ASSY NO.
APPLICATION		
CODE		
NOTICE TO PERSONS RECEIVING THIS DRAWING THE TECHNICAL MATERIEL CORPORATION claims proprietary right in the material disclosed hereon. This drawing is issued in confidence for engineering information only and may not be reproduced or used to manufacture anything shown hereon without permission from THE TECHNICAL MATERIEL CORPORATION to the user. This drawing is loaned for mutual assistance and is subject to recall at any time.		