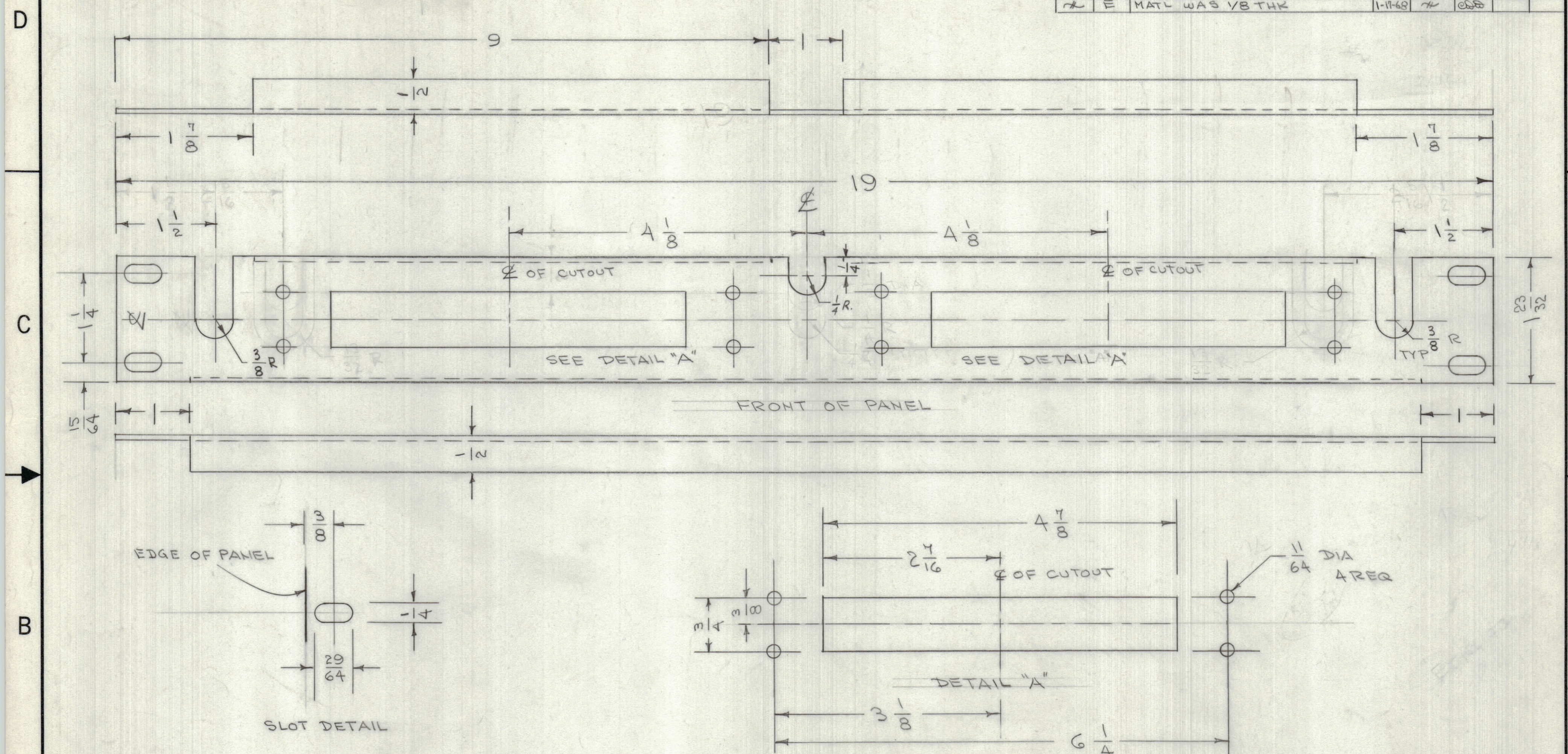


REVISIONS						
ZONE	LTR	DESCRIPTION	DATE	E.M.N.NO	DRAFT	CHKD APPD
74	A	SLOT SIZE CHANGED	11-11-67	74	ESD	
74	B	SLOT POS. CHGD, CUTOUT ADDED	12-8-67	74	ESD	
74	C	SLOT SIZE CHANGED	12-18-67	74	ESD	
74	D	CENTER SLOT CHANGED	12-28-67	74	ESD	
74	E	MATL WAS 1/8 THK	1-11-68	74	ESD	



NOTE:
 MS8052-1 DETAIL "A" LEFT SIDE OF PANEL ONLY
 -2 " " "A" RIGHT " " " " "
 -3 " " "A" BOTH SIDES " " " " "

USED ON
 AX8004-1
 -2
 -3

QTY. REQ.	ITEM	PART NO.	DESCRIPTION	SYMBOL
3	1	EY102-23	GROMMET	

LIST OF MATERIAL

THE TECHNICAL MATERIEL CORP.
 MAMARONECK, NEW YORK

FRONT PANEL
 PA210 INPUT CONTROL

SIZE	CODE IDENT. NO.	DWG NO.	ISSUE
C	82679	MS8052	E

SCALE SHEET OF

UNLESS OTHERWISE SPECIFIED DIMENSIONS ARE IN INCHES AND INCLUDE CHEMICALLY APPLIED OR PLATED FINISHES	FINAL APPROVAL <i>SPM</i>	DATE 11-16-67
TOLERANCES ON	MECH. DES.	DATE
DECIMALS .X ± .05	ELECT. DES. <i>de di Fato</i>	DATE 11-16-67
FRACTIONS ± 1/64	CHECKED <i>G ORLANDI</i>	DATE 11-16-67
ANGLES ± 0° -30'	DRAWN <i>C.D. DEAN</i>	DATE 11-10-67
MATERIAL .064 THK 5052 H32 ALUMINUM	FRONT & EDGES ONLY	
FINISH S404 IRIDITE S114 PRIMER S115 ENAMEL		

1	AX8004	
QTY / UNIT	MODEL USED ON	ASS'Y NO.
APPLICATION		
CODE		
NOTICE TO PERSONS RECEIVING THIS DRAWING		
THE TECHNICAL MATERIEL CORPORATION claims proprietary right in the material disclosed hereon. This drawing is issued in confidence for engineering information only and may not be reproduced or used to manufacture anything shown hereon without permission from THE TECHNICAL MATERIEL CORPORATION to the user. This drawing is loaned for mutual assistance and is subject to recall at any time.		