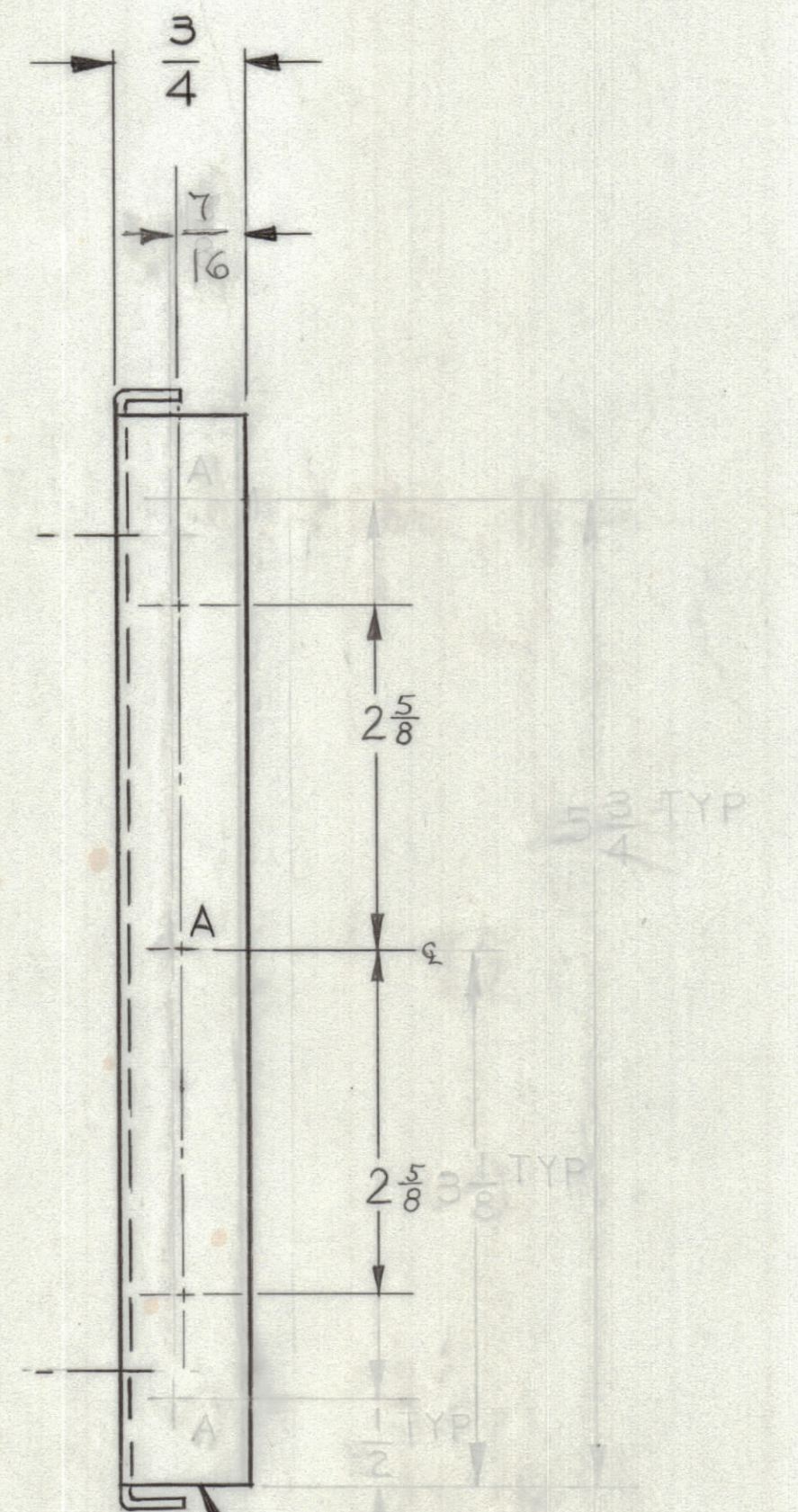
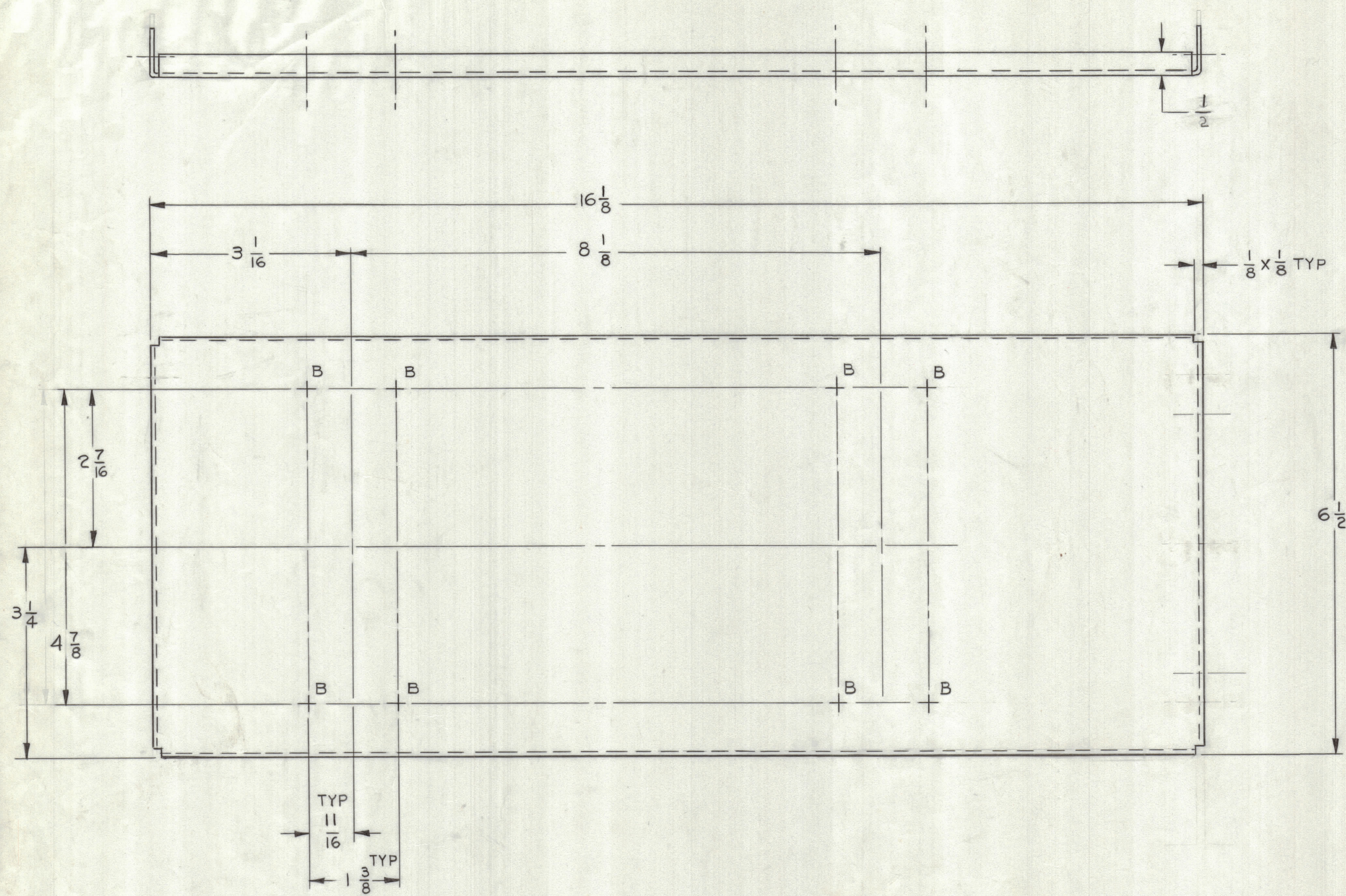


REVISIONS						
ZONE	LTR	DESCRIPTION	DATE	E.M.N.NO	DRAFT	CHKD APPD



OPPOSITE SIDE IDENTICAL

- UNLESS OTHERWISE SPECIFIED:
1. USE MATERIAL THICKNESS FOR MAXIMUM RADIUS ON ALL BENDS
 2. ALL ANGULAR BENDS 90 DEGREES
 3. REMOVE ALL BURRS AND SHARP EDGES
 4. MOUNT INSERTS AFTER FINISHING

A #16 DRILL — 6 REQ
 B #7 DRILL — 8 REQ

3	PDP-1	A8008
QTY / UNIT	MODEL USED ON	ASS'Y NO.
APPLICATION		
CODE		
NOTICE TO PERSONS RECEIVING THIS DRAWING		
THE TECHNICAL MATERIEL CORPORATION claims proprietary right in the material disclosed hereon. This drawing is issued in confidence for engineering information only and may not be reproduced or used to manufacture anything shown hereon without permission from THE TECHNICAL MATERIEL CORPORATION to the user. This drawing is loaned for mutual assistance and is subject to recall at any time.		

UNLESS OTHERWISE SPECIFIED DIMENSIONS ARE IN INCHES AND INCLUDE CHEMICALLY APPLIED OR PLATED FINISHES	
TOLERANCES ON	
DECIMALS .X ± .05 .XX ± .01 .XXX ± .005	FRACTIONS ± 1/64 ANGLES ± 0' -30'
FINAL APPROVAL <i>Am</i>	DATE 11/16/67
MECH. DES. L. NOTARANGELO	DATE 11/16/67
ELECT. DES.	DATE
CHECKED G. ORLANDI	DATE 11-21-67
DRAWN <i>Amiska</i>	DATE 9-20-67
MATERIAL .064 THK ALUMINUM 5052 H32	
FINISH S404 YEL IRIDITE	

QTY. REQ.	ITEM	PART NO.	DESCRIPTION	SYMBOL
LIST OF MATERIAL				
THE TECHNICAL MATERIEL CORP. MAMARONECK, NEW YORK				
LINE CIRCUIT BREAKER MTG PLATE PDP-1 UNIT-27				
SIZE	CODE IDENT. NO.	DWG NO.	ISSUE	
D	82679	4MS8018 17	Ø	
SCALE	SHEET			OF