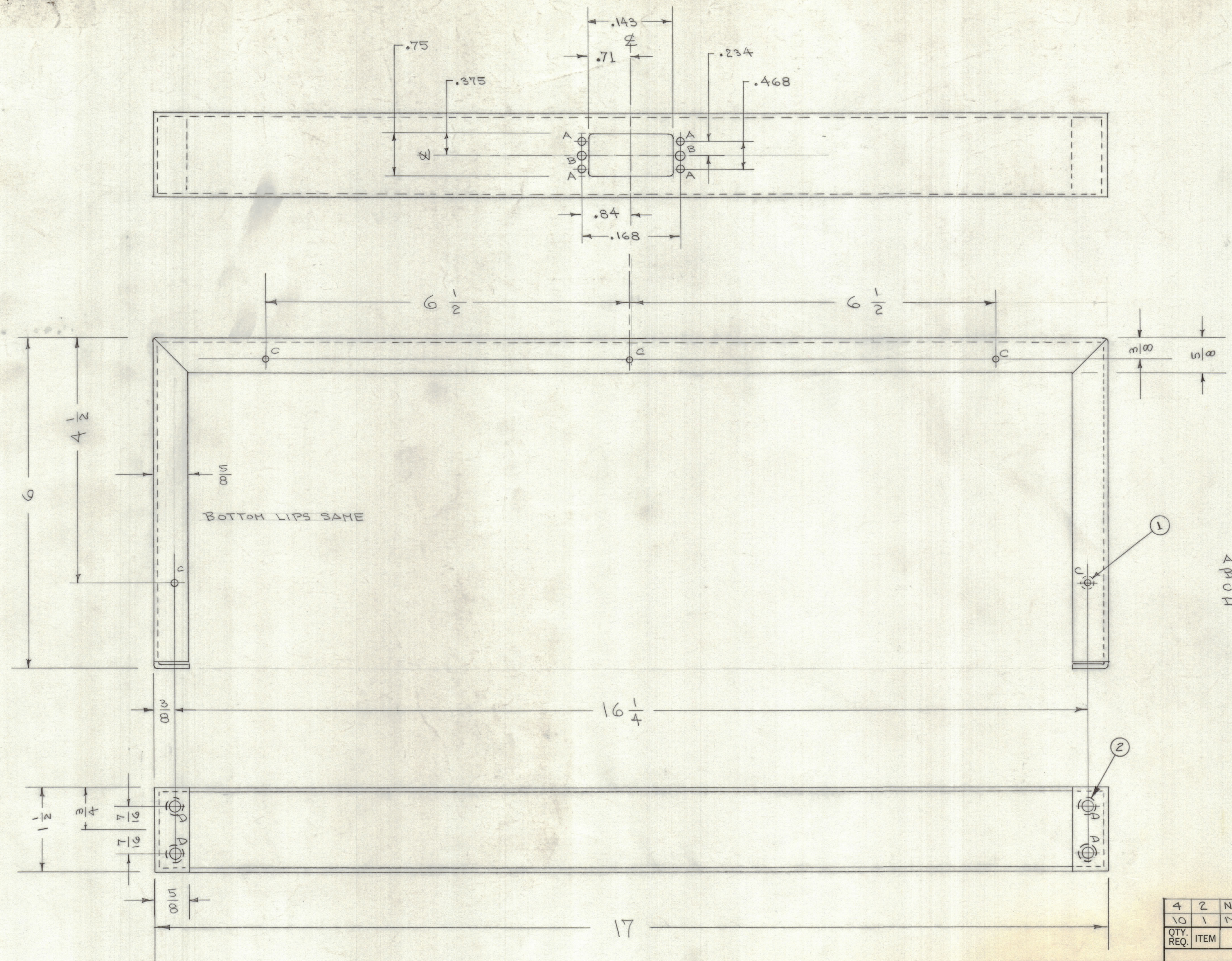


ZONE		LTR		DESCRIPTION		REVISIONS		DATE	E.M.N.NO	DRAFT	CHKD	APPD



LETTER	DIAMETER	QUANTITY
A HOLES	.120 DIA	4 REQ'D
B "	.140 "	2 "
C "	.161 MIN-.164 MAX	10 REQ'D
D "	.191-.194 DIA	4 "

- UNLESS OTHERWISE SPECIFIED:
1. USE MATERIAL THICKNESS FOR MAXIMUM RADIUS ON ALL BENDS
  2. ALL ANGULAR BENDS 90 DEGREES
  3. REMOVE ALL BURRS AND SHARP EDGES
  4. MOUNT INSERTS AFTER FINISHING

QTY. REQ.	ITEM	PART NO.	DESCRIPTION	SYMBOL
4	2	NT129-0632-4	NUT, ROUND, SWAGE TYPE	
10	1	NT129-440-4	NUT, ROUND, SWAGE TYPE	

LIST OF MATERIAL

THE TECHNICAL MATERIEL CORP.  
MAMARONECK, NEW YORK

WRAPAROUND  
ATPC-1

QTY / UNIT	MODEL USED ON	ASS'Y NO.
1	ATPC-1	
APPLICATION		
CODE		

UNLESS OTHERWISE SPECIFIED DIMENSIONS ARE IN INCHES AND INCLUDE CHEMICALLY APPLIED OR PLATED FINISHES	
DECIMALS	FRACTIONS
.X ± .05	± 1/64
.XX ± .01	ANGLES ± 0° -30'
.XXX ± .005	

FINAL APPROVAL	DATE	MECH. DES.	DATE	ELECT. DES.	DATE	CHECKED	DATE	DRAWN	DATE
<i>[Signature]</i>	1-31-68	<i>[Signature]</i>	1-30-68	<i>[Signature]</i>		<i>[Signature]</i>		C.D. DEAN	11-21-67

NOTICE TO PERSONS RECEIVING THIS DRAWING

THE TECHNICAL MATERIEL CORPORATION claims proprietary right in the material disclosed herein. This drawing is issued in confidence for engineering information only and may not be reproduced or used to manufacture anything shown hereon without permission from THE TECHNICAL MATERIEL CORPORATION to the user. This drawing is loaned for mutual assistance and is subject to recall at any time.

MATERIAL	FINISH
.064 THK 5052 H32 ALUMINUM	S404 IRIDITE

SIZE	CODE IDENT. NO.	DWG NO.	ISSUE
D	82679	MS8010	φ

SCALE SHEET OF

MS 8010