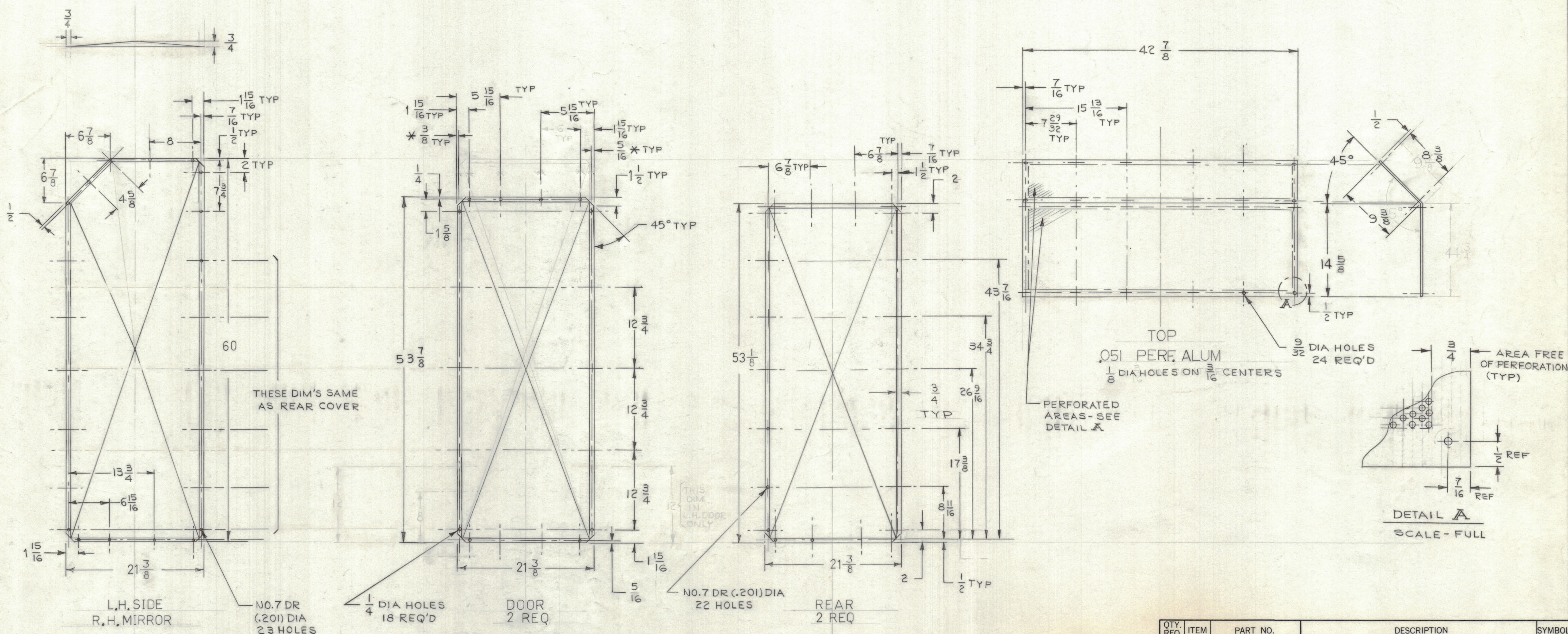


ZONE		LTR		DESCRIPTION	REVISIONS		DATE	E.M.N.NO	DRAFT	CHKD	APPD



THESE DIM'S SAME AS REAR COVER

NO.7 DR (.201) DIA 23 HOLES

1/4 DIA HOLES 18 REQ'D

DOOR 2 REQ

NO.7 DR (.201) DIA 22 HOLES

REAR 2 REQ

TOP  
.051 PERFOR. ALUM  
1/8 DIA HOLES ON 3/16 CENTERS

PERFORATED AREAS - SEE DETAIL A

AREA FREE OF PERFORATION (TYP)

DETAIL A  
SCALE - FULL

NOTE: S404 IRIDITE  
S114 PRIMER  
S521 GRAYTEXTURE } FRONT & EDGES

- FOR R.H. DOOR USE DIM'S SHOWN.
- FOR L.H. DOOR, DIM'S INDICATED BY (\*) ASTERISK ARE REVERSED.

AS REQ	TER-20K-50	
QTY / UNIT	MODEL USED ON	ASS'Y NO.
APPLICATION		
CODE		

NOTICE TO PERSONS RECEIVING THIS DRAWING  
THE TECHNICAL MATERIEL CORPORATION claims proprietary right in the material disclosed hereon. This drawing is issued in confidence for engineering information only and may not be reproduced or used to manufacture anything shown hereon without permission from THE TECHNICAL MATERIEL CORPORATION to the user. This drawing is loaned for mutual assistance and is subject to recall at any time.

UNLESS OTHERWISE SPECIFIED DIMENSIONS ARE IN INCHES AND INCLUDE CHEMICALLY APPLIED OR PLATED FINISHES	
TOLERANCES ON	
DECIMALS	FRACTIONS
.X ± .05	± 1/64
.XX ± .01	ANGLES
.XXX ± .005	± 0° - 30'

MATERIAL  
040 ALUM  
FINISH  
SEE NOTE

QTY. REQ.	ITEM	PART NO.	DESCRIPTION	SYMBOL
LIST OF MATERIAL				
FINAL APPROVAL <i>[Signature]</i> DATE 4-20-68				
MECH. DES. <i>[Signature]</i> DATE 10-20-67				
ELECT. DES. DATE				
CHECKED <i>[Signature]</i> DATE 4				
DRAWN L. NOTARANGELO DATE 10-20-67				
THE TECHNICAL MATERIEL CORP. MAMARONECK, NEW YORK				
COVERS UNIT 10				
SIZE	CODE	IDENT. NO.	DWG NO.	ISSUE
D	82679		MS 8008	0
SCALE 1/8				SHEET OF