

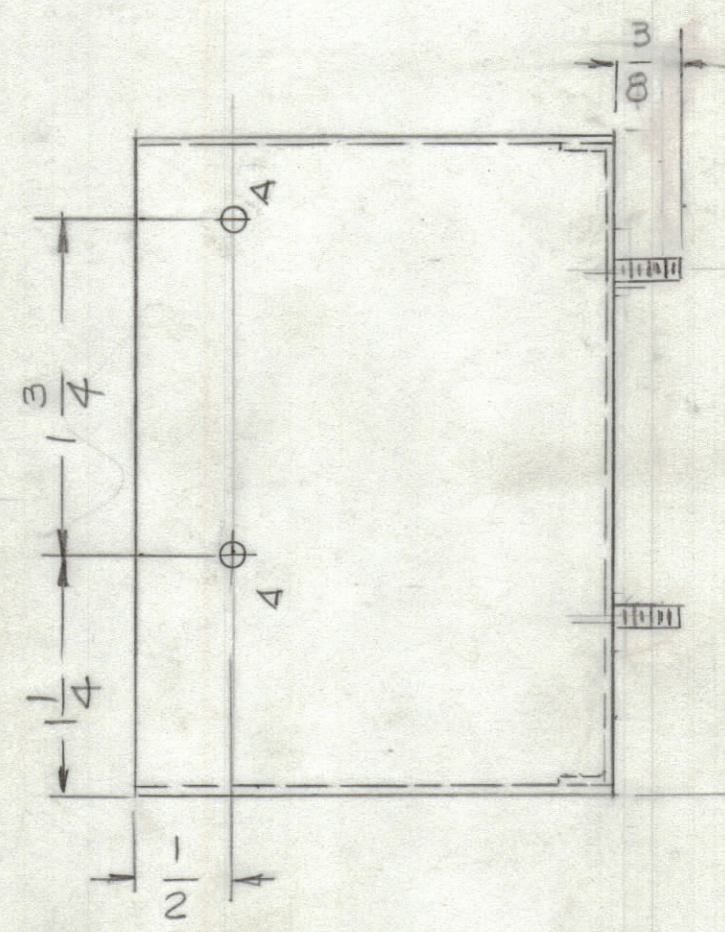
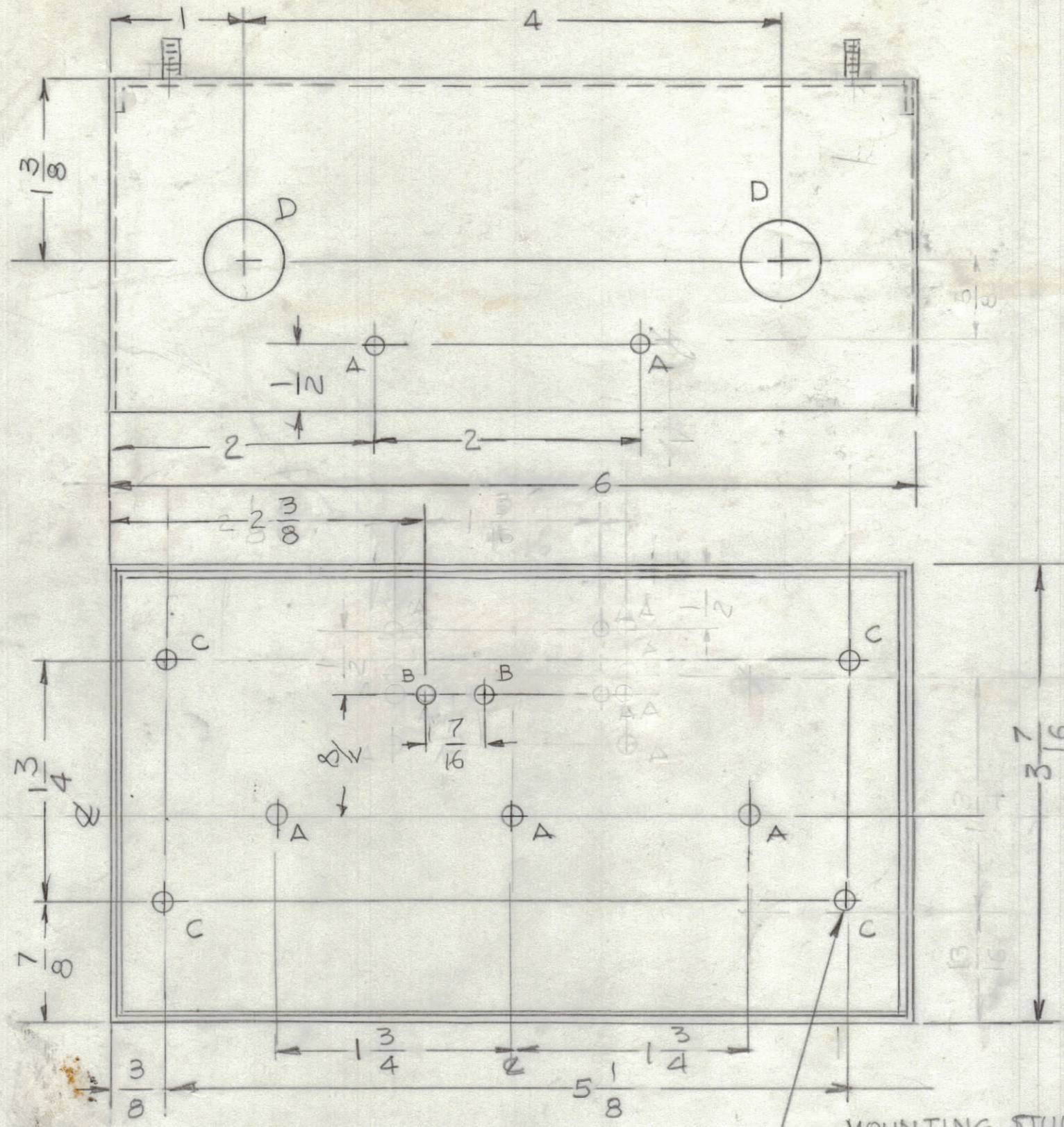
4

3

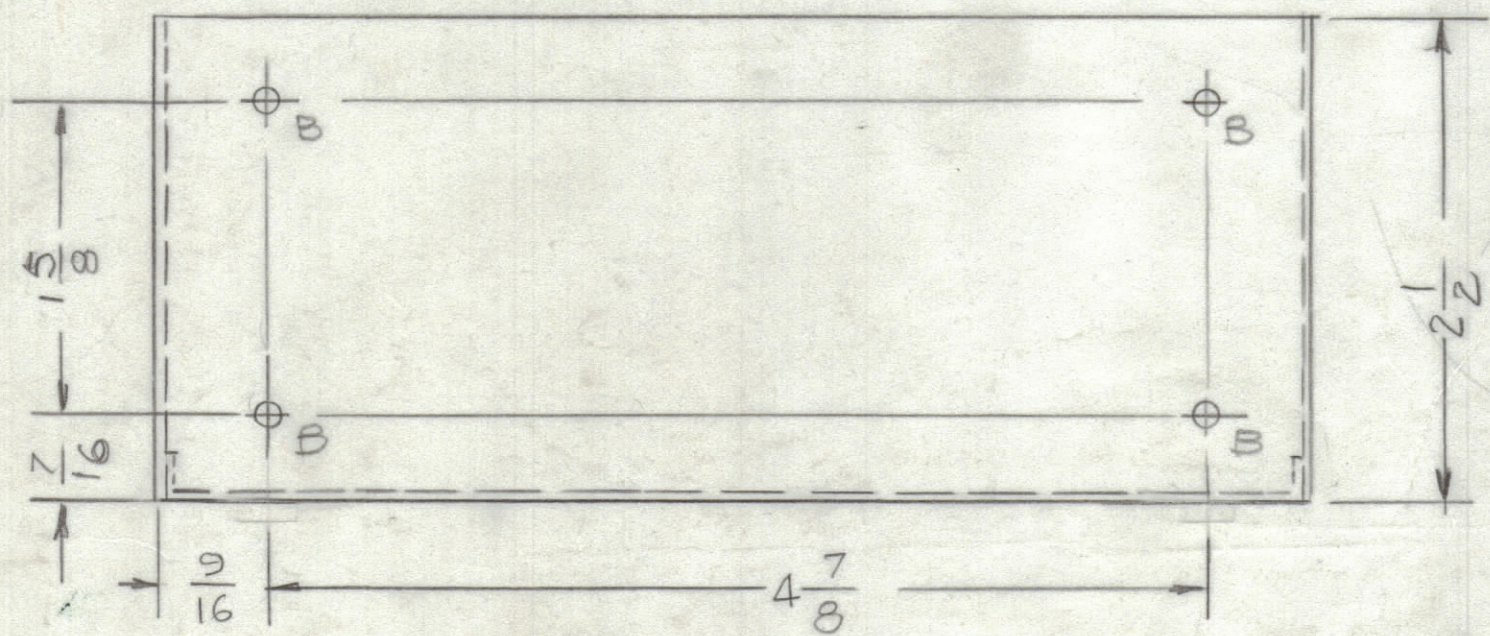
2

1

REVISIONS						
ZONE	LTR	DESCRIPTION	DATE	E.M.N.NO	DRAFT	CHKD APPD
	A	4 "A" HOLES DELETED - TWO "B" HOLES ADDED	4-28-92		G.D.L.	



HOLES	REQ'D
A - 9/64 DIA	7
B - 11/64 DIA	6
C - 13/64 DIA	4
D - 5/8 DIA	2



UNLESS OTHERWISE SPECIFIED DIMENSIONS ARE IN INCHES AND INCLUDE CHEMICALLY APPLIED OR PLATED FINISHES

TOLERANCES ON
 DECIMALS .X ± .05
 .XX ± .01
 .XXX ± .005
 FRACTIONS ± 1/64
 ANGLES ± 0° -30'

QTY. REQ.	ITEM	PART NO.	DESCRIPTION	SYMBOL
LIST OF MATERIAL				
THE TECHNICAL MATERIEL CORP. MAMARONECK, NEW YORK				
MACHINING BX 238 AX 5272 / AX 5273				
FINAL APPROVAL <i>G.D.L.</i>		DATE 1/2/93		
MECH. DES.		DATE		
ELECT. DES.		DATE		
CHECKED		DATE		
DRAWN G.D.L.		DATE 2-4-92		
SIZE C	CODE IDENT. NO. 82679	DWG NO. MS 7260	ISSUE A	
SCALE			SHEET OF	

QTY / UNIT	MODEL USED ON	ASS'Y NO.
APPLICATION		
CODE		
NOTICE TO PERSONS RECEIVING THIS DRAWING THE TECHNICAL MATERIEL CORPORATION claims proprietary right in the material disclosed hereon. This drawing is issued in confidence for engineering information only and may not be reproduced or used to manufacture anything shown hereon without permission from THE TECHNICAL MATERIEL CORPORATION to the user. This drawing is loaned for mutual assistance and is subject to recall at any time.		

4

3

2

1

MS 7260 A B