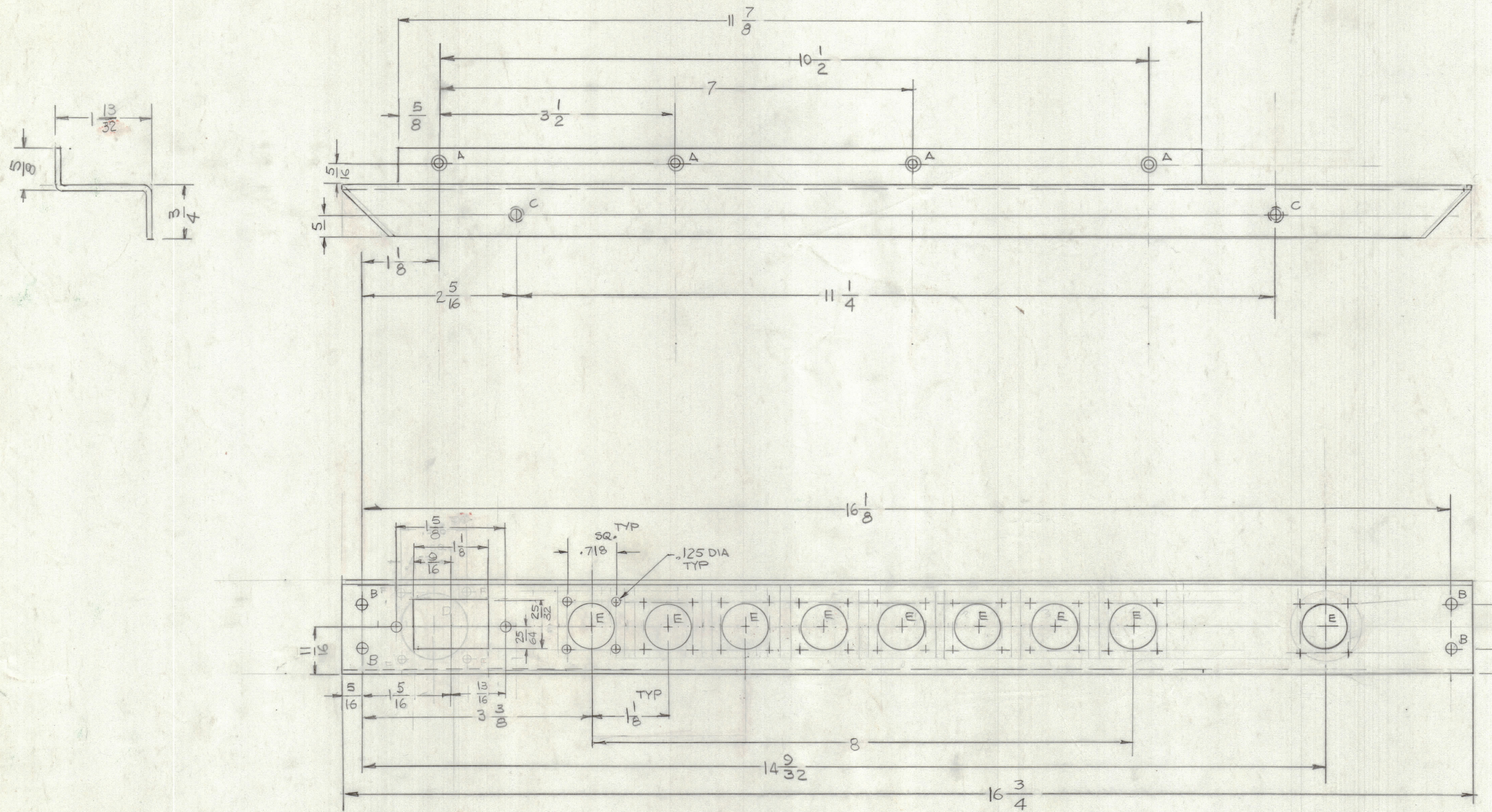


REVISIONS							
E.M.N.O.	DRAFT	CHKD	ZONE	LTR	DESCRIPTION	DATE	APPROVED
	GDL				ORIGINAL RELEASE FOR PRODUCTION	9-20-91	
	GDL			A	PLUG.MTG ON LEFT SIDE ADDED	7-8-93	<i>RB</i>



HOLES

A - .161-.164 DIA	4 REQ'D
B - .11/64 DIA	4 REQ'D
C - .191-.194 DIA	2 REQ'D
D - .61/64 DIA	
E - .11/16 DIA	9 REQ'D
F - .9/64 DIA	4 REQ'D

QTY. REQ.	ITEM	PART NO.	DESCRIPTION	SYMBOL
2	2	NT129-632-4	NUT, ROUND	C
4	1	NT129-0440-4	NUT, ROUND	A

REF: LD3175

QTY / UNIT	MODEL USED ON	ASSY NO.
1	AMC8-5	
APPLICATION		
CODE		

NOTICE TO PERSONS RECEIVING THIS DRAWING
 THE TECHNICAL MATERIEL CORPORATION claims proprietary right in the material disclosed herein. This drawing is issued in confidence for engineering information only and may not be reproduced or used to manufacture anything shown hereon without permission from THE TECHNICAL MATERIEL CORPORATION to the user. This drawing is loaned for mutual assistance and is subject to recall at any time.

UNLESS OTHERWISE SPECIFIED DIMENSIONS ARE IN INCHES AND INCLUDE CHEMICALLY APPLIED OR PLATED FINISHES	FINAL APPROVAL <i>RB</i>	DATE 9/22/91
TOLERANCES ON DECIMALS .X ± .05 .XX ± .01 .XXX ± .005	MECH. DES.	DATE
FRACTIONS ± 1/64 ANGLES ± 0° -30'	ELECT. DES.	DATE
	CHECKED	DATE
	DRAWN GDL	DATE 9/20/91
MATERIAL .063THK ALUM. ALLOY 5052-H32	THE TECHNICAL MATERIEL CORP. MAMARONECK, NEW YORK	
FINISH 404 YEL. IRIZIDE	PANEL, REAR	
	SIZE D	CODE IDENT NO. 82679
		DWG NO. MS7258
	SCALE 1:1	ISSUE A

SIZE	CODE	IDENT NO.	DWG NO.	ISSUE
D	82679		MS7258	A

SHEET OF