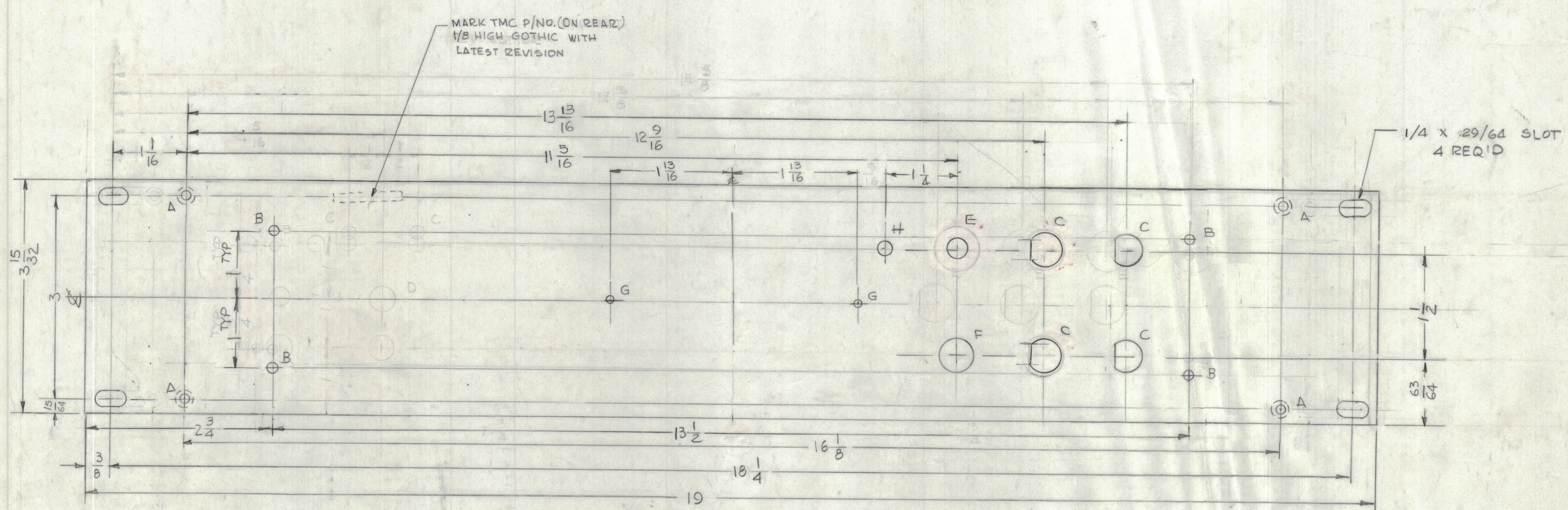
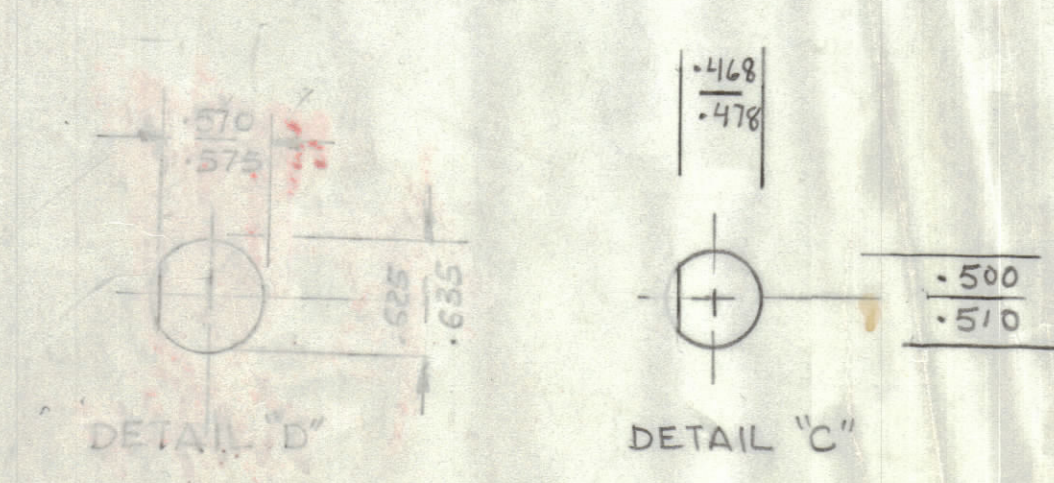


E.M.N.O	DRAFT	CHKD	ZONE	LTR	REVISIONS		
					DESCRIPTION	DATE	APPROVED
GDL					ORIGINAL RELEASE FOR PRODUCTION	3-20-91	
GDL				A	DIM. 1/16 WAS 17/16	10/29/90	
				B	D HOLES REMOVED E HOLE CHG. 25/64 PAN. THK CHANGED TO 1/8" MAT	10/29/96	



- HOLES
- A - .169 DIA C/SK 82° TO .339 DIA ON REAR 4 REQ'D
 - B - 11/64 DIA 4 REQ'D
 - C - SEE DETAIL 2 REQ'D
 - D - SEE DETAIL 2 REQ'D
 - E - 25/64 DIA 1 REQ'D
 - F - 1/2 DIA 1 REQ'D
 - G - DRILL .078 DIA (#47) 2 REQ'D
 - H - 1/4 DIA 1



MACHINING:

- LATERAL BOW PANEL MUST BE WITHIN 1/32
- MILL EDGES.
- HOLES MUST BE DRILLED
- PANEL MUST BE FREE OF ALL MACHINING MARKS GOUGES & SCRATCHES.

FINISH NOTES:

- S404 - YELLOW IRIDITE
- S114 ZINCO CHROMATE PRIMER } FINISH FRONT & EDGES ONLY
- S115 - SMOOTH GREY ENAMEL }

REF: BLANK PANEL MS 157-2

REF: LD 3171

QTY. REQ.	ITEM	PART NO.	DESCRIPTION	SYMBOL
LIST OF MATERIAL				
FINAL APPROVAL	DATE	THE TECHNICAL MATERIEL CORP. MAMARONECK, NEW YORK PANEL, FRONT		
MECH. DES.	DATE			
ELECT. DES.	DATE			
CHECKED	DATE			
DRAWN	DATE			
		SIZE CODE IDENT NO. DWG NO.		ISSUE
		D 82679 MS 7242		B
		SCALE 1:1	SHEET OF	

QTY / UNIT	MODEL USED ON	ASSY NO.
1	PAL -15	
1	PAL -16	
APPLICATION		
CODE		

NOTICE TO PERSONS RECEIVING THIS DRAWING
THE TECHNICAL MATERIEL CORPORATION claims proprietary right in the material disclosed herein. This drawing is issued in confidence for engineering information only and may not be reproduced or used to manufacture anything shown hereon without permission from THE TECHNICAL MATERIEL CORPORATION to the user. This drawing is loaned for mutual assistance and is subject to recall at any time.

UNLESS OTHERWISE SPECIFIED DIMENSIONS ARE IN INCHES AND INCLUDE CHEMICALLY APPLIED OR PLATED FINISHES

TOLERANCES ON

DECIMALS	FRACTIONS
.X ± .05	± 1/64
.XX ± .01	ANGLES
.XXX ± .005	± 0° - 30'

MATERIAL ALUM 2024-T3
FINISH SEE NOTE