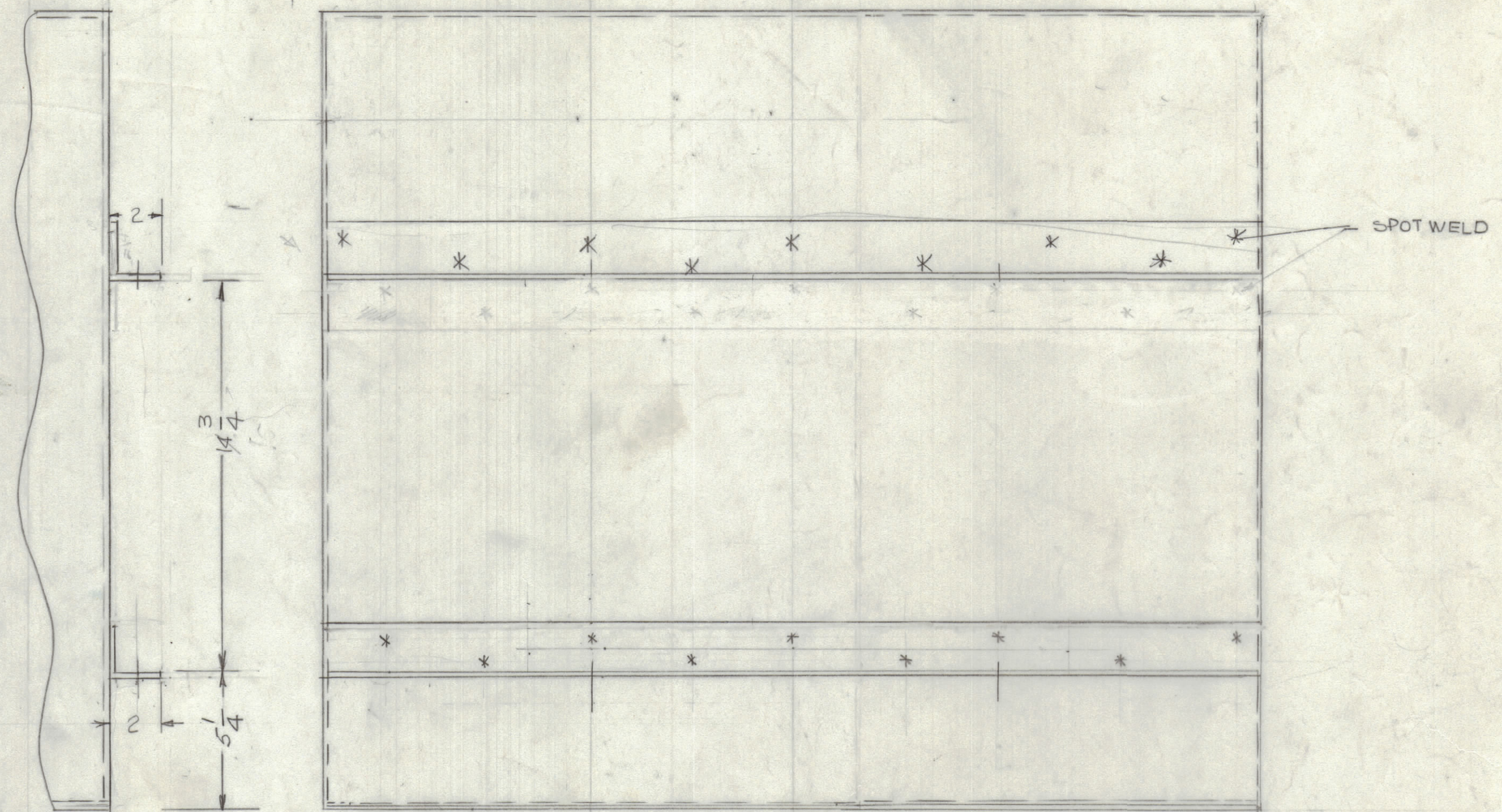
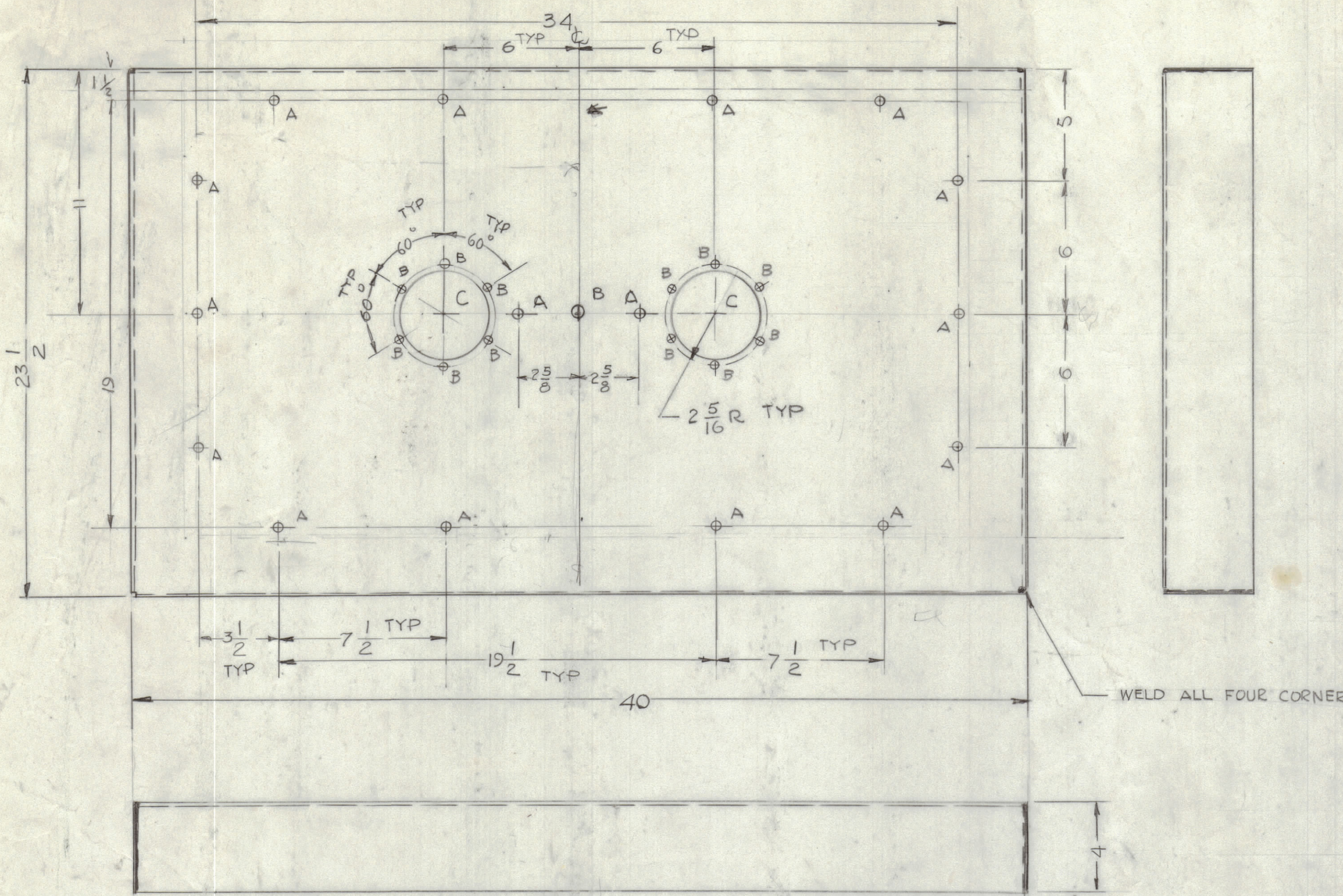


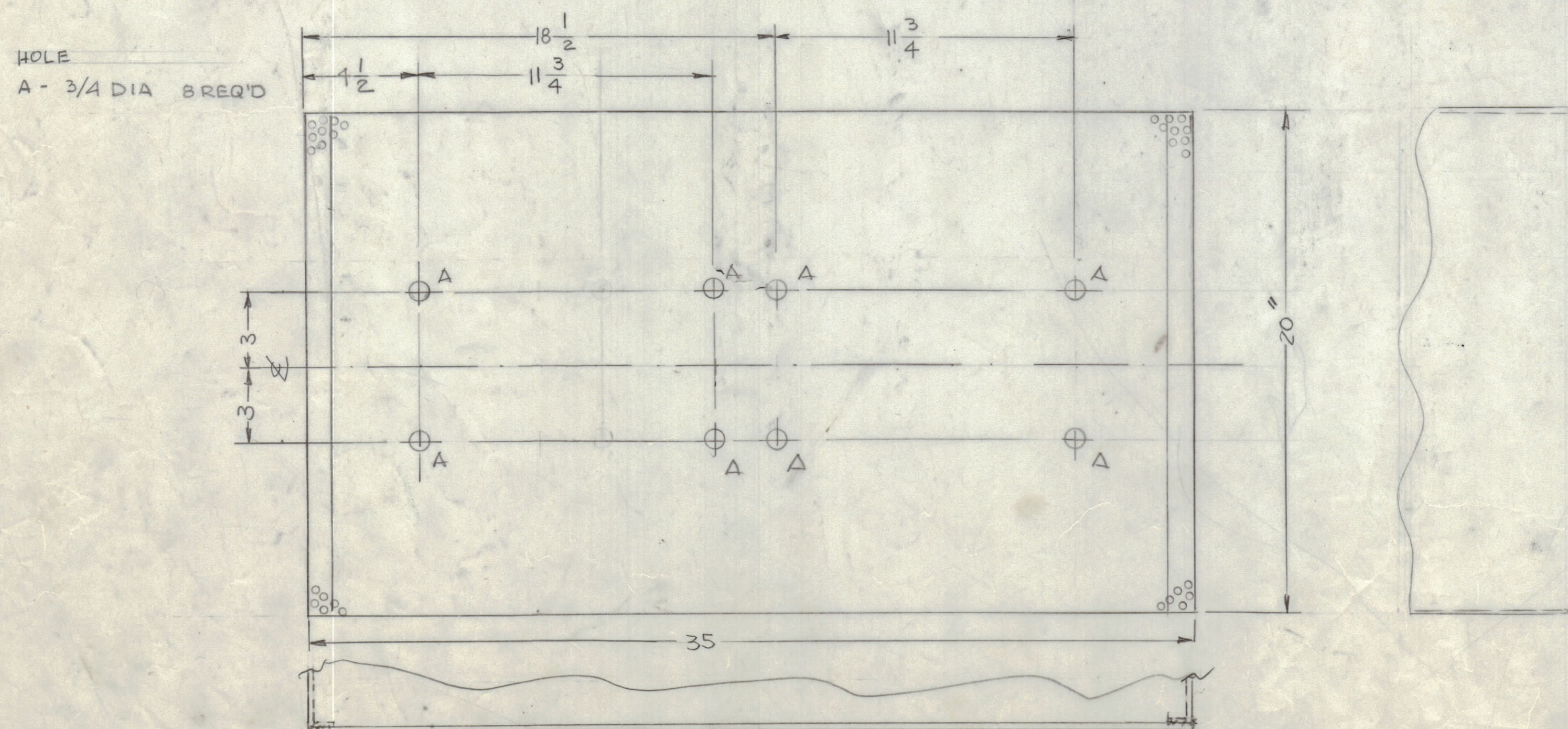
MATERIAL  
 .081 THK ALUMINIUM  
 5052-H32  
 FINISH:  
 YEL IRIDITE  
 LIGHT GREY TEXTURED

HOLES:  $1/4$   
 A -  $13/64$  DIA 10 REQ'D  
 B -  $9/32$  DIA 13 REQ'D  
 C -  $3/4$  DIA 2 REQ'D

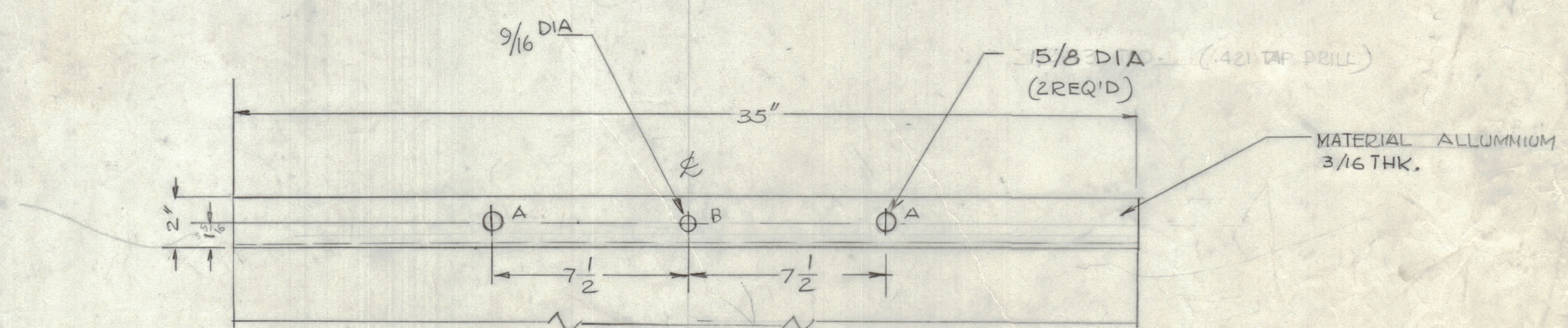
REVISIONS				
E.M. NO.	DRAFT	CHKD	ZONE	LTR
DESCRIPTION				
DATE				APPROVED



REAR VIEW



BOTTOM PERFORATE PLATE



QTY / UNIT	MODEL USED ON	ASSY NO.
APPLICATION		
CODE		

UNLESS OTHERWISE SPECIFIED  
 DIMENSIONS ARE IN INCHES  
 AND INCLUDE CHEMICALLY APPLIED  
 OR PLATED FINISHES

TOLERANCES ON  
 DECIMALS      FRACTIONS  
 .XX ± .01      = 1/64  
 .XXX ± .005    ANGLES  
                   = 0° - 30°

MATERIAL .081 THK ALY.  
 5052-H32

FINISH S404  
 YEL IRIDITE  
 LIGHT GREY TEXTURED

QTY. REQ.	ITEM	PART NO.	DESCRIPTION	SYMBOL
LIST OF MATERIAL				
FINAL APPROVAL		DATE		
MECH. DES.		DATE		
ELECT. DES.		DATE		
CHECKED		DATE		
DRAWN		DATE		
G.D.L.		5-10-89		
SIZE		CODE IDENT NO. DWG NO.		ISSUE
D		82679 MS-7206		0
SCALE 1/4		SHEET 2 OF 2		

THE TECHNICAL MATERIEL CORP.  
 MAMARONECK, NEW YORK

CASE, TER 4K/600.Ω

NOTICE TO PERSONS RECEIVING THIS DRAWING  
 THE TECHNICAL MATERIEL CORPORATION claims proprietary right in the material disclosed herein.  
 This drawing is issued in confidence for engineering information only and may not be reproduced or used  
 to manufacture anything shown hereon without permission from THE TECHNICAL MATERIEL CORPORATION  
 to the user. This drawing is loaned for mutual assistance and is subject to recall at any time.