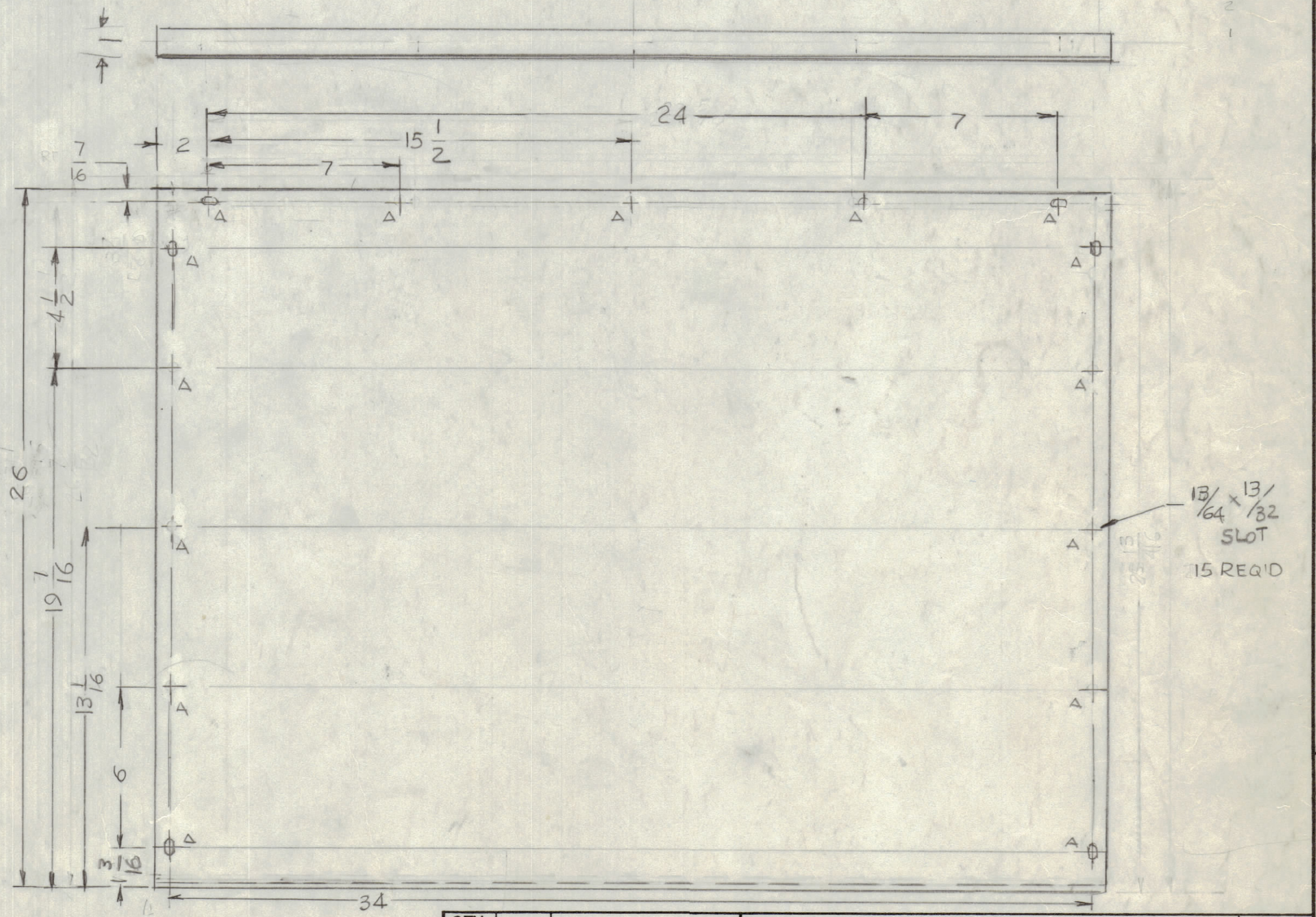
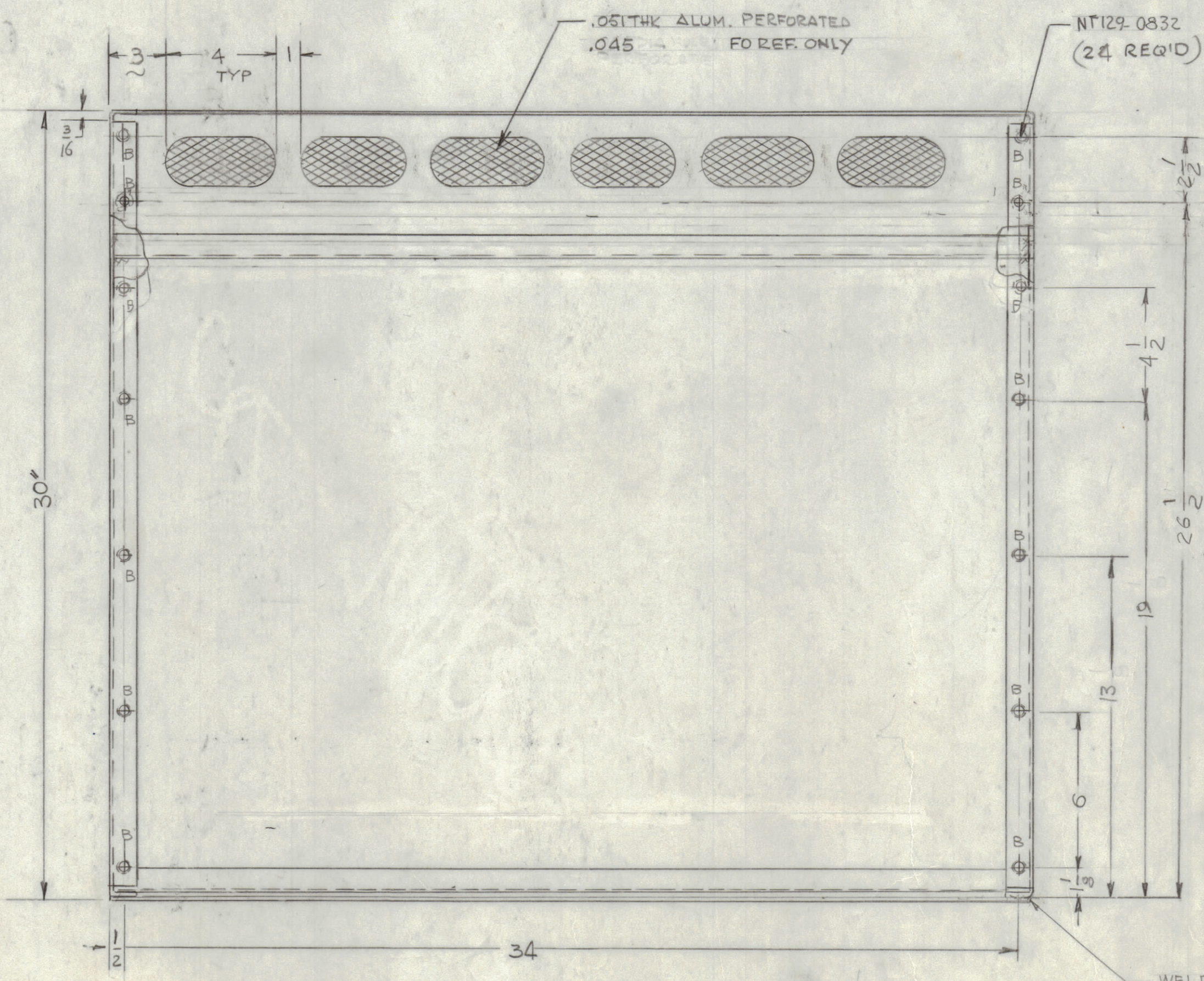
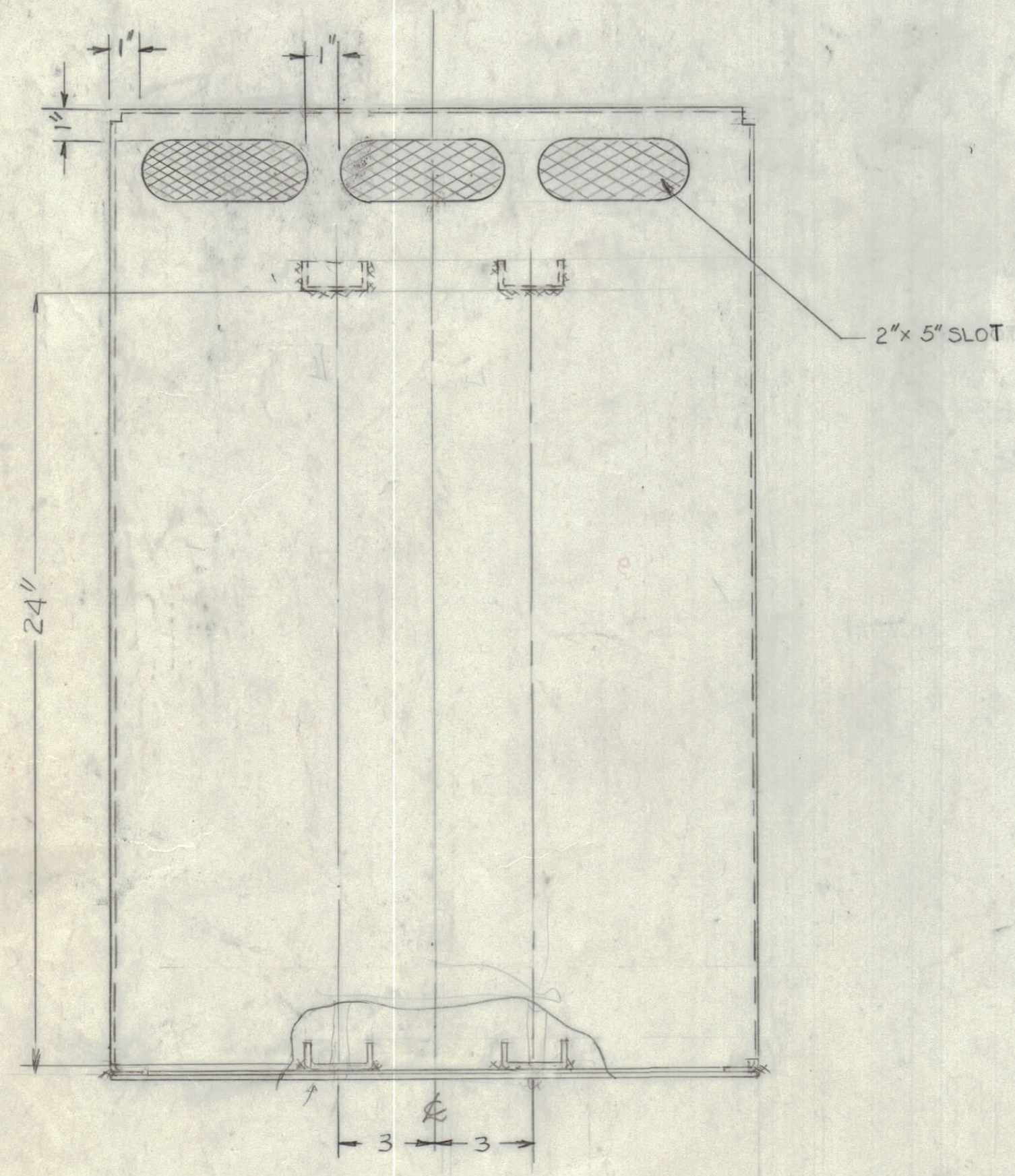
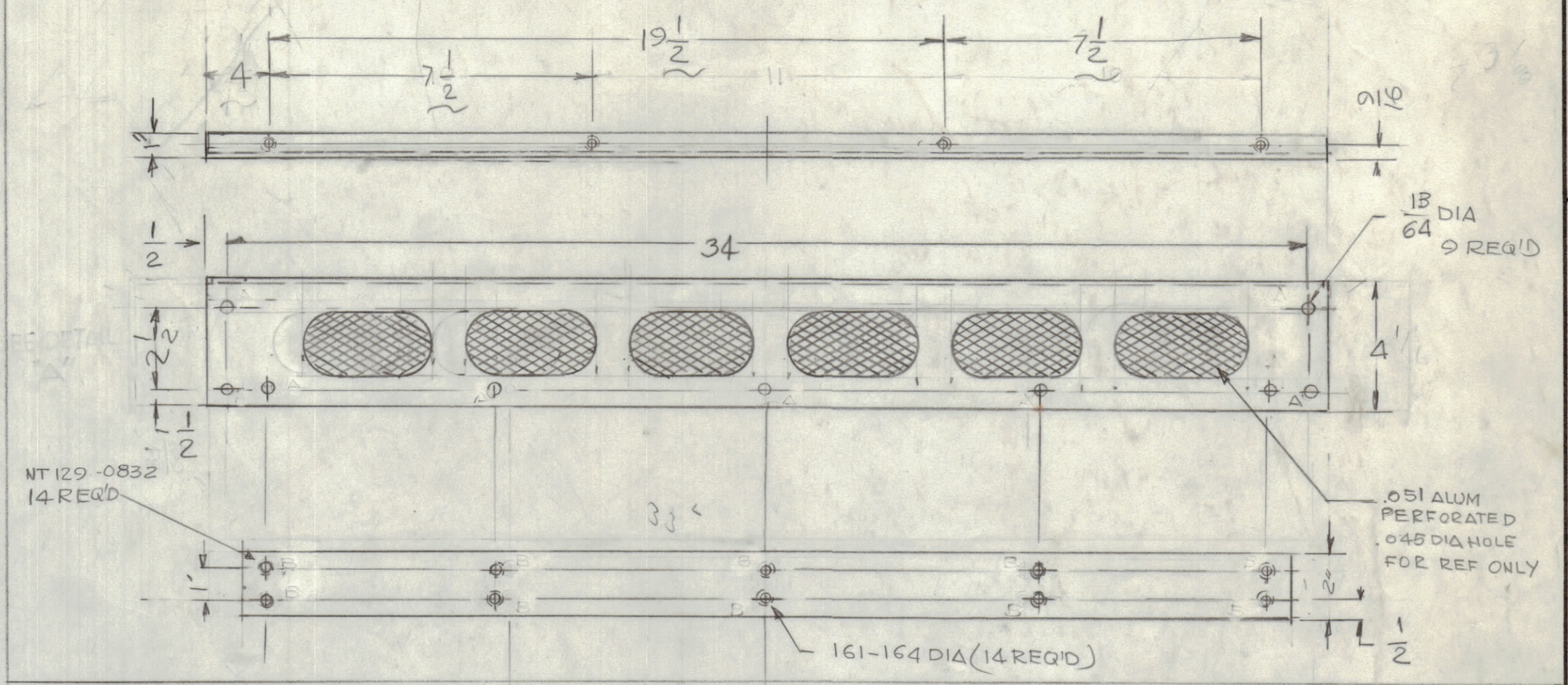
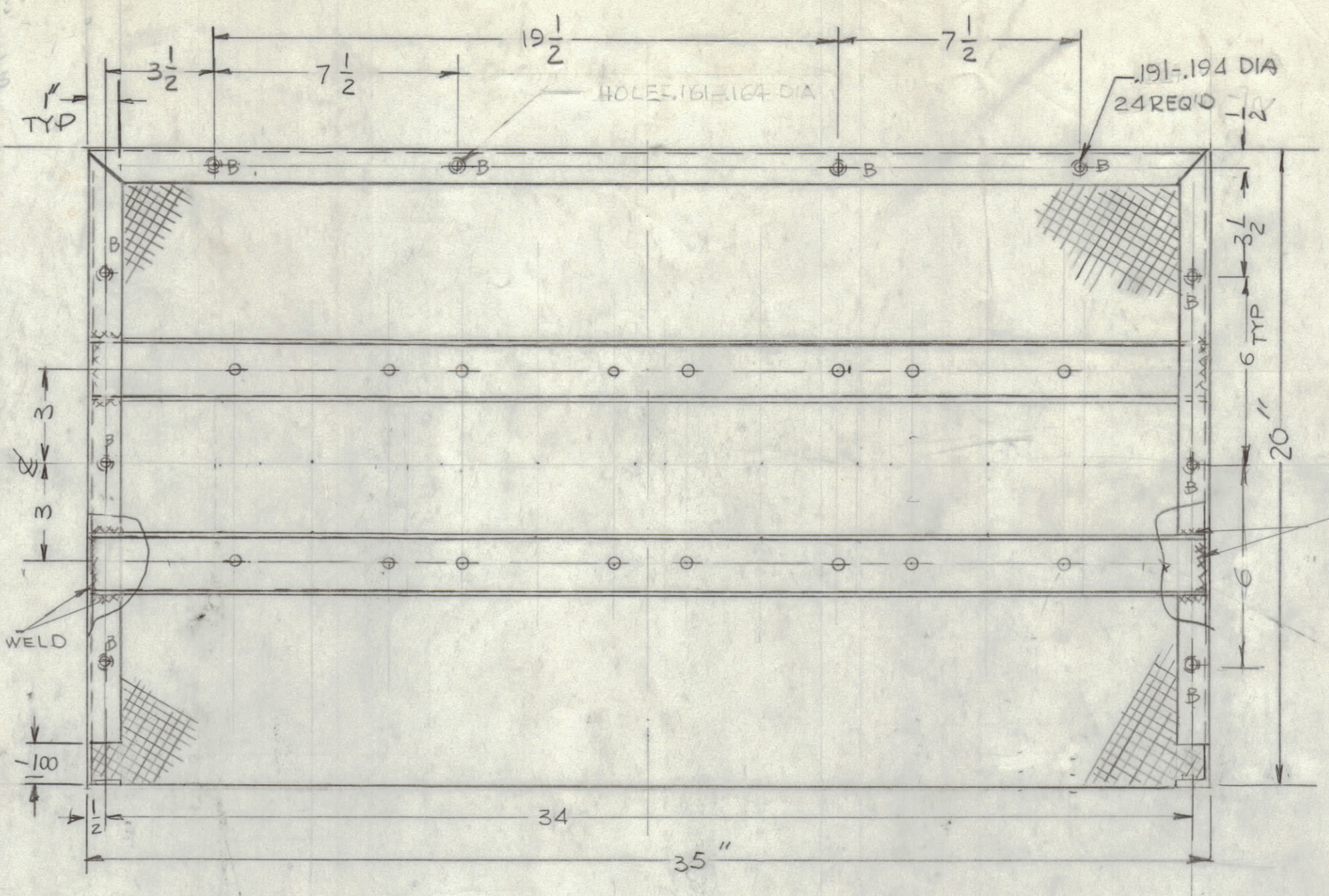
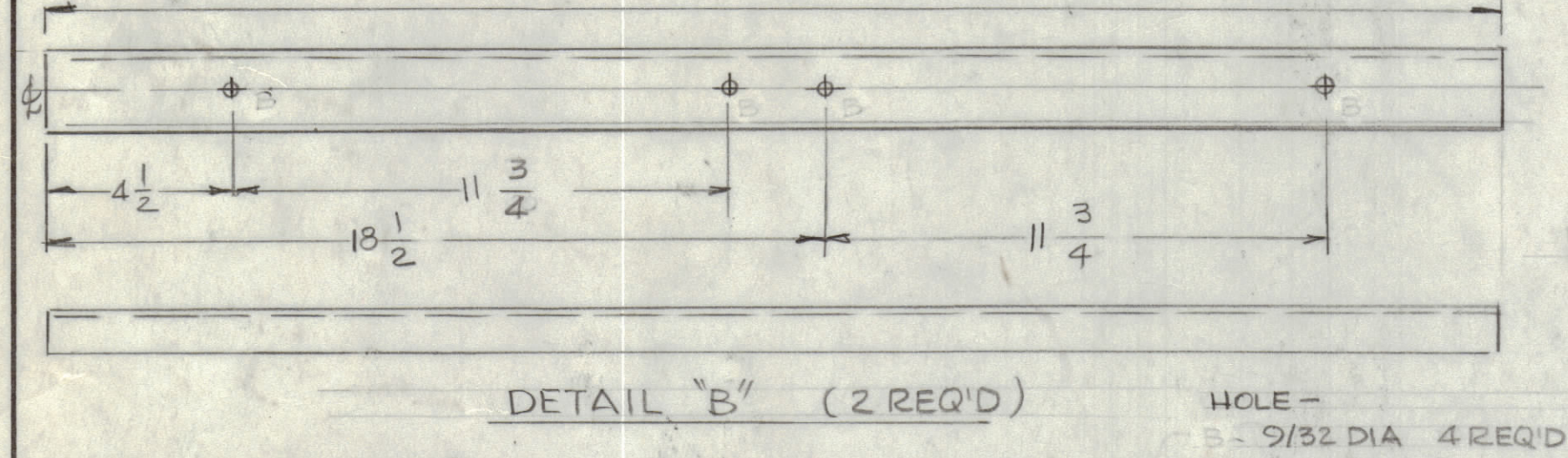
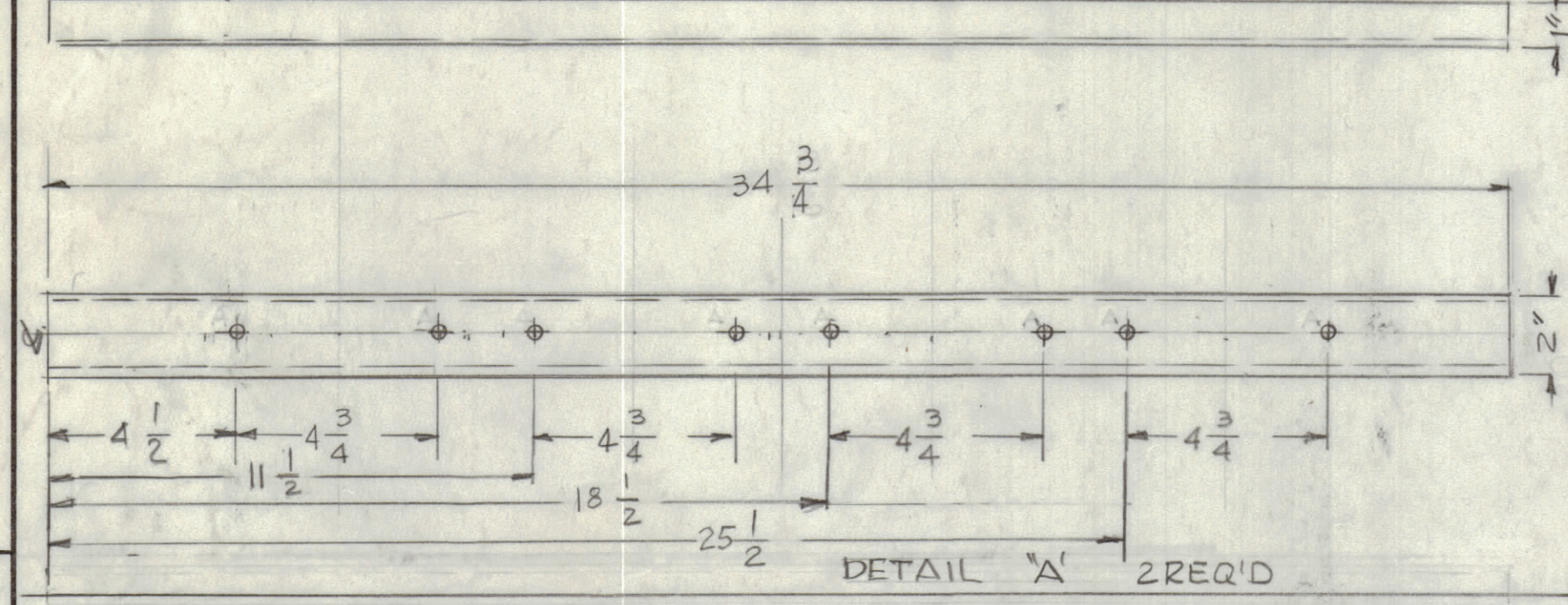


HOLES
- 9/32 DIA 8 REQ'D

ALUMINUM CHANNEL 1x2x1/8



REVISIONS				DATE	APPROVED
E.M.N.O	DRAFT	CHKD	ZONE	LTR	DESCRIPTION

QTY. REQ.	ITEM	PART NO.	DESCRIPTION	SYMBOL
-----------	------	----------	-------------	--------

FINAL APPROVAL		DATE	THE TECHNICAL MATERIEL CORP. MAMARONECK, NEW YORK
MECH. DES.		DATE	
ELECT. DES.		DATE	
CHECKED		DATE	
DRAWN		DATE	CASE, TER 4K/600 n

QTY / UNIT	MODEL USED ON	ASS'Y NO.
APPLICATION		
CODE		

TOLERANCES ON	
DECIMALS	FRACTIONS
X ± .05	± 1/64
.XX ± .01	ANGLES
.XXX ± .005	± 0° - 30'

MATERIAL 3003 ALUMINUM
5052 - H32
FINISH 5A04
VEL IRIDITE
LIGHT GREY TEXTURED

SIZE	CODE	IDENT NO.	DWG NO.	ISSUE
D	82679	MS	7206	0

NOTICE TO PERSONS RECEIVING THIS DRAWING
THE TECHNICAL MATERIEL CORPORATION claims proprietary right in the material disclosed hereon. This drawing is issued in confidence for engineering information only and may not be reproduced or used to manufacture anything shown hereon without permission from THE TECHNICAL MATERIEL CORPORATION to the user. This drawing is loaned for mutual assistance and is subject to recall at any time.