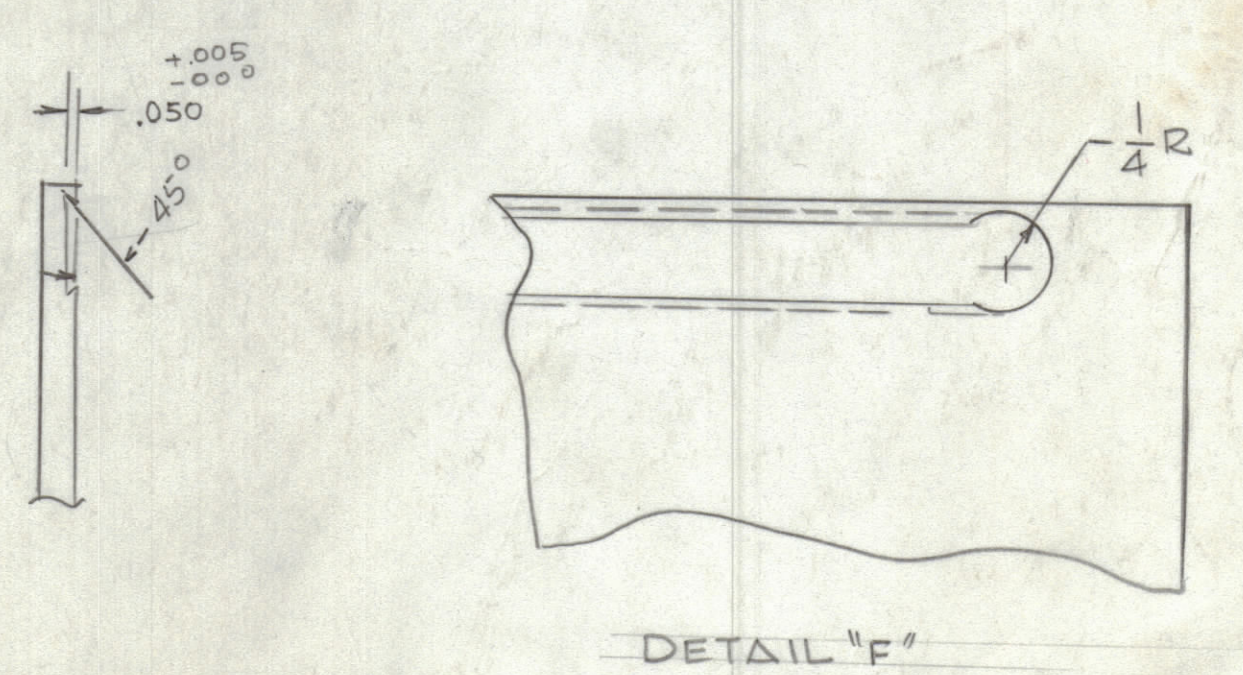
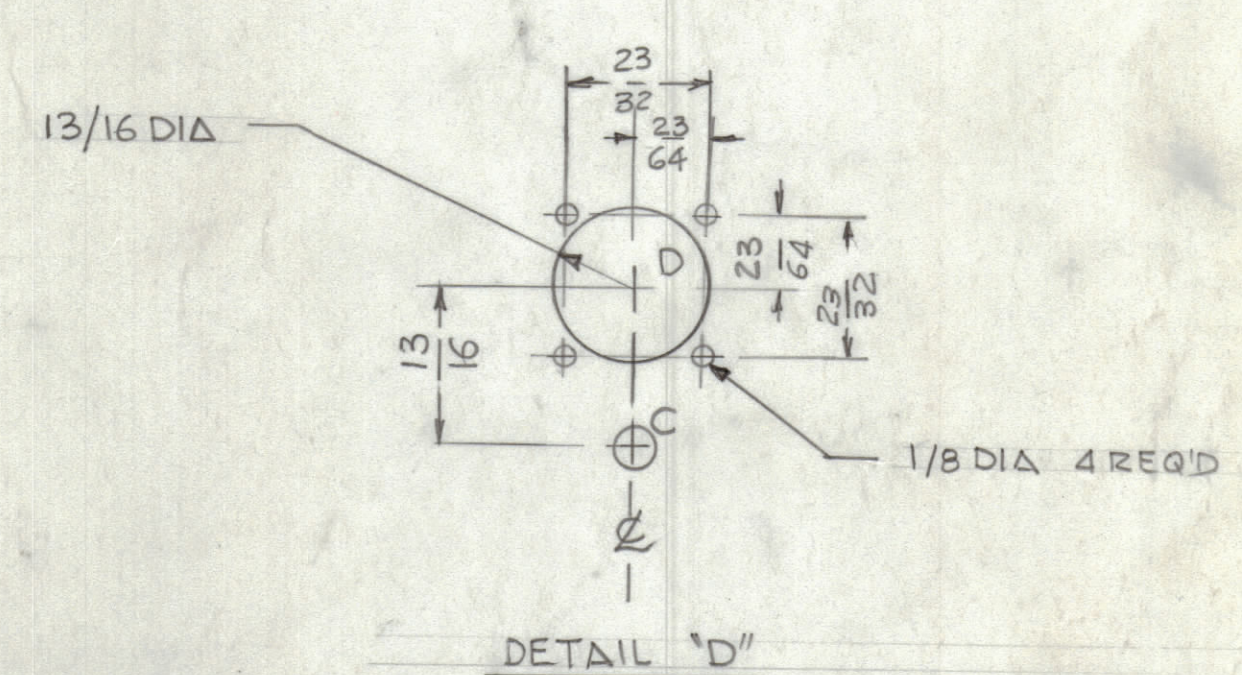
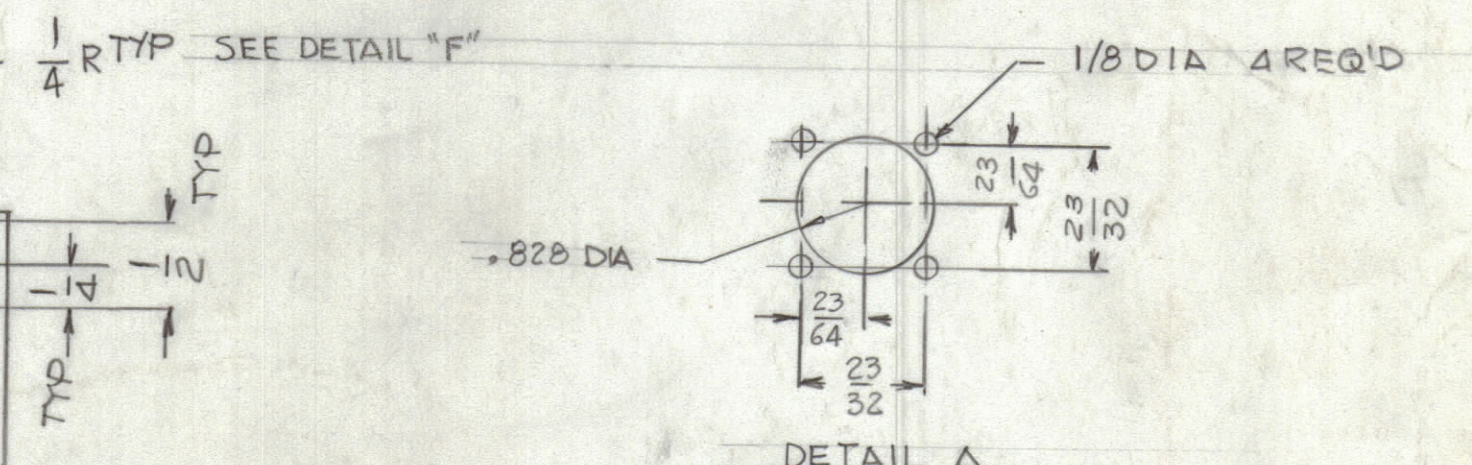
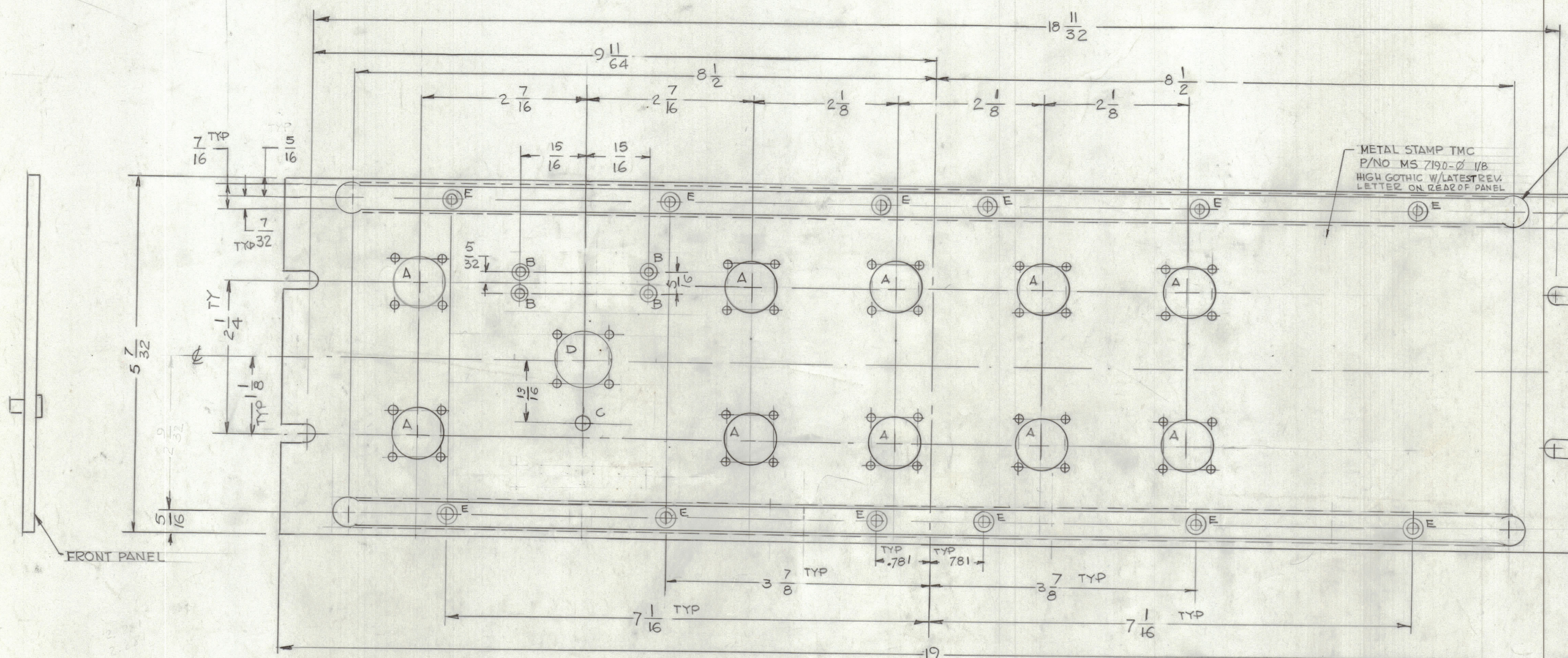


REVISIONS							
E.M.N.O	DRAFT	CHKD	ZONE	LTR	DESCRIPTION	DATE	APPROVED
	GDL			Ø	ORIGINAL RELEASE FOR PRODUCTION	8-11-87	



HOLES	DIMENSION	REQ'D
A	SEE DETAIL 'A'	10
B	DRILL & C'SHK 120D .82" TO .230 D.	4
C	.246 <sup>+0.002</sup> DRILL FOR TIGHT FIT BB 115 AFTER CAUSTIC DIP	1
D	SEE DETAIL 'D'	1
E	DRILL & C'SHK .144 DIA 82" TO .284 DIA	12

NOTE: FINISH  
 S 404 IRIDITE  
 S 114 ZINC CHROMATE PRIMER  
 PAINT FOR S1165 (MIL-E-15090 REV B TYPE 3 CLASS 2) OR PRIME & PAINT IN ACCORDANCE TO CUSTOMERS SPECIFICATION.

QTY. REQ.	ITEM	PART NO.	DESCRIPTION	SYMBOL
1	BB 115		BEARING, OILITE	C

LIST OF MATERIAL			
FINAL APPROVAL	DATE	<b>THE TECHNICAL MATERIEL CORP.</b> MAMARONECK, NEW YORK  <b>FRONT PANEL, MACHINING</b> (QDP-1000)	
MECH. DES.	DATE		
ELECT. DES.	DATE		
CHECKED	DATE		
DRAWN	DATE	SIZE CODE IDENT NO. DWG NO. ISSUE D 82679 MS 7190 Ø	
MATERIAL 3/16 THK ALUM 2024-T3		SCALE 1:1 SHEET OF	
FINISH SEE NOTE			

QTY / UNIT	MODEL USED ON	ASS'Y NO.
1	QDP-1000	
APPLICATION		
CODE		
NOTICE TO PERSONS RECEIVING THIS DRAWING THE TECHNICAL MATERIEL CORPORATION claims proprietary right in the material disclosed hereon. This drawing is issued in confidence for engineering information only and may not be reproduced or used to manufacture anything shown hereon without permission from THE TECHNICAL MATERIEL CORPORATION to the user. This drawing is loaned for mutual assistance and is subject to recall at any time.		

D

D

C

C

B

B

A

A

MS

Ø