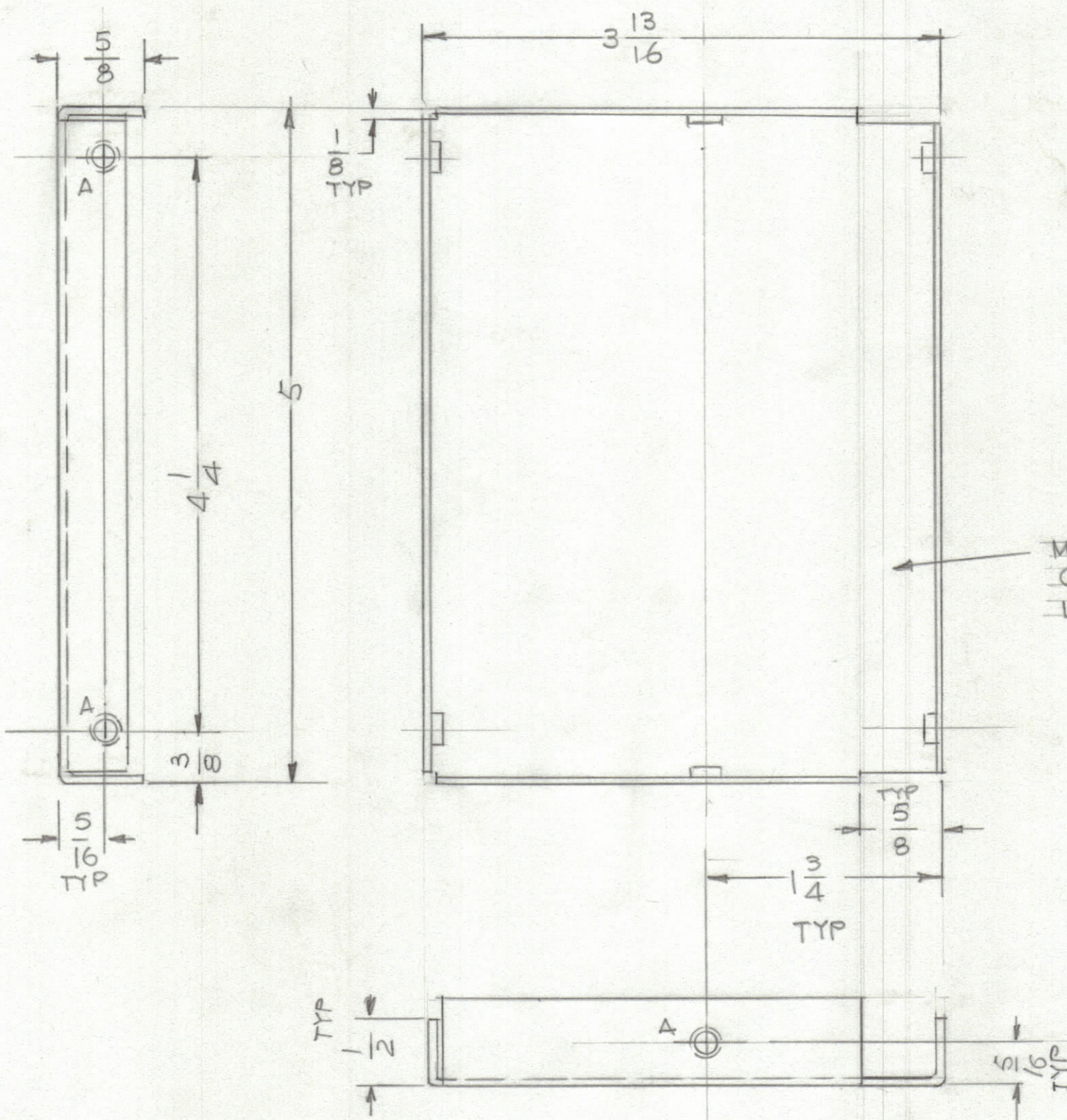


REVISIONS						
ZONE	LTR	DESCRIPTION	DATE	E.M.N.NO	DRAFT	CHKD APPD
Q		ORIGINAL RELEASE FOR PRODUCTION	9/18/84			FVB



MS 7154 -1 BEND OPPOSITE (RIGHT SIDE)
 MS 7154 -2 AS SHOWN (LEFT SIDE)

MARK TMC P/NO 1/8 HIGH
 GOTHIC W/LATEST REV.
 LETTER

HOLES -
 A -.191-.194 DIA 6 REQ'D

D/B 8/24/84

QTY. REQ.	ITEM	PART NO.	DESCRIPTION	SYMBOL
5	1	TE129-0632-4	NUT ROUND	

LIST OF MATERIAL
THE TECHNICAL MATERIEL CORP.
 MAMARONECK, NEW YORK

UNLESS OTHERWISE SPECIFIED DIMENSIONS ARE IN INCHES AND INCLUDE CHEMICALLY APPLIED OR PLATED FINISHES	FINAL APPROVAL <i>QOB</i>	DATE 9/18/84
TOLERANCES ON	MECH. DES.	DATE
DECIMALS .X ± .05 .XX ± .01 .XXX ± .005	ELECT. DES.	DATE
FRACTIONS ± 1/64 ANGLES ± 0° -30'	CHECKED	DATE
	DRAWN G.D.L	DATE 9-10-84

SIDE PLATE
 PSB-7 (4) 3S

—	BSP-7 (4) 3S	
QTY / UNIT	MODEL USED ON	ASS'Y NO.
APPLICATION		
	CODE	

NOTICE TO PERSONS RECEIVING THIS DRAWING
 THE TECHNICAL MATERIEL CORPORATION claims proprietary right in the material disclosed hereon. This drawing is issued in confidence for engineering information only and may not be reproduced or used to manufacture anything shown hereon without permission from THE TECHNICAL MATERIEL CORPORATION to the user. This drawing is loaned for mutual assistance and is subject to recall at any time.

MATERIAL .063-THK ALUM. 5052-H32	SIZE	CODE IDENT.NO	DWG NO.	ISSUE
FINISH 5404 YEL. IRIDITE	C	82679	MS 7155	Ø

SCALE 1:1	SHEET	OF
-----------	-------	----