

4

3

2

1

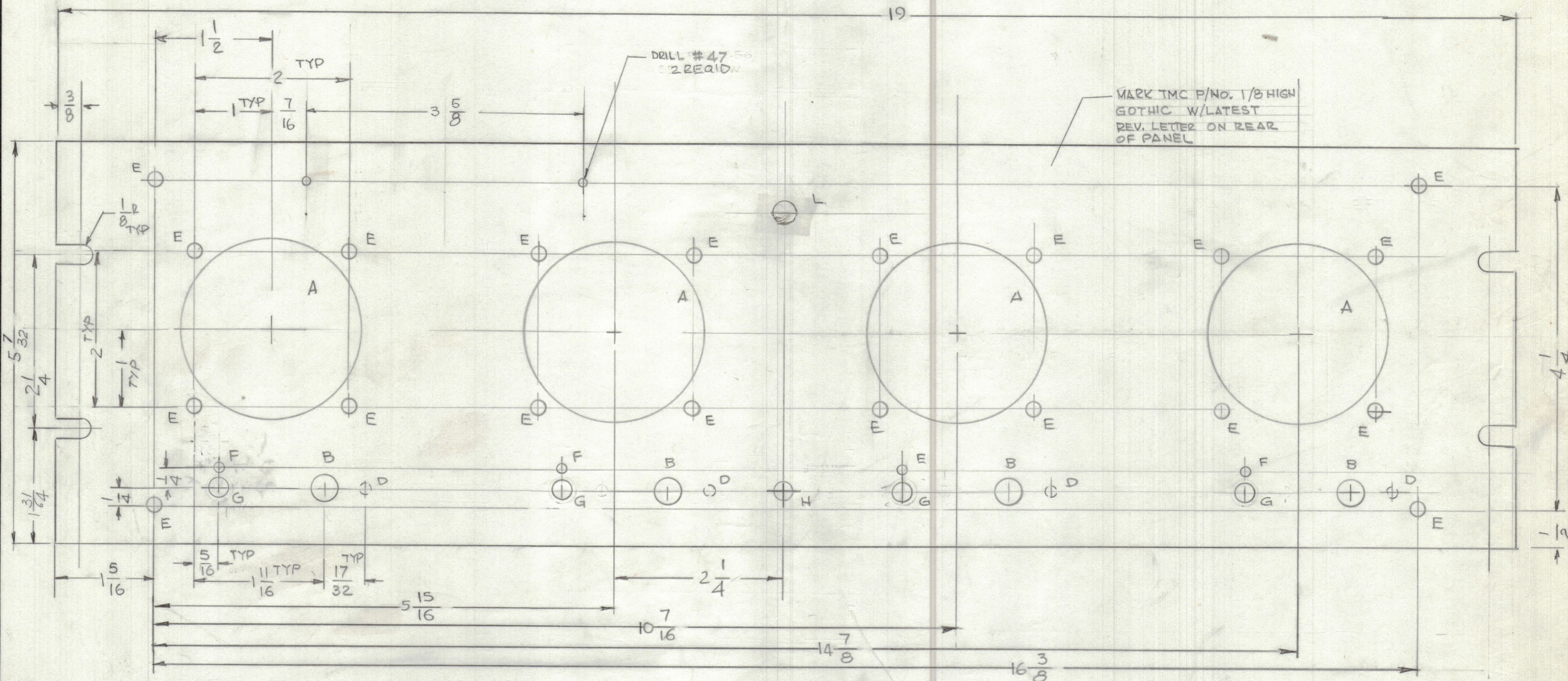
REVISIONS						
ZONE	LTR	DESCRIPTION	DATE	E.M.N.NO	DRAFT	CHKD APPD
		ORIGINAL RELEASE FOR PRODUCTION	9/18/84			JTB

FINISH NOTES

- 1- SAO4 IRIDITE 1A-2 AL-COAT
  - 2- S11A ZINC CHROMATE PRIMER
  - 3- MIL-E-10509 TYPE 3-CL-2
  - LIGHT GRAY SEMI GLASS
  - BAKING ENAMEL
- FRONT &  
EDGES ONLY

HOLES

- A- 2 5/16 DIA 4 REQ'D
- B- 13/32 DIA 4 REQ'D
- C- \_\_\_\_\_
- D 9/64 DIA X 1/8 DEEP 4 REQ'D
- E 11/64 DIA 20 REQ'D
- F 5/32 DIA 4 REQ'D
- G 17/64 DIA 4 REQ'D
- H 15/64 DIA
- L 5/16 DIA



MACHINING:

1. MILL ALL EDGES.
2. HOLES MUST BE DRILLED, UNLESS OTHERWISE SPECIFIED.
3. LATERAL BOW OF PANEL MUST BE KEPT TO .031 TOLERANCE.
4. PANEL MUST BE FREE OF ALL MACHINING MARKS, GOUGES AND SCRATCHES. IF NECESSARY, SAND FRONT OF PANEL WITH NO. 120 GRIT SANDPAPER.

REF: LD 3158

UNLESS OTHERWISE SPECIFIED DIMENSIONS ARE IN INCHES AND INCLUDE CHEMICALLY APPLIED OR PLATED FINISHES

TOLERANCES ON

DECIMALS .X ± .05  
.XX ± .01  
.XXX ± .005

FRACTIONS ± 1/64  
ANGLES ± 0°-30'

MATERIAL 3/16 THK ALUM 2024-T3

FINISH SEE NOTE

QTY. REQ.	ITEM	PART NO.	DESCRIPTION	SYMBOL
LIST OF MATERIAL				
FINAL APPROVAL		DATE	<b>THE TECHNICAL MATERIEL CORP.</b> MAMARONECK, NEW YORK  <b>PANEL, FRONT</b> BSP-7(4) 35	
MECH. DES.		DATE		
ELECT. DES.		DATE		
CHECKED		DATE		
DRAWN		DATE		
MATERIAL		SIZE		CODE IDENT. NO.
FINISH		C		82679
		SCALE		MS 7153
		1:1		ISSUE
		SHEET		OF

QTY / UNIT	MODEL USED ON	ASS'Y NO.
APPLICATION		
CODE		
NOTICE TO PERSONS RECEIVING THIS DRAWING THE TECHNICAL MATERIEL CORPORATION claims proprietary right in the material disclosed hereon. This drawing is issued in confidence for engineering information only and may not be reproduced or used to manufacture anything shown hereon without permission from THE TECHNICAL MATERIEL CORPORATION to the user. This drawing is loaned for mutual assistance and is subject to recall at any time.		

4

3

2

1