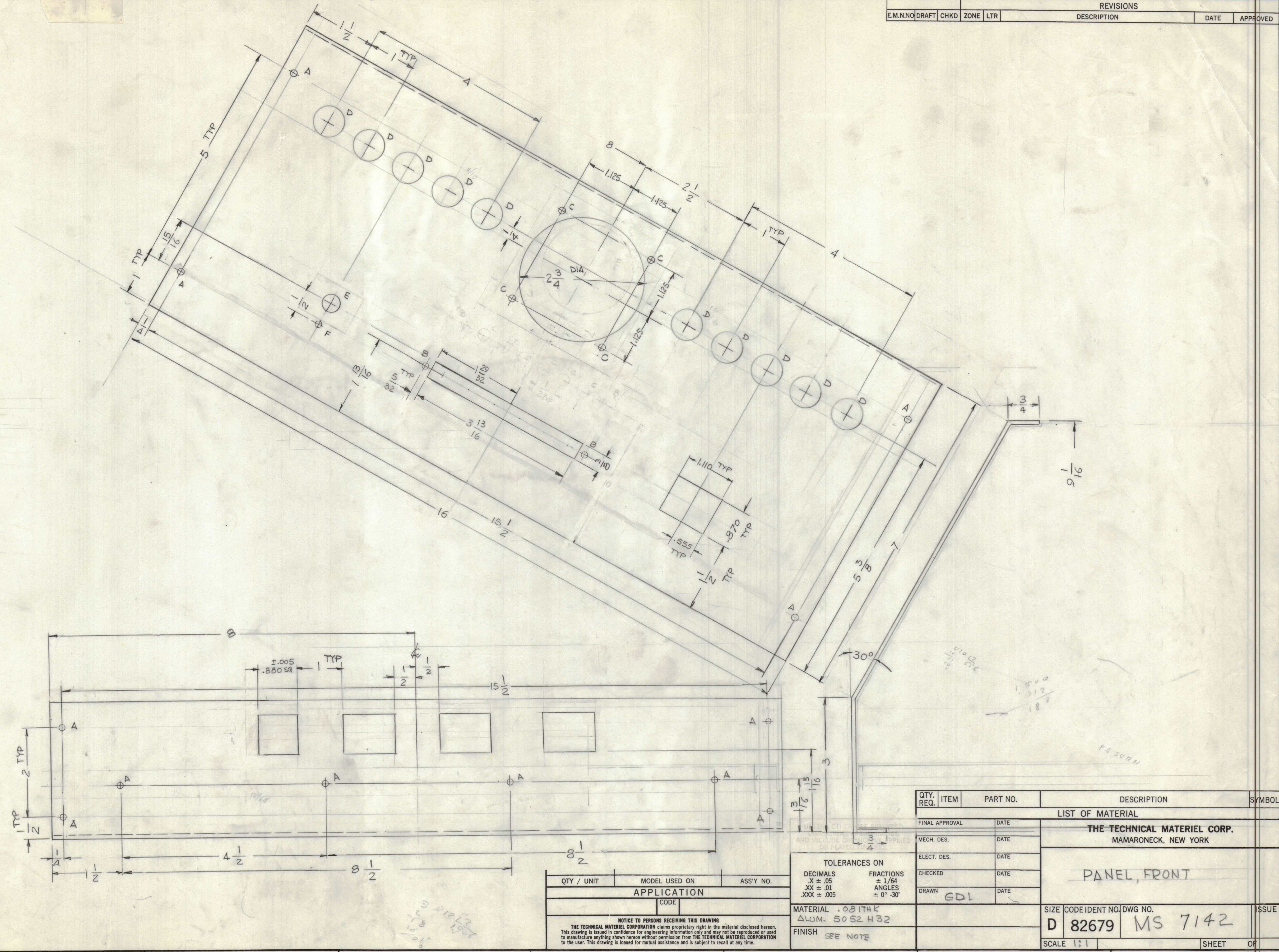


- HOLES**
- A - 13/64 DIA 12 REQ'D
 - B - 11/64 DIA 4 REQ'D
 - C - 5/32 DIA 4 REQ'D
 - D - 11/16 DIA 10 REQ'D
 - E - 13/32 DIA
 - F - 3/16 DIA

FINISH NOTES:

1. S404 - IRIDITE 14-2 AL-COAT.
2. S114 - ZINC CHROMATE PRIMER
3. MIL-F-10509 TYPE 3 CL 2 5520 BLU/GRAY TEX. VINYL

FRONT AND EDGES ONLY
PRIME AND PAINT PER CUSTOMER'S SPECIFICATIONS



QTY. REQ.	ITEM	PART NO.	DESCRIPTION	SYMBOL
LIST OF MATERIAL				
THE TECHNICAL MATERIEL CORP.				
MAMARONECK, NEW YORK				
PANEL, FRONT				

FINAL APPROVAL	DATE	PANEL, FRONT
MECH. DES.	DATE	
ELECT. DES.	DATE	
CHECKED	DATE	
DRAWN	DATE	

GDI

MATERIAL	.081THK	SIZE	CODE	IDENT NO.	DWG NO.	ISSUE
FINISH	SEE NOTE	D	82679	MS	7142	

SCALE 1:1 SHEET OF

QTY / UNIT	MODEL USED ON	ASS'Y NO.
	APPLICATION	
	CODE	

NOTICE TO PERSONS RECEIVING THIS DRAWING
 THE TECHNICAL MATERIEL CORPORATION claims proprietary right in the material disclosed hereon. This drawing is issued in confidence for engineering information only and may not be reproduced or used to manufacture anything shown hereon without permission from THE TECHNICAL MATERIEL CORPORATION to the user. This drawing is loaned for mutual assistance and is subject to recall at any time.

TOLERANCES ON	
DECIMALS	FRACTIONS
.X ± .05	± 1/64
.XX ± .01	ANGLES
.XXX ± .005	± 0° - 30'