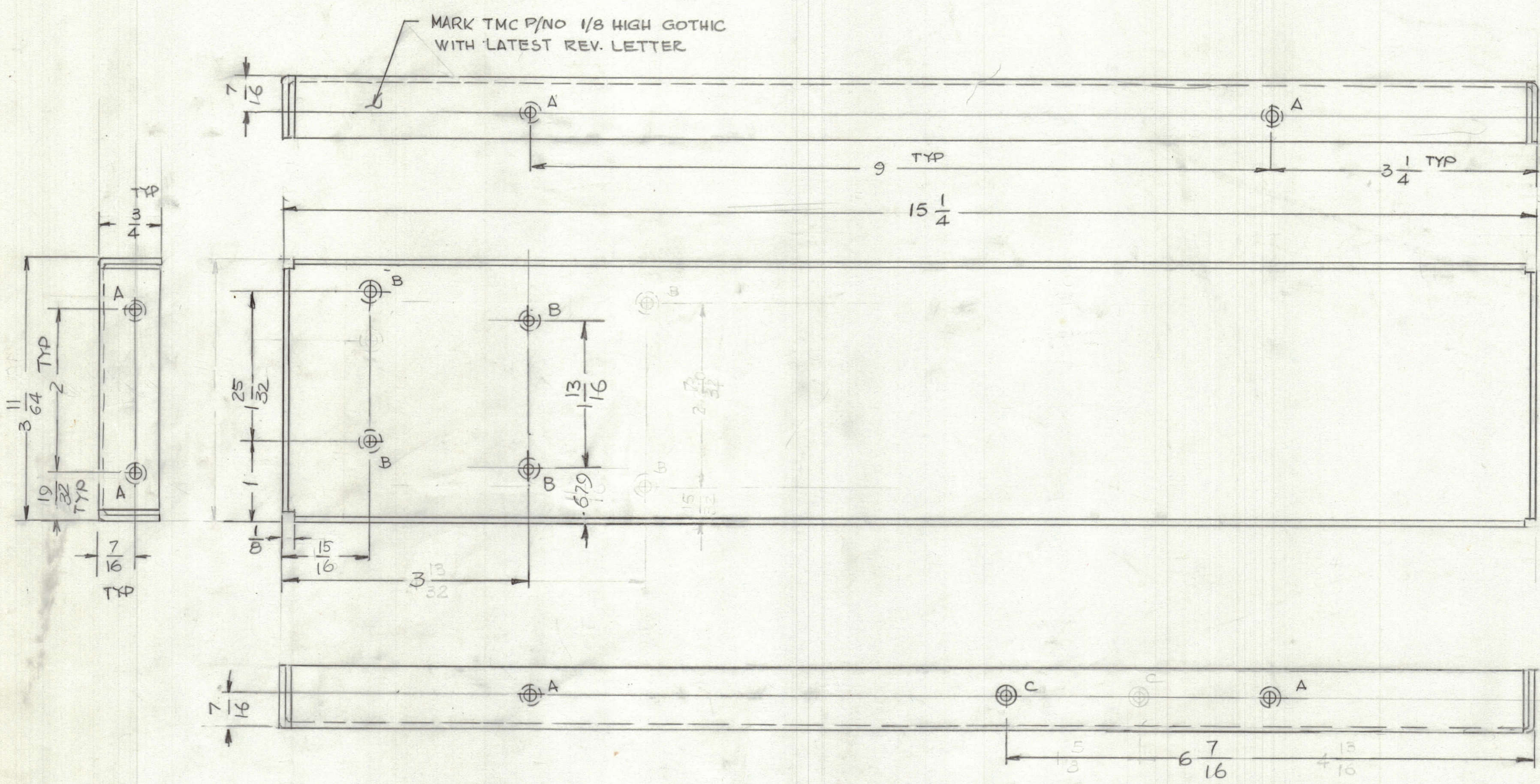


REVISIONS						
ZONE	LTR	DESCRIPTION	DATE	E.M.N.NO	DRAFT	CHKD APPD
	φ	ORIGINAL RELEASE FOR PRODUCTION	7/24/83			



HOLES
 A- .191 - .194 DIA 8 REQ'D
 B- .140 DIA C'SHK 82° TO .296 DIA 4 REQ'D
 C- .120 DIA C'SHK 82° TO .230 DIA 1 REQ'D

UNLESS OTHERWISE SPECIFIED:
 1. USE MATERIAL THICKNESS FOR MAXIMUM RADIUS ON ALL BENDS.
 2. ALL ANGULAR BENDS 90 DEGREES.
 3. REMOVE ALL BURRS AND SHARP EDGES.
 4. MOUNT INSERTS AFTER FINISHING.

1	MAC-2	
QTY / UNIT	MODEL USED ON	ASS'Y NO.
APPLICATION		
CODE		

NOTICE TO PERSONS RECEIVING THIS DRAWING
 THE TECHNICAL MATERIEL CORPORATION claims proprietary right in the material disclosed hereon. This drawing is issued in confidence for engineering information only and may not be reproduced or used to manufacture anything shown hereon without permission from THE TECHNICAL MATERIEL CORPORATION to the user. This drawing is loaned for mutual assistance and is subject to recall at any time.

UNLESS OTHERWISE SPECIFIED DIMENSIONS ARE IN INCHES AND INCLUDE CHEMICALLY APPLIED OR PLATED FINISHES

TOLERANCES ON
 DECIMALS .X ± .05
 .XX ± .01
 .XXX ± .005
 FRACTIONS ± 1/64
 ANGLES ± 0° -30'

MATERIAL .063 THK ALUM. 5052-H32
 FINISH 5404 YEL. IRIDITE

8	1	NT129-0632-4	NUT, ROUND	A
QTY. REQ.	ITEM	PART NO.	DESCRIPTION	SYMBOL
LIST OF MATERIAL				
FINAL APPROVAL <i>GDL</i> DATE 7/20/83				
MECH. DES. DATE				
ELECT. DES. DATE				
CHECKED DATE				
DRAWN <i>GDL</i> DATE				
THE TECHNICAL MATERIEL CORP. MAMARONECK, NEW YORK				
PLATE LEFT SIDE				
SIZE	CODE	IDENT. NO.	DWG NO.	ISSUE
C	82679		MS7112	φ
SCALE	1:1		SHEET	OF