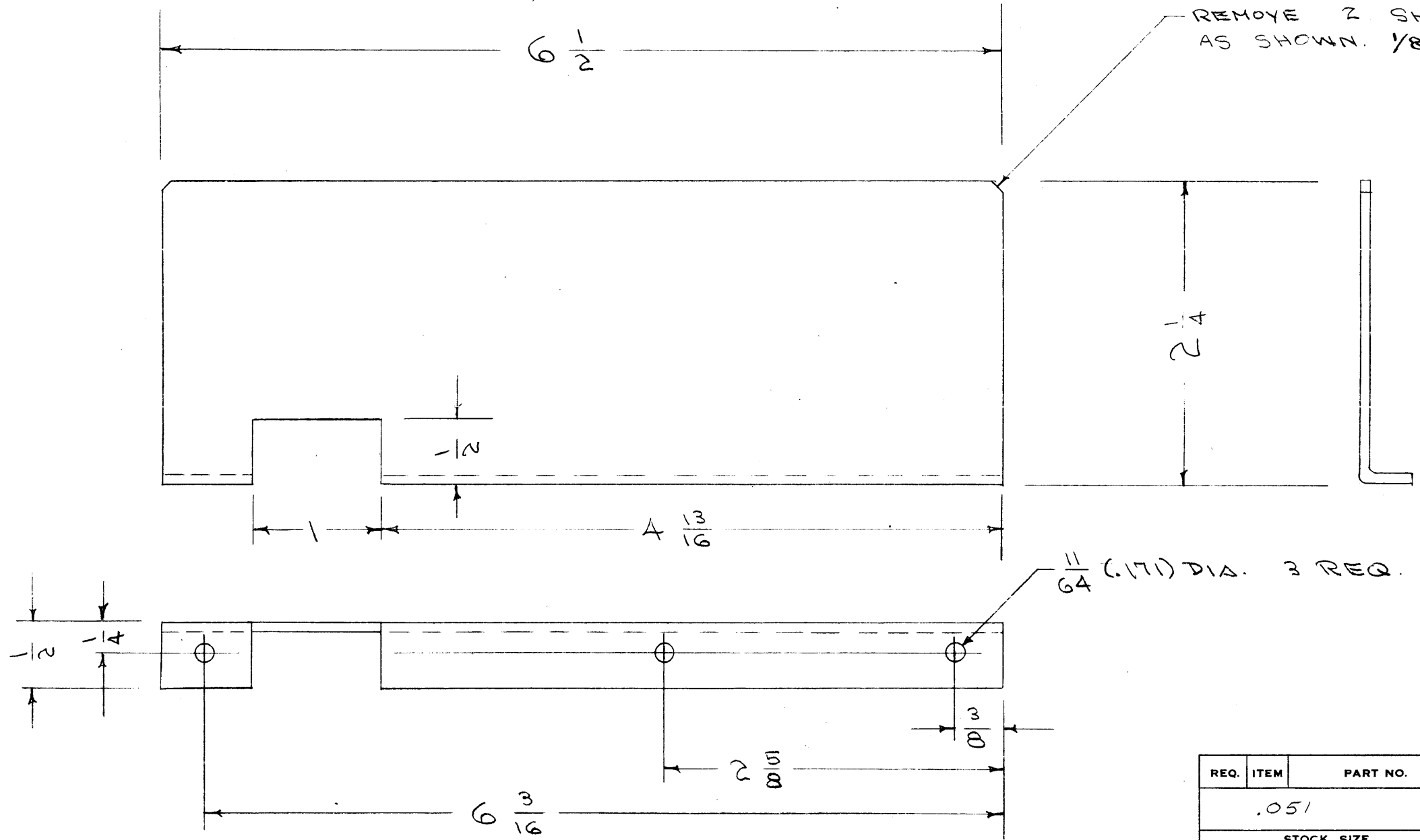


IF IT IS FOUND DESIRABLE TO CHANGE ANY TOLERANCE OR OTHER DETAIL SPECIFIED ON THIS DRAWING NOTIFY THE PURCHASER PROMPTLY.

MAXIMUM ALLOWABLE TOLERANCES HAVE BEEN DETERMINED AND DEVIATIONS WILL BE CAUSE FOR REJECTION. REMOVE ALL BURRS AND SHARP EDGES

MS-708 A



**NOTICE TO PERSONS RECEIVING THIS DRAWING**  
 THE TECHNICAL MATERIEL CORPORATION claim proprietary right in the material disclosed hereon. This drawing is issued in confidence for engineering information only and may not be reproduced or used to manufacture anything shown hereon without permission from THE TECHNICAL MATERIEL CORPORATION to the user. This drawing is loaned for mutual assistance and is subject to recall at any time.  
 Property of:  
 THE TECHNICAL MATERIEL CORPORATION  
 MAMARONECK, NEW YORK

| REQ. | ITEM | PART NO.           | DESCRIPTION  | SYMBOL |
|------|------|--------------------|--|--------|
|      |      | .051               | THE TECHNICAL MATERIEL CORP.<br>MAMARONECK, NEW YORK |        |
|      |      | STOCK SIZE         |  |        |
|      |      | ALUMINUM           | SHIELD, BOTTOM                                       |        |
|      |      | MATERIAL           | POW/AMP  |        |
|      |      | 528 H32            |  |        |
|      |      | WEIGHT PER PC.     |  |        |
|      |      | TYPE & TEMPER      |  |        |
|      |      | HEAT TREAT. SPEC.  |  |        |
|      |      | FINISH & SPEC. NO. |  |        |
|      |      |                    | 5-404 YELLOW IRIDITE                                 |        |

| ISSUE | ITEM | CHANGED FROM    | DATE    | CN. NO. | DRAFTS | CHECKER | ENG. APP. |
|-------|------|-----------------|---------|---------|--------|---------|-----------|
| A     | 1    | S-404 WAS S-101 | 12/4/54 | 1001    | AE     |         | EMN       |

| REQ. PER UNIT | MODEL | PROJECT NO. | ASS'Y. NO. | DATE     |
|---------------|-------|-------------|------------|----------|
| 1             | RTF-2 | F/A         |            | 11-20-58 |
| 1             | RTF   |             |            | 9-26-55  |

IF IT IS FOUND DESIRABLE TO CHANGE ANY TOLERANCE OR OTHER DETAIL SPECIFIED ON THIS DRAWING NOTIFY THE PURCHASER PROMPTLY.

MAXIMUM ALLOWABLE TOLERANCES HAVE BEEN DETERMINED AND DEVIATIONS WILL BE CAUSE FOR REJECTION. REMOVE ALL BURRS AND SHARP EDGES

MS-709 C

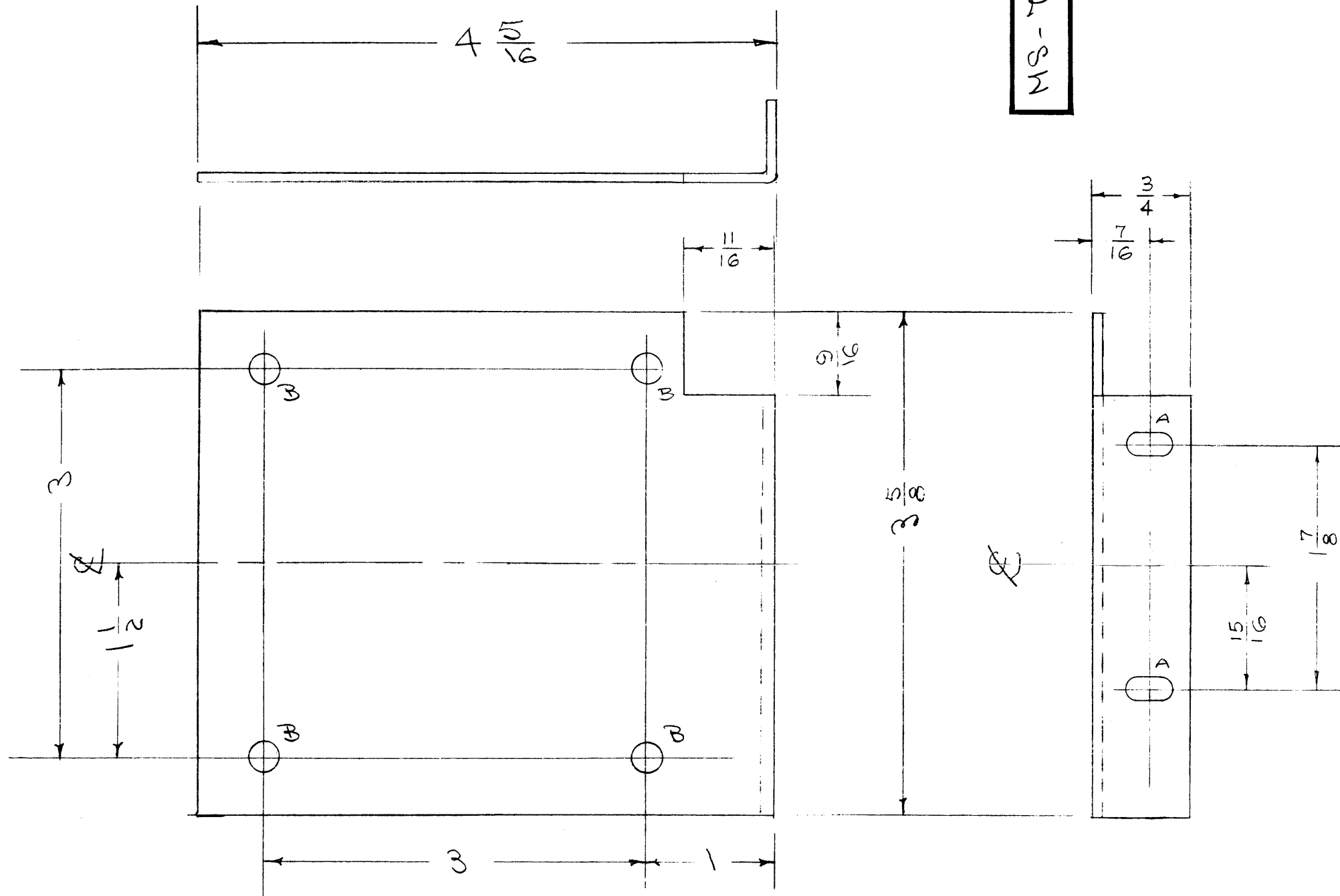
NOTICE TO PERSONS RECEIVING THIS DRAWING

THE TECHNICAL MATERIEL CORPORATION claims proprietary right in the material disclosed hereon. This drawing is issued in confidence for engineering information only and may not be reproduced or used to manufacture anything shown hereon without permission from THE TECHNICAL MATERIEL CORPORATION to the user. This drawing is loaned for mutual assistance and is subject to recall at any time.

Property of:  
THE TECHNICAL MATERIEL CORPORATION  
MAMARONECK, NEW YORK

A - 3/16 x 3/8 SLOT 2  
B - 1/4 (.250) D. HOLE A

REQ. 11



|   |   |                          |         |      |     |     |     |
|---|---|--------------------------|---------|------|-----|-----|-----|
| C | 1 | S-404 WAS S-101          | 17/4/59 | 1001 | AKB |     | EMN |
| B | 3 | 35/8 was 3 3/4           | 5/2/56  | 2    | JAG | eww | W   |
|   | 2 | 9/16 was 5/8             |         |      |     |     |     |
| A | 1 | 45/16 was 4 1/2          | 3/9/55  | 1    | PB  | JAG | WOC |
|   | 4 | 3 3/4 WAS 3 7/8          |         |      |     |     |     |
|   | 3 | LIP WAS 11/16            |         |      |     |     |     |
|   | 2 | SLOTS WERE 11/64 x 11/32 |         |      |     |     |     |
|   | 1 | CUT OUT ADDED            |         |      |     |     |     |

|            |      |  |   |         |        |         |           |
|------------|------|--|---|---------|--------|---------|-----------|
| ISSUE      | ITEM | CHANGED FROM                                       | DATE  | CN. NO. | DRAFTS | CHECKER | ENG. APP. |
| TOLERANCES |      |  |   |         |        |         |           |
| ALL OTHERS |      | DEC. DIM. ±<br>FRAC. DIM. ± 1/64<br>ANGULAR DIM. ± | SCALE:<br>DRILL, PUNCH, COMMERCIAL STOCK<br>SIZES AND MANUFACTURERS<br>TOLERANCES ARE NOT INCLUDED. |         |        |         |           |

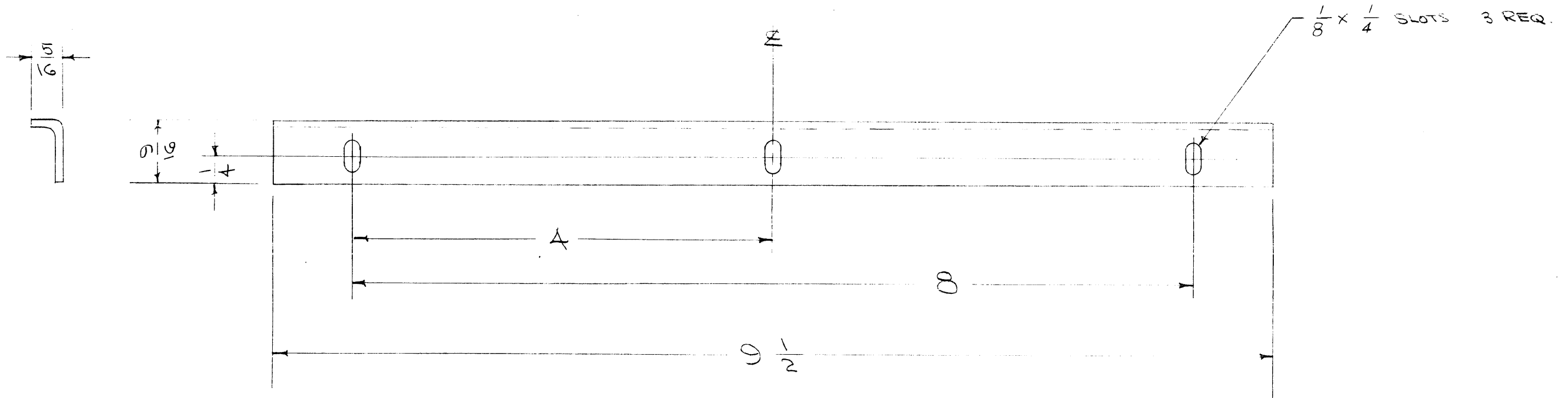
|               |       |             |            |
|---------------|-------|-------------|------------|
| 1             | RTF-2 | T/A         | 11-20-58   |
| 1             | RTF   |             | 9-26-55    |
| REQ. PER UNIT | MODEL | PROJECT NO. | ASS'Y. NO. |
| USED ON       |       |             |            |

|                    |      |                      |  |                |
|--------------------|------|----------------------|--|----------------|
| REQ.               | ITEM | PART NO.             | DESCRIPTION  | SYMBOL         |
|                    |      | .064                 | THE TECHNICAL MATERIEL CORP.<br>MAMARONECK, NEW YORK |                |
| STOCK SIZE         |      | ALUMINUM             | TOP SUPPORT, (TF-155)                                |                |
| MATERIAL           |      | WEIGHT PER PC.       | Pow / AMPL.  |                |
| TYPE & TEMPER      |      |                      | CDR. 9/26/55   | 1/11/56        |
| HEAT TREAT. SPEC.  |      |                      | JAG  | WOC            |
| FINISH & SPEC. NO. |      | S-404 YELLOW IRIDITE | CHECKED  | FINAL APPROVAL |
|                    |      |                      |  | MS-709 C       |

IF IT IS FOUND DESIRABLE TO CHANGE ANY TOLERANCE OR OTHER DETAIL SPECIFIED ON THIS DRAWING NOTIFY THE PURCHASER PROMPTLY.

MAXIMUM ALLOWABLE TOLERANCES HAVE BEEN DETERMINED AND DEVIATIONS WILL BE CAUSE FOR REJECTION. REMOVE ALL BURRS AND SHARP EDGES

MS-722 A



NOTICE TO PERSONS RECEIVING THIS DRAWING

THE TECHNICAL MATERIEL CORPORATION claims proprietary right in the material disclosed hereon. This drawing is issued in confidence for engineering information only and may not be reproduced or used to manufacture anything shown hereon without permission from THE TECHNICAL MATERIEL CORPORATION to the user. This drawing is loaned for mutual assistance and is subject to recall at any time.

Property of:

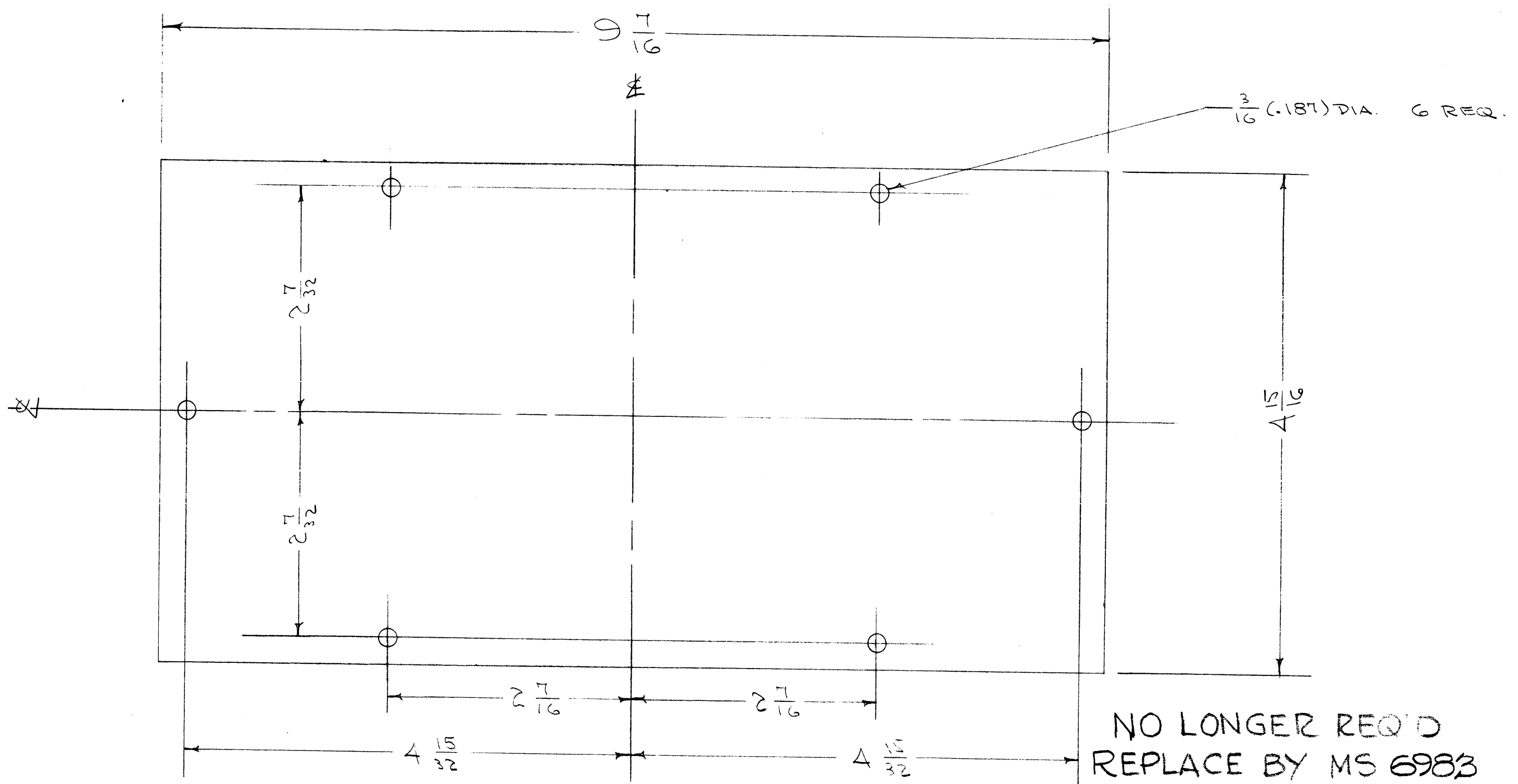
THE TECHNICAL MATERIEL CORPORATION  
MAMARONECK, NEW YORK

| REQ.               | ITEM | PART NO.             | DESCRIPTION  | SYMBOL          |
|--------------------|------|----------------------|--|-----------------|
|                    |      | .040                 | THE TECHNICAL MATERIEL CORP.<br>MAMARONECK, NEW YORK |                 |
| ALUMINUM           |      | —                    | HOLDER, METER MOUNT                                  |                 |
| MATERIAL           |      | WEIGHT PER PC.       | F/P  |                 |
|                    |      | 52 S H32             | CDD 10-A 55  | MM - 1/3/56     |
| TYPE & TEMPER      |      | —                    | DRAWN  | ELEC. DES. APP. |
| HEAT TREAT. SPEC.  |      | —                    | MECH. DES. APP.                                      |                 |
| FINISH & SPEC. NO. |      | S-404 YELLOW IRIDITE | CHECKED  | FINAL APPROVAL  |
|                    |      |                      |  | MS-722 A        |

| ISSUE | ITEM | CHANGED FROM    | DATE   | CN. NO. | DRAFTS | CHECKER | ENG. APP. |
|-------|------|-----------------|--------|---------|--------|---------|-----------|
| A     | 1    | S-404 WAS S-101 | 7/4/59 | 1001    | A3     |         | EMN       |

| REQ. PER UNIT | MODEL  | PROJECT NO. | ASS'Y. NO. | DATE     |
|---------------|--------|-------------|------------|----------|
| 2             | RTF-2  | F/P         |            | 11-19-58 |
| 2             | R.T.F. |             |            | 10-4-55  |

MS-739 B



NO LONGER REQ'D  
REPLACE BY MS 6983

| ISSUE | ITEM | CHANGED FROM    | DATE     | CH. NO. | DRAFTS | CHECKER | ENG. APP. |
|-------|------|-----------------|----------|---------|--------|---------|-----------|
| B     |      | NOTE            | 2-11-50  | 21776   | MC     | AK      | FR        |
| A     | 1    | S-404 WAS S-101 | 12/14/59 | 1001    | AC     | AK      | EMN       |

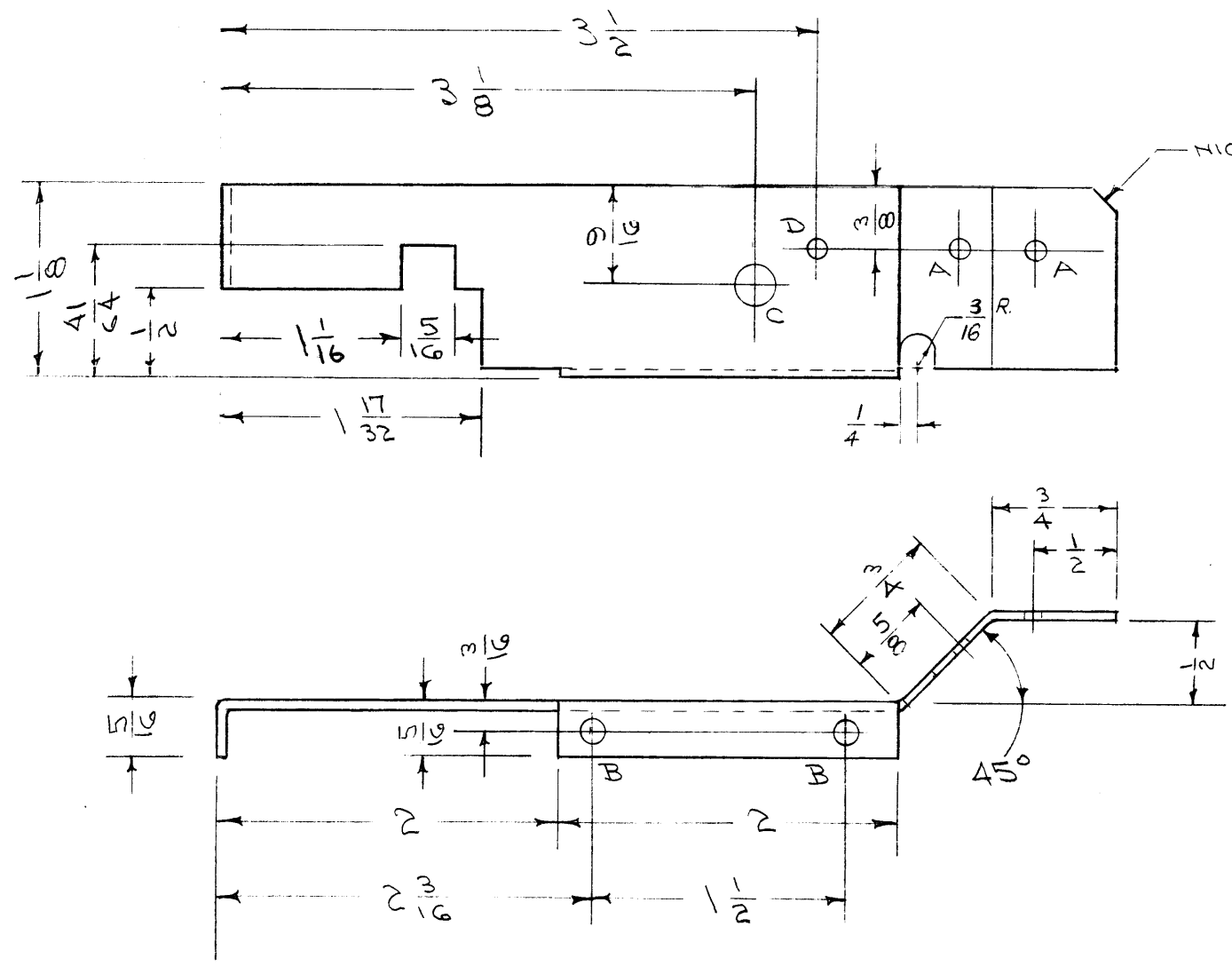
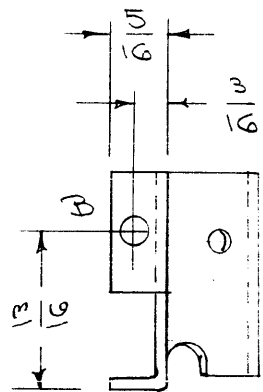
  

| TOLERANCES        |  | SCALE:   |
|-------------------|--|--|
| DEC. DIM. ±       |  | MAXIMUM ALLOWABLE TOLERANCES HAVE BEEN DETERMINED AND ANY DEVIATIONS WILL BE CAUSE FOR REJECTION. REMOVE ALL BURRS AND SHARP EDGES |
| FRAC. DIM. ± 1/64 |  |  |
| ANGULAR DIM. ±    |  |  |

| REQ. PER UNIT | MODEL   | PROJECT NO. | ASS'Y. NO. | DATE    |
|---------------|---------|-------------|------------|---------|
| 1             | HFD-1-2 |             |            | 2-12-56 |
| 1             | LFD-1-2 |             |            | 11-2-55 |

| REQ. ITEM            | PART NO. | DESCRIPTION  | SYMBOL |
|----------------------|----------|--|--------|
| .051                 |          | THE TECHNICAL MATERIEL CORP.<br>MAMARONECK, NEW YORK |        |
| ALUMINUM             |          | COVER  |        |
|                      |          | LFD-1,2 HFD-1,2                                      |        |
| 528 H32              | —#—      | EDS. 1/2/K   | AK     |
| S-404 YELLOW IRIDITE |          | DRAWN  | AK     |
|                      |          | CHECKED  | AJJ.   |
|                      |          | ELEC. DES. APP.                                      | MS-739 |
|                      |          | MECH. DES. APP.                                      | B      |





NICK CORNER APPROX.  $\sqrt{8}$

NOTICE TO PERSONS RECEIVING THIS DRAWING

THE TECHNICAL MATERIEL CORPORATION claims proprietary right in the material disclosed hereon. This drawing is issued in confidence for engineering information only and may not be reproduced or used to manufacture anything shown hereon without permission from THE TECHNICAL MATERIEL CORPORATION to the user. This drawing is loaned for mutual assistance and is subject to recall at any time.

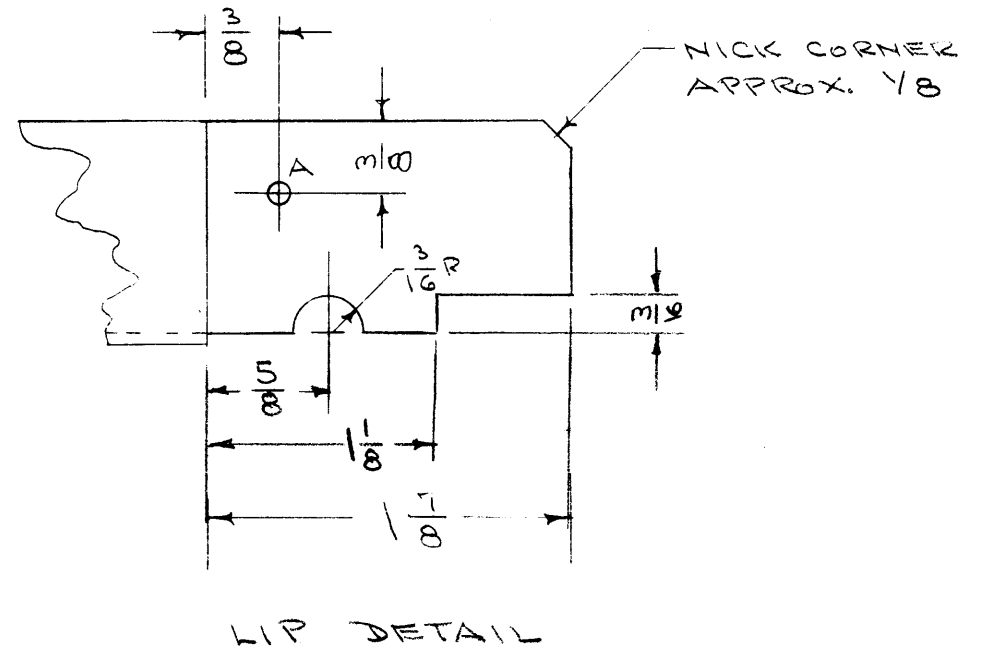
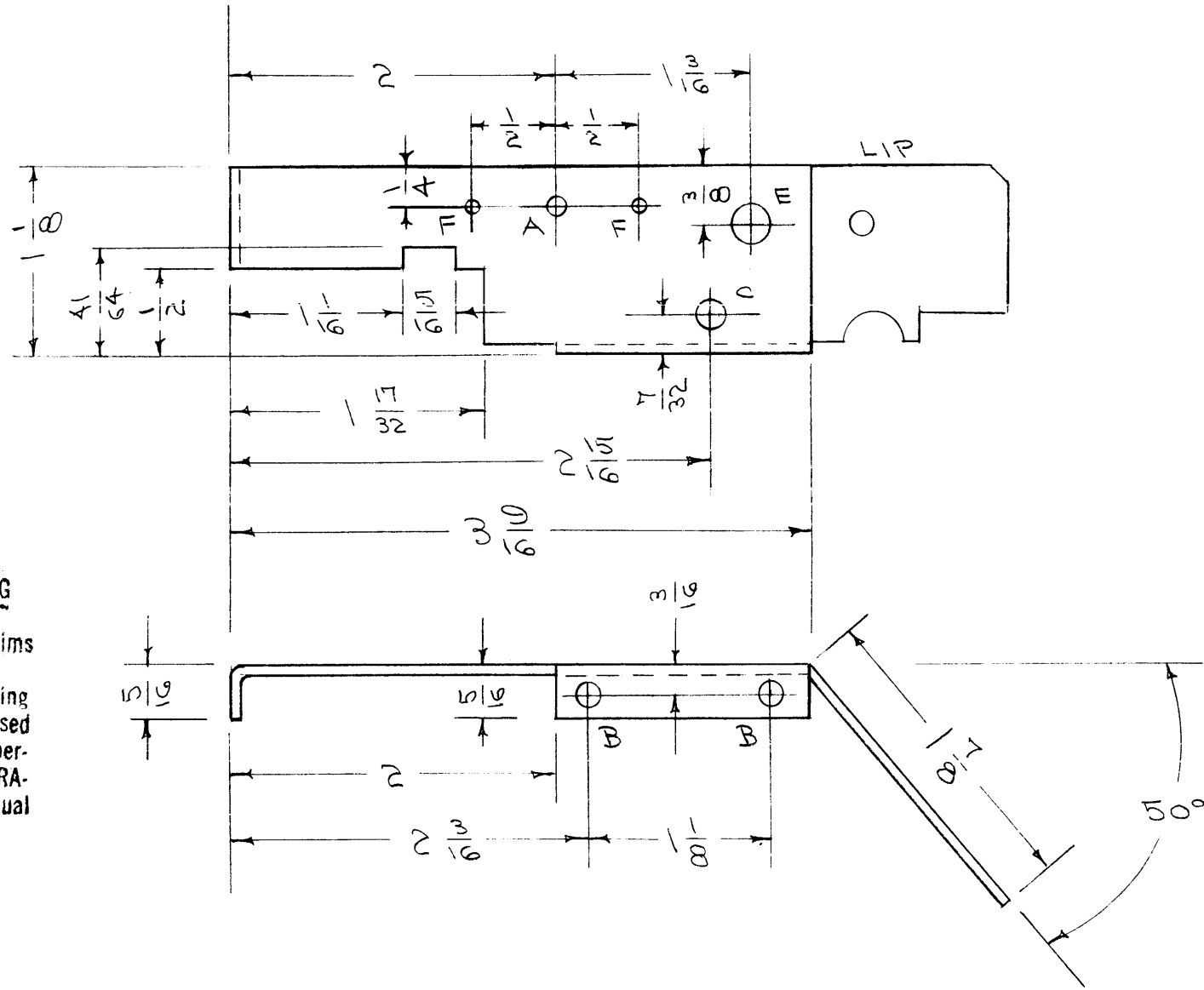
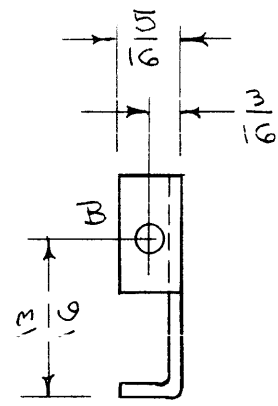
Property of:  
THE TECHNICAL MATERIEL CORPORATION  
MAMARONECK, NEW YORK

- A -  $\frac{1}{8}$  (.125) DIA. 2 HOLES REQ.
- B -  $\frac{3}{64}$  (.140) " 3 " "
- C -  $\frac{1}{4}$  (.250) " 1 " "
- D -  $\frac{3}{32}$  (.093) " 1 " "

| ISSUE                         | ITEM | CHANGED FROM   | DATE     | CH. NO. | DRAFTS | CHECKER | ENG. APP. |
|-------------------------------|------|--|----------|---------|--------|---------|-----------|
| A                             | 1    | S-454 WAS S-101  | 12/14/59 | 1001    | AK     |         | EMN       |
| TOLERANCES                    |      | SCALE:   |          |         |        |         |           |
| DEC. DIM. $\pm$               |      | MAXIMUM ALLOWABLE TOLERANCES HAVE BEEN DETERMINED AND ANY DEVIATIONS WILL BE CAUSE FOR REJECTION. REMOVE ALL BURRS AND SHARP EDGES |          |         |        |         |           |
| FRAC. DIM. $\pm \frac{1}{64}$ |      |  |          |         |        |         |           |
| ANGULAR DIM. $\pm 1^\circ$    |      |  |          |         |        |         |           |

| REQ. PER UNIT | MODEL      | PROJECT NO. | ASS'Y. NO. | DATE     |
|---------------|------------|-------------|------------|----------|
| 1             | FFRD-1-2-3 | E-458-P     |            | 11-11-55 |

| REQ. ITEM            | PART NO. | DESCRIPTION  | SYMBOL                      |
|----------------------|----------|--|-----------------------------|
| .040                 |          | THE TECHNICAL MATERIEL CORP.<br>MAMARONECK, NEW YORK | SHIELD, FRONT<br>FFRD-1-2-3 |
| STOCK SIZE           |          |  |                             |
| ALUMINUM             |          |  |                             |
| MATERIAL             |          |  |                             |
| 52S H32              |          | COO "11155"  |                             |
| TYPE & TEMPER        |          | HEAT TREAT. SPEC.                                    |                             |
| S-404 YELLOW IRIDITE |          |  |                             |
| FINISH & SPEC. NO.   |          | ELEC. DES. APP.                                      | MECH. DES. APP.             |
|                      |          | PLK. 3-275A  | MS-750 A                    |



**NOTICE TO PERSONS RECEIVING THIS DRAWING**

THE TECHNICAL MATERIEL CORPORATION claims proprietary right in the material disclosed hereon. This drawing is issued in confidence for engineering information only and may not be reproduced or used to manufacture anything shown hereon without permission from THE TECHNICAL MATERIEL CORPORATION to the user. This drawing is loaned for mutual assistance and is subject to recall at any time.

Property of:

THE TECHNICAL MATERIEL CORPORATION  
MAMARONECK, NEW YORK

- A - 1/8 (.125) DIA. 2 HOLES REQ.
- B - 9/64 (.140) " 3 " "
- C - 3/16 (.187) " 1 " "
- E - 1/4 (.250) " 1 " "
- F - 3/32 (.093) " 2 " "

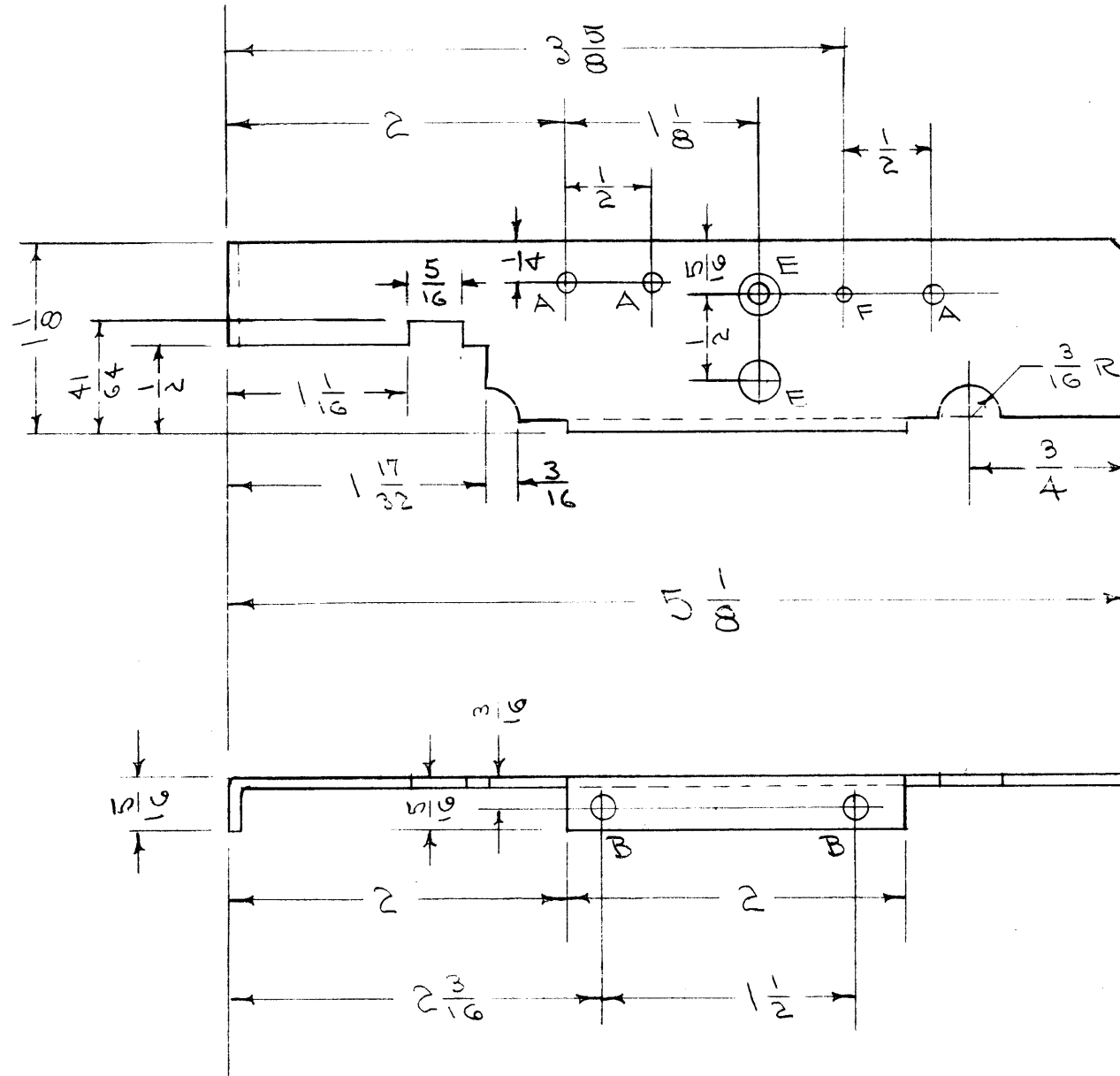
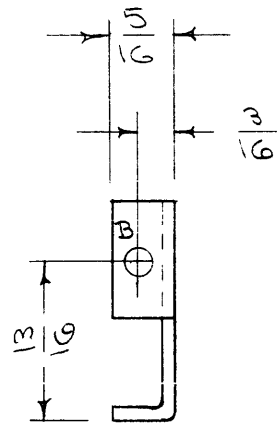
| ISSUE | ITEM | CHANGED FROM    | DATE    | CH. NO. | DRAFTS | CHECKER | ENG. APP. |
|-------|------|-----------------|---------|---------|--------|---------|-----------|
| C     | 1    | S-404 WAS S-101 | 12/4/59 | 1001    | JR     |         | EMN       |
| B     | 1    | NOTCH Added     | 3/1/58  | 2       | JR     | W       |           |
| A     | 1    | 1" F HOLE ADDED | 6/28/56 | 1       | COO    | JR      |           |

|                   |  |   |  |
|-------------------|--|---|--|
| TOLERANCES        |  | SCALE:  |  |
| DEC. DIM. ±       |  | MAXIMUM ALLOWABLE TOLERANCES HAVE BEEN DETERMINED AND ANY DEVIATIONS WILL BE CAUSE FOR REJECTION. |  |
| FRAC. DIM. ± 1/64 |  | REMOVE ALL BURRS AND SHARP EDGES  |  |
| ANGULAR DIM. ± 1° |  |   |  |

|               |            |             |            |          |
|---------------|------------|-------------|------------|----------|
| 1             | FFRD-1-2-3 | 458         |            | 11-11-55 |
| REQ. PER UNIT | MODEL      | PROJECT NO. | ASS'Y. NO. | DATE     |
| USED ON       |            |             |            |          |

| REQ. ITEM | PART NO.             | DESCRIPTION  |                 |         | SYMBOL         |
|-----------|----------------------|--|-----------------|---------|----------------|
|           | .040                 | THE TECHNICAL MATERIEL CORP.<br>MAMARONECK, NEW YORK |                 |         |                |
|           | STOCK SIZE           | SHIELD, CENTER                                       |                 |         |                |
|           | ALUMINUM             | FFRD-1-2-3   |                 |         |                |
|           | MATERIAL             |  |                 |         |                |
| 528 H32   |                      | COO 11/15  | JR              | W       |                |
|           | TYPE & TEMPER        | HEAT TREAT. SPEC.                                    | DRAWN           | CHECKED | FINAL APPROVAL |
|           | S-404 YELLOW IRIDITE |  | PLK. 3/2/56     | W       | MS-751 C       |
|           | FINISH & SPEC. NO.   | ELEC. DES. APP.                                      | MECH. DES. APP. |         |                |



NICK CORNER APPROX 1/8

NOTICE TO PERSONS RECEIVING THIS DRAWING

THE TECHNICAL MATERIEL CORPORATION claims proprietary right in the material disclosed herein. This drawing is issued in confidence for engineering information only and may not be reproduced or used to manufacture anything shown hereon without permission from THE TECHNICAL MATERIEL CORPORATION to the user. This drawing is loaned for technical assistance and is subject to recall at any time.

Property of:  
**THE TECHNICAL MATERIEL CORPORATION**  
 MAMARONECK, NEW YORK

- A - 1/8 (.125) DIA.      3 HOLES REQ.
- B - 9/64 (.140) "      3 " "
- E - 1/4 (.250) "      2 " "
- F - 3/32 (.093) "      1 " "

|                   |      |                 |   |         |        |         |           |
|-------------------|------|-----------------|---|---------|--------|---------|-----------|
|                   |      |                 |   |         |        |         |           |
| A                 | 1    | S-404 WAS S-101 | 12/14/59  | 1001    | HL     |         | EMN       |
| ISSUE             | ITEM | CHANGED FROM    | DATE  | CH. NO. | DRAFTS | CHECKER | ENG. APP. |
| TOLERANCES        |      |                 | SCALE:  |         |        |         |           |
| DEC. DIM. ±       |      |                 | MAXIMUM ALLOWABLE TOLERANCES HAVE BEEN DETERMINED AND ANY DEVIATIONS WILL BE CAUSE FOR REJECTION. |         |        |         |           |
| FRAC. DIM. ± 1/64 |      |                 | REMOVE ALL BURRS AND SHARP EDGES  |         |        |         |           |
| ANGULAR DIM. ±    |      |                 |   |         |        |         |           |

|               |            |             |            |          |
|---------------|------------|-------------|------------|----------|
| 1             | FFRD-1-2-3 | 458         |            | 11-11-55 |
| REQ. PER UNIT | MODEL      | PROJECT NO. | ASS'Y. NO. | DATE     |
| USED ON       |            |             |            |          |

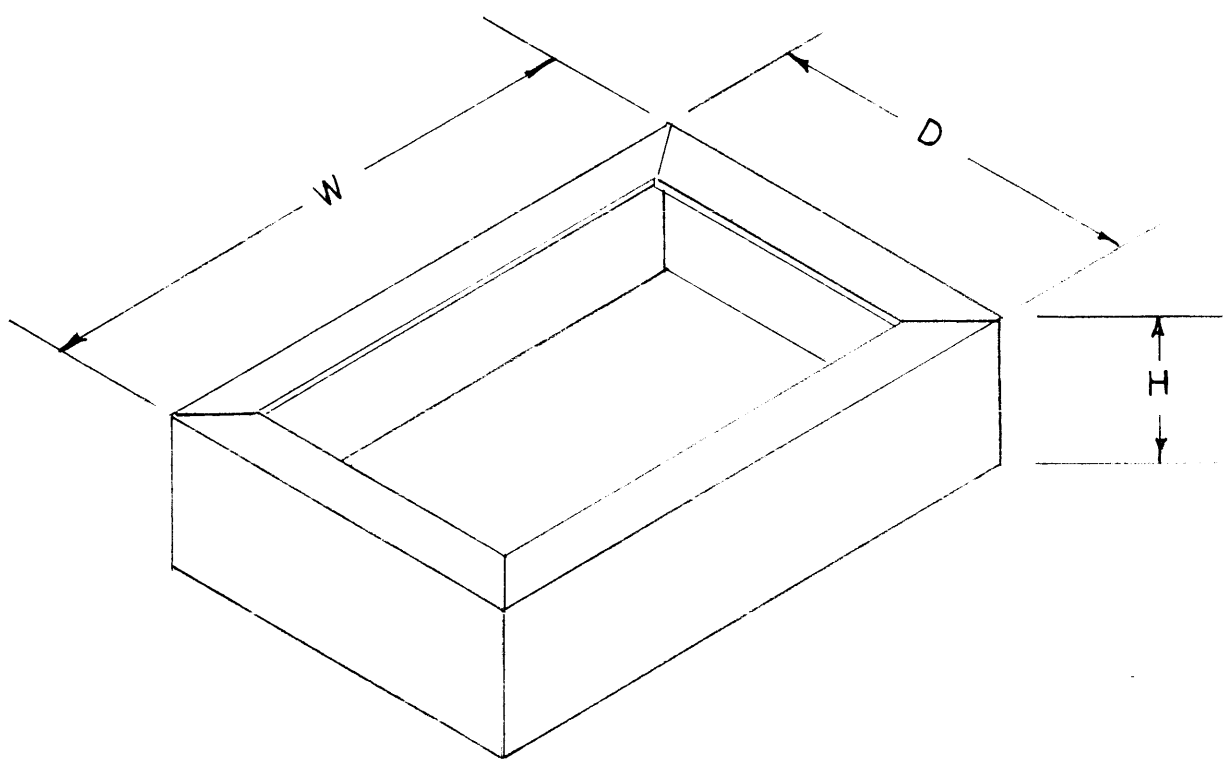
|                      |                   |                              |                 |                |        |
|----------------------|-------------------|------------------------------|-----------------|----------------|--------|
| REQ. ITEM            | PART NO.          | DESCRIPTION                  |                 |                | SYMBOL |
|                      | .040              | THE TECHNICAL MATERIEL CORP. |                 |                |        |
|                      | STOCK SIZE        | MAMARONECK, NEW YORK         |                 |                |        |
|                      | ALUMINUM          | SHIELD, REAR                 |                 |                |        |
|                      | MATERIAL          | FFRD-1-2-3                   |                 |                |        |
| 52S432               |                   | CD 1/11/59                   | HL              |                |        |
| TYPE & TEMPER        | HEAT TREAT. SPEC. | DRAWN                        | CHECKED         | FINAL APPROVAL |        |
| S-404 YELLOW IRIDITE |                   | P.L.K. 3/27/56               |                 | MS-752         | A      |
| FINISH & SPEC. NO.   |                   | ELEC. DES. APP.              | MECH. DES. APP. |                |        |



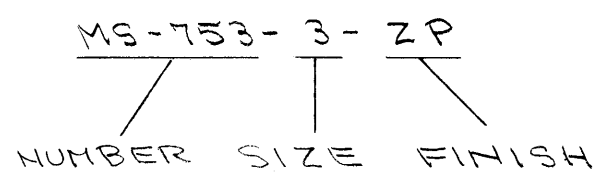
| TMC NO.  | BLACK WRINKLE CAT. NO. | ZINC PLATED CAT. NO. | D DEPTH | W WIDTH | H HEIGHT | GAUGE |
|----------|------------------------|----------------------|---------|---------|----------|-------|
| MS-753-1 | CB-628                 | CB-629               | 5"      | 7"      | 2"       | 22    |
| -2       | CB-644                 | CB-645               | 5"      | 9 1/2"  | 2 1/2"   |       |
| -3       | CB-788                 | CB-776               | 5"      | 9 1/2"  | 1 1/2"   |       |
| -4       | CB-604                 | CB-605               | 5"      | 10"     | 3"       |       |
| -5       | CB-789                 | CB-1191              | 7"      | 7"      | 2"       |       |
| -6       | CB-790                 | CB-1192              | 7"      | 9"      | 2"       |       |
| -7       | CB-791                 | CB-1193              | 7"      | 11"     | 2"       | 20    |
| -8       | CB-792                 | CB-793               | 7"      | 12"     | 3"       |       |
| -9       | CB-646                 | CB-1194              | 7"      | 13"     | 2"       |       |
| -10      | CB-647                 | CB-1198              | 5"      | 13 1/2" | 2 1/2"   |       |
| -11      | CB-649                 | CB-1189              | 7"      | 15"     | 3"       |       |
| -12      | CB-665                 | CB-666               | 8 1/2"  | 15"     | 3"       |       |
| -13      | CB-1068                | CB-1066              | 4"      | 17"     | 3"       |       |
| -14      | CB-648                 | CB-1199              | 7"      | 17"     | 2 1/2"   |       |
| -15      | CB-701                 | CB-702               | 8"      | 10"     | 2 1/2"   |       |
| -16      | CB-703                 | CB-704               | 8"      | 12"     | 2 1/2"   |       |
| -17      | CB-650                 | CB-774               | 8"      | 17"     | 2"       |       |
| -18      | CB-651 *               | CB-775               | 8"      | 17"     | 3"       |       |
| -19      | CB-652                 | CB-1195              | 10"     | 12"     | 3"       |       |
| -20      | CB-653                 | CB-779               | 10"     | 14"     | 3"       |       |
| -21      | CB-654 *               | CB-769               | 10"     | 17"     | 2"       |       |
| -22      | CB-636 *               | CB-637               | 10"     | 17"     | 3"       |       |
| -23      | CB-655 *               | CB-1196              | 10"     | 17"     | 3"       | 18    |
| -24      | CB-656                 | CB-1197              | 10"     | 23"     | 3"       |       |
| -25      | CB-657 *               | CB-770               | 11"     | 17"     | 2"       |       |
| -26      | CB-658 *               | CB-771               | 11"     | 17"     | 3"       |       |
| -27      | CB-663 *               | CB-661               | 12"     | 17"     | 2"       |       |
| -28      | CB-664 *               | CB-662               | 12"     | 17"     | 3"       |       |
| -29      | CB-659 *               | CB-772               | 13"     | 17"     | 2"       |       |
| -30      | CB-660 *               | CB-773               | 13"     | 17"     | 3"       |       |
| -31      | CB-640 *               | CB-641               | 10"     | 17"     | 4"       |       |
| -32      | CB-642 *               | CB-643               | 13"     | 17"     | 4"       |       |
| -33      | CB-623                 | CB-624               | 10"     | 17"     | 5"       |       |
| -34      | CB-625                 | CB-626               | 13"     | 17"     | 5"       |       |

MS-753

**STANDARD DRAWING**



TYPE DESIGNATION TO BE IN FOLLOWING FORM.



BW - BLACK WRINKLE  
ZP - ZINC PLATED

\* PUNCHED TO ACCOMODATE MTG. BRACKETS

NOTICE TO PERSONS RECEIVING THIS DRAWING

THE TECHNICAL MATERIEL CORPORATION claims proprietary right in the material disclosed hereon. This drawing is issued in confidence for engineering information only and may not be reproduced or used to manufacture anything shown hereon without permission from THE TECHNICAL MATERIEL CORPORATION to the user. This drawing is loaned for mutual assistance and is subject to recall at any time.

Property of:  
**THE TECHNICAL MATERIEL CORPORATION**  
MAMARONECK, NEW YORK

REF: BUD RADIO, INC.

| ISSUE | ITEM | CHANGED FROM | DATE | CH. NO. | DRAFTS | CHECKER | ENG. APP. |
|-------|------|--------------|------|---------|--------|---------|-----------|
|       |      |              |      |         |        |         |           |
|       |      |              |      |         |        |         |           |
|       |      |              |      |         |        |         |           |
|       |      |              |      |         |        |         |           |
|       |      |              |      |         |        |         |           |

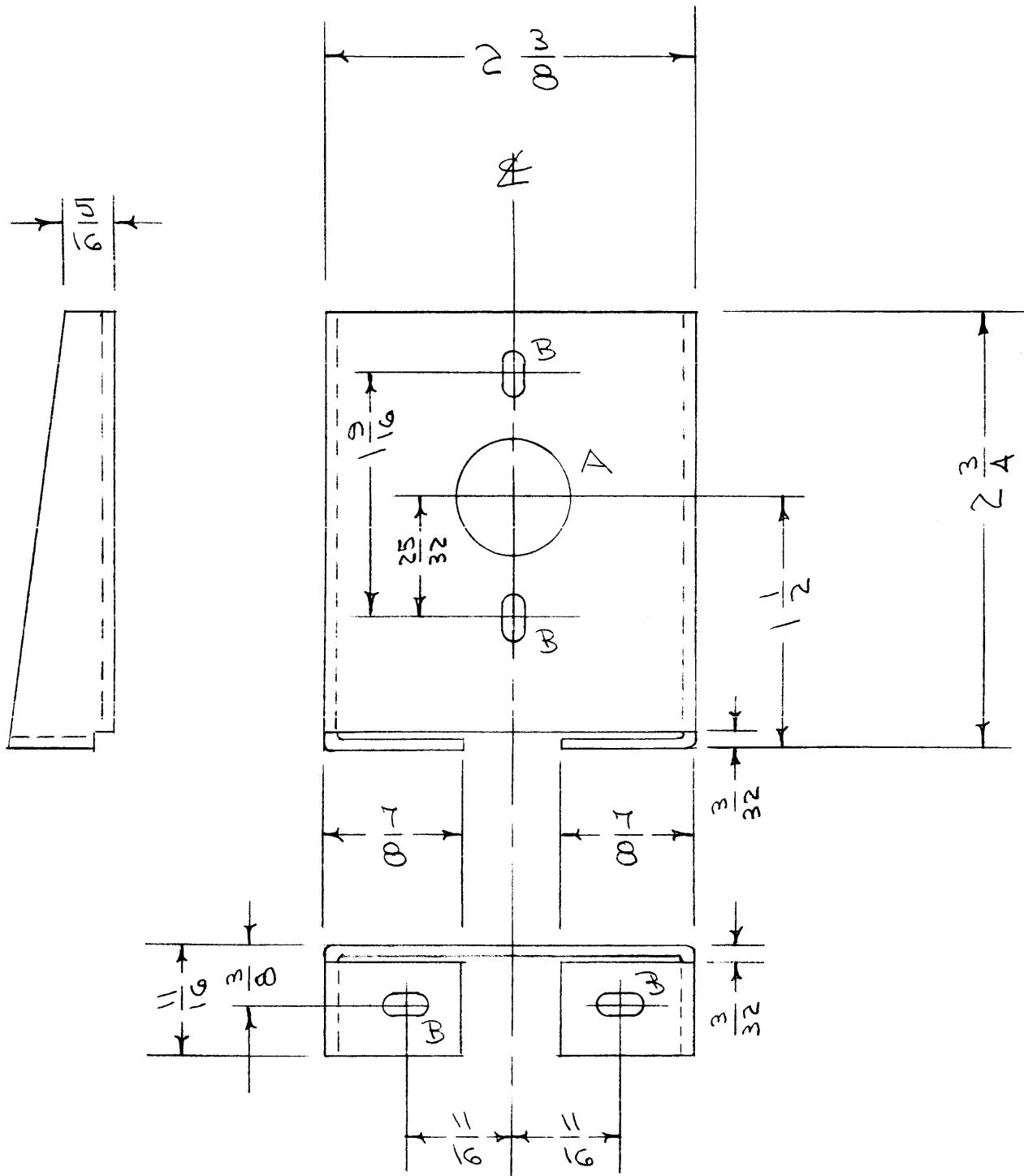
| REQ. ITEM          | PART NO. | DESCRIPTION  | SYMBOL |
|--------------------|----------|--|--------|
|                    |          | <b>THE TECHNICAL MATERIEL CORP.</b><br>MAMARONECK, NEW YORK  |        |
| STOCK SIZE         |          | CHASSIS BASE   |        |
| MATERIAL           |          |  |        |
| TYPE & TEMPER      |          | STEEL  |        |
| HEAT TREAT. SPEC.  |          |  |        |
| FINISH & SPEC. NO. |          |  |        |
| ELEC. DES. APP.    |          | <div style="display: flex; justify-content: space-around;"> <div> <br/>           DRAWN         </div> <div> <br/>           CHECKED         </div> <div> <br/>           FINAL APPROVAL         </div> </div> |        |
| MECH. DES. APP.    |          | MS-753   |        |

| REQ. PER UNIT | MODEL | PROJECT NO. | ASS'Y. NO. | DATE |
|---------------|-------|-------------|------------|------|
|               |       |             |            |      |

USED ON

SCALE:  
TOLERANCES:  
DEC. DIM. ±  
FRAC. DIM. ±  
ANGULAR DIM. ±

MAXIMUM ALLOWABLE TOLERANCES HAVE BEEN DETERMINED AND ANY DEVIATIONS WILL BE CAUSE FOR REJECTION. REMOVE ALL BURRS AND SHARP EDGES



A - 3/4 (.750) DIA. 1 HOLE REQ  
 B - 5/32 X 5/16 SLOT 4 SLOTS "

**NOTICE TO PERSONS RECEIVING THIS DRAWING**  
 THE TECHNICAL MATERIEL CORPORATION claims proprietary right in the material disclosed hereon. This drawing is issued in confidence for engineering information only and may not be reproduced or used to manufacture anything shown hereon without permission from THE TECHNICAL MATERIEL CORPORATION to the user. This drawing is loaned for mutual assistance and is subject to recall at any time.  
 Property of:  
 THE TECHNICAL MATERIEL CORPORATION  
 MAMARONECK, NEW YORK

| ISSUE             | ITEM | CHANGED FROM  | DATE    | CH. NO. | DRAFTS | CHECKER | ENG. APP. |
|-------------------|------|---|---------|---------|--------|---------|-----------|
| A                 | 1    | S-404 WAS S-101   | 12/4/59 | 1001    | AL     |         | EMN       |
| TOLERANCES        |      | SCALE:  |         |         |        |         |           |
| DEC. DIM. ±       |      | MAXIMUM ALLOWABLE TOLERANCES HAVE BEEN DETERMINED AND ANY DEVIATIONS WILL BE CAUSE FOR REJECTION. |         |         |        |         |           |
| FRAC. DIM. ± 1/64 |      | REMOVE ALL BURRS AND SHARP EDGES  |         |         |        |         |           |
| ANGULAR DIM. ±    |      |   |         |         |        |         |           |

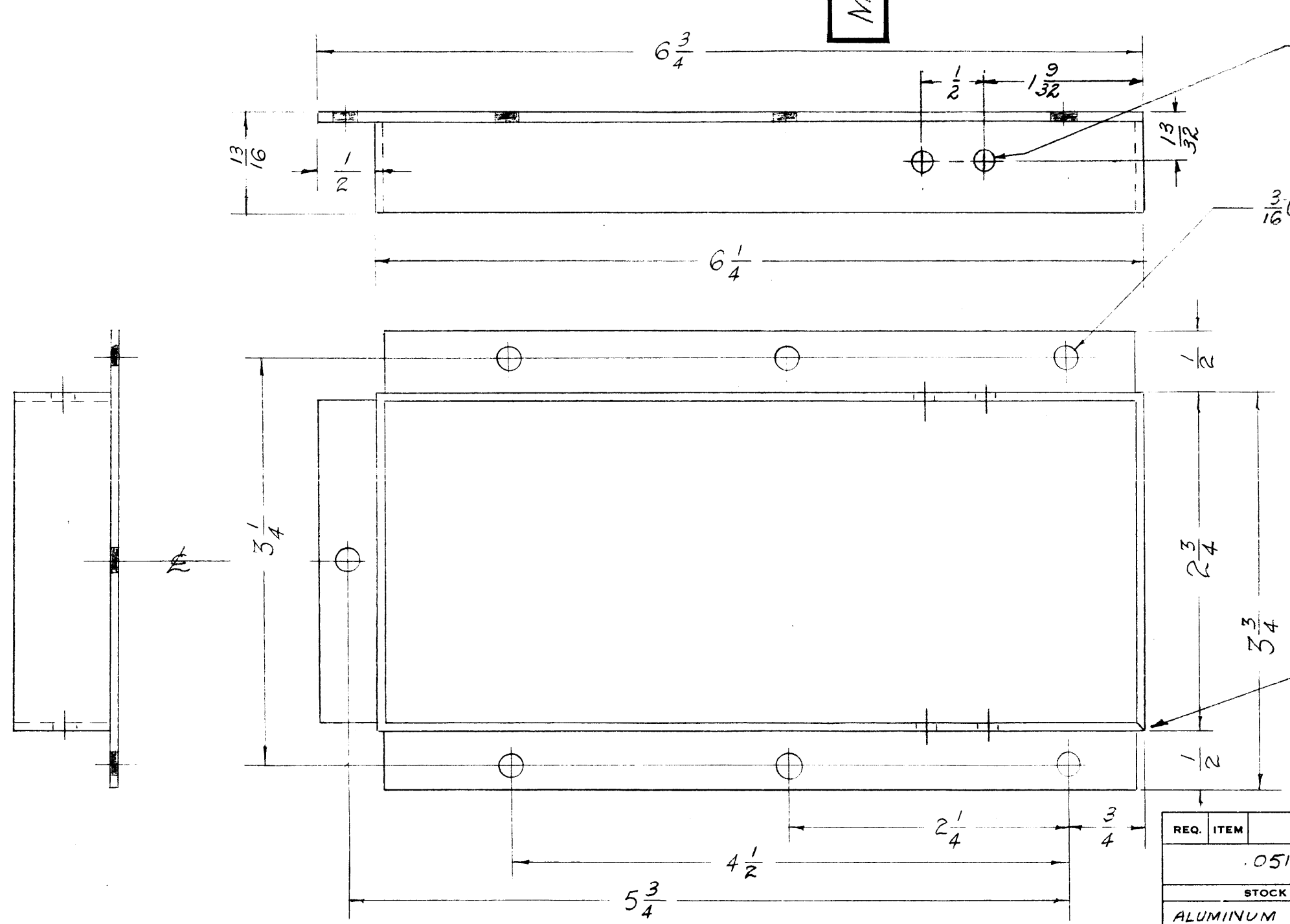
| REQ. PER UNIT | MODEL | PROJECT NO. | ASS'Y. NO. | DATE     |
|---------------|-------|-------------|------------|----------|
| 1             | RTF   |             |            | 12-20-55 |
| USED ON       |       |             |            |          |

| REQ. ITEM | PART NO.   | DESCRIPTION                  | SYMBOL  |
|-----------|------------|------------------------------|---------|
|           | .064       | THE TECHNICAL MATERIEL CORP. |         |
|           | STOCK SIZE | MAMARONECK, NEW YORK         |         |
|           | ALUMINUM   | BRACKET, DETENT              |         |
|           | MATERIAL   | MOLT.                        | RTF     |
| 52SH32    | #          | CDD 12/20/55                 | A.J.J.  |
|           |            | DRAWN                        | CHECKED |
|           |            | MECH. DES. APP.              |         |
|           |            | MS-767                       | A       |

IF IT IS FOUND DESIRABLE TO CHANGE ANY TOLERANCE OR OTHER DETAIL SPECIFIED ON THIS DRAWING NOTIFY THE PURCHASER PROMPTLY.

MAXIMUM ALLOWABLE TOLERANCES HAVE BEEN DETERMINED AND DEVIATIONS WILL BE CAUSE FOR REJECTION. REMOVE ALL BURRS AND SHARP EDGES

MS-772 B



4  
 $\frac{5}{32}$  (.312) HOLES

$\frac{3}{16}$  (.187) D.  
7 HOLES

**NOTICE TO PERSONS RECEIVING THIS DRAWING**  
THE TECHNICAL MATERIEL CORPORATION claims proprietary right in the material disclosed hereon. This drawing is issued in confidence for engineering information only and may not be reproduced or used to manufacture anything shown hereon without permission from THE TECHNICAL MATERIEL CORPORATION to the user. This drawing is loaned for mutual assistance and is subject to recall at any time.

Property of:  
THE TECHNICAL MATERIEL CORPORATION  
MAMARONECK, NEW YORK

NOTE  
WELD CORNER, GRIND SMOOTH

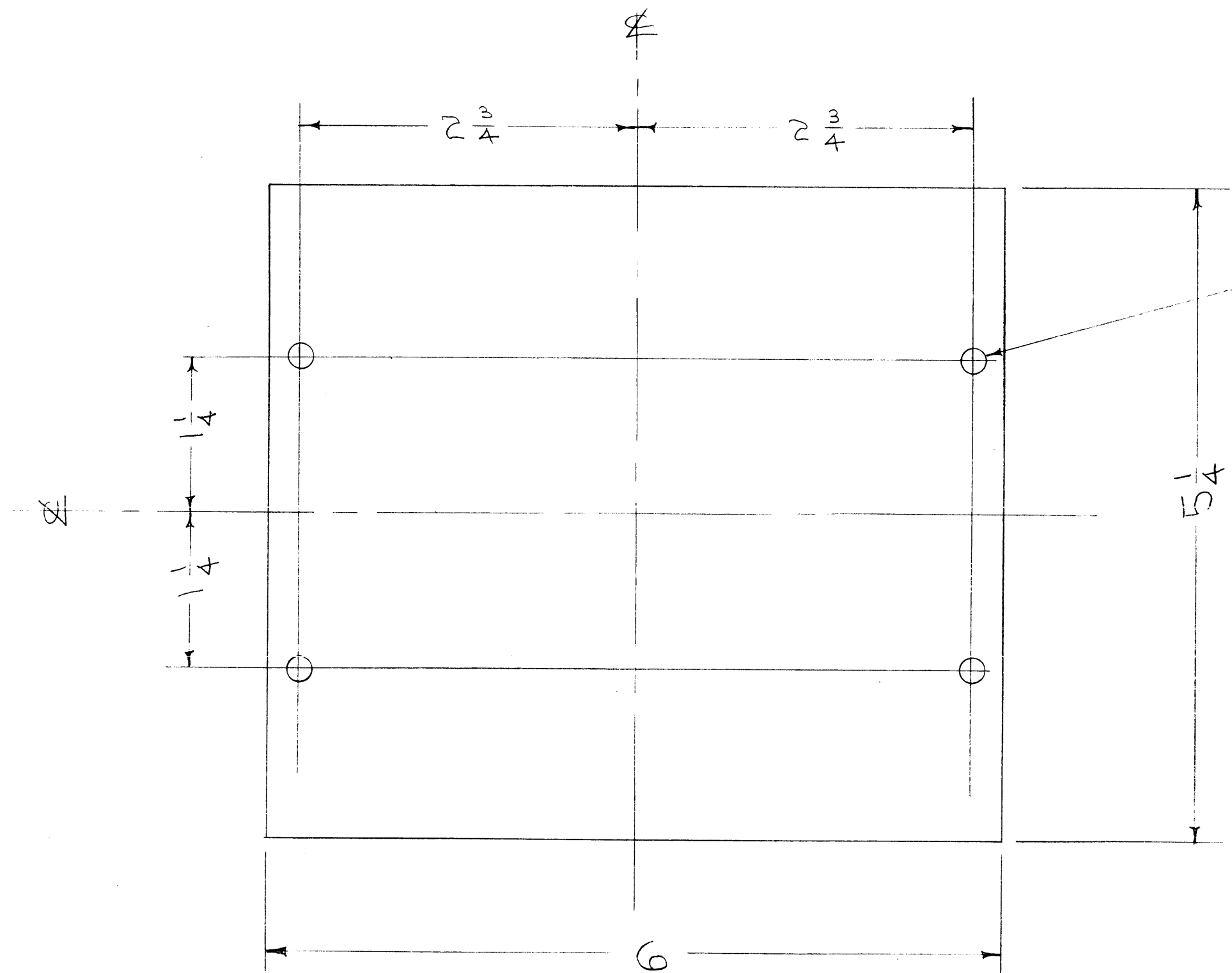
| B     | 1    | S-404 WAS S-101               | 12/4/59 | 1001    | AC     | EMN     |           |
|-------|------|-------------------------------|---------|---------|--------|---------|-----------|
| A     | 1    | ADDED (4) $\frac{5}{32}$ HOLE | 5/14/58 | 1       | one    | one     |           |
| ISSUE | ITEM | CHANGED FROM                  | DATE    | CN. NO. | DRAFTS | CHECKER | ENG. APP. |

|            |  |   |  |
|------------|--|---|--|
| TOLERANCES |  | SCALE:  |  |
| ALL OTHERS | DEC. DIM. $\pm$<br>FRAC. DIM. $\pm$ $\frac{1}{64}$<br>ANGULAR DIM. $\pm$ | DRILL, PUNCH, COMMERCIAL STOCK<br>SIZES AND MANUFACTURERS<br>TOLERANCES ARE NOT INCLUDED. |  |

| 1             | R.T.F. | 1-7-56      |            |      |
|---------------|--------|-------------|------------|------|
| REQ. PER UNIT | MODEL  | PROJECT NO. | ASS'Y. NO. | DATE |
|               |        |             |            |      |

| REQ. | ITEM     | PART NO.           | DESCRIPTION  | SYMBOL         |
|------|----------|--------------------|--|----------------|
|      |          | .051               | THE TECHNICAL MATERIEL CORP.<br>MAMARONECK, NEW YORK |                |
|      |          | STOCK SIZE         | INTAKE DUCT EXTERIOR                                 |                |
|      | ALUMINUM | ---                | POWER AMPLIFIER                                      |                |
|      |          | MATERIAL           | 13 1-7-56  | OM 1/11/56     |
|      |          | WEIGHT PER PC.     | 52S - H 32   |                |
|      |          | TYPE & TEMPER      |  |                |
|      |          | HEAT TREAT. SPEC.  |  |                |
|      |          | FINISH & SPEC. NO. | S-404 YELLOW IRIDITE                                 |                |
|      |          |                    | CHECKED  | FINAL APPROVAL |
|      |          |                    |  | MS-772 B       |

MS-777



$\frac{7}{32}$  (.218) DIA.  
4 HOLES REQ.

NOTICE TO PERSONS RECEIVING THIS DRAWING

THE TECHNICAL MATERIEL CORPORATION claims proprietary right in the material disclosed hereon. This drawing is issued in confidence for engineering information only and may not be reproduced or used to manufacture anything shown hereon without permission from THE TECHNICAL MATERIEL CORPORATION to the user. This drawing is loaned for mutual assistance and is subject to recall at any time.

Property of:  
THE TECHNICAL MATERIEL CORPORATION  
MAMARONECK, NEW YORK

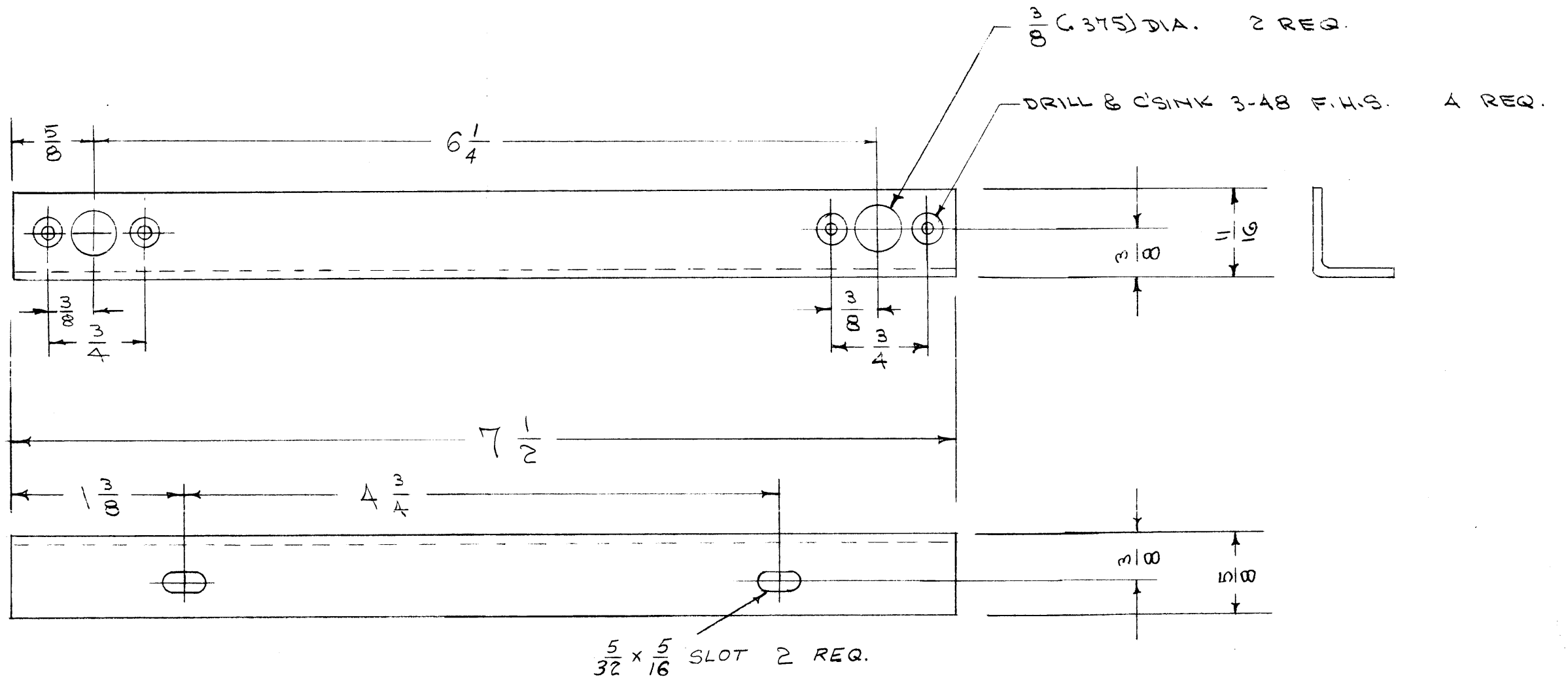
| ISSUE | ITEM | CHANGED FROM | DATE | CH. NO. | DRAFTS | CHECKER | ENG. APP. |
|-------|------|--------------|------|---------|--------|---------|-----------|
|       |      |              |      |         |        |         |           |
|       |      |              |      |         |        |         |           |
|       |      |              |      |         |        |         |           |

|                               |  |   |  |
|-------------------------------|--|---|--|
| <b>TOLERANCES</b>             |  | <b>SCALE:</b>   |  |
| DEC. DIM. $\pm$               |  | MAXIMUM ALLOWABLE TOLERANCES HAVE BEEN DETERMINED AND ANY DEVIATIONS WILL BE CAUSE FOR REJECTION. |  |
| FRAC. DIM. $\pm \frac{1}{64}$ |  | REMOVE ALL BURRS AND SHARP EDGES  |  |
| ANGULAR DIM. $\pm$            |  |   |  |

|               |        |             |            |
|---------------|--------|-------------|------------|
| REQ. PER UNIT | TR-138 | A-1201      | 1-6-56     |
|               | MODEL  | PROJECT NO. | ASS'Y. NO. |
| USED ON       |        |             |            |

| REQ. ITEM          | PART NO.          | DESCRIPTION                  |                 | SYMBOL         |
|--------------------|-------------------|------------------------------|-----------------|----------------|
|                    | .081              | THE TECHNICAL MATERIEL CORP. |                 |                |
|                    | STOCK SIZE        | MAMARONECK. NEW YORK         |                 |                |
|                    | ALUMINUM          | SUPPORT, TRANSFORMER         |                 |                |
|                    | MATERIAL          |                              |                 |                |
| 52S H32            | —                 | QTY 1/6156                   | JND             | ARB            |
| TYPE & TEMPER      | HEAT TREAT. SPEC. | DRAWN                        | CHECKED         | FINAL APPR VAL |
| S-101 CAUSTIC DIP  |                   | ZB                           | WDC             | MS-777         |
| FINISH & SPEC. NO. |                   | ELEC. DES. APP.              | MECH. DES. APP. |                |



NOTICE TO PERSONS RECEIVING THIS DRAWING

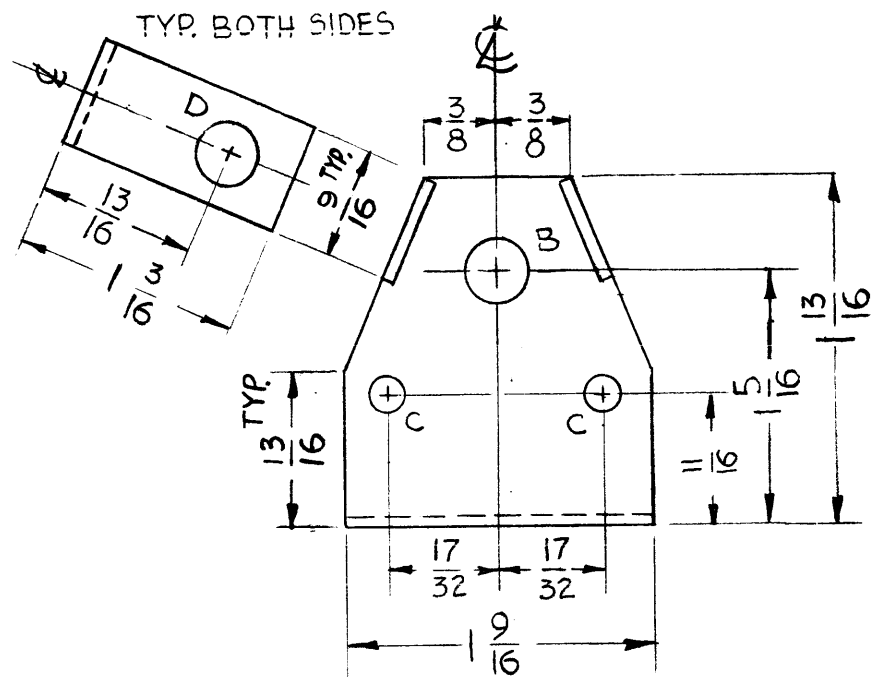
THE TECHNICAL MATERIEL CORPORATION claims proprietary right in the material disclosed hereon. This drawing is issued in confidence for engineering information only and may not be reproduced or used to manufacture anything shown hereon without permission from THE TECHNICAL MATERIEL CORPORATION to the user. This drawing is loaned for mutual assistance and is subject to recall at any time.

Property of:  
 THE TECHNICAL MATERIEL CORPORATION  
 MAMARONECK, NEW YORK

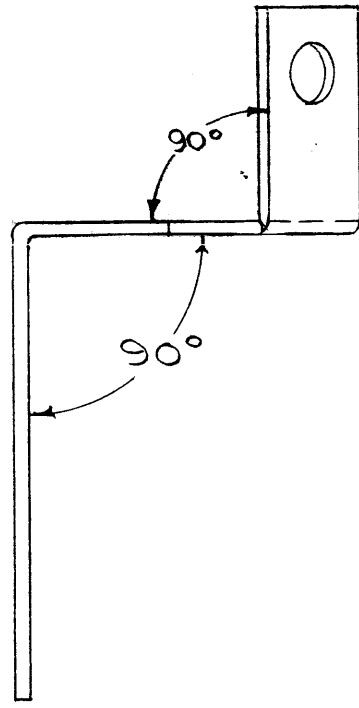
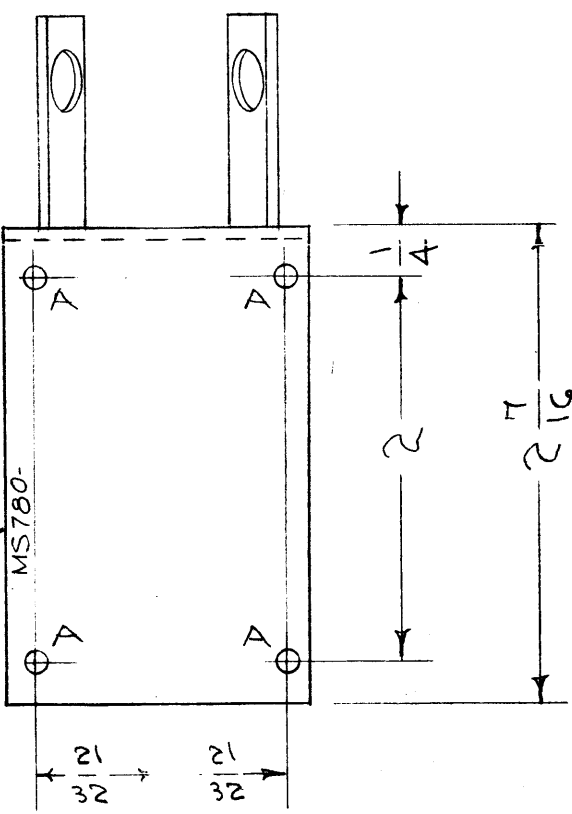
|                       |      |   |         |         |        |         |           |  |  |  |     |
|-----------------------|------|---|---------|---------|--------|---------|-----------|--|--|--|-----|
|                       |      |   |         |         |        |         |           |  |  |  |     |
| A                     | 1    | S-404 WAS S-101   | 12/4/59 | 1001    | AB     |         |           |  |  |  | EMN |
| ISSUE                 | ITEM | CHANGED FROM  | DATE    | CH. NO. | DRAFTS | CHECKER | ENG. APP. |  |  |  |     |
| TOLERANCES            |      | SCALE:  |         |         |        |         |           |  |  |  |     |
| DEC. DIM. $\pm$       |      | MAXIMUM ALLOWABLE TOLERANCES HAVE BEEN DETERMINED AND ANY DEVIATIONS WILL BE CAUSE FOR REJECTION. |         |         |        |         |           |  |  |  |     |
| FRAC. DIM. $\pm$ 1/64 |      | REMOVE ALL BURRS AND SHARP EDGES  |         |         |        |         |           |  |  |  |     |
| ANGULAR DIM. $\pm$    |      |   |         |         |        |         |           |  |  |  |     |

|               |       |             |           |          |
|---------------|-------|-------------|-----------|----------|
| 1             | RTP-2 | MAS/OSC     |           | 11-10-58 |
| 1             | RTF   |             |           | 1-10-56  |
| REQ. PER UNIT | MODEL | PROJECT NO. | ASSY. NO. | DATE     |
| USED ON       |       |             |           |          |

| REQ. ITEM            | PART NO.          | DESCRIPTION                  | SYMBOL               |                |
|----------------------|-------------------|------------------------------|----------------------|----------------|
| .064                 |                   | THE TECHNICAL MATERIEL CORP. | MAMARONECK. NEW YORK |                |
| ALUMINUM             |                   | BRACKET, COVER PLATE         | OVEN RTF             |                |
| 5052-H32             |                   | EDD-1/10/56                  | JAW                  |                |
| TYPE & TEMPER        | HEAT TREAT. SPEC. | DRAWN                        | CHECKED              | FINAL APPROVAL |
| 5-404 YELLOW IRIDITE |                   | AM 1/11/56                   |                      | MS-778 A       |
| FINISH & SPEC. NO.   |                   | ELEC. DES. APP.              | MECH. DES. APP.      |                |



- A - 1/8 (.125) DIA. 4 HOLES REQ.
- B - 1/32 (.344) " 1 " "
- C - 1/64 (.156) " 2 " "
- D - 15/64 (.234) " 2 " "



**NOTICE TO PERSONS RECEIVING THIS DRAWING**

THE TECHNICAL MATERIEL CORPORATION claims proprietary right in the material disclosed hereon. This drawing is issued in confidence for engineering information only and may not be reproduced or used to manufacture anything shown hereon without permission from THE TECHNICAL MATERIEL CORPORATION to the user. This drawing is loaned for mutual assistance and is subject to recall at any time.

Property of:  
**THE TECHNICAL MATERIEL CORPORATION**  
 MAMARONECK, NEW YORK

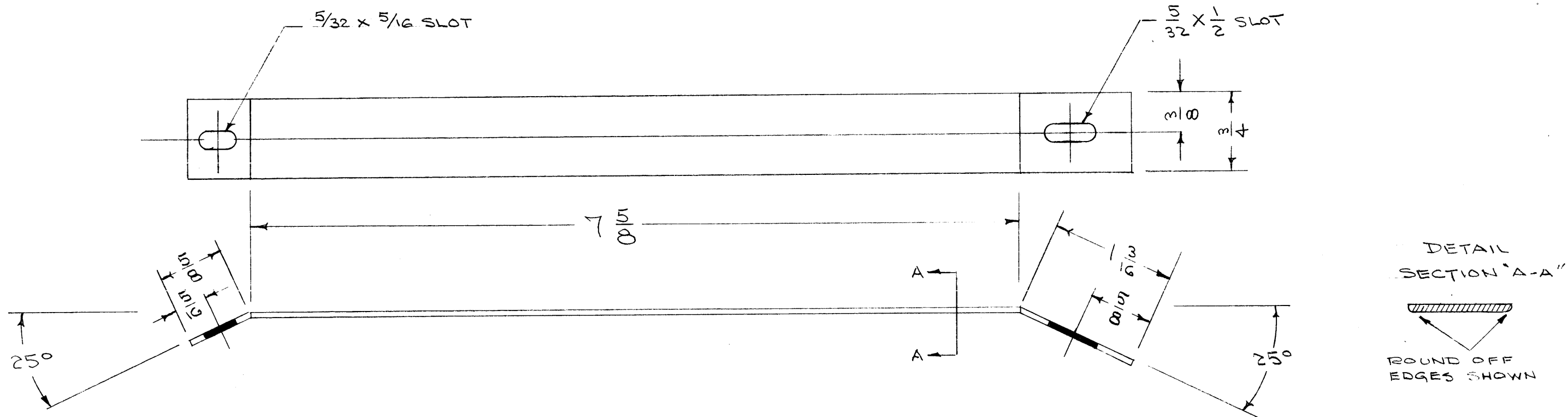
| ISSUE | ITEM | CHANGED FROM   | DATE     | CH. NO. | DRAFTS             | CHECKER            | ENG. APP.          |
|-------|------|--|----------|---------|--------------------|--------------------|--------------------|
| E     | 1    | HOLE "B" DIAM WAS 9/16 (312)<br>"B" HOLE DIM. WAS 13/16<br>W/LAT. REV. LET. ADDED TO MK# | 7-28-66  | 16654   | RME                | <i>[Signature]</i> | <i>[Signature]</i> |
| D     | 2    | 2 "B" HOLES CHNG TO "D"<br>ON HOLE LEGEND "D" ADD.                                       | 5.14.64  | 11381   | MB                 | <i>[Signature]</i> | <i>[Signature]</i> |
| C     | 1    | TOP & SIDE VIEW REVISED,<br>2 (B) HOLES ADDED  | 1-12-61  | 6175    | G.D.L.             | <i>[Signature]</i> | <i>[Signature]</i> |
| B     | 1    | S-404 WAS S-101  | 12/14/59 | 1001    | AB                 | <i>[Signature]</i> | EMN                |
| A     | 1    | B HOLE WAS 9/32<br>C HOLES ADDED   | 8/23/56  | 1       | <i>[Signature]</i> | <i>[Signature]</i> | <i>[Signature]</i> |

| TOLERANCES         |  | SCALE:        |                                   |
|--------------------|--|---------------|-----------------------------------|
| DEC. DIM. ±        |  | 1             | RTE-2 P/A                         |
| FRAC. DIM. ± 1/64  | MAXIMUM ALLOWABLE TOLERANCES HAVE BEEN DETERMINED AND ANY DEVIATIONS WILL BE CAUSE FOR REJECTION. REMOVE ALL BURRS AND SHARP EDGES | 1             | RTE                               |
| ANGULAR DIM. ± 1/2 |  | REQ. PER UNIT | MODEL PROJECT NO. ASS'Y. NO. DATE |

| REQ. PER UNIT | MODEL | PROJECT NO. | ASS'Y. NO. | DATE     |
|---------------|-------|-------------|------------|----------|
| 1             | RTE   | P/A         |            | 11-20-57 |
|               |       |             |            | 1-10-56  |
| USED ON       |       |             |            |          |

REF. DWG. LD-285

| REQ. ITEM            | PART NO.          | DESCRIPTION  | SYMBOL             |
|----------------------|-------------------|--|--------------------|
|                      | .081              | THE TECHNICAL MATERIEL CORP.<br>MAMARONECK, NEW YORK |                    |
|                      | STOCK SIZE        |  |                    |
|                      | ALUMINUM          | PLATE, NEUTRALIZER                                   |                    |
|                      | MATERIAL          | POWER AMP.   |                    |
| 52S H32              | ---               | CDR 1/10/56  | <i>[Signature]</i> |
| TYPE & TEMPER        | HEAT TREAT. SPEC. | DRAWN  | CHECKED            |
| S-404 YELLOW IRIDITE |                   | <i>[Signature]</i>                                   | <i>[Signature]</i> |
| FINISH & SPEC. NO.   | ELEC. DES. APP.   | MECH. DES. APP.                                      |                    |
|                      |                   |  | MS 780 E           |



**NOTICE TO PERSONS RECEIVING THIS DRAWING**

THE TECHNICAL MATERIEL CORPORATION claims proprietary right in the material disclosed hereon. This drawing is issued in confidence for engineering information only and may not be reproduced or used to manufacture anything shown hereon without permission from THE TECHNICAL MATERIEL CORPORATION to the user. This drawing is loaned for mutual assistance and is subject to recall at any time.

Property of:  
THE TECHNICAL MATERIEL CORPORATION  
MAMARONECK, NEW YORK

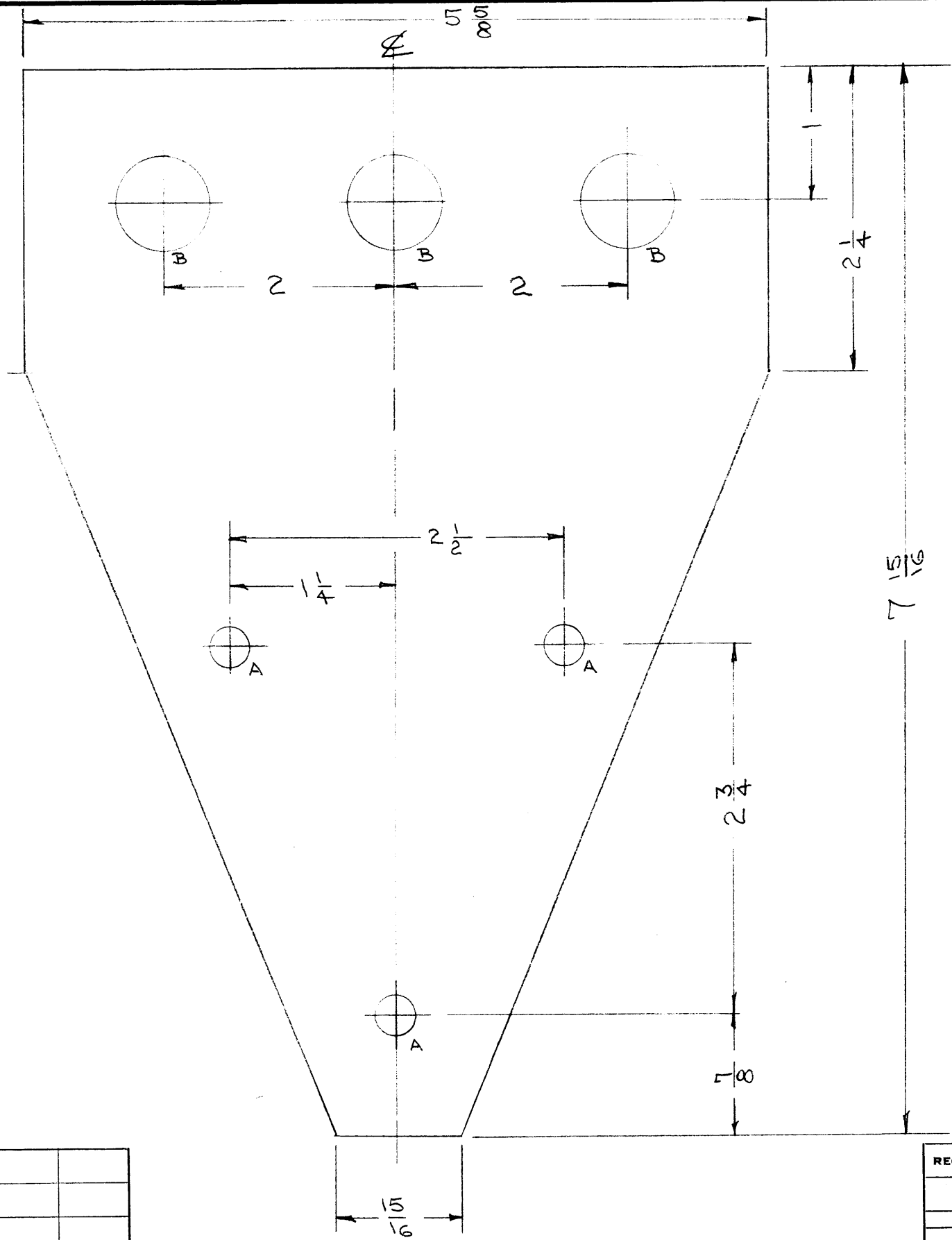
NOTE  
REMOVE ALL BURRS

| ISSUE             | ITEM | CHANGED FROM  | DATE    | CH. NO. | DRAFTS | CHECKER | ENG. APP. |
|-------------------|------|---|---------|---------|--------|---------|-----------|
| B                 | 2    | DETAIL ADDED  | 5/4/56  | 2       | JAR    | WJC     |           |
| A                 | 1    | 75/8 WAS 73/8   | 1/10/56 | 1       | PB     | JAR     | WJC       |
| TOLERANCES        |      | SCALE:  |         |         |        |         |           |
| DEC. DIM. ±       |      | MAXIMUM ALLOWABLE TOLERANCES HAVE BEEN DETERMINED AND ANY DEVIATIONS WILL BE CAUSE FOR REJECTION. |         |         |        |         |           |
| FRAC. DIM. ± 1/64 |      | REMOVED ALL BURRS AND SHARP EDGES   |         |         |        |         |           |
| ANGULAR DIM. ±    |      |   |         |         |        |         |           |

|               |        |             |
|---------------|--------|-------------|
| 2             | CAB-7  | 10-24-58    |
| 2             | CAB/FR | 1-10-56     |
| REQ. PER UNIT | MODEL  | PROJECT NO. |
|               |        | ASSY. NO.   |
|               |        | DATE        |
| USED ON       |        |             |

| REQ. ITEM | PART NO.           | DESCRIPTION                  | SYMBOL          |
|-----------|--------------------|------------------------------|-----------------|
|           | .025               | THE TECHNICAL MATERIEL CORP. |                 |
|           | STOCK SIZE         | MAMARONECK, NEW YORK         |                 |
|           | PHOSPHOR BRONZE    | GROUND WIPER                 |                 |
|           | MATERIAL           | CAB/FR.                      |                 |
|           | SPRING             | CDD. 1/10/56                 | JAR             |
|           | TYPE & TEMPER      | HEAT TREAT. SPEC.            | WJC             |
|           | SILVER PLATE .0008 | DRAWN                        | FINAL APPROVAL  |
|           | FINISH & SPEC. NO. | ELEC. DES. APP.              | MECH. DES. APP. |
|           |                    |                              | MS-781 B        |

MS-790



PROPERTY OF PERSONS RECEIVING THIS DRAWING

THE TECHNICAL MATERIEL CORPORATION claims proprietary right in the material disclosed hereon. This drawing is issued in confidence for engineering information only and may not be reproduced or used to manufacture anything shown hereon without permission from THE TECHNICAL MATERIEL CORPORATION to the user. This drawing is loaned for mutual assistance and is subject to recall at any time.

Property of:  
 THE TECHNICAL MATERIEL CORPORATION  
 MAMARONECK, NEW YORK

LEGEND

A = 9/32 (.281) D      3 HOLES  
 B = 5/8 (.625) D      3 HOLES

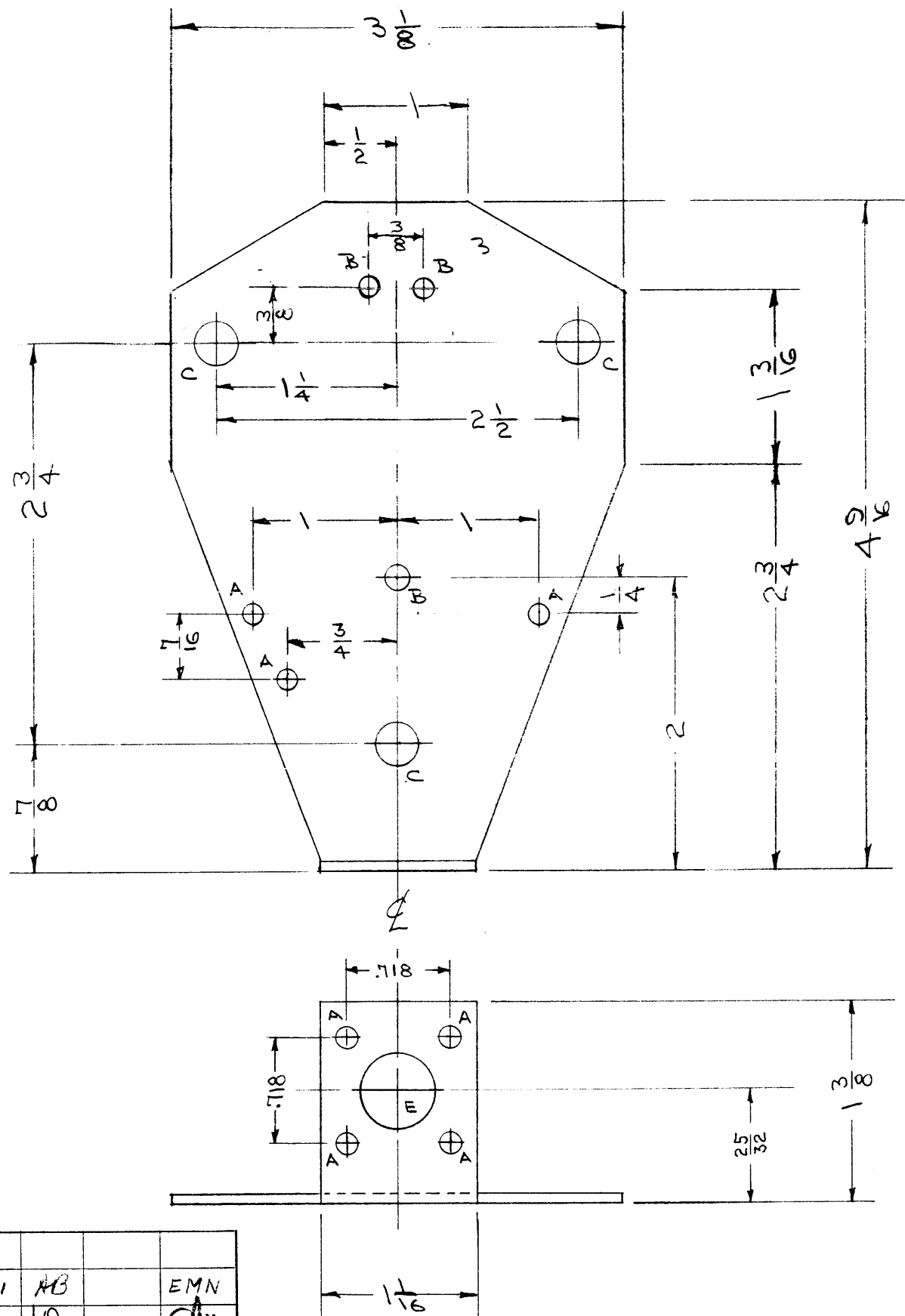
| ISSUE          | ITEM | CHANGED FROM  | DATE | CH. NO. | DRAFTS | CHECKER | ENG. APP. |
|----------------|------|---|------|---------|--------|---------|-----------|
|                |      |   |      |         |        |         |           |
| TOLERANCES     |      | SCALE:  |      |         |        |         |           |
| DEC. DIM. ±    |      | MAXIMUM ALLOWABLE TOLERANCES HAVE BEEN DETERMINED AND ANY DEVIATIONS WILL BE CAUSE FOR REJECTION. |      |         |        |         |           |
| FRAC. DIM. ±   |      | REMOVE ALL BURRS AND SHARP EDGES  |      |         |        |         |           |
| ANGULAR DIM. ± |      |   |      |         |        |         |           |

| REQ. PER UNIT | MODEL  | PROJECT NO. | ASS'Y. NO. | DATE    |
|---------------|--------|-------------|------------|---------|
| 1             | A-1125 |             |            | 1/17/56 |
| 1             | DAC-8  |             |            | 1/17/56 |
| USED ON       |        |             |            |         |

| REQ. ITEM | PART NO.            | DESCRIPTION                  |                 |                | SYMBOL |
|-----------|---------------------|------------------------------|-----------------|----------------|--------|
|           | 10 GA               | THE TECHNICAL MATERIEL CORP. |                 |                |        |
|           | STOCK SIZE          | MAMARONECK, NEW YORK         |                 |                |        |
|           | STEEL               | CASE, MOUNTING PLATE         |                 |                |        |
|           | MATERIAL            |                              |                 |                |        |
|           |                     | JA We                        | ess/hob         | WJC            |        |
|           |                     | DRAWN                        | CHECKED         | FINAL APPROVAL |        |
|           | GALVANIZED, HOT DIP |                              | WJC             | MS-790         |        |
|           | FINISH & SPEC. NO.  | ELEC. DES. APP.              | MECH. DES. APP. |                |        |



MS-791 C



**NOTICE TO PERSONS RECEIVING THIS DRAWING**

THE TECHNICAL MATERIEL CORPORATION claims proprietary right in the material disclosed hereon. This drawing is issued in confidence for engineering information only and may not be reproduced or used to manufacture anything shown hereon without permission from THE TECHNICAL MATERIEL CORPORATION to the user. This drawing is loaned for mutual assistance and is subject to recall at any time.

Property of:  
**THE TECHNICAL MATERIEL CORPORATION**  
 MAMARONECK, NEW YORK

**LEGEND:**

- A = 1/8 (.125) D      7 HOLES
- B = 1/64 (.156) D      3 "
- C = 9/32 (.281) D      3 "
- E = 1/2 (.500) D      1 "

| ISSUE | ITEM | CHANGED FROM                            | DATE     | CH. NO. | DRAFTS | CHECKER | ENG. APP.          |
|-------|------|---|----------|---------|--------|---------|--------------------|
| C     | 1    | S-404 WAS S-101                         | 12/14/54 | 1001    | AB     |         | EMN                |
| B     | 1    | Two "B" Holes Relocated<br>3/8 was 1/2  | 10/2/56  | #       | JR     |         | <i>[Signature]</i> |
| A     | 2    | "B" HOLES WERE 3/4" O.C.<br>3/8 WAS 3/8 | 5/21/56  | 1       | JR     |         | <i>[Signature]</i> |

TOLERANCES

SCALE:

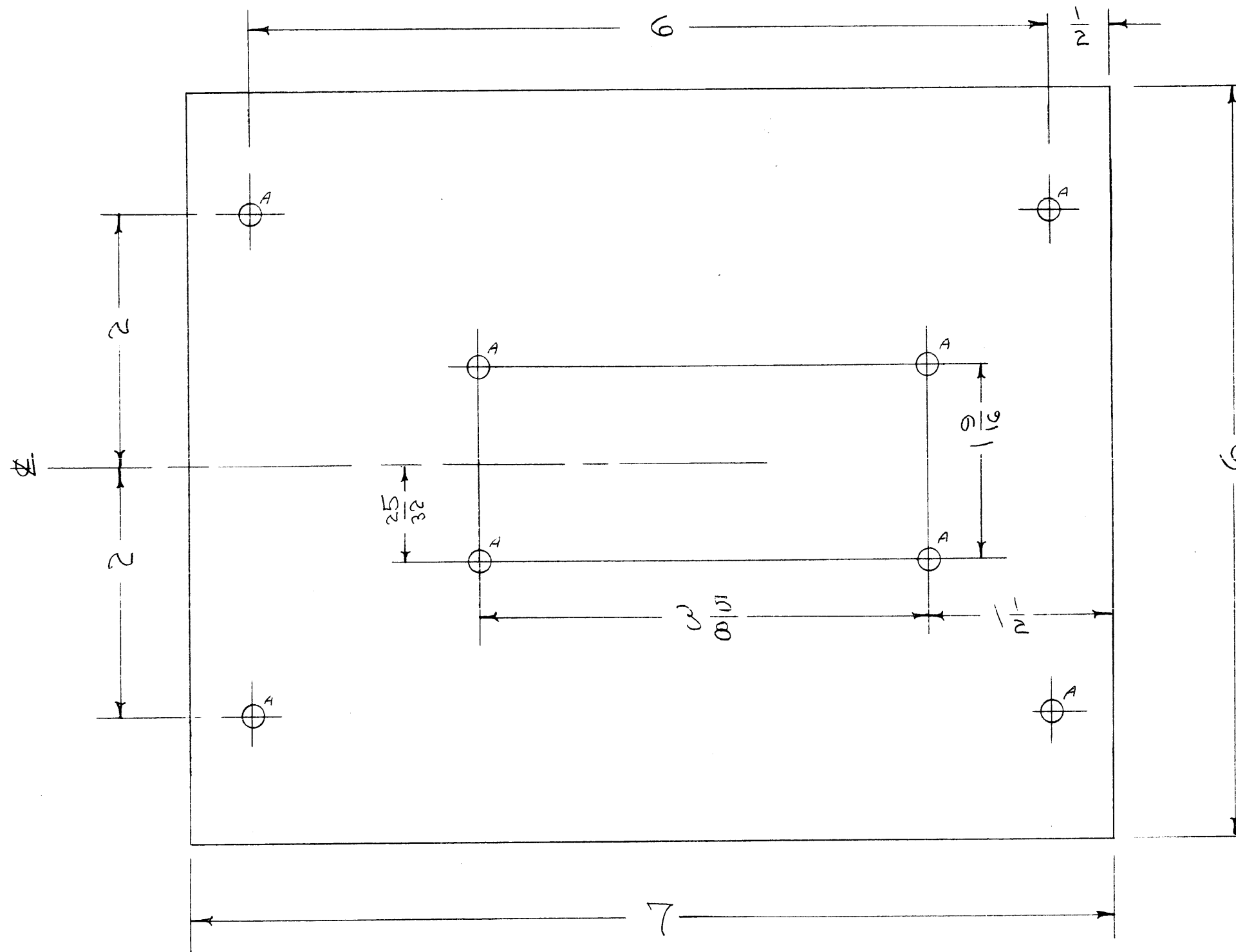
DEC. DIM. ±  
 FRAC. DIM. ±  
 ANGULAR DIM. 1/4°

MAXIMUM ALLOWABLE TOLERANCES HAVE BEEN DETERMINED AND ANY DEVIATIONS WILL BE CAUSE FOR REJECTION. REMOVE ALL BURRS AND SHARP EDGES

|               |         |             |           |         |
|---------------|---------|-------------|-----------|---------|
| 1             | DAC-8   |             |           | 1/17/56 |
| REQ. PER UNIT | MODEL   | PROJECT NO. | ASSY. NO. | DATE    |
|               | USED ON |             |           |         |

| REQ. ITEM | PART NO.             | DESCRIPTION  | SYMBOL                      |
|-----------|----------------------|--|-----------------------------|
|           | .064                 | THE TECHNICAL MATERIEL CORP.<br>MAMARONECK, NEW YORK |                             |
|           | STOCK SIZE           | PLATE, TRANSFORMER MTG.                              |                             |
|           | ALUMINUM             | DAC-8  |                             |
|           | MATERIAL             |  |                             |
| 52S-432   |                      | <i>[Signature]</i> <i>[Signature]</i>                |                             |
|           | TYPE & TEMPER        | HEAT TREAT. SPEC.                                    | DRAWN                       |
|           | 9-404 YELLOW IRIDITE |  | CHECKED                     |
|           | FINISH & SPEC. NO.   |  | FINAL APPROVAL              |
|           |                      |  | <i>[Signature]</i> MS-791 C |
|           |                      | ELEC. DES. APP.                                      | MECH. DES. APP.             |

MS-795 B



HOLES  
A = 3/16 (.187) D. 8 REQ.

NOTICE TO PERSONS RECEIVING THIS DRAWING

THE TECHNICAL MATERIEL CORPORATION claims proprietary right in the material disclosed hereon. This drawing is issued in confidence for engineering information only and may not be reproduced or used to manufacture anything shown hereon without permission from THE TECHNICAL MATERIEL CORPORATION to the user. This drawing is loaned for mutual assistance and is subject to recall at any time.

Property of:  
THE TECHNICAL MATERIEL CORPORATION  
MAMARONECK, NEW YORK

TOP OF PLATE

| ISSUE | ITEM | CHANGED FROM    | DATE     | CH. NO. | DRAFTS | CHECKER | ENG. APP. |
|-------|------|-----------------|----------|---------|--------|---------|-----------|
| B     | 1    | S-404 WAS S-101 | 12/14/59 | 1001    | #6     |         | EMN       |
| A     | 1    | 7 WAS 7 1/2     | 12/3/56  | 1       | 16     | JAD     | WJC       |

|                   |  |   |  |
|-------------------|--|---|--|
| TOLERANCES        |  | SCALE:  |  |
| DEC. DIM. ±       |  | MAXIMUM ALLOWABLE TOLERANCES HAVE BEEN DETERMINED AND ANY DEVIATIONS WILL BE CAUSE FOR REJECTION. |  |
| FRAC. DIM. ± 1/64 |  | REMOVE ALL BURRS AND SHARP EDGES  |  |
| ANGULAR DIM. ±    |  |   |  |

|               |         |             |            |         |
|---------------|---------|-------------|------------|---------|
| 1             | TRC-500 | 437         | A-1222     | 1-18-56 |
| REQ. PER UNIT | MODEL   | PROJECT NO. | ASS'Y. NO. | DATE    |
| USED ON       |         |             |            |         |

| REQ. ITEM            | PART NO.          | DESCRIPTION                  | SYMBOL   |
|----------------------|-------------------|------------------------------|----------|
|                      | .064              | THE TECHNICAL MATERIEL CORP. |          |
|                      | STOCK SIZE        | MAMARONECK, NEW YORK         |          |
|                      | ALUMINUM          | XFMR MOUNTING PLATE          |          |
|                      | MATERIAL          | TRC-500                      |          |
| 525 H 32             |                   | CDD Y18/30                   | JAD      |
| TYPE & TEMPER        | HEAT TREAT. SPEC. | DRAWN                        | CHECKED  |
| S-404 YELLOW IRIDITE |                   | WJC                          | WJC      |
| FINISH & SPEC. NO.   | ELEC. DES. APP.   | MECH. DES. APP.              |          |
|                      |                   |                              | MS-795 B |