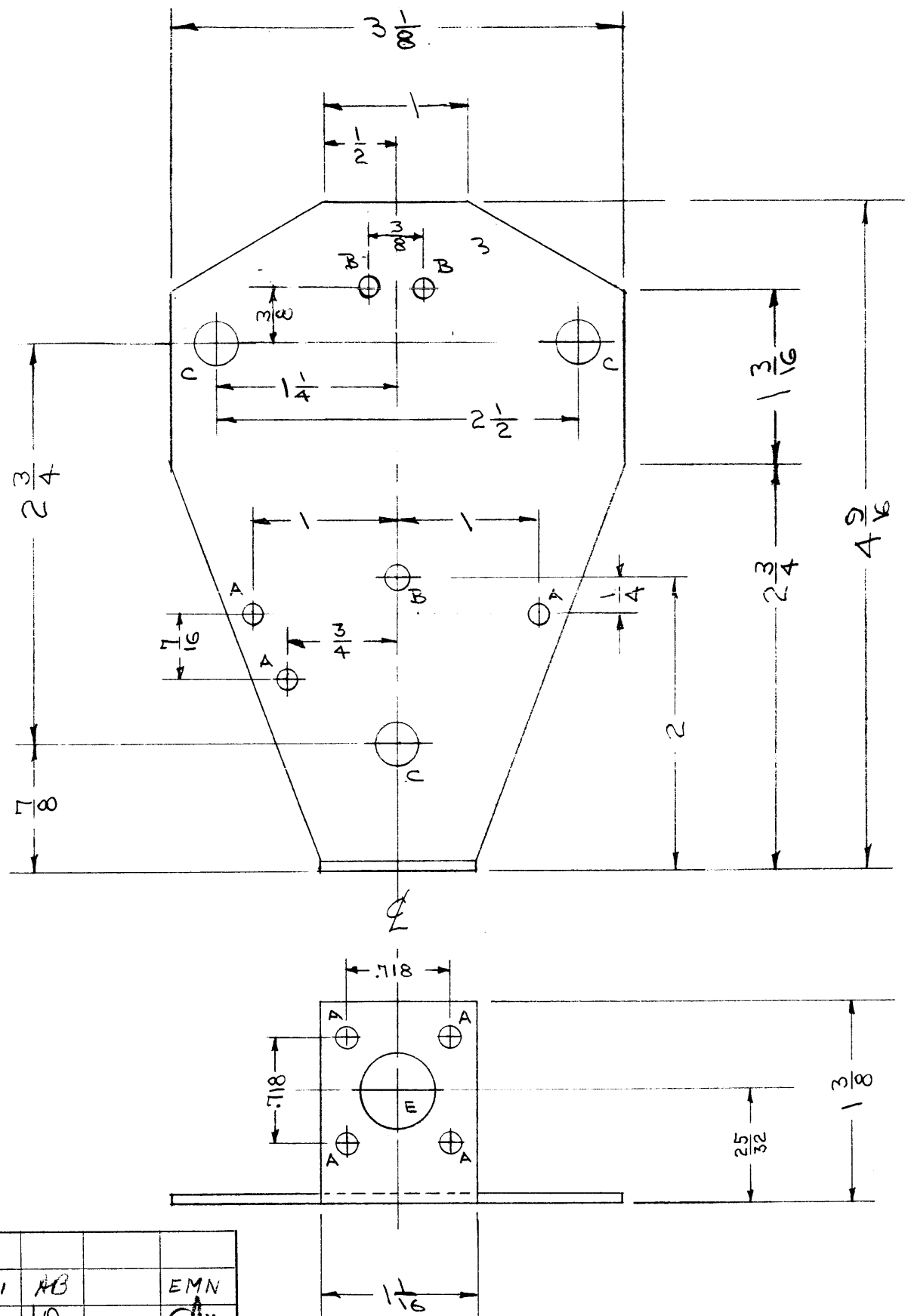


MS-791 C



**NOTICE TO PERSONS RECEIVING THIS DRAWING**

THE TECHNICAL MATERIEL CORPORATION claims proprietary right in the material disclosed hereon. This drawing is issued in confidence for engineering information only and may not be reproduced or used to manufacture anything shown hereon without permission from THE TECHNICAL MATERIEL CORPORATION to the user. This drawing is loaned for mutual assistance and is subject to recall at any time.

Property of:  
**THE TECHNICAL MATERIEL CORPORATION**  
 MAMARONECK, NEW YORK

**LEGEND:**

- A = 1/8 (.125) D      7 HOLES
- B = 1/64 (.156) D      3 "
- C = 9/32 (.281) D      3 "
- E = 1/2 (.500) D      1 "

ISSUE	ITEM	CHANGED FROM	DATE	CH. NO.	DRAFTS	CHECKER	ENG. APP.
C	1	S-404 WAS S-101	12/14/54	1001	AB		EMN
B	1	Two "B" Holes Relocated 3/8 was 1/2	10/2/56	#	JR		<i>Alm</i>
A	2	"B" HOLES WERE 3/4" O.C. 3/8 WAS 3/8	5/21/56	1	JR		<i>Alm</i>

TOLERANCES

SCALE:

DEC. DIM. ±  
 FRAC. DIM. ±  
 ANGULAR DIM. 1/4°

MAXIMUM ALLOWABLE TOLERANCES HAVE BEEN DETERMINED AND ANY DEVIATIONS WILL BE CAUSE FOR REJECTION. REMOVE ALL BURRS AND SHARP EDGES

1	DAC-8			1/17/56
REQ. PER UNIT	MODEL	PROJECT NO.	ASSY. NO.	DATE
	USED ON			

REQ. ITEM	PART NO.	DESCRIPTION	SYMBOL
	.064	THE TECHNICAL MATERIEL CORP. MAMARONECK, NEW YORK	
	STOCK SIZE		
	ALUMINUM	PLATE, TRANSFORMER MTG.	
	MATERIAL	DAC-8	
52S-432		<i>JR</i>	<i>WDC</i>
	TYPE & TEMPER	HEAT TREAT. SPEC.	DRAWN
	9-404 YELLOW IRIDITE		CHECKED
	FINISH & SPEC. NO.		FINAL APPROVAL
		ELEC. DES. APP.	MECH. DES. APP.
			<i>WDC</i> MS-791 C