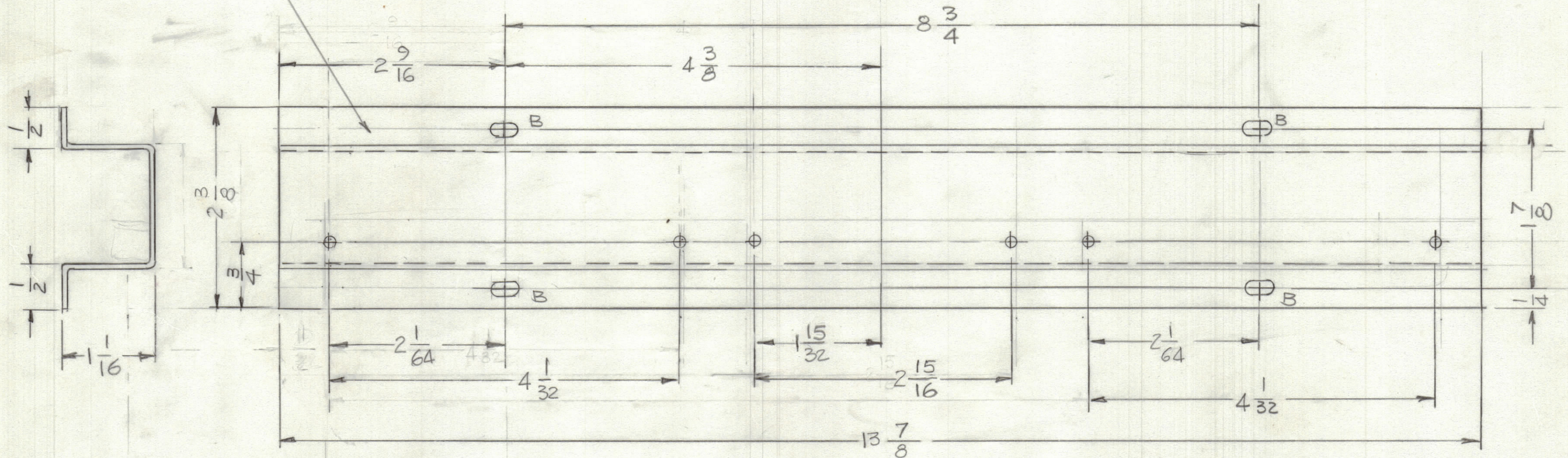


REVISIONS						
ZONE	LTR	DESCRIPTION	DATE	E.M.N.NO	DRAFT	CHKD APPD
	Ø	ORIG. RELEASE FOR PRODUCTION	1-5-83		GDL	

HOLES  
 A - 9/64 DIA 6 REQ'D  
 B - 11/64 X 11/32 4 REQ'D

1500  
 250  
 250

MARK TMC P/NO. 1/8  
 HIGH GOTHIC W/LATEST  
 REV. LETTER



2 9 37 5 -

UNLESS OTHERWISE SPECIFIED:  
 1. USE MATERIAL THICKNESS FOR MAXIMUM RADIUS ON ALL BENDS.  
 2. ALL ANGULAR BENDS 90 DEGREES.  
 3. REMOVE ALL BURRS AND SHARP EDGES.

1	AX 5255	
QTY / UNIT	MODEL USED ON	ASS'Y NO.
APPLICATION		
	CODE	

NOTICE TO PERSONS RECEIVING THIS DRAWING  
 THE TECHNICAL MATERIEL CORPORATION claims proprietary right in the material disclosed hereon. This drawing is issued in confidence for engineering information only and may not be reproduced or used to manufacture anything shown hereon without permission from THE TECHNICAL MATERIEL CORPORATION to the user. This drawing is loaned for mutual assistance and is subject to recall at any time.

UNLESS OTHERWISE SPECIFIED DIMENSIONS ARE IN INCHES AND INCLUDE CHEMICALLY APPLIED OR PLATED FINISHES

TOLERANCES ON  
 DECIMALS .X ± .05  
 .XX ± .01  
 .XXX ± .005  
 FRACTIONS ± 1/64  
 ANGLES ± 0° -30'

MATERIAL .064 THK  
 ALUM 5052-H32  
 FINISH S404  
 YEL. IRIDITE

QTY. REQ.	ITEM	PART NO.	DESCRIPTION	SYMBOL
	ENG. J. DE MARCO		LIST OF MATERIAL	
	FINAL APPROVAL <i>J. De Marco</i>	DATE 2-2-83	THE TECHNICAL MATERIEL CORP. MAMARONECK, NEW YORK	
	MECH. DES. G.D.L.	DATE 1-5-83		
	ELECT. DES.	DATE		
	CHECKED	DATE		
	DRAWN G.D.L.	DATE 8-3-82	BRACKET MTG CONN.	
			SIZE C	CODE IDENT. NO. 82679
			DWG NO. MS 7095	ISSUE Ø
			SCALE 1:1	SHEET OF