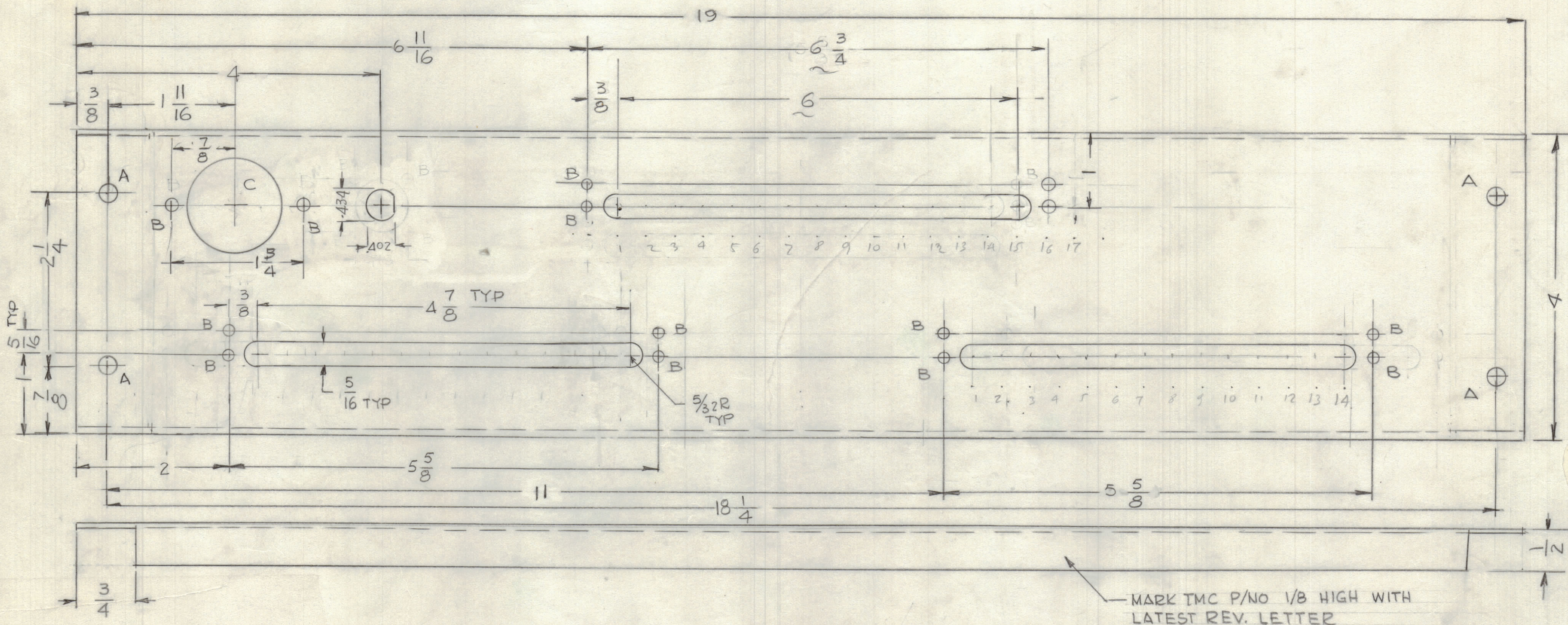


HOLE -  
 A = 1/4 DIA  
 B = 11/64 DIA  
 C = 1 1/4 DIA

4 REQ'D  
 14 REQ'D

REVISIONS						
ZONE	LTR	DESCRIPTION	DATE	E.M.N.NO	DRAFT	CHKD APPD
	Ø	ORIGINAL RELEASE FOR PRODUCTION	3/20/83			



- UNLESS OTHERWISE SPECIFIED:
- USE MATERIAL THICKNESS FOR MAXIMUM RADIUS ON ALL BENDS.
  - ALL ANGULAR BENDS 90 DEGREES.
  - REMOVE ALL BURRS AND SHARP EDGES.
  - MOUNT INSERTS AFTER FINISHING.

QTY / UNIT	MODEL USED ON	ASS'Y NO.
	SYM - 5212	
APPLICATION		
CODE		

NOTICE TO PERSONS RECEIVING THIS DRAWING  
 THE TECHNICAL MATERIEL CORPORATION claims proprietary right in the material disclosed hereon. This drawing is issued in confidence for engineering information only and may not be reproduced or used to manufacture anything shown hereon without permission from THE TECHNICAL MATERIEL CORPORATION to the user. This drawing is loaned for mutual assistance and is subject to recall at any time.

REF: LD 3137

UNLESS OTHERWISE SPECIFIED DIMENSIONS ARE IN INCHES AND INCLUDE CHEMICALLY APPLIED OR PLATED FINISHES

TOLERANCES ON

DECIMALS	FRACTIONS
.X ± .05	± 1/64
.XX ± .01	ANGLES
.XXX ± .005	± 0° -30'

MATERIAL 064 THK ALUM: 5052-H32

FINISH S404 VEL. IRIDITE

QTY. REQ.	ITEM	PART NO.	DESCRIPTION	SYMBOL
LIST OF MATERIAL				
THE TECHNICAL MATERIEL CORP. MAMARONECK, NEW YORK				
INTERFACE HF RECEIVER				
FINAL APPROVAL	DATE	MECH. DES.		
ELECT. DES.	DATE	CHECKED		
DRAWN	DATE	DRAWN		
G.D.L.	4-10-82			
SIZE	CODE IDENT.NO.	DWG NO.	ISSUE	
C	82679	MS 7079	Ø	
SCALE 1:1	SHEET			OF