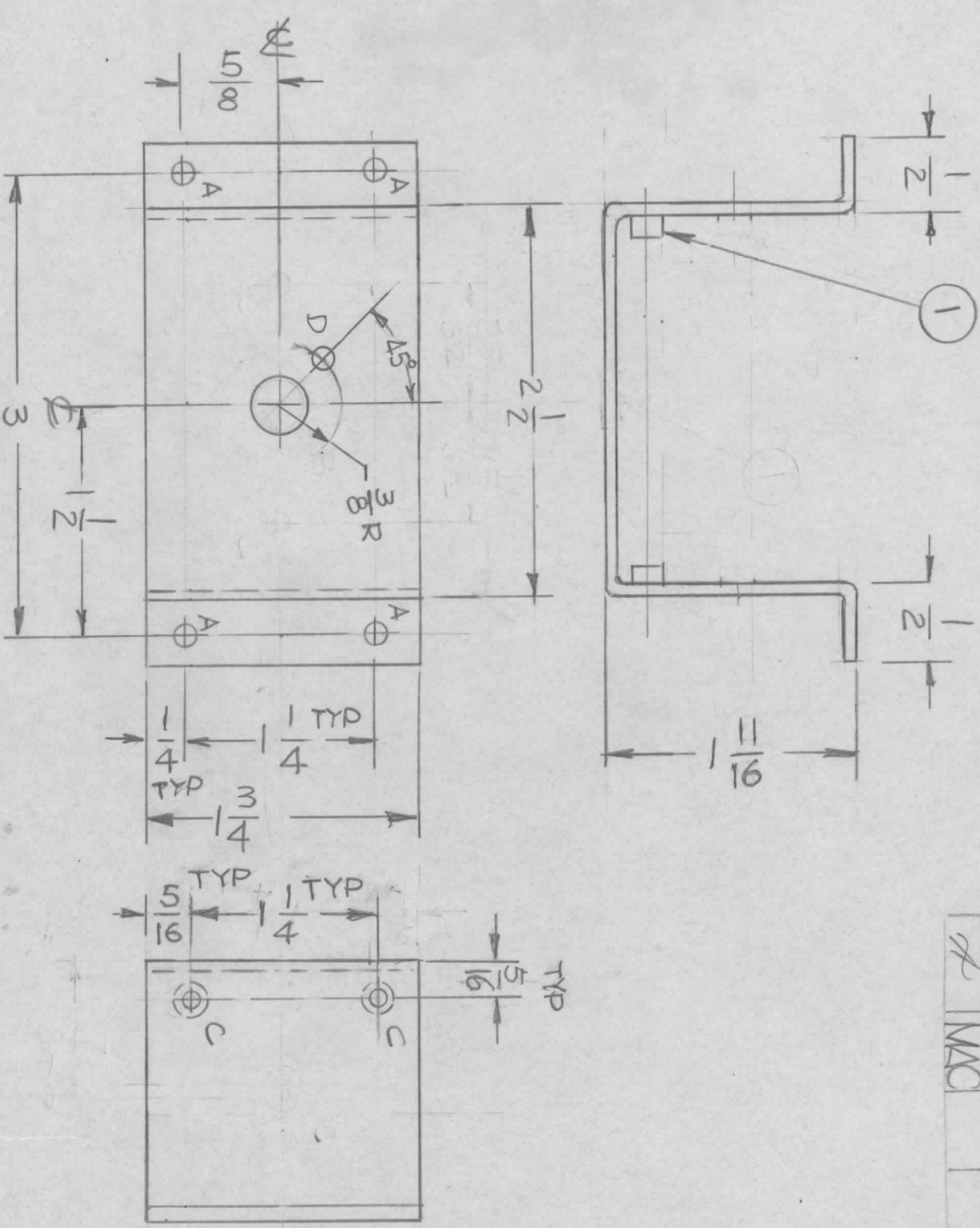


REVISIONS				DATE	APPROVED
EMN. NO.	DRAFT	CHKD	ZONE	LTR	DESCRIPTION
	G.D.L.			X	D HOLE ADD.
	M.C.			Ø	ORIGINAL RELEASE FOR PRODUCTION
					10-6-78
					9-21-79
					FB



HOLES  
 A - 11/64 DIA 4 REQ'D  
 B - 3/8 DIA 1 REQ'D  
 C - .161 - .164 DIA 4 REQ'D  
 D - 9/64 DIA 1 REQ'D

REQ'D ITEM	PART NUMBER	DESCRIPTION	SYM.
2	1	NT129.0440-4 NUT, ROUND.	

LIST OF MATERIAL  
 THE TECHNICAL MATERIEL CORP.  
 MAMARONECK, NEW YORK

BRACKET, MTG. WAFER

UNLESS OTHERWISE SPECIFIED DIMENSIONS ARE IN INCHES AND INCLUDE CHEMICALLY APPLIED OR PLATED FINISHES		FINAL APPROVAL	
MECH. DES.	DATE	<i>[Signature]</i>	DATE
ELECT. DES.	DATE		DATE
CHECKED	DATE		DATE
DRAWN	DATE	G.D.L.	5-25-78

QTY / UNIT	MODEL USED ON	ASSY. NO.
1	MFT-10K/3	AS166

APPLICATION CODE

NOTICE TO PERSONS RECEIVING THIS DRAWING  
 THE TECHNICAL MATERIEL CORPORATION claims proprietary right in the material disclosed hereon. This drawing is issued in confidence for engineering information only and may not be reproduced or used to manufacture anything shown hereon without permission from THE TECHNICAL MATERIEL CORPORATION to the user. This drawing is loaned for mutual assistance and is subject to recall at any time.

DECIMALS	TOLS.	FRACTIONS	ANGLES
.X ± .05	.01	1/64	90° - 30'
.XX ± .01			
.XXX ± .005			

MATERIAL .081 THK  
 AL ALY 5052-H32  
 FINISH 5404  
 YEL IDIDITE

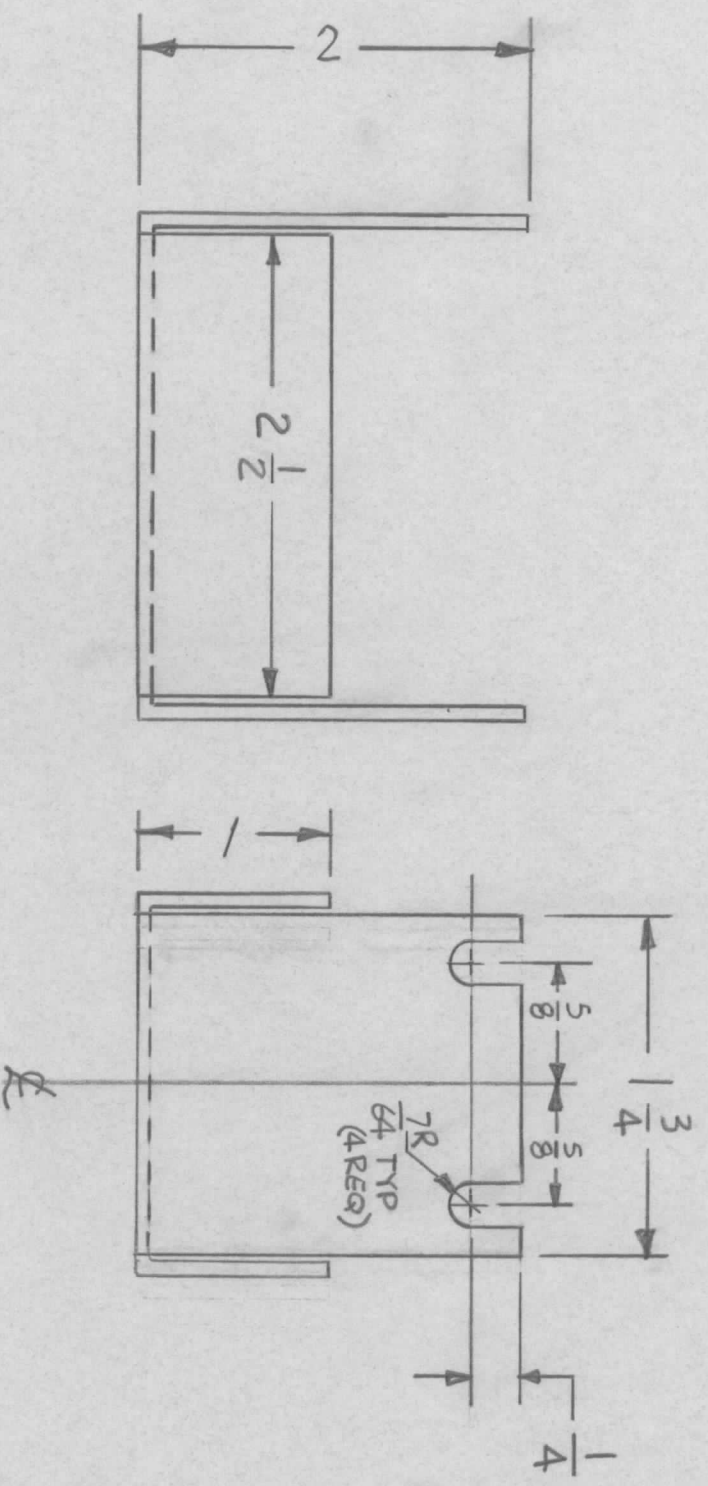
SIZE	CODE IDENT. NO.	DWG NO.	ISSUE
B	82679	MS 6900	Ø

SCALE 1:1 SHEET OF

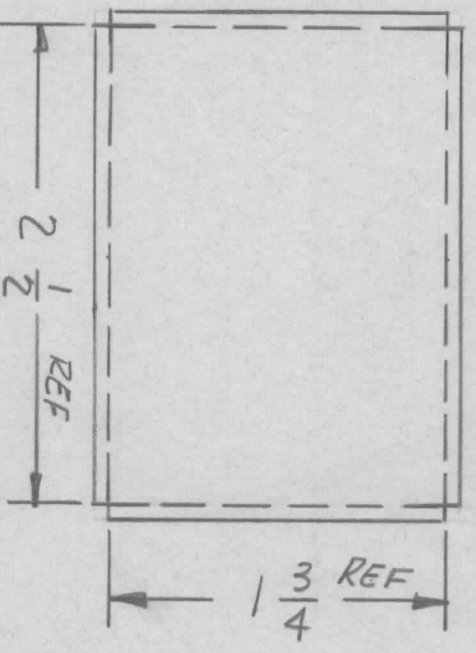
- UNLESS OTHERWISE SPECIFIED:
1. USE MATERIAL THICKNESS FOR MAXIMUM RADIUS ON ALL BENDS.
  2. ALL ANGULAR BENDS 90 DEGREES.
  3. REMOVE ALL BURRS AND SHARP EDGES.
  4. MOUNT INSERTS AFTER FINISHING.



REVISIONS					
EM.N. NO.	DRAFT	CHKD	ZONE	LTR	
DESCRIPTION				DATE	APPROVED
ORIGINAL RELEASE FOR PRODUCTION				5-16-83	



- UNLESS OTHERWISE SPECIFIED:
1. USE MATERIAL THICKNESS FOR MAXIMUM RADIUS ON ALL BENDS.
  2. ALL ANGULAR BENDS 90 DEGREES.
  3. REMOVE ALL BURRS AND SHARP EDGES.
  4. MOUNT INSERTS AFTER FINISHING.



REQ'D	ITEM	PART NUMBER	DESCRIPTION	SYM.
LIST OF MATERIAL				

**THE TECHNICAL MATERIEL CORP.**  
MAMARONECK, NEW YORK

**BRACKET, WAFER SUPPORT**

QTY / UNIT	1	MODEL USED ON	MFTA-10K	ASS'Y NO.	AS166-1
APPLICATION		CODE			

UNLESS OTHERWISE SPECIFIED DIMENSIONS ARE IN INCHES AND INCLUDE CHEMICALLY APPLIED OR PLATED FINISHES	FINAL APPROVAL	DATE
MECH. DES.		
ELECT. DES.		
CHECKED		
DRAWN	<i>R. Vano</i>	DATE
		5/14/83

**NOTICE TO PERSONS RECEIVING THIS DRAWING**  
THE TECHNICAL MATERIEL CORPORATION claims proprietary right in the material disclosed hereon. This drawing is issued in confidence for engineering information only and may not be reproduced or used to manufacture anything shown hereon without permission from THE TECHNICAL MATERIEL CORPORATION to the user. This drawing is loaned for mutual assistance and is subject to recall at any time.

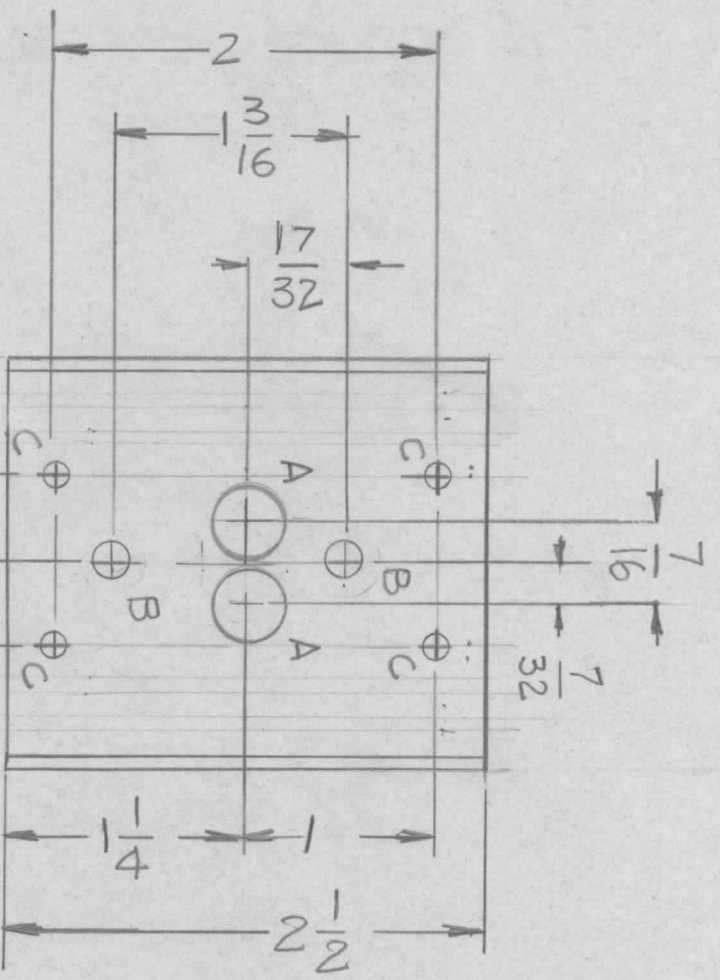
DECIMALS	FRACTIONS
.X ± .05	1/64
.XX ± .01	ANGLES
.XXX ± .005	0° - 30'

MATERIAL	AL-ALY 5052-H32
FINISH	S404
	YEL IRIDITE

SIZE	CODE IDENT. NO.	DWG. NO.	ISSUE
B	82679	MS6905	Ø
SCALE	SHEET		OF

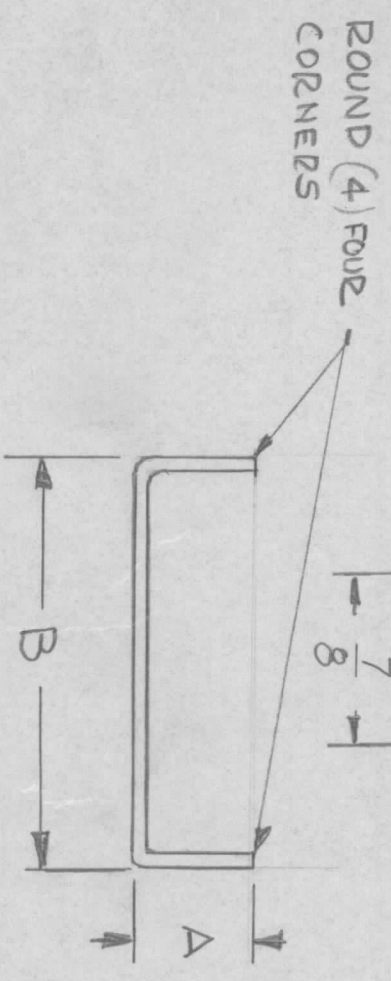


REVISIONS				DATE	APPROVED
EM.N. NO.	DRAFT	CHKD	ZONE	LTR	DESCRIPTION



HOLE  
 A - 3/8 DIA 2 REQ'D  
 B - 3/16 DIA 2 REQ'D  
 C - 1/8 DIA 4 REQ'D

TMC P/NO	DIMENSION	
	A	B
MS 6915-1	5/8	2 1/8
MS 6915-2	9/16	1 3/4
MS 6915-3	1/2	1 3/8



FINISH:  
 S404 YEL IRIDITE  
 PLATE

QTY / UNIT	1	MODEL USED ON	DPC	ASSY NO.	
APPLICATION					
CODE					

NOTICE TO PERSONS RECEIVING THIS DRAWING  
 THE TECHNICAL MATERIEL CORPORATION claims proprietary right in the material disclosed herein. This drawing is issued in confidence for engineering information only and may not be reproduced or used to manufacture anything shown hereon without permission from THE TECHNICAL MATERIEL CORPORATION to the user. This drawing is loaned for mutual assistance and is subject to recall at any time.

REQ'D	ITEM	PART NUMBER	DESCRIPTION	SYM.

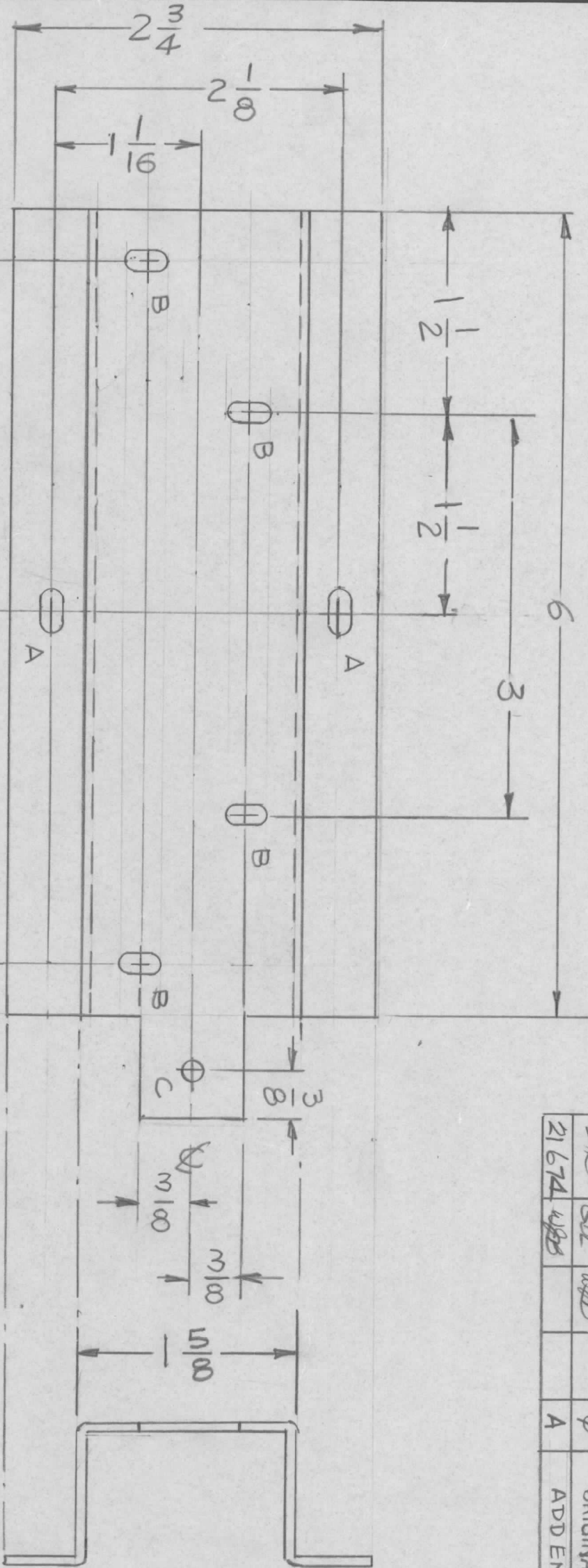
FINAL APPROVAL		DATE
MECH. DES.	<i>[Signature]</i>	7/11/78
ELECT. DES.		
CHECKED		
DRAWN	G.D.L.	6-28-78

SIZE	CODE IDENT. NO.	DWG. NO.	ISSUE
B	82679	MS 6915	X
SCALE	1:1	SHEET	OF

LIST OF MATERIAL  
 THE TECHNICAL MATERIEL CORP.  
 MAMARONECK, NEW YORK  
 PLATE, HEAT SINK



REVISIONS				DATE	APPROVED
E.M.N. NO.	DRAFT	CHKD	ZONE	LTR	DESCRIPTION
21674	WBS	WBS		Ø	ORIGINAL RELEASE FOR PRODUCTION
				A	ADD END VIEW $\frac{1}{8}$ DIM.
					8-16-78
					8-18-78



HOLES:  
 A - 11/64 X 11/32 2 REQ'D  
 B - 5/32 X 5/16 4 REQ'D  
 C - 11/64 DIA

UNLESS OTHERWISE SPECIFIED:  
 1. USE MATERIAL THICKNESS FOR MAXIMUM RADIUS ON ALL BENDS.  
 2. ALL ANGULAR BENDS 90 DEGREES.  
 3. REMOVE ALL BURRS AND SHARP EDGES.  
 4. MOUNT INSERTS AFTER FINISHING.

MARK TMC PART NUMBER  
 1/8 HIGH GOTHIC WITH LATEST  
 REVISION LETTER

QTY / UNIT	1	MODEL USED ON	DPC-10	ASS'Y NO.	
APPLICATION					
CODE					

NOTICE TO PERSONS RECEIVING THIS DRAWING  
 THE TECHNICAL MATERIEL CORPORATION claims proprietary right in the material disclosed hereon. This drawing is issued in confidence for engineering information only and may not be reproduced or used to manufacture anything shown hereon without permission from THE TECHNICAL MATERIEL CORPORATION to the user. This drawing is loaned for mutual assistance and is subject to recall at any time.

UNLESS OTHERWISE SPECIFIED DIMENSIONS ARE IN INCHES AND INCLUDE CHEMICALLY APPLIED OR PLATED FINISHES	DECIMALS	TOLS.	FRACTIONS	ANGLES
.X ± .05	.XX ± .01	.XXX ± .005	1/64	90° .30'
MATERIAL .063THK ALUM 5052-H32				
FINISH S404 YEL IZIDITE				

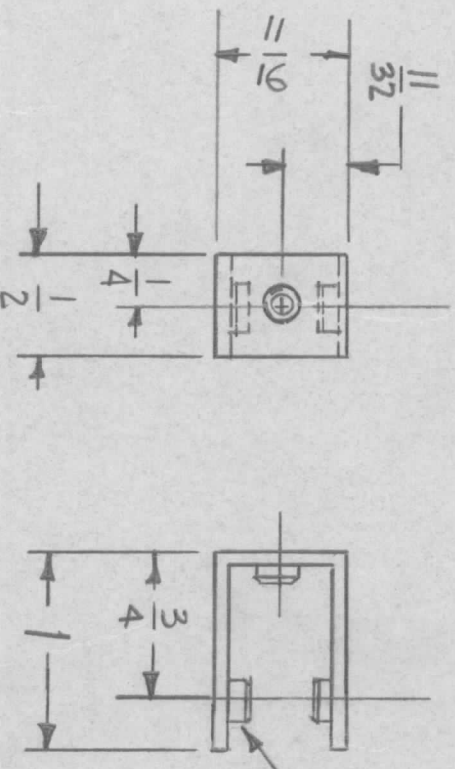
REQ'D	ITEM	PART NUMBER	DESCRIPTION	SYM.
LIST OF MATERIAL				

THE TECHNICAL MATERIEL CORP.  
 MAMARONECK, NEW YORK  
 PLUG, CONNECTOR BRKT

FINAL APPROVAL	DATE	DATE	DATE
MECH. DES.	8/16/78		
ELECT. DES.			
CHECKED			
DRAWN	G.D.L.		
DATE	8-		
SIZE	CODE IDENT. NO.	DWG NO.	ISSUE
B	82679	MS 6926	A
SCALE	1:1	SHEET	OF



REVISIONS				
EMIN. NO.	DRAFT	CHKD	ZONE	LTR
DESCRIPTION	DATE	APPROVED		



① .161-.164 DIA  
 UT124-0440-4  
 (3 Req.)

- UNLESS OTHERWISE SPECIFIED:
1. USE MATERIAL THICKNESS FOR MAXIMUM RADIUS ON ALL BENDS.
  2. ALL ANGULAR BENDS 90 DEGREES.
  3. REMOVE ALL BURRS AND SHARP EDGES.
  4. MOUNT INSERTS AFTER FINISHING.

QTY / UNIT	MODEL USED ON	ASS'Y NO.
	DPC-16	
	APPLICATION	
	CODE	

DECIMALS	FRACTIONS
.X ± .05	1/64
.XX ± .01	ANGLES
.XXX ± .005	0° - 30°

FINAL APPROVAL	DATE
MECH. DES.	DATE
ELECT. DES.	DATE
CHECKED	DATE
DRAWN	DATE

SIZE	CODE IDENT. NO.	DWG. NO.	ISSUE
B	82679	MS 6927	
SCALE			

NOTICE TO PERSONS RECEIVING THIS DRAWING  
 THE TECHNICAL MATERIEL CORPORATION claims proprietary right in the material disclosed hereon. This drawing is issued in confidence for engineering information only and may not be reproduced or used to manufacture anything shown hereon without permission from THE TECHNICAL MATERIEL CORPORATION to the user. This drawing is loaned for mutual assistance and is subject to recall at any time.

REQ'D	ITEM	PART NUMBER	DESCRIPTION	SYM.
3	1	UT124-0440-4	NUT ROUND	

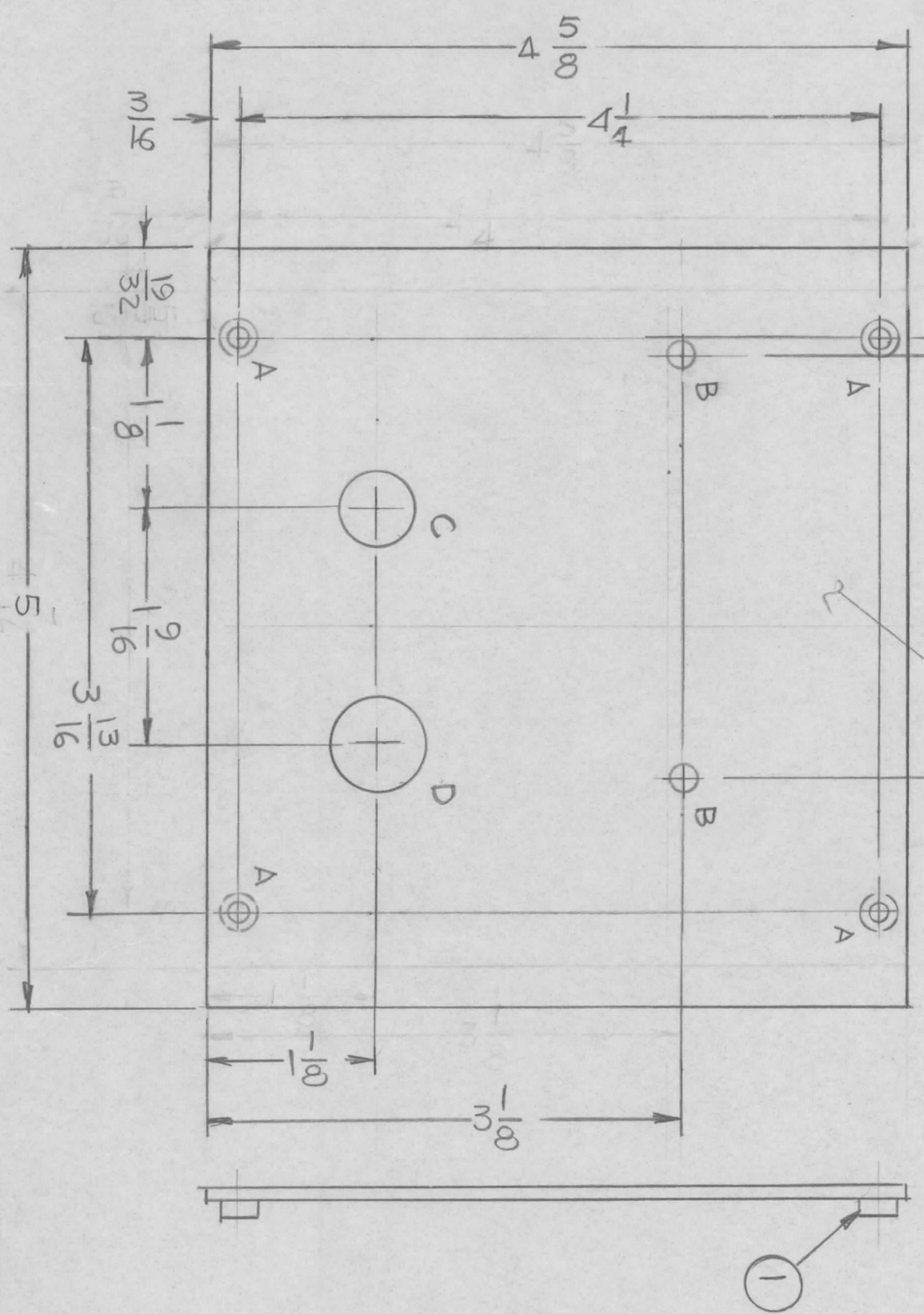
LIST OF MATERIAL

THE TECHNICAL MATERIEL CORP.  
 MAMARONECK, NEW YORK  
 BRACKET, PC MTG.



REVISIONS				DATE	APPROVED
EM.N. NO.	DRAFT	CHKD	ZONE	LTR	DESCRIPTION

MARK TMC PART NUMBER  
1/8 HIGH GOTHIC WITH LATE<sup>o</sup>  
REVISION LETTER ON REAR



- HOLES:
- A - .191 - .194 DIA 4 REQ
  - B - 3/16 DIA 2 REQ
  - C - 1/2 DIA
  - D - 5/8 DIA

REQ'D	ITEM	PART NUMBER	DESCRIPTION	SYM.
4	1	NT129-0632-4	NUT, ROUND	A

LIST OF MATERIAL

**THE TECHNICAL MATERIEL CORP.**  
MAMARONECK, NEW YORK

PLATE, MTG XMFR

QTY / UNIT	1	MODEL USED ON	CFS-4	ASS'Y NO.	
APPLICATION		CODE			

UNLESS OTHERWISE SPECIFIED DIMENSIONS ARE IN INCHES AND INCLUDE CHEMICALLY APPLIED OR PLATED FINISHES	FINAL APPROVAL	DATE
MECH. DES.		
ELECT. DES.		
CHECKED		
DRAWN	G.D.L.	DATE 7-25-78

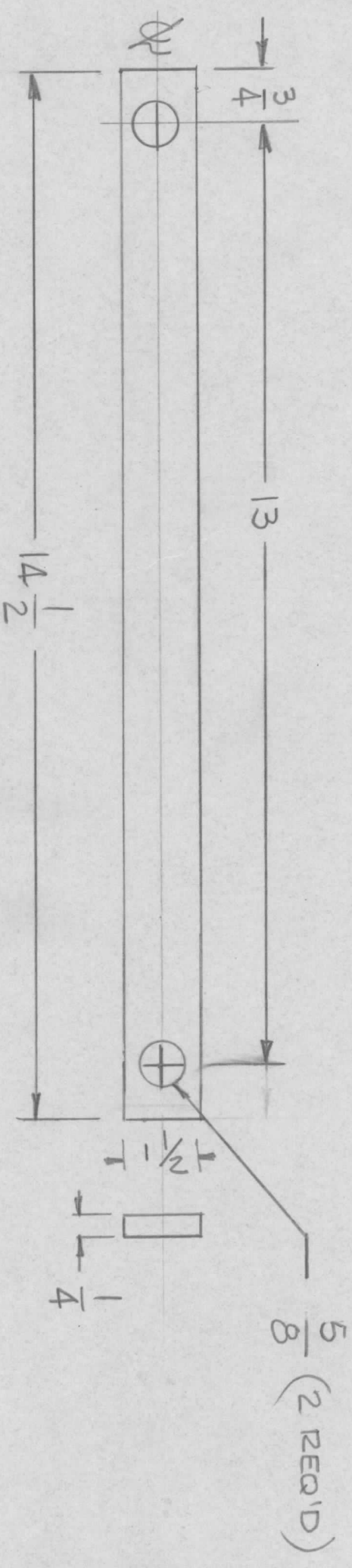
DECIMALS	FRACTIONS
.X ± .05	1/64
.XX ± .01	ANGLES
.XXX ± .005	0° - 30'

MATERIAL	ALUM 5052-H32	FINISH	5404 YEL/DI/DTE
SIZE	B	CODE IDENT. NO.	82679
SCALE	1:1	DWG. NO.	MS 6929
SHEET	1	ISSUE	X

NOTICE TO PERSONS RECEIVING THIS DRAWING  
THE TECHNICAL MATERIEL CORPORATION claims proprietary right in the material disclosed hereon. This drawing is issued in confidence for engineering information only and may not be reproduced or used to manufacture anything shown hereon without permission from THE TECHNICAL MATERIEL CORPORATION to the user. This drawing is loaned for mutual assistance and is subject to recall at any time.



REVISIONS							
EM.N. NO.	DRAFT	CHKD	ZONE	LTR	DESCRIPTION	DATE	APPROVED



REQ'D ITEM	PART NUMBER	DESCRIPTION	SYM.
LIST OF MATERIAL			
<b>THE TECHNICAL MATERIEL CORP.</b> MAMARONECK, NEW YORK			
FINAL APPROVAL	DATE		
MECH. DES.	DATE		
ELECT. DES.	DATE		
CHECKED	DATE		
DRAWN	DATE		
DRAWN G.D.L.		DATE 8-1-78	
SIZE B		CODE IDENT. NO. 82679	DWG NO. MS 6933
SCALE 1/2		SHEET OF	
		ISSUE X	

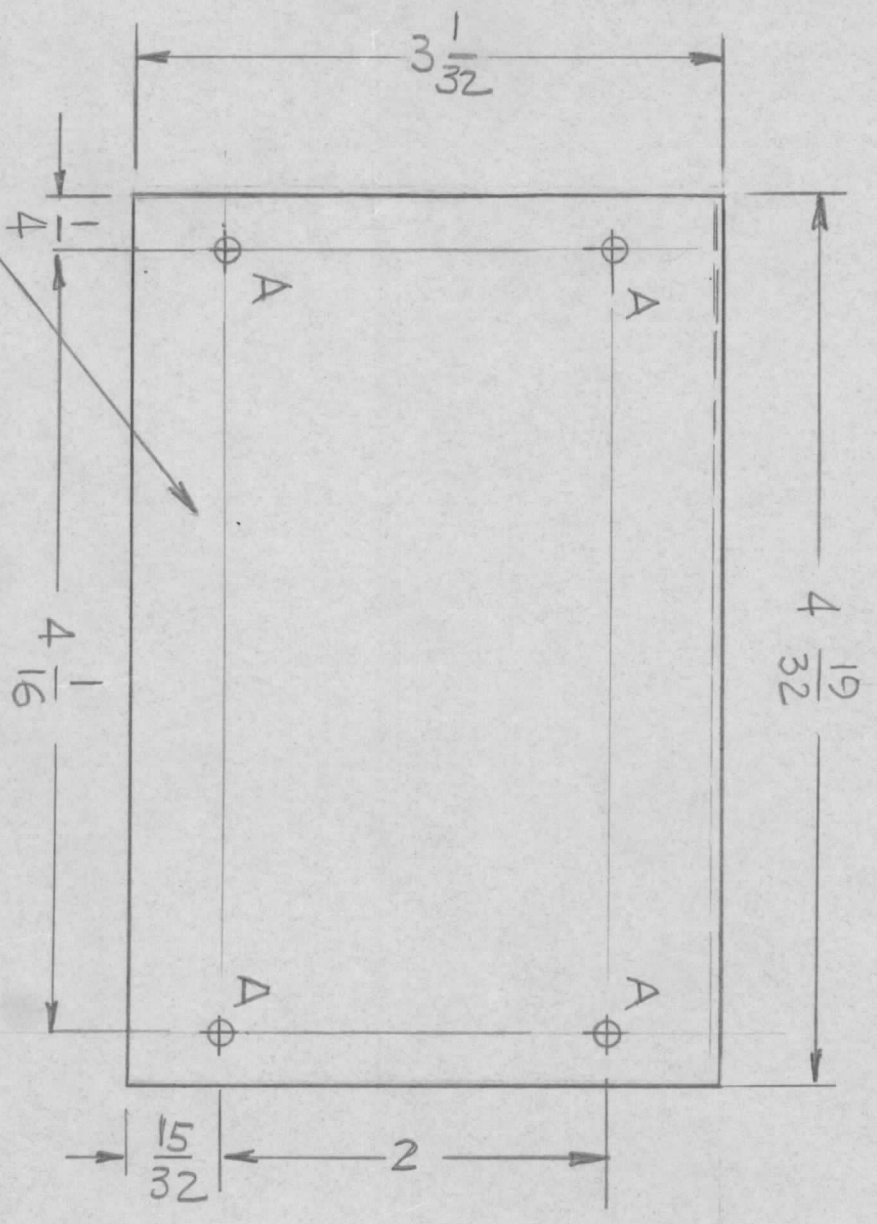
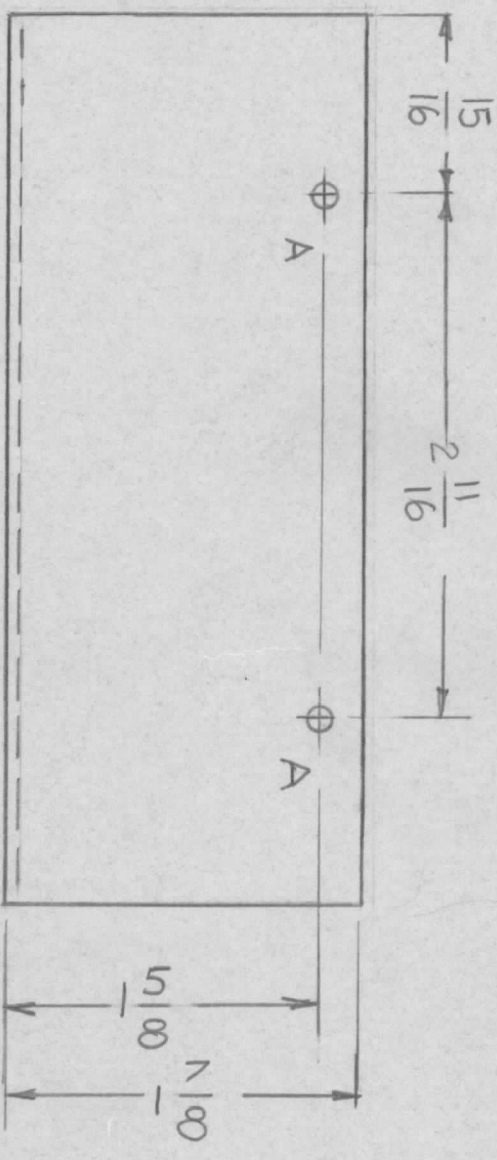
QTY / UNIT	2	MODEL USED ON	H.F.T.A-10K	ASS'Y NO.	
APPLICATION					
CODE					

**NOTICE TO PERSONS RECEIVING THIS DRAWING**  
 THE TECHNICAL MATERIEL CORPORATION claims proprietary right in the material disclosed hereon. This drawing is issued in confidence for engineering information only and may not be reproduced or used to manufacture anything shown hereon without permission from THE TECHNICAL MATERIEL CORPORATION to the user. This drawing is loaned for mutual assistance and is subject to recall at any time.

UNLESS OTHERWISE SPECIFIED DIMENSIONS ARE IN INCHES AND INCLUDE CHEMICALLY APPLIED OR PLATED FINISHES	FRACTIONS 1/64
DECIMALS .X ± .05	TOLS. ANGLES 0° - 30'
.XX ± .01	
.XXX ± .005	
MATERIAL ALY 20224-T4	FINISH 5404
1/4 THK	YEL IDIDITE



REVISIONS							
EMIN. NO.	DRAFT	CHKD	ZONE	LTR	DESCRIPTION	DATE	APPROVED
#	MAC				ORIGINAL RELEASE FOR PRODUCTION	9-20-79	FB



HOLE S :  
A - 5/32 DIA 6 REQ'D

MARK TMC PART NUMBER  
1/8 HIGH GOTHIC WITH LATEST  
REVISION LETTER

QTY / UNIT	1	MODEL USED ON	MFT-10K/5	ASS'Y NO.	BMA 560
APPLICATION					
CODE					

NOTICE TO PERSONS RECEIVING THIS DRAWING  
THE TECHNICAL MATERIEL CORPORATION claims proprietary right in the material disclosed hereon. This drawing is issued in confidence for engineering information only and may not be reproduced or used to manufacture anything shown hereon without permission from THE TECHNICAL MATERIEL CORPORATION to the user. This drawing is loaned for mutual assistance and is subject to recall at any time.

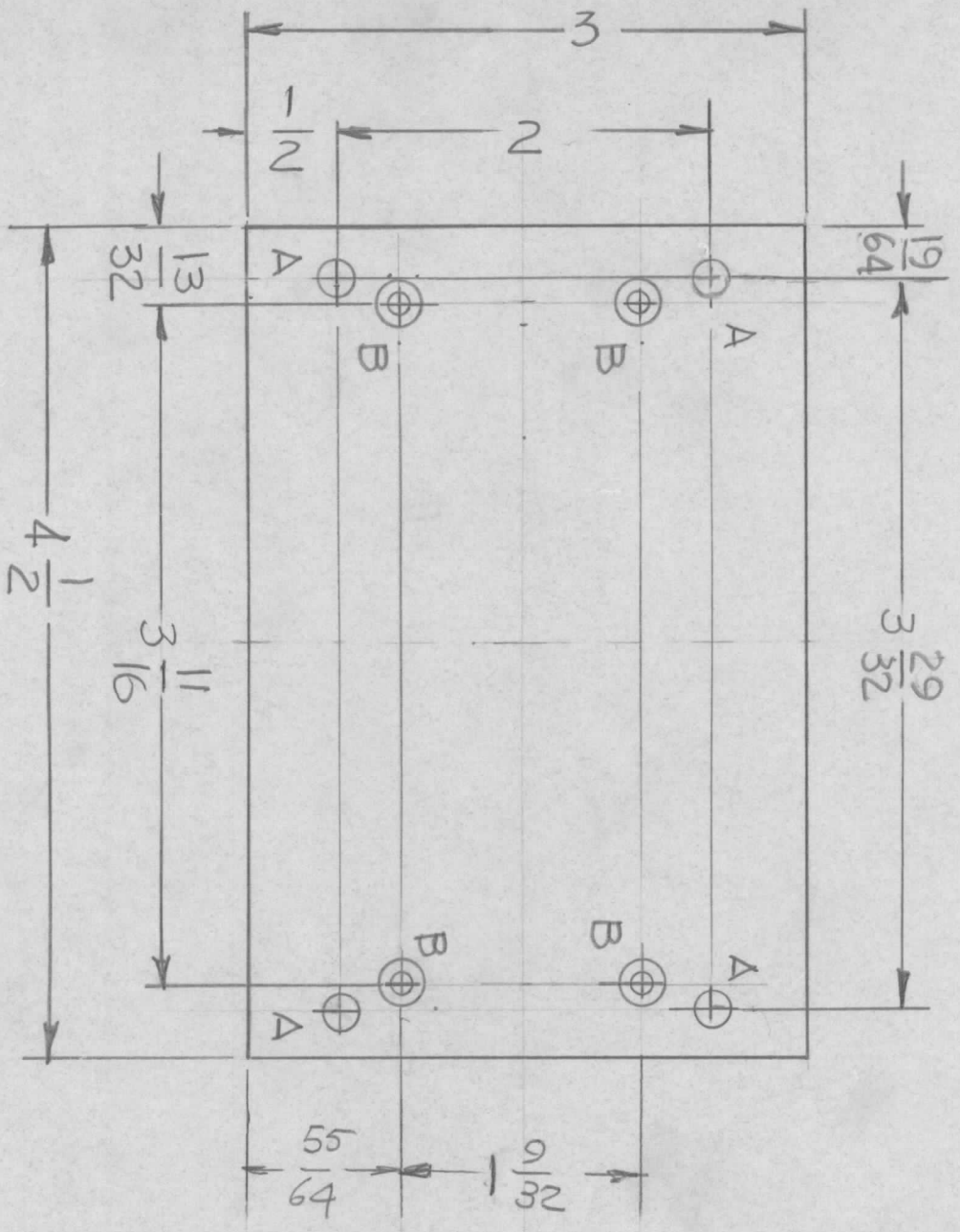
UNLESS OTHERWISE SPECIFIED DIMENSIONS ARE IN INCHES AND INCLUDE CHEMICALLY APPLIED OR PLATED FINISHES
DECIMALS .X ± .05 TOLS. 1/64
.XX ± .01 ANGLES 0° - 30'
XXX ± .005
MATERIAL .051 THK
ALUM. 5052-H32
FINISH S404
VEL. IRIDITE

REQ'D ITEM	PART NUMBER	DATE
FINAL APPROVAL	MECH. DES.	DATE
ELECT. DES.	CHECKED	DATE
DRAWN	DATE	
G.D.L.	8-24-78	

LIST OF MATERIAL			
THE TECHNICAL MATERIEL CORP.			
MAMARONECK, NEW YORK			
COVER, BCK. MICROSWITCH			
SIZE	CODE IDENT. NO.	DWG NO.	ISSUE
B	82679	MS6936	Ø
SCALE	1:1	SHEET	OF



REVISIONS							
EMN NO	DRAFT	CHKD	ZONE	LTR	DESCRIPTION	DATE	APPROVED



HOLES :  
 A -  $1\frac{13}{64}$  DIA 4 REQ'D  
 B - .120 DIA C'SHK 82° TO .230 DIA 4REQ

REQ'D	ITEM	PART NUMBER	DESCRIPTION	SYM.
			LIST OF MATERIAL	
			THE TECHNICAL MATERIEL CORP. MAMARONECK, NEW YORK	
			PLATE, MTG FILTER	
			SIZE B CODE IDENT. NO. 82679 DWG NO. MS 6938	ISSUE X
			SCALE 1:1 SHEET OF	

QTY / UNIT	6	MODEL USED ON	CMR-4	ASS'Y NO.	
APPLICATION					
CODE					

NOTICE TO PERSONS RECEIVING THIS DRAWING  
 THE TECHNICAL MATERIEL CORPORATION claims proprietary right in the material disclosed hereon. This drawing is issued in confidence for engineering information only and may not be reproduced or used to manufacture anything shown hereon without permission from THE TECHNICAL MATERIEL CORPORATION to the user. This drawing is loaned for mutual assistance and is subject to recall at any time.

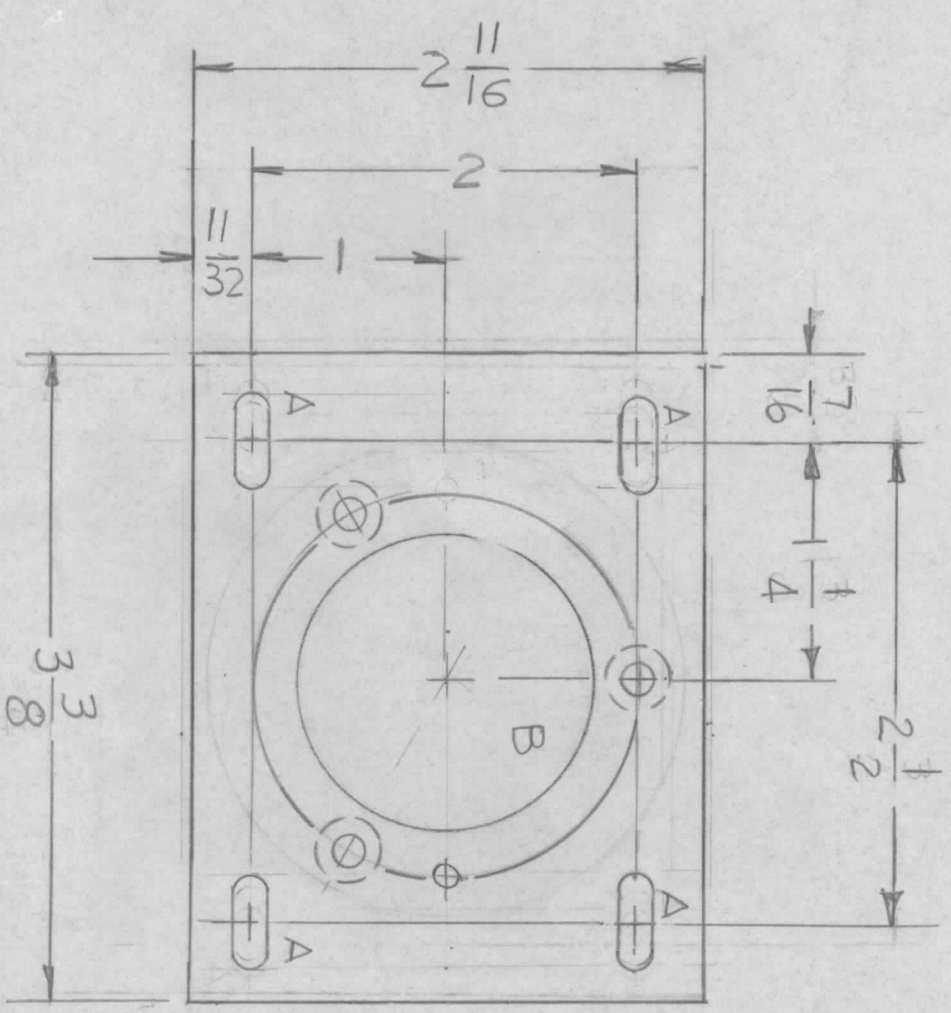
UNLESS OTHERWISE SPECIFIED DIMENSIONS ARE IN INCHES AND INCLUDE CHEMICALLY APPLIED OR PLATED FINISHES	FINAL APPROVAL	DATE
MECH. DES.		
ELECT. DES.		
CHECKED		
DRAWN	G.D.L.	9-3-78

DECIMALS	FRACTIONS
.X ± .05	1/64
.XX ± .01	ANGLES
.XXX ± .005	0° - 30'

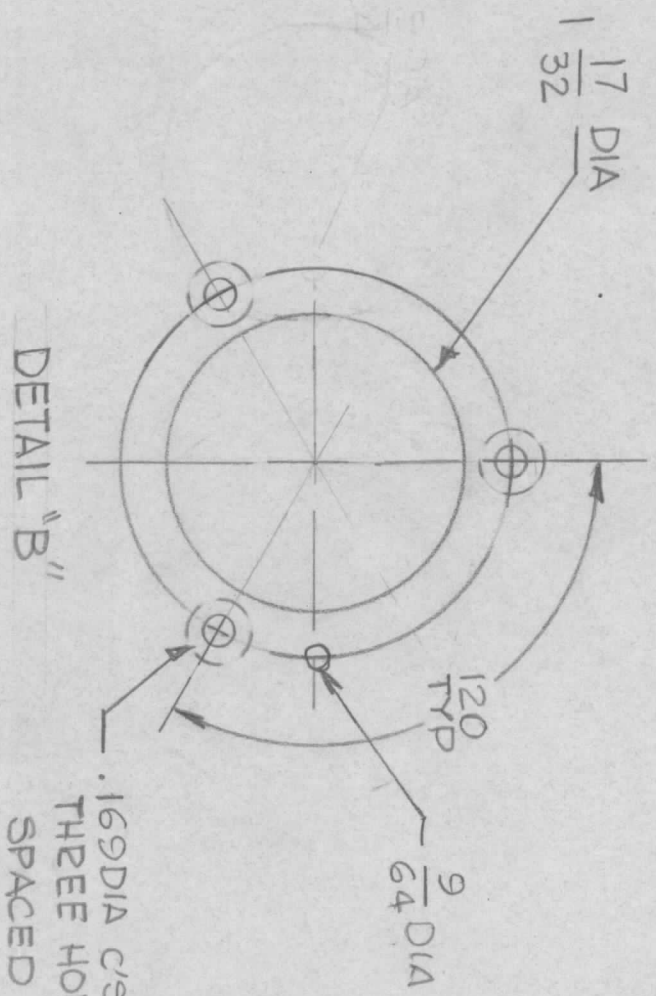
MATERIAL, 063 THK  
 5052 H-32  
 FINISH S404  
 YEL. IBIDITE



HOLEES  
 A - 3/16 x 1/2 SLOT 4 REQ.  
 B - SEE DETAIL



REVISIONS							
EMN NO.	DRAFT	CHKD	ZONE	LTR	DESCRIPTION	DATE	APPROVED
				X1	9/64 DIA HOLE ON DETAIL B RELOCATED	10-13-78	
#	MAC			Ø	ORIGINAL RELEASE FOR PRODUCTION	9-20-79	FB



QTY / UNIT	1	MODEL USED ON	META-10K	ASS'Y NO.	BMA 560
APPLICATION		CODE			

UNLESS OTHERWISE SPECIFIED DIMENSIONS ARE IN INCHES AND INCLUDE CHEMICALLY APPLIED OR PLATED FINISHES	DECIMALS	FRACTIONS
.X ± .05	1/64	ANGLES
.XX ± .01		0° - 30'
.XXX ± .005		
FINISH	5A04	
YEL	IRIDITE	
MATERIAL	ALUM 5052-H32	
	ØBITHK	

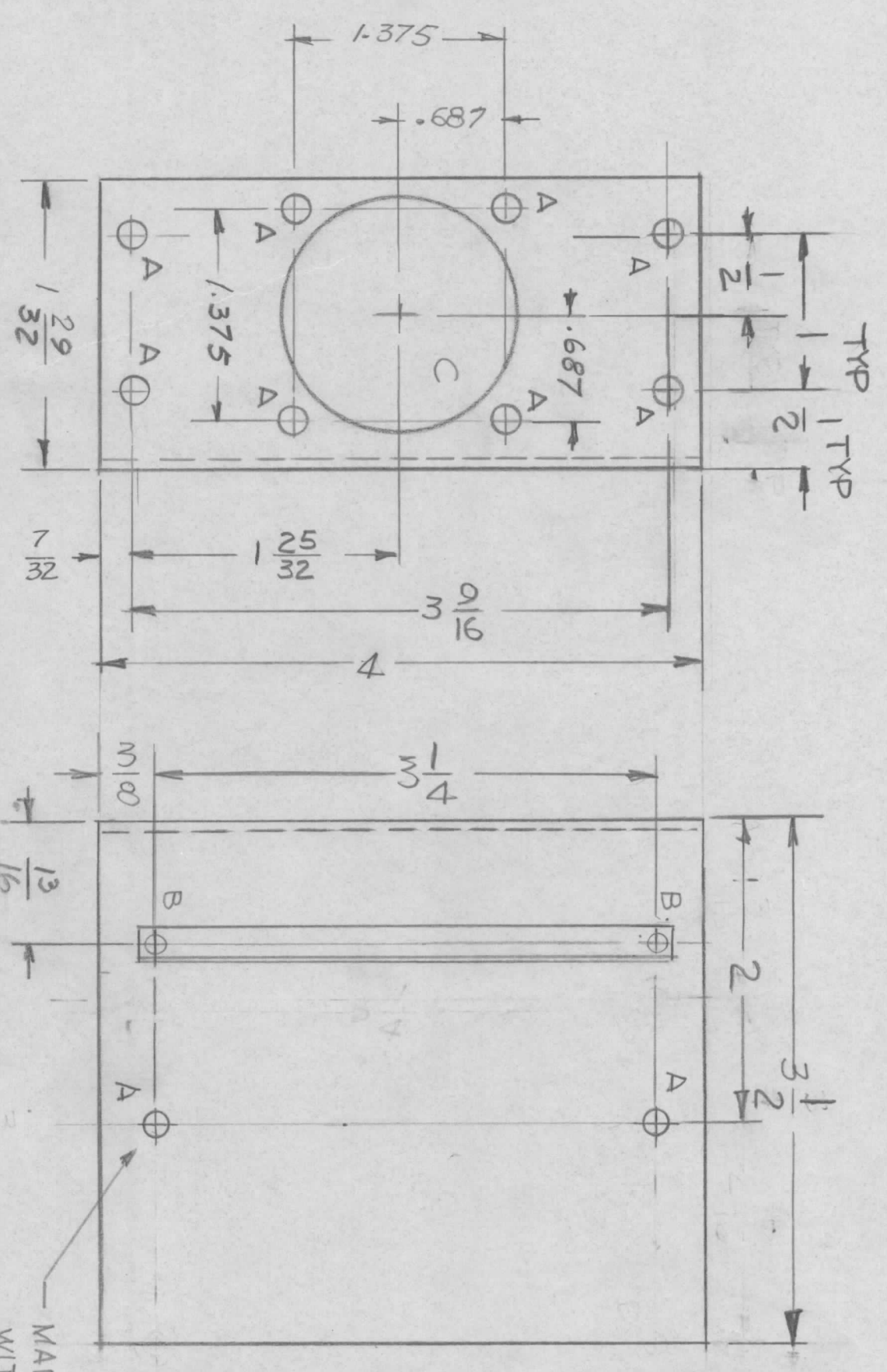
REQ'D	ITEM	PART NUMBER	DESCRIPTION	SYM.
			THE TECHNICAL MATERIEL CORP. MAMARONECK, NEW YORK	

FINAL APPROVAL	MECH. DES.	DATE	ELECT. DES.	DATE	DRAWN	DATE
					G.D.L.	10-2-78
LIST OF MATERIAL						
THE TECHNICAL MATERIEL CORP. MAMARONECK, NEW YORK						
PLATE MTG. MOTOR (M0129)						
SIZE	CODE IDENT. NO.	DWG NO.	ISSUE			
B	82679	MS 6942	Ø			
SCALE	1:1	SHEET	OF			

NOTICE TO PERSONS RECEIVING THIS DRAWING  
 THE TECHNICAL MATERIEL CORPORATION claims proprietary right in the material disclosed hereon. This drawing is issued in confidence for engineering information only and may not be reproduced or used to manufacture anything shown hereon without permission from THE TECHNICAL MATERIEL CORPORATION to the user. This drawing is loaned for mutual assistance and is subject to recall at any time.



REVISIONS				DATE	APPROVED
EMN. NO.	DRAFT	CHKD	ZONE	LTR	DESCRIPTION
-#	MAC				ORIGINAL RELEASE FOR PRODUCTION
					9-17-79 C.B.



- UNLESS OTHERWISE SPECIFIED:
1. USE MATERIAL THICKNESS FOR MAXIMUM RADIUS ON ALL BENDS.
  2. ALL ANGULAR BENDS 90 DEGREES.
  3. REMOVE ALL BURRS AND SHARP EDGES.
  4. MOUNT INSERTS AFTER FINISHING.

QTY / UNIT	MODEL USED ON	ASS'Y NO.
	LFE-2A	AX5245
APPLICATION		
CODE		

NOTICE TO PERSONS RECEIVING THIS DRAWING  
 THE TECHNICAL MATERIEL CORPORATION claims proprietary right in the material disclosed hereon. This drawing is issued in confidence for engineering information only and may not be reproduced or used to manufacture anything shown hereon without permission from THE TECHNICAL MATERIEL CORPORATION to the user. This drawing is loaned for mutual assistance and is subject to recall at any time.

REQ'D	ITEM	PART NUMBER	DESCRIPTION	SYM.
1	2	CU157-4	RETAINER PC BD	B
2	1	EY100-5	EYELET, FLAT FLANGE	B

UNLESS OTHERWISE SPECIFIED DIMENSIONS ARE IN INCHES AND INCLUDE CHEMICALLY APPLIED OR PLATED FINISHES			
DECIMALS	FRACTIONS		
.X ± .05	1/64		
.XX ± .01	TOLS. ANGLES		
.XXX ± .005	0° - 30'		
MATERIAL .063 ALUM			
FINISH 5404			
VEEL IRIDITE			

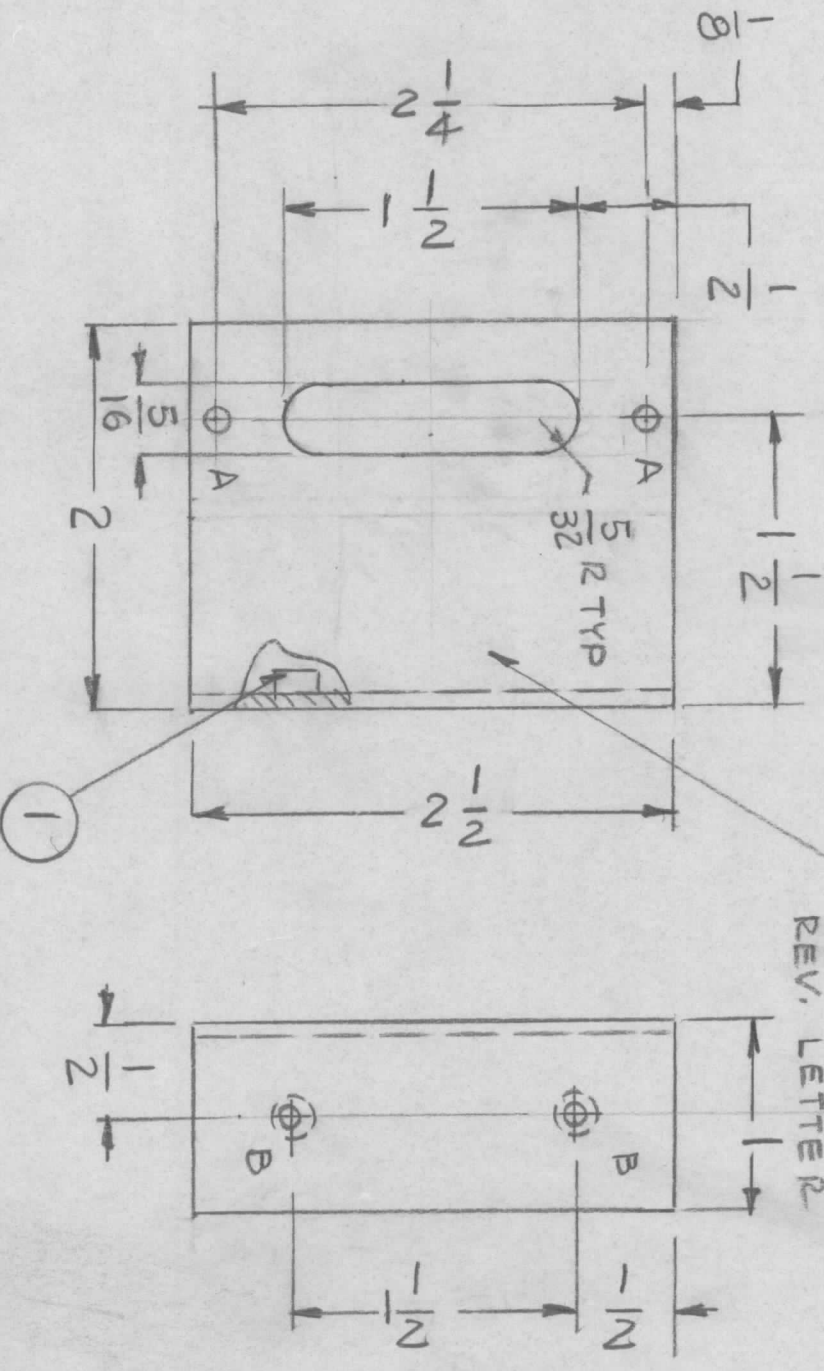
FINAL APPROVAL		DATE	
MECH. DES.		DATE	
ELECT. DES.		DATE	
CHECKED	DATE		
DRAWN	DATE		
LIST OF MATERIAL			
THE TECHNICAL MATERIEL CORP.			
MAMARONECK, NEW YORK			
BRACKET MTG. RETAINER			
PC BD			
SIZE	CODE IDENT. NO.	DWG NO.	ISSUE
B	82679	MS 6944	
SCALE	SHEET		OF

MARK TMC P/NO. 1/8 HIGH GOTHIC WITH LATEST REV. LETTER

HOLE  
 A - 11/64 DIA (10 REQ'D)  
 B - .067 DIA (2 REQ'D)  
 C - 1 17/32 DIA (1 REQ'D)



REVISIONS			
EM.N. NO.	DRAFT	CHKD	ZONE
#	MAC		
LTR	DESCRIPTION	DATE	APPROVED
Ø	ORIGINAL RELEASE FOR PRODUCTION	9-21-79	FB



HOLES:  
 A - 1/8 DIA 2 REQ'D  
 B - .191 - .194 DIA 2 REQ'D

REQ'D	ITEM	PART NUMBER	DESCRIPTION	SYM.
2	1	NT 129-0632-4	NUT ROUND	

LIST OF MATERIAL  
**THE TECHNICAL MATERIEL CORP.**  
 MAMARONECK, NEW YORK  
**BRACKET, MTG**

QTY / UNIT	1	MODEL USED ON	MFT-10K/5	ASSY. NO.	(AX5240)
APPLICATION		CODE			

UNLESS OTHERWISE SPECIFIED DIMENSIONS ARE IN INCHES AND INCLUDE CHEMICALLY APPLIED OR PLATED FINISHES		FINAL APPROVAL		DATE
MECH. DES.		MECH. DES.	<i>[Signature]</i>	DATE
ELECT. DES.		ELECT. DES.		DATE
CHECKED		CHECKED		DATE
DRAWN	G.D.L.	DRAWN		DATE 11-23-78
MATERIAL .063THK		MATERIAL		
ALY ALUM 5052-H32		FINISH		
5404		YEL. IRIDITE		

NOTICE TO PERSONS RECEIVING THIS DRAWING  
 THE TECHNICAL MATERIEL CORPORATION claims proprietary right in the material disclosed hereon. This drawing is issued in confidence for engineering information only and may not be reproduced or used to manufacture anything shown hereon without permission from THE TECHNICAL MATERIEL CORPORATION to the user. This drawing is loaned for mutual assistance and is subject to recall at any time.

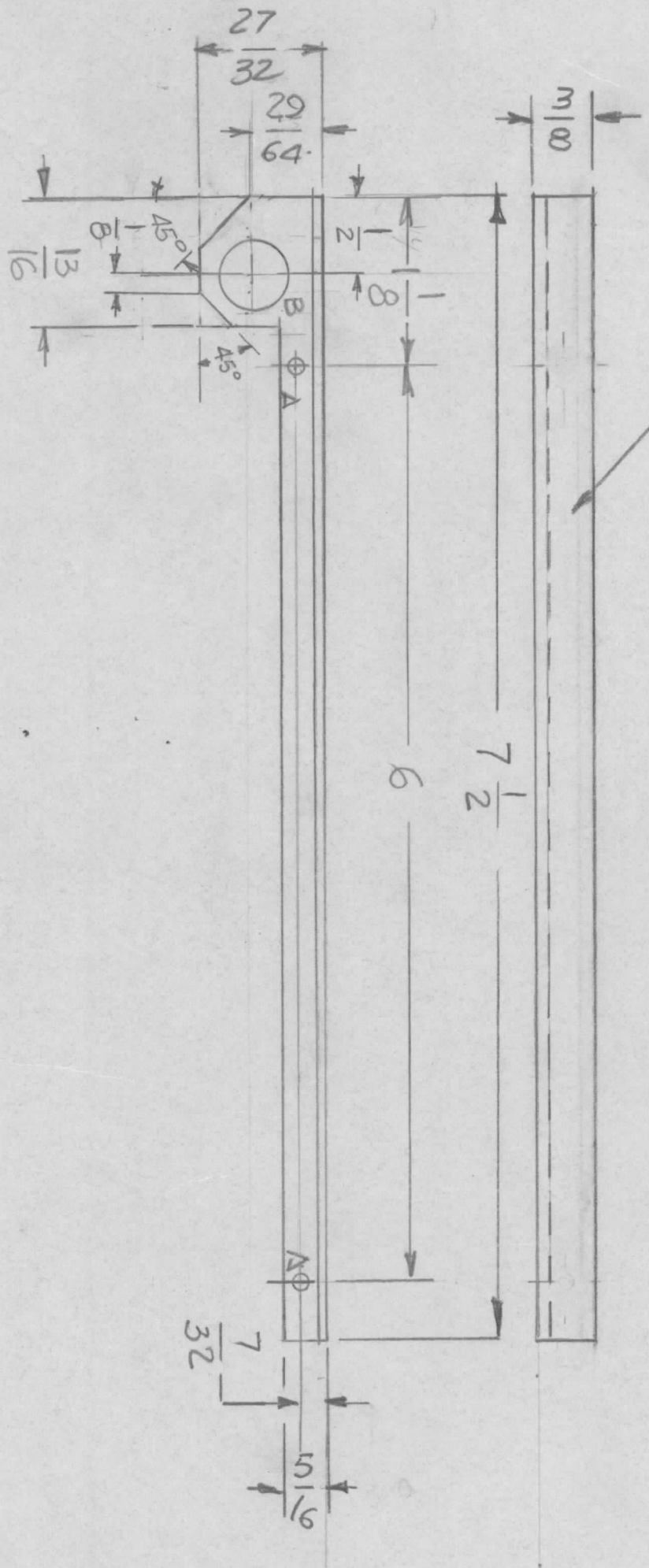
SIZE	B	CODE IDENT. NO.	82679	DWG. NO.	MS 6945	ISSUE	Ø
SCALE	1:1	SHEET		OF			



REVISIONS				
EMN. NO.	DRAFT	CHKD	ZONE	LTR
#	MAC			

DESCRIPTION	DATE	APPROVED
ORIGINAL RELEASE FOR PRODUCTION	9-19-79	F.B.

MARK TMC P/ND 1/8 HIGH GOTHIC  
W/LATEST REV. LETTER



HOLES  
A - 1/8 DIA 2 REQ'D  
B - 1/2 DIA 1 REQ'D

REQ'D ITEM	PART NUMBER	DESCRIPTION	SYM.
		STIFFENER, P.C.B.J.	

UNLESS OTHERWISE SPECIFIED DIMENSIONS ARE IN INCHES AND INCLUDE CHEMICALLY APPLIED OR PLATED FINISHES	FINAL APPROVAL	DATE
	<i>[Signature]</i>	9/28/79
MECH. DES.		
ELECT. DES.		
CHECKED		
DRAWN	G.D.L.	10-31-78

DECIMALS	FRACTIONS
.X ± .05	1/64
.XX ± .01	ANGLES
.XXX ± .005	0° - 30'

MATERIAL	ALUM 5052-H32
FINISH	5404
	VEL. 121DITE

QTY / UNIT	1
MODEL USED ON	META-10K
ASS'Y NO.	A5768
APPLICATION	
CODE	

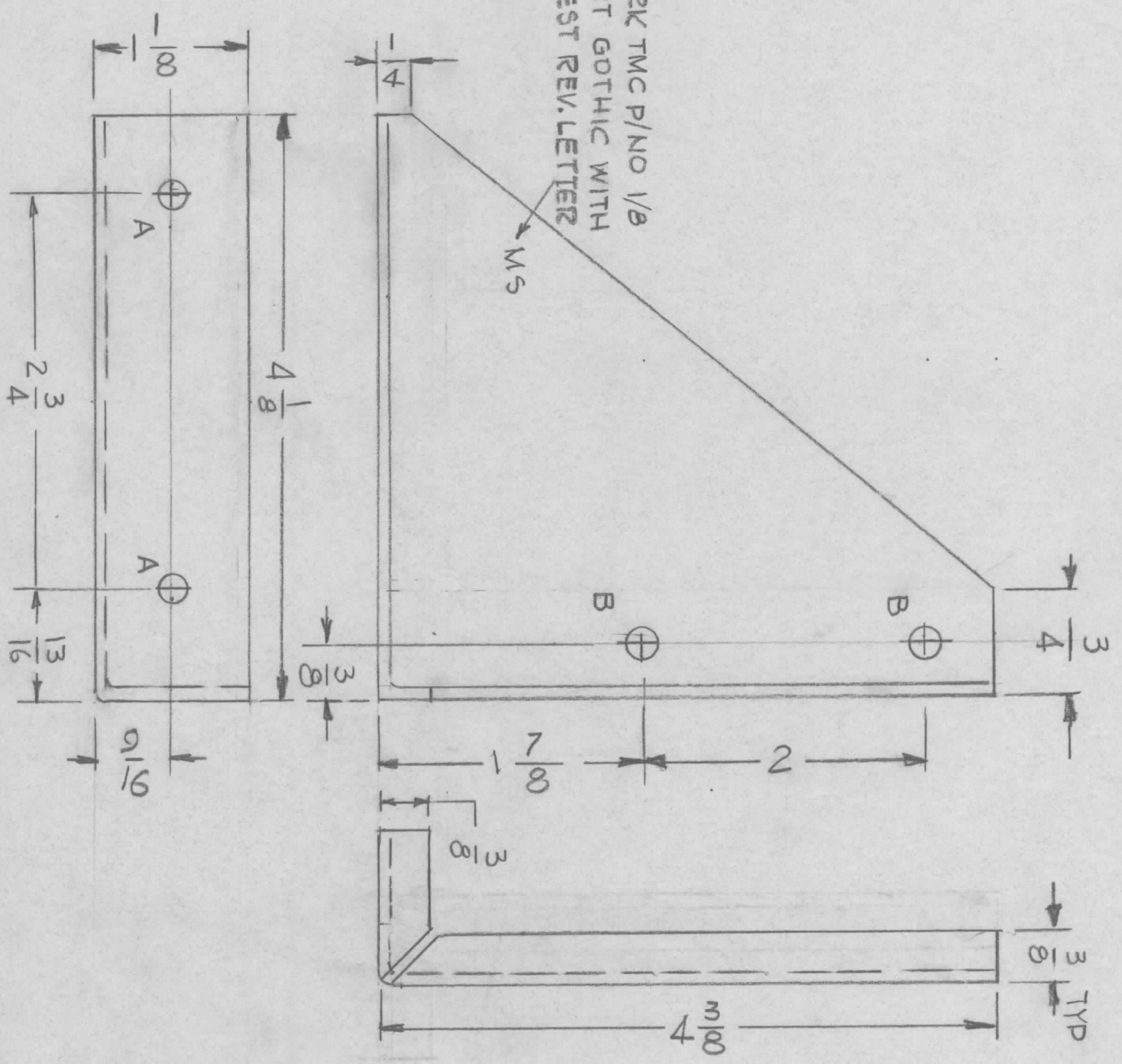
SIZE	B
CODE IDENT. NO.	82679
DWG. NO.	MS 6946
SCALE	1:1
SHEET	1
OF	
ISSUE	<input checked="" type="checkbox"/>

NOTICE TO PERSONS RECEIVING THIS DRAWING  
THE TECHNICAL MATERIEL CORPORATION claims proprietary right in the material disclosed hereon. This drawing is issued in confidence for engineering information only and may not be reproduced or used to manufacture anything shown hereon without permission from THE TECHNICAL MATERIEL CORPORATION to the user. This drawing is loaned for mutual assistance and is subject to recall at any time.



REVISIONS							
EMN NO.	DRAFT	CHKD	ZONE	LTR	DESCRIPTION	DATE	APPROVED
#	M/C				ORIGINAL RELEASE FOR PRODUCTION	9-21-79	FB

MARK TMC P/NO 1/8  
 HIGHT GOTHIC WITH  
 LATEST REV. LETTER



HOLES -  
 A - 13/64 DIA 2 REQ'D  
 B - 15/64 DIA 2 REQ'D

TMC P/NO	DESCRIPTION	REQ'D
MS6947-1	AS SHOWN	1
MS6947-2	OPP. HAND	1

REQ'D	ITEM	PART NUMBER	DESCRIPTION	SYM.
			LIST OF MATERIAL	

THE TECHNICAL MATERIEL CORP.  
 MAMARONECK, NEW YORK  
 BRACKET MTG RESISTORS

UNLESS OTHERWISE SPECIFIED:

1. USE MATERIAL THICKNESS FOR MAXIMUM RADIUS ON ALL BENDS.
2. ALL ANGULAR BENDS 90 DEGREES.
3. REMOVE ALL BURRS AND SHARP EDGES.
4. MOUNT INSERTS AFTER FINISHING.

MS6947-2	MFT-10K/5	AX5096
MS6947-1	MFT-10K/5	AX5096

QTY / UNIT	MODEL USED ON	ASS'Y NO.
1	MFT-10K/5	AX5096

APPLICATION

CODE

NOTICE TO PERSONS RECEIVING THIS DRAWING  
 THE TECHNICAL MATERIEL CORPORATION claims proprietary right in the material disclosed hereon. This drawing is issued in confidence for engineering information only and may not be reproduced or used to manufacture anything shown hereon without permission from THE TECHNICAL MATERIEL CORPORATION to the user. This drawing is loaned for mutual assistance and is subject to recall at any time.

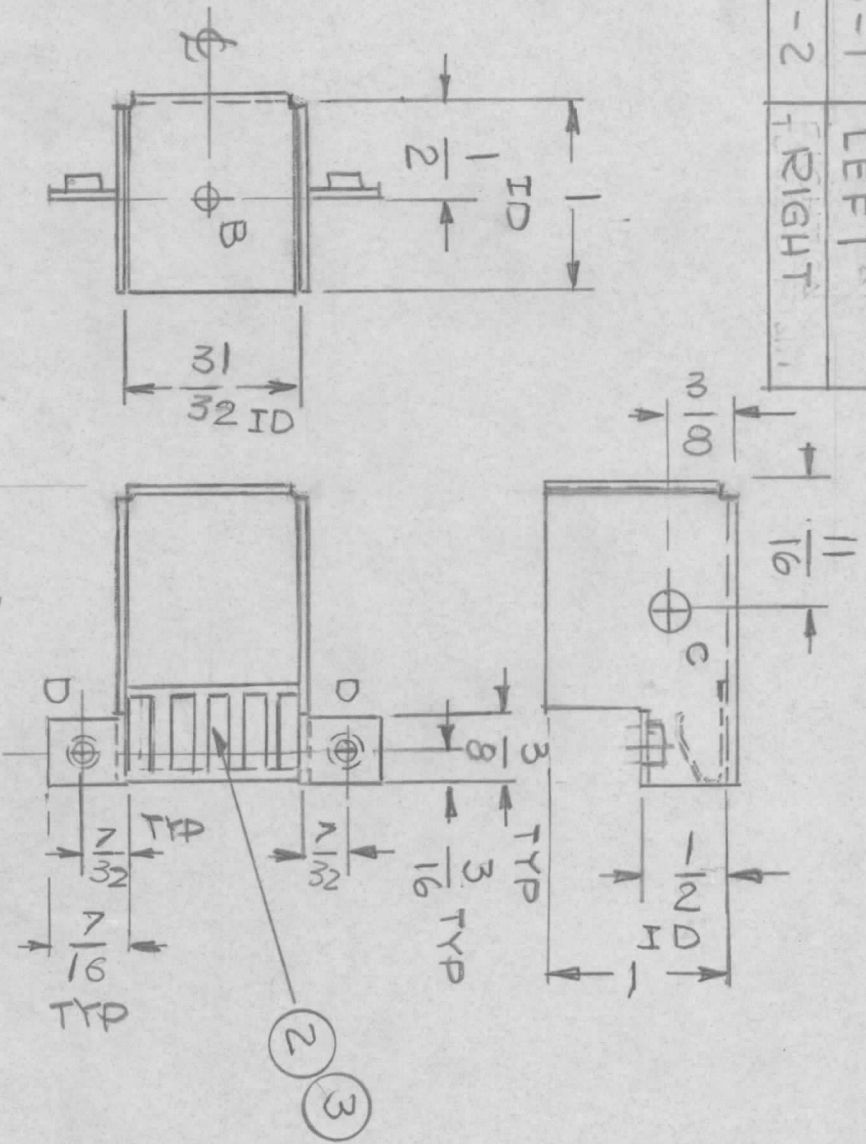
DECIMALS	TOLS.	FRACTIONS	ANGLES
.X ± .05		1/64	
.XX ± .01			0° - 30'
.XXX ± .005			

FINAL APPROVAL		DATE
MECH. DES.	<i>[Signature]</i>	DATE
ELECT. DES.		DATE
CHECKED		DATE
DRAWN	G.D.L.	DATE 12-15-78

SIZE	CODE IDENT. NO.	DWG. NO.	ISSUE
B	82679	MS6947	<i>[Signature]</i>
SCALE	1:1	SHEET	OF



TMC P/NO	DESCRIPTION
MS6960-1	LEFT
MS6960-2	RIGHT



NOTES:

LEFT CAN SHOWN  
RIGHT CAN TO BE OPPOSITE

1 MTG DN "D" HOLES

HOLES  
A - 3/32 DIA 1 REQ  
B - 1/8 DIA 2 REQ  
C - 17/64 DIA 2 REQ  
D - .161 - .164 DIA 2 REQ

EMN NO	DRAFT	CHKD	ZONE	LTR	DESCRIPTION	DATE	APPROVED
#	MAC				ORIGINAL RELEASE FOR PRODUCTION	11-6-79	DB

REQ'D	ITEM	PART NUMBER	DESCRIPTION	SYM.
X	3	BS-100	SOLDER SOFT	
1	2	FP-199-6	CONTACT, ELECTRICAL	
2	1	NT129-0440-7	NUT, POUND	

LIST OF MATERIAL  
THE TECHNICAL MATERIEL CORP.  
MAMARONECK, NEW YORK

COUPLER COMPONENT  
MTG.

QTY / UNIT	2	MODEL USED ON	CU-2B	ASSY NO.	A 5774
APPLICATION					
CODE					

UNLESS OTHERWISE SPECIFIED DIMENSIONS ARE IN INCHES AND INCLUDE CHEMICALLY APPLIED OR PLATED FINISHES	DECIMALS	FRACTIONS
X ± .05	1/64	
.XX ± .01		ANGLES
.XXX ± .005		0° - 30°

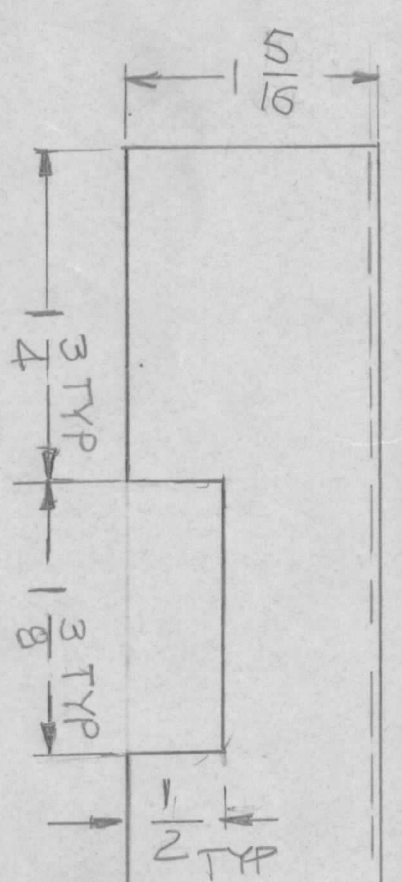
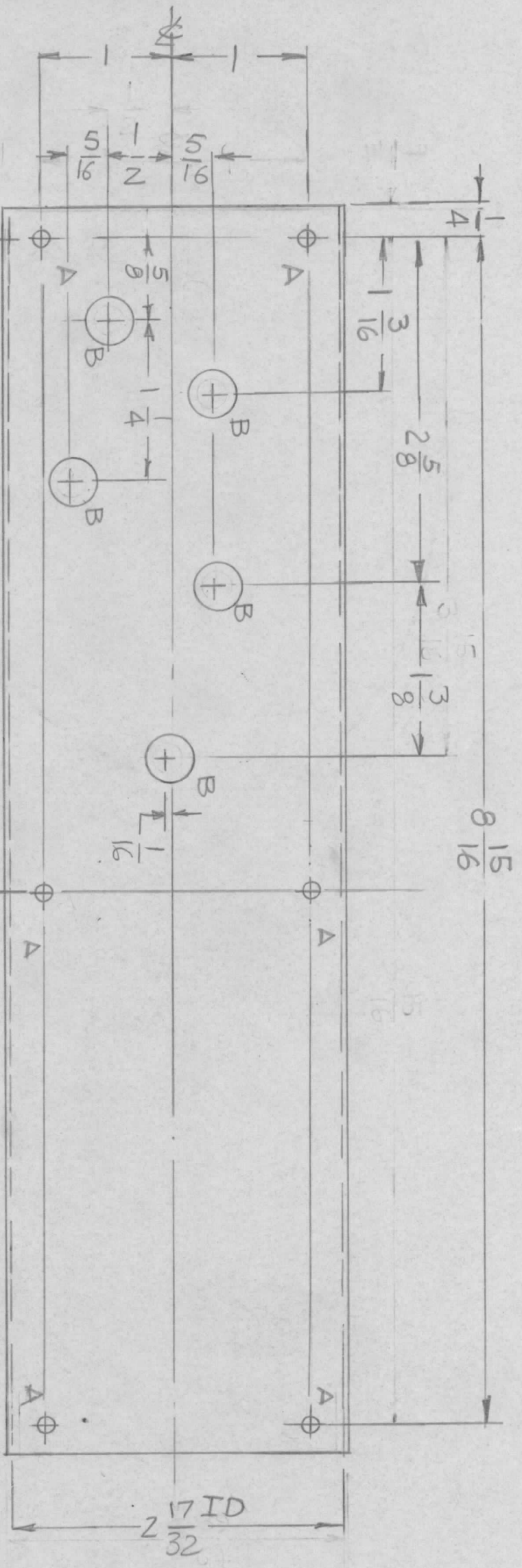
FINISH	TIN PLATED
MATERIAL	.040 THK COPPER

SIZE	CODE IDENT. NO.	DWG NO.	ISSUE
B	82679	MS 6960	Φ
SCALE	SHEET		OF

NOTICE TO PERSONS RECEIVING THIS DRAWING  
THE TECHNICAL MATERIEL CORPORATION claims proprietary right in the material disclosed hereon. This drawing is issued in confidence and may not be reproduced or used to manufacture any part or assembly without the written permission of THE TECHNICAL MATERIEL CORPORATION. This drawing is loaned for mutual assistance and is subject to return.



REVISIONS							
EMN NO.	DRAFT	CHKD	ZONE	LTR	DESCRIPTION	DATE	APPROVED
#	M/C				ORIGINAL RELEASE FOR PRODUCTION	9-18-79	FB



QTY / UNIT	1	MODEL USED ON	Δ MC-16	ASSY NO.	AX5249
APPLICATION					
CODE					

**NOTICE TO PERSONS RECEIVING THIS DRAWING**  
 THE TECHNICAL MATERIEL CORPORATION claims proprietary right in the material disclosed hereon. This drawing is issued in confidence for engineering information only and may not be reproduced or used to manufacture anything shown hereon without permission from THE TECHNICAL MATERIEL CORPORATION to the user. This drawing is loaned for mutual assistance and is subject to recall at any time.

REQ'D	ITEM	PART NUMBER	DESCRIPTION	SYM.
			LIST OF MATERIAL	

FINAL APPROVAL			ELECT. DES.		
MECH. DES.	DATE		CHECKED	DATE	
MS			G-DL	7-8-79	

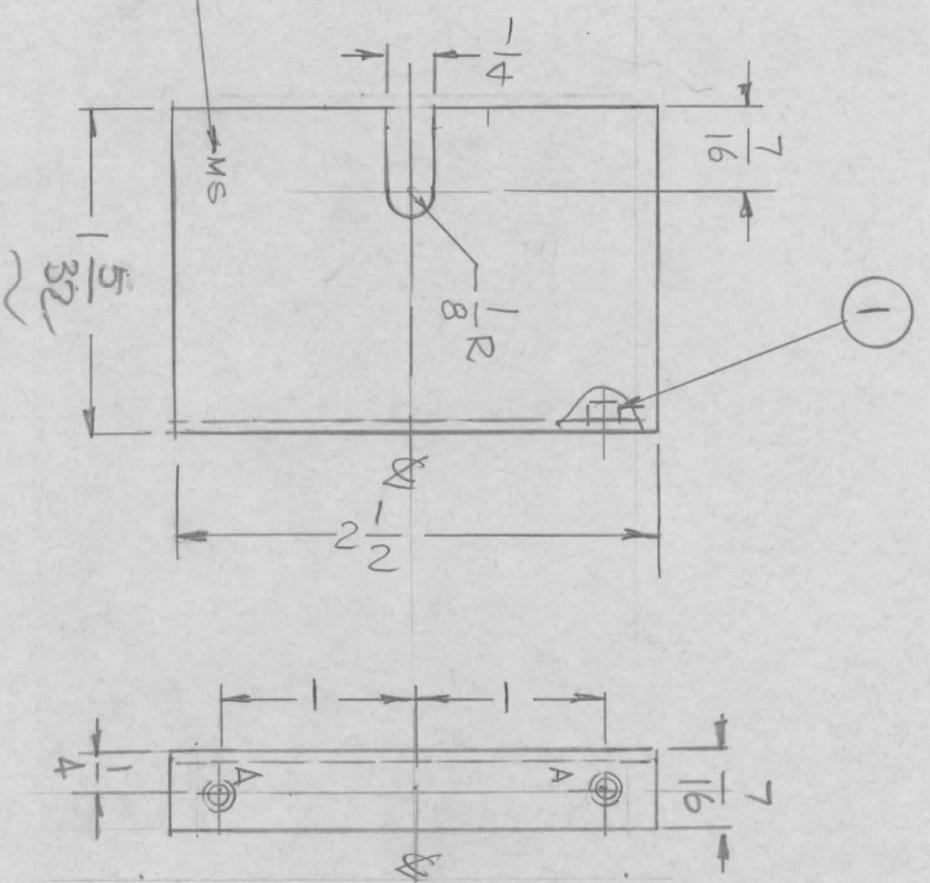
UNLESS OTHERWISE SPECIFIED DIMENSIONS ARE IN INCHES AND INCLUDE CHEMICALLY APPLIED OR PLATED FINISHES	DECIMALS .X ± .05 .XX ± .01 .XXX ± .005	FRACTIONS 1/64 ANGLES 0° - 30'	FINISH 5404 VEL IRIDITE	MATERIAL ALUM. 5052-H32 OSITHK	SIZE B	CODE IDENT. NO. 82679	DWG NO. MS 6962	SHEET 1	OF 1	ISSUE 1
---	--	---	-------------------------------	--------------------------------------	-----------	--------------------------	--------------------	------------	---------	------------

FCI-10-170 (10-66)



REVISIONS							
EMN NO.	DRAFT	CHKD	ZONE	LTR	DESCRIPTION	DATE	APPROVED
✓	MAC			✓	ORIGINAL RELEASE FOR PRODUCTION	9-18-79	EB

MARK TMC P/NO.  
1/8 HIGH GOTHIC  
W/LATES REV. LETTER



HOLE  
A - .161 - .164 DIA 2REQ

REQ'D	ITEM	PART NUMBER	DESCRIPTION	SYM.
2	1	NT129-0440-4	NUT, ROUND SWAGE	A

QTY / UNIT	1	MODEL USED ON	AMC 16	ASS'Y NO.	AX5249
APPLICATION					
CODE					

**NOTICE TO PERSONS RECEIVING THIS DRAWING**  
THE TECHNICAL MATERIEL CORPORATION claims proprietary right in the material disclosed hereon. This drawing is issued in confidence for engineering information only and may not be reproduced or used to manufacture anything shown hereon without permission from THE TECHNICAL MATERIEL CORPORATION to the user. This drawing is loaned for mutual assistance and is subject to recall at any time.

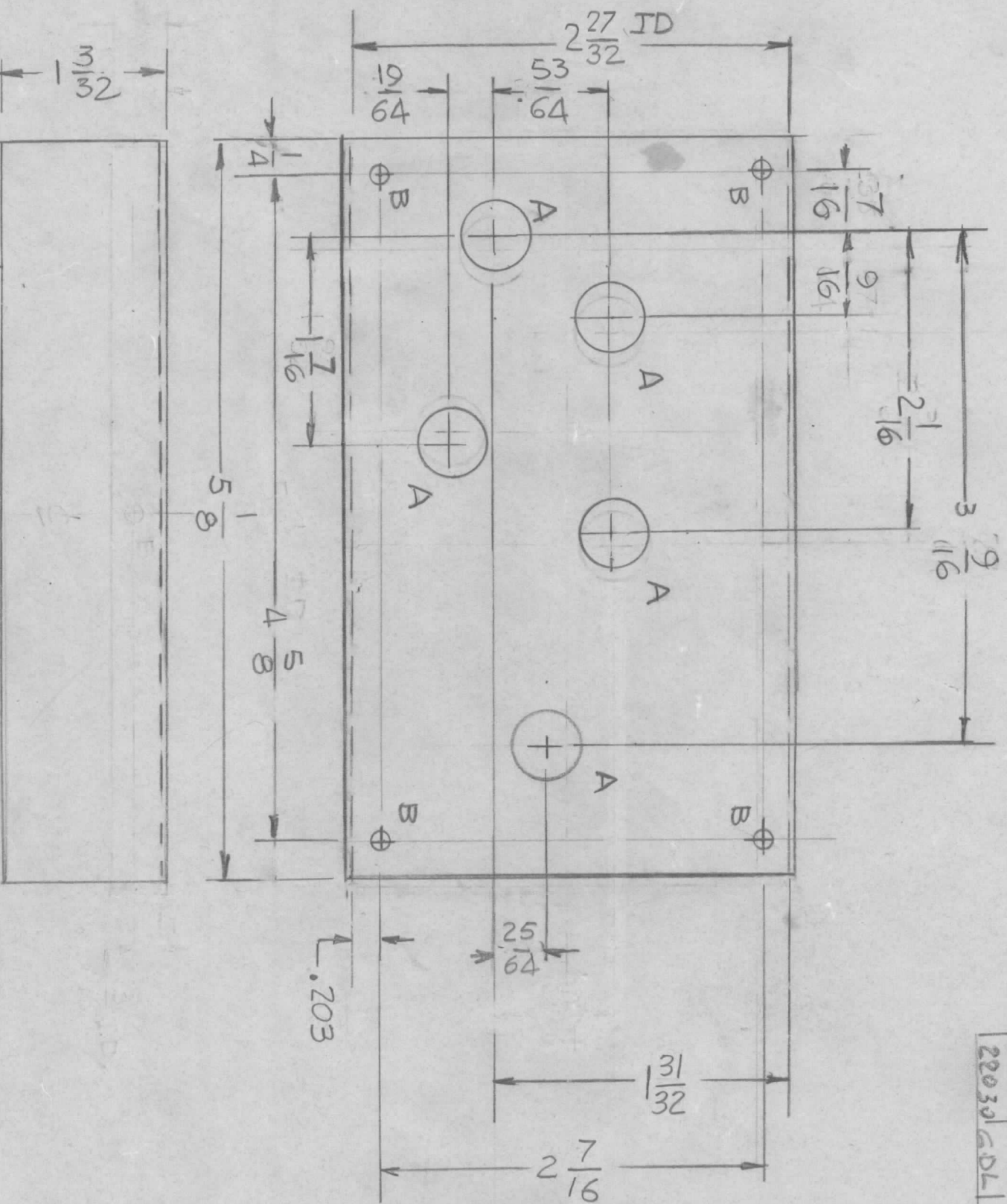
UNLESS OTHERWISE SPECIFIED DIMENSIONS ARE IN INCHES AND INCLUDE CHEMICALLY APPLIED OR PLATED FINISHES	FINAL APPROVAL	DATE
MECH. DES.	<i>GB</i>	DATE
ELECT. DES.		DATE
CHECKED		DATE
DRAWN	GDL	DATE 8-27-79

LIST OF MATERIAL			
THE TECHNICAL MATERIEL CORP.			
MAMARONECK, NEW YORK			
SIZE	CODE IDENT. NO.	DWG NO.	
B	82679	MS 6963	
SCALE	1:1	SHEET	0

BZA RE, SHIELD



REVISIONS				DATE	APPROVED
EMN NO.	DRAFT	CHKD	ZONE	LTR	DESCRIPTION
21788	WU	WU	A	Ø	ORIGINAL RELEASE FOR PRODUCTION
220301	GDL		B		3/16 to 2 1/2 3/32, 1/3/64 to 1/3/32, 2 5/8 to 2 7/8 DIM. 1/3/32 WAS 1/5/32
					1-28-80
					FB
					5-15-80



REF: LD 3116

HOLE  
A - 1/2 DIA 5 REQ'D  
B - 5/32 2 REQ'D

QTY / UNIT	MODEL USED ON	ASS'Y NO.
1	AMC 8 502	FX 10034
1	AMC B-752	FX 10018-1
1	AMC-8A	FX 10034

UNLESS OTHERWISE SPECIFIED DIMENSIONS ARE IN INCHES AND INCLUDE CHEMICALLY APPLIED OR PLATED FINISHES

DECIMALS .X ± .05  
.XX ± .01  
.XXX ± .005

FRACTIONS 1/64  
TOLS. ANGLES 0° .30'

MATERIAL .051 THK  
AL ALLOY 5052-H32

FINISH S404  
YEL IRIDITE

REQ'D	ITEM	PART NUMBER	DESCRIPTION	SYM.
			LIST OF MATERIAL	

THE TECHNICAL MATERIEL CORP.  
MAMARONECK, NEW YORK

COVER, FILTER HOUSING

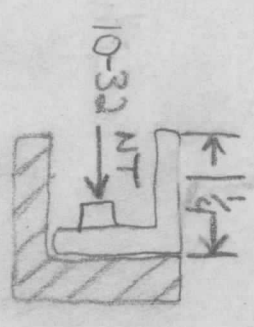
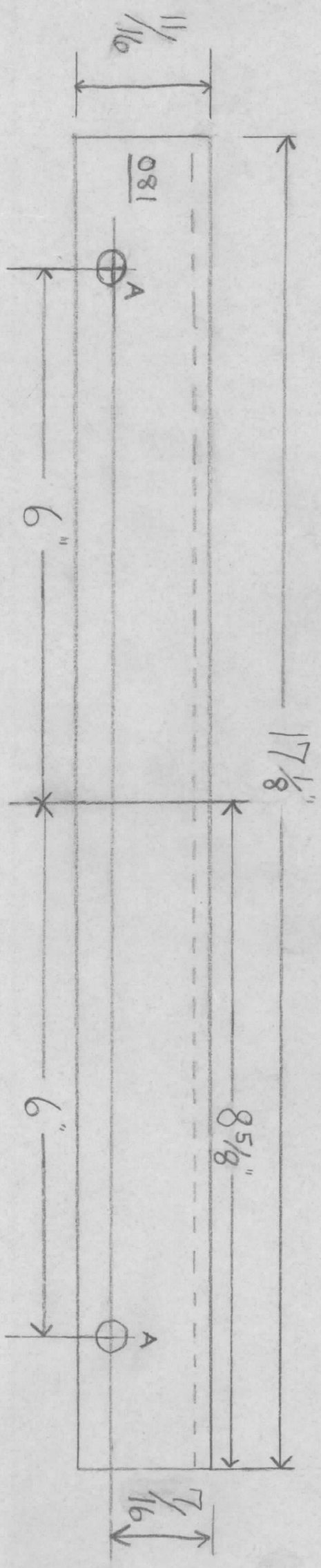
SIZE B CODE IDENT. NO. 82679 DWG NO. MS. 6977 ISSUE B.

SCALE 1:1 SHEET OF

NOTICE TO PERSONS RECEIVING THIS DRAWING  
THE TECHNICAL MATERIEL CORPORATION claims proprietary right in the material disclosed hereon. This drawing is issued in confidence for engineering information only and may not be reproduced or used to manufacture anything shown hereon without permission from THE TECHNICAL MATERIEL CORPORATION to the user. This drawing is loaned for mutual assistance and is subject to recall at any time.



EMN NO.		DRAFT	CHKD	ZONE	LTR	DESCRIPTION	DATE	APPROVED
A HOLE				13/64		(.203) DIA		
Material				081				



REQ'D	ITEM	PART NUMBER	DESCRIPTION	SYM.
			LIST OF MATERIAL	

UNLESS OTHERWISE SPECIFIED DIMENSIONS ARE IN INCHES AND INCLUDE CHEMICALLY APPLIED OR PLATED FINISHES		FINAL APPROVAL		DATE	
DECIMALS	TOLS.	MECH. DES.	DATE	ELECT. DES.	DATE
.X ± .05		CHECKED	DATE	DRAWN	DATE
.XX ± .01					
.XXX ± .005					
FRACTIONS		DATE		DATE	
1/64		DATE		DATE	
ANGLES		DATE		DATE	
0° - 30'		DATE		DATE	
MATERIAL		DATE		DATE	
FINISH		DATE		DATE	

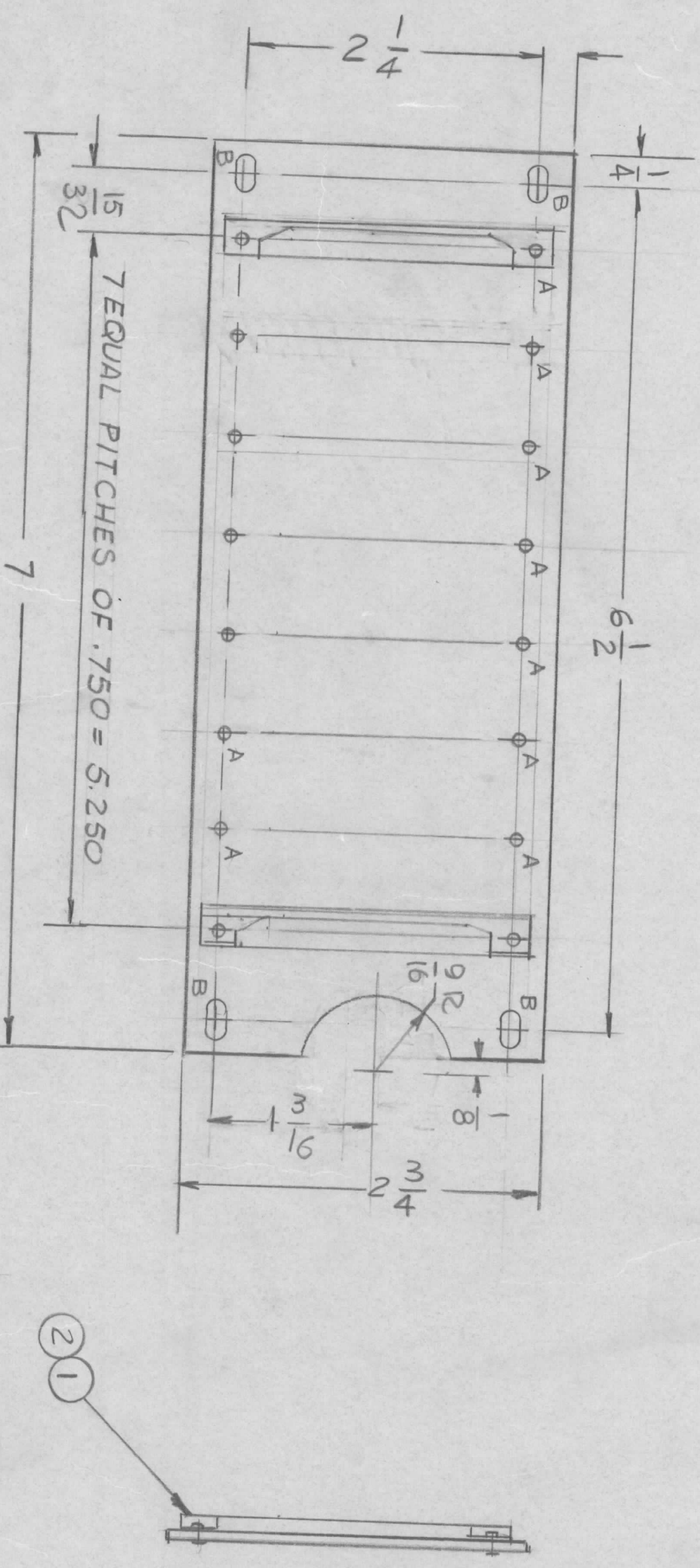
QTY / UNIT	MODEL USED ON	ASS'Y NO.
1	GPT 750/E5	
APPLICATION		
CODE		

NOTICE TO PERSONS RECEIVING THIS DRAWING  
 THE TECHNICAL MATERIEL CORPORATION claims proprietary right in the material disclosed hereon. This drawing is issued in confidence for engineering information only and may not be reproduced or used to manufacture anything shown hereon without permission from THE TECHNICAL MATERIEL CORPORATION to the user. This drawing is loaned for mutual assistance and is subject to recall at any time.

THE TECHNICAL MATERIEL CORP.	SIZE	CODE IDENT. NO.	DWG NO.	ISSUE
MAMARONECK, NEW YORK	B	82679	MS 6981	X
REAR BRACE, Bottom	SCALE			



EM/N. NO.	DRAFT	CHKD	ZONE	LTR	DESCRIPTION	DATE	APPROVED
	G.D.L				X1 9/16 R CUTOUT WAS 1/4 R	5-12-80	



HOLE:  
 A - .067 DIA 16REQ'D  
 B - 9/64 X 9/32 SLOT 4REQ'D

QTY / UNIT	1	MODEL USED ON	SME-5	ASS'Y NO.	
APPLICATION					
NOTICE TO PERSONS RECEIVING THIS DRAWING THE TECHNICAL MATERIEL CORPORATION claims proprietary right in the material disclosed hereon. This drawing is issued in confidence for engineering information only and may not be reproduced or used to manufacture anything shown hereon without permission from THE TECHNICAL MATERIEL CORPORATION to the user. This drawing is loaned for mutual assistance and is subject to recall at any time.					

UNLESS OTHERWISE SPECIFIED DIMENSIONS ARE IN INCHES AND INCLUDE CHEMICALLY APPLIED OR PLATED FINISHES	DECIMALS	FRACTIONS
X ± .05	1/64	
.XX ± .01	ANGLES	0° - 30'
.XXX ± .005		
MATERIAL	.063THK ALUM 5052-H32	
FINISH	S404 YEL. IRIDITE	

REQ'D	ITEM	PART NUMBER	DESCRIPTION	SYM.
16	2	EY100-	EYELET FLAT FLANGE	
8	1	CU157-3	RETAINER, PC BD	

FINAL APPROVAL	DATE	
MECH. DES.	DATE	
ELECT. DES.	DATE	
CHECKED	DATE	
DRAWN	DATE	2-13-80

LIST OF MATERIAL

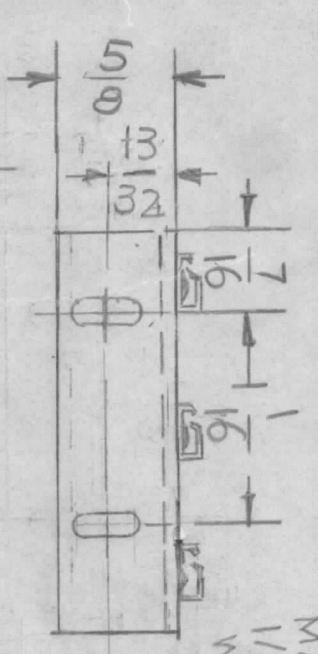
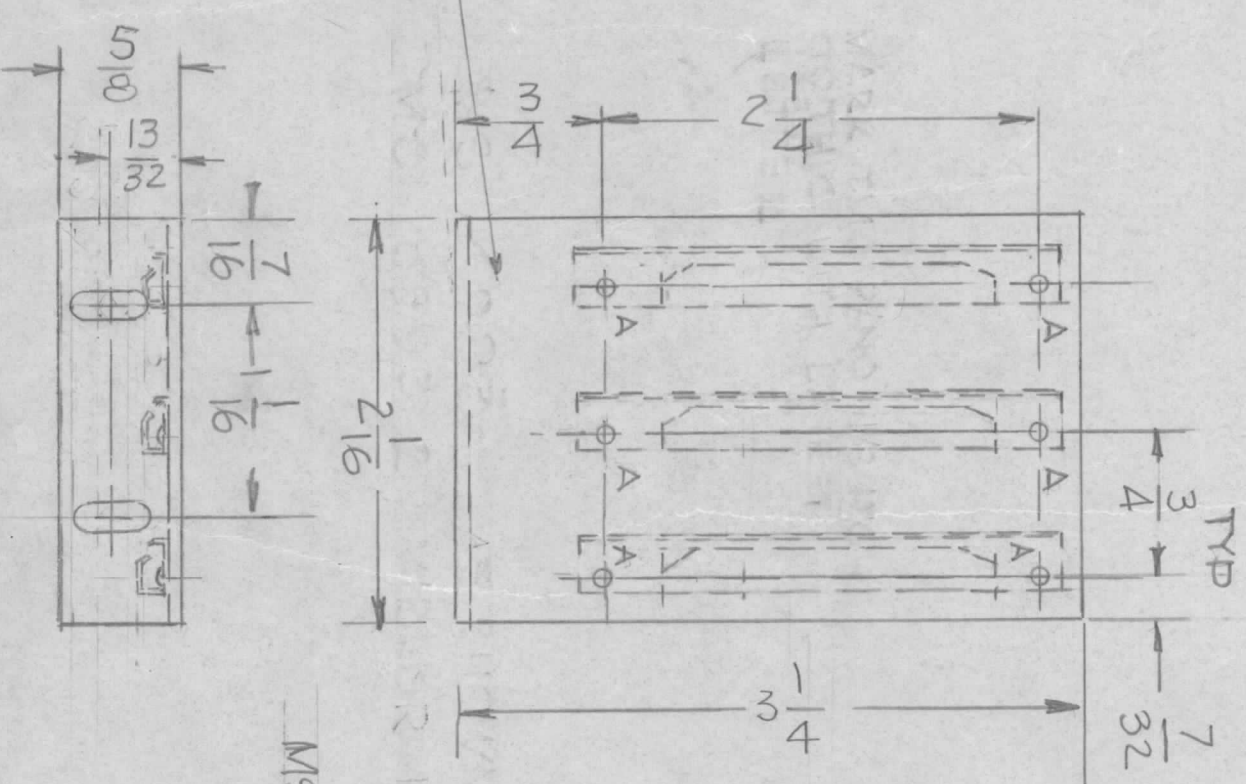
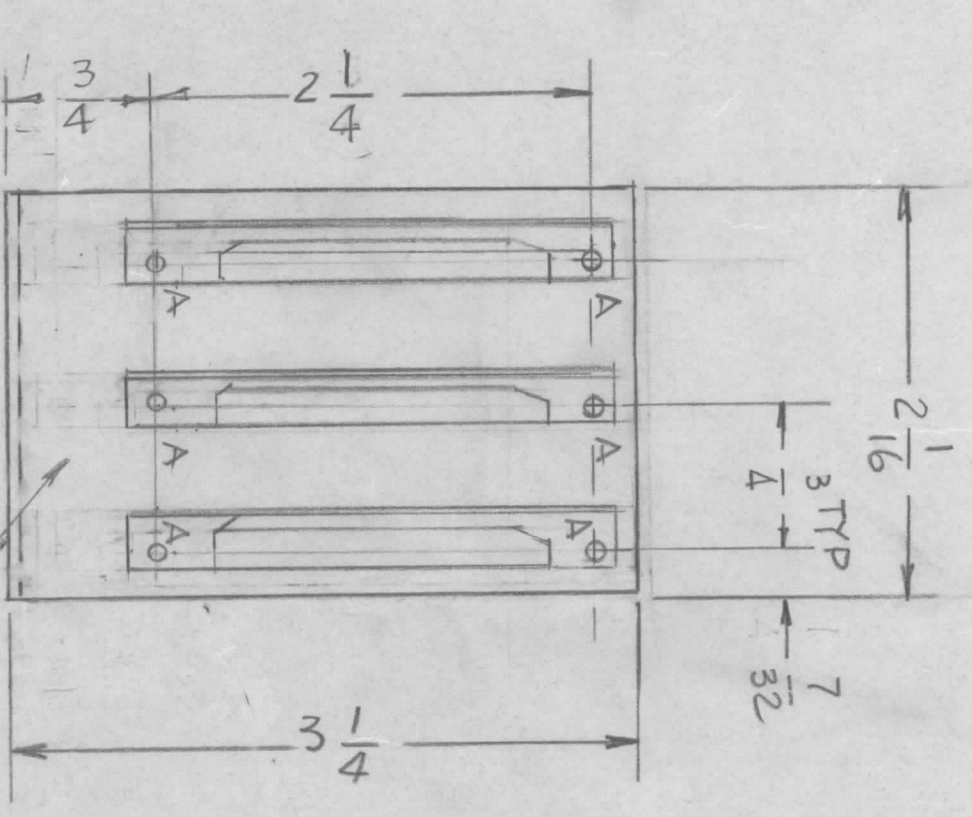
THE TECHNICAL MATERIEL CORP.  
 MAMARONECK, NEW YORK

GUIDE, CARD FILE

SIZE	CODE IDENT. NO.	DWG NO.	ISSUE
B	82679	MS6992	X1



REVISIONS				DATE	APPROVED
EMN. NO.	DRAFT	CHKD	ZONE	LTR	DESCRIPTION
	GDL			X1	DIM'S 2 1/4 & 3/4 WERE 2 3/4 & 1/4 ITEM 1 WAS CU1001S
	GDL			X2	REMOVE ALL RIGHTSIDE BEND
	GDL			X3	MS6993-2 PICT. ADD
					3-24-80
					4-19-81
					8-27-82



MARK TMC P/NO  
1/8 HIGH GOTHIC  
W/LATEST REV.  
LETTER

HOLE:  
A - .067 DIA 6 REQ'D  
B - 9/64 x 9/32 SLOT 2 REQ'D

MS6993-2

REQ'D	ITEM	PART NUMBER	DESCRIPTION	SYM.
6	2	EY100-5	EYELET, FLAT FLANGE	
3	1	CU157-3	RETAINER P.C. BD	

LIST OF MATERIAL  
THE TECHNICAL MATERIEL CORP.  
MAMARONECK, NEW YORK

BRACKET, CARD FILE

QTY / UNIT	MODEL USED ON	ASSY NO.
	SME-5	
	APPLICATION	
	CODE	

DECIMALS	FRACTIONS
.X ± .05	1/64
.XX ± .01	ANGLES
.XXX ± .005	0° - 30°
FINISH	
S404	
YEL. IRIDITE	

FINAL APPROVAL	DATE
MECH. DES.	DATE
ELECT. DES.	DATE
CHECKED	DATE
DRAWN	DATE

SIZE	CODE IDENT. NO.	DWG NO.	ISSUE
B	82679	MS6993-	X3
SCALE	1:1	SHEET	OF

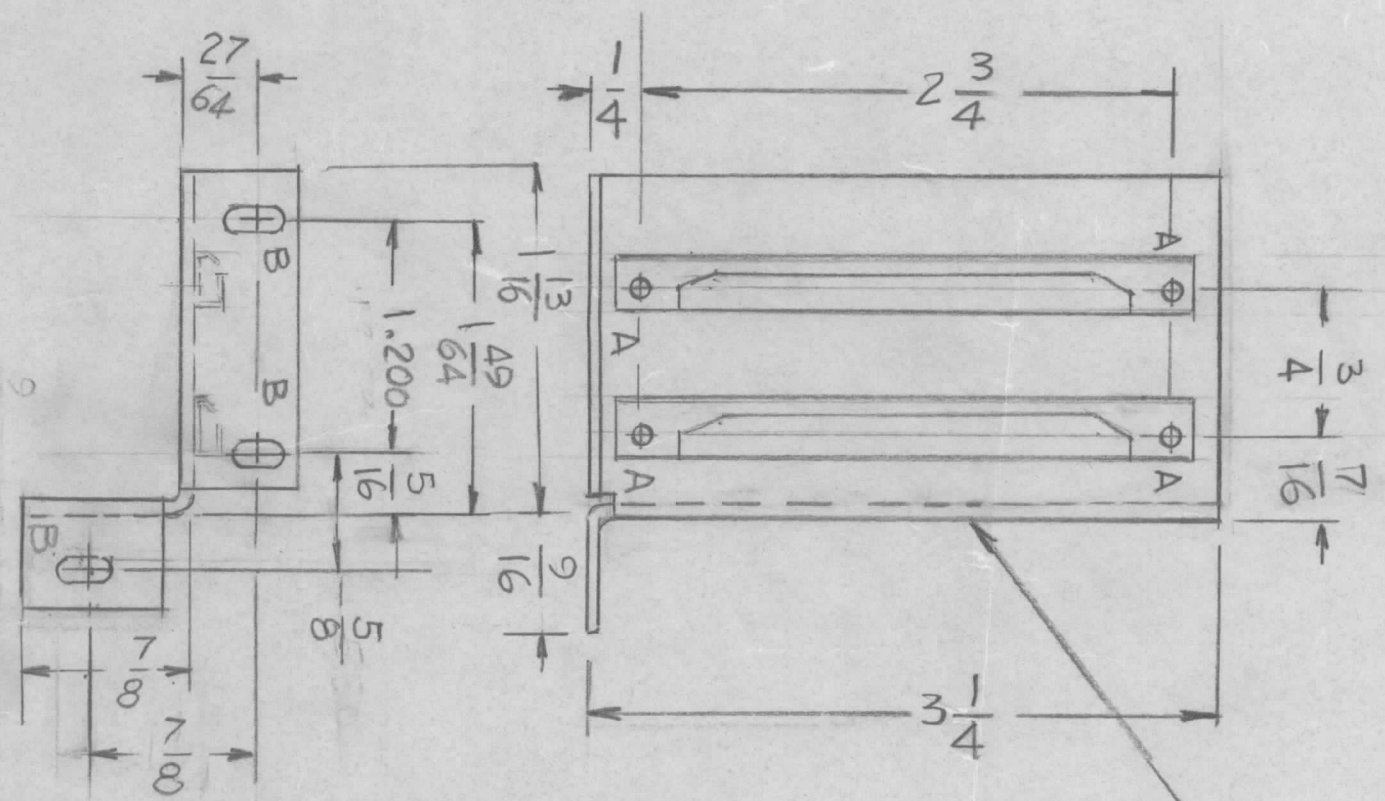
MS6993-1

NOTICE TO PERSONS RECEIVING THIS DRAWING  
THE TECHNICAL MATERIEL CORPORATION claims proprietary right in the material disclosed hereon. This drawing is issued in confidence for engineering information only and may not be reproduced or used to manufacture anything shown hereon without permission from THE TECHNICAL MATERIEL CORPORATION to the user. This drawing is loaned for mutual assistance and is subject to recall at any time.



REVISIONS		DESCRIPTION	DATE	APPROVED
EM.N. NO.	DRAFT	CHKD	ZONE	LTR

MARK TMC/P/NO  
1/8 HIGH GOTHIC WITH  
LATEST REV. LETTER



HOLE -  
A - .067 DIA 4 REQ'D  
B - 9/64 X 9/32 SLOT 3 REQ'D

MS 6994 - AS SHOWN  
MS 6994 - 22 (MIRROR IMAGE)

REQ'D	ITEM	PART NUMBER	DESCRIPTION	SYM.
4	2	EY 100-3	EYELET, FLAT FLANGE	
2	1	CU 10015-3	RETAINER PC BD	

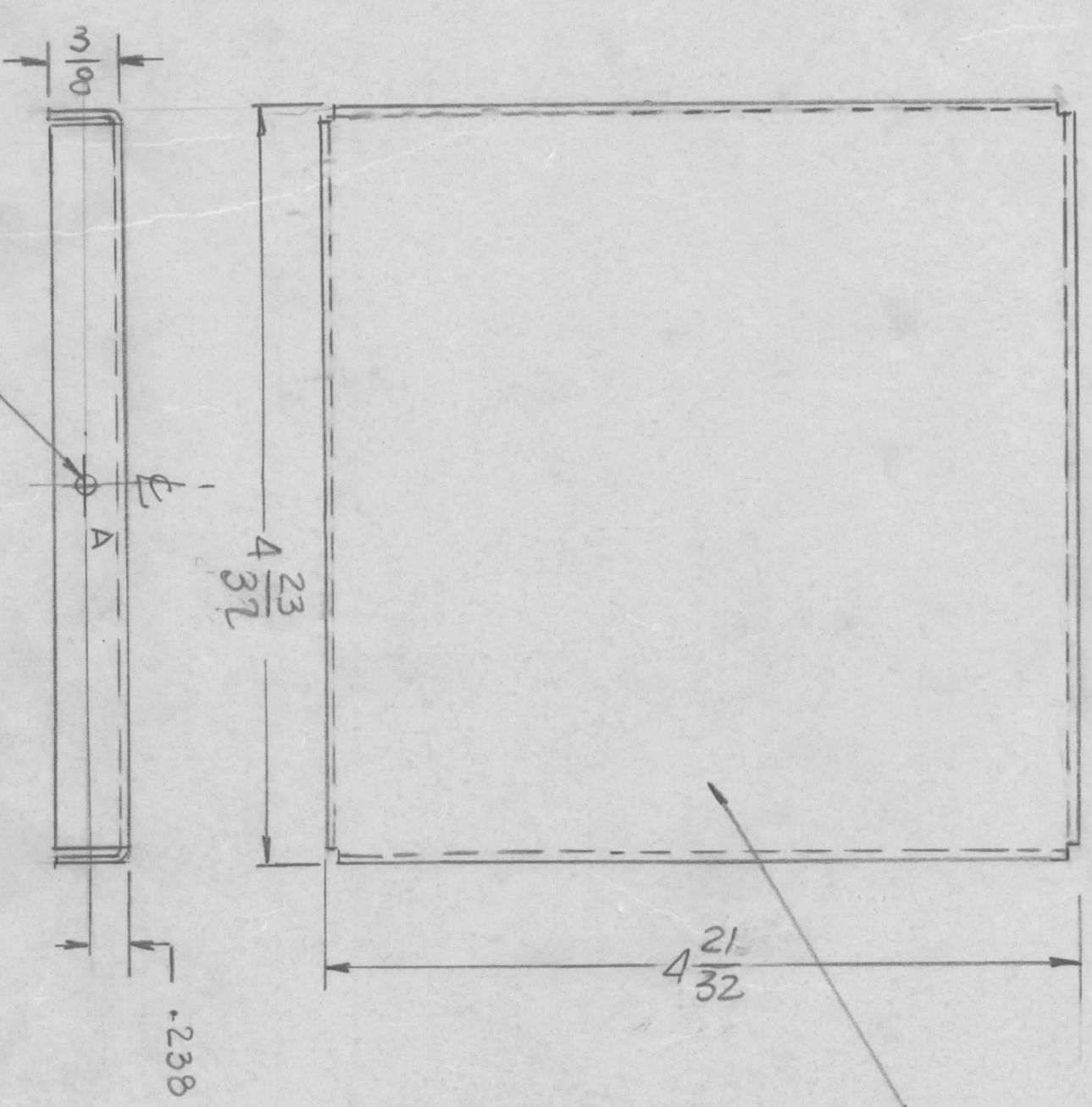
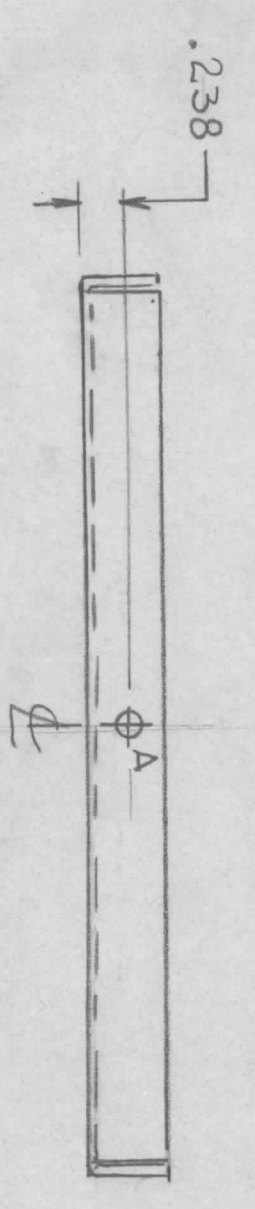
UNLESS OTHERWISE SPECIFIED DIMENSIONS ARE IN INCHES AND INCLUDE CHEMICALLY APPLIED OR PLATED FINISHES		FINAL APPROVAL	DATE
DECIMALS	FRACTIONS	MECH. DES.	DATE
.X ± .05	1/64	ELECT. DES.	DATE
.XX ± .01	ANGLES	CHECKED	DATE
.XXX ± .005	0° - 30'	DRAWN	DATE

LIST OF MATERIAL  
**THE TECHNICAL MATERIEL CORP.**  
MAMARONECK, NEW YORK  
**BRACKET, CARD FILE**  
(SME-5)

QTY / UNIT	MODEL USED ON APPLICATION	ASSY NO.	CODE
<p>NOTICE TO PERSONS RECEIVING THIS DRAWING THE TECHNICAL MATERIEL CORPORATION claims proprietary right in the material disclosed hereon. This drawing is issued in confidence for engineering information only and may not be reproduced or used to manufacture anything shown hereon without permission from THE TECHNICAL MATERIEL CORPORATION to the user. This drawing is loaned for mutual assistance and is subject to recall at any time.</p>			
FINISH	ALUM 5052- H32		
FINISH	5404		
	VEL. IRIDITE		



REVISIONS				DATE	APPROVED
EMN NO.	DRAFT	CHKD	ZONE	LTR	DESCRIPTION
				X1	DIM 4 23/32 ← 4 2/32 REVERSED
					4-22-80



5/32 DIA  
2 REQ'D

MARK TMC P/NO 1/8 HIGH  
GOTHIC WITH LATEST REV.  
LETTER

QTY / UNIT	1	MODEL USED ON	SME	ASS'Y NO.	
APPLICATION					
CODE					

DECIMALS	.X ± .05	FRACTIONS	1/64
	.XX ± .01	TOLS.	ANGLES
	.XXX ± .005		° .30'
MATERIAL		.051 THK	
FINISH		ALUM 5052-H32	
YEL. IRIDITE		S404	

REQ'D	ITEM	PART NUMBER	DATE

FINAL APPROVAL	MECH. DES.	DATE	
ELECT. DES.	CHECKED	DATE	
DRAWN	G.D.L.	DATE	

LIST OF MATERIAL

THE TECHNICAL MATERIEL CORP.  
MAMARONECK, NEW YORK

SIZE	CODE IDENT. NO.	DWG NO.	ISSUE
B	82679	MSC0997	X1
SCALE	1:1	SHEET	OF

NOTICE TO PERSONS RECEIVING THIS DRAWING  
THE TECHNICAL MATERIEL CORPORATION claims proprietary right in the material disclosed hereon. This drawing is issued in confidence for engineering information only and may not be reproduced or used to manufacture anything shown hereon without permission from THE TECHNICAL MATERIEL CORPORATION to the user. This drawing is loaned for mutual assistance and is subject to recall at any time.