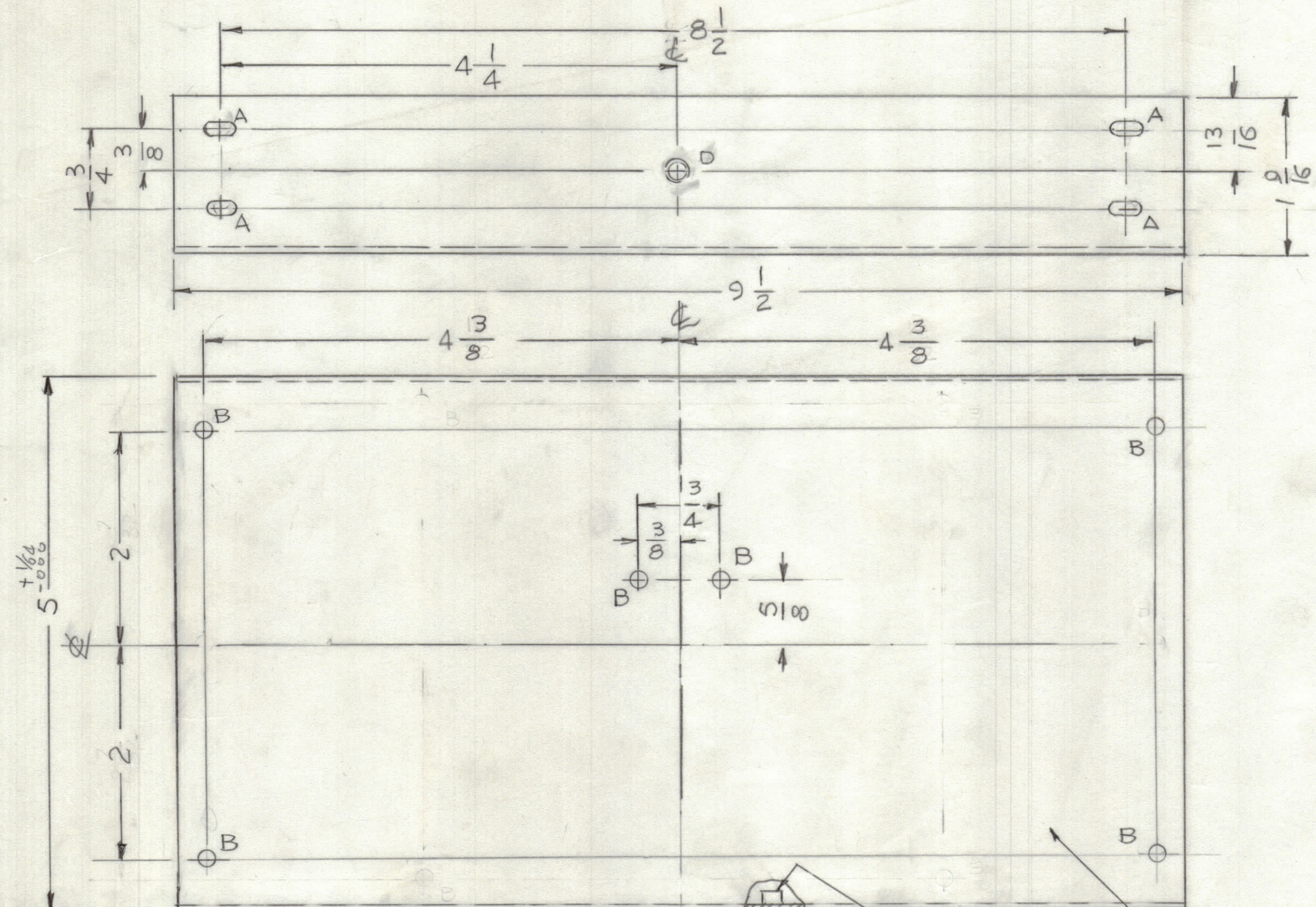
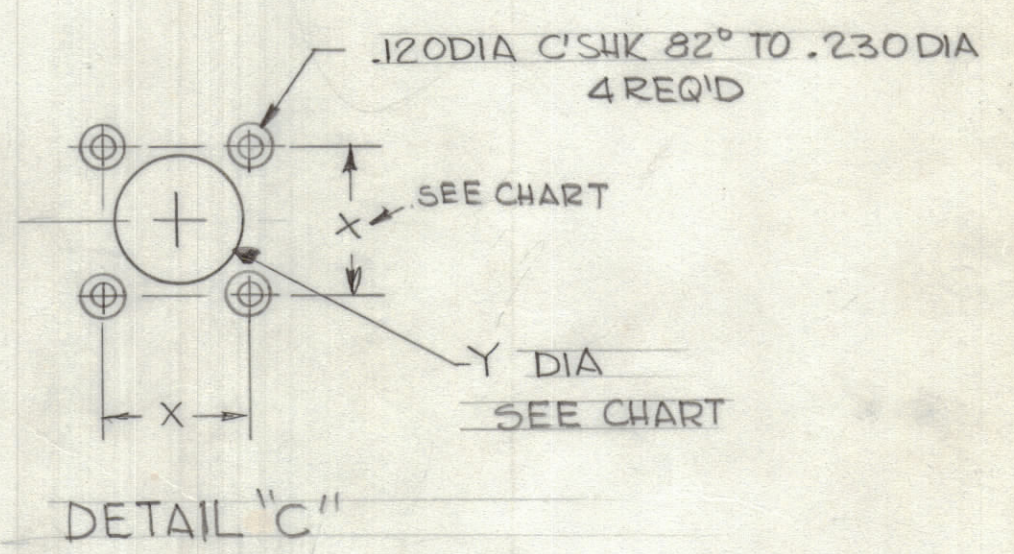
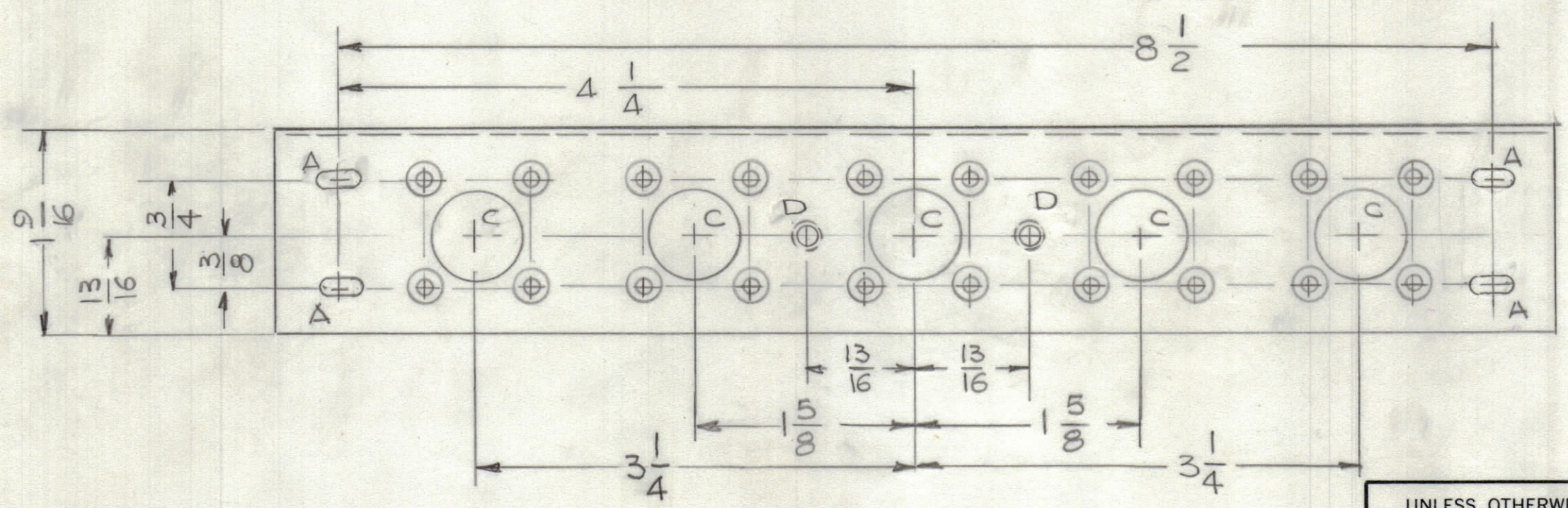


REVISIONS						
ZONE	LTR	DESCRIPTION	DATE	E.M.N.NO	DRAFT	APPD
	Ø	ORIGINAL RELEASE FOR PRODUCTION	2-11-80			F.B.



HOLE:  
 A-11/64 x 11/32 SLOT 8 REQ'D  
 B- 3/16 DIA 4 REQ'D  
 D- .191-.194 DIA 3 REQ'D

PART NO.	DIM. X	DIM. Y
MS 6984	0.718	11/16
MS6984-2	0.500	7/16



MARK TMC P/NO  
 1/8 HIGH GOTHIC  
 W/LATEST REV.  
 LETTER.

- UNLESS OTHERWISE SPECIFIED:
- USE MATERIAL THICKNESS FOR MAXIMUM RADIUS ON ALL BENDS.
  - ALL ANGULAR BENDS 90 DEGREES.
  - REMOVE ALL BURRS AND SHARP EDGES.
  - MOUNT INSERTS AFTER FINISHING.

QTY / UNIT	MODEL USED ON	ASS'Y NO.
1	HFD-1-2	
1	LFD-1-2	
APPLICATION		
	CODE	

NOTICE TO PERSONS RECEIVING THIS DRAWING  
 THE TECHNICAL MATERIEL CORPORATION claims proprietary right in the material disclosed hereon. This drawing is issued in confidence for engineering information only and may not be reproduced or used to manufacture anything shown hereon without permission from THE TECHNICAL MATERIEL CORPORATION to the user. This drawing is loaned for mutual assistance and is subject to recall at any time.

UNLESS OTHERWISE SPECIFIED  
 DIMENSIONS ARE IN INCHES  
 AND INCLUDE CHEMICALLY APPLIED  
 OR PLATED FINISHES

TOLERANCES ON

DECIMALS	FRACTIONS
.X ± .05	± 1/64
.XX ± .01	ANGLES
.XXX ± .005	± 0°-30'

MATERIAL .063THK ALUM  
 ALY 5052-H32

FINISH 3404  
 YEL. IRIDITE

QTY. REQ.	ITEM	PART NO.	DESCRIPTION	SYMBOL
3	1	NT129-0632-4	NUT, ROUND	D
LIST OF MATERIAL				
FINAL APPROVAL		DATE	<b>THE TECHNICAL MATERIEL CORP.</b> MAMARONECK, NEW YORK  CHASSIS ASS'Y	
MECH. DES.		DATE		
ELECT. DES.		DATE		
CHECKED		DATE		
DRAWN		DATE		
G.D.L.		1-4-80		
SIZE	CODE IDENT. NO.	DWG NO.	ISSUE	
C	82679	MS 6984	Ø	
SCALE			SHEET	OF
1:1				

MS 6984