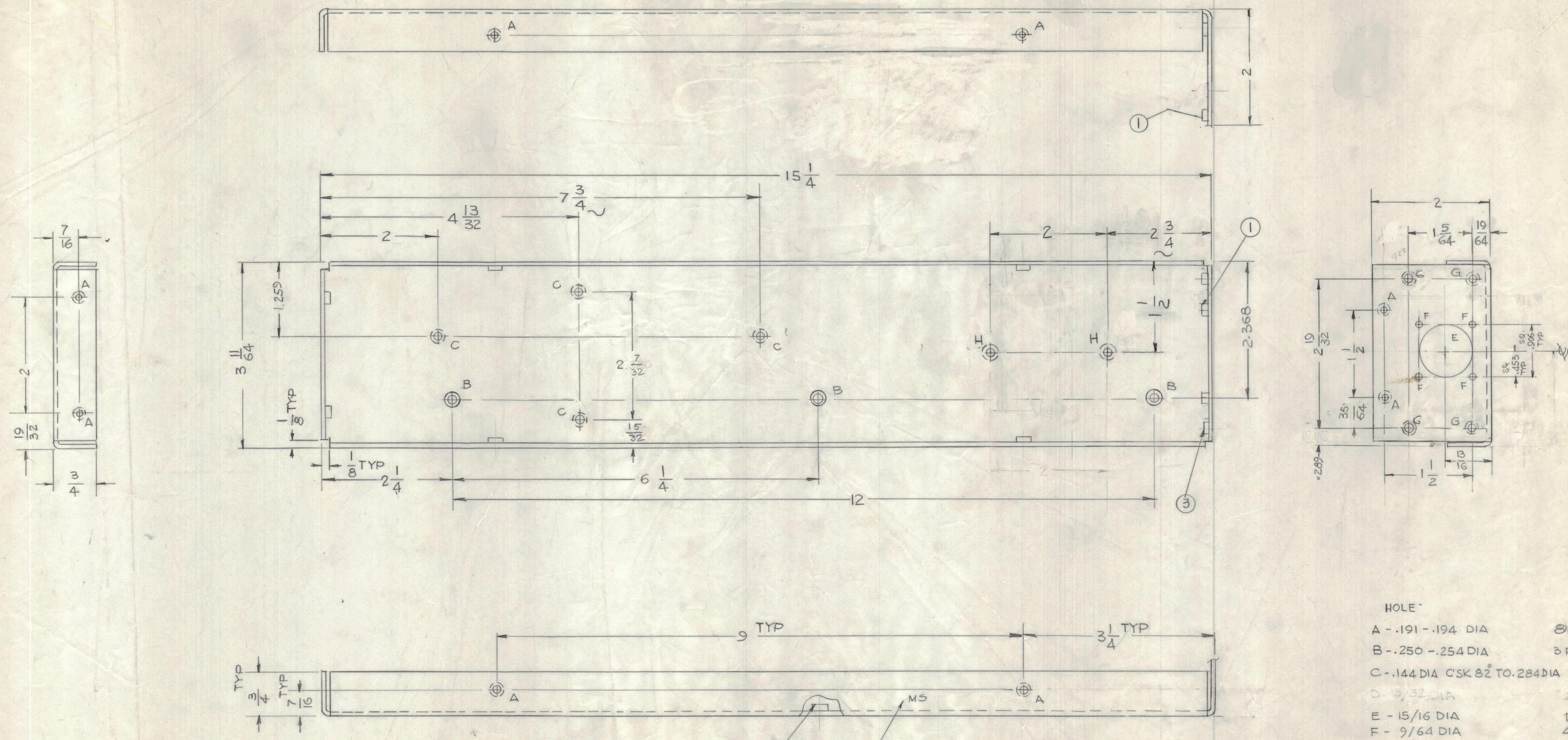


REVISIONS						
E.M.N.O.	DRAFT	CHKD	ZONE	LTR	DESCRIPTION	DATE
	GDL			X1	REDRAWN & UPDATED	
				Ø	ORIGINAL RELEASE FOR PRODUCTION	2-25-93
21784	GDL		A		DIM- 1/2 ADD - DIM .475 WAS .472	4-3-85
21838	GDL		B		ADD TWO "H" HOLE DEL. TWO "C" HOLE	9-17-80
	GDL		C		TWO "G" HOLES & 2 ITEM 3 ADD.	1-4-85
22098	GDL		D		ØN HOLE NOTE & CHART NEAR HOLE & ITEM 1 QTY.	4-3-85
	GDL		E		DIMENSION 2 7/8 WAS 2.220 & 15/32 WAS 4.50 NOTE REPLACE ADD	3-25-93



HOLE

A - .191 - .194 DIA	8 REQ'D
B - .250 - .254 DIA	3 REQ'D
C - .144 DIA C'SK 82° TO .284 DIA	3 REQ'D
D - 9/32 DIA	2 REQ'D
E - 15/16 DIA	1 REQ'D
F - 9/64 DIA	4 REQ'D
G - 161-164 DIA	4 REQ'D
H - .120 DIA C'SK 82° TO .230 DIA	2 REQ'D

UNLESS OTHERWISE SPECIFIED:

- USE MATERIAL THICKNESS FOR MAXIMUM RADIUS ON ALL BENDS.
- ALL ANGULAR BENDS 90 DEGREES.
- REMOVE ALL BURRS AND SHARP EDGES.
- MOUNT INSERTS AFTER FINISHING.

REPLACE BY
MS7263
3-25-93

REF: LD3119

QTY / UNIT	MODEL USED ON	ASS'Y NO.
1	AMC-32A	
APPLICATION		
CODE		
MATERIAL .063 THK AL ALY 5052-H32		
FINISH S404 YEL IRIDIOTE		

QTY. REQ.	ITEM	PART NO.	DESCRIPTION	SYMBOL
4	3	NT129-0440-4	NUT, ROUND	A
3	2	NT129-1032-4	NUT, ROUND	B
1	1	NT129-0632-4	NUT, ROUND	A

LIST OF MATERIAL			
THE TECHNICAL MATERIEL CORP. MAMARONECK, NEW YORK			
PLATE, RIGHT SIDE CHASSIS			
SIZE	CODE IDENT NO.	DWG NO.	ISSUE
D	82679	MS 6971	E
SCALE 1:1		SHEET OF	

NOTICE TO PERSONS RECEIVING THIS DRAWING
THE TECHNICAL MATERIEL CORPORATION claims proprietary right in the material disclosed hereon. This drawing is issued in confidence for engineering information only and may not be reproduced or used to manufacture anything shown hereon without permission from THE TECHNICAL MATERIEL CORPORATION to the user. This drawing is loaned for mutual assistance and is subject to recall at any time.