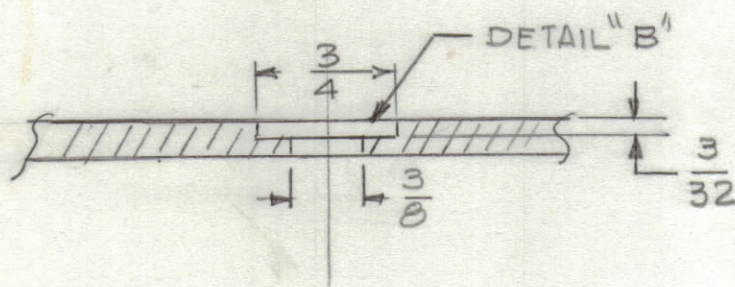
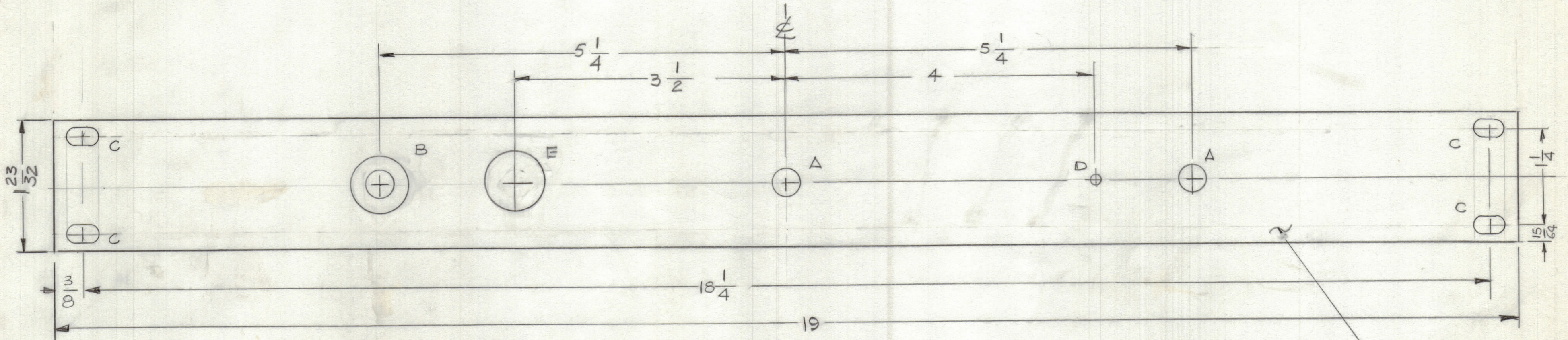
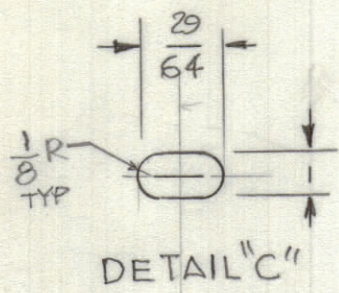


REVISIONS						
ZONE	LTR	DESCRIPTION	DATE	E.M.N.NO	DRAFT	CHKD APPD

HOLE	DESCRIPTION	REQ'D
A	3/8 DIA	2
B	SEE DETAIL	1
C	SEE DETAIL	4
D	9/64 DIA	1
E	27/32	1



MARK TMC P/NO 1/8 HIGH GOTHIC ON REAR OF PANEL W/LATES REVISION LETTER

UNLESS OTHERWISE SPECIFIED:

MACHINING NOTES:

- 1. MILL ALL EDGES
- 2. PANEL MUST BE FREE OF ALL MACHINING MARK GOUGES & SCRATCHES. IF NECESSARY SAND FRONT OF PANEL WITH NO. GRIT SAND PAPER

*** FINISH NOTES:**

- S404 YELLOW IRIDITE
- S114 ZINC CHROMATE PRIMER
- OR PRIME & PAINT TO CUSTOMER SPEC

]- FRONT & EDGES ONLY

QTY / UNIT	MODEL USED ON	ASS'Y NO.
1	GPT-750/E5	
APPLICATION		
	CODE	

NOTICE TO PERSONS RECEIVING THIS DRAWING
 THE TECHNICAL MATERIEL CORPORATION claims proprietary right in the material disclosed hereon. This drawing is issued in confidence for engineering information only and may not be reproduced or used to manufacture anything shown hereon without permission from THE TECHNICAL MATERIEL CORPORATION to the user. This drawing is loaned for mutual assistance and is subject to recall at any time.

REF: LD 3112
 UNLESS OTHERWISE SPECIFIED DIMENSIONS ARE IN INCHES AND INCLUDE CHEMICALLY APPLIED OR PLATED FINISHES

TOLERANCES ON
 DECIMALS: .X ± .05, .XX ± .01, .XXX ± .005
 FRACTIONS: ± 1/64, ANGLES: ± 0° -30'

MATERIAL 3/16 THK ALUM 5052-H32
 FINISH AS NOTED

QTY. REQ.	ITEM	PART NO.	DESCRIPTION	SYMBOL
LIST OF MATERIAL				
THE TECHNICAL MATERIEL CORP. MAMARONECK, NEW YORK				
FRONT PANEL (AUDIO)				
FINAL APPROVAL		DATE		
MECH. DES.		DATE		
ELECT. DES.		DATE		
CHECKED		DATE		
DRAWN		DATE		
G.D.L		5-13-79		
SIZE	CODE IDENT. NO.	DWG NO.	ISSUE	
C	82679	MS 6954	X	
SCALE 1:1			SHEET	OF